



## FILM/TV PROJECTS

- DUNE: SISTERHOOD*
  - BLACK ADAM*
  - FALCON & WINTER SOLDIER*
  - VOYAGERS*
  - WATCHMEN* (Pilot)
  - AVENGERS: END GAME*
  - AVENGERS: INFINITY WAR*
  - GUARD. OF THE GALAXY: VOL 2*
  - AMER. HORROR STORY: HOTEL*
  - TRANSFORMERS 4*
  - STAR TREK: INTO DARKNESS*
- \*Add'l credits on IMDB.com*

## EDUCATION

- MFA - Production Design**  
AFI Conservatory 2011
- Bachelors - Marketing**  
Santa Clara University 1996

## SKILLS

- 3D Modeling
- Concept Renderings
- CAD & Hand Drafting
- Illustrations
- CNC Fabrication
- 3D Printing
- On-site Installation
- Photoshop Retouching
- Color Corrections
- Layout & Typography
- Final Mechanicals

## SOFTWARE

- Rhino, TwinMotion
- Photoshop, InDesign
- Illustrator, Adobe Bridge
- Premiere Pro, After Effects
- Word, Excel, PowerPoint
- Keynote, Slack, Zoom

## PORTFOLIO



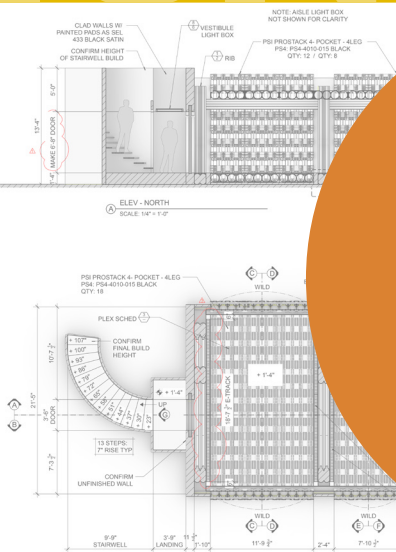
# ART DIRECTION

### SUPERVISING ART DIRECTOR 2019 - CURRENT

Supervise Art Directors, Assistant Art Directors, Set Designers, & Graphic Designers. Responsible for budgeting and scheduling all departmental labor upwards of \$5 million. Partner with Construction Coordinator to develop Set Construction Budgets upwards of \$20 million.

### ART DIRECTOR 2010 - CURRENT

Execute Set Environments from concept through shooting. Develop 3D models, Plan & Elevation drawings, Schematics & Renderings for presentations. Manage team of Assistant Art Directors, Set Designers and Graphic Designers. Manage Construction Drawings, 3D & 2D files. Oversee the set builds.



### SET DESIGNER 2019 - CURRENT

Work with Art Director to develop 3D models and renderings for creative presentations. Develop all CAD Drafting for Construction: Plans, Elevations, Details and Schematics. Prepare 3D & CNC files for printing & fabrication.

# SET DESIGN

# GRAPHIC DESIGN

### CREATIVE DIRECTOR VICTORIA'S SECRET 2005 - 2009

Supervise teams of Graphic Designers to design Visual Merchandising graphics: window displays, in-store marketing and P.O.S. signage. Partner with Store Design to design new, brand environments including 3D models & architectural graphics. Oversee on-site installations.

### GRAPHICS MANAGER THE BODY SHOP 2001 - 2005

Develop all in-store Marketing, Signage and training materials for North & South America regions.

