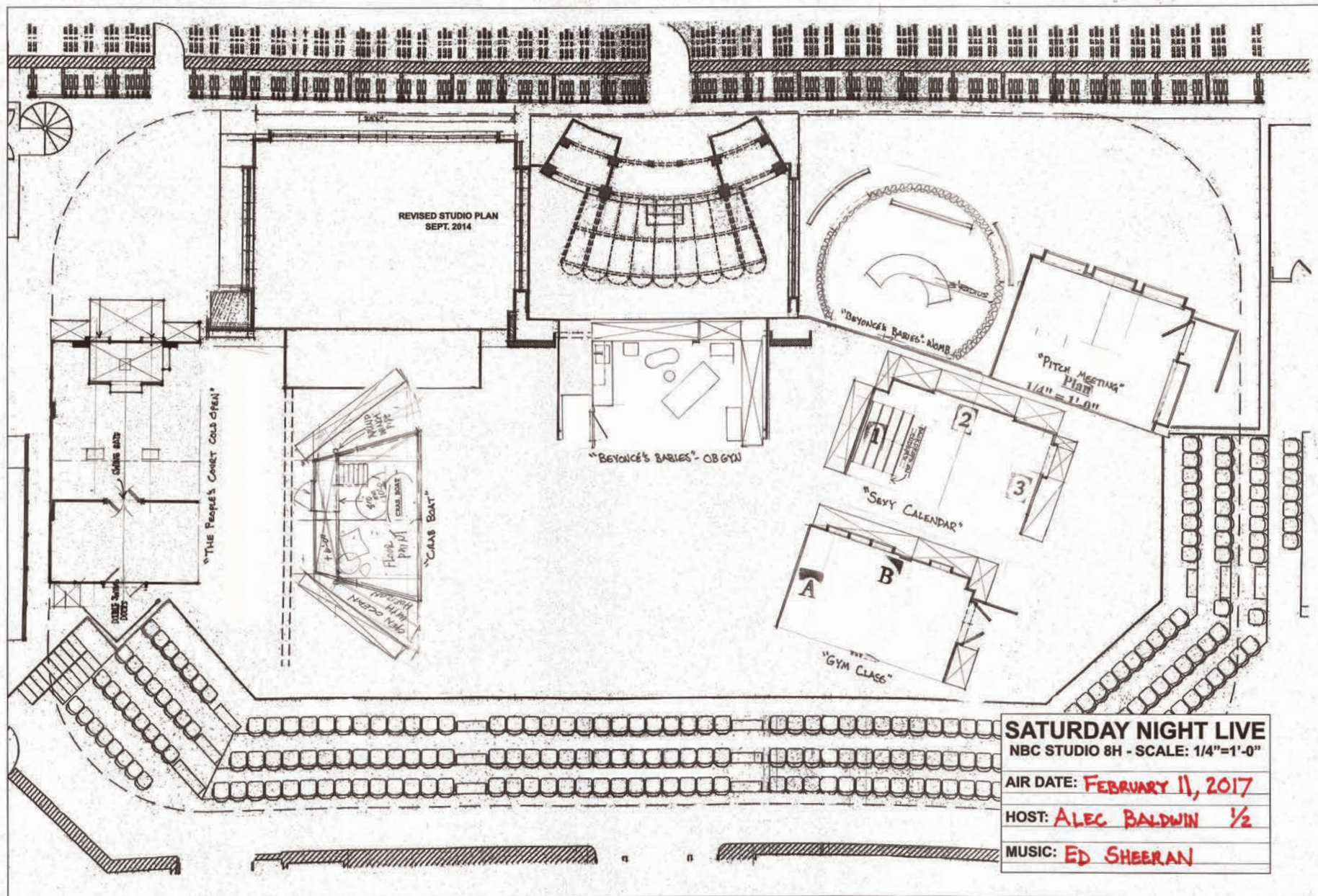


**SATURDAY  
NIGHT  
LIVE**





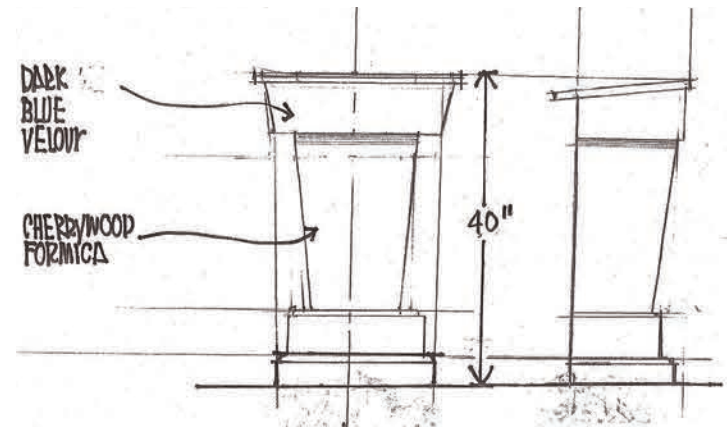


**SATURDAY NIGHT LIVE**  
 NBC STUDIO 8H - SCALE: 1/4"=1'-0"

AIR DATE: **FEBRUARY 11, 2017**

HOST: **ALEC BALDWIN 1/2**

MUSIC: **ED SHEERAN**



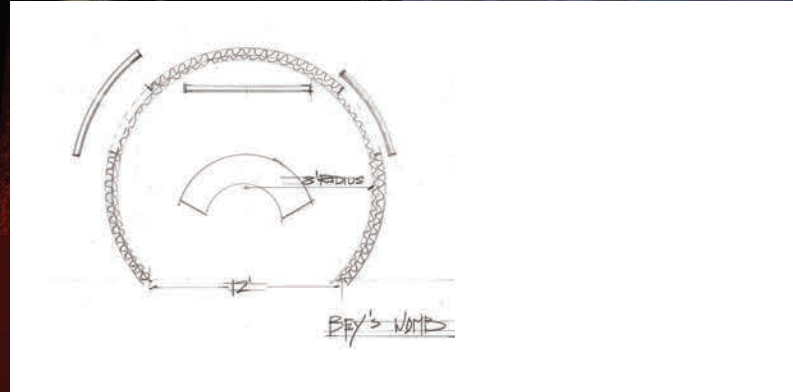


WOMEN'S BASKETBALL  
STATE CHAMPIONS

1996 19  
2008 2005







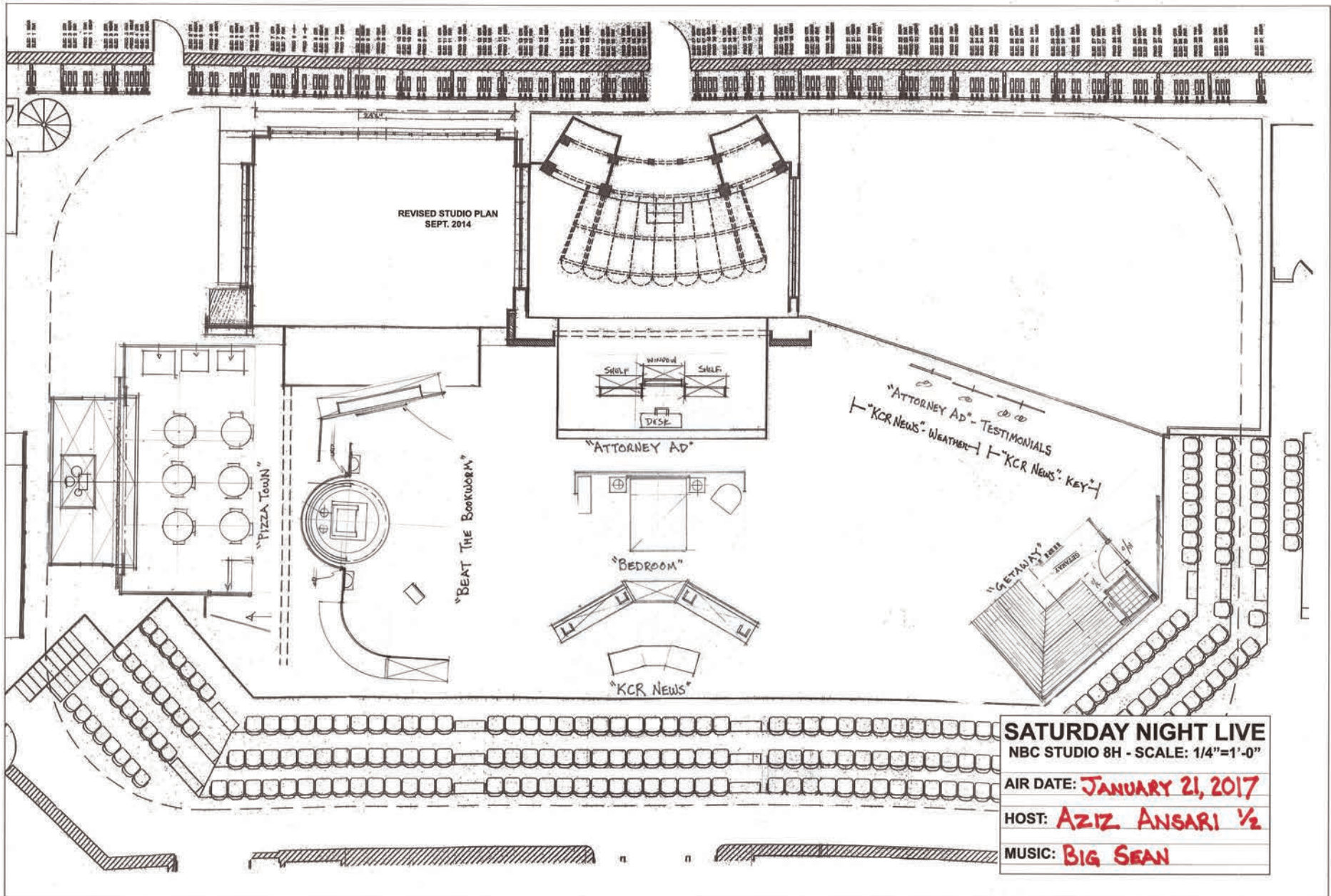




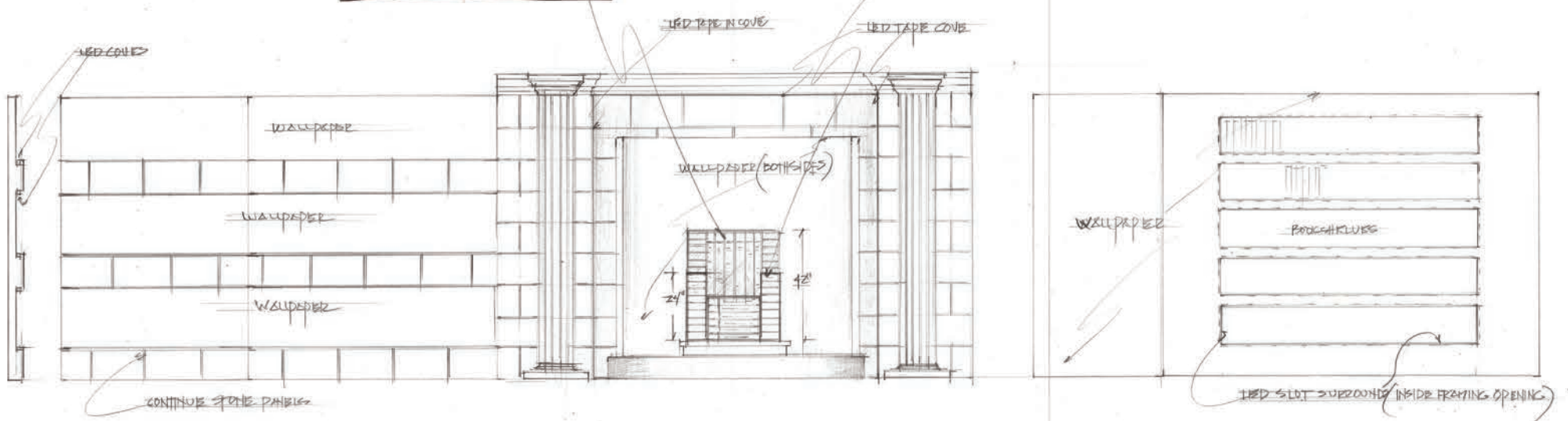






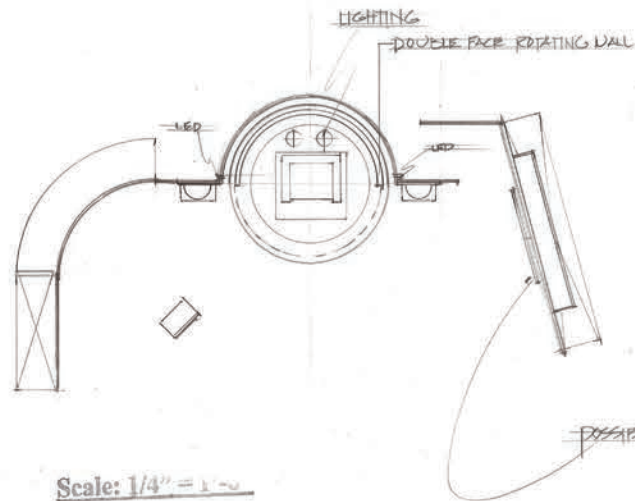






Scale: 1/2" = 1'-0"

Scale: 1/2" = 1'-0"

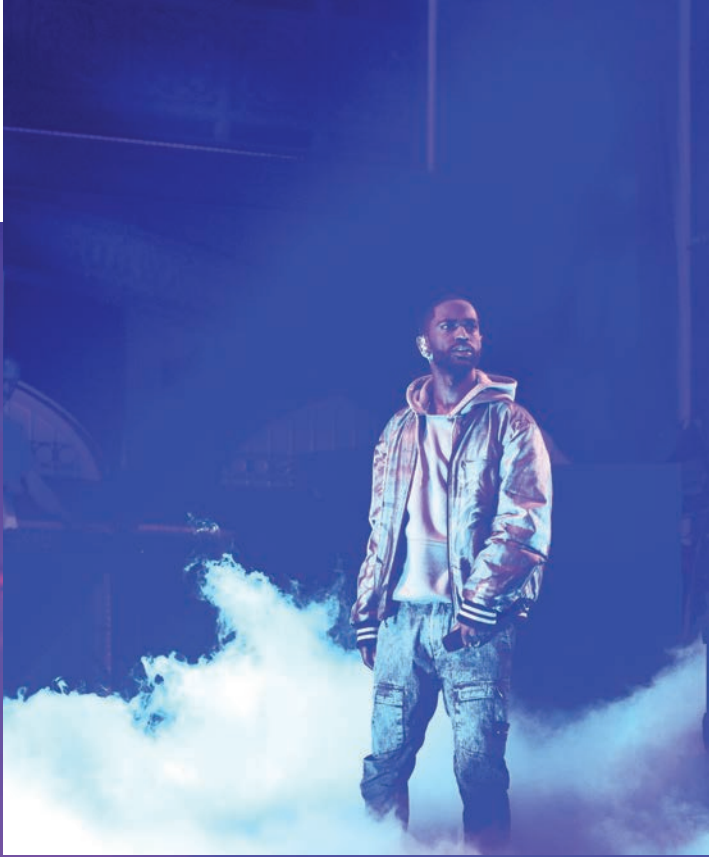


Scale: 1/4" = 1'-0"

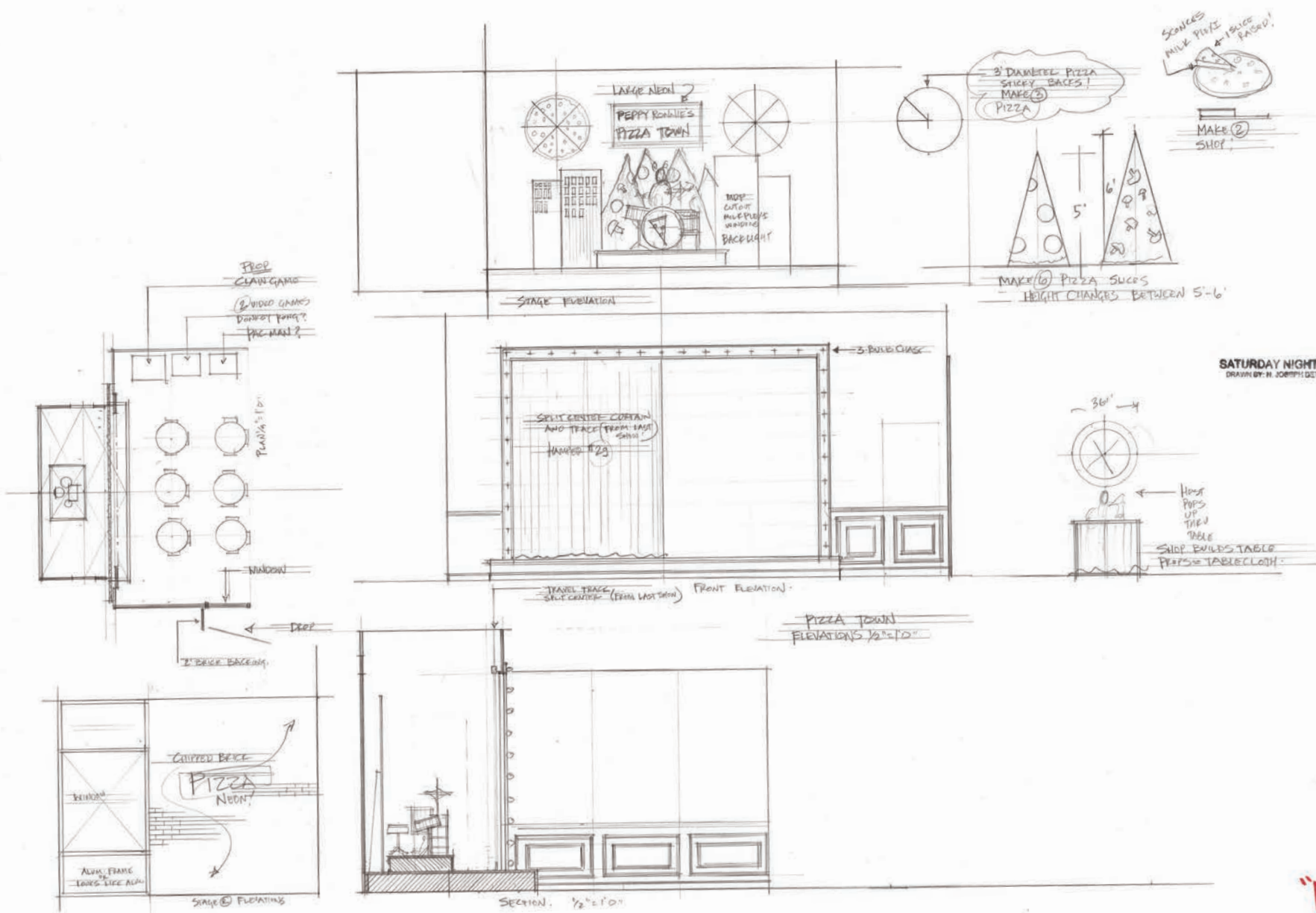
SATURDAY NIGHT LIVE  
DRAWN BY: KEITH IAN RAYWOOD











SAUCES  
MILK PIZZA  
+ 1 SAUCE PASTO!

3' DIAMETER PIZZA  
STICKY BAGES!  
MAKE (3)  
PIZZA

MAKE (2)  
SHOT

MAKE (6) PIZZA SUCCES  
HEIGHT CHANGES BETWEEN 5'-6'

SATURDAY NIGHT LIVE  
DRAWN BY: N. JOHNNI DETULLO

HOOP  
POPS UP  
TIED  
BEHIND  
SLIP BUILT TABLE  
PEEPS = TABLECLOTH

PIZZA TOWN  
ELEVATIONS 1/2" = 1'-0"

SECTION 1/2" = 1'-0"

STAGE (E) ELEVATIONS

SNL '16-17  
AZIZ ANSARI / BIG SEAN  
DR# 146  
SNLA 1716  
DATE 1/21/2017  
TYPE OF SKETCH

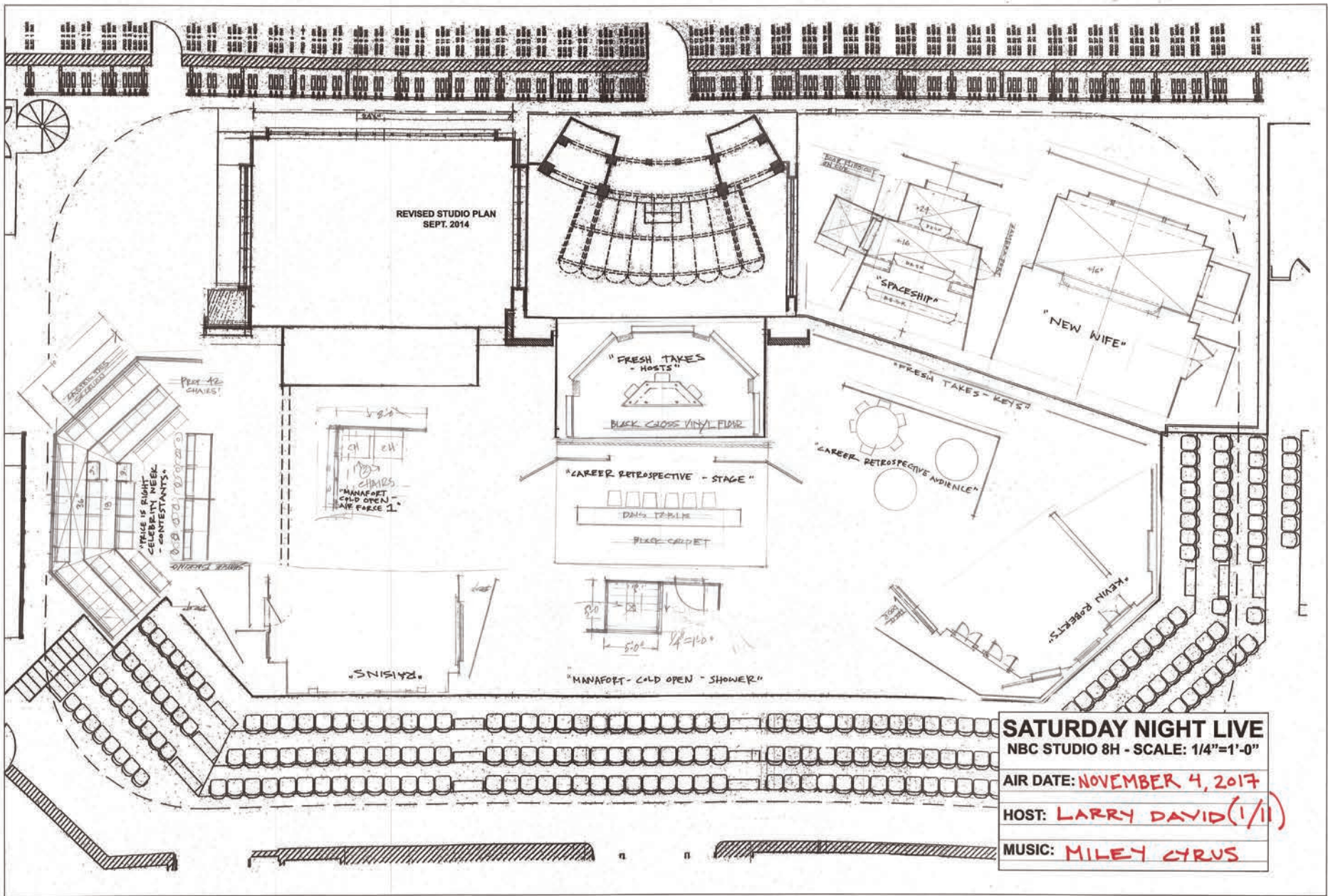
KIDS' RESTAURANT  
"PIZZA TOWN"

WEEKEND UPDATE WEEKEND UPDATE WEEKEN









**SATURDAY NIGHT LIVE**  
 NBC STUDIO 8H - SCALE: 1/4"=1'-0"  
 AIR DATE: NOVEMBER 4, 2017  
 HOST: LARRY DAVID (1/1)  
 MUSIC: MILEY CYRUS









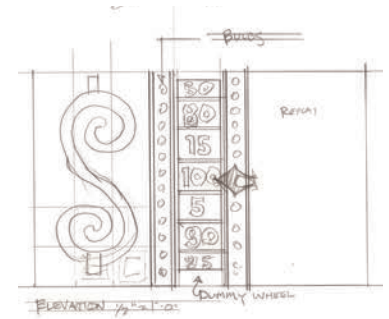
CHRIS

ATIANA

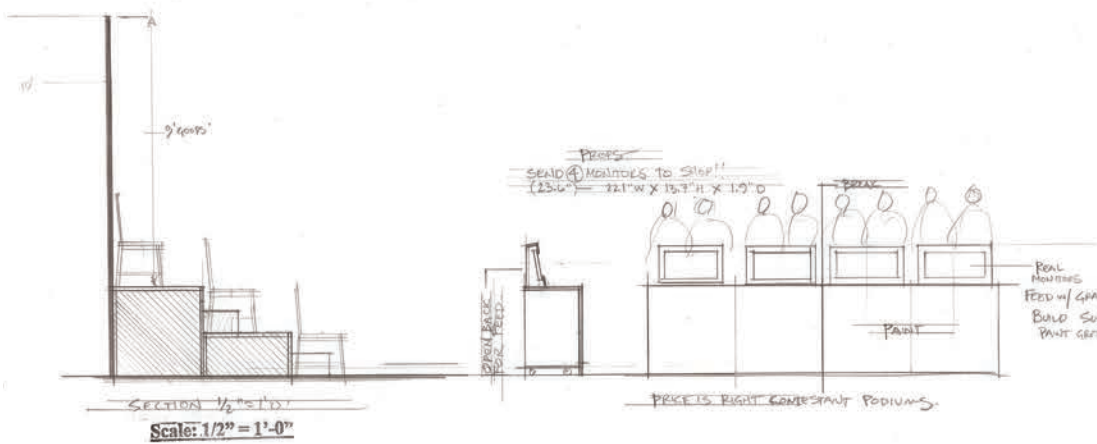
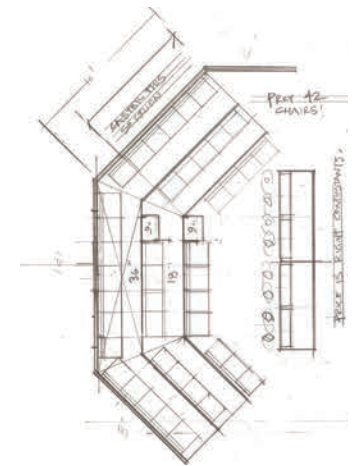
BERNIE

DERRICK

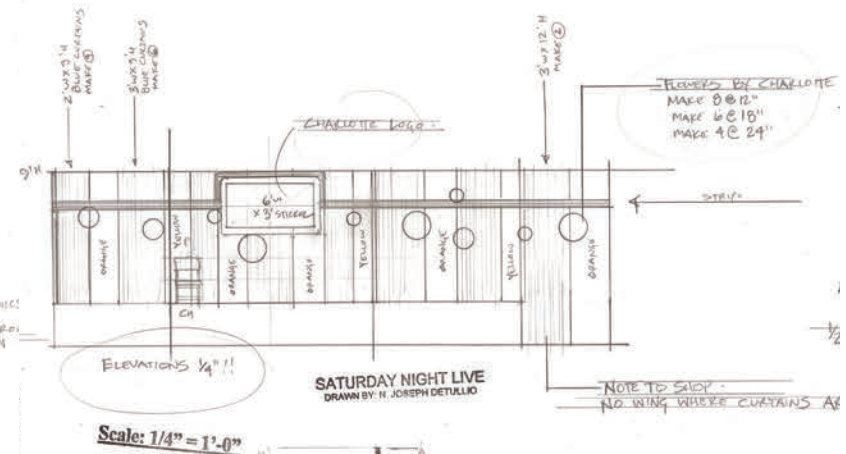
150 TEETH



Scale: 1/2" = 1'-0"



Scale: 1/2" = 1'-0"



Scale: 1/4" = 1'-0"

SATURDAY NIGHT LIVE  
DRAWN BY H. JOSEPH DETULLO

NOTE TO SUDO:  
NO WING WHERE CURTAINS ARE





