

BEAUTIFUL BOY



PRODUCTION DESIGN BY
ETHAN TOBMAN

"I MAKE FILMS BECAUSE THEY OBLIGE ME TO PROCESS MY OWN EXPERIENCES AND TO FACE THE HARD THINGS I NEED TO. I LEARNED FROM DAVID AND NIC'S BOOKS THAT MY FAMILY AND I HAD CERTAIN PREJUDICES TOWARDS ADDICTS' BEHAVIOUR. WE HADN'T SEEN ALL THE WAYS TO DEAL WITH IT, WAYS TO TRY TO HELP. THEIR STORY INSPIRED US TO MAKE A FILM THAT WE HOPE IN SOME SMALL WAY COULD GIVE VOICE TO SO MANY PEOPLE STRUGGLING WITH ADDICTION. TO SHOW IN A SIMPLE, HONEST AND RAW WAY, THE COMPLEXITY OF THE ILLNESS.

IT WAS AN INCREDIBLE JOURNEY."

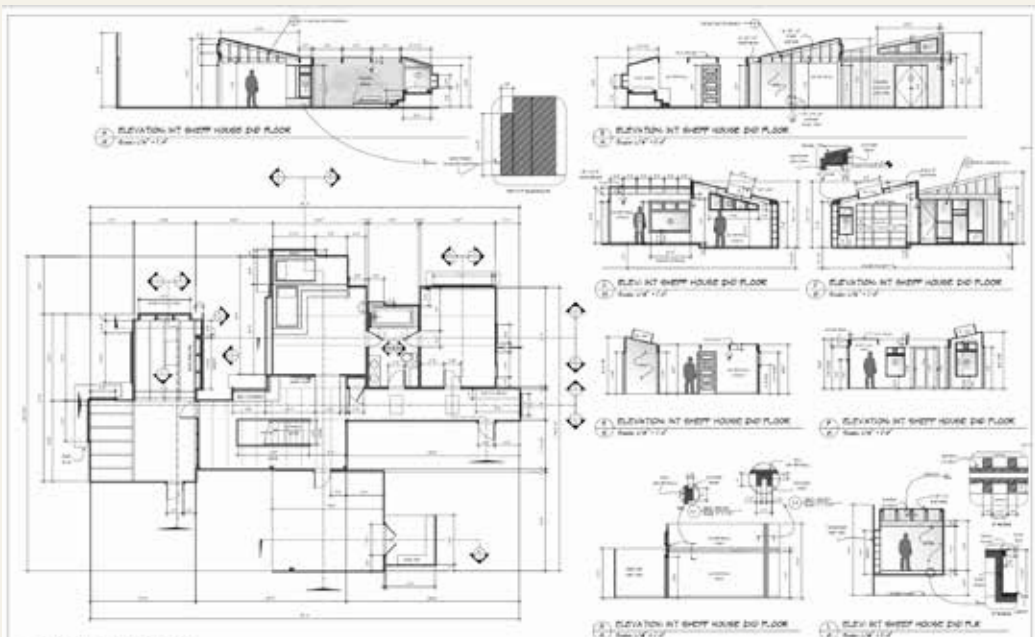
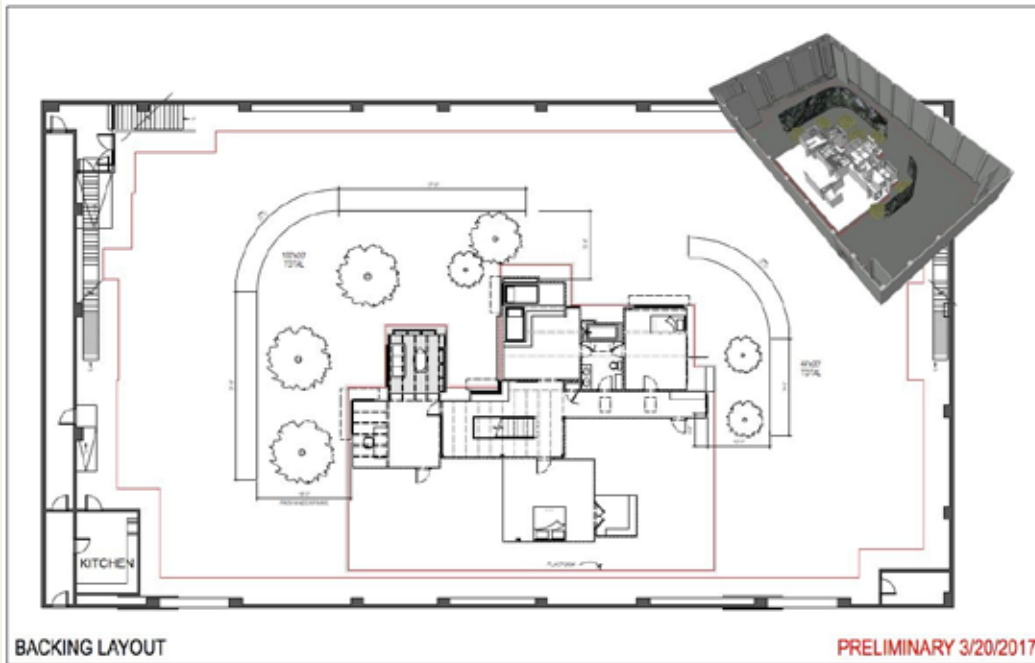
-FELIX VAN GROENINGEN
DIRECTOR

"FINDING PRACTICAL LOCATIONS IN LOS ANGELES TO MATCH THE SHEFFS' COASTAL NORTHERN CALIFORNIA ENVIRONMENT TOOK SOME TIME. A VISIT TO THEIR HOME IN INVERNESS, A SMALL BAYSIDE TOWN IN MARIN COUNTY, DEMONSTRATED HOW IMPORTANT ART, NATURE AND ARCHITECTURE WERE TO THE FAMILY. WE SAW FROM HOW THEY LIVE THEY HAVE A VERY STRONG SENSE OF DESIGN. WE STUDIED THEIR HABITS, THEIR INCONSISTENCIES, TO MAINTAIN THEIR INTEGRITY. AND WHAT WE DISCOVERED WAS A HOME THAT FELT LIKE THE LAST PLACE A CHILD WOULD WANT TO ESCAPE FROM, A PLACE THAT EMBRACED NATURE AND ARTISTIC EXPRESSION. THIS CONTRADICTION BECAME THE FOUNDATION FOR OUR DESIGN CHOICES, AS WELL AS THE IDEA OF HIDING IN PLAIN SITE."

-ETHAN TOBMAN
PRODUCTION DESIGNER

"

SHEFF GROUNDPLANS



SHEFF HOME ILLUSTRATIONS



ILLUSTRATIONS BY ETHAN TOBMAN, PRODUCTION DESIGNER

SHEFF HOME SET PHOTOS



SHEFF HOME SET PHOTOS



SHEFF HOME ILLUSTRATIONS



ILLUSTRATIONS BY ETHAN TOBMAN, PRODUCTION DESIGNER

SHEFF HOME SET PHOTOS



SHEFF HOME ILLUSTRATIONS



ILLUSTRATIONS BY ETHAN TOBMAN, PRODUCTION DESIGNER

SHEFF HOME SET PHOTOS



SHEFF HOME SET PHOTOS



SHEFF HOME SET PHOTOS



ON THE DESIGN OF THE SHEFF HOUSE:

"WHEN YOU FORGET THAT YOU'RE ON A SET, THAT'S THE BEST INDICATION OF HOW WELL THE PRODUCTION DESIGN HAS GONE. WHEN YOU JUST FEEL LIKE YOU'RE IN AN ENVIRONMENT, AND YOU DON'T SENSE THE CAMERAS AND THE CREW, AND ALL YOU FEEL IS THE HOUSE? I THINK THAT'S THE TRUE MARK OF A SUCCESSFUL PRODUCTION DESIGN.

-STEVE CARELL
"DAVID SHEFF"

SHEFF HOME SET PHOTOS



SHEFF HOME SET PHOTOS



SHEFF HOME SET PHOTOS



SHEFF HOME ILLUSTRATIONS



ILLUSTRATIONS BY ETHAN TOBMAN, PRODUCTION DESIGNER

SHEFF HOME SET PHOTOS



"IT WAS SO IMPORTANT THAT THE FOUR REHAB CLINICS REPRESENTED DIFFERENT STAGES OF THIS FAMILIES'- OF EVERY FAMILIES'- INCREASING SENSE OF DESPERATION. FIRST, YOU THINK IT'S A PROBLEM YOU CAN FIX: LET'S NOT OVERREACT, BUT LET'S REACT. WHEN THAT DOESN'T WORK, THEY THINK, 'WE HAVE RESOURCES, LET'S THROW THEM AT THIS'. AND SO THE FIRST REHAB- A TEMPORARY SOLUTION- PROGRESSES TO AN AUSTERE, ALMOST REGAL RETREAT.

WHEN THAT FAILS, YOU TAKE A STEP BACK: OKAY, THIS ISN'T WORKING. THIS IS GOING... TO TAKE A SOME TIME. AND SO THE REHABS- AND HOPE- DEGENERATE.

ALL THE WHILE, WE'RE CONTRASTING THE HOUSE, SO INGRATIATED WITH NATURE, WITH THE CLINICS LACK THEREOF. WE MOVE FURTHER AND FURTHER AWAY FROM ANYTHING NATURAL. CONCRETE SLABS, INHERITED FURNITURE, FAUX LAMINATE, DEAD PLANTS. NOTHING IS ALIVE ANYMORE. NOTHING IS NATURAL.

IN OUR RESEARCH, IN OUR LIFE EXPERIENCES, WE REALIZED THE SUPPORT NETWORKS ARE ALL IN BASEMENTS. BACK ROOMS. SUBTERRANEAN SPACES. FAMILIES HIDE THEIR STRUGGLE. YET NEARLY EVERY MEMBER OF OUR CREW HAD AT LEAST ONE DEAR LOVED ONE WHO WAS OR IS A SUFFERER OF ADDICTION."

-ETHAN TOBMAN
PRODUCTION DESIGNER

REHAB SET PHOTOS



REHAB SET PHOTOS



REHAB SET PHOTOS



REHAB SET PHOTOS



REHAB SET PHOTOS



REHAB SET PHOTOS



INT CAFE SET PHOTOS



INT CAFE SET PHOTOS



DONUT SHOP LOCATION / ILLUSTRATION



ILLUSTRATIONS BY ETHAN TOBMAN, PRODUCTION DESIGNER

DONUT SHOP SET PHOTO



NY HOTEL ILLUSTRATION



ILLUSTRATIONS BY ETHAN TOBMAN, PRODUCTION DESIGNER

NY HOTEL SET PHOTOS



NY HOTEL SET PHOTOS



INT DORM ILLUSTRATION



ILLUSTRATIONS BY ETHAN TOBMAN, PRODUCTION DESIGNER

INT DORM SET PHOTO





THANK YOU