

H O M E C O M M I N G

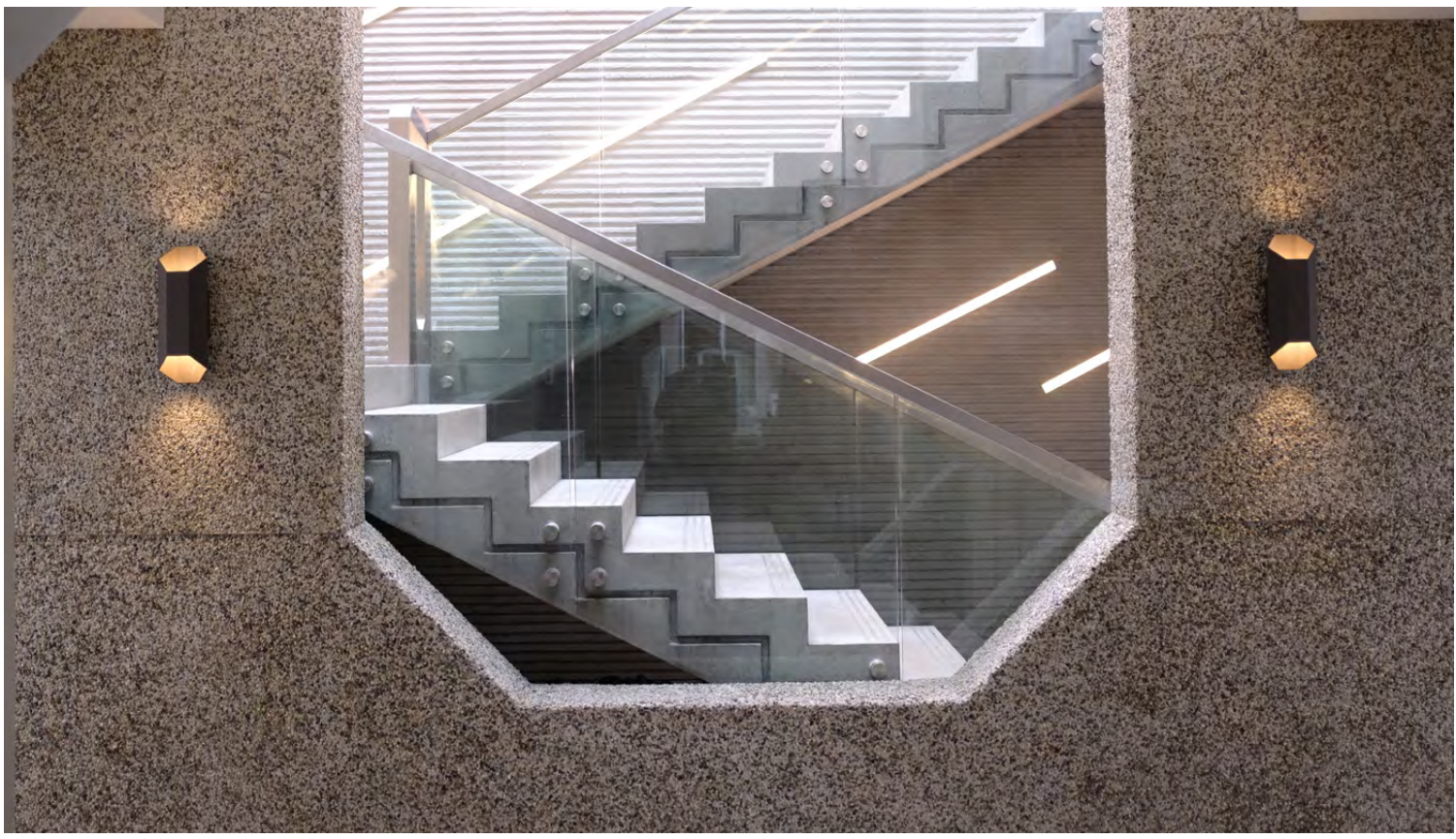


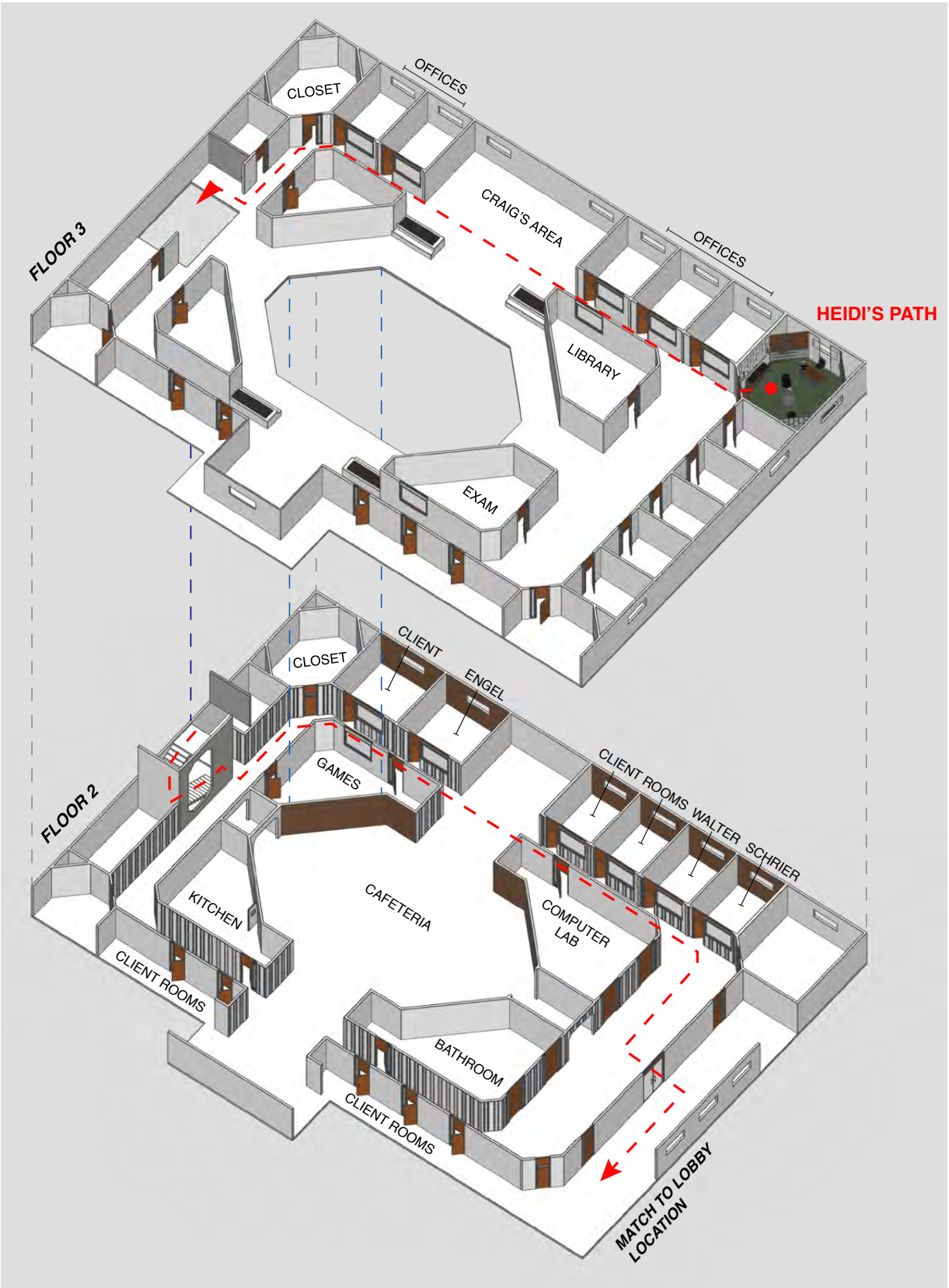


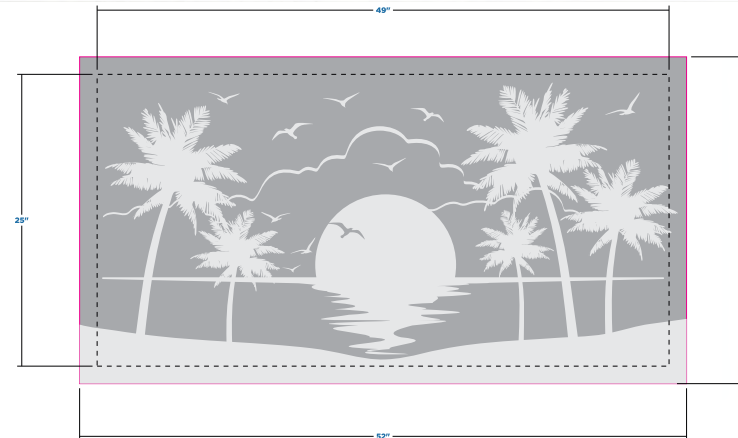
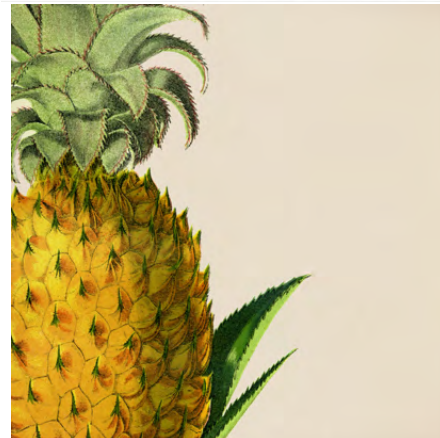
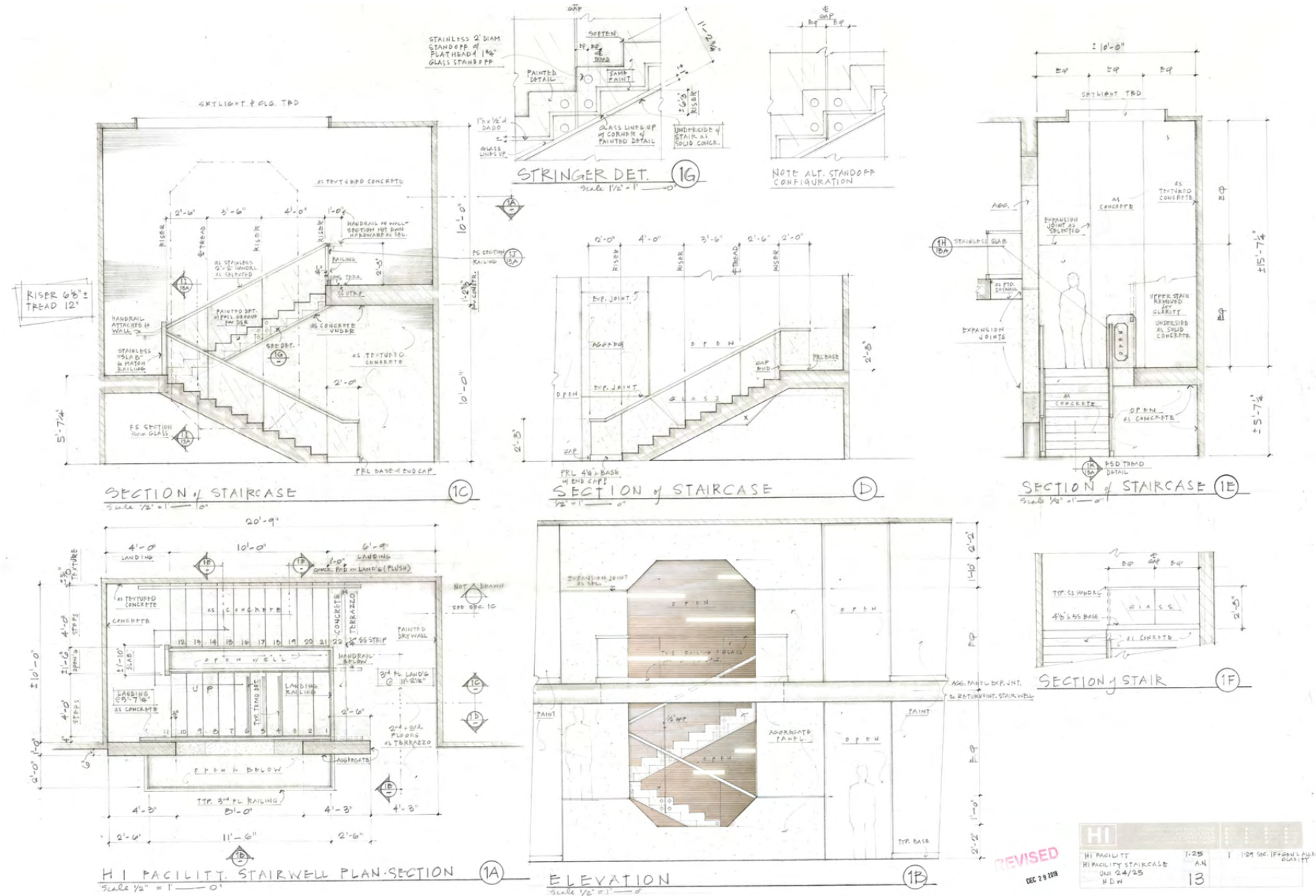
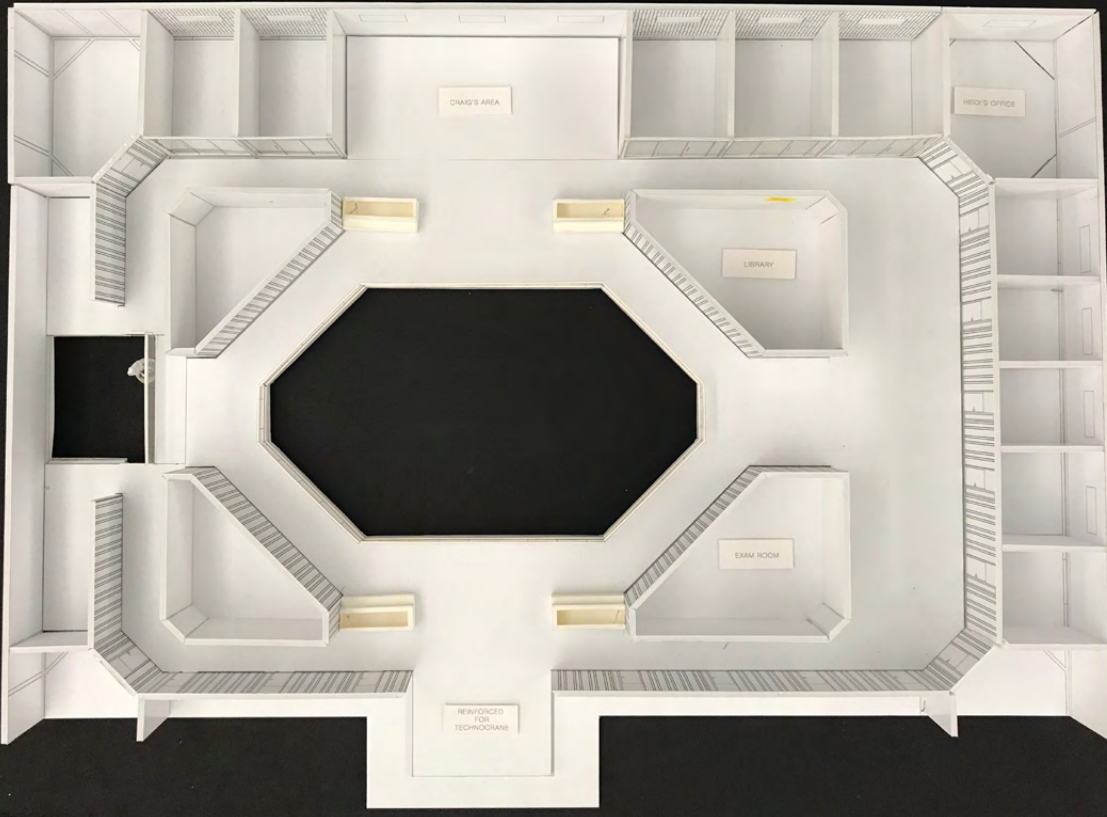
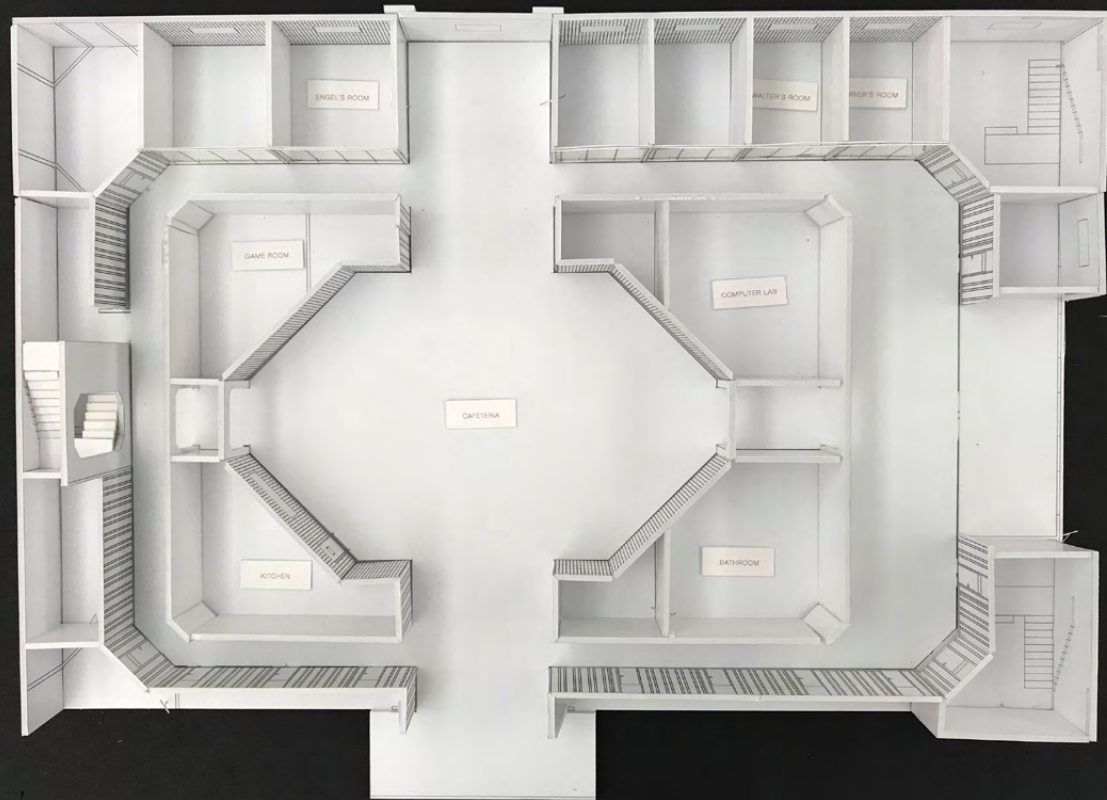
THE FACILITY - STAGE





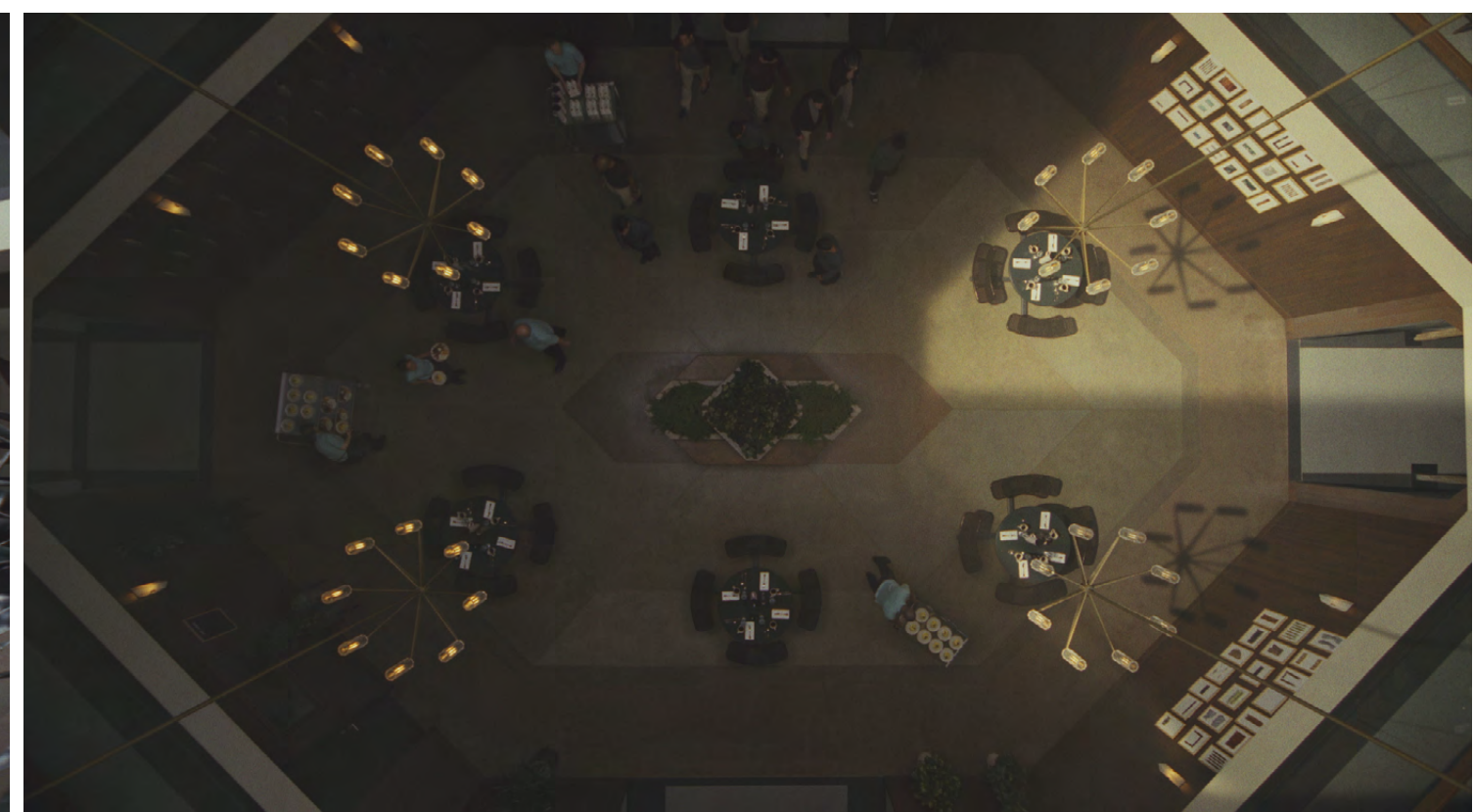






10'H X 14'W WALL WITH 1" MOSAIC TILE : 1' = FOOT

ILLUSTRATION



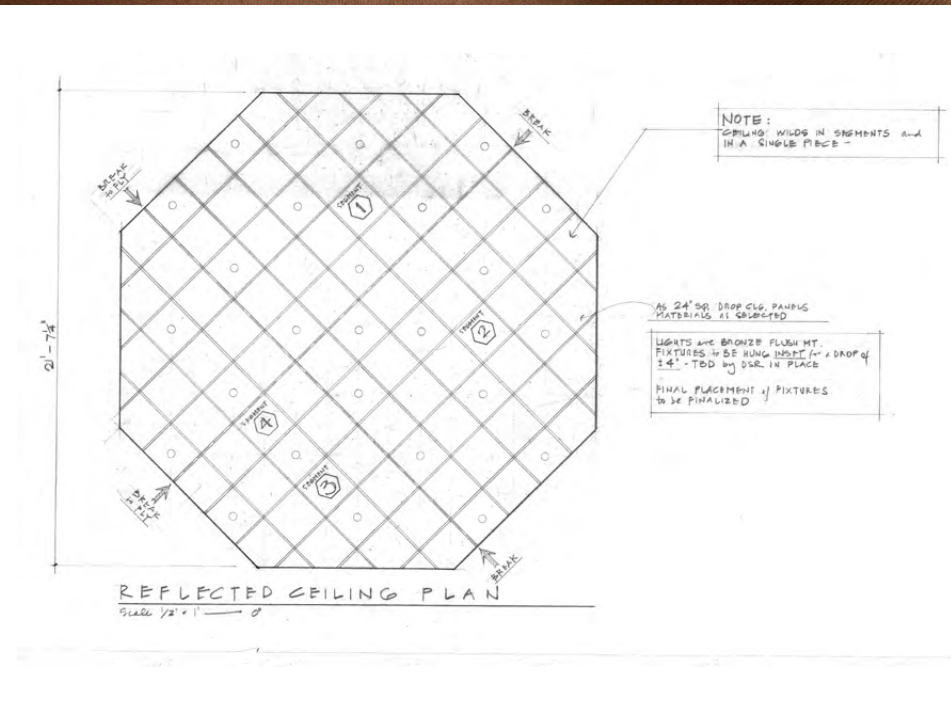
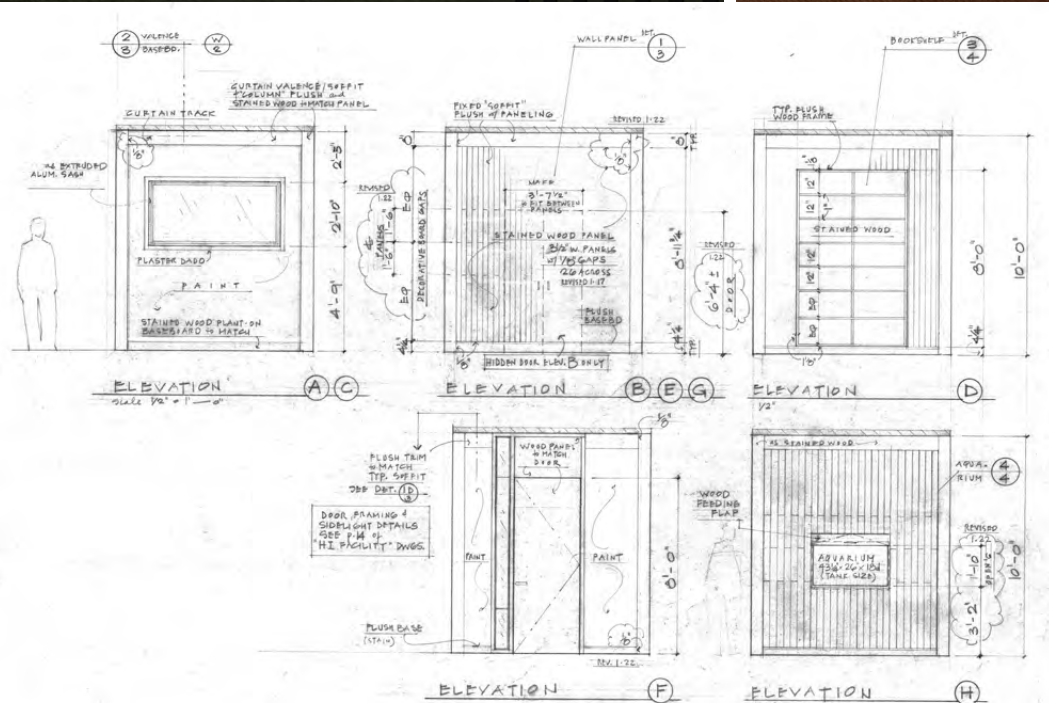
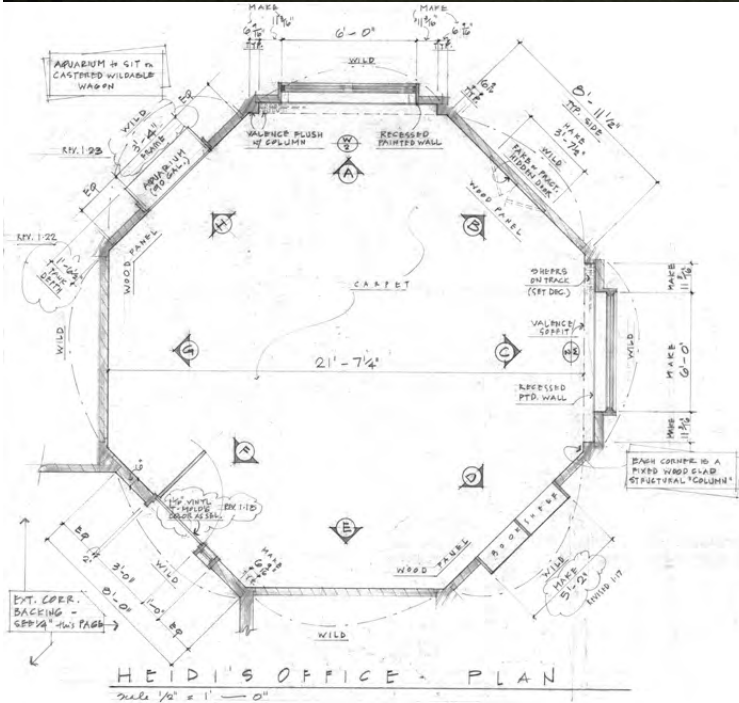


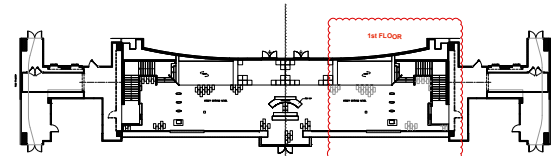
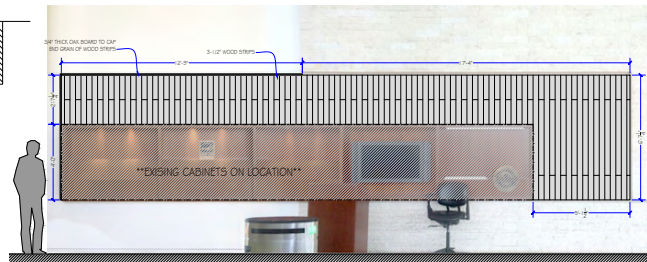


HEIDI'S OFFICE - STAGE

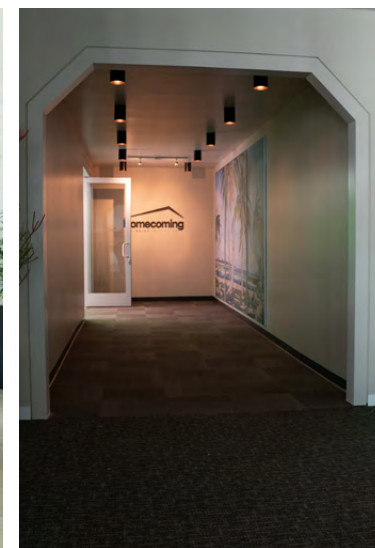


ILLUSTRATION





The image is a composite. At the top center is a logo for Universal Cable Productions, featuring a stylized 'U' and 'C' inside a circle. To the right of the logo is a large, red, distressed 'RELEASED' stamp with the date '(02-28-18) 112' below it. Below the logo and stamp is a document with a grid of information. The document has a header with 'HI' in a large, bold, black font. Below the header is a section titled 'UNIVERSAL CABLE PRODUCTIONS' with the text 'PRODUCTION COMPANY ANASTASIA WHITE' and 'ART DIRECTOR RICHARD BEIGUM' and 'CONSTRUCTION SUPERVISOR KEVIN HANST'. Below this is a table with columns for 'DATE', 'TIME', 'LOCATION', 'REMARK', and 'CITY/STATE/COUNTRY'. The table contains several rows of data, including 'Int. H.I. FACILITY LOBBY', 'LOBBY SET ELEMENTS', 'TOYOTA BUILDING', and 'D. MYRRE'. The table is partially obscured by a large, bold, black '02' in the bottom right corner.





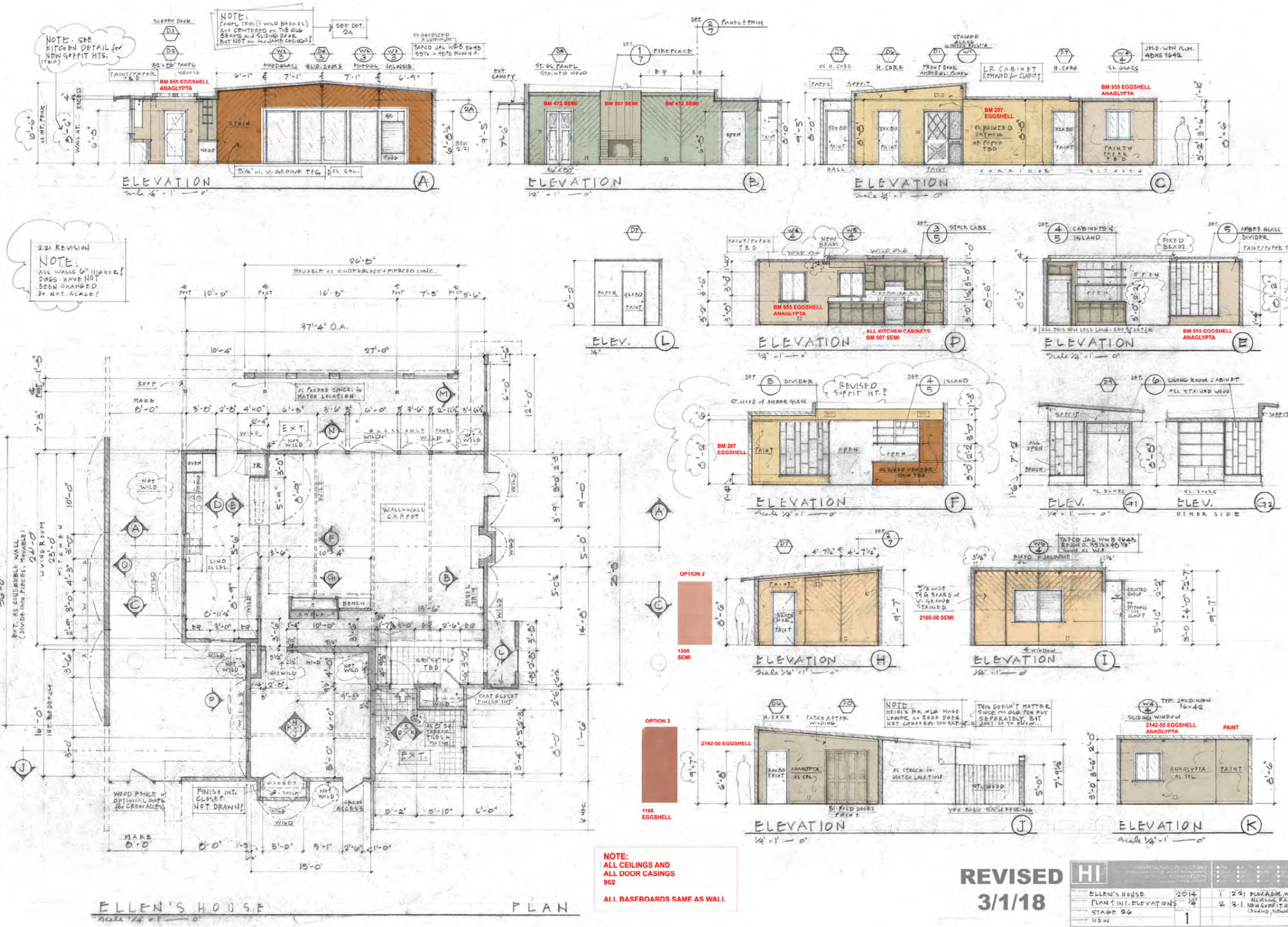
FAT MORGAN'S- LOCATION



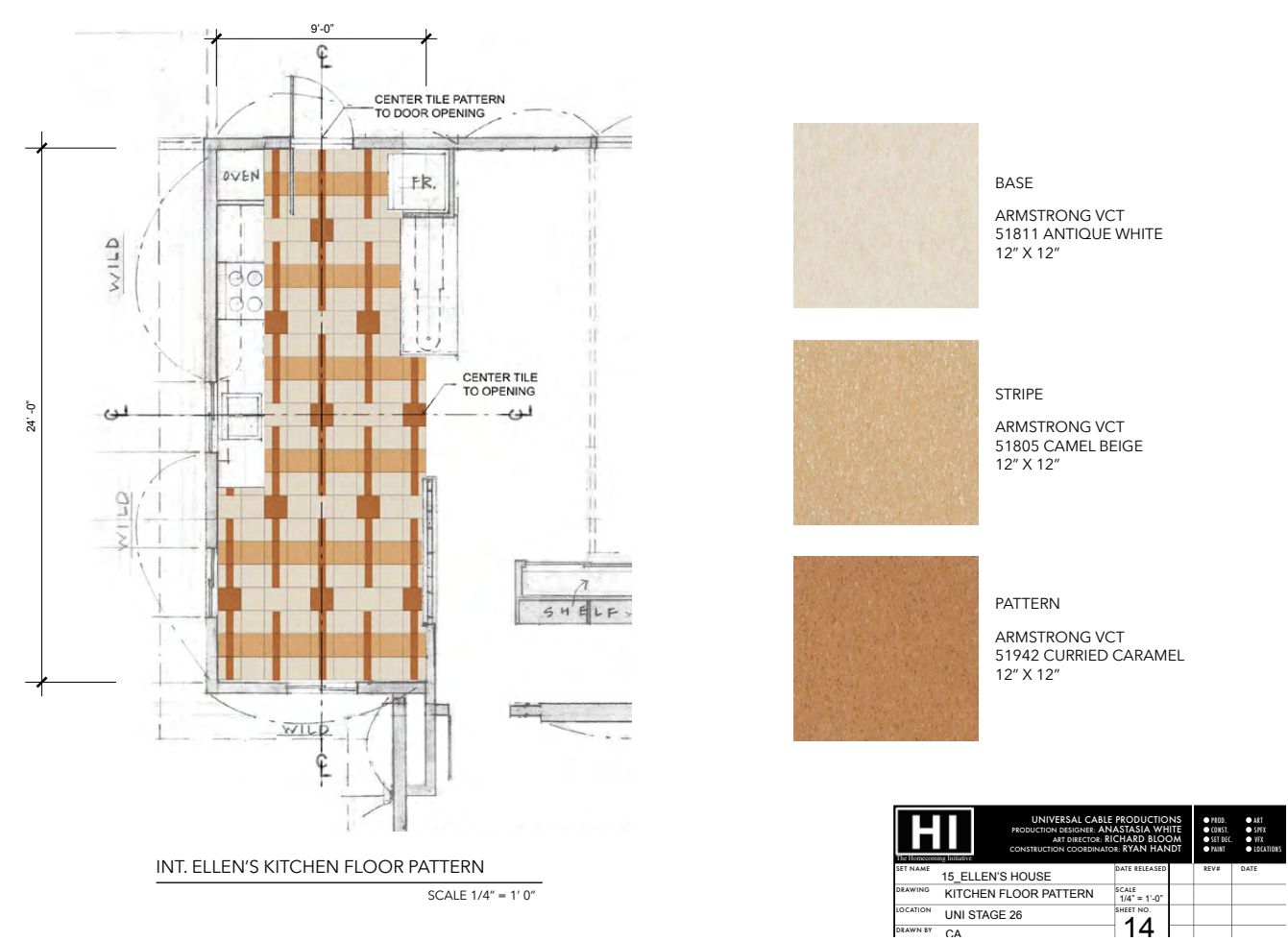





ELLEN'S HOUSE - STAGE









 **GEIST**

GEIST HQ- LOCATION





