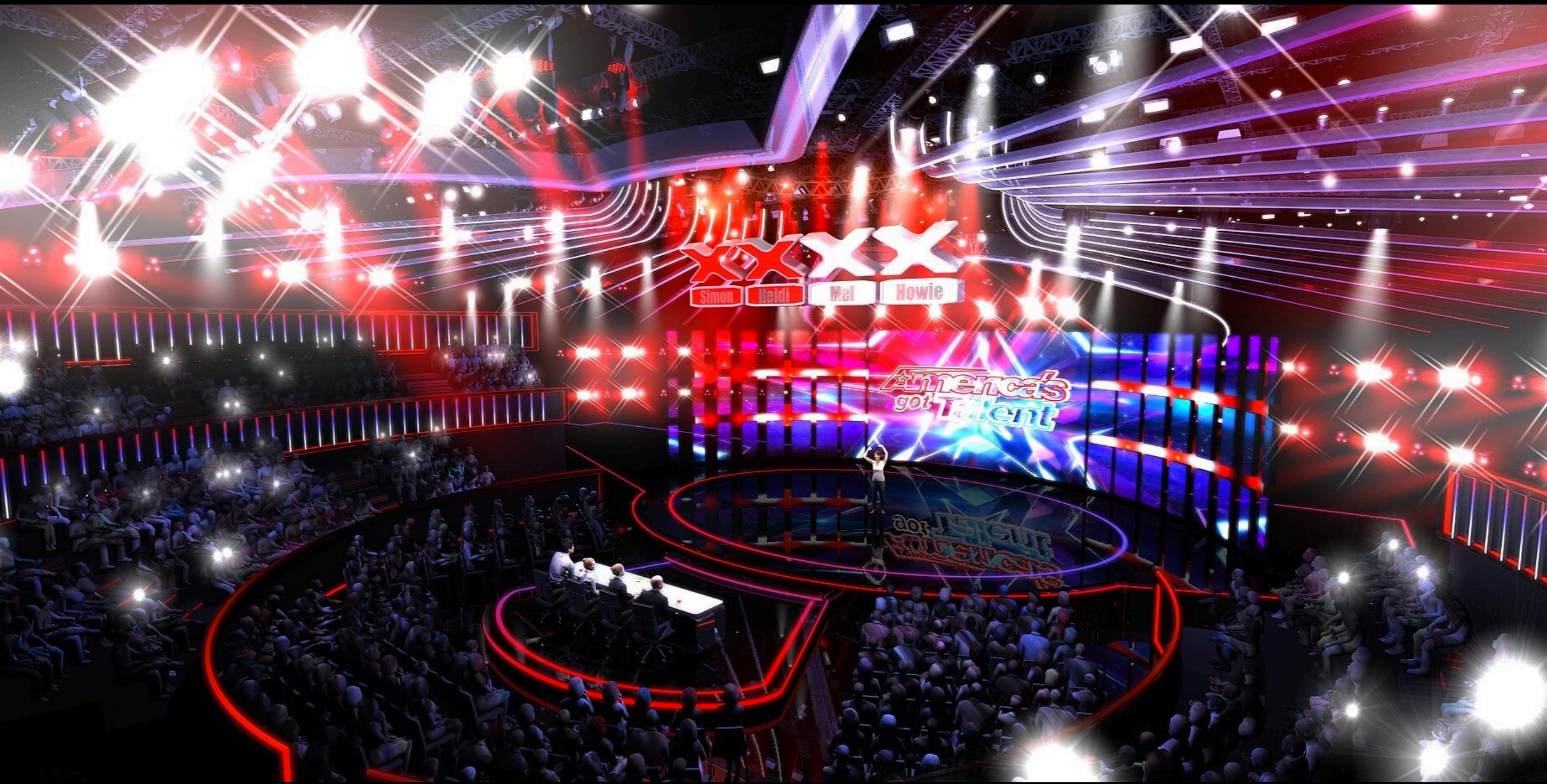




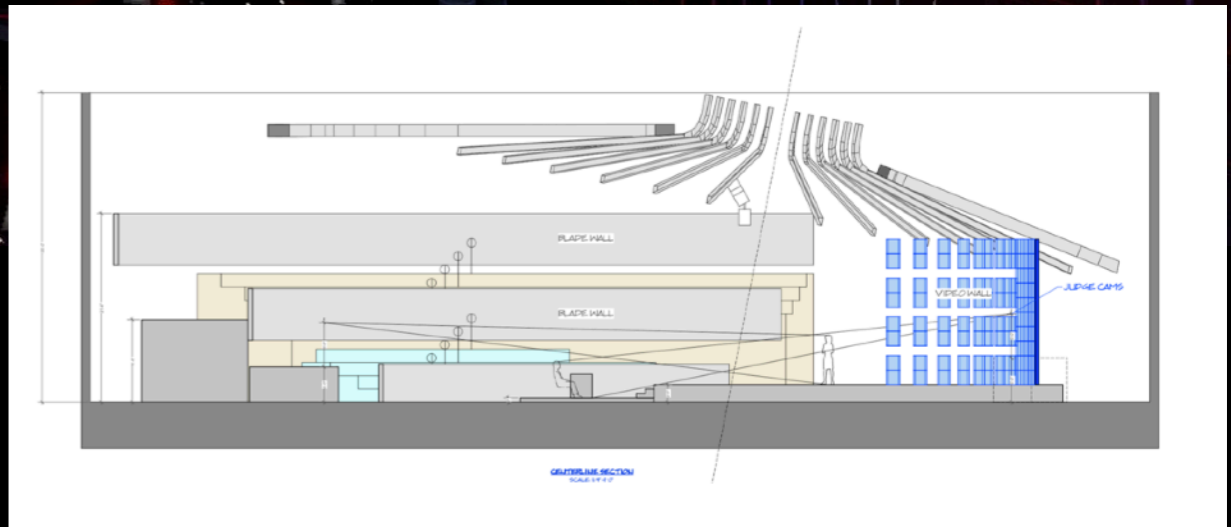
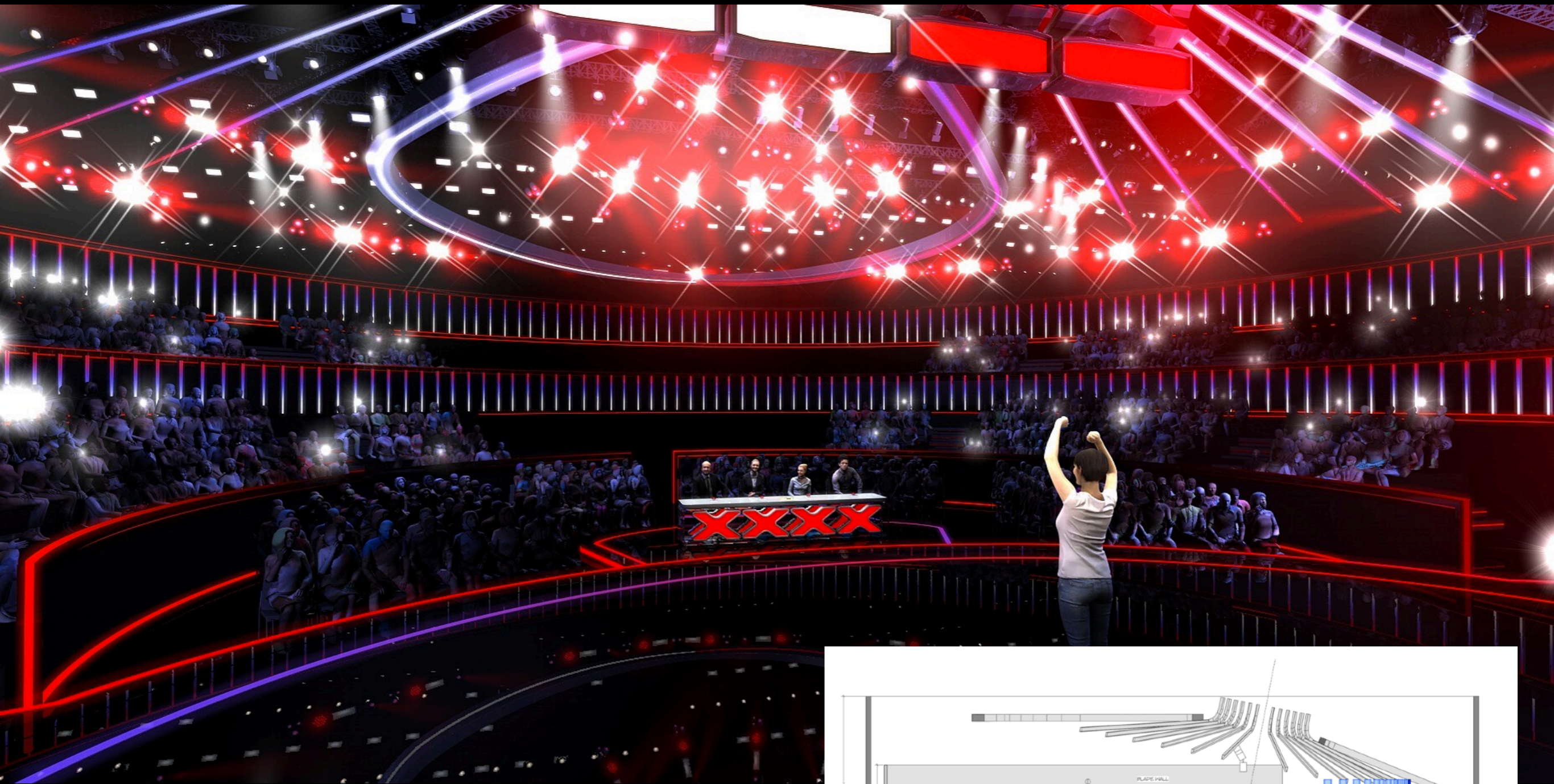
America's got Talent

AMERICA'S GOT TALENT
VARIETY, REALITY OR EVENT SPECIAL

PRODUCTION DESIGNER: FLORIAN WIEDER
SUPERVISING ART DIRECTOR: JOE O'NEIL
ART DIRECTOR: LAUREL BROCK
ART DIRECTOR: GREGG RAINWATER
ASST. ART DIRECTOR: KERRY HENNESSY
SCENIC ARTIST: DENA D'ANGELO



JUDGE CUTS RENDERING



JUDGE CUTS RENDERING



JUDGE CUTS



JUDGE CUTS



JUDGE CUTS BACKSTAGE



JUDGE CUTS BACKSTAGE



X
SIMON

X
HEIDI

X
MEL B

X
HOWIE

LIVE SHOW



LIVE SHOW



LIVE SHOW



LIVE SHOW



LIVE SHOW



LIVE SHOW

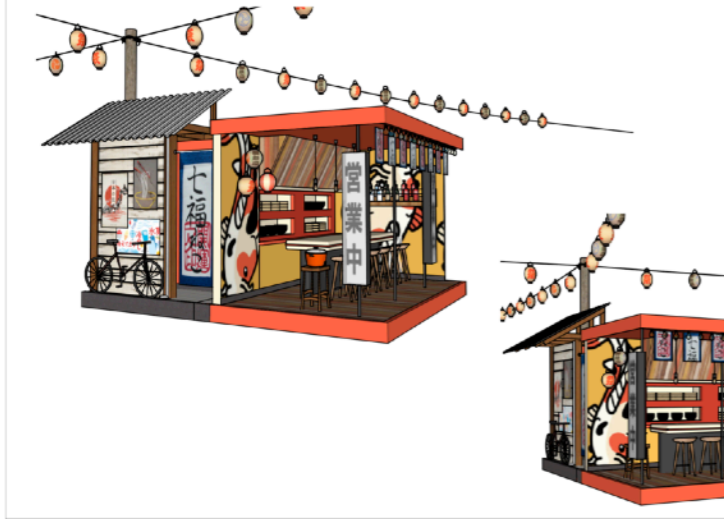


LIVE SHOW



LIVE SHOW BACKSTAGE

AGT: YUMBO DUMP - OVERALL LOOK
ISO



DRAWN: 8.12.18
REVISIONS:
2.0 JUMP
P.A.

AGT: QUINN & MISHA - BLADE LAYOUT
Scale: NTS

BACK BAR SHELVES
TO GET (X3) BLADES
BOTH LEVELS



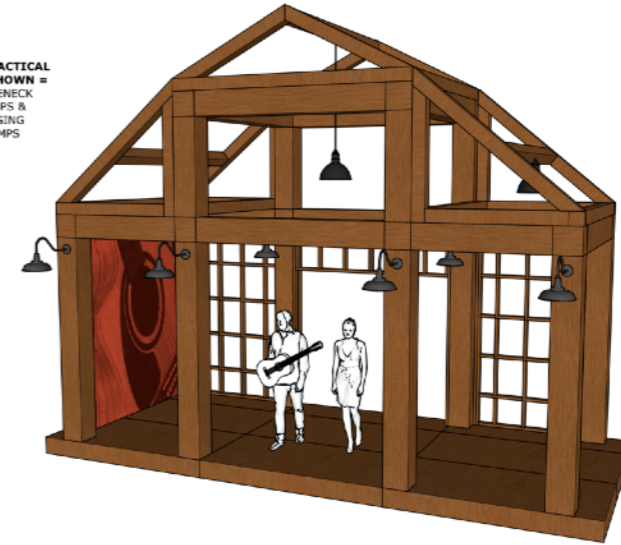
BAR TOP & BASE
TO GET ROW OF (X4)
BLADES EACH

BLADE ROOF STRUCTURE
ATTACH TO ROOF TRUSS-
DETAIL NEXT PAGE

DRAWN: 8.16.18
REVISIONS:
QUINN & MISHA
1. GROUP B

AGT: US THE DUO - LIGHTING LAYOUT
Scale: NTS

CURRENT PRACTICAL
LIGHTING SHOWN =
(x5) GOOSENECK
BARN LAMPS &
(x3) HANGING
BARN LAMPS



DRAWN: 8.16.18
REVISIONS: 6.26.19

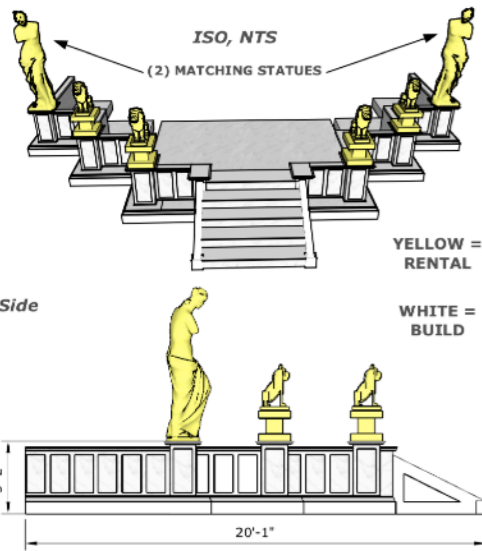
ACT: US THE DUO
SHOW: GROUP C

Laurel Brock
ART DIRECTOR
512.698.1630 cell

PRODUCTION DESIGNER:
WIEDER DESIGN STUDIOS
SUP. ART DIRECTOR: J. O'NEIL
SCALE: AS NOTED



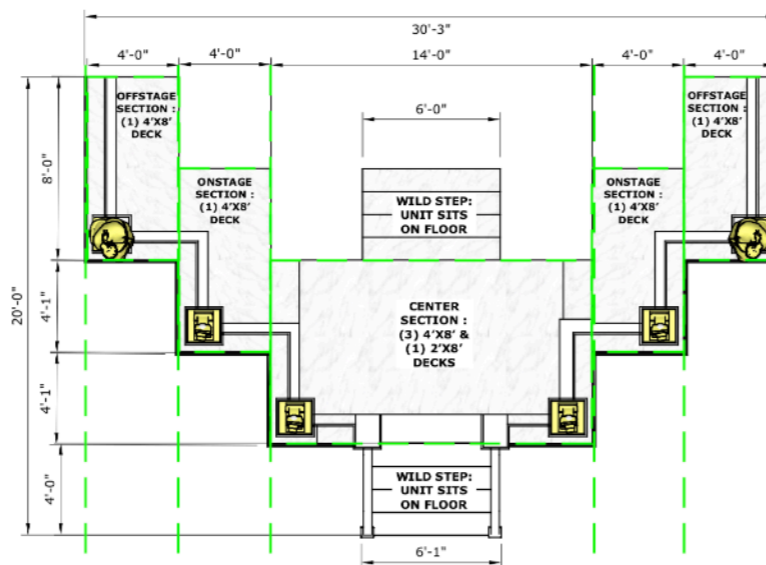
AGT: HUMAN FOUNTAINS - PLATFORM, OVERALL LOOK
Scale: 1/4" = 1'



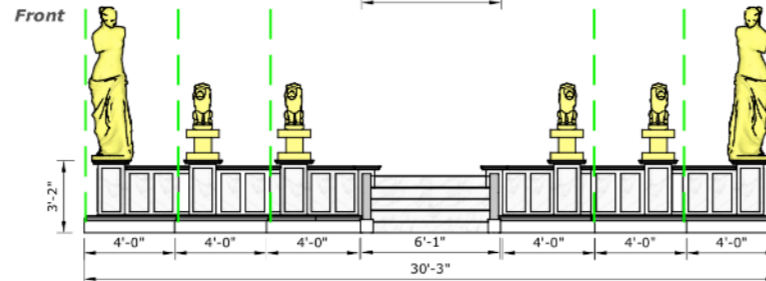
YELLOW =
RENTAL
WHITE =
BUILD

- NOTES:**
- PLATFORM TO BE IN (5) DECK SECTIONS, + (2) STAIRCASES
 - DECK SECTIONS DETAILED ON OTHER PAGES.
 - DECK SECTIONS =
OFFSTAGE SECTION: REVERSE & REPEAT, (2) TOTAL
ONSTAGE SECTION: REVERSE & REPEAT, (2) TOTAL
CENTER SECTION
 - STATUES AND PLINTHS TO BE RENTALS (IN YELLOW)
 - ASSUME FOR ALL DECKS 1" CASTER CLEARANCE
 - STAIR SECTIONS TO GO ON FLOOR
 - DECK SECTIONS AND STAIRS TO BUT TOGETHER TO LOOK AS
SEAMLESS AS POSSIBLE - DISCUSS
 - SEE DETAILS FOR MouldING CALL-OUT
 - FINISH TO BE PAINT - PAINT AS MARBLE
 - CALL LAUREL IF NEEDED AT (512) 698-1630

Plan



Front



DRAWN: 8.2.18
REVISIONS:

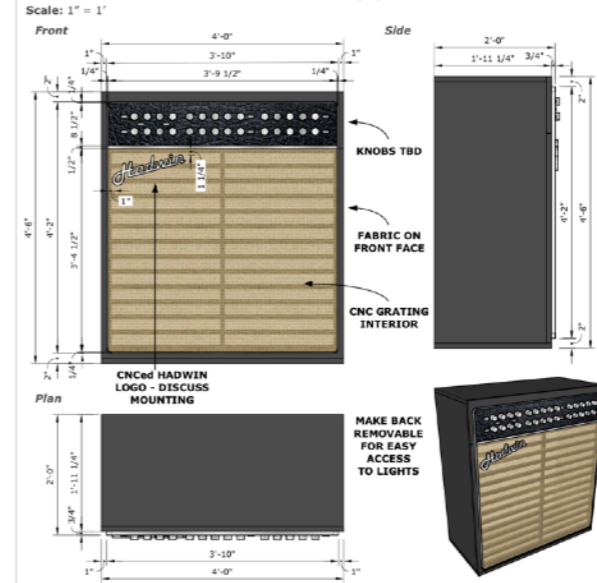
ACT: HUMAN FOUNTAINS
SHOW: GROUP A

Laurel Brock
Art Director
512.698.1630 cell

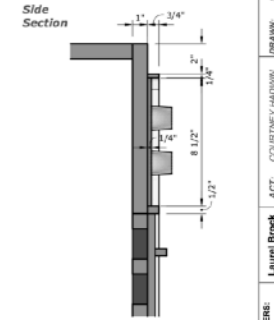
PRODUCTION DESIGNER:
WIEDER DESIGN STUDIOS
SUP. ART DIRECTOR: J. O'NEIL
SCALE: AS NOTED



AGT: COURTNEY HADWIN - LIGHTBOX AMPS - LARGE AMPS (x8)
Scale: 1" = 1'



Scale: 3" = 1'



- NOTES:**
- BUILD (x8) LARGE LIGHTBOX AMPS & (x2) SMALL
 - WOOD CONSTRUCTION
 - FABRIC TO COVER LIGHTBOX FACE
 - LIGHTBOX TO HAVE CNC'D GRATING INTERIOR
 - CNC "HADWIN" LOGO ON FRONT FACE
 - KNOBS TBD - POSSIBLY DOWELS OR PURCHASED
 - FALX LEATHER FABRIC ON FACE BEHIND KNOBS
 - DISCUSS METAL TRIM DETAIL
 - LIGHTBOXES MAY STACK ON TOP OF EACH OTHER
 - CALL LAUREL IF NEEDED (512) 698-1630

DRAWN: 8.2.18
REVISIONS:

ACT: COURTNEY HADWIN
SHOW: 6981.2

Laurel Brock
ART DIRECTOR
512.698.1630 cell

PRODUCTION DESIGNER:
WIEDER DESIGN STUDIOS
SCALE: AS NOTED





America's got Talent

FOR YOUR CONSIDERATION
VARIETY, REALITY OR EVENT SPECIAL