



WELCOME TO
MARWEN

WELCOME TO MARWEN



MARK'S TRAILER - AERIAL VIEW - VOI - WIP 06
C. SELLARS JULY 6/17

MARK'S TRAILER

WELCOME TO MARWEN



TRAILER INTERIOR - VIEW A - VO4-WIPO1
C. SELLARS JULY 14/17

MARK'S TRAILER

WELCOME TO
MARWEN



TRAILER INTERIOR - VIEW B - V03-WIP01
C. SELLARS JULY 14/17

MARK'S TRAILER

WELCOME TO
MARWEN



MARWEN-TOWN - VIEW B - VO2-WIPO1
C. SELLARS JUNE 19/17

MARWEN

WELCOME TO
MARWEN



MARWEN-TOWN - VIEW A - VO2-WIPO1
C. SELLARS JUNE 19/17

MARWEN

WELCOME TO MARWEN



THE RUINED STOCKING

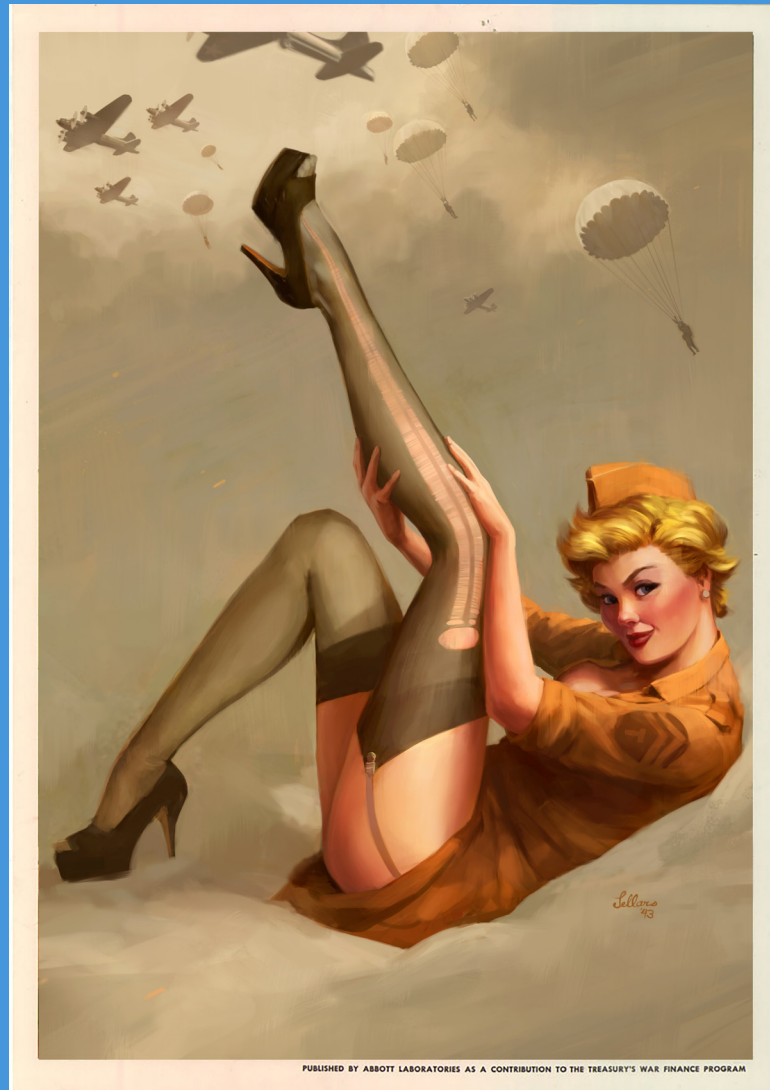
WELCOME TO MARWEN



RUINED STOCKING - INTERIOR A - V05 - WIP 02
C. SELLARS JUNE 05/17

THE RUINED STOCKING

WELCOME TO MARWEN



THE RUINED STOCKING



WELCOME TO
MARWEN



MARWEN CATHEDRAL

WELCOME TO
MARWEN



CHURCH INTERIOR B - V02-WIP04B
C.SELLARS JUNE 8/17

MARWEN CATHEDRAL

WELCOME TO
MARWEN



TEAPOT WIP03
C.SELLARS MAY 10/17

NICOL'S TEA HOUSE

WELCOME TO MARWEN



TEAPOT INTERIOR-A-WIP 07
C SELLARS JUNE 19/17

NICOL'S TEA HOUSE

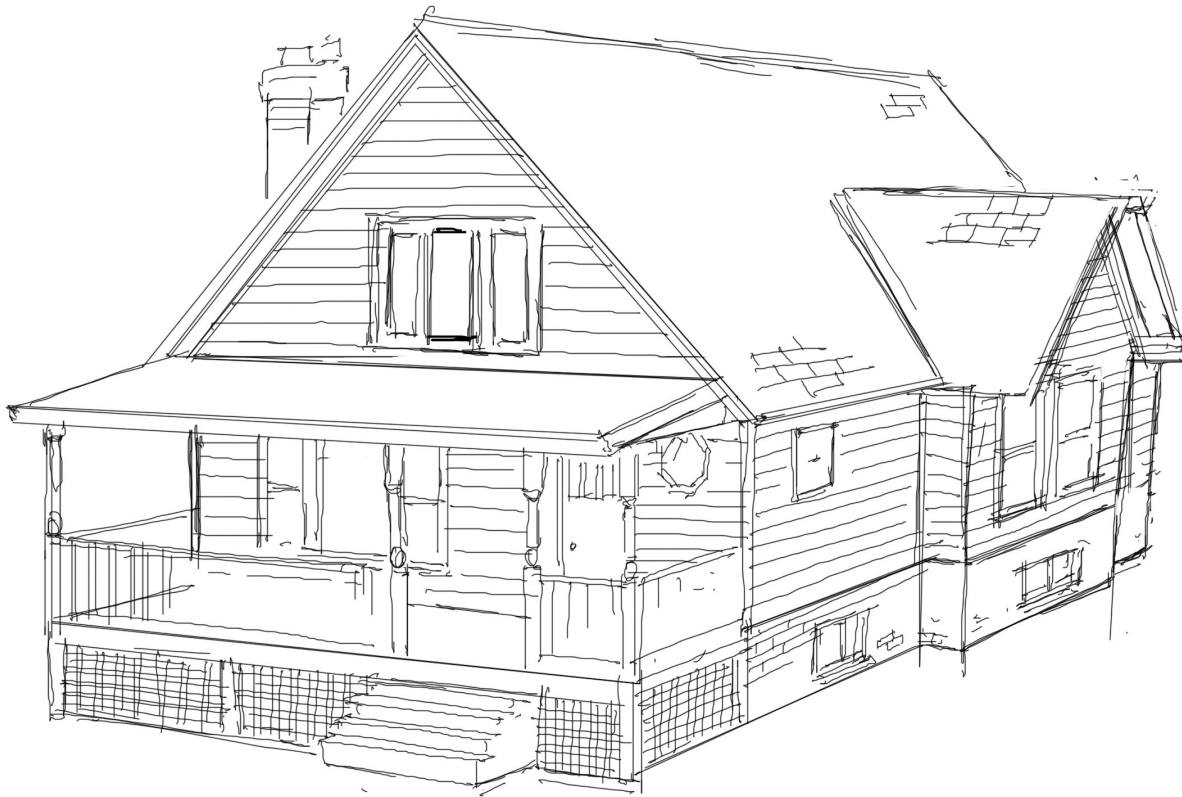
WELCOME TO
MARWEN



TEAPOT INTERIOR B -V05-WIPO2
C.SELLARS JUNE 19/17

NICOL'S TEA HOUSE

WELCOME TO MARWEN

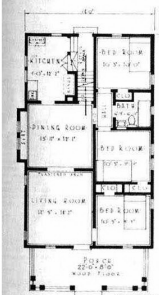


FIVE OR SIX
ROOMS
Monthly Payments
\$30 to \$45
Full Complete
Your Lot

THE WINONA BUNGALOW is a good illustration of the American cottage type house. Though built along simple lines it is sure to hold the eye of the prospective builder because the varicolored roof lines and cozy front porch give it a pleasing view from either perspective.

This house is shown with two floor plans. Plan No. 12010A contains five rooms and is 24 feet wide by 36 feet long. Plan "B" is 24 feet by 40 feet and has a six-room arrangement. The outside walls are planned to be covered with 6-inch bevel siding and we suggest that the entire house be painted white or ivory with red or varicolored roof.

Can be built on a 32-foot lot



Floor Plan
No. 12010A

Honor Bill
The Winona
No. 12010A "Already Cut and Fitted"
For Rooms No. 12010B "Already Cut and Fitted"
For Complete Delivery Price Full
Delivered Price Full
Delivered Price Full

PLAN 12010A
THE ENTRANCE from the front porch of this plan is into the vestibule, which contains a handy closet for outer wraps. The left side of the plan is devoted to living room, size 12 feet 5 inches by 12 feet 11 inches, dining room and kitchen. The opening between the living room and dining room is planned for a plaster arch. The kitchen is well lighted with two large windows and contains a good location for all necessary equipment. Kitchen cabinets consisting of wall unit "A" and counter unit "H" are furnished. Cellar and attic stairs are located to the right of the kitchen, where good storage space is provided. There are two large bedrooms, bath and two closets.

PLAN 12010B
CONTAINS six well arranged rooms. Living room, size 12 feet 5 inches by 14 feet 2 inches, dining room 13 feet 11 inches by 12 feet 1 inch, are connected by a plaster arch partition. The kitchen contains three large windows, a kitchen cabinet counter unit "H", wall unit "A", and additional cabinet space built in above refrigerator which opens on to back hall. Each bedroom has two windows and a good closet.

SPECIAL FEATURES
A COMPLETE description of the guaranteed specifications of this house will be found on pages 99 to 115. Special Features include: 15x6-inch clear bevel siding for side walls, clear oak flooring for living room and dining room, clear maple for kitchen and bath, clear pine for bedrooms. Interior doors clear one-panel subframe design. Kitchen cabinets consisting of one counter unit "H" and one wall unit "A".

Can be built on a 36-foot lot



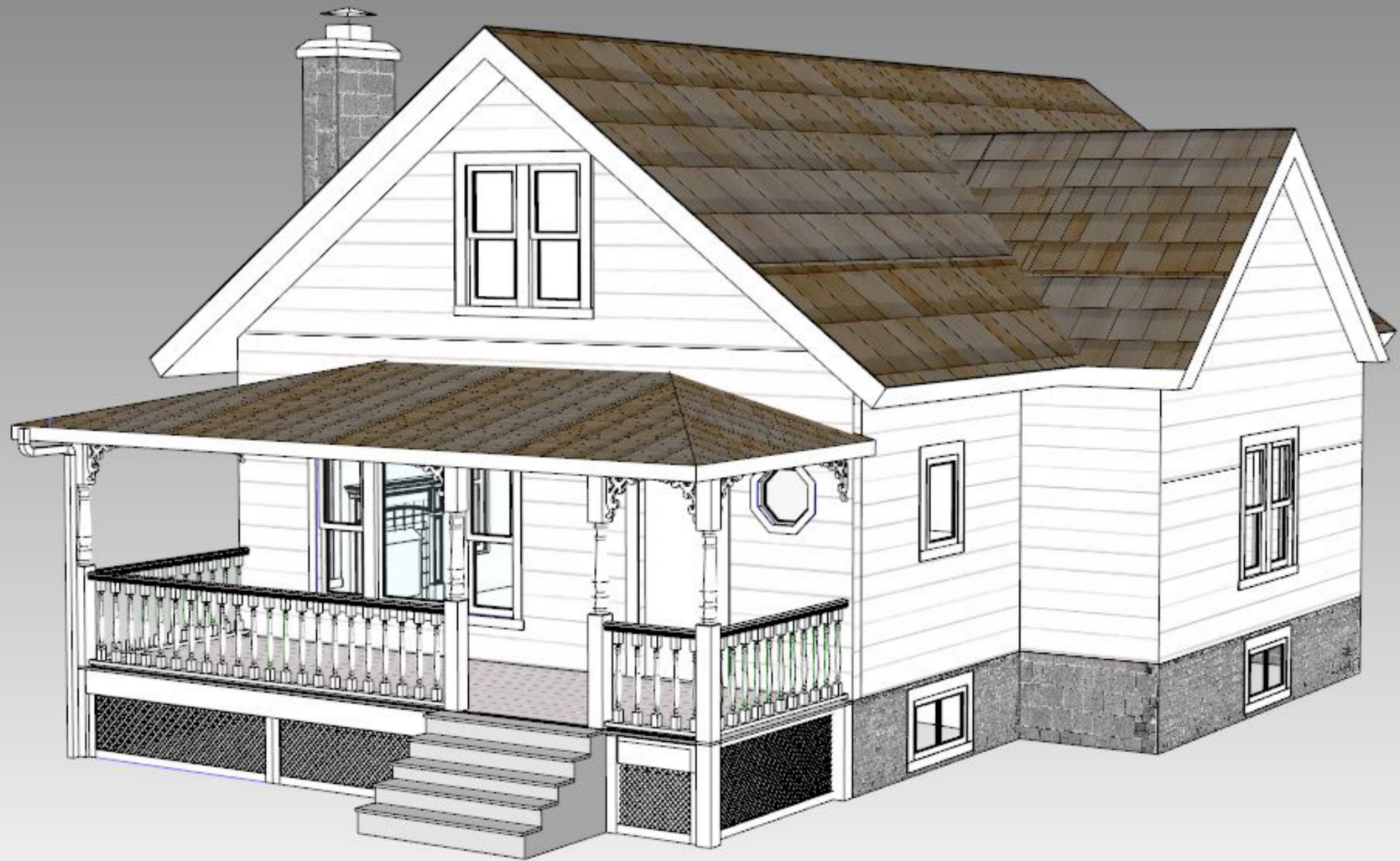
Floor Plan
No. 12010B

PLAN B
ADDITIONAL wall unit built in space above refrigerator. See 115. Wood medicine case and Sh design hardware.

OPTIONS
CAREFULLY study the description of all options shown on pages 99 to 115 and indicate on Information Blank options you desire us to include in complete low delivered price. For Carages see pages 97 and 98. For description of Heating, Light and Plumbing fixtures see pages 100 to 115. For Easy Payment Plan see pages 2 and 120. For Information Blank see pages 100 to 115.

Page

WELCOME TO
MARWEN



NICOL'S HOUSE

WELCOME TO
MARWEN



NICOL'S HOUSE - VIEW A - VO2 - WIP 01
C.SELLARS JULY 20/17

NICOL'S HOUSE

WELCOME TO MARWEN



NICOL'S HOUSE - VIEW B - VO2 - WIP 01
C. SELLARS JULY 20/17

NICOL'S HOUSE

WELCOME TO
MARWEN



THE AVALANCHE-EXTERIOR-VIEW B-DAY-V05-WIP01 (NO CAR)
C.SELLARS JUNE 28/17

AVALANCHE ROAD HOUSE

WELCOME TO
MARWEN



THE AVALANCHE-EXTERIOR-VIEW B-NIGHT-VO4-WIPO1 (NO CAR)
C.SELLARS JUNE 28/17

AVALANCHE ROAD HOUSE

WELCOME TO
MARWEN



THE AVALANCHE - VIEW A - VOI-WIPO2
C. SELLARS JUNE 22/17

AVALANCHE ROAD HOUSE

WELCOME TO
MARWEN



ULSTER COUNTY COURTHOUSE

WELCOME TO
MARWEN



PHOTO: STEVE STARKEY

WELCOME TO
MARWEN



PHOTO: STEVE STARKEY

WELCOME TO
MARWEN



PHOTO: STEVE STARKEY

WELCOME TO
MARWEN



PHOTO: STEVE STARKEY

WELCOME TO
MARWEN



PHOTO: STEVE STARKEY

WELCOME TO
MARWEN



PHOTO: STEVE STARKEY

WELCOME TO
MARWEN



IN APPRECIATION AND GRATITUDE TO
ROBERT ZEMECKIS
&
MARK HOGANCAMP