

**PRODUCTION DESIGNER: GILES MASTERS**



**9-1-1 SEASON 3 - EP. 2**  
**SINK OR SWIM**



**FLOODED SANTA MONICA STREET  
BUILT AND FILMED AT BAJA STUDIOS, MEXICO**



**CONCEPT SKETCH IN PHOTOSHOP BY GILES MASTERS  
OF TSUNAMI AFTERMATH**

STILL FROM EPISODE



CONCEPT SKETCH IN PHOTOSHOP BY GILES MASTERS



STILL FROM EPISODE



CONCEPT SKETCH IN PHOTOSHOP BY GILES MASTERS



**ELEVATION A**

**ELEVATION B**

**ELEVATION C**

**LAYOUT BY DOUG BERKELEY**

EXECUTIVE PRODUCERS: RYAN MURPHY | BRAD FALCON | 2018-2021 | BAJA STUDIOS  
 PRODUCED BY: RYAN MURPHY | ART DIRECTOR: BRAD FALCON | SET DESIGNER: JAMES CLARKE  
 3  
 MR. CHANNEL SETUP ACS | MR. BERKELEY | PAGE 3 OF 17  
 101 TILMAN CHANNEL-SH. BLVD | PHASE 07 302 | 949.274.3014  
 10000 BAJA STUDIOS PARK

**9-1-1**  
STUDIO CITY



**BAJA STUDIOS: SANTA MONICA STREETS BUILD PROCESS**



SKETCH IN PHOTOSHOP

CONCEPT SKETCH OF SANTA MONICA  
PIER SIGN WITH FLOODED FERRIS  
WHEEL BEHIND BY GILES MASTERS



SHOT IN MEXICO TANK 08/13/19

STILL FROM EPISODE OF SANTA MONICA  
PIER WITH FLOODED FERRIS WHEEL

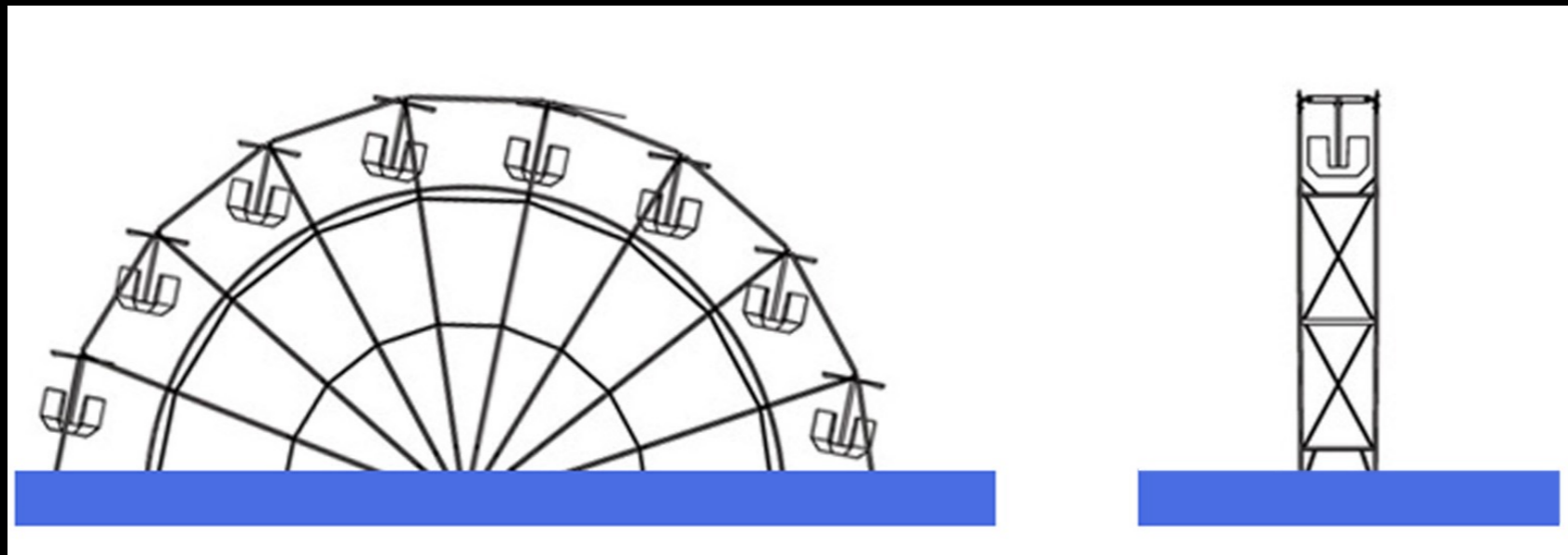


**CONCEPT SKETCH IN PHOTOSHOP  
OF FLOODED FERRIS WHEEL  
BY GILES MASTERS**



**STILL FROM EPISODE  
OF FLOODED FERRIS WHEEL**

Evens ARE YELLOW  
ODDS ARE RED



FERRIS WHEEL  
CONCEPT/PLAN





**CONCEPT IN PHOTOSHOP - OCEAN  
RECEDES BEFORE THE WAVE HITS  
BY GILES MASTERS**



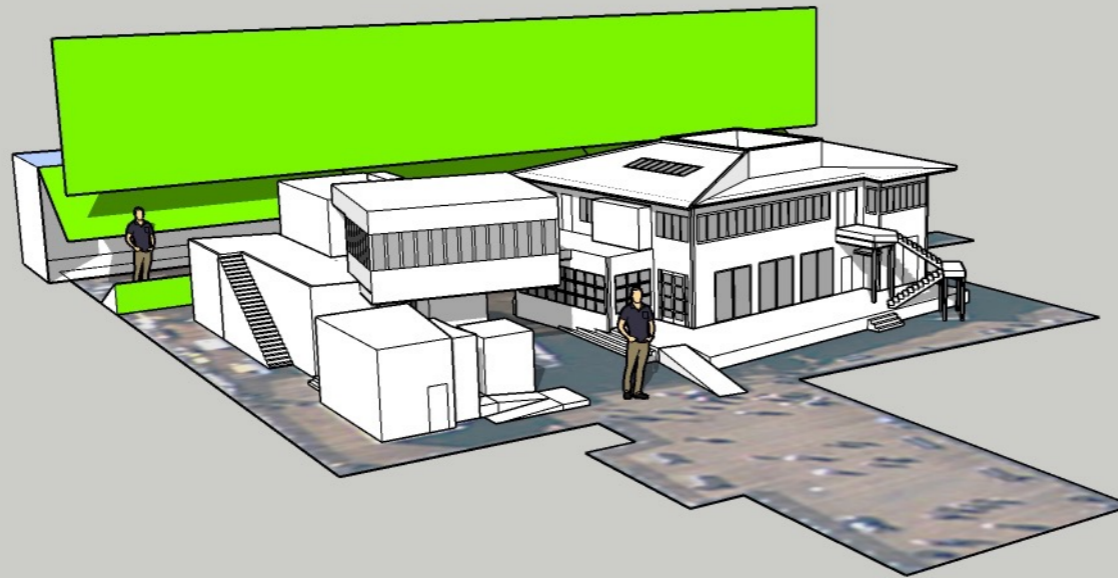
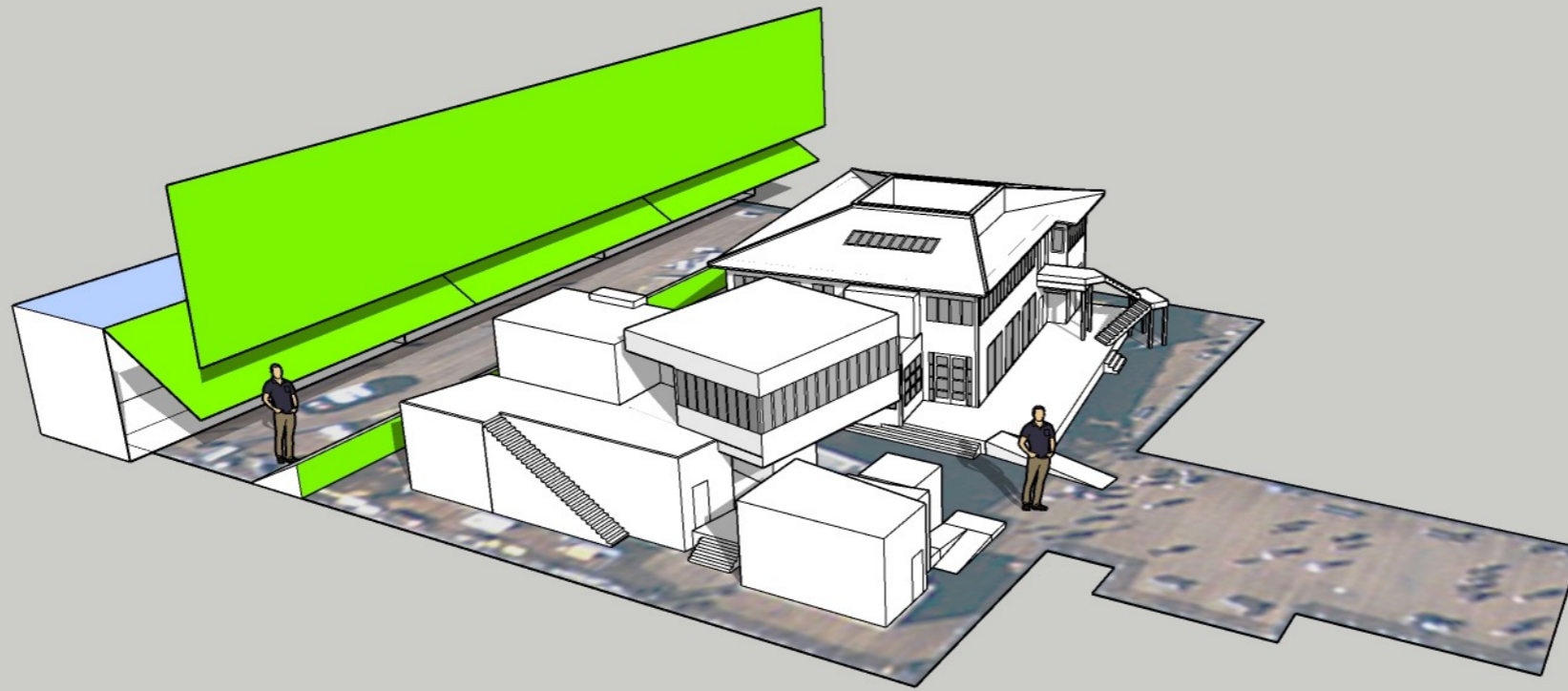
**STILL FROM EPISODE - OCEAN  
RECEDES BEFORE THE WAVE HITS**



CONCEPT IN PHOTOSHOP  
OF WAVE HITTING THE PIER  
BY GILES MASTERS



COMPOSITE MINIATURE/VFX SHOT  
OF WAVE HIT



**SKETCH UP MODEL OF 1/3 SCALE  
SANTA MONICA PIER MINIATURE  
BY DOUG BERKELEY**



**1/3 SCALE MINIATURE  
OF SANTA MONICA PIER  
FILMED AT GILIBRAND**





CONCEPT SKETCH IN PHOTOSHOP  
OF FLOODING ATTIC CRAWL SPACE  
BY GILES MASTERS



STILL FROM EPISODE  
OF ATTIC CRAWL SPACE



**ATTIC CRAWL SPACE  
BUILT AND FILMED IN ACTON TANK**





**MULTI- CAR PILE UP CONCEPT SKETCH  
IN PHOTOSHOP BY GILES MASTERS**



**STILL FROM EPISODE OF  
MULTI- CAR PILE UP**

**PRODUCTION DESIGNER: GILES MASTERS**

**ART DIRECTOR (U.S.): BRIAN JEWELL**

**ART DIRECTOR (MEXICO): JAY AROESTY**

**SET DECORATOR (U.S.): SINEAD CLANCY**

**SET DECORATOR (MEXICO): JORGE BARBA**

**ASSISTANT ART DIRECTOR (U.S.): JEANINE RINGER**

**ASSISTANT ART DIRECTOR (MEXICO): MARIA KATHERINA RIVERO**

**SET DESIGNER (U.S.): DOUG BERKELEY**

**GRAPHIC DESIGNER (U.S.): STEVEN SAMANEN**

**GRAPHIC DESIGNER (MEXICO): JOSUE PALOS**