

For Contemporary Feature Film Consideration

Production Designer

Ruth de Jong

Art Director

Cara Brower

Set Decorator

Florencia Martin

Set Designer

Jim Hewitt

Graphic Designer

Joel Waldrep

Illustrator

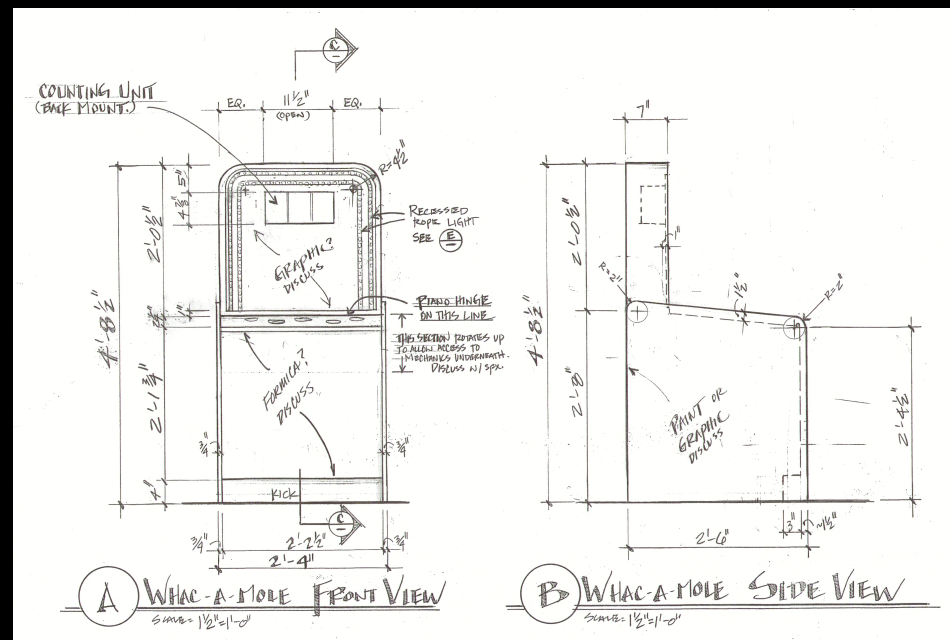
Gloria Shih

Jordan Peele's

Us







^ Food and Beach Kiosks



^^ Prize Center
^ Bottle Pyramid



^ Whac-a-Mole Design + Build

Young Adelaide and her parents stroll through the...
Santa Cruz Boardwalk
1987

Young Adelaide strays from her parents and enters Vision Quest - 1987

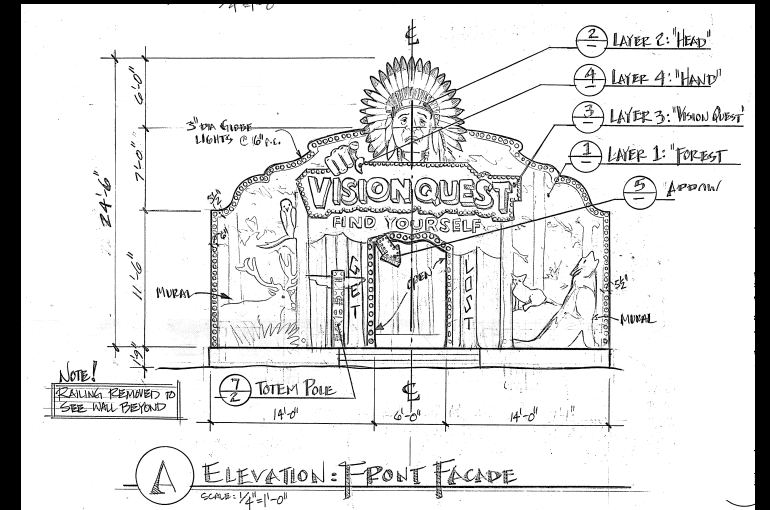
Concept Sketch



Illustration



Construction Drawing



Film Still



Inside the Hall of Mirrors

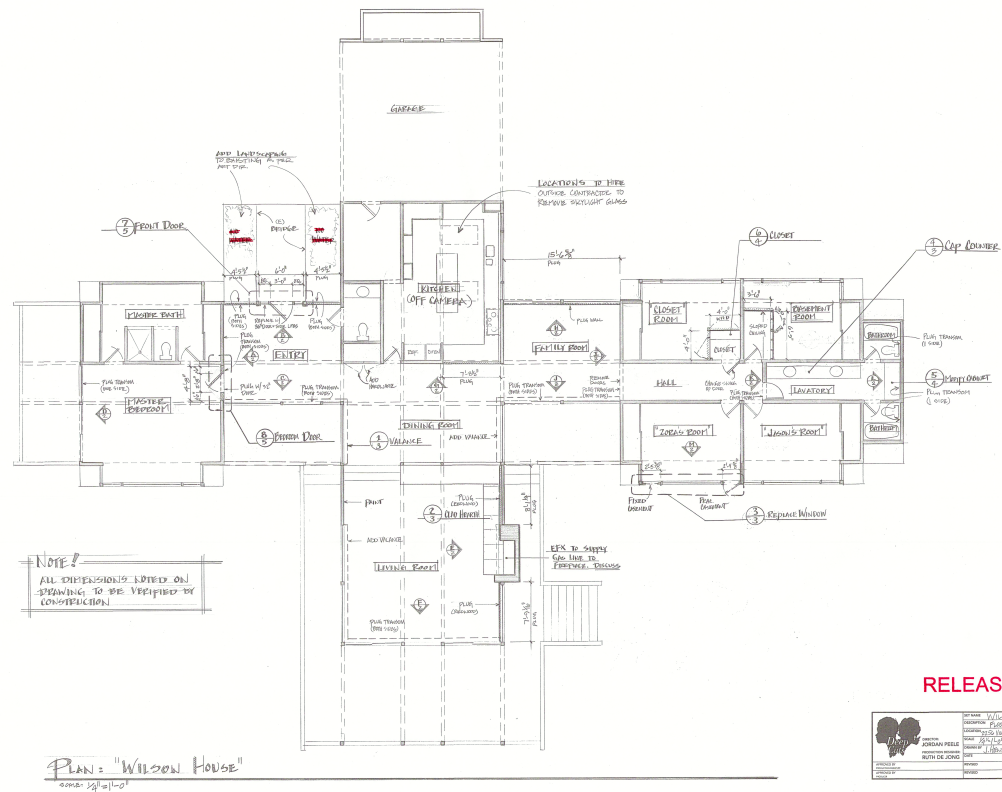


Santa Cruz Beach

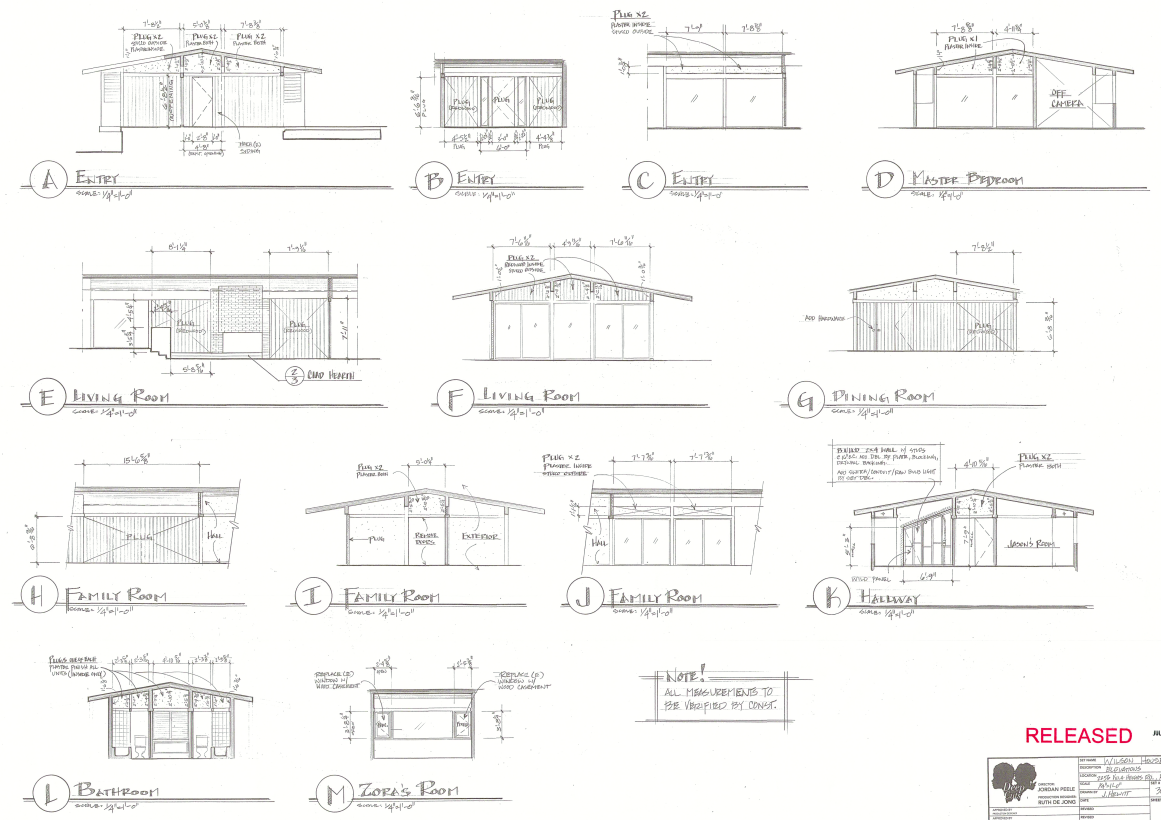




Wilson House



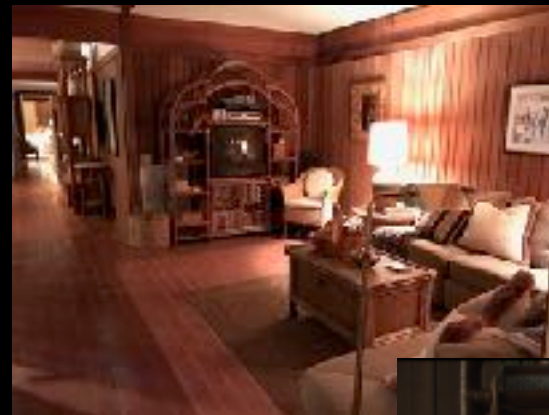
Plan



Elevations



Exterior



Sitting Room



Wilson House

Living Room >



Living Room >



Living Room >

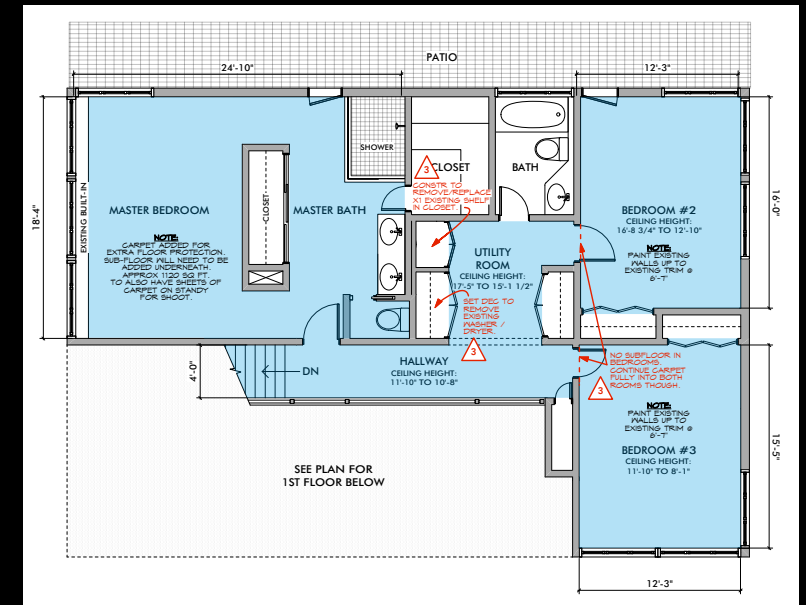
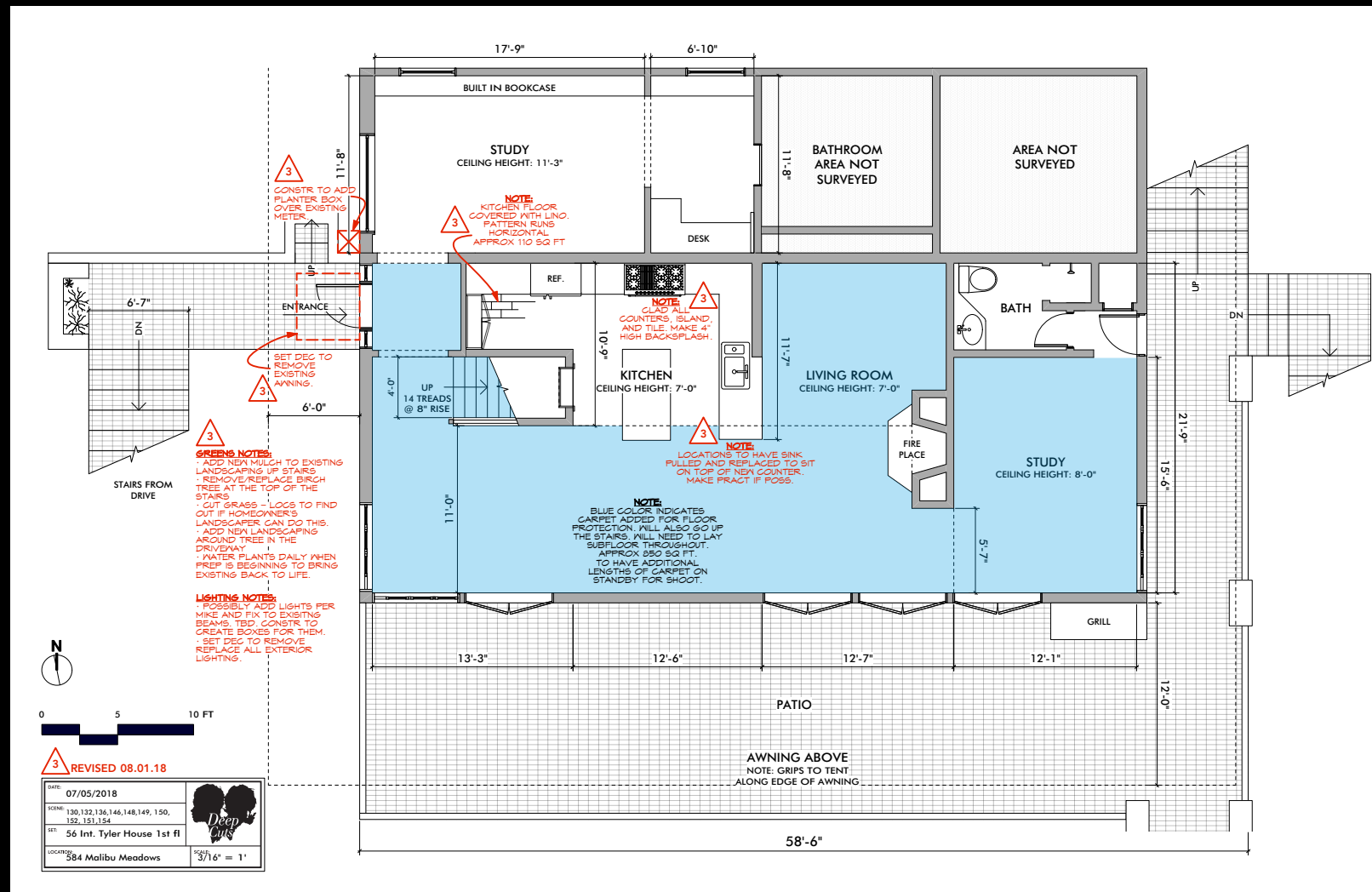


Dining Room >





Tyler House



^ Interior



^ Exterior



Tyler House



The Chase



Wilson Dock	Roadblock
Tyler Boat	It's a Trap

Back on the Santa Cruz
Boardwalk



^ Film Still
< On Location

∨ Graphics



Concept Illustration



Illustration Progress



Built on Location



On Set



On Set

Adelaide returns to the maze, now called Merlin's Forest, to rescue Jason



...Descending

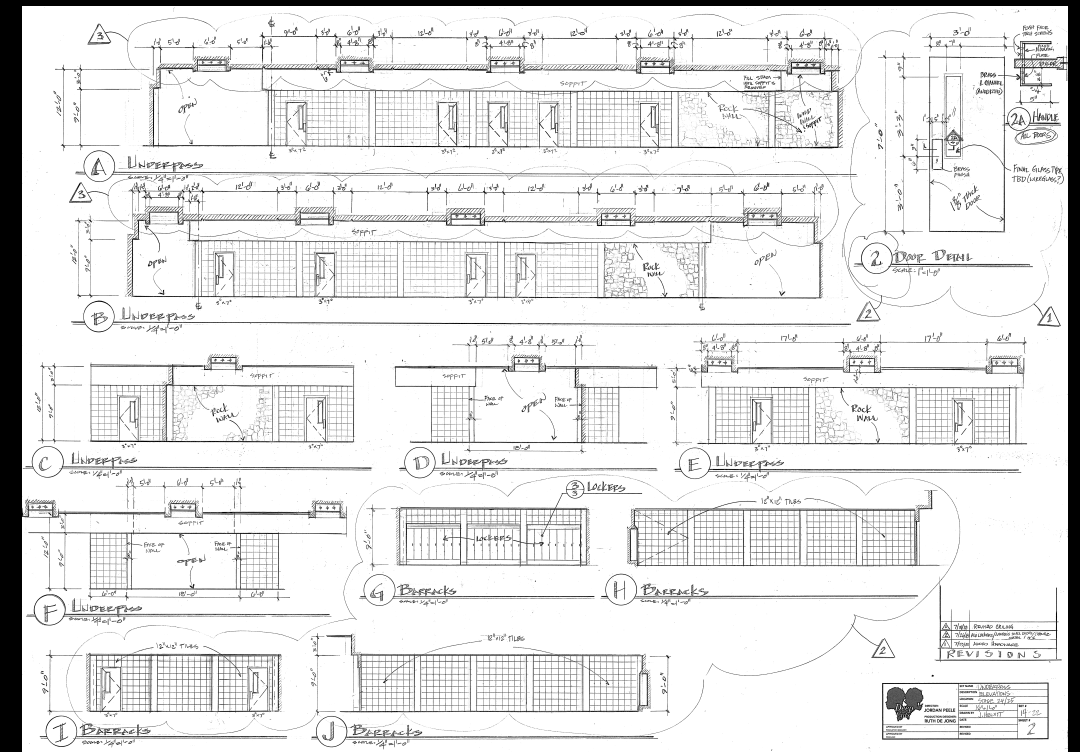
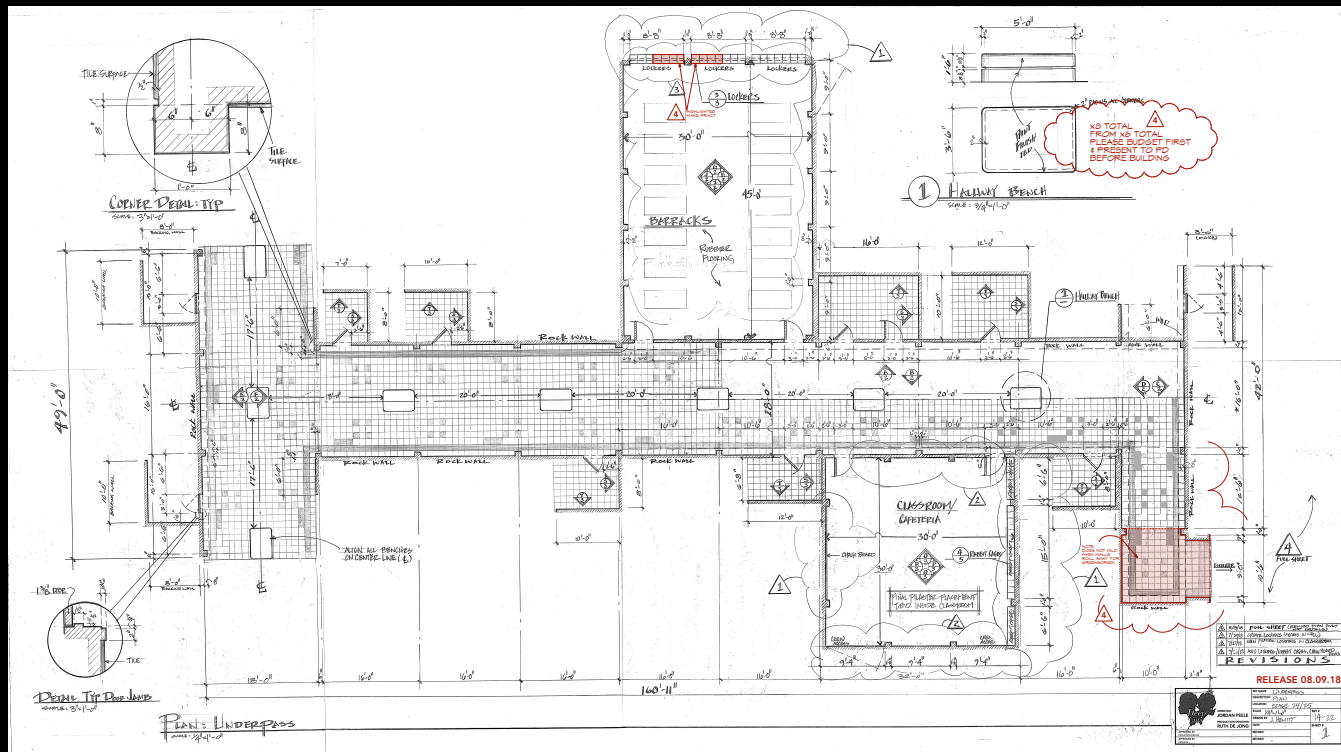


^ Mechanical Rooms



The Escalator ^





Set Drawings

Set Drawings



Illustration

Build

On Set

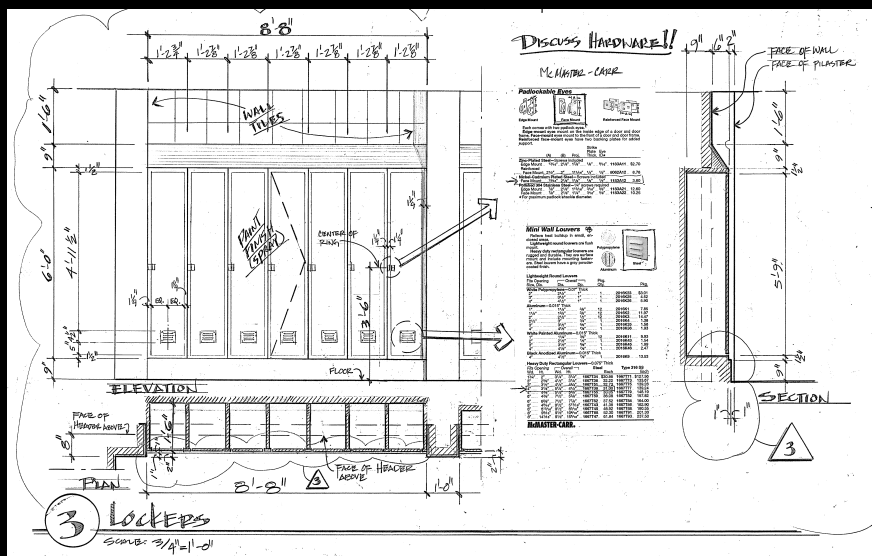


On Set

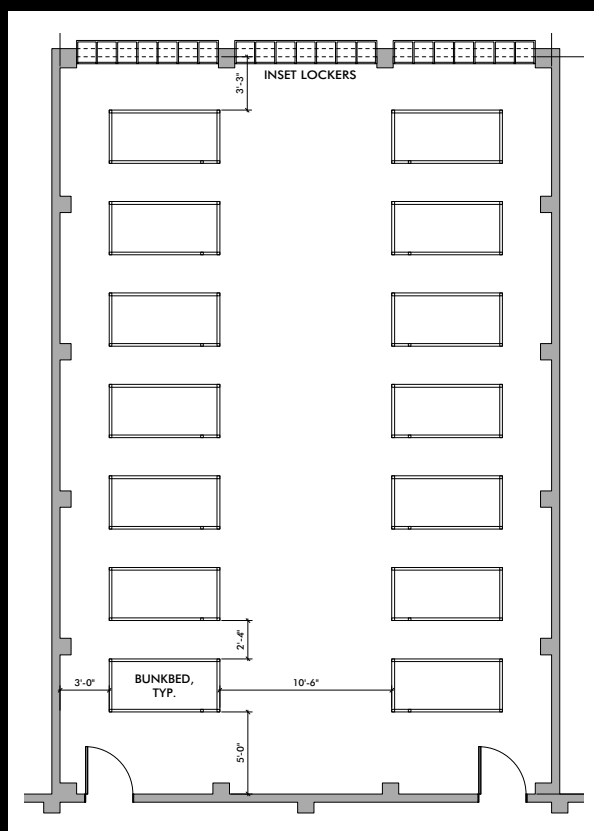
Film Still

Underpass
Hallway



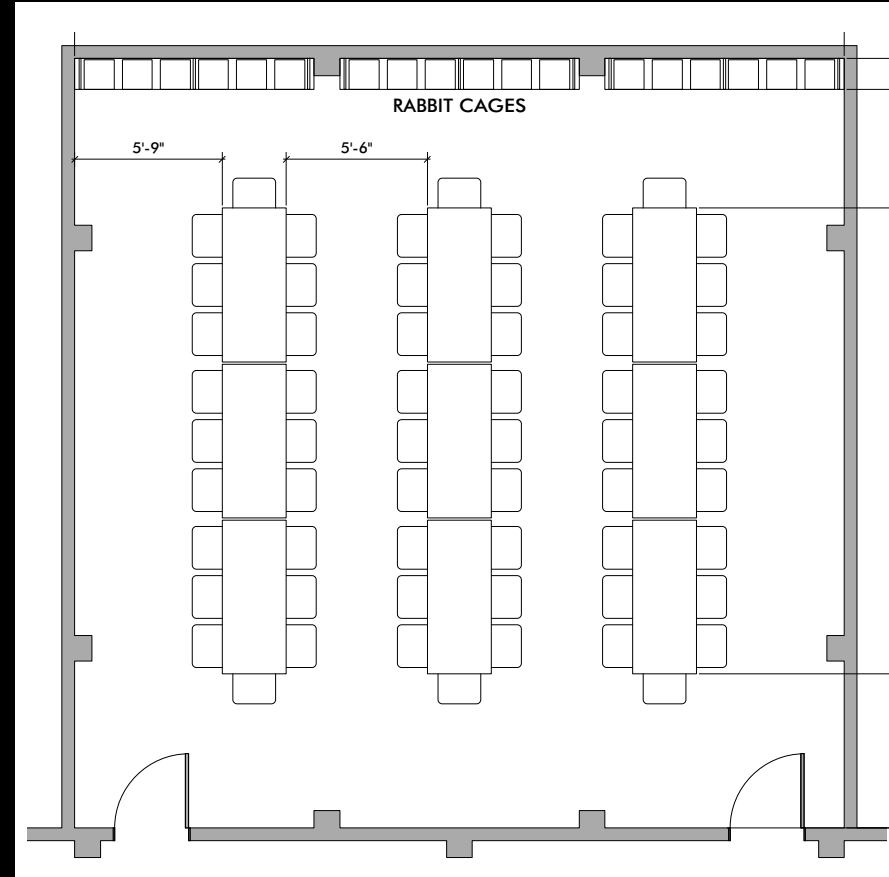


Barracks Lockers ^
 Illustration 7
 On Set >
 Plan v



Underpass - Barracks





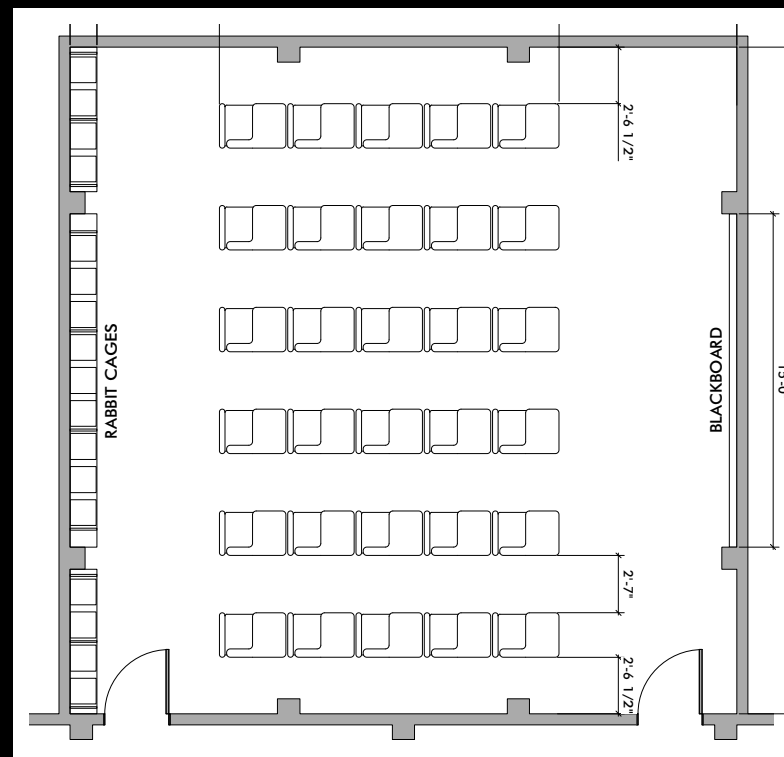
- << On Set
- < Plan
- < Film Still



Underpass - Cafeteria



Underpass - Classroom



Escape &



“Hands Across America”

