



THE IRISHMAN

LAURA BALLINGER GARDNER
SUPERVISING ART DIRECTOR

BOB SHAW
PRODUCTION DESIGNER

REGINA GRAVES
SET DECORATOR

Martin Scorsese's instructions were that *The Irishman* should look more or less like nothing. Not like nothing that had ever been seen before... just nothing. Of course what he meant was that it should reflect ordinary every day life. The 295 stage sets and locations on the show added up to quite a bit of nothing. Being a period film, achieving this often involved major transformations of locations and small closely observed details on our stage sets. The art department motto became:

**“WE GO TO EXTRAORDINARY LENGTHS TO
BRING YOU THE ORDINARY”**



VILLA Di ROMA *before*



VILLA Di ROMA *concept sketch*



VILLA Di ROMA *concept sketch*



VILLA Di ROMA *concept sketch*



VILLA Di ROMA *set still*



VILLA Di ROMA *set still*



FRIENDLY LOUNGE *before*



FRIENDLY LOUNGE *concept sketch*



RELEASED
07/07/17

05



STUCKEY'S REST STOP *before*



STUCKEY'S REST STOP *concept sketch*



HOWARD JOHNSON'S POOL *before*



HOWARD JOHNSON'S POOL *concept sketch*



HOWARD JOHNSON'S POOL *set still*



HOWARD JOHNSON'S *before*



HOWARD JOHNSON'S *concept sketch*



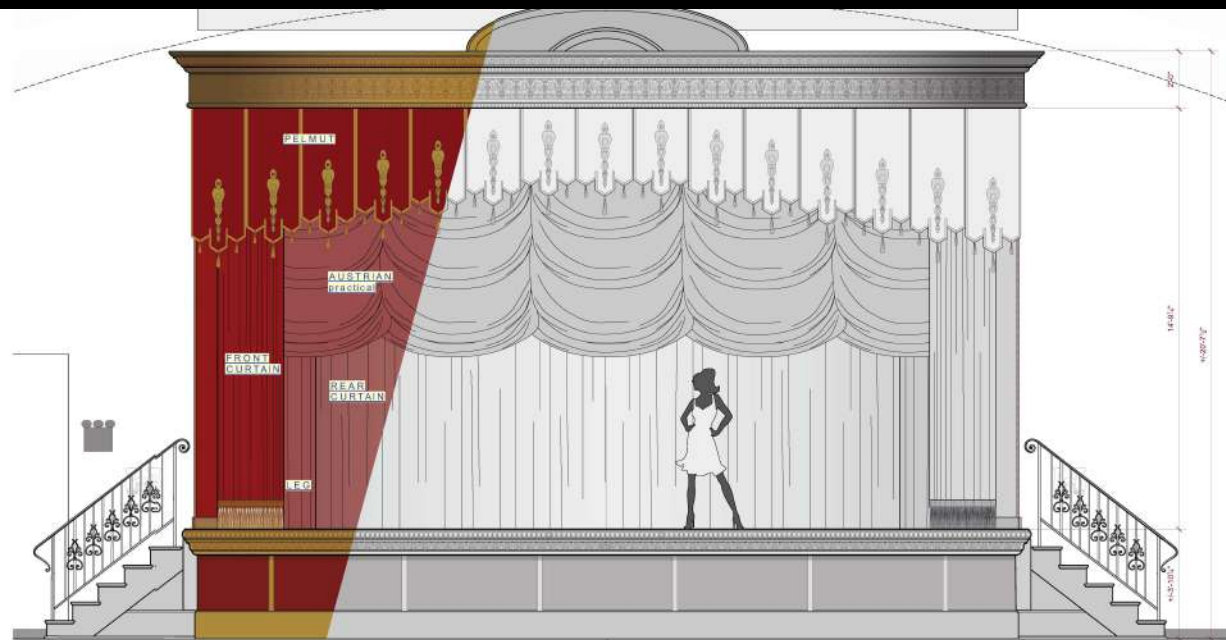
HOWARD JOHNSON'S *set still*



LATIN CASINO *before*

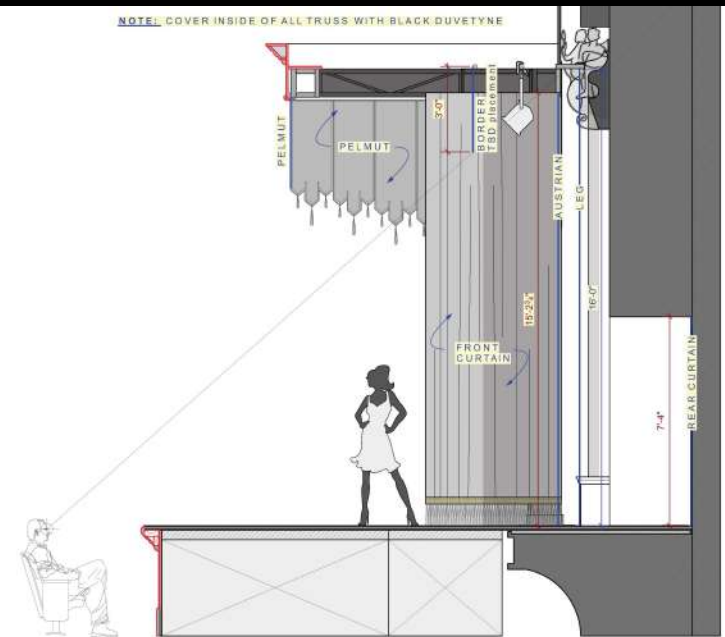


LATIN CASINO *set still*

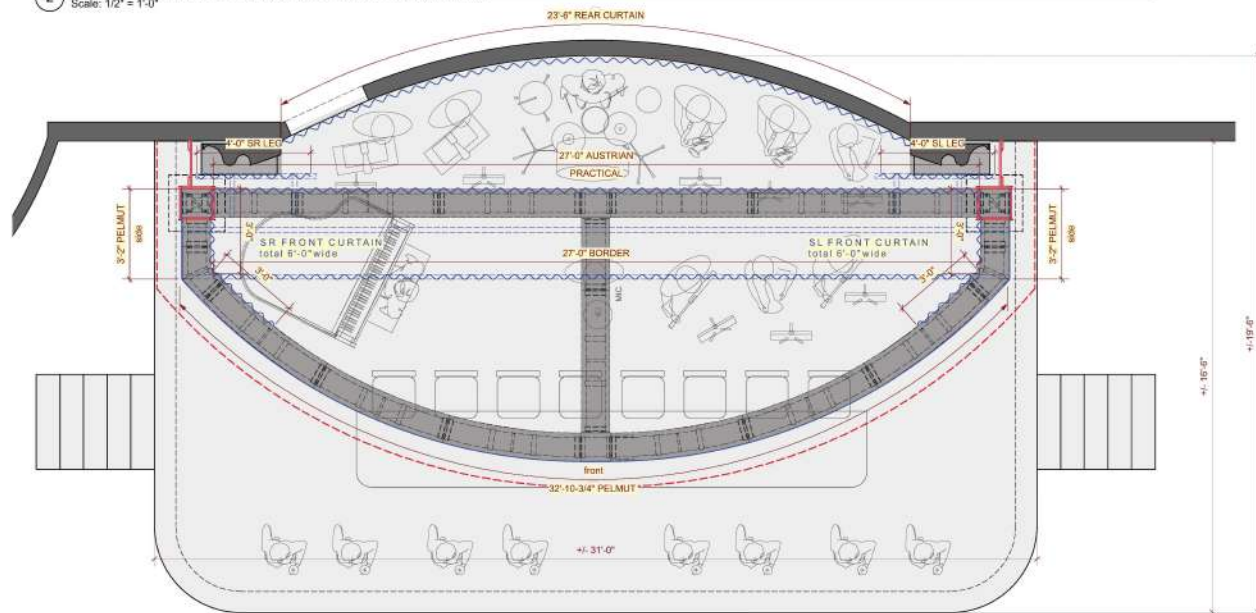


2 FRONT ELEVATION - LATIN CASINO STAGE - showing curtains
Scale: 1/2" = 1'-0"

NOTE: COVER INSIDE OF ALL TRUSS WITH BLACK DUVETENE



3 SECTION - LATIN CASINO STAGE - showing curtains
Scale: 1/2" = 1'-0"



4 PLAN - LATIN CASINO STAGE - showing curtains
Scale: 1/2" = 1'-0"

FABRIC SCHEDULE

NAME	SIZE	FABRIC	FULLNESS	STAGE	WINDOWS	NOTES
PELMUT	VARIES	CONCENTRIC HOLDUP WITH APPLIQUE	NONE	X		APPLIQUE PER SET DEC
BORDER	27'-0" WIDE	CONCENTRIC HOLDUP	100%	X		ALSO 18" AT TOP
AUSTRIAN	27'-0" WIDE	CONCENTRIC HOLDUP	N/A	X		PRACTICAL UP TOP
SL FRONT CURTAIN	6'-0" WIDE	CONCENTRIC HOLDUP WITH PRINCE	100%	X		1ST PRINCE AT BOTTOM
SL REAR CURTAIN	6'-0" WIDE	CONCENTRIC HOLDUP WITH PRINCE	100%	X		1ST PRINCE AT BOTTOM
SL LEG	4'-0" WIDE	CONCENTRIC HOLDUP	100%	X		VERANDA AND OPERABLES AT TOP
SL LEG	4'-0" WIDE	CONCENTRIC HOLDUP	100%	X		VERANDA AND OPERABLES AT TOP
VERANDA	VARIES	CONCENTRIC HOLDUP WITH APPLIQUE	NONE		X	APPLIQUE PER SET DEC
VERANDA	VARIES	CONCENTRIC HOLDUP WITH APPLIQUE	NONE		X	APPLIQUE PER SET DEC

09-22-2017
RELEASED

RELEASE DATE:

THE IRISHMAN

STAGE PLANS SHOWING CURTAINS

STAGE PLANS SHOWING CURTAINS

STAGE PLANS SHOWING CURTAINS

STAGE PLANS SHOWING CURTAINS

STAGE PLANS SHOWING CURTAINS

STAGE PLANS SHOWING CURTAINS

STAGE PLANS SHOWING CURTAINS

STAGE PLANS SHOWING CURTAINS

STAGE PLANS SHOWING CURTAINS

STAGE PLANS SHOWING CURTAINS

STAGE PLANS SHOWING CURTAINS

STAGE PLANS SHOWING CURTAINS

STAGE PLANS SHOWING CURTAINS

STAGE PLANS SHOWING CURTAINS

STAGE PLANS SHOWING CURTAINS

STAGE PLANS SHOWING CURTAINS

STAGE PLANS SHOWING CURTAINS

STAGE PLANS SHOWING CURTAINS

STAGE PLANS SHOWING CURTAINS

STAGE PLANS SHOWING CURTAINS

STAGE PLANS SHOWING CURTAINS

STAGE PLANS SHOWING CURTAINS

STAGE PLANS SHOWING CURTAINS

STAGE PLANS SHOWING CURTAINS

STAGE PLANS SHOWING CURTAINS

STAGE PLANS SHOWING CURTAINS

STAGE PLANS SHOWING CURTAINS

STAGE PLANS SHOWING CURTAINS

STAGE PLANS SHOWING CURTAINS

STAGE PLANS SHOWING CURTAINS

STAGE PLANS SHOWING CURTAINS

STAGE PLANS SHOWING CURTAINS

STAGE PLANS SHOWING CURTAINS

STAGE PLANS SHOWING CURTAINS

STAGE PLANS SHOWING CURTAINS

LATIN CASINO working drawing



FOOD FAIR *before*



FOOD FAIR *concept sketch*

311 - EXT. FOOD FAIR - SIGNAGE/GRAPHICS

FULL SIZE POUNCE TO BE PROVIDED BY GRAPHICS FOR SCENICS TO HANDPAINT LETTERING



THE IRISHMAN		SET NAME	EXT. FOOD FAIR	DATE	10/16/17	REVISIONS	PLATE NUMBER
VILLA ROMA PRODUCTIONS, LLC.		DRAWING TITLE		SET LOCATION			
DIRECTOR MARTIN SCORSESE		SIGNAGE/					
PRODUCTION DESIGNER BOB SHAW		GRAPHICS					
ART DIRECTOR LAURA BALLOTTI GARDNER							
SET DECORATOR REGINA GRAVES							
				SCALE	1/4"	DRAWN BY	HW
							G1

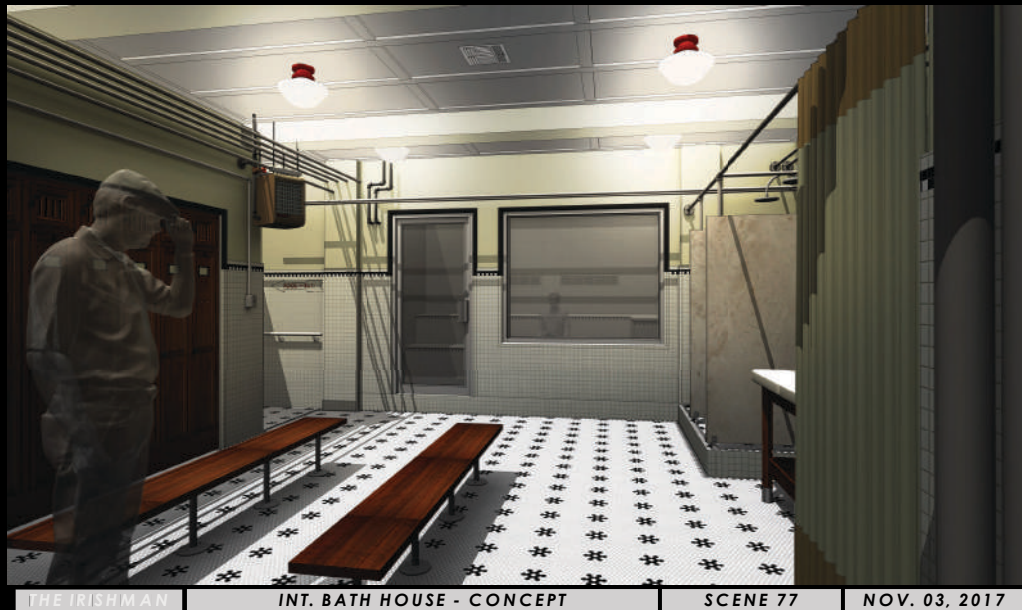
FOOD FAIR *working drawing*



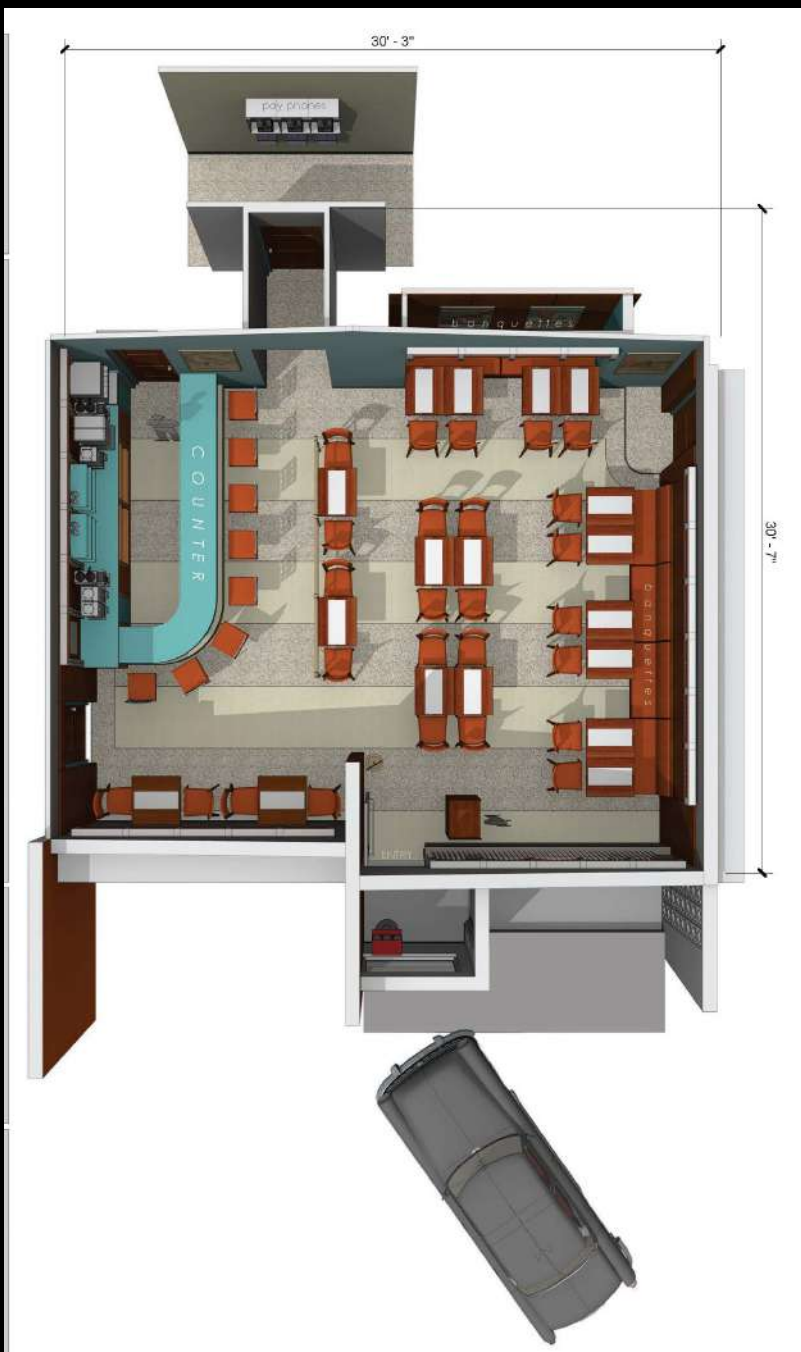
BARBER SHOP *sketch up model*



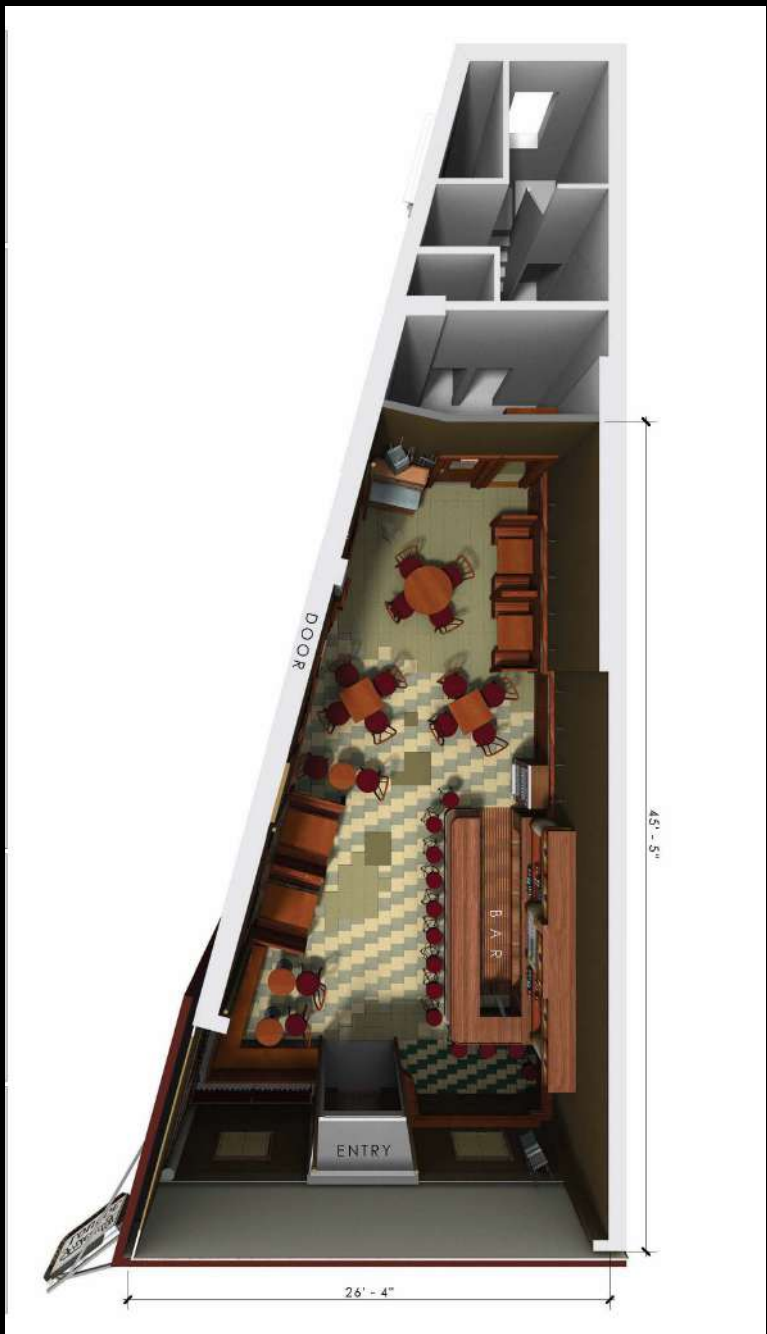
BARBER SHOP *Photo of dressed set*



STEAM ROOM *sketch up models and set photos*



HOWARD JOHNSON'S COFFEE SHOP *sketch up models*



FRIENDLY LOUNGE *sketch up models*



UMBERTO'S CLAM HOUSE *before*



UMBERTO'S CLAM HOUSE *concept sketch*

**"WE GO TO
EXTRAORDINARY
LENGTHS
TO BRING YOU
THE ORDINARY"**

**- THE IRISHMAN
ART DEPARTMENT**

ART DEPARTMENT *wrap gift*

THE IRISHMAN

ASSISTANT ART DIRECTORS

ANN BARTEK
KATYA BLUMENBERG
RYAN HECK
CHRISTOPHER MORRIS
BENJAMIN COX
LAUREN ROCKMAN
NITHYA SHRINIVASAN
ERIC BEAUZAY

GRAPHIC DESIGNERS

HOLLY WATSON
BRANDON SMITH
SEAN MURRAY
DAN-AH KIM
NICK NOBLE

ILLUSTRATOR

ERIC FEHLBERG

SCENIC ARTISTS

PATRICIA SPROTT
JAYSON MARZANO
DANA KENN