

WE COULD ALL USE A LITTLE KINDNESS



A BEAUTIFUL DAY
IN THE NEIGHBORHOOD



THIS FILM IS NOT YET RATED
FOR PARENTS MAY SEE IT
RUMORHAS.COM

A Beautiful Day Movie



IN THEATERS THANKSGIVING

PRODUCTION DESIGNER

JADE HEALY

ART DIRECTOR / DIGITAL SET DESIGNER

GREG WEIMERSKIRCH

SET DECORATOR

MERISSA LOMBARDO

SET DESIGNER

ADELE PLAUCHE

ASSISTANT ART DIRECTOR

COREY SWEAZEN

GRAPHIC DESIGNER

BRAD TOWELL

ART DEPARTMENT COORDINATOR

TERESA DONATELLI



Only a handful of set pieces survived from the PBS television series *Mister Rogers' Neighborhood*. For Mister Rogers' TV House, only the front door remained. By studying archive photos and episodes of the TV program, the set was digitally modeled and drafted. It was then built and filmed in the original television studio at WQED Pittsburgh.

MISTER ROGERS'
TV HOUSE



MISTER ROGERS'
TV HOUSE



Set dressing, including furniture, upholstery, carpet, and artwork were also reproduced.

MISTER ROGERS'
TV HOUSE



**MISTER ROGERS'
TV HOUSE**

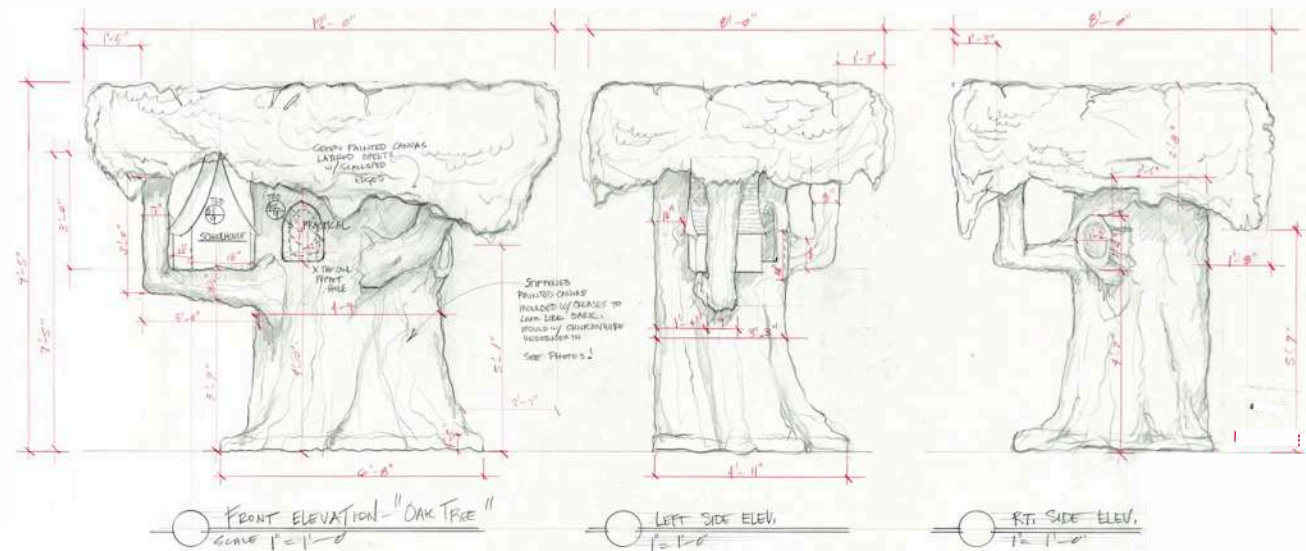


MISTER ROGERS'
TV HOUSE

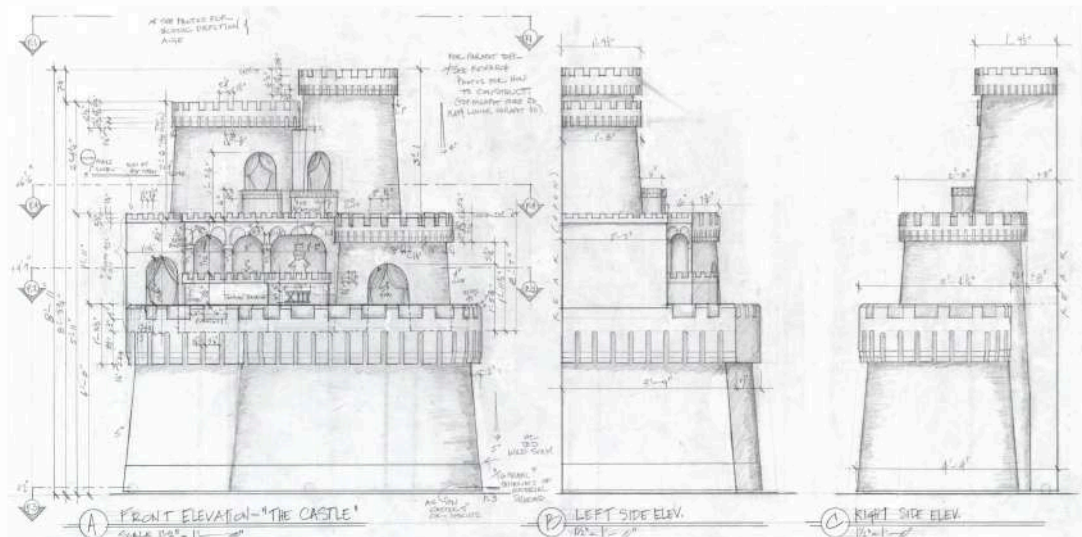


The original *King Friday's Castle* and the *X-The Owl Tree* from the TV series are housed in the Pittsburgh History Center. They were too fragile to be used in the film and were replicated. Other set pieces, such as *Daniel Striped Tiger's Clock* and the *Museum-Go-Round*, were recreated by examining archive photographs.

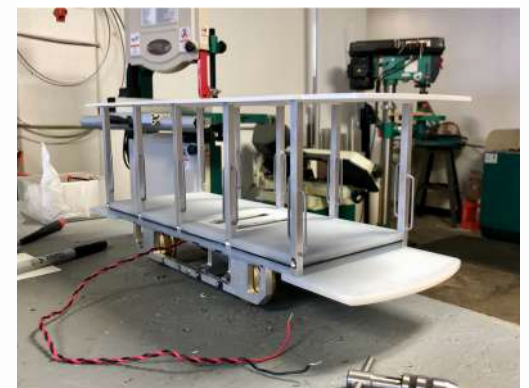
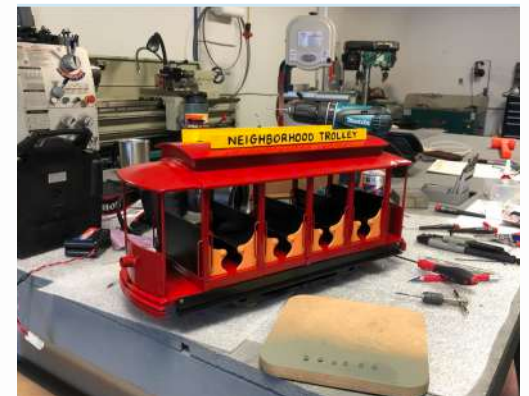
**NEIGHBORHOOD OF
MAKE-BELIEVE**



NEIGHBORHOOD OF
MAKE BELIEVE



NEIGHBORHOOD OF
MAKE BELIEVE



The *Neighborhood of Make Believe* trolley and the cast of puppets were reproduced by studying the original props.

**NEIGHBORHOOD OF
MAKE BELIEVE**



NEIGHBORHOOD OF
MAKE BELIEVE



Like the original TV program, the film utilizes a series of miniatures for scene transitions between locations. The original *Mr. Rogers' Neighborhood* model was remade, in addition to new models for Pittsburgh, Manhattan, Lloyd and Andrea's Loft, and several other key locations used in the film.

MINIATURES



Hudson Theater



Plaza Hotel



Lloyd and Andrea's Loft



George Washington Bridge

MINIATURES



LaGuardia



Lloyd's Parents House



Lloyd's Father's Grave

MINIATURES



Downtown Pittsburgh at The Point



Initial Concept Illustration

MINIATURES



Lloyd and Andrea's New York Loft was built inside a dilapidated paper warehouse. Plaster walls, tin ceilings, and wood floors were all extensively rebuilt, painted, and aged.

**LLOYD AND ANDREA'S
LOFT**



LLOYD AND ANDREA'S
LOFT



LLOYD AND ANDREA'S
LOFT



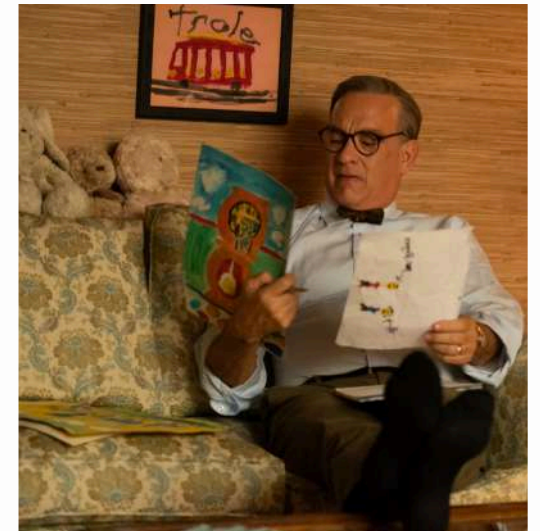
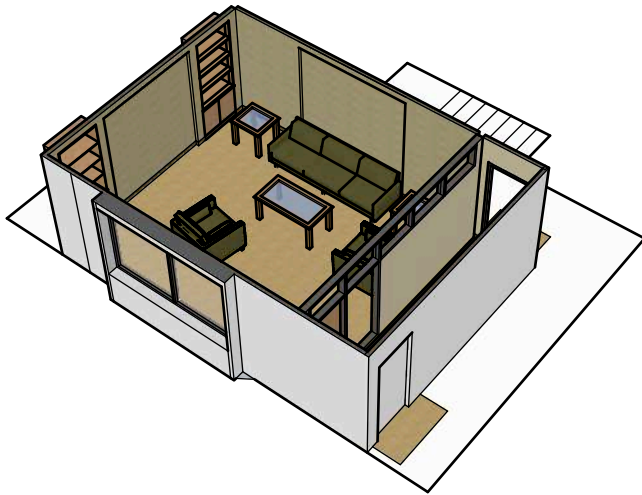
LLOYD AND ANDREA'S
LOFT



ESQUIRE MAGAZINE
OFFICE



ESQUIRE MAGAZINE
OFFICE



Fred's office no longer exists at WQED and had to be built on stage. Children's artwork, furniture, Emmy™ Awards, and fabrics were all reproduced to complete the set.

**FRED'S OFFICE
AT WQED**



FRED AND JOANN'S
HOUSE



Lloyd's Parents House was to have been renovated in the late 1970's or early 80's by his deceased mother. The filming location required new carpet, wallpaper, paint and draperies.

**LLOYD'S PARENTS
HOUSE**



**LLOYD'S PARENTS
HOUSE**



THANK YOU