



YOU SHOULD HAVE LEFT

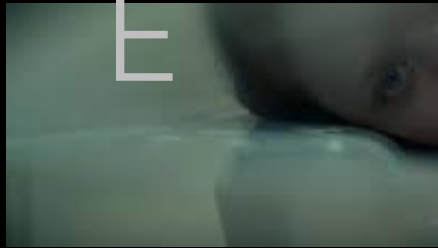
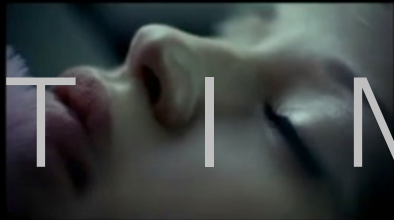
PRODUCTION DESIGN BY SOPHIE BECHER
SUPERVISING ART DIRECTOR **KIERA TUDWAY**
SET DECORATOR CLARE ANDRADE



EXT. HOUSE MOODBOARD



INTERIOR LIGHTING / TONE MOODBOARD



T I M E S H I F T S



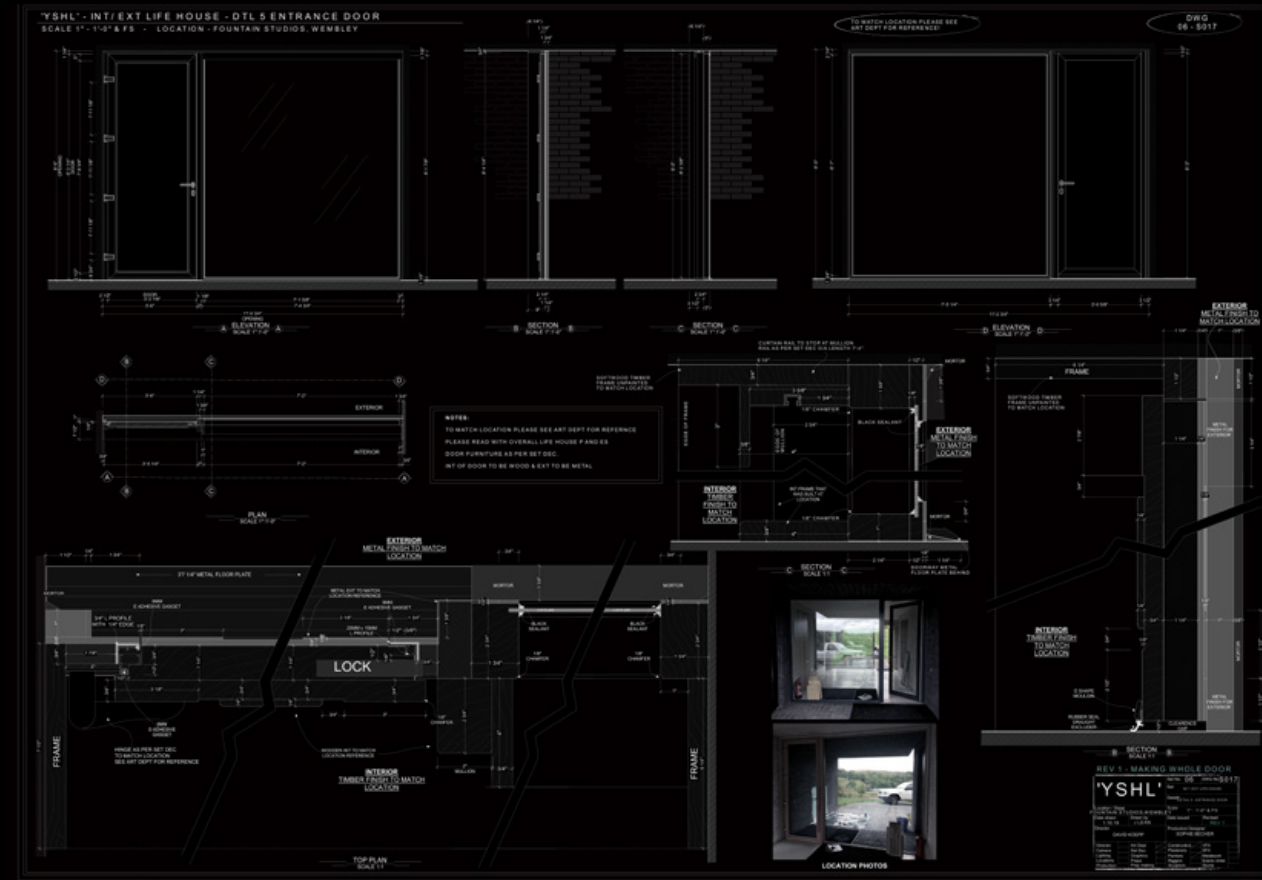
LOCATION STILL EXT. HOUSE



PHOTOSHOP OF THE HOUSE



EXT. FRONT DOOR LOCATION



DRAWING FROM INT. HALLWAY



LOCATION INT. EXT. HOUSE



STUDIO INT. EXT. DOOR

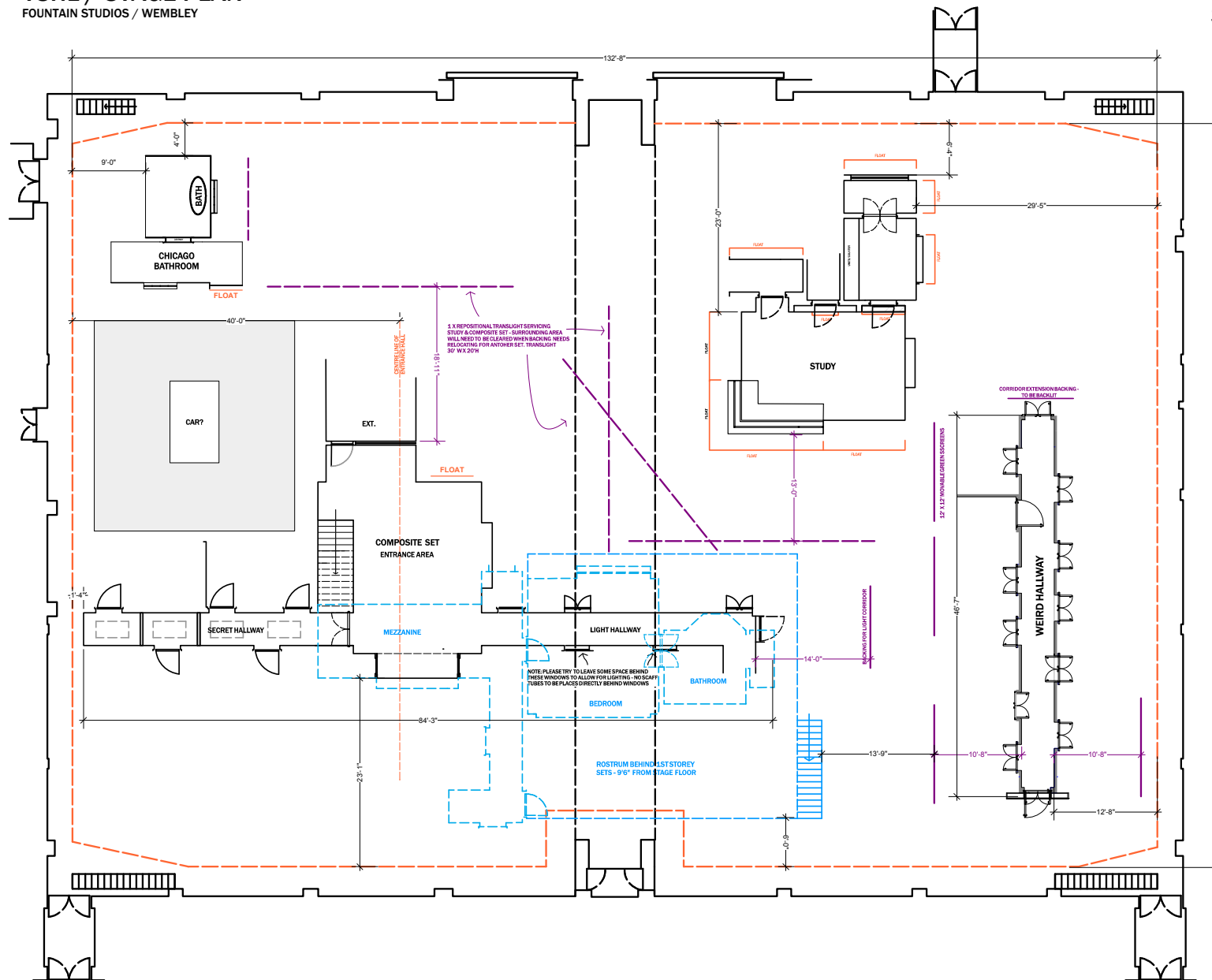
LOCATION AND STUDIO MATCH - EXT. INT. HOUSE

YSHL / STAGE PLAN

FOUNTAIN STUDIOS / WEMBLEY

DWG. NO. S_022 REV B
SCALE: 1/8" @ A2

STUDIO HEIGHT AT LOWEST POINT - 30'0"
HIGHEST POINT OF SET - 21'0"



- REV A 21.08.18 - Amended bedroom position and layout
Amended Fire lane route
Amended rostra size
- REV B 08.10.18 - Reposition of Chicago Bathroom Set
Space allocation for filming car - TBC

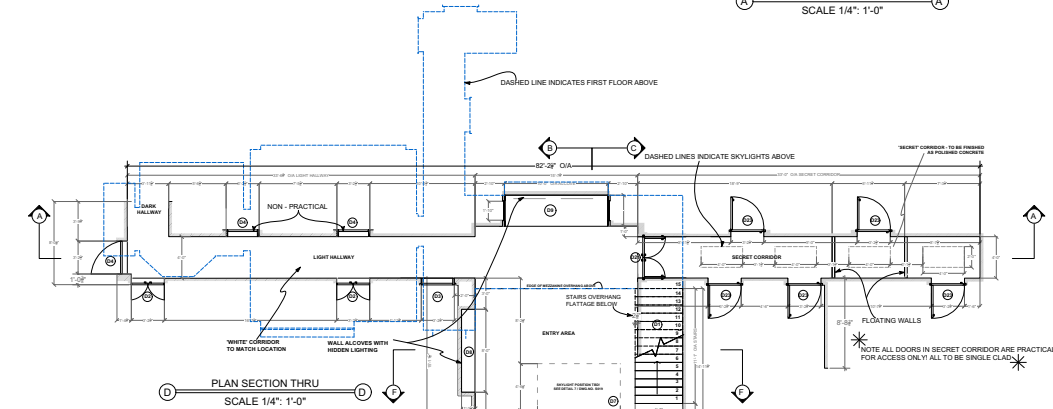
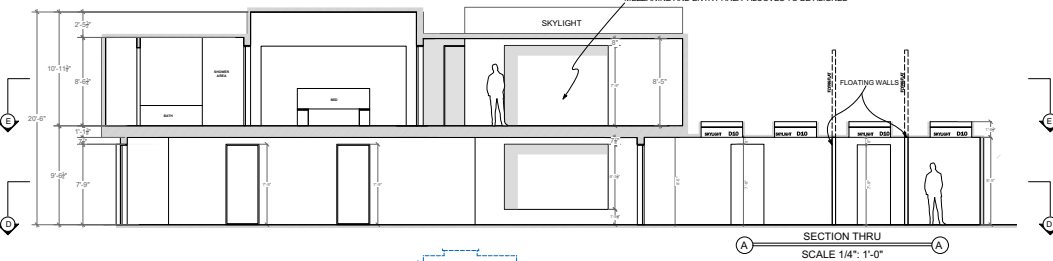
'YSHL'		Set No. MULTIPLE	DWG No. S022 - REV B
Location / Stage FOUNTAIN STUDIOS, WEMBLEY		Set INT LIFE HOUSE & CHICAGO BATHROOM	
Date drawn 14.09.18		Drawn by KJT	Details STAGE LAYOUT
Director DAVID KOEPP		Date issued 17.08.18	Scale 1/8" = 1'0"
Production Designer SOPHIE BECHER		Date revised 08.10.18	
Director	Art Dept	Construction	VFX
Camera	Set Dec	Plasterers	SFX
Lighting	Graphics	Painters	Metalwork
Locations	Props	Riggers	Scenic Artist
Production	Prop making	Scupltors	Stunts



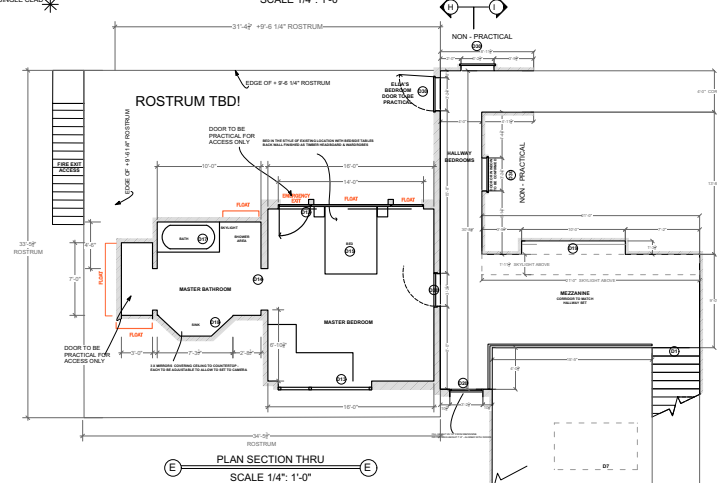
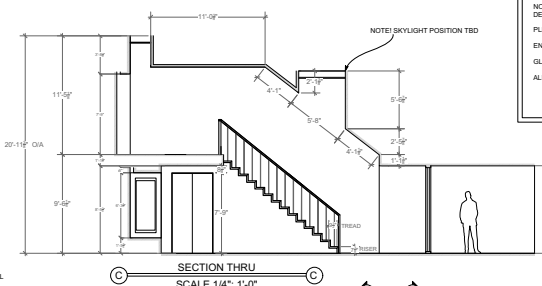
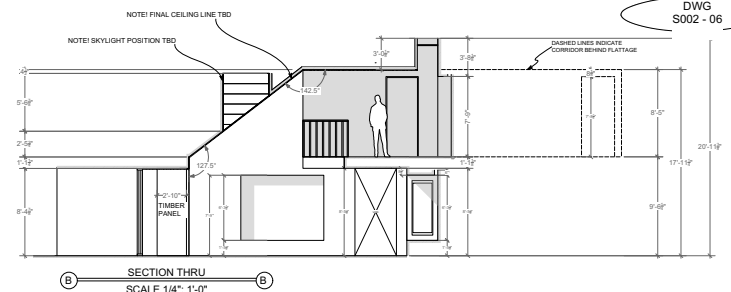
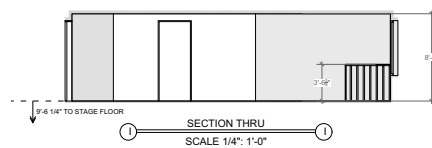
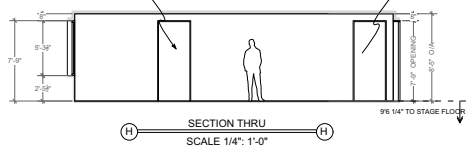
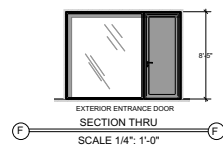
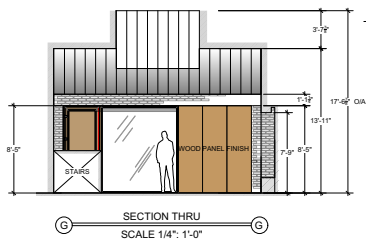
FOUNTAIN STUDIOS, WORK IN PROGRESS

'YSHL' - INT/ EXT LIFE HOUSE - PLANS AND ELEVATIONS

SCALE 1/4" = 1'-0" @ A0 - LOCATION - FOUNTAIN STUDIOS, WEMBLEY



PLAN AND SECTION A ARE ALIGNED ON SHEET!



REVISION A
- CHANGE TO DETAIL NUMBERS
- CHANGE TO ROSTRUM SIZE
- CHANGE TO BEDROOM PLAN
- CHANGE TO STAGE LAYOUT
- CHANGE TO SECRET CORRIDOR
SKYLIGHT POSITIONS

'YSHL'		Sheet No. 06	DWG No. S002
Location: FOUNTAIN STUDIOS, WEMBLEY		Scale: 1/4" = 1'-0"	Project: INT/ EXT LIFE HOUSE
Date: 21.08.18		Scale: 1/4" = 1'-0"	Project: INT/ EXT LIFE HOUSE
Director: DAVID KIDDER		Scale: 1/4" = 1'-0"	Project: INT/ EXT LIFE HOUSE
Production Designer: SOPHIE BECHER		Scale: 1/4" = 1'-0"	Project: INT/ EXT LIFE HOUSE
Director	Art Dept	Construction	VFX
Camera	Set Dec	Painters	SFX
Lighting	Costume	Props	Makeup
Location	Transport	Specials	Stunts
Production	Post-making	Production	Production

FINISHES



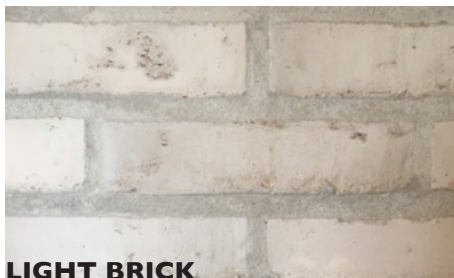
TERAZZO FLOOR



WOOD

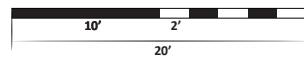
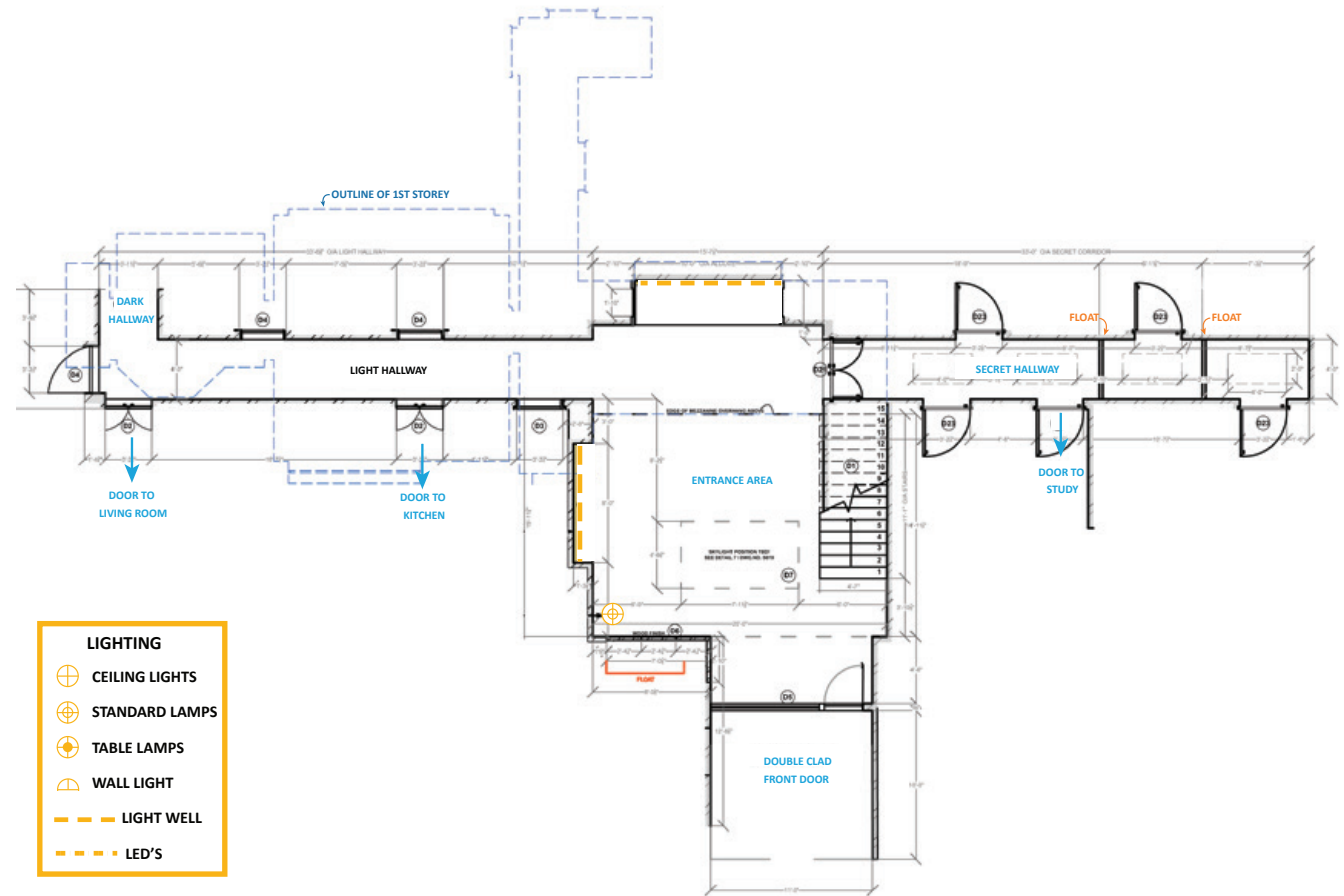


POLISHED CONCRETE



LIGHT BRICK

PLAN





ENTRANCE HALL - SET

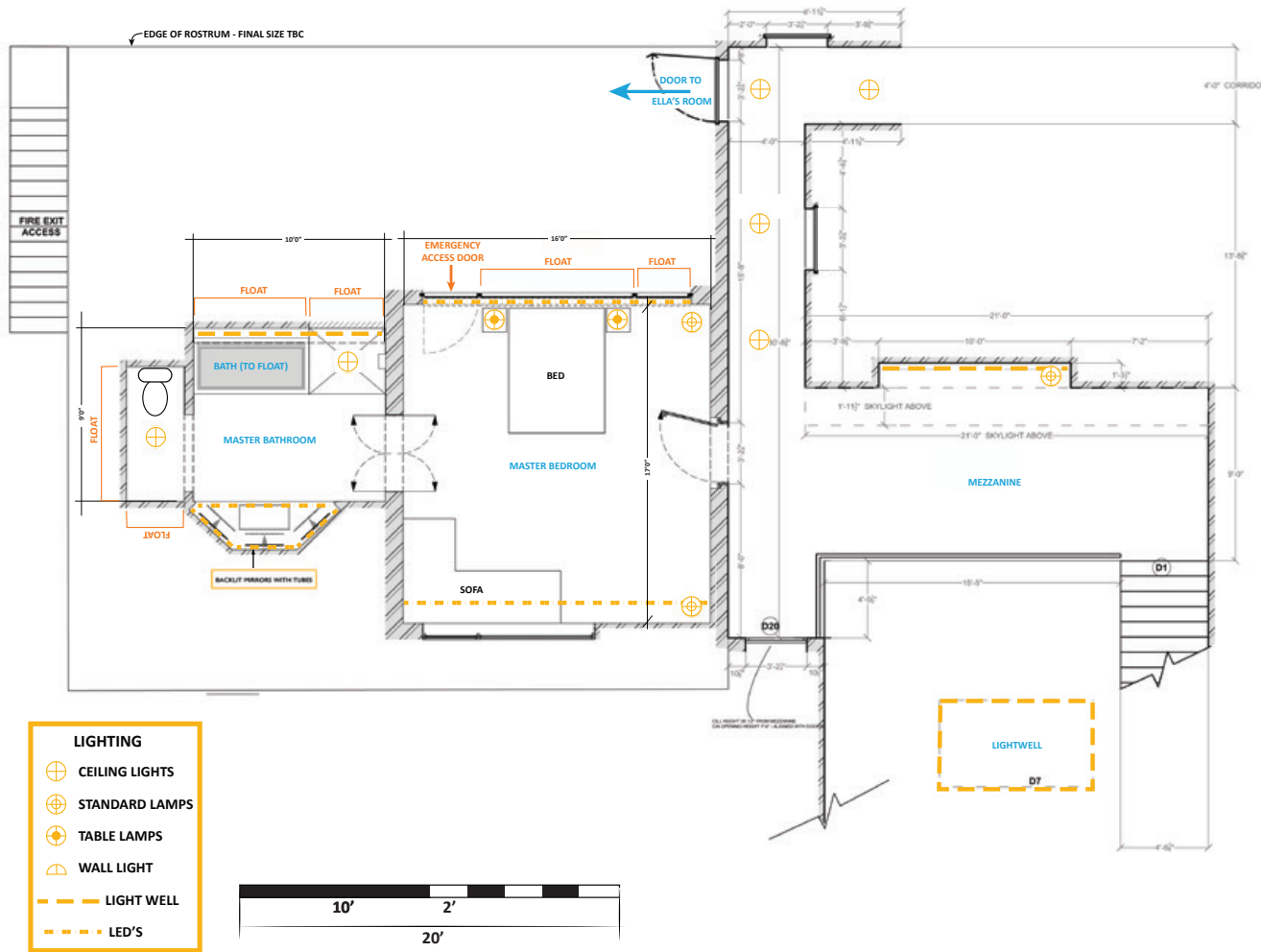


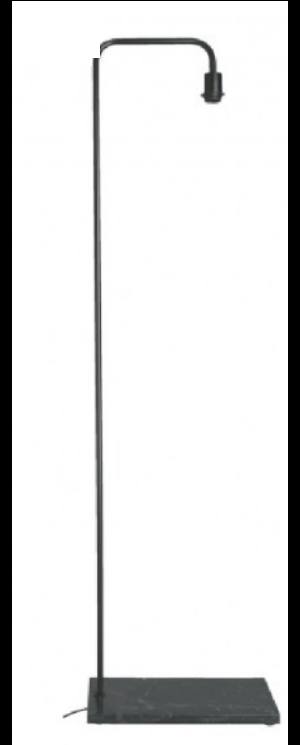
ENTRANCE HALL - SET

FINISHES



PLAN





BEDROOM PROPS BOARD



MASTER BEDROOM - SET



MASTER BEDROOM - SET



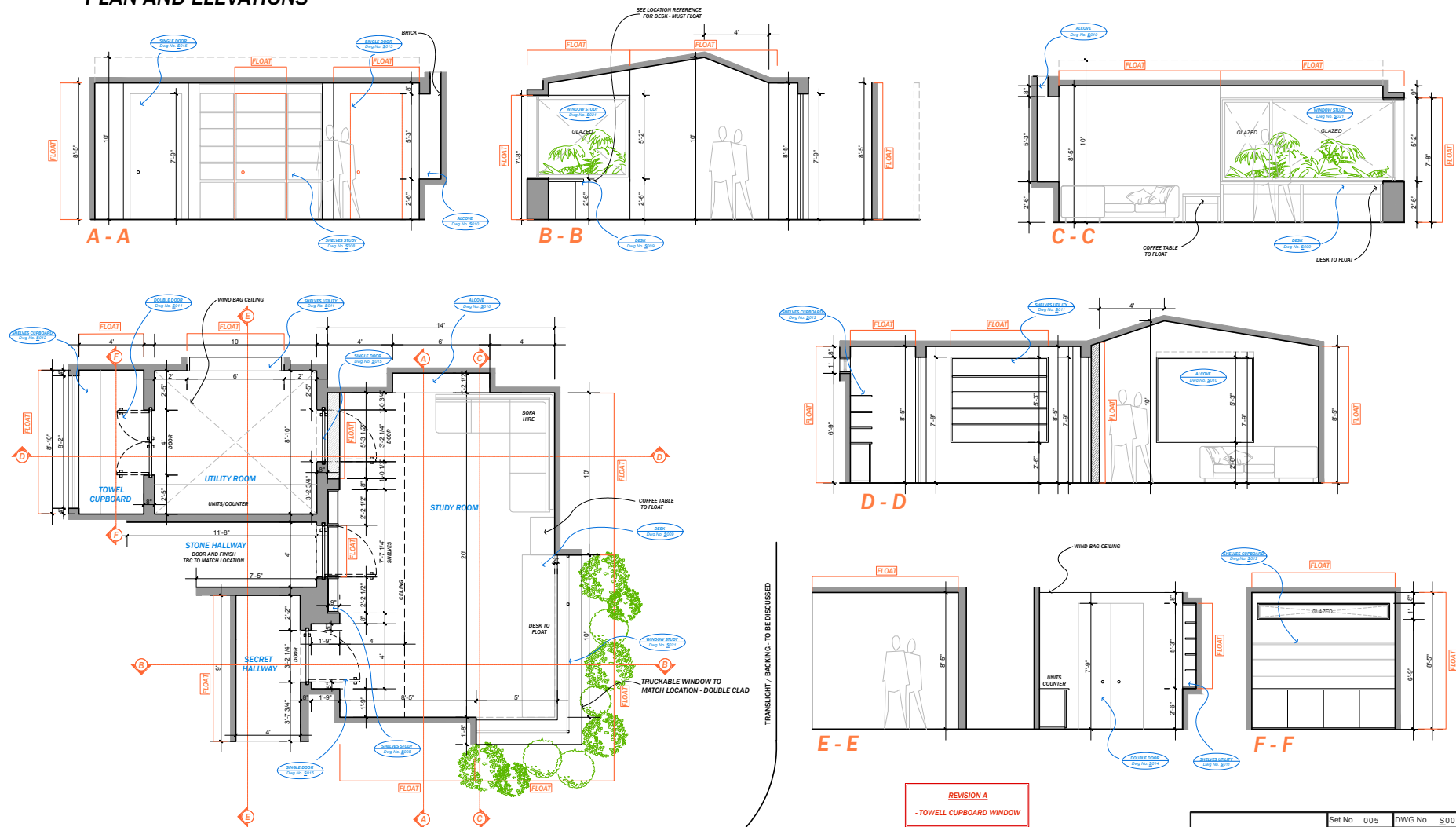
MASTER BATHROOM - SET



MASTER BATHROOM - SET STILLS

YOU SHOULD HAVE LEFT / HOUSE / STUDY ROOM PLAN AND ELEVATIONS

Dwg No. S007 @ 1/4in - 1ft



NOTES

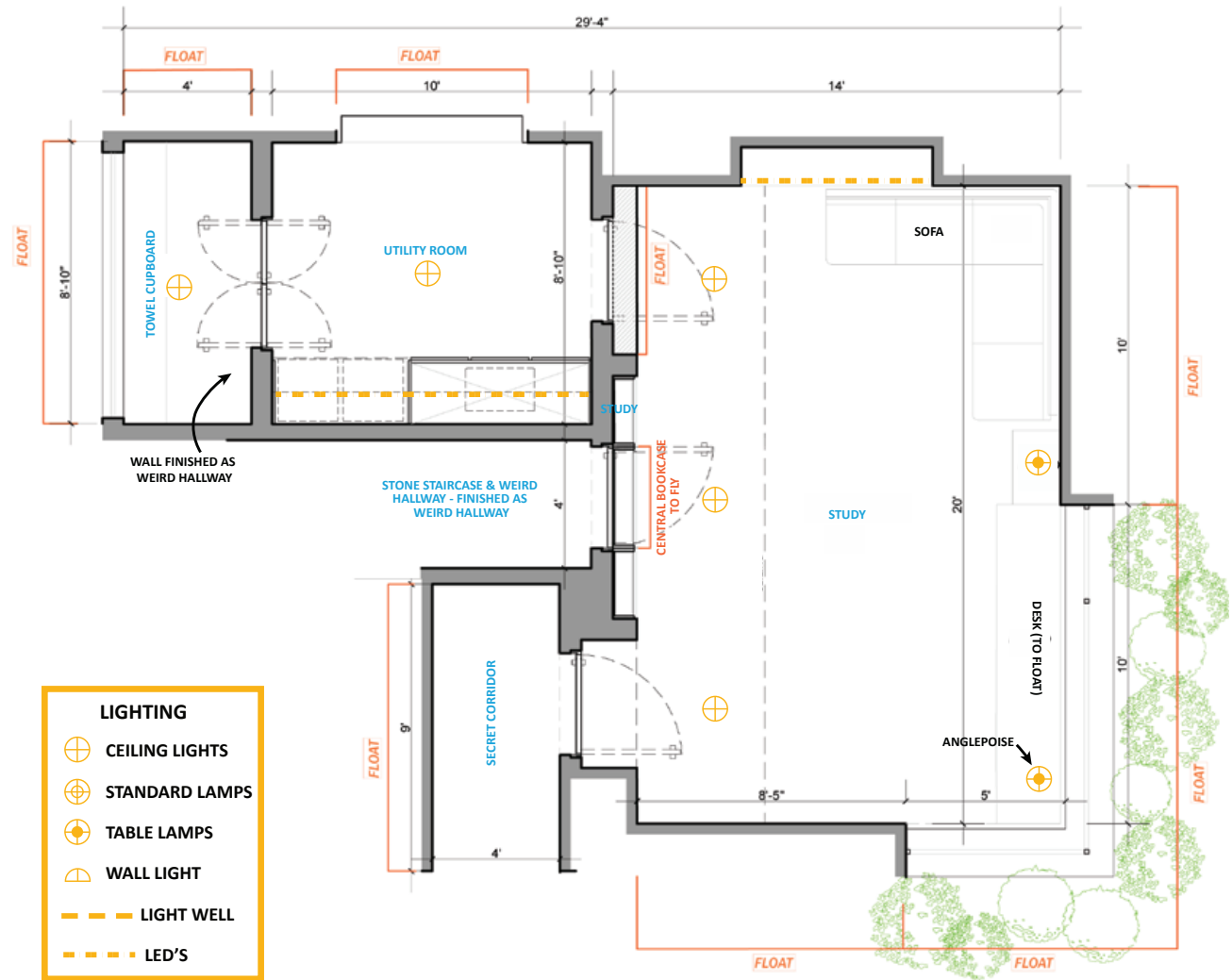
- CEILING TO BE WOOD AS LOCATION
- FLOOR AS TERRAZZO TILES, CEILING AS WOOD - ALL TO MATCH EXISTING LOCATION.
- SHADOW GAP RUNNING AROUND THE EDGE OF THE FLOOR AND CEILING.
- STYLE OF THE "STONE HALLWAY" DOOR IS TBC, MAIN DOOR TO STUDY IN THE STYLE OF EXISTING LOCATION DOORS.
- FINISH OF THE WALLS TBC

'YSHL'		Set No. 005	DWG No. S007
Set		STUDY ROOM REVISION A	
Details		FLOOR PLAN AND ELEVATIONS	
Location / Stage		FOUNTAIN STUDIOS	
Date drawn	13.09.18	Drawn by	L. PISSURNO
Date issued	14/09/2018	Revised	REV. A
Director		Production Designer	
DAVID KOEPP		SOPHIE BECHER	
Director	Art Dept	Construction	VFX
Camera	Set Dec	Plasterers	SFX
Lighting	Graphics	Painters	Metalwork
Locations	Props	Riggers	Scenic Artist
Production	Prop making	Sculptors	Stunts

FINISHES



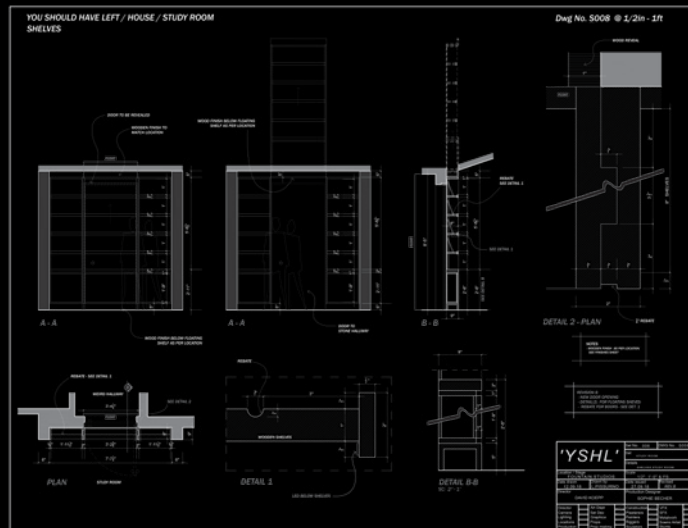
PLAN







INT. STUDY - SET



INT. STUDY - SHOWING THE SLIDING BOOKCASE



INT. THE HOUSE, LIVING ROOM



INT. THE HOUSE - KITCHEN



INTERIOR HOUSE LIGHT CORRIDORS

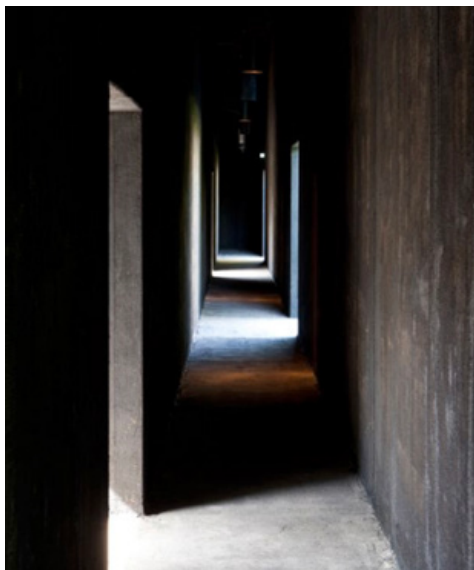


MOODBOARD - BEHIND THE THIRD DOOR

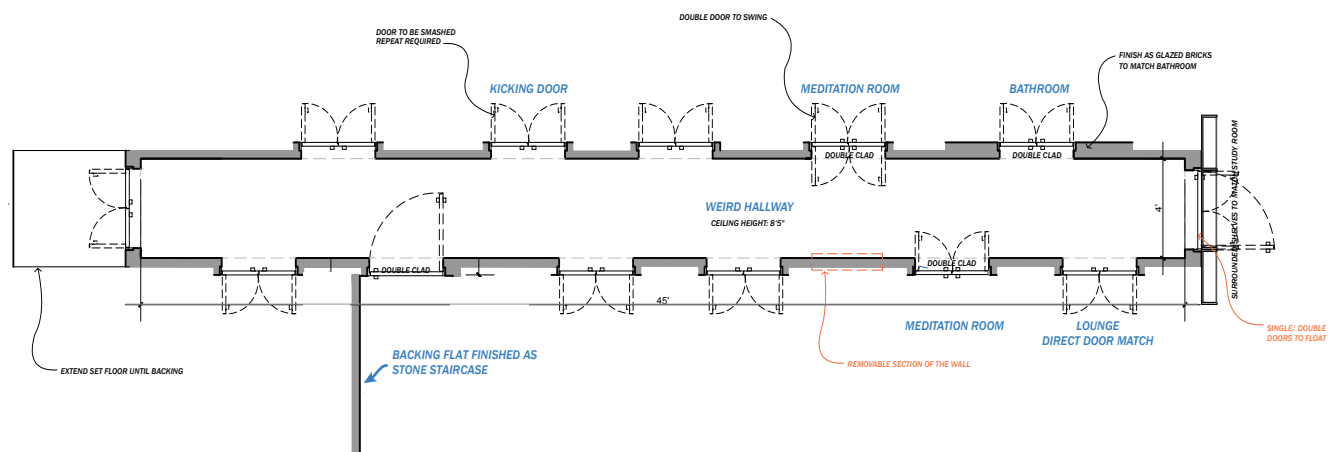


INT. THE HOUSE - BLACK CORRIDOR

REFERENCES



PLAN





INT. WEIRD HALLWAY - SET

REFERENCES



LOCATION PHOTOS





REFERENCES



LOCATION PHOTOS



EXT. VILLAGE SHOP - LOCATION





EXT. VILLAGE SHOP

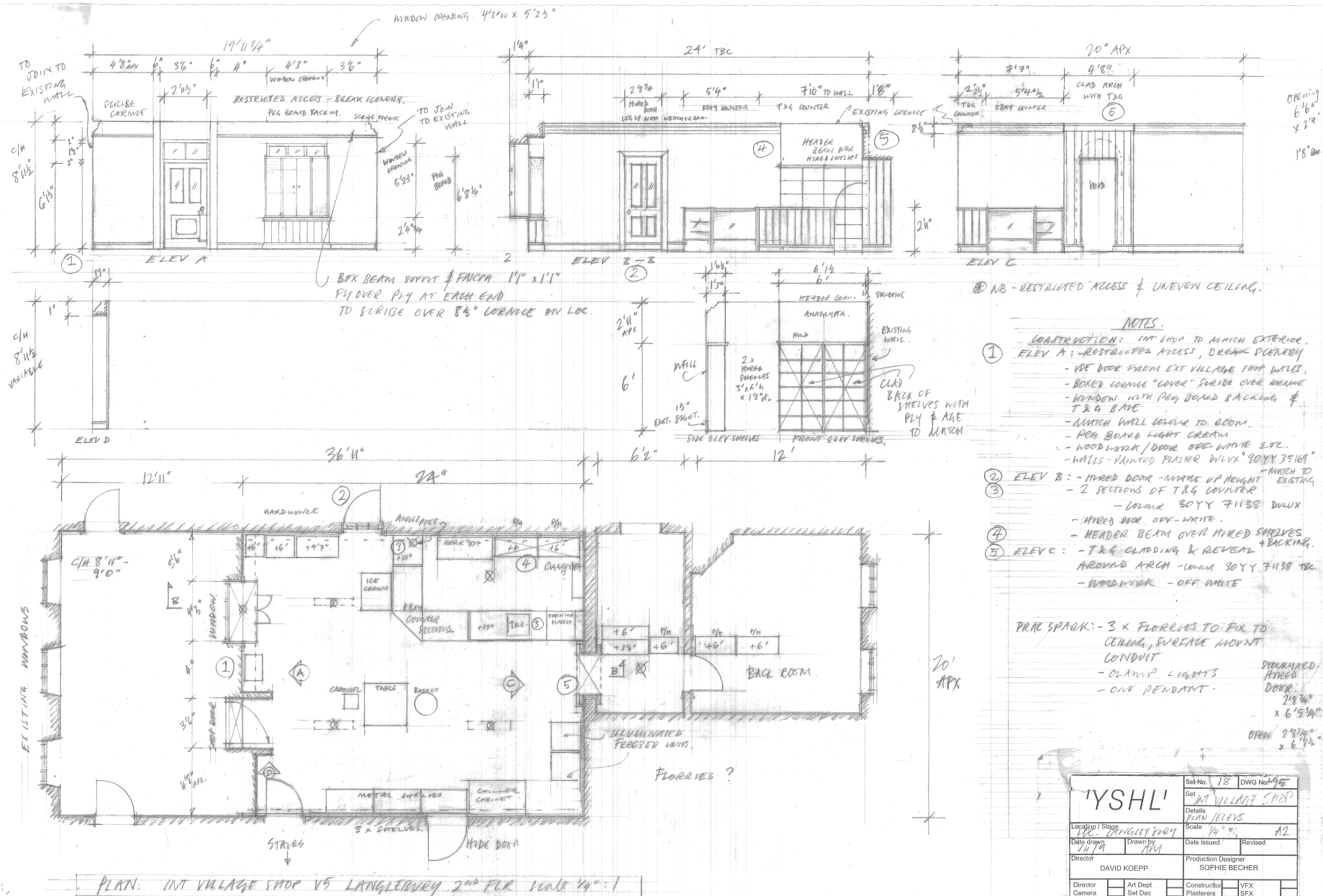
REFERENCES



LOCATION PHOTOS



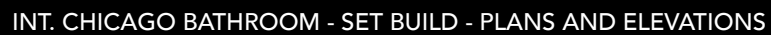
INT. VILLAGE SHOP - BUILD ON LOCATION



INT. VILLAGE SHOP - PLANS AND ELEVATIONS



INT. VILLAGE SHOP - SET





INT. CHICAGO BATHROOM - SET

REFERENCES



LOCATION PHOTOS



THEO AND SUSANNA'S HOUSE - UK LOCATION TO BE USED FOR LA



PROPS FOR THE SET





WITH THANKS