

the **Politician** Season 2



Int Hobart's Campaign Headquarters

















NOTES:

SQUARE FOOTAGE:

- WAR ROOM = 630 SQ FT
- KITCHEN = 60 SQ FT
- BATHROOM = 60 SQ FT
- PAYTONS OFFICE = 240 SQ FT
- JAMES & MCAFEE'S OFFICE = 180 SQ FT
- HALLWAY BETWEEN JAMES' & PAYTONS OFFICE = 60 SQ FT
- HALLWAY FROM WAR ROOM TO ELEVATOR ENTRY = 325 SQ FT
- RECEPTION AREA & HALLWAY = 210 SQ FT
- ELEVATOR = 17 SQ FT

- PARQUET IN WAR ROOM, PAYTONS OFFICE, JAMES OFFICE, & HALLWAY FROM WAR ROOM TO ELEVATOR ENTRY, PER SET DEC.
- 12X17 LINO TILE IN KITCHEN & HALLWAY BETWEEN JAMES' & PAYTONS OFFICE, PER SET DEC.
- DOOR THRESHOLDS AS MARBLE.

JC BACKING
HDC-484 (86 x 20)



FROM FLOORING

PURCHASED SKYLIGHTS & VENTS WILL BE WILD. PLACEMENT TBD

PURCHASED SKYLIGHTS WILL BE WILD. PLACEMENT TBD

PURCHASED SKYLIGHTS WILL BE WILD. PLACEMENT TBD

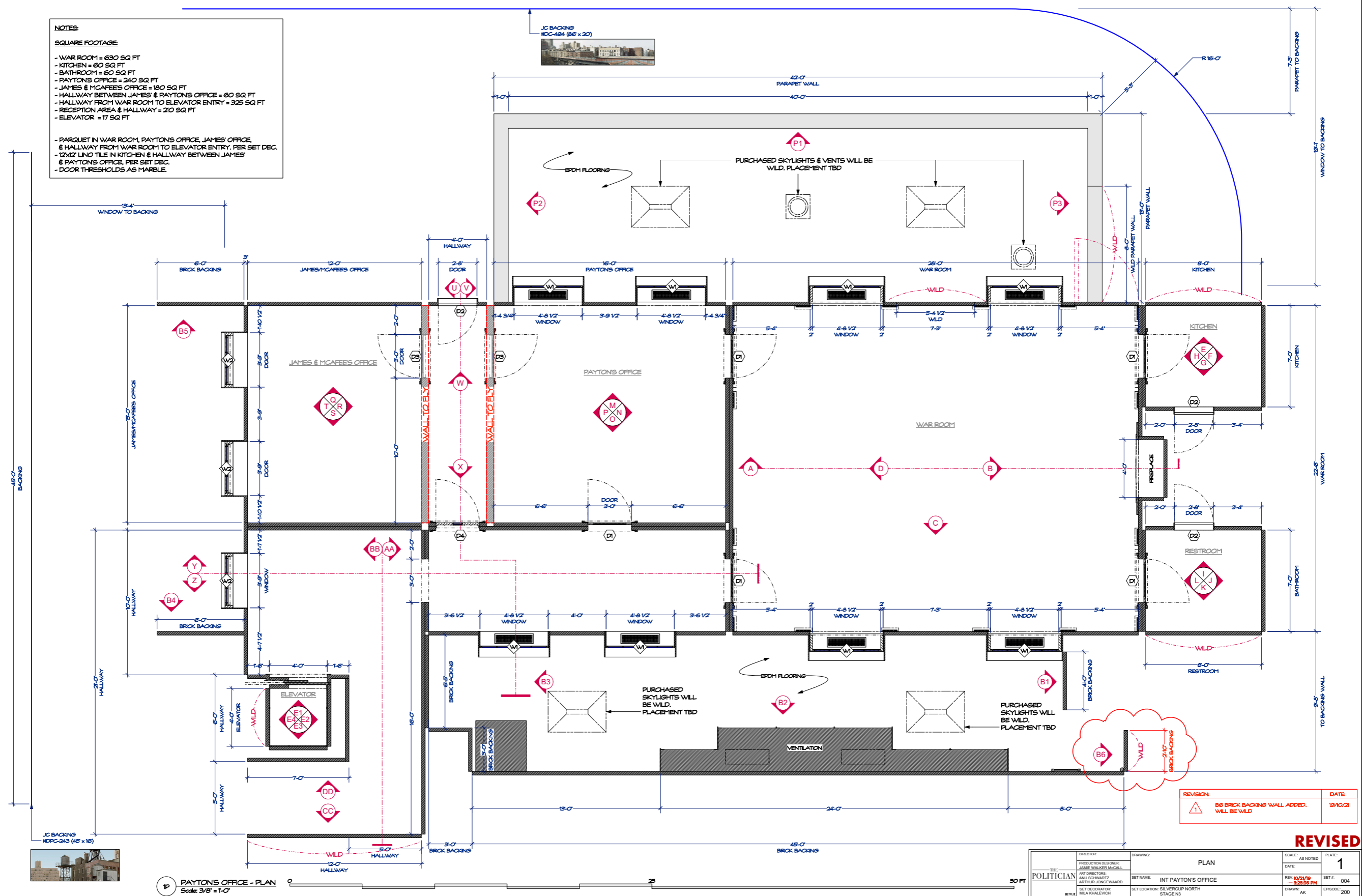
REVISION	DATE
1 B6 BRICK BACKING WALL ADDED. WILL BE WILD	19/10/21

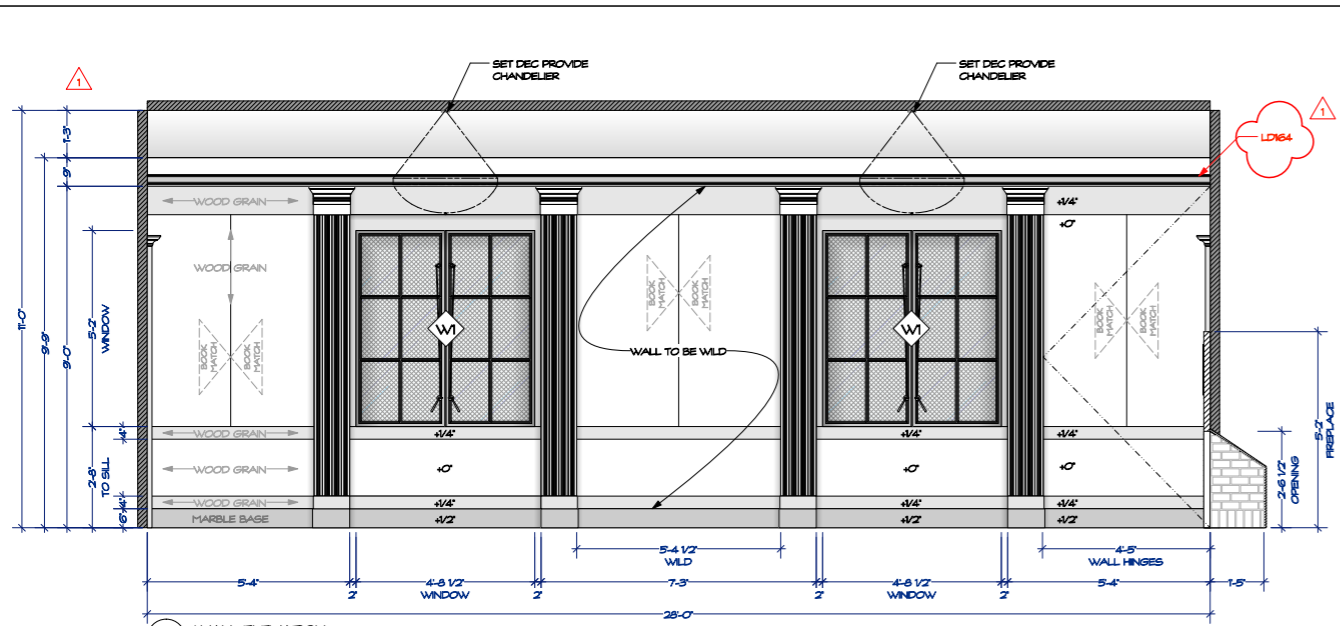
REVISED

POLITICIAN		PLAN		SCALE: AS NOTED	PLATE: 1
TITL: POLITICIAN		DRAWING: INT PAYTONS OFFICE		DATE: 10/21/19	SET #: 004
DIRECTOR: JAMES WALKER MUGALL		SET LOCATION: SILVERCUP NORTH STAGE N3		REV: 10/21/19 3:28:36 PM	EPSOCC: 200
ART DIRECTORS: ANKI SCHWARTZ, ARTHUR JONGEWAARD		DRAWN: AK			
SET DECORATOR: MILA KHANLEVIC					

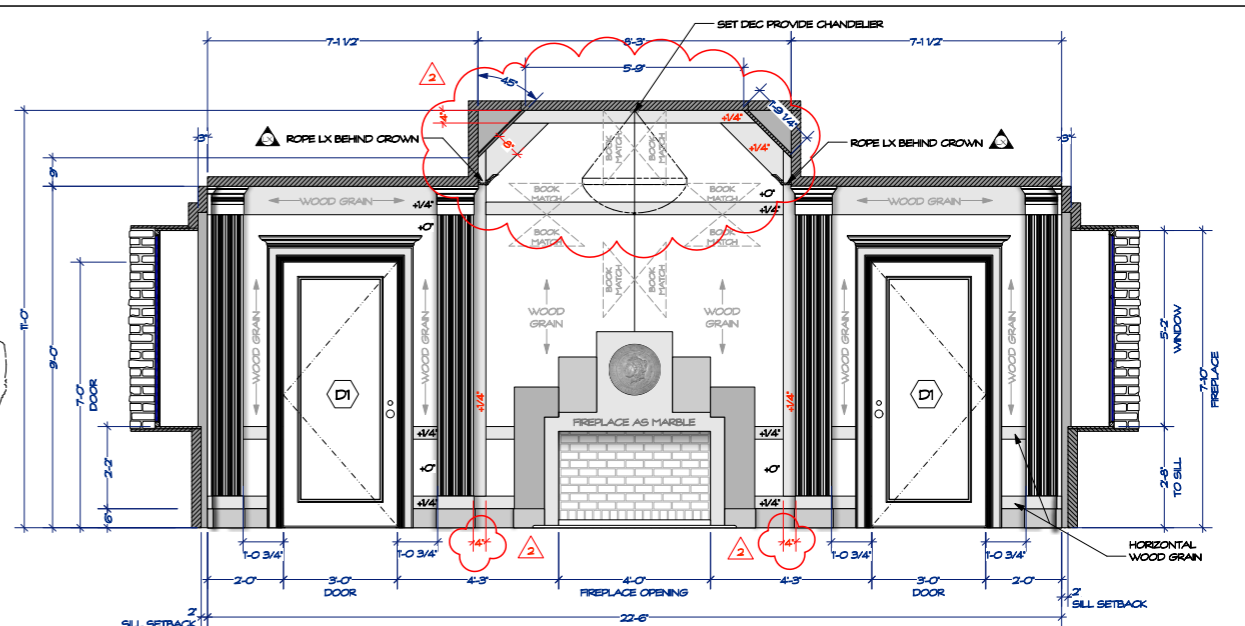
1P PAYTONS OFFICE - PLAN
Scale: 3/8" = 1'-0"

50 FT

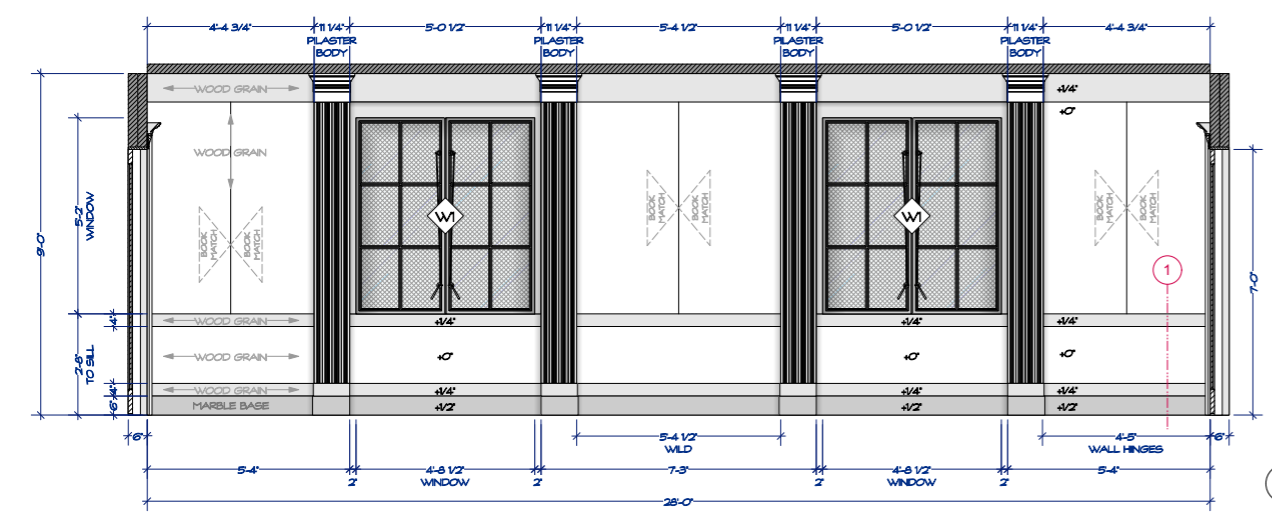




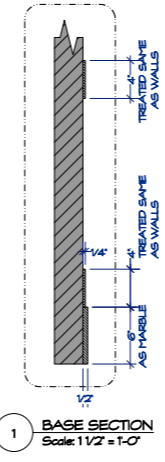
A WALL ELEVATION
Scale: 1/2" = 1'-0"



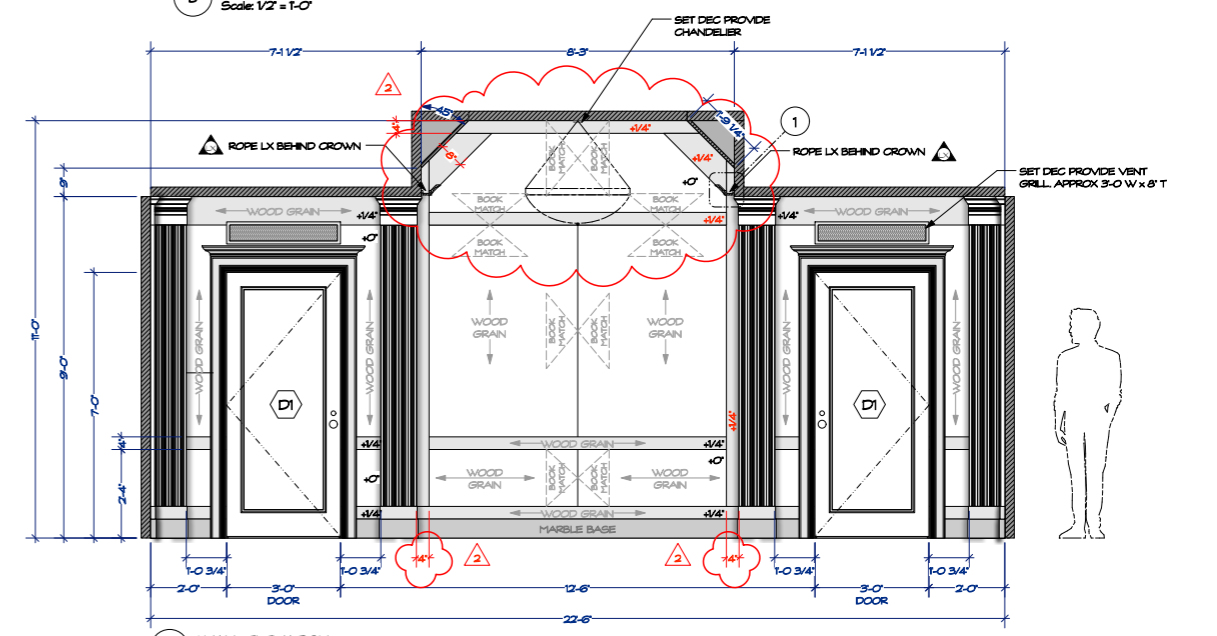
B WALL ELEVATION
Scale: 1/2" = 1'-0"



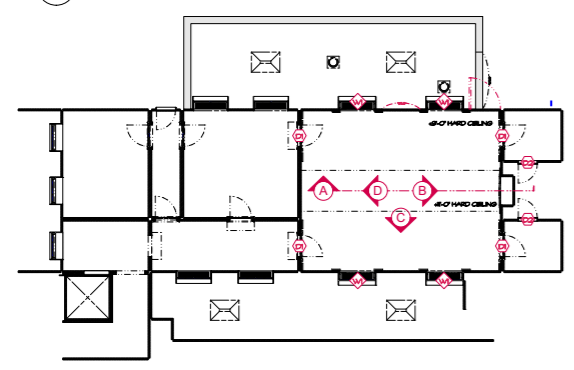
C WALL ELEVATION
Scale: 1/2" = 1'-0"



1 BASE SECTION
Scale: 1 1/2" = 1'-0"



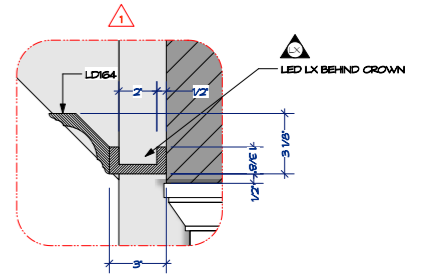
D WALL ELEVATION
Scale: 1/2" = 1'-0"



1P PAYTON'S OFFICE PLAN
Scale: 3/32" = 1'-0"

NOTE

- WINDOW & DOOR DETAILS ON PLATES 13 & 15
- NOTE WLD & HINGED SECTIONS OF WALL A
- NOTE WOOD GRAN & BOOK MATCHING DIRECTION
- NOTE 1/4" LAYERED BUILD UP ON ALL WALLS
- BASEBOARD AS MARBLE 1/2"
- PLASTER DETAIL ON PLATE 5
- ANGLED CEILING & 11'-0" TALL CEILING PAINT TREATMENT TBD.
- DECORATIVE CEILING VACUFORM ON PLATES 2B & 2C



2 CROWN DETAIL
Scale: 3" = 1'-0"

REVISION	DATE
1. FRIEZE NO LONGER NEEDED. CROWN W/ LED LIGHT RELOCATED.	19/10/07
2. ADDITIONAL 1/4" THICK PLANT ON STRIPS WHERE NOTED	19/10/07

DIRECTOR		DRAWING		SCALE: AS NOTED		PLATE: 4	
PRODUCTION DESIGNER: JAMIE WALKER MCCALL		WAR ROOM ELEVATIONS A-C		DATE:			
ART DIRECTORS: ANU SCHWARTZ, ARTHUR JONGEWARD		SET NAME: INT PAYTON'S OFFICE		REV: 10/7/19		SET#: 004	
SET DECORATOR: MELA KHALILOVICH		SET LOCATION: SILVERCUP NORTH STAGE NS		DRAWN: AK		EPISODE: 200	

REVISED

Int Standish Office













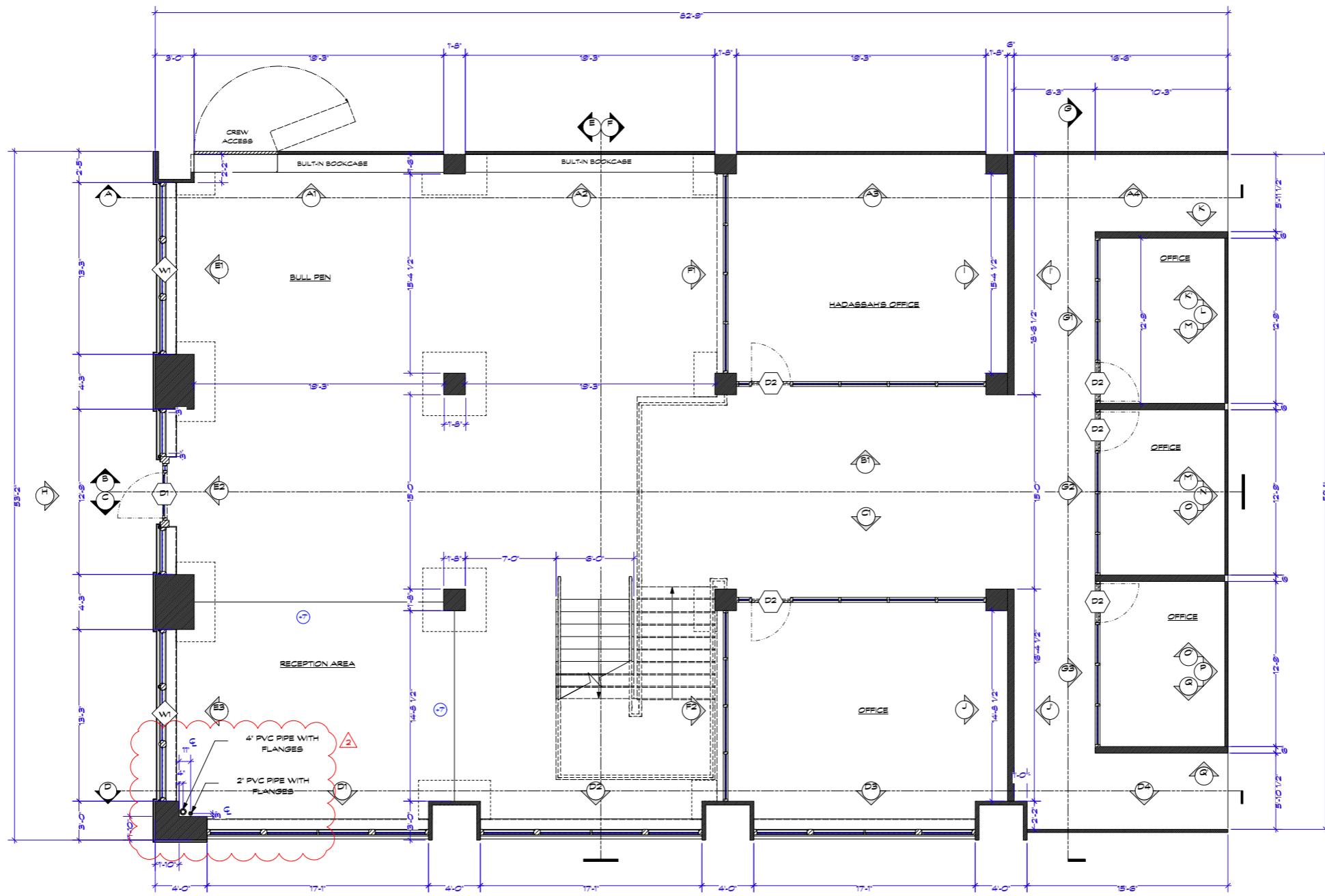




Standish Office Illustration

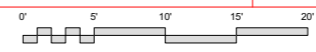


Standish Office Illustration



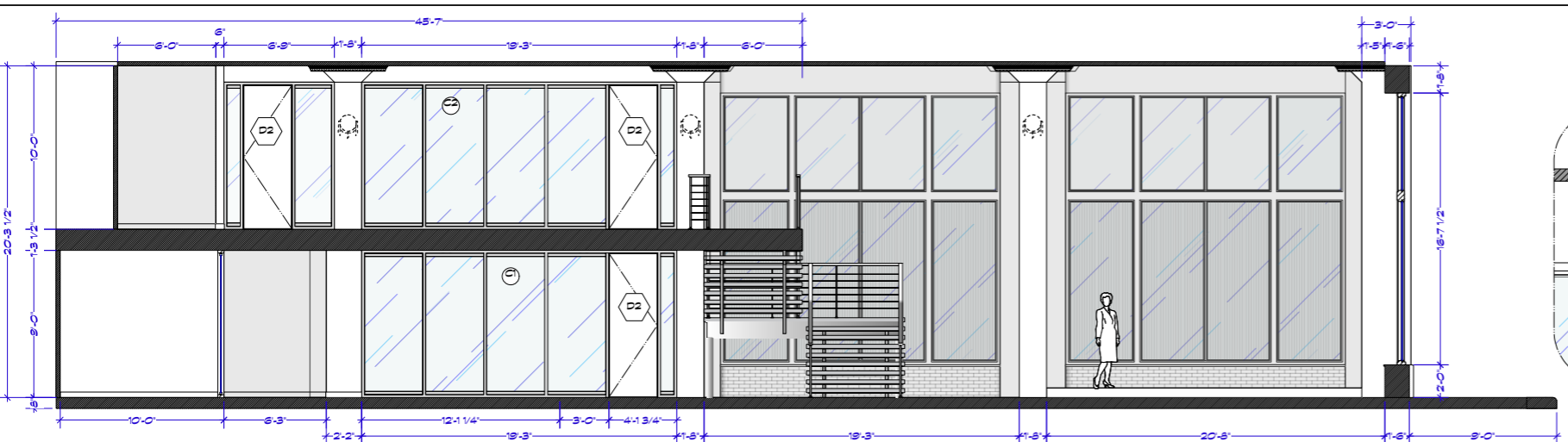
1 LOWER LEVEL
Scale: 1/4" = 1'-0"

REVISION:	DATE:
△ DOOR IN STOREFRONT PARTITION IS CUT	10/10/22
△ ADD PVC PIPES W/ FLANGES, PAINT AS METAL	10/10/23

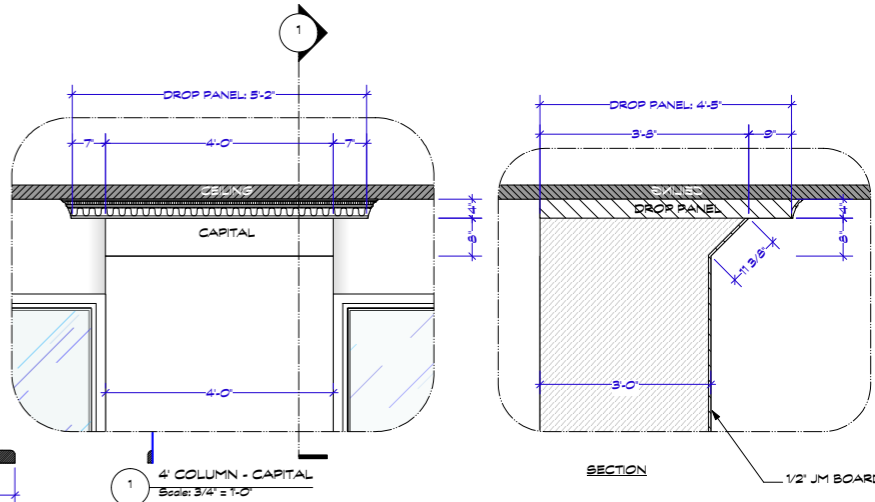


DIRECTOR:		DRAWING: GENERAL PLAN - LOWER LEVEL		SCALE: AS NOTED	PLATE: 1
PRODUCTION DESIGNER: JAMIE WALKER MICALL		DATE:			
ART DIRECTORS: ANI SCHWARTZ, ARTHUR JONGENBERG		SET NAME: INT STANDISH OFFICE		REV: 10/28/19	SET #: 200-03
SET DECORATOR: MILA KHAYLEVICH		SET LOCATION: SILVERCUP NORTH STAGE 14		DATE: 11-26-22 AM	EPISODE: 201
DRAWN: AVS					

REVISED

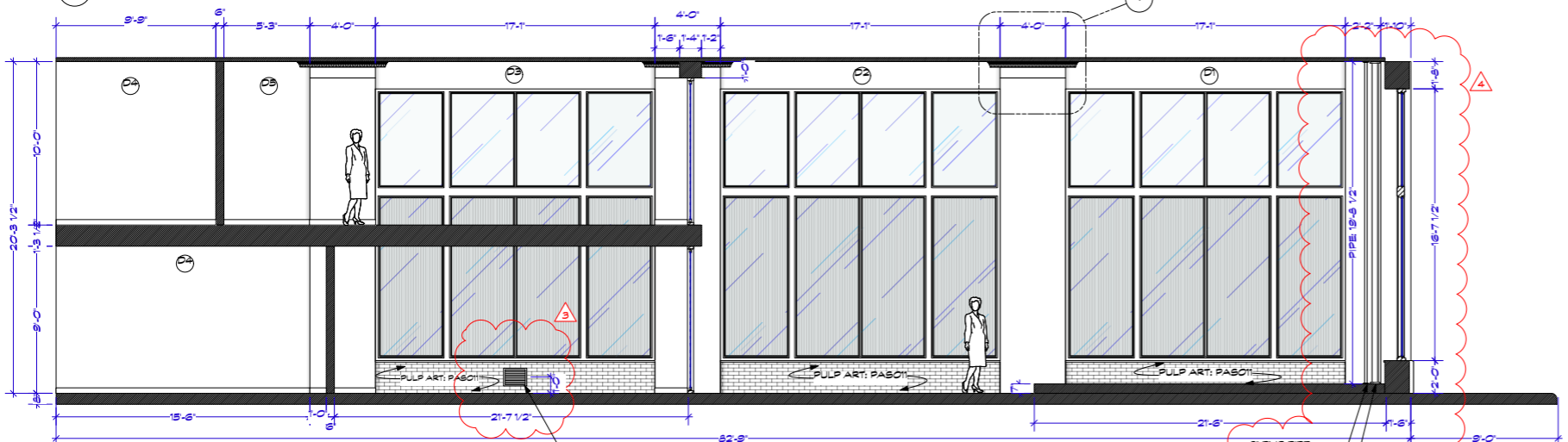


C GENERAL SECTION
Scale: 1/4" = 1'-0"



1 4' COLUMN - CAPITAL
Scale: 3/4" = 1'-0"

SECTION
1/2" JM BOARD

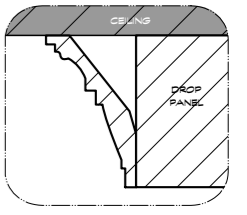


D GENERAL SECTION
Scale: 1/4" = 1'-0"

EKENA MILLWORK

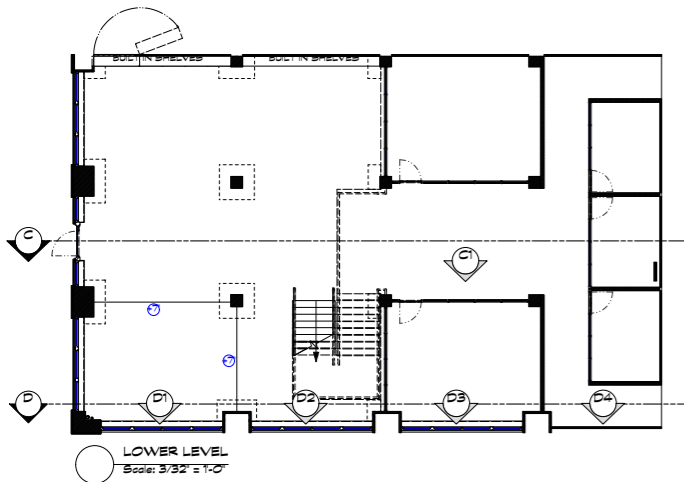
EDINBURGH MLD04X03X05ED				
F	H	P	L	Q
4 5/8"	4"	2 3/8"	94 5/8"	\$25.76

MIC03X04ED	
Inside Corner	#
MIC03X04ED	\$8.40
Outside Corner	#
MIC03X04ED	\$8.40

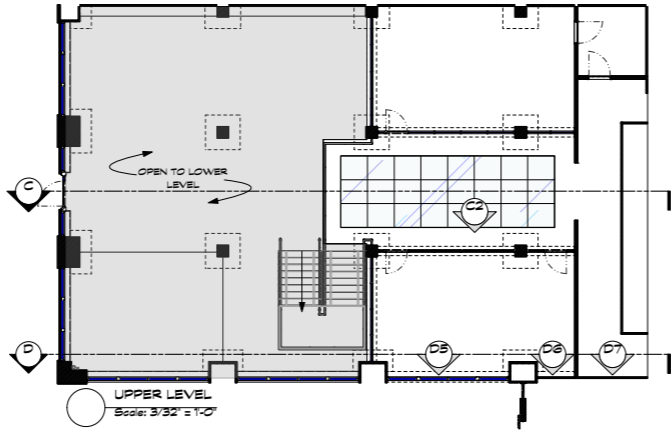


CAPITAL CROWN MOULDING
Scale: Half Actual Size

2" PVC PIPE AND FLANGES
4" PVC PIPE AND FLANGES



LOWER LEVEL
Scale: 3/32" = 1'-0"



UPPER LEVEL
Scale: 3/32" = 1'-0"

NOTES:

- PULP ART. PABOII APPLIED TO FACE OF 2'-0" KNEE WALL
- OTHER FINISHES TBD

REVISION	DATE
1 DOOR IN STOREFRONT PARTITION C1 IS CUT	10/10/02
2 PULP ART. PABOII APPLIED TO FACE OF KNEE WALL	10/10/02
3 VENT ADDED TO WALL D3	10/10/07
4 ADD PVC PIPES W/FLANGES, AS PAINTED METAL	10/10/23

DIRECTOR		DRAWING		SCALE: AS NOTED	PLATE: 6
PRODUCTION DESIGNER: JAMIE WALKER-BICALL		GENERAL SECTION C AND D		DATE:	
ART DIRECTORS: ANI SCHWARTZ, ARTHUR JONGENBERG		SET NAME: INT STANDISH OFFICE		REV: 10/28/19	SET #: 200-03
SET DECORATOR: MILA KHAYEVICH		SET LOCATION: SILVERCUP NORTH STAGE 1A		DATE: 11-29-24 AM	EPISODE: 201
POLITICIAN		DRAWN: AVS			

REVISED

Int Standish Townhouse







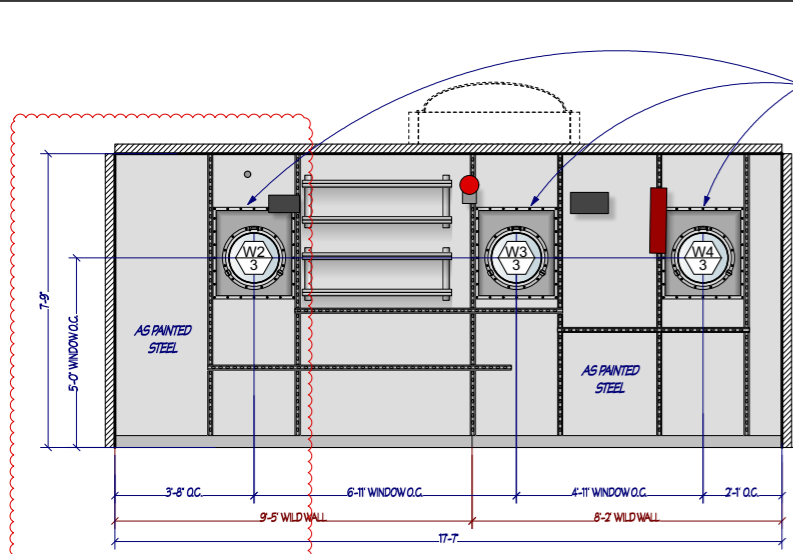
Int Operating Room



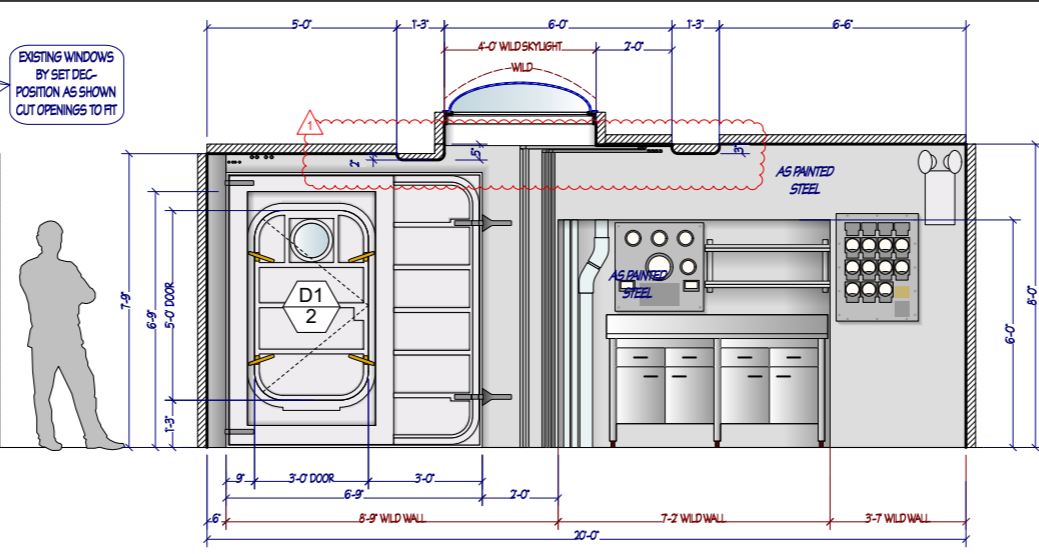




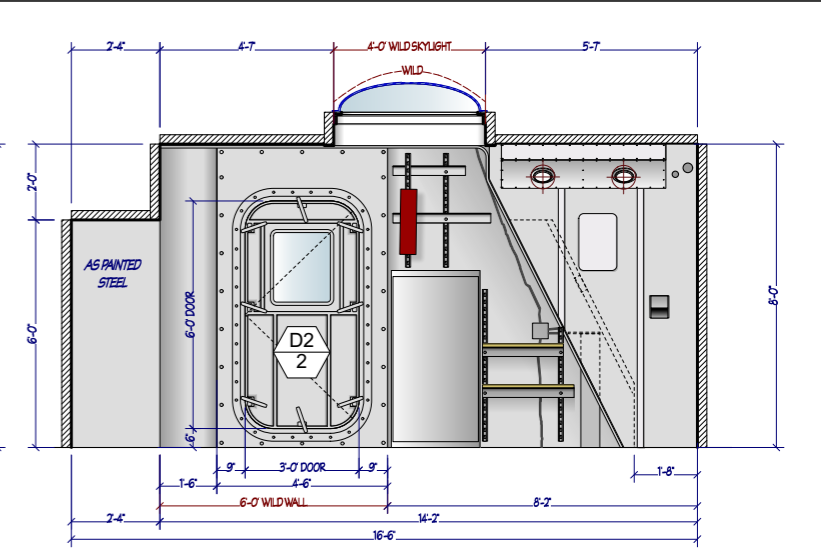




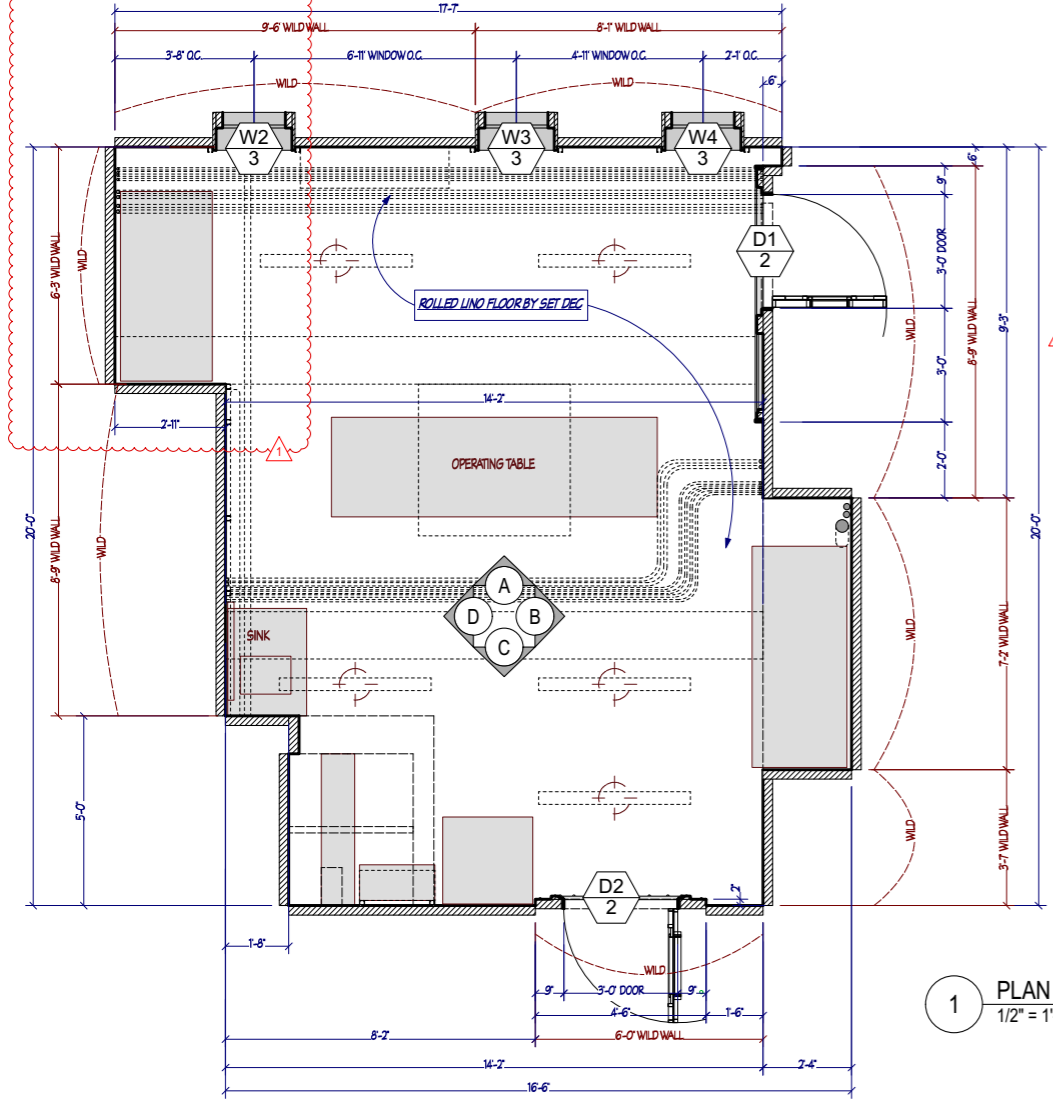
A ELEVATION
1/2" = 1'-0"



B ELEVATION
1/2" = 1'-0"

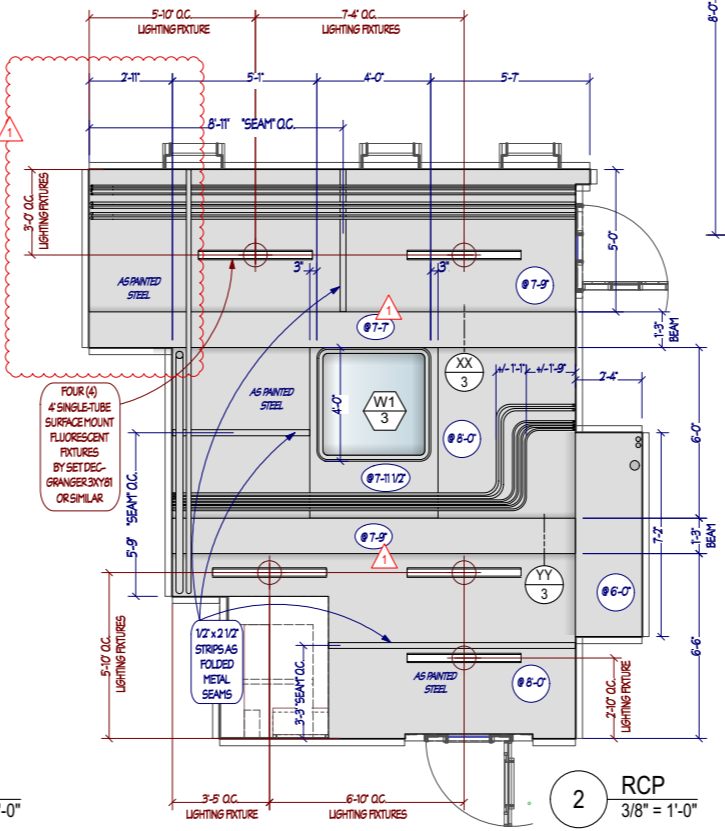


C ELEVATION
1/2" = 1'-0"

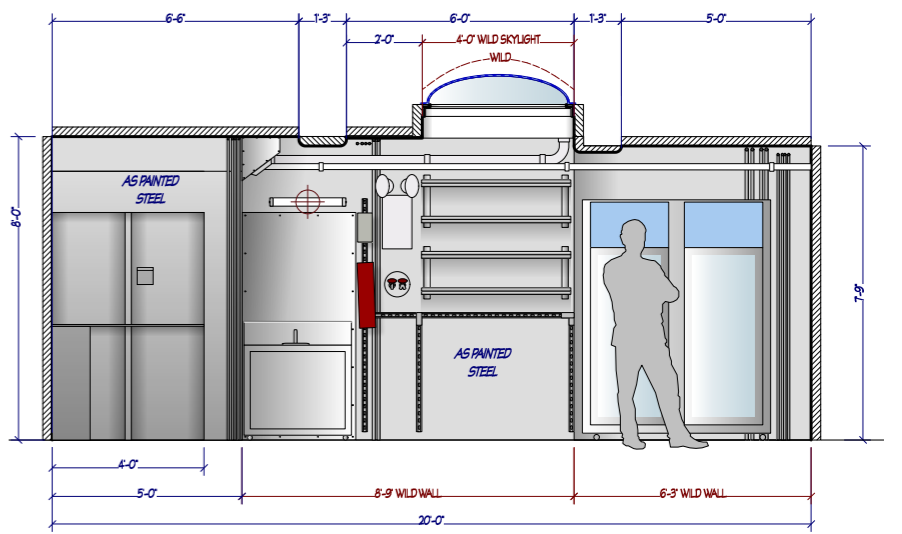


1 PLAN
1/2" = 1'-0"

FOR ADDITIONAL WALL DETAILS
SEE SHEET 4



2 RCP
3/8" = 1'-0"



D ELEVATION
1/2" = 1'-0"

REVISIONS:
▲ 11/0719- RECESS IN WALL D, WALL A EXTENDED, BEAM HEIGHT

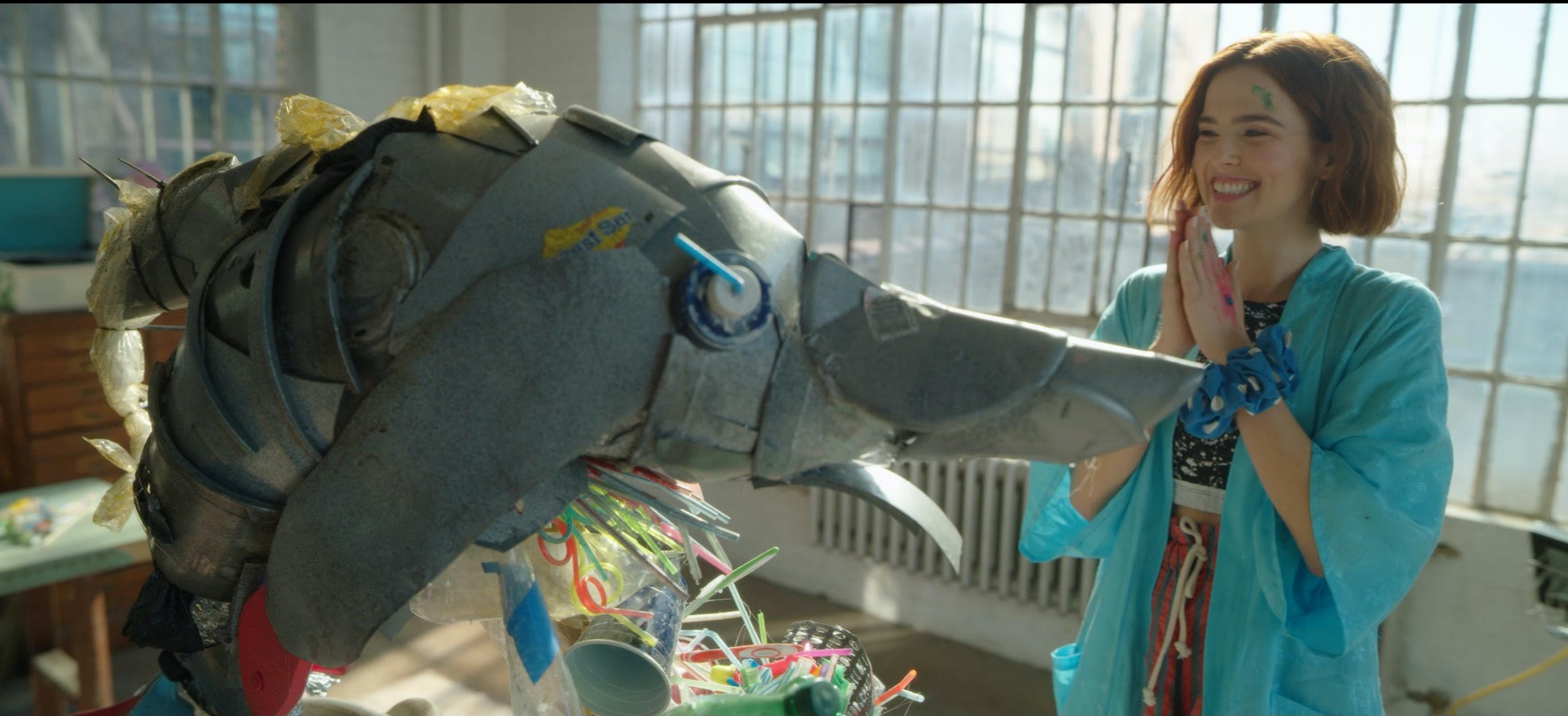
REVISED
11/07/19

RELEASED

DIRECTOR:	DRAWING:	SCALE:	PLATE:
THE POLITICIAN	PLAN AND ELEVATIONS	AS NOTED	1
PRODUCTION DESIGNER: JAMIE WALKER-MICALL	SET NAME:	DATE:	SET #:
ART DIRECTORS: ARND SCHWARTZ ARTHUR JONGEWAARD	INT OPERATING ROOM	REV 11/07/19 5:41:36 PM	201-05
SET DECORATOR: MELA KHALILOVICH	SET LOCATION: SILVERCLIP NORTH STAGE NS	DRAWN: BO	EPISODE: 201

Int Art Studio





Int Double Flannel Ranch Garage







Double Flannel Ranch Illustration



Double Flannel Ranch Illustration

Int Nokia Theater









Int Nokia Theater Illustration

Int Serendipity



Int Uptown Restaurant



Ext Lobster Boat Off of the Coast of Gloucester







Production Designers
Jamie McCall & Anu Schwartz

Set Decorator
Mila Khalevich

Art Director
Arthur Jongewaard

Assitant Art Directors
Adam Karavatakis
Alina Smirnova

Scenic Artists
Joe Garzero
Colin Brantley

Concept Artist
Eric Fehlberg

Graphic Designer
Andrea Burrell

Thank you for your consideration