

An aerial photograph of a city in ruins. In the center, a large, weathered green dome sits atop a partially destroyed stone structure. The surrounding area is a dense collection of low-rise buildings, many of which are crumbling or reduced to rubble. Puffs of dark smoke rise from the city in the background under a hazy, overcast sky. The foreground is filled with debris, including large concrete blocks and twisted metal. The word 'MOSUL' is superimposed in large, white, semi-transparent letters across the middle of the image.

MOSUL

PRODUCTION DESIGNER- PHIL IVEY

BOMBED CAFE- SET PHOTO



BOMBED CAFE- SET PHOTO



BOMBED CAFE- SET PHOTO



BOMBED CAFE- SET PHOTO



BOMBED CAFE- SET PHOTO



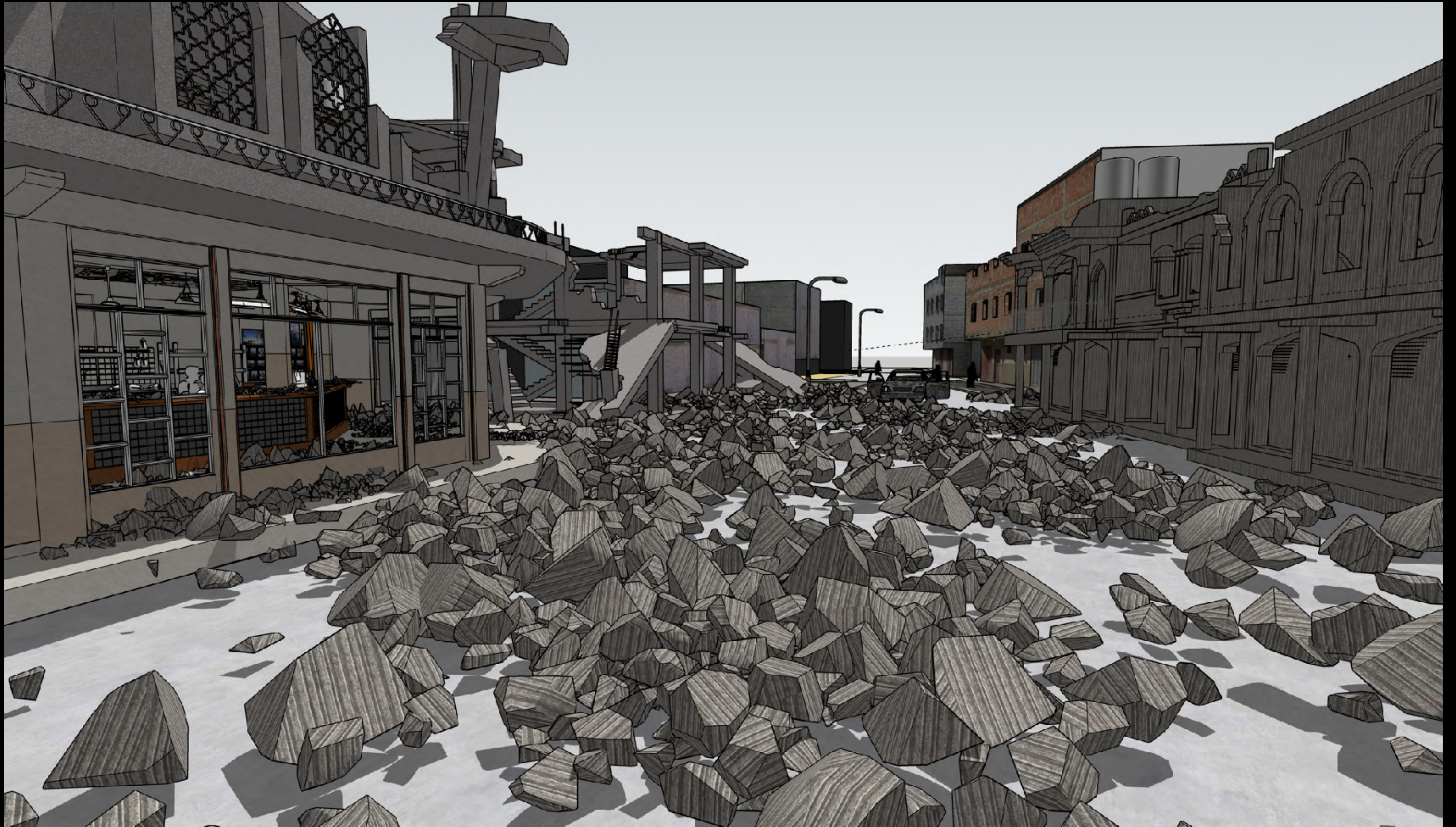
BOMBED CAFE- SET PHOTO



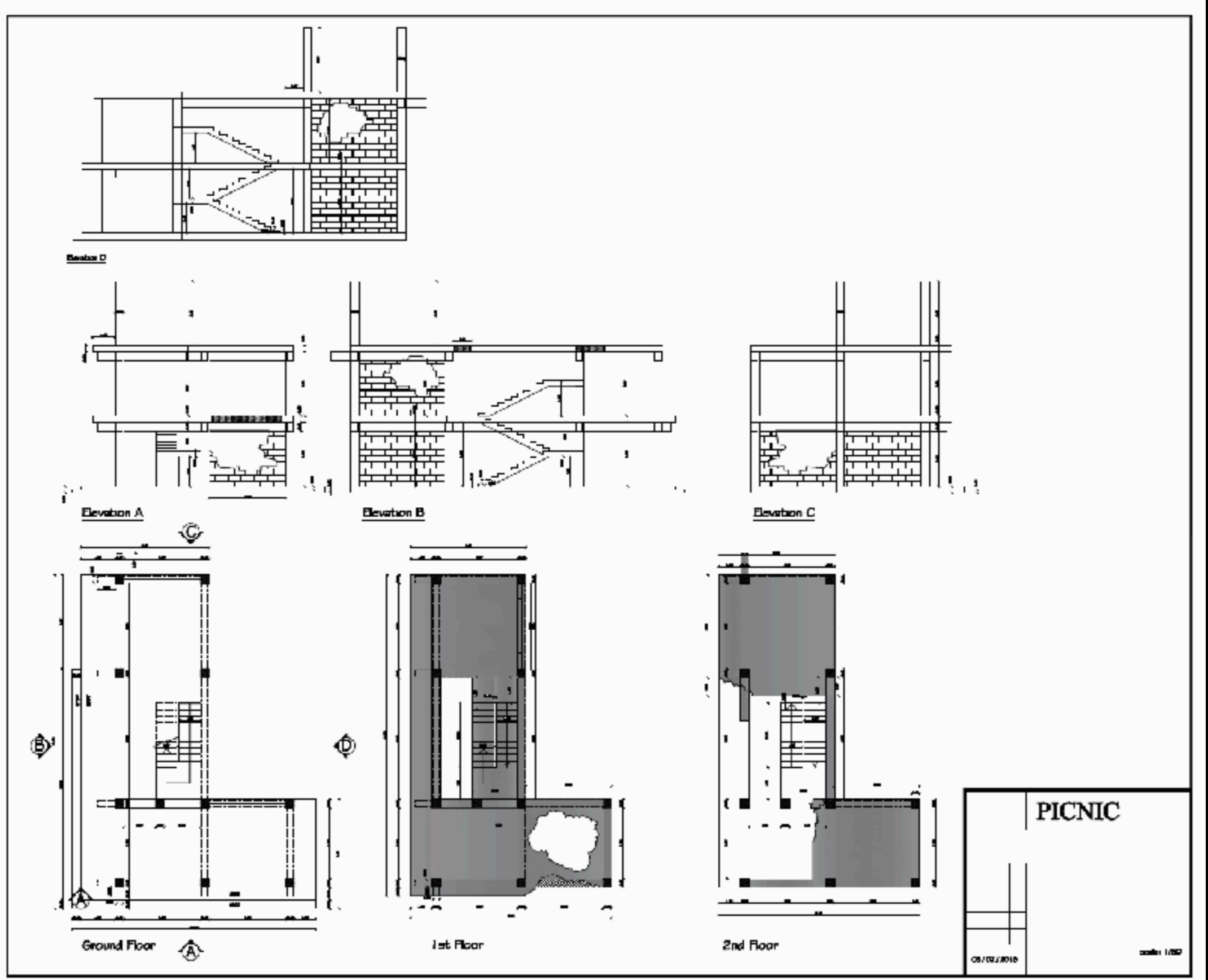
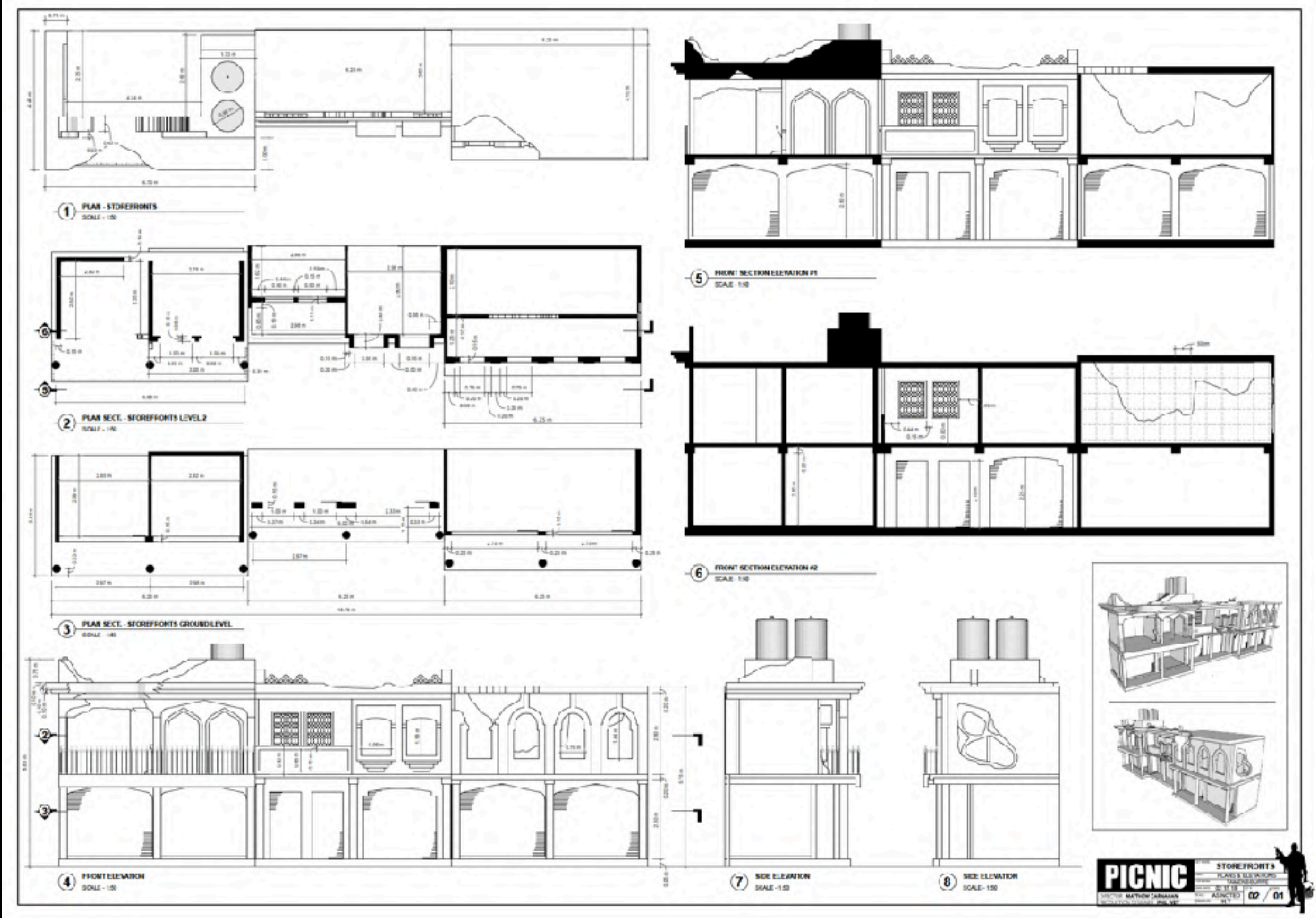
BOMBED CAFE- RENDER



BOMBED CAFE- RENDER



BOMBED CAFE- CONSTRUCTION DRAWINGS



ONCE NICE HOTEL- SET PHOTO



ONCE NICE HOTEL- SET PHOTO



ONCE NICE HOTEL- SET PHOTO



ONCE NICE HOTEL- SET PHOTO



ORPHANS- CONCEPT



ORPHANS- SET PHOTO



CHECKPOINT- RENDER



CHECKPOINT- SET PHOTO



MINEFIELD/ SNIPER ROOFTOP- CONCEPT



MINEFIELD/ SNIPER ROOFTOP- SET PHOTO



MINEFIELD/ SNIPER ROOFTOP- SET PHOTO



MINEFIELD/ SNIPER ROOFTOP- SET PHOTO



MINEFIELD/ SNIPER ROOFTOP- SET PHOTO



MINEFIELD/ SNIPER ROOFTOP- SET PHOTO











HELL STREET- SET PHOTO



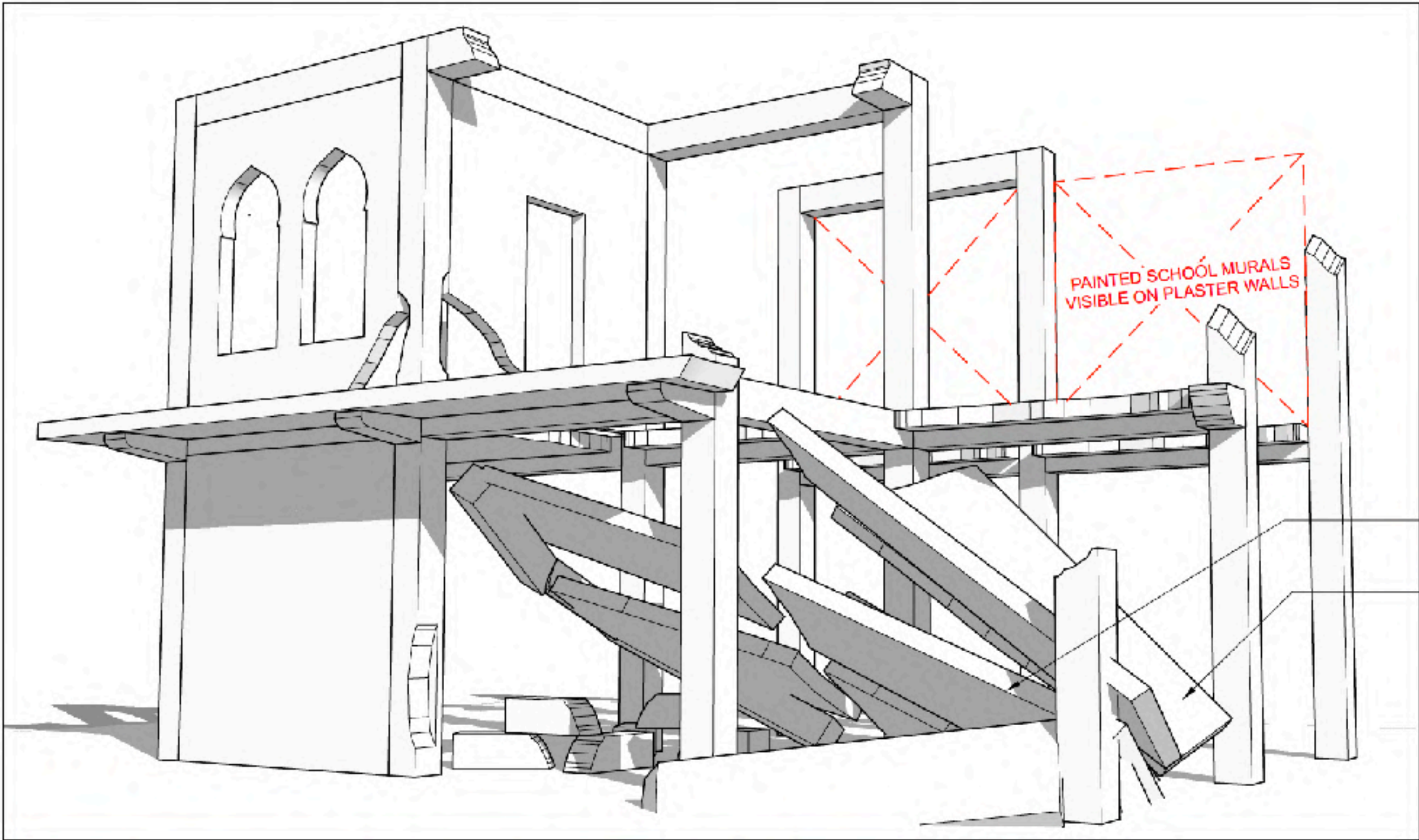
HELL STREET- SET PHOTO



HELL STREET- CONSTRUCTION PHOTO



HELL STREET- CONSTRUCTION DRAWING



PICNIC	SET NAME	HELL ST.	
	SWG	KEY PERSPECTIVE	
	LOCATION	DOUAR SULTAN	
	TWIST DATE	03.05.18	FILE
	SCALE	AS NOTED	07 / 04
DIRECTOR: MATTHEW CARNAHAN		DRAWN BY: H.Y.	
PRODUCTION DESIGNER: PHIL IVEY			

APPROACHING ISIS BASE- SET PHOTO



APPROACHING ISIS BASE- SET PHOTO



ISIS BASE- SET PHOTO



ISIS BASE- SET PHOTO



ISIS BASE- SET PHOTO



WALEED'S APARTMENT- SET PHOTO



WALEED'S APARTMENT- SET PHOTO



WALEED'S APARTMENT- SET PHOTO



WALEED'S APARTMENT- SET PHOTO



WALEED'S APARTMENT- SET PHOTO

