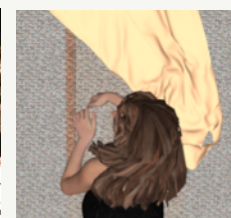
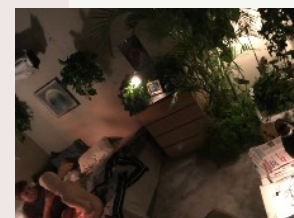
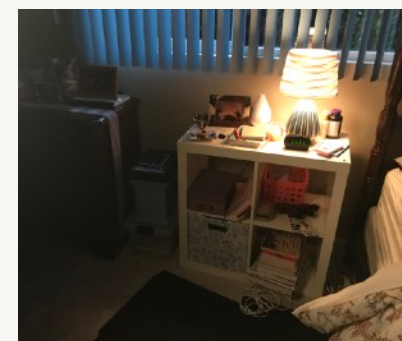
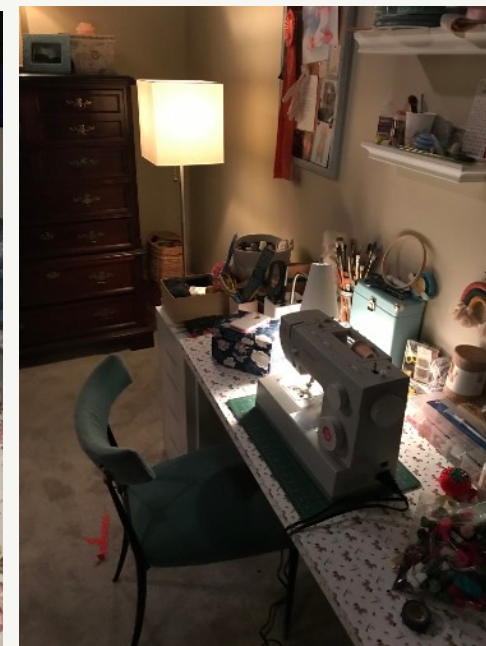
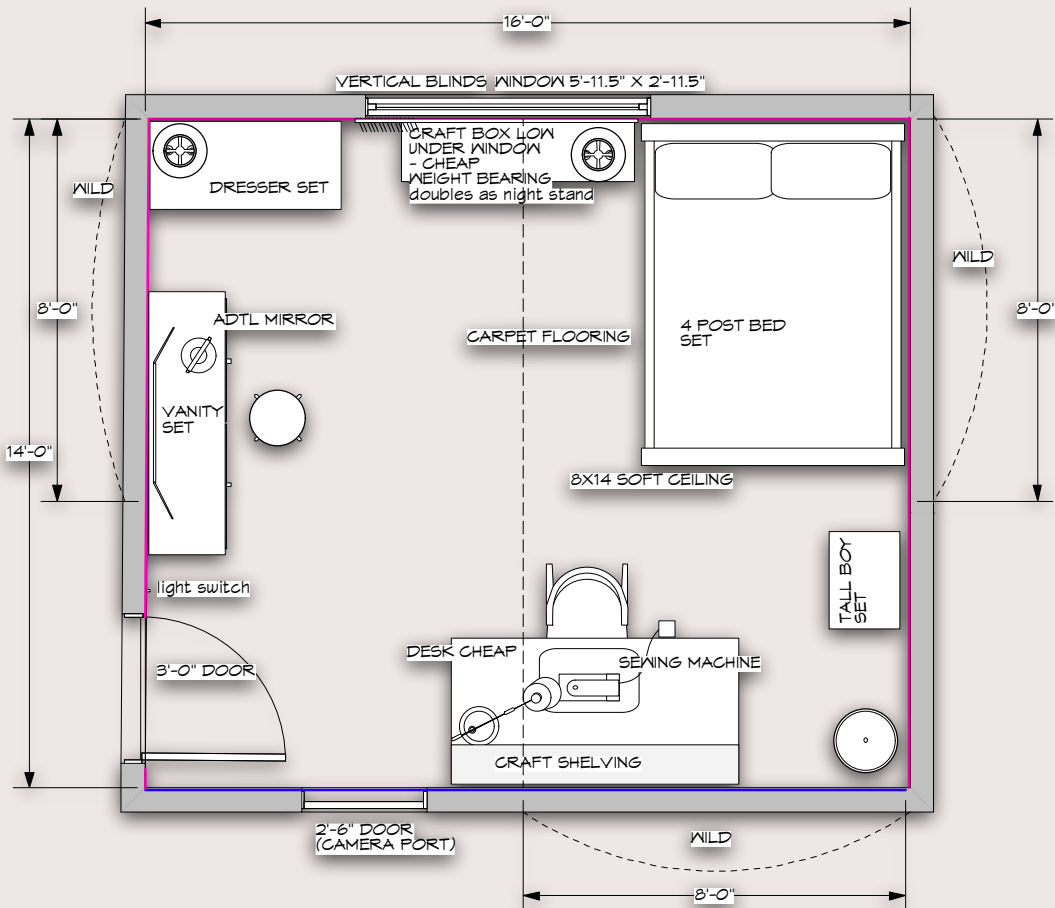


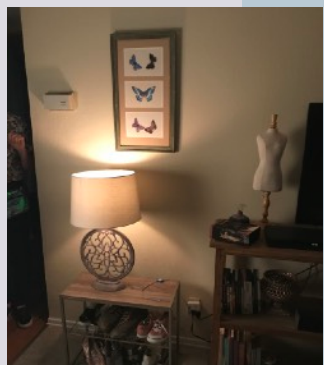
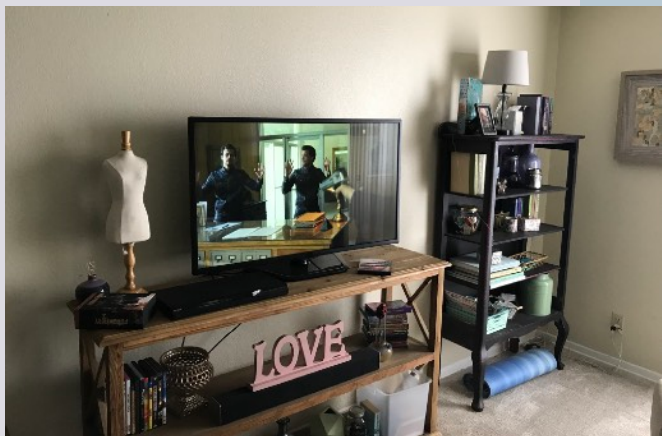
A close-up, high-angle shot of a young woman's face. She has long, wavy, reddish-brown hair and striking blue eyes. Her expression is contemplative as she looks slightly upwards and to the right. The background is a deep blue night sky filled with numerous small, bright stars. The lighting is soft, highlighting the texture of her hair and the contours of her face.

HORSE GIRL

Sarah's Bedroom

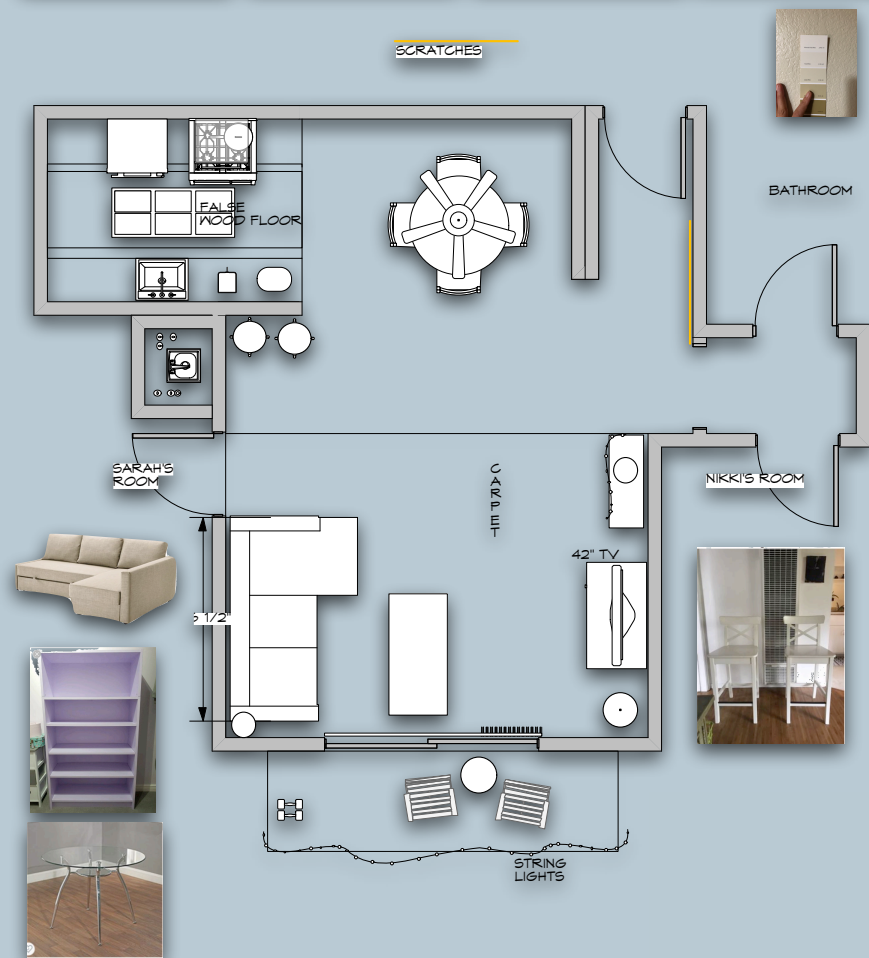
STAGE BUILD

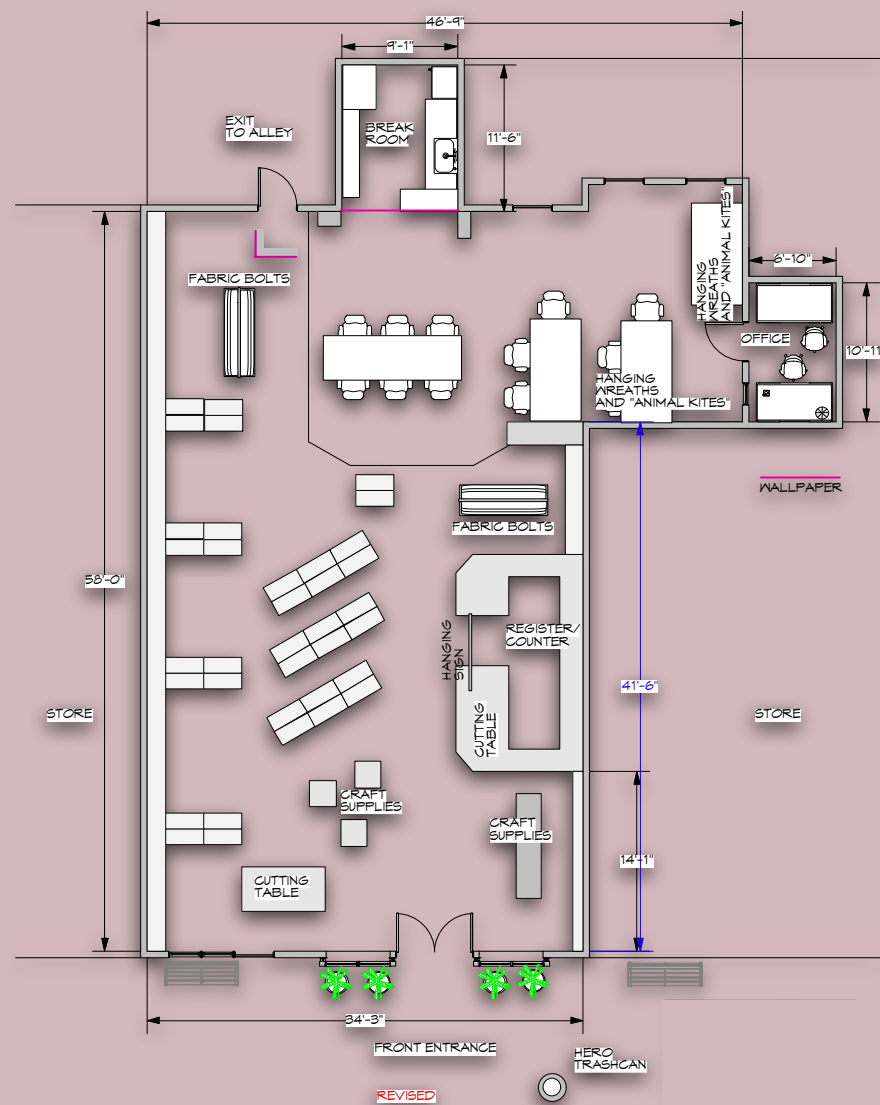




Sarah's Apt.

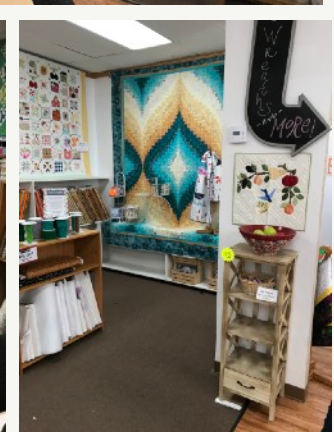
IN VARIOUS STATES

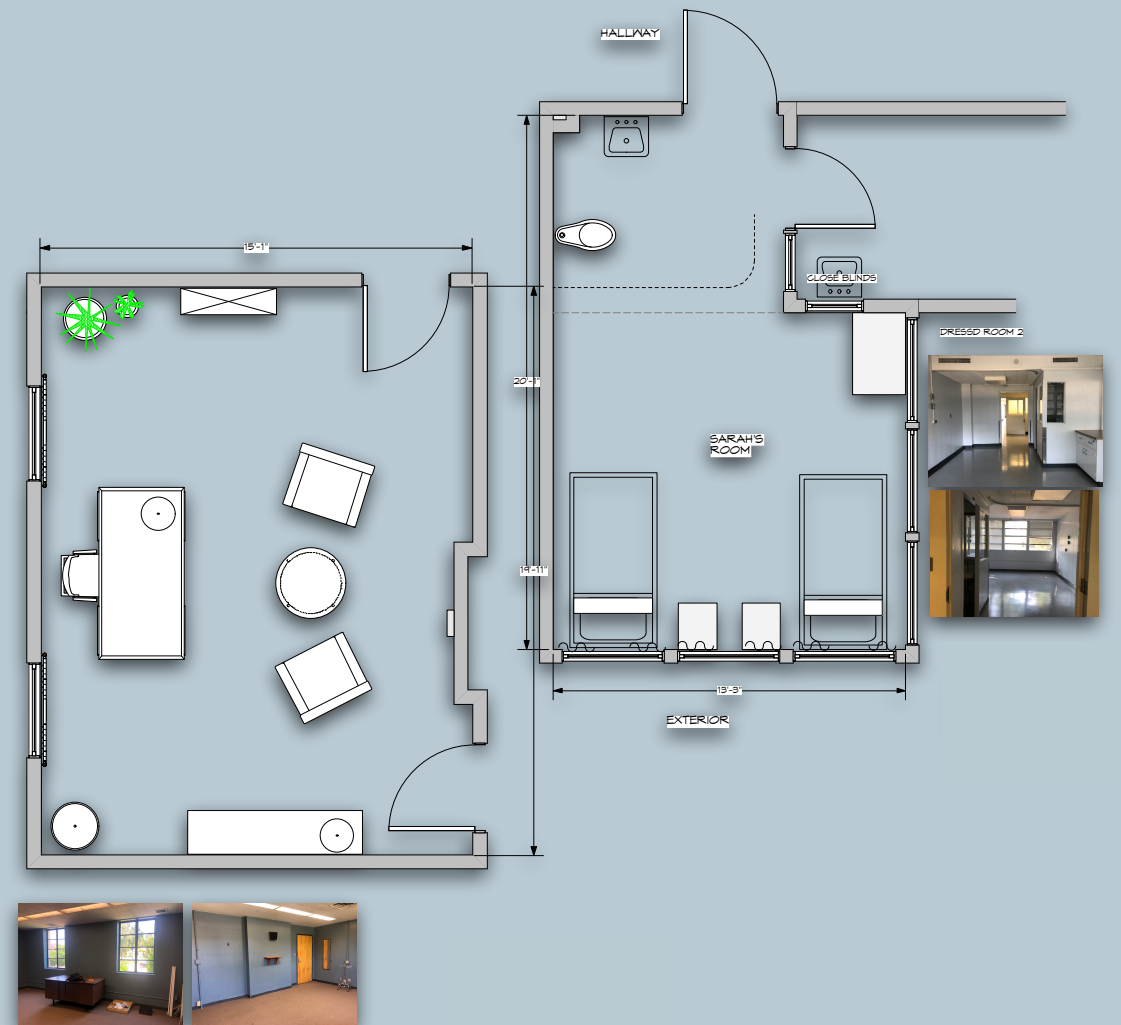




Great Lengths

FABRIC STORE





Psychiatric Facility

IN VARIOUS STATES



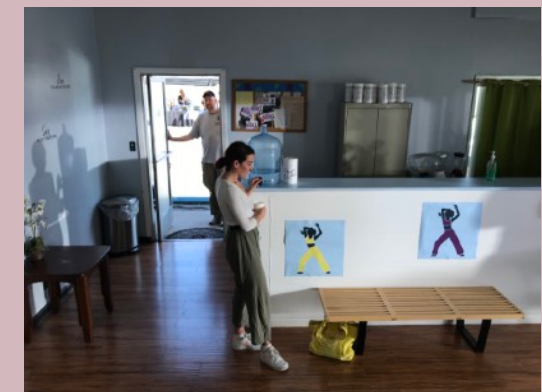
Purgatory



SARAH'S FAVORITE TV SERIES



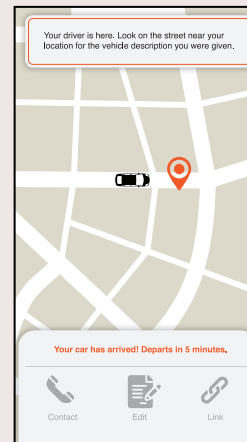
additional dressed locations . . .





Graphics

Chris Finney





A person wearing a white protective suit and hood stands behind a dark metal grid structure. The background is a bright, overcast sky. The text "THANK YOU" is overlaid in large, white, serif capital letters.

THANK YOU

Set photos taken by ON SET Brad Frizzell