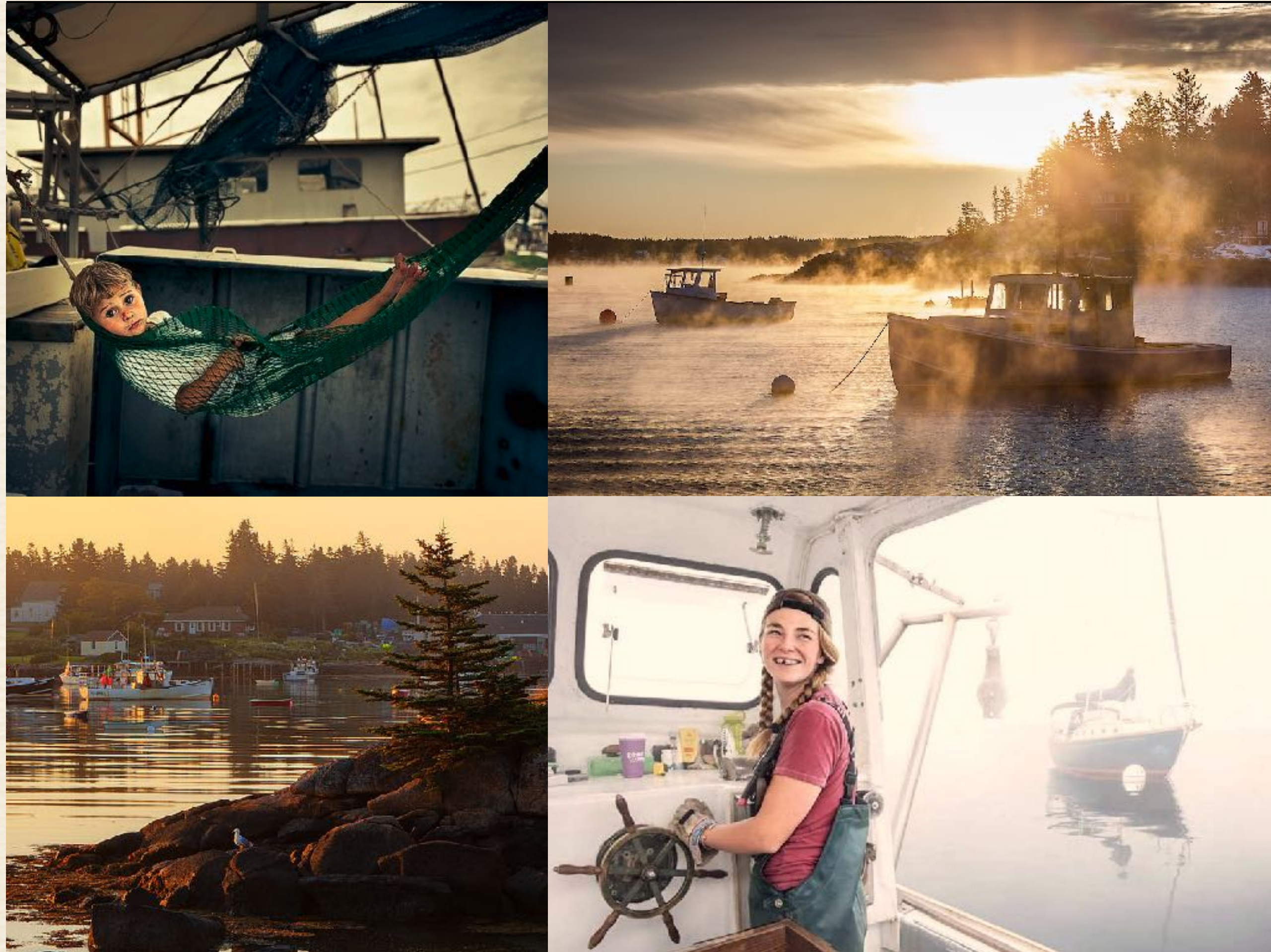


BLOW THE MAN DOWN

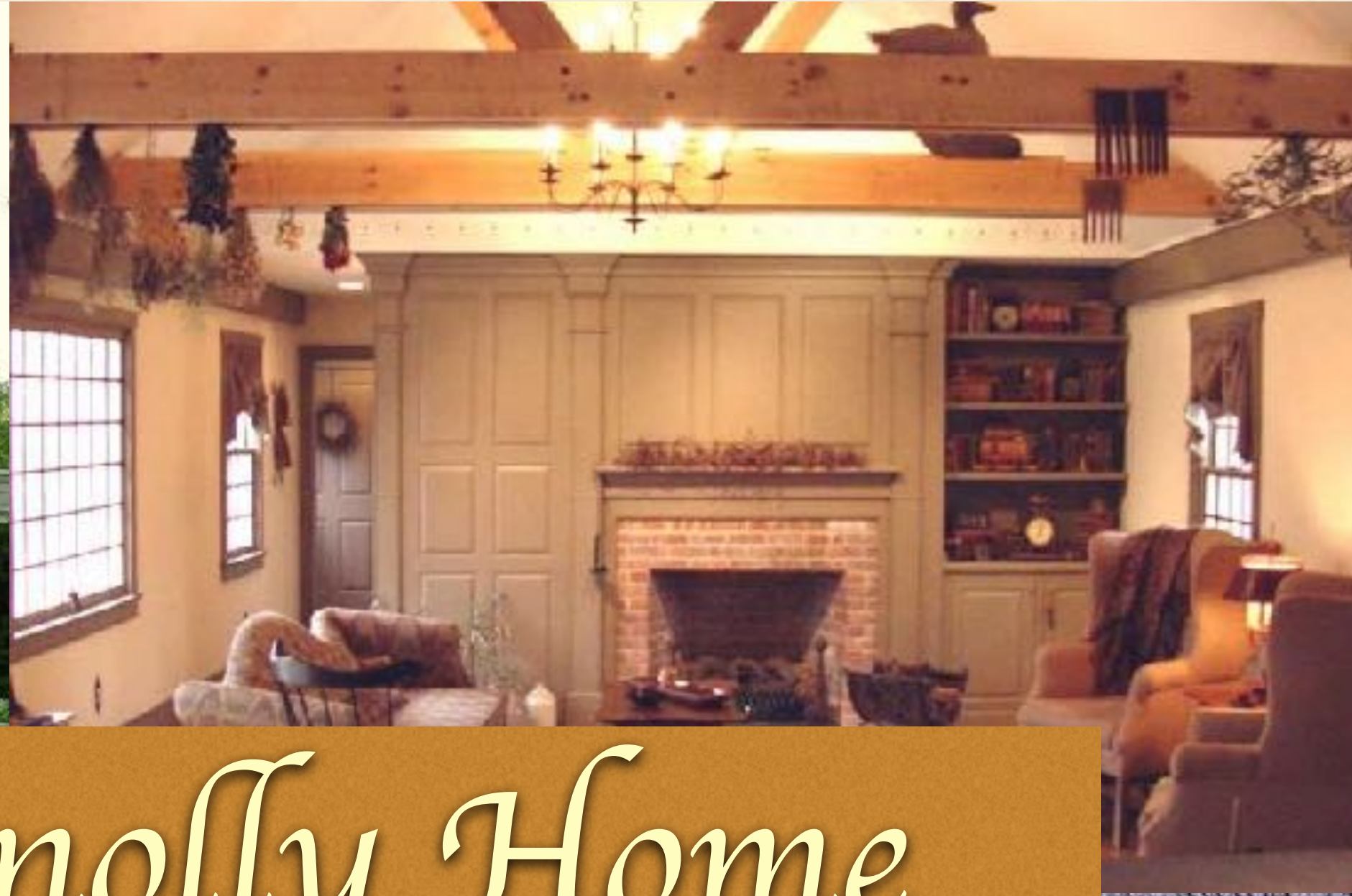


Art Direction, Design & Decoration for your consideration

With such limited resources, (19k budget and a 5 person Art/Set Dec/Props Dept) location & crew selection were key.
This is where I envisioned the story taking place.

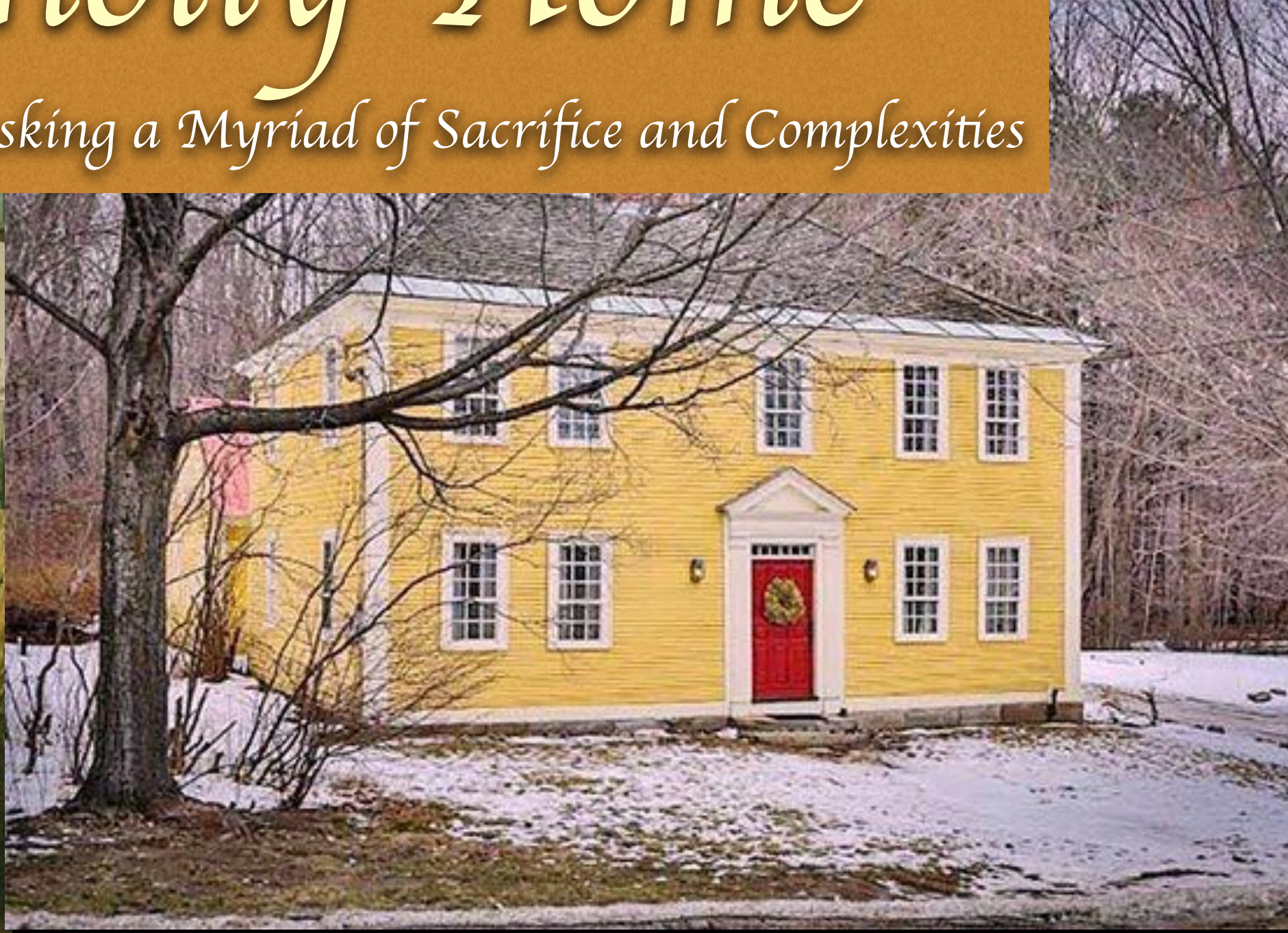
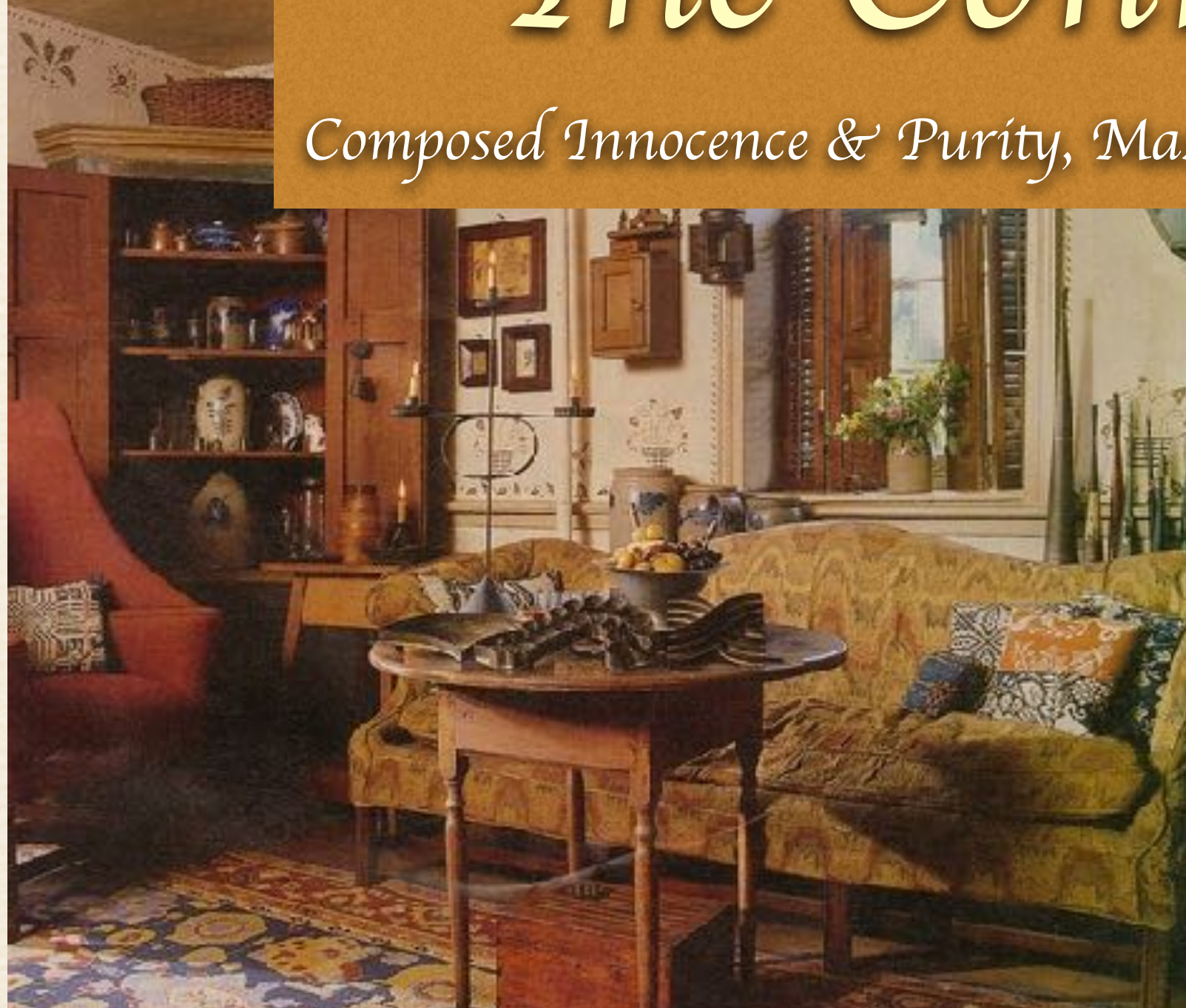


Lookbook
based on
the script



The Connolly Home

Composed Innocence & Purity, Masking a Myriad of Sacrifice and Complexities





*Hardworking Middle Class.
All they have is deserved & achieved
with a little elbow grease.
Nothing is taken fore granted.*



Details reflecting decisions made to elevate life:
Family achievements on display -
photos, trophies, ribbons
Artwork made by the girls when they were young
Sparse liquor cabinet
Heart warming Americana decor
Houseplants



1st generation flat screen TV
Classic 90's home stereo w/ 6 CD changer
Homemade Cd's - Billy Joel, Carole King
Cleaning products and Yankee candles
Christian symbols
Almond kitchen appliances
Tupperware
#1 MOM mug
Well organized collection of china & tchotchkes
Neatly kept personals - Coats, boots, belongings



Design that gives Mary Margret life





The Princess Priscilla





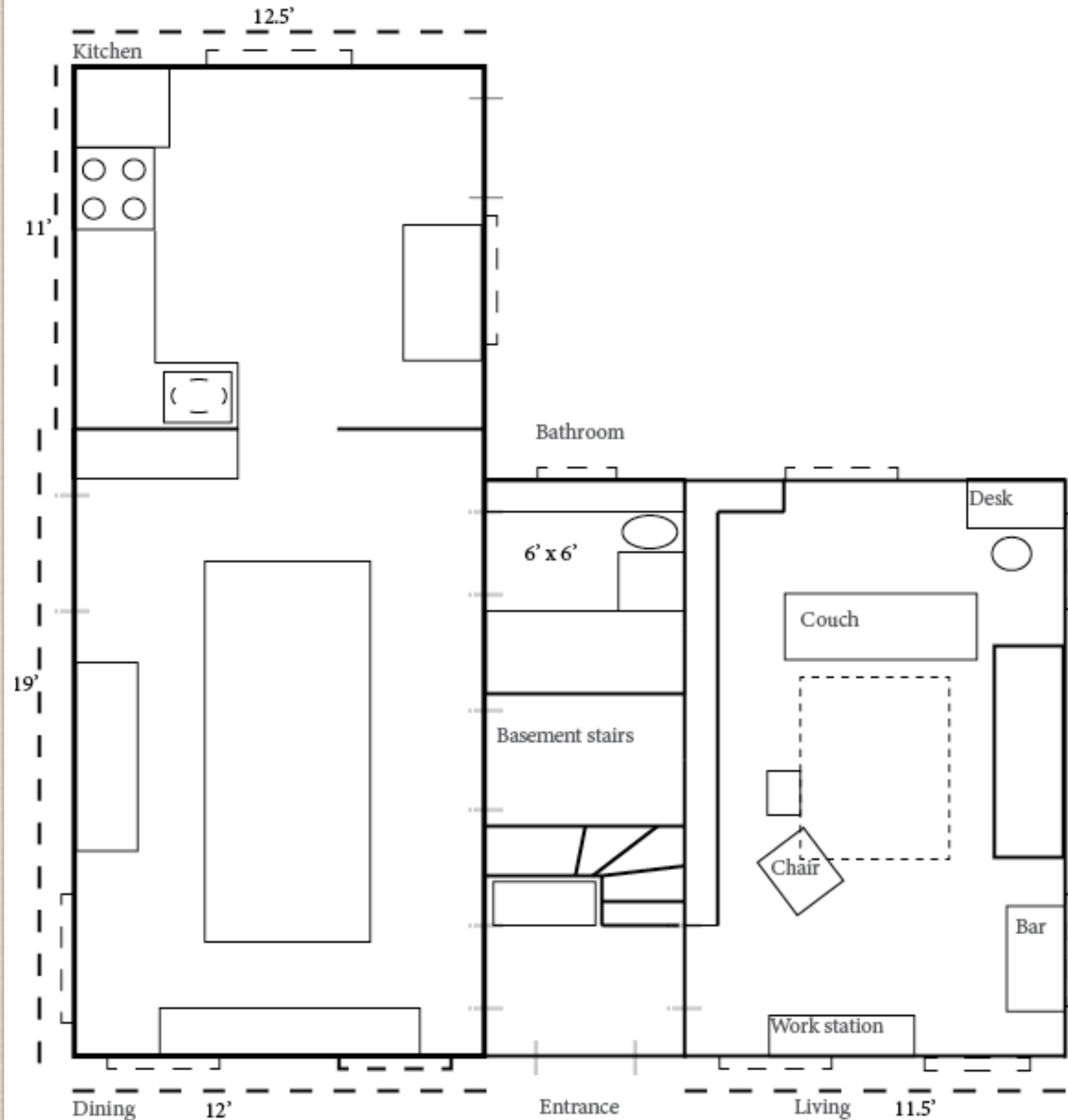
The Gamine Mary Beth



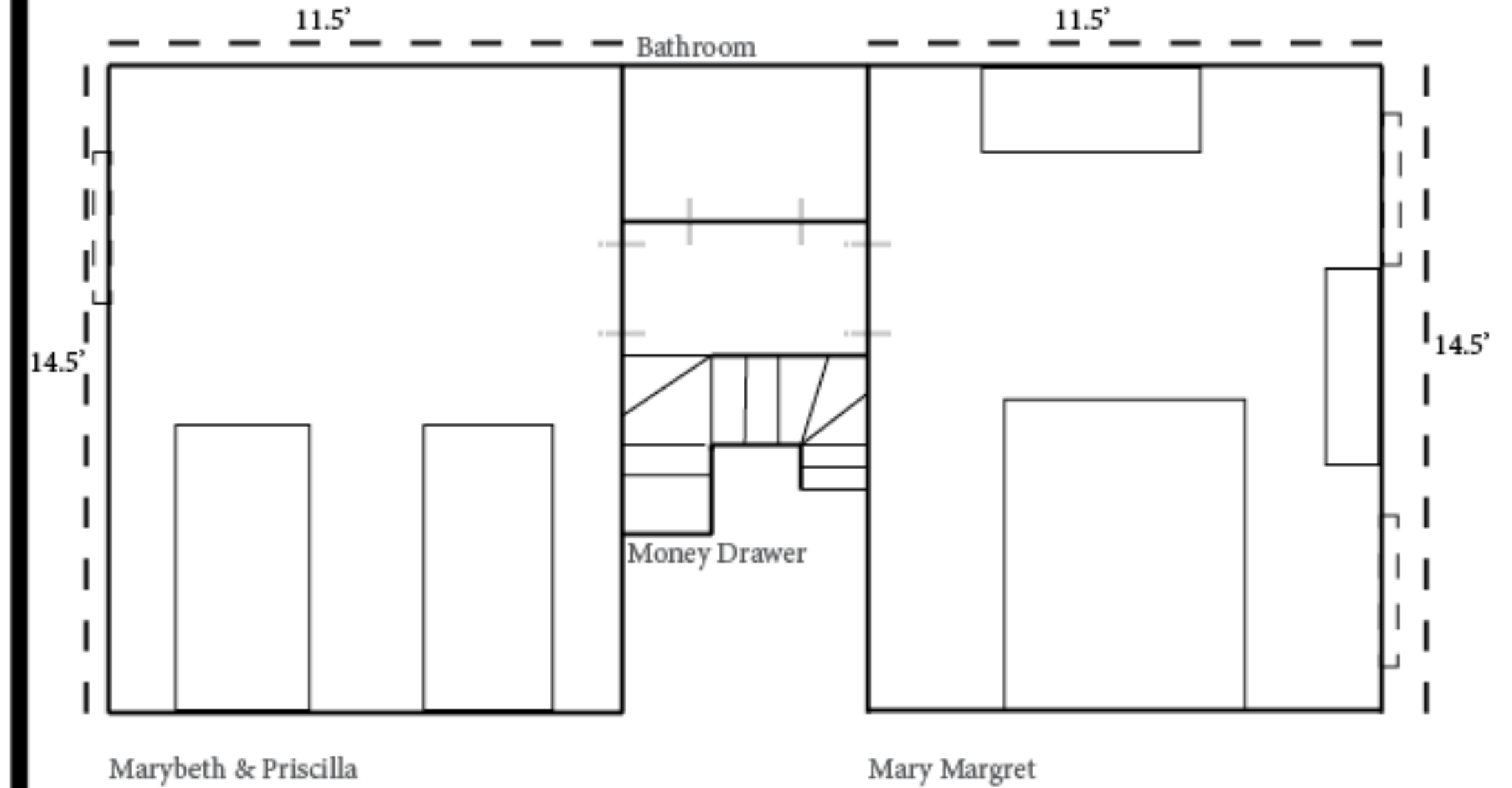
*For the good of our daughters,
for all womankind*

CONNOLLY HOME:

FIRST FLOOR



SECOND FLOOR



Set Stills





20.776 SHOOTER 180.0

EI 1600 ND 1.2 WB 4700 K -0.4 CO

M
D
OG
16



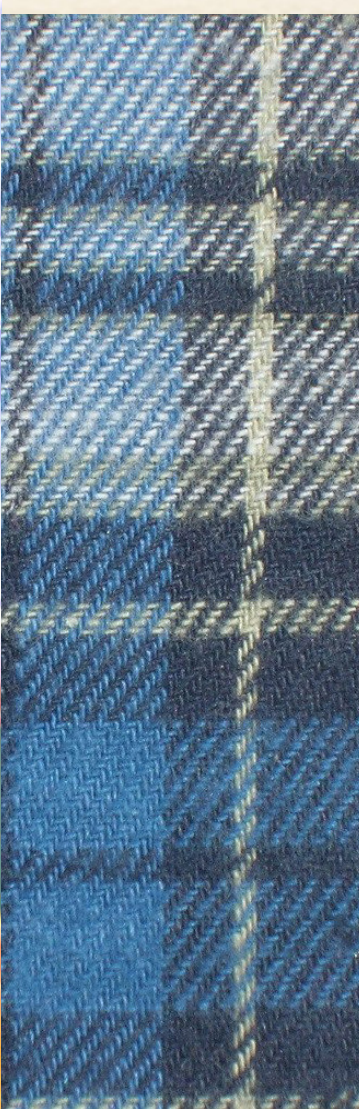
STBY

CARD

1:16 h

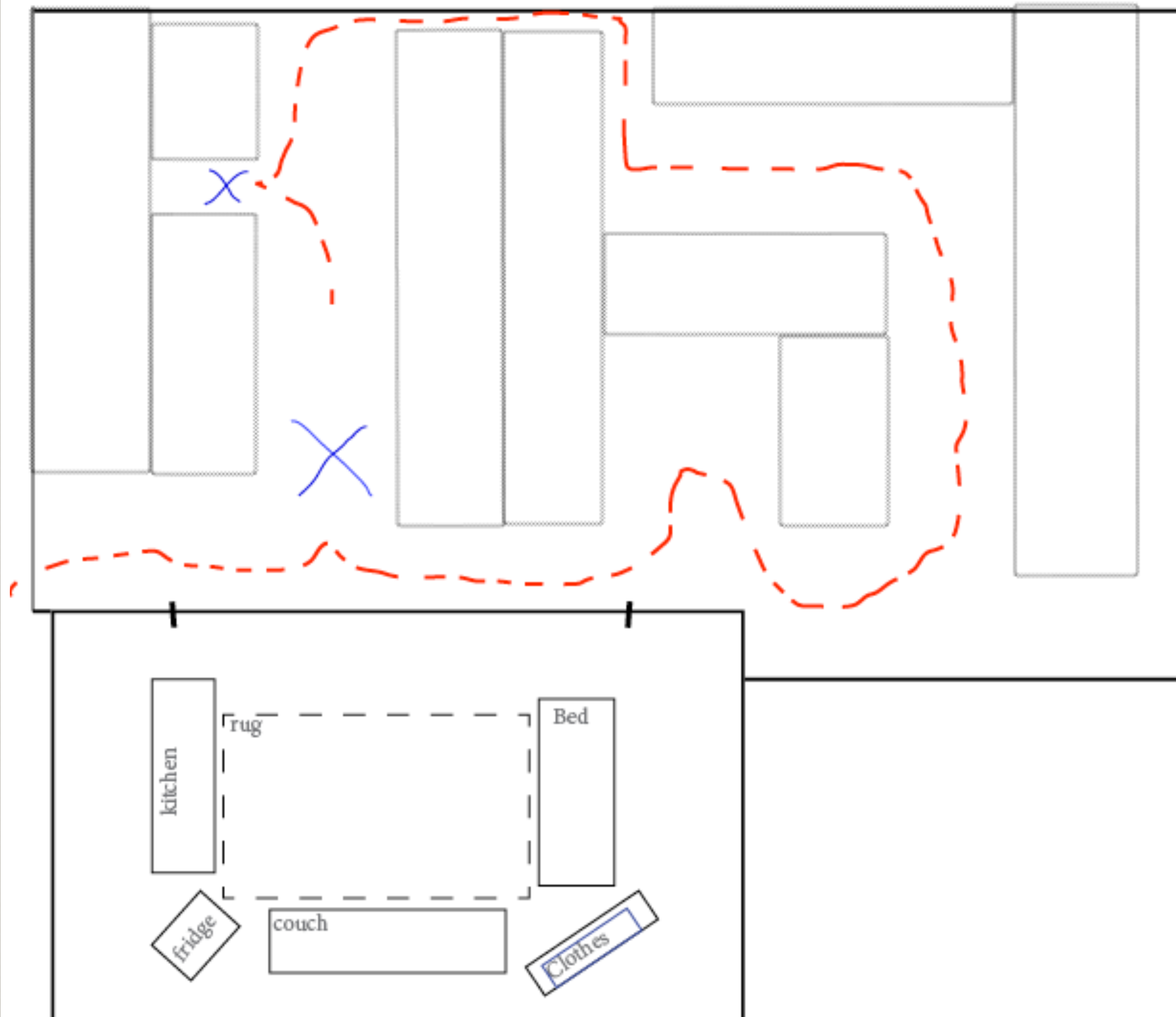
TC 12:14:35:21

Moodboard
based on
the location



BLOW THE MAN DOWN | Gorski's Shack

GORSKI'S:



Set Stills



Lookbook
based on
the script





*A Victorian New England home
haunted by the town's skeletons*

*Warm and Inviting,
yet Ominous and Eerie*





*A Soft Dusty veil
over the darkness of humanity*





Public Details:

Antique decor

Lit Fireplace

Doilies & Lace

Dusty Carpet

Vintage Stereo

Tapestries & Needlepoint

Full Bar w/ Crystal details

Wallpaper as old as the house

Fringed pillows & lampshades

Men's magazines (Car, Sport, Health)

An ancient guest book primarily blank,

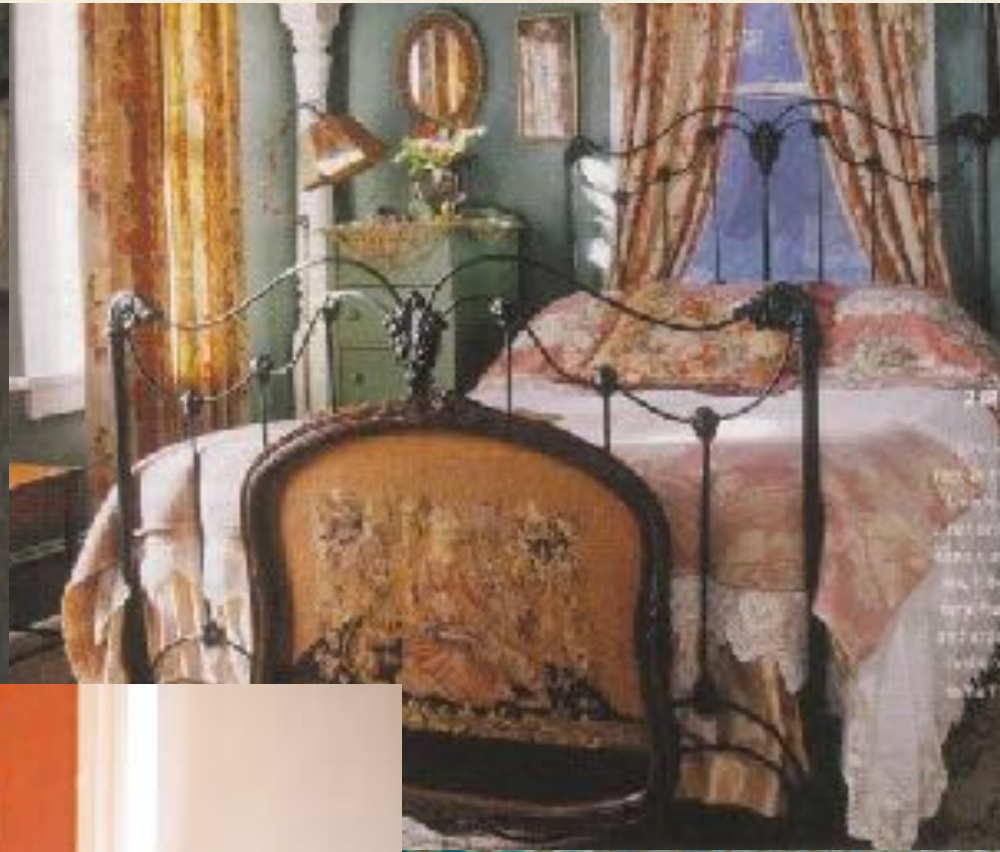
with some humorous aliases (Mickey Mouse 1979)

China cabinet with a collection of tea settings & plates



*Antique, timeless style
met with some small modern updates,
largely unchanged for decades*





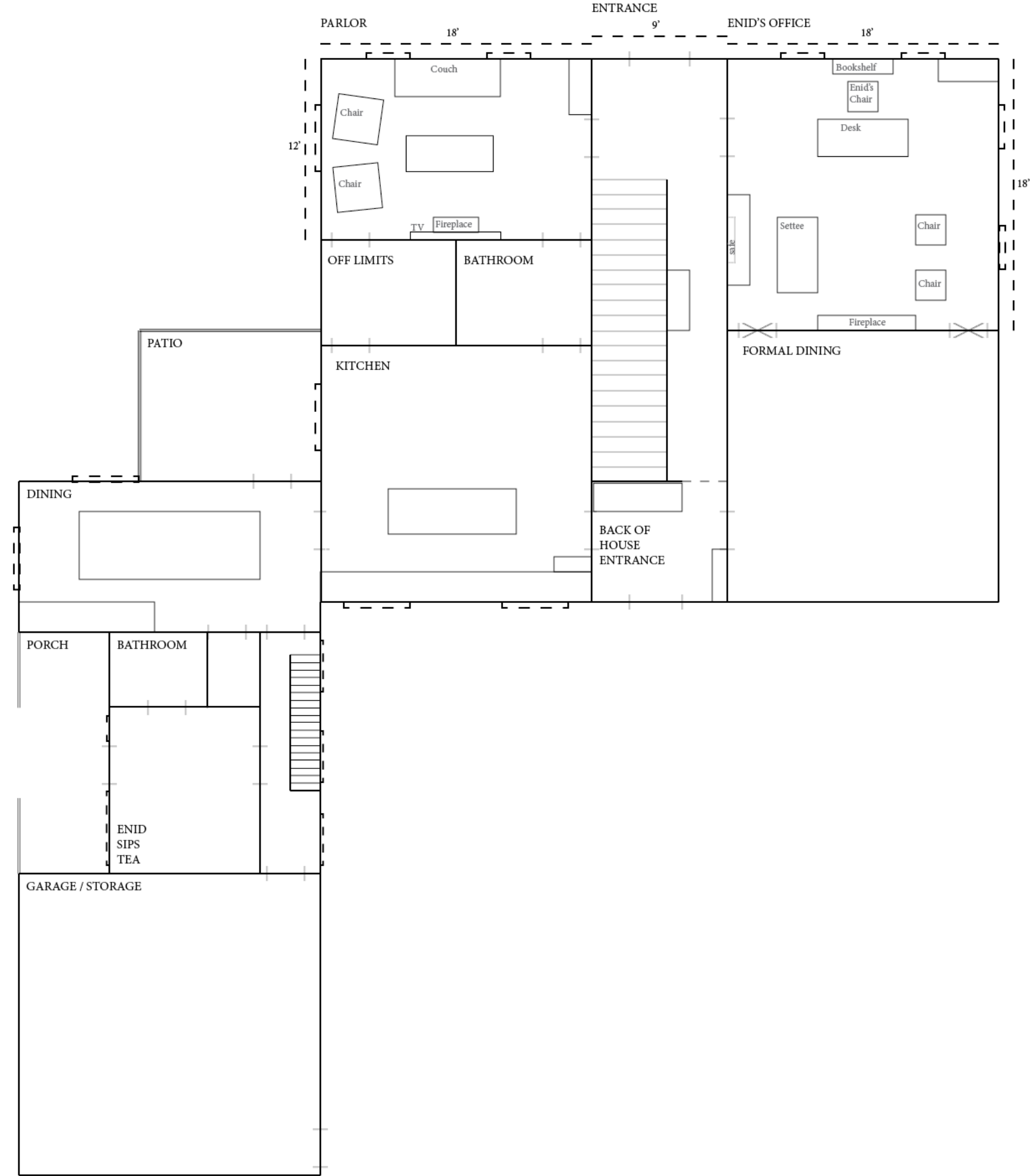
Private Details:
Porcelain bowls filled w/ condoms
Antique fans & Telephones
Vintage clocks
Fake florals
Modern necessities (Kleenex, air freshener, personals)
Small Flat Screen TV



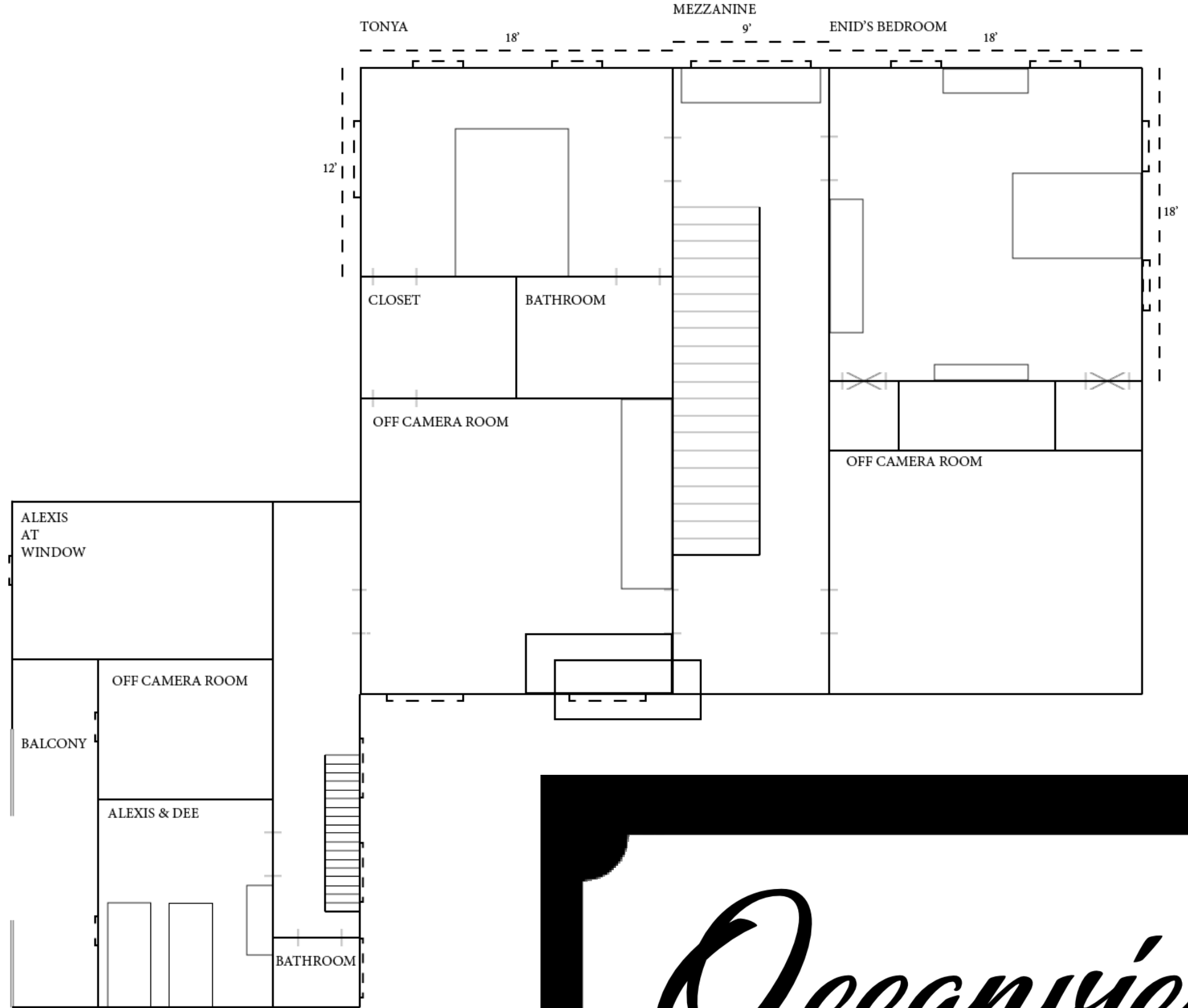
*Strong women
with generations of heavy baggage*

OCEANVIEW:

FIRST FLOOR



SECOND FLOOR



Oceanview
Bed and Breakfast

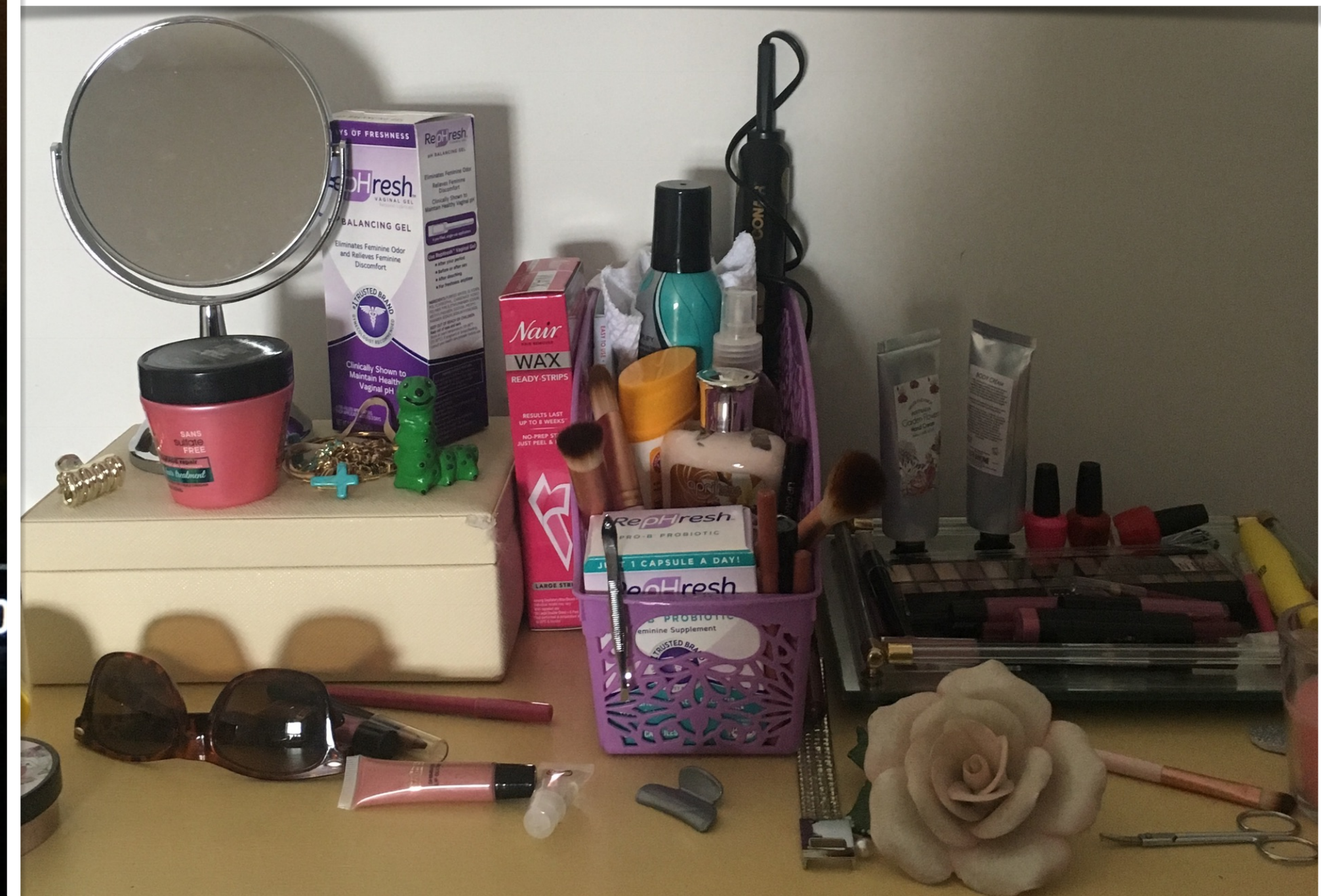
Set Stills



S 23.976 SHUTTER 180.0 EI 1600 ND 0.6 WB 4840 K +0.5

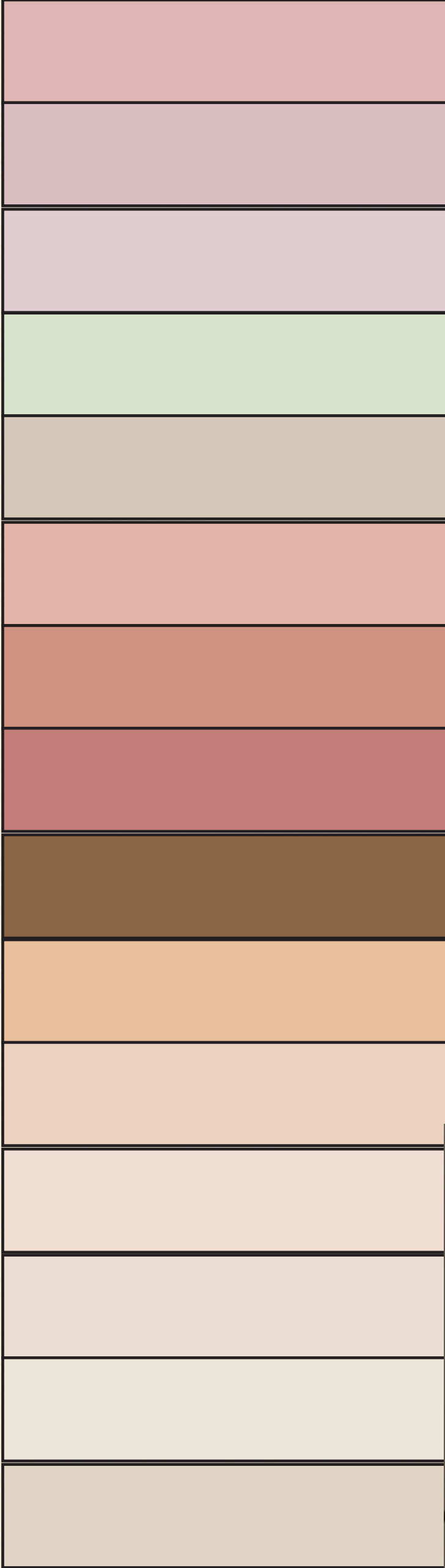


BAT 26.2V A052 C000 ●STBY CARD 1:16 h TC 21:45:51:00





Moodboard
based on
the location



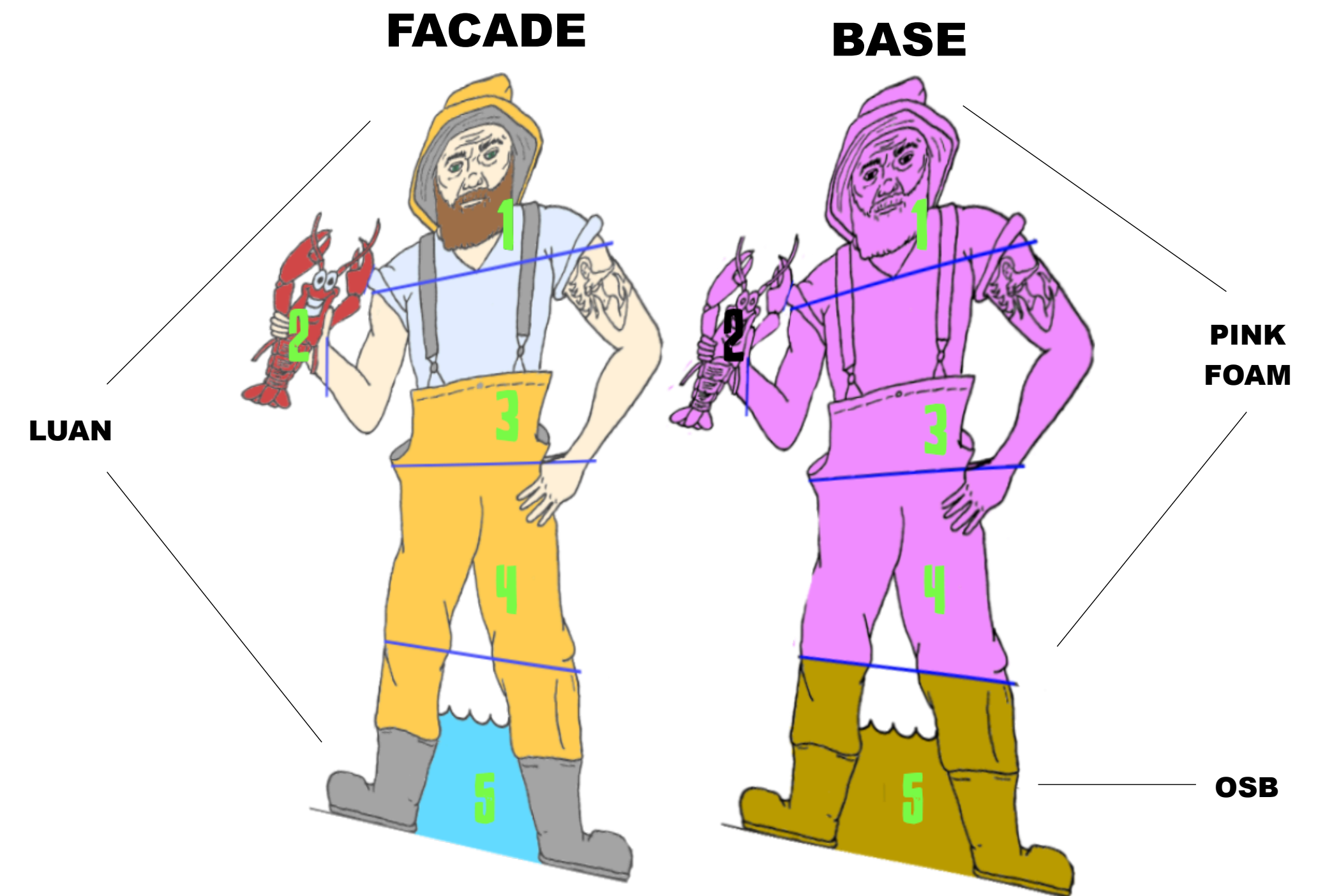
BLOW THE MAN DOWN | Susie Gallagher

Set Stills



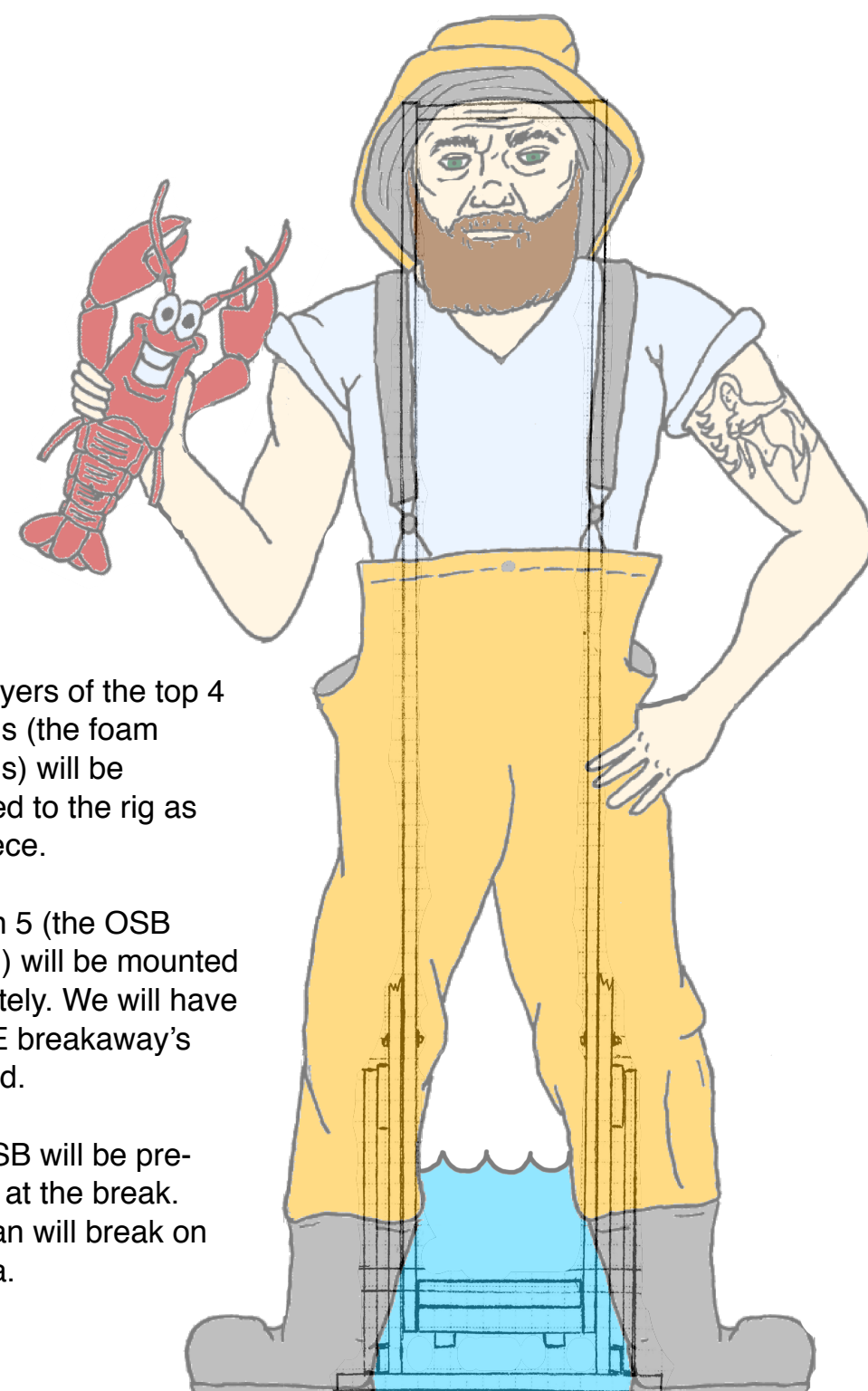
The Rise & Collapse of Captain Dick

CAPTAIN DICK



"Captain Dick" is 2 layers, a FACADE and a BASE, adhered together with a 2 part epoxy. The structure is assembled from 5 sections (separated above by the blue lines).

The FACADE is painted Luan. The bottom section of the base, where the break happens, will be OSB (particle board). The top will be 1" thick pink foam. #saftteyfirst

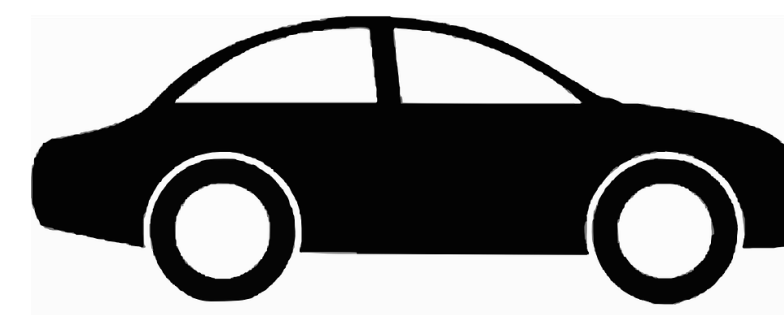
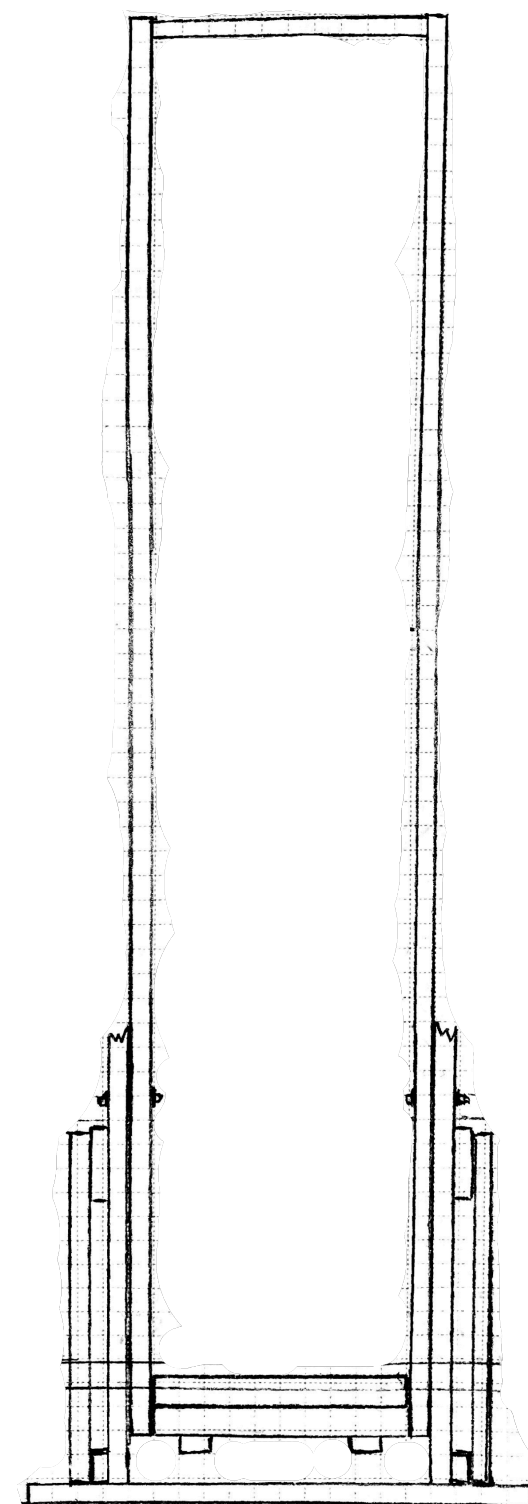


16ft.

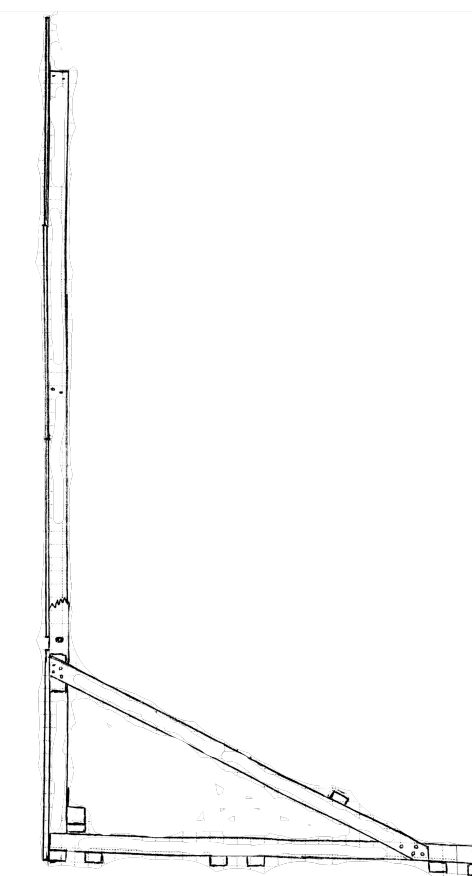
Both layers of the top 4 sections (the foam sections) will be mounted to the rig as one piece.

Section 5 (the OSB section) will be mounted separately. We will have THREE breakaway's prepped.

The OSB will be pre-scored at the break. The luan will break on camera.



The Break will be on a hinge, to control speed an impact.

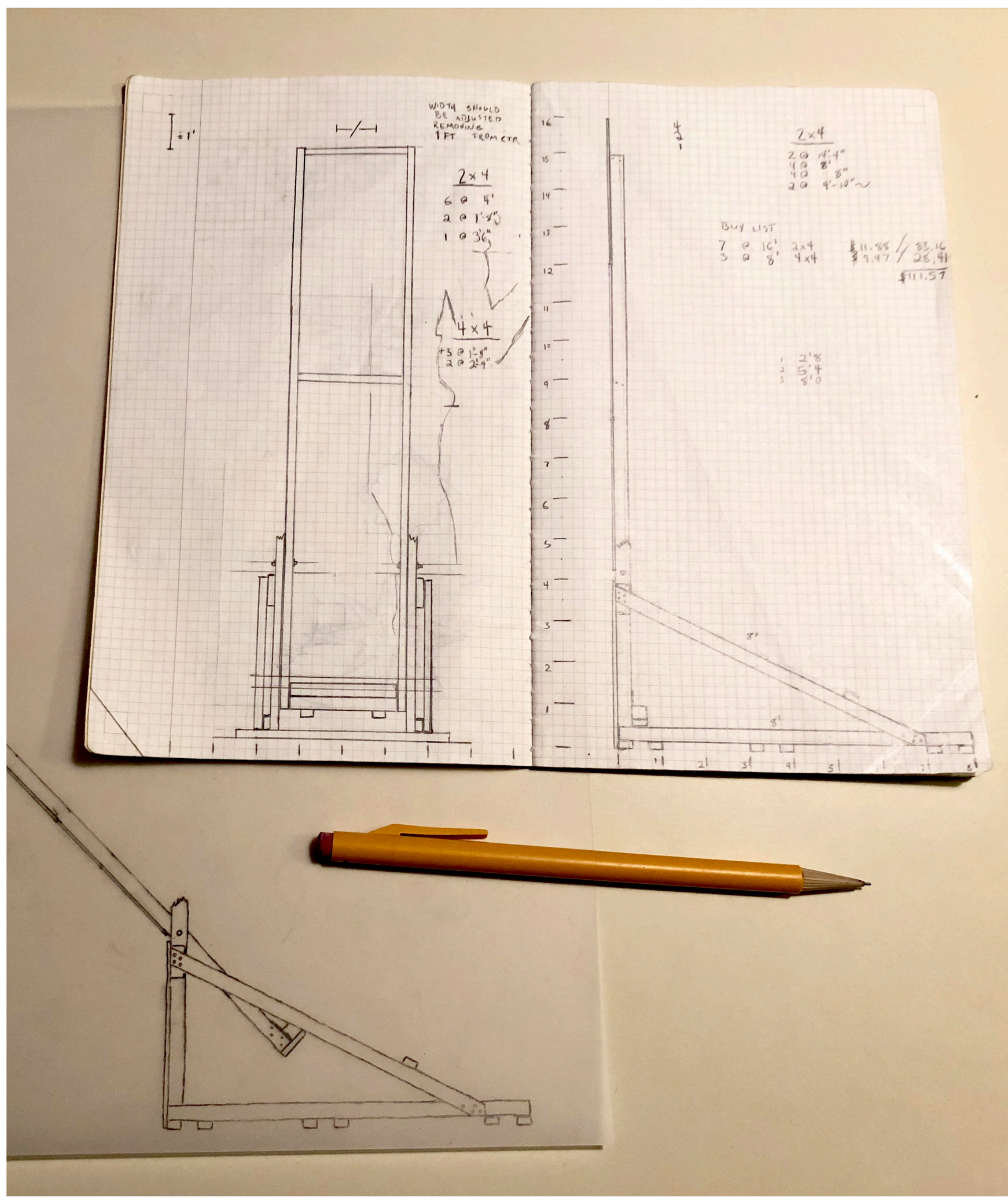
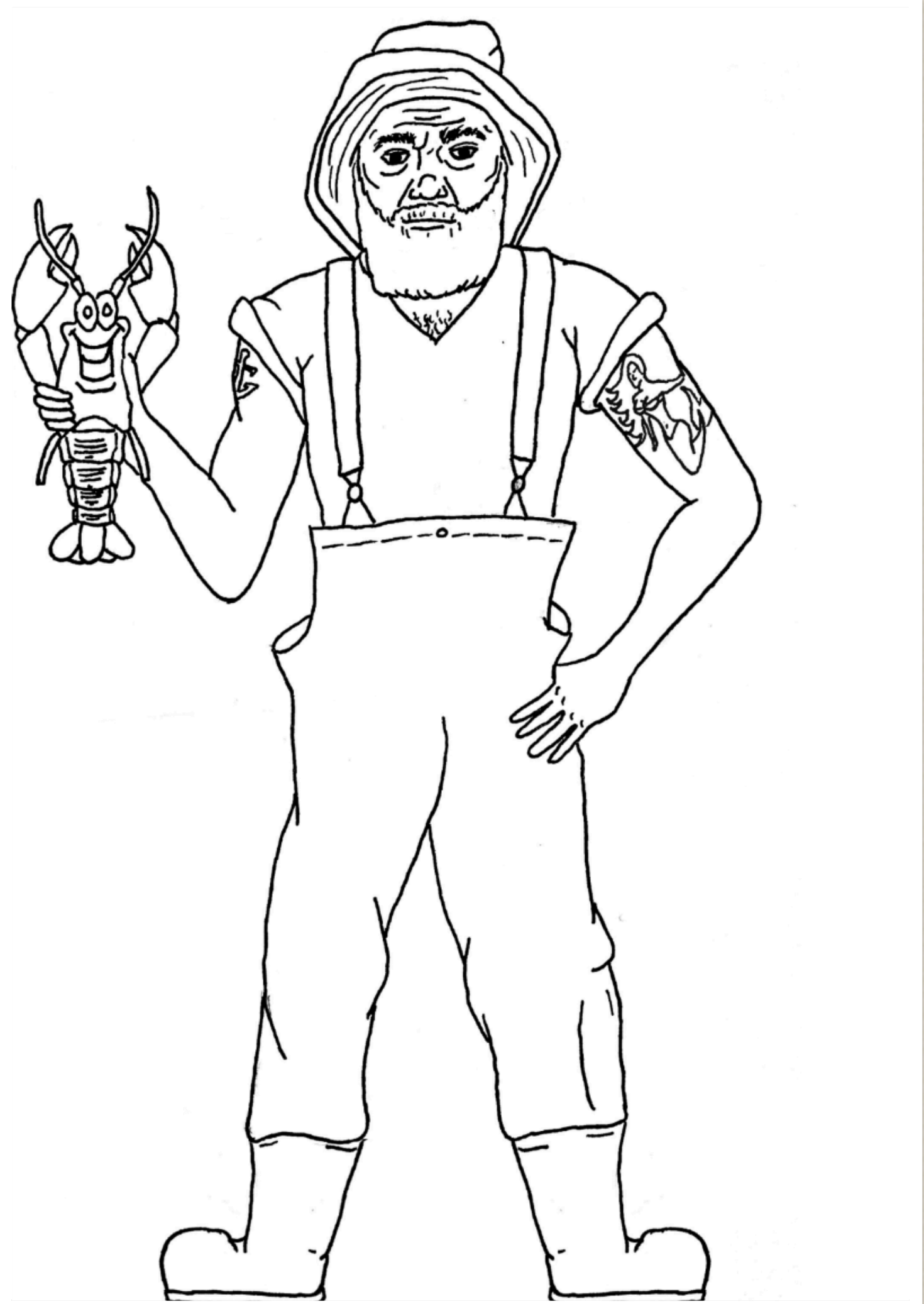


The entire rig will be anchored with 2 jacks, sand bags, cinder blocks, and a safety chain that will be manually control.

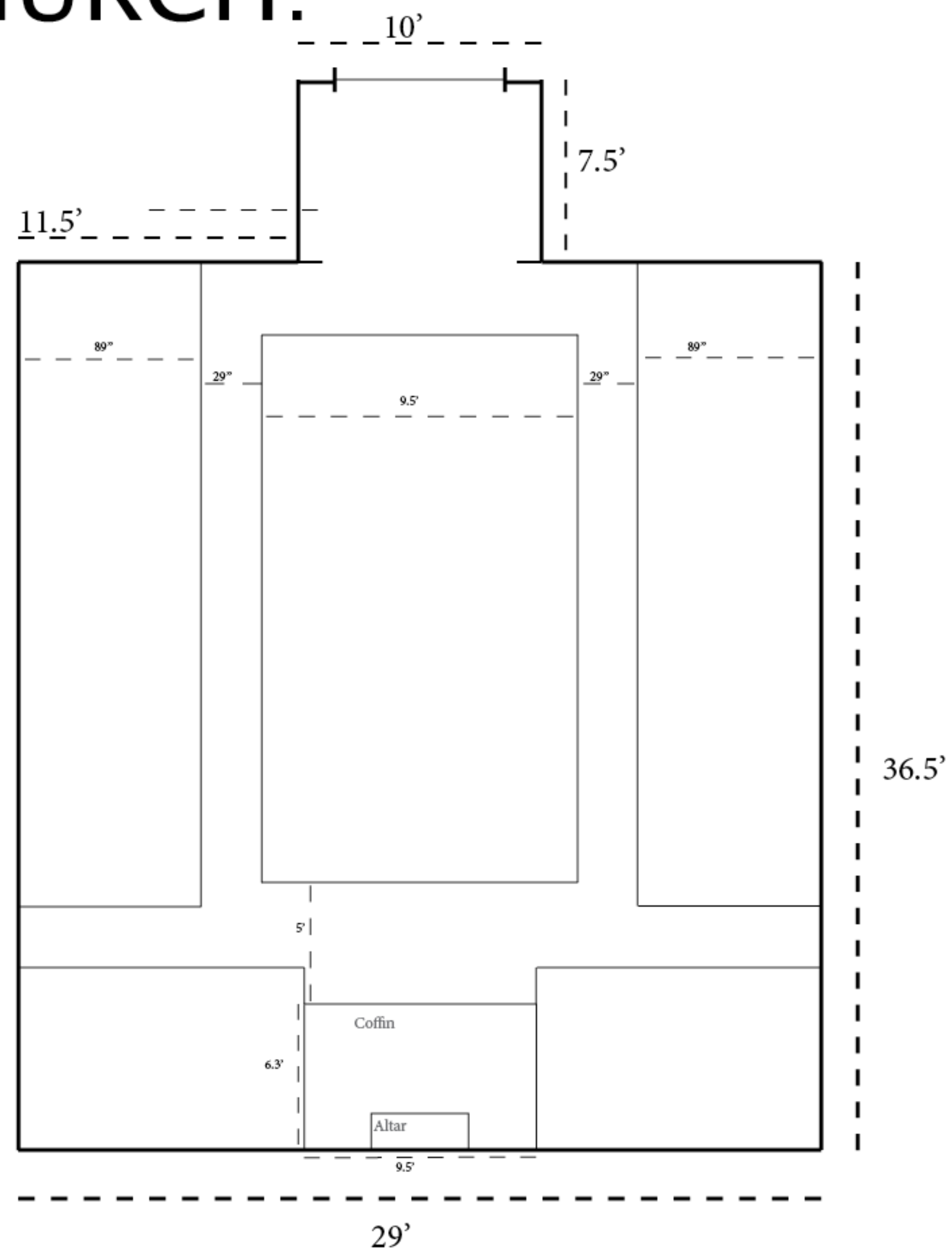


NOTES

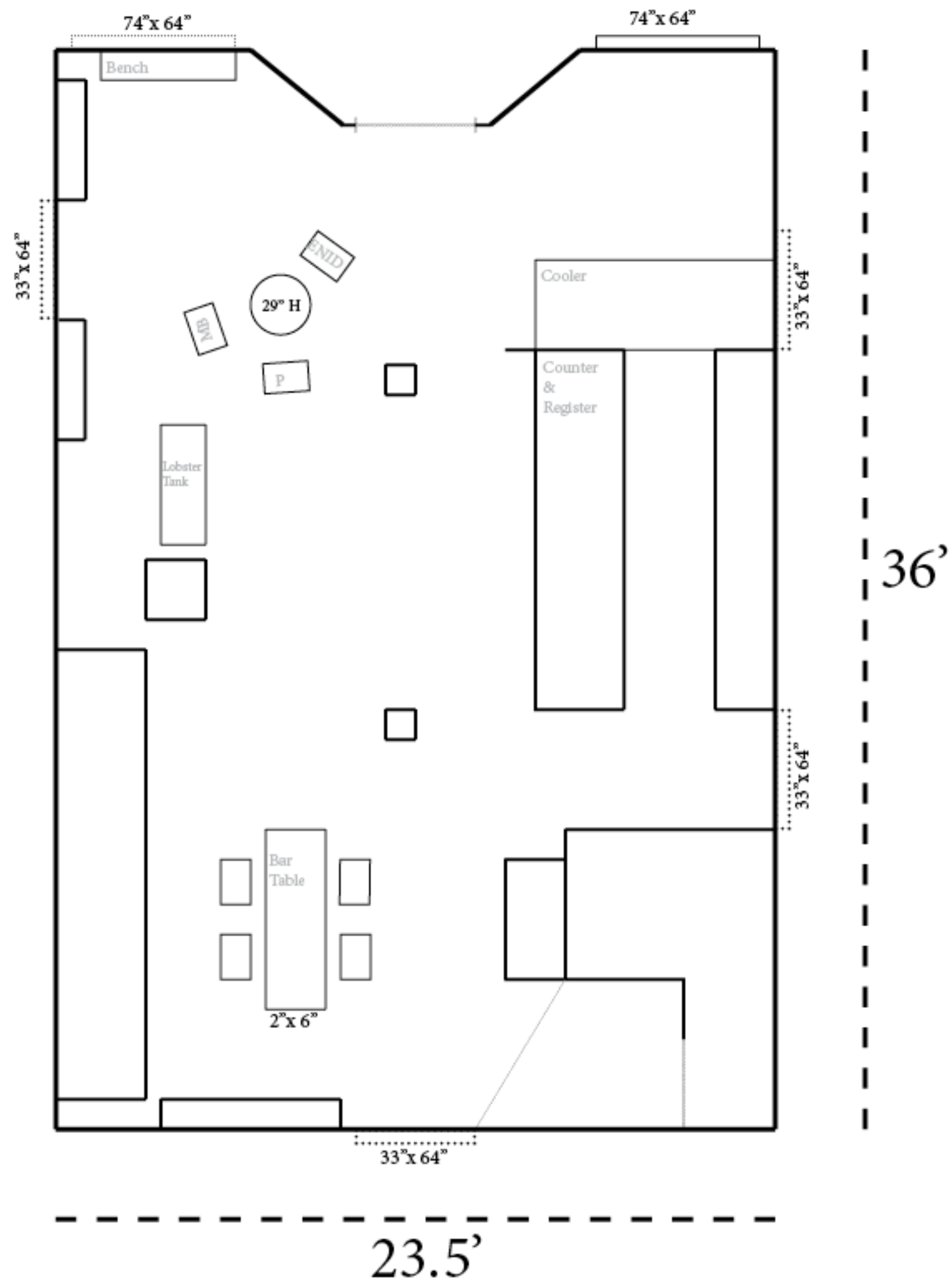
- We will switch to the wooden Captain Dick on for the shot where Marybeth and Gorski flea the scene in reverse.
- We should shoot the establishing shot before we film the crash.
- The time that Captain Dick is up should be minimized.



CHURCH:



CONNOLLY FISH:





Deeper into Easter Cove



Thank you for your visiting!

