

The Willoughbys

NETFLIX
BRON

For your ADG consideration
Excellence in PRODUCTION DESIGN
ANIMATED FILM

Kyle McQueen, Production Designer

FOYER CONCEPT



“GREAT WALL” PAINTINGS



IN FILM



“WILLOUGHBY HOUSE” CONCEPT ART



“WILLOUGHBY HOUSE” DESIGN



“WILLOUGHBY HOUSE” PLANT AND GATE DESIGN



EARLY ARCHITECTURAL CONCEPTS

The Willoughbys Kid's bedroom concept

Sleeping Area

- kids all share the same space
- soft a lush
- throw pillows and rugs
- lights
- terrariums (?)
- Jane has heavy influence here

Library

- lots of books
- rolling ladders allow kids to traverse the room easily
- hidden area behind the shelves. Leads to dumbwaiter allowing kids to move through the house unseen



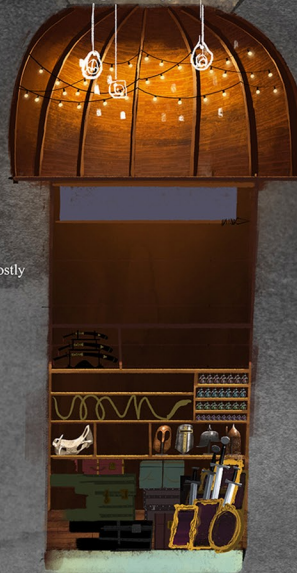
East Wall



Tools and Weapons

- Shared area by all, but mostly dominated by Tim and Barnabys
- Twins build and tinker
- Tim keeps "inspiration" (weapons and helmets and artifacts of greatness)
- World map

South Wall



West Wall



Jane's Influence

- Jane has influence all over the room, but mostly on the northwall
- uses attic objects to grow plants in
- poetry and quotes tacked up on little bits of paper all over the room

The Willoughbys

Architectural shapes

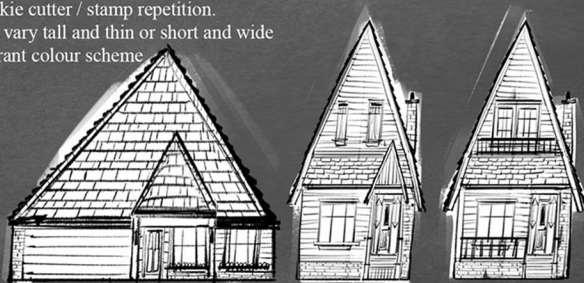
Willoughby House

- fluid, playful shapes
- victorian character home
- mix of shapes / straights and curves
- iconic silhouette
- eclectic mix of materials and details
- feels light in it's weight
- blended with nature
- organic in its construction



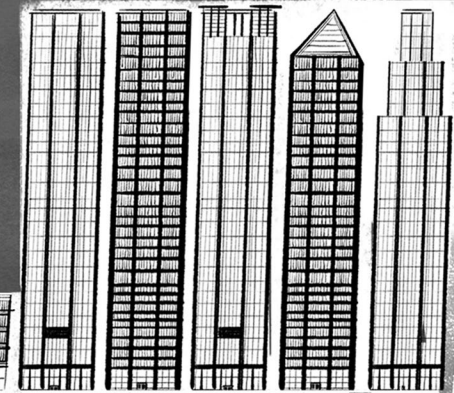
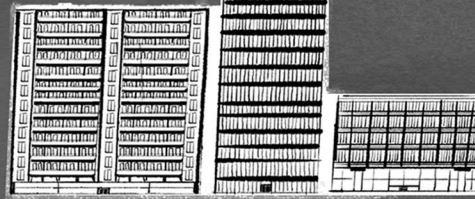
Suburban Residential Homes

- simple geometric shapes.
- simple structural details
- can populate suburb with the same house with subtle detail variants.
- cookie cutter / stamp repetition.
- can vary tall and thin or short and wide
- vibrant colour scheme



City Buildings

- simple, graphic shapes with solid, heavy / dense details
- can populate a city with a few key buildings and subtle variations
- more rigid lines than Willoughby house. Horizontals and verticals.
- reflections in windows of surrounding buildings can add to the density and overlap.



City Residential Homes

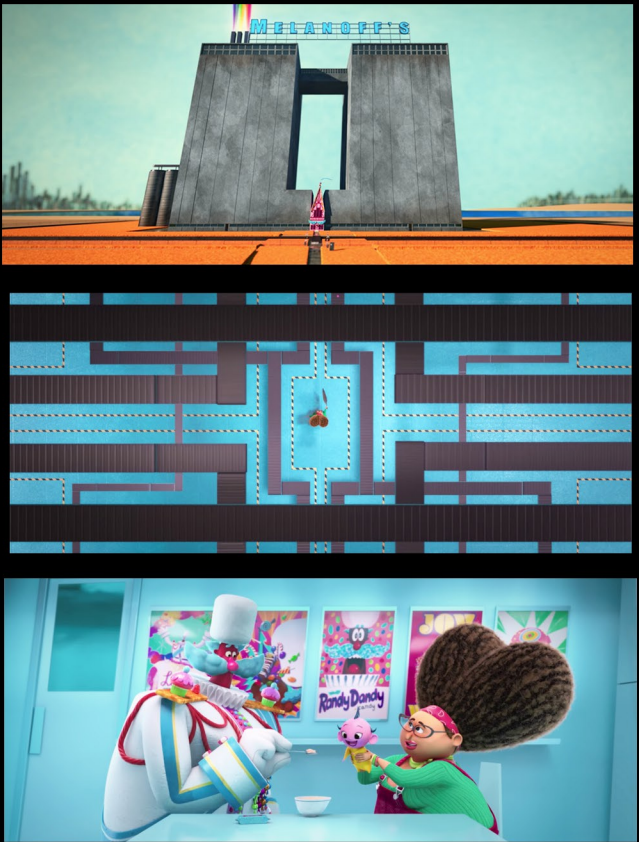
- simple, minimalist design
- no frills or character detail
- crowded and overlapping geometric shapes
- retail and residential mix
- blatant repetition with colour being the main variation



“MELANOFF FACTORY” DESIGN



IN FILM



“MELANOFF FACTORY” INTERIOR COLOR KEYS



“UNCLIMBABLE ALP” CONCEPT



IN FILM



FULL COLOR SCRIPT



COLOR SCRIPT SELECTIONS



IN FILM TRANSLATION



EARLY CONCEPT ART



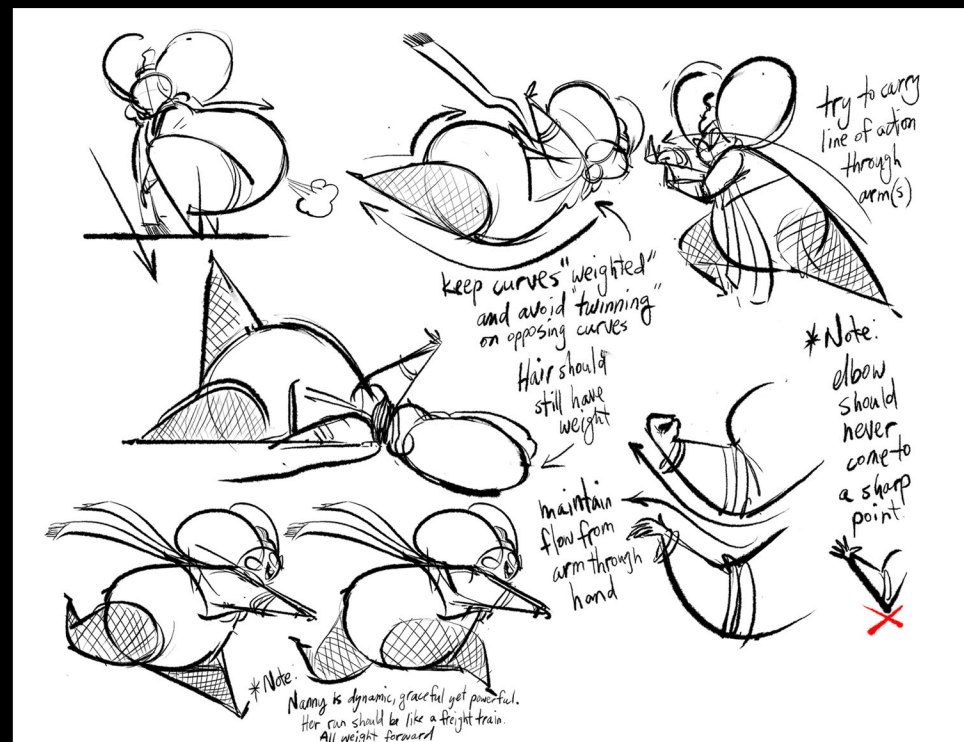
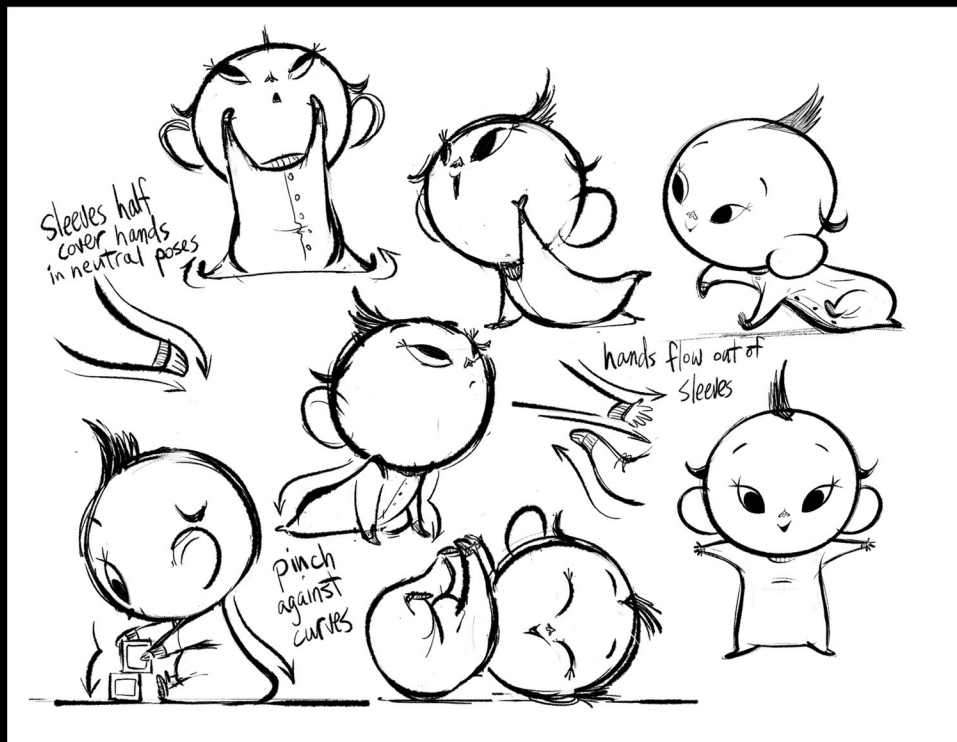
"FATHER" EARLY CHARACTER DESIGN AND FINAL TEXTURE PAINT



"COMMANDER MELANOFF" EARLY CHARACTER DESIGN AND FINAL TEXTURE PAINT



ANIMATION POSING GUIDES



EARLY CHARACTER DESIGN

