



THE MIDNIGHT SKY

DESIGN BRIEF:

The Midnight Sky follows the story of a terminally ill astrophysicist with one last task to complete during the final days of human life on earth.

Set approximately twenty-five years in the future, *The Midnight Sky* is a poetic meditation on life, death and redemption, primarily taking place in an Arctic research station, a spacecraft returning from the moons of Jupiter, and an unforgiving frozen landscape during a perilous journey across the top of the world. The guiding aesthetic for the design of the film is to realistically address the look of near future technology while creating imagery that reflects the inner life of its characters and the fragility of life.

Jim Bissell
Helen Jarvis
Nic Pallace
Tim Browning
Claire Fleming
Felicity Hickson
Greg Fangeaux
Pierre Farinole
Sarah Priest
Romain Hemeray
Johanna Sansom
Clara Gomez
Damian Watts
Stevo Bedford
Patrick Faulwetter
Temple Clark
Jan Clark
Dan Sweetman
Mark Dodwell
John Adkins
Alfredo Lupo
Tom Coxon
Sarah Smith
Gemma Kingsley
Chris Tooth
John Bush
Maudie Andrews
Johnathan Oganhaffen

PRODUCTION DESIGNER
SUPERVISING ART DIRECTOR
SENIOR ART DIRECTOR
ART DIRECTOR
ART DIRECTOR
ART DIRECTOR - *graphics*
ART DIRECTOR
STANDBY ART DIRECTOR
ASST ART DIRECTOR
ASST ART DIRECTOR
ASST ART DIRECTOR
ASST ART DIRECTOR
CONCEPT ARTIST
CONCEPT ARTIST
STORYBOARD ARTIST
STORYBOARD ARTIST
STORYBOARD ARTIST
MODEL MAKER
DRAUGHTPERSON
DRAUGHTPERSON
JUNIOR DRAUGHTPERSON
JUNIOR DRAUGHTPERSON
GRAPHICS DESIGNER
GRAPHICS DESIGNER
SET DECORATOR
SET DECORATOR - *Locations*
VFX ART DIRECTOR

BARBEAUX OBSERVATORY

This Arctic research station was designed to reflect the career of the protagonist referencing contemporary Antarctic research station and global observatory design



ARCTIC RESEARCH STATION DESIGN RENDERINGS





The entrance to the station as well as an antenna module were built adjacent to the Vatnajökull Glacier in Iceland using VFX set extensions for wide shots. Snow did not arrive as anticipated in October, so had to be added to some of the set extensions.

All interiors were built on stages at Shepperton Studios in London.

ARCTIC RESEARCH STATION ANTENNA UNIT- Set illustration

ARCTIC RESEARCH STATION ANTENNA UNIT- Set Photo (antenna and snow added in post)

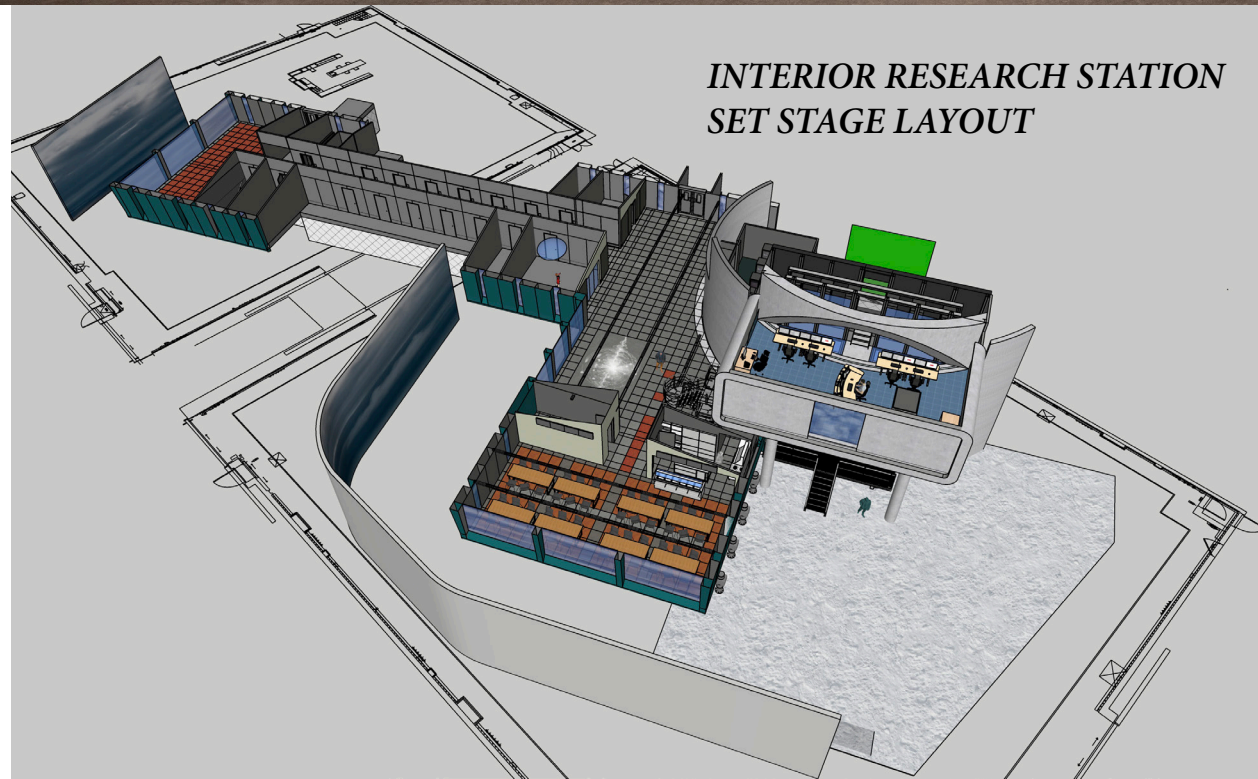




INTERIOR RESEARCH STATION SET STILL

This set at Shepperton was surrounded by LED screens which displayed plate photography shot in Iceland. These screens, along with built-in lighting, lit the set and allowed for complex reflection and refraction of light on reflective surfaces.

Modular design and unistructural elements were used to create a near future look as well as to reflect the analytical inner life of a physicist reconciling with his emotional self.



INTERIOR RESEARCH STATION SET STAGE LAYOUT



INTERIOR RESEARCH STATION SET STILL

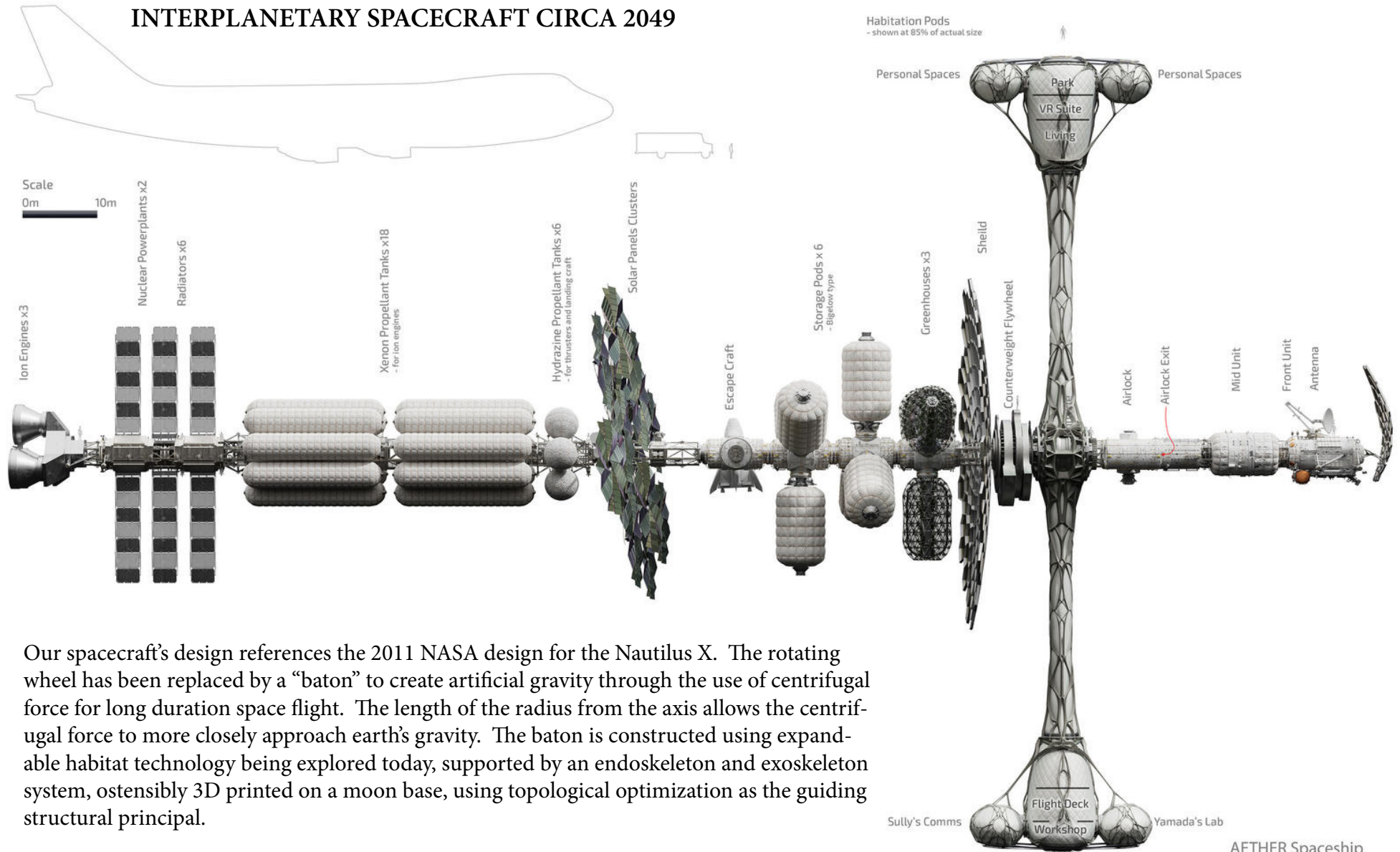


INTERIOR RESEARCH STATION - Concept Painting



INT. RESEARCH STATION - Control Room illustration

INTERPLANETARY SPACECRAFT CIRCA 2049



Our spacecraft's design references the 2011 NASA design for the Nautilus X. The rotating wheel has been replaced by a "baton" to create artificial gravity through the use of centrifugal force for long duration space flight. The length of the radius from the axis allows the centrifugal force to more closely approach earth's gravity. The baton is constructed using expandable habitat technology being explored today, supported by an endoskeleton and exoskeleton system, ostensibly 3D printed on a moon base, using topological optimization as the guiding structural principal.

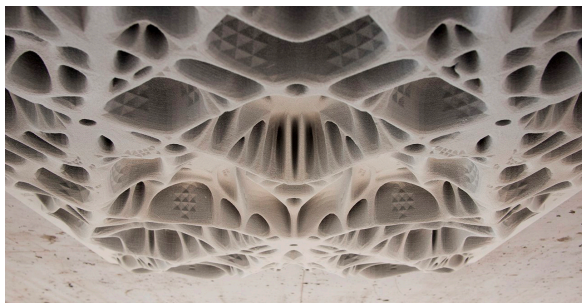
The endo and exo skeletons also make minute adjustments to compensate for the shifting mass of the astronauts as they move through the habitat so as not to effect navigation.

The central shaft is low-tech; there is a dumbwaiter to help transport supplies and parts from the storage containers, but the astronauts "commute" from their living space to working spaces on the other end of the baton by climbing to the weightless center and back into the centrifugal force of the other side.

AETHER Spaceship
Elevation
3 October 2019



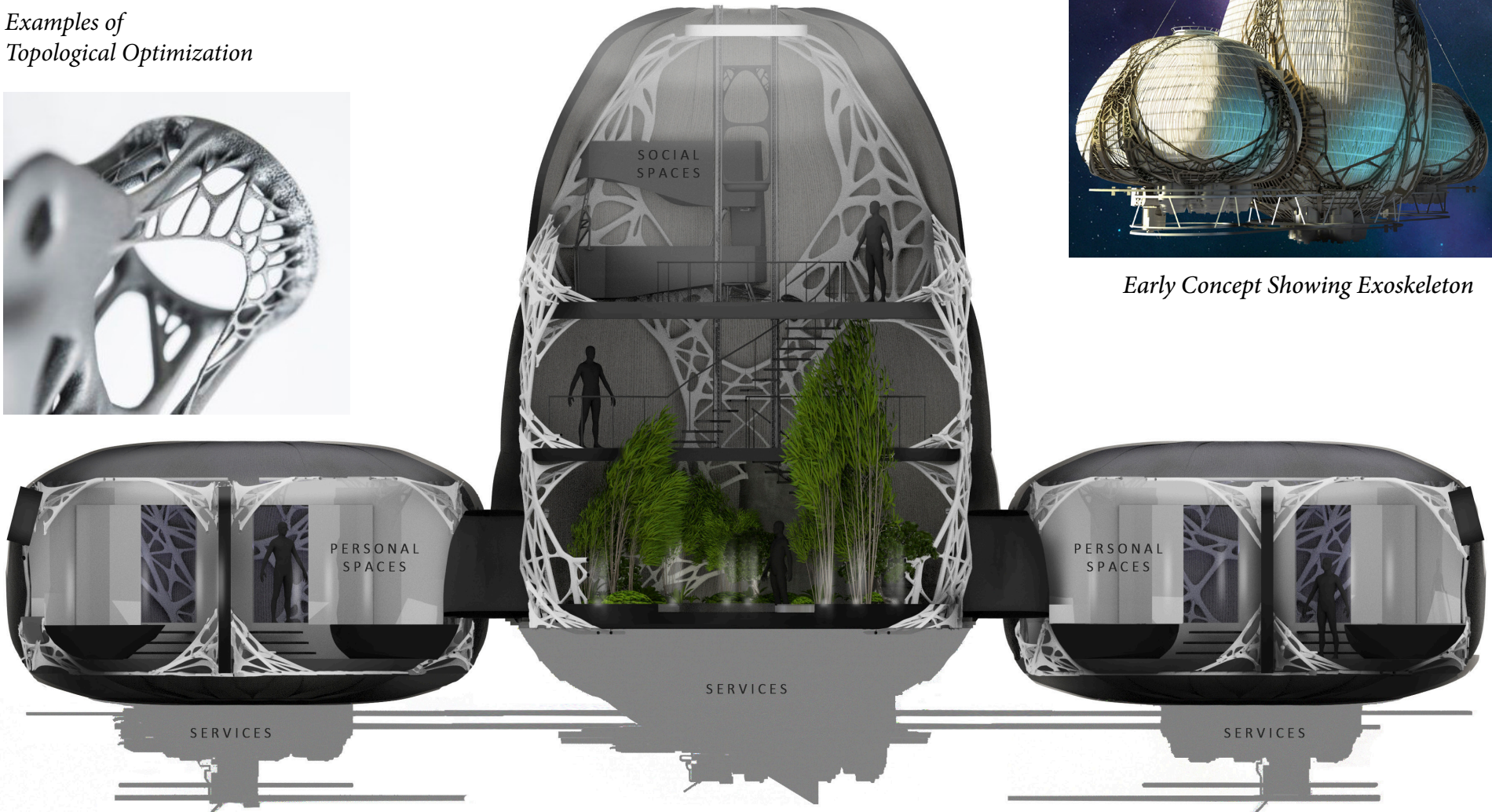
AETHER
Final Spacecraft Design



*Examples of
Topological Optimization*

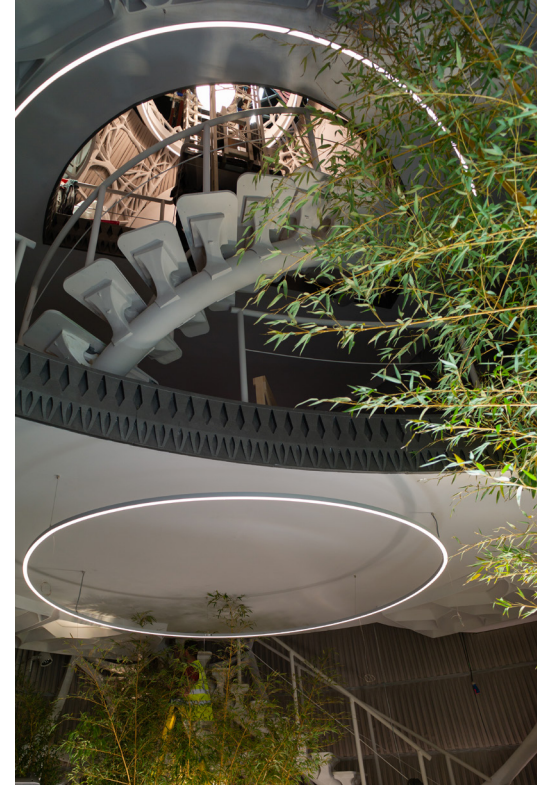


Early Concept Showing Exoskeleton



Schematic of "Little Earth" Endoskeleton

The crew's habitat: a whirling bag of gas spiraling through space.



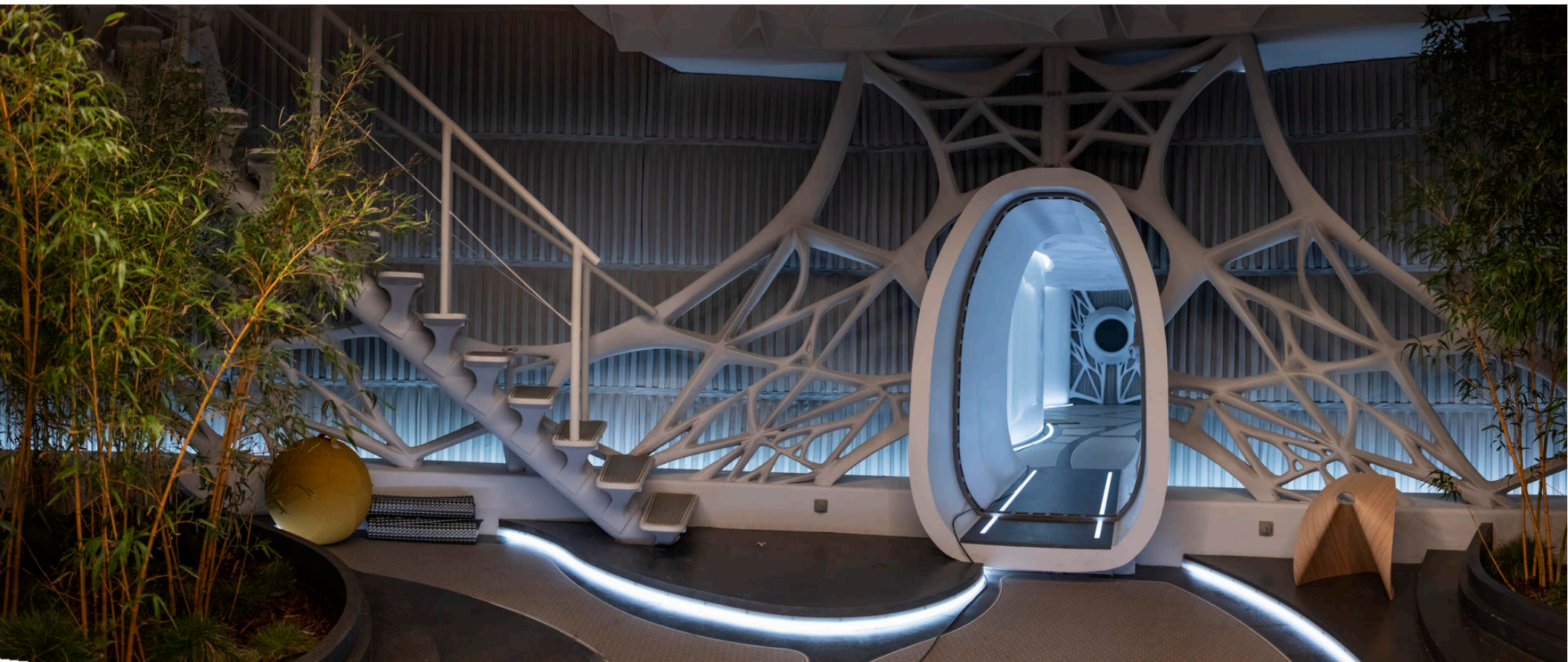
“LITTLE EARTH” SET UNDER CONSTRUCTION

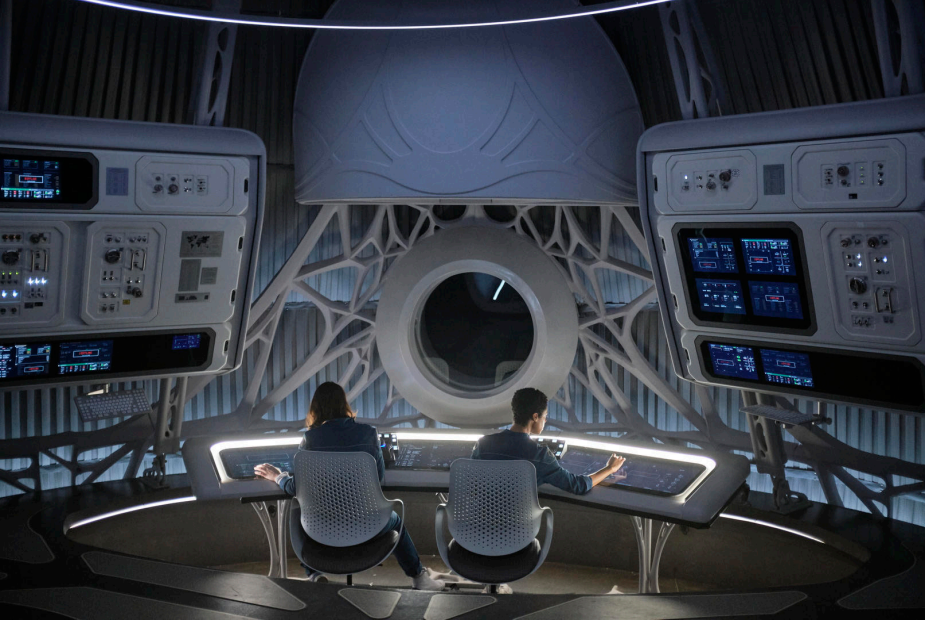


“LITTLE EARTH” SET ILLUSTRATION



“LITTLE EARTH” SET STILLS





“LITTLE EARTH” SET STILLS





LOCATION PHOTO WITH SET PIECE

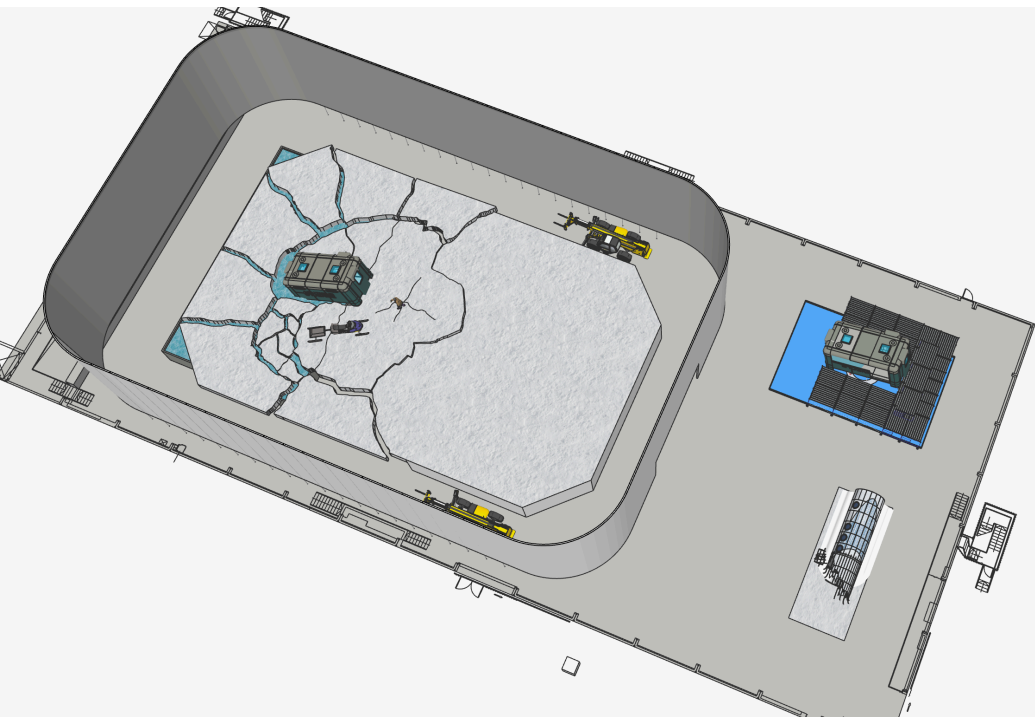


SET ILLUSTRATION

ARCTIC JOURNEY

Location: Vatnajökull Glacier, Iceland
Exterior Special Effects sets, Interior sets: Shepperton Studios

SPECIAL EFFECTS SET BUILD ON TANK FOR ICE BREAKUP



SET PHOTO





ARCTIC JOURNEY - *Private Jet Crash Site*

Location: Vatnajökull Glacier, Iceland
Interior Sets: Shepperton Studios

CONCEPT ILLUSTRATIONS



LOCATION PHOTO SET PHOTOS



K - 23 A HABITABLE MOON OF JUPITER

This Europa-like moon, though covered in a thick ice sheet and despite its distance from the sun, generates heat and energy from its core through constant flexing by the gravitational pull of Jupiter. The chasms in the ice sheet are found to support human life by the astronauts traveling on *AETHER*.



*CONCEPT
ILLUSTRATION OF
K - 23*



*LOCATION PHOTO -
LA PALMA, SPAIN*



*CONCEPT
ILLUSTRATION BASED
ON LOCATION WITH
SET EXTENSIONS*



*K-23 ENHANCED LOCATION
CONCEPT PAINTINGS -
LA PALMA, SPAIN*





FINAL DESTINATION: LAKE HAZEN

Location: Höfn, Iceland
Interior sets: Shepperton Studios