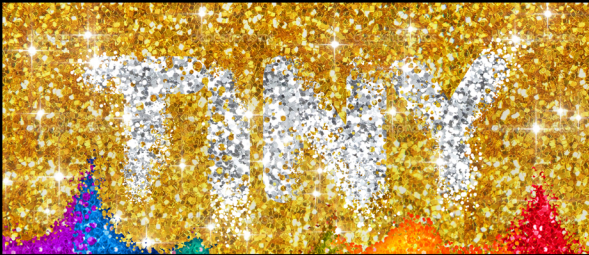




**FOR YOUR ADG AWARDS CONSIDERATION
EXCELLENCE IN PRODUCTION DESIGN
ANIMATED FILM**

Kendal Cronkhite Shaindlin, Production Designer
Timothy Lamb, Art Director







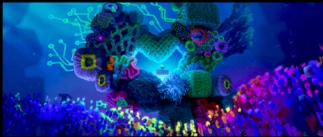




shot 1 A



shot 1 B



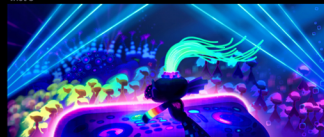
shot 1 C



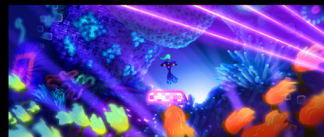
shot 2



shot 3



shot 4



shot 7



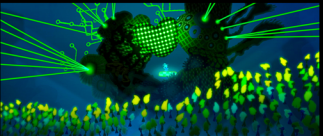
shot 9



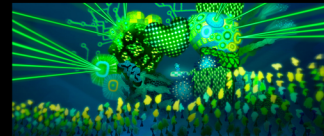
shot 10



shot 23 A



shot 23 B



shot 26



shot 25 A



shot 32



shot 37



shot 41



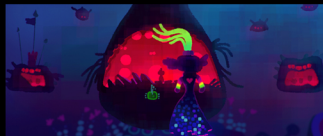
shot 44



shot 61



shot 63



shot 79



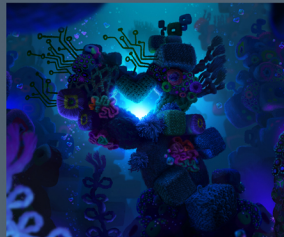
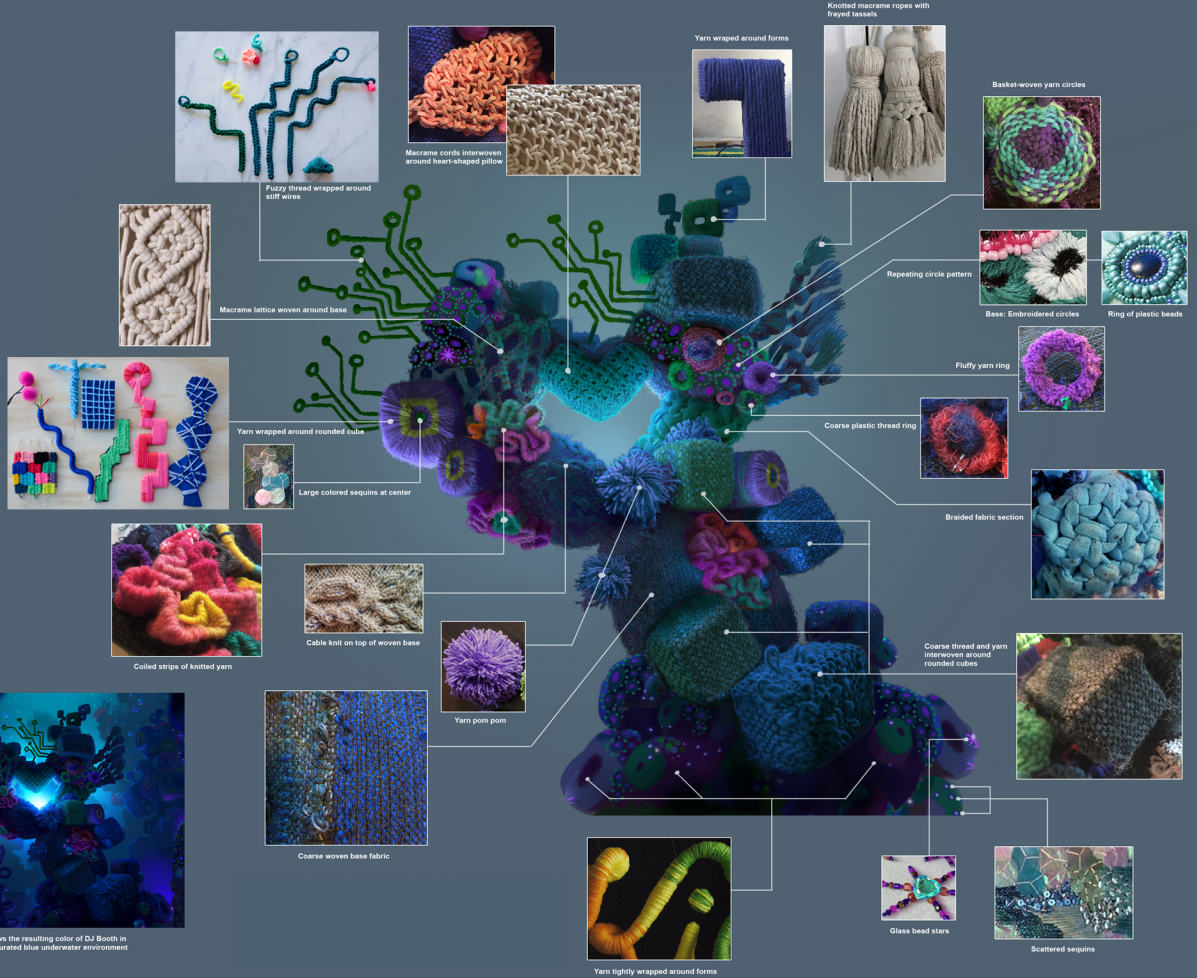


Image shows the resulting color of DJ Booth in its dim, saturated blue underwater environment

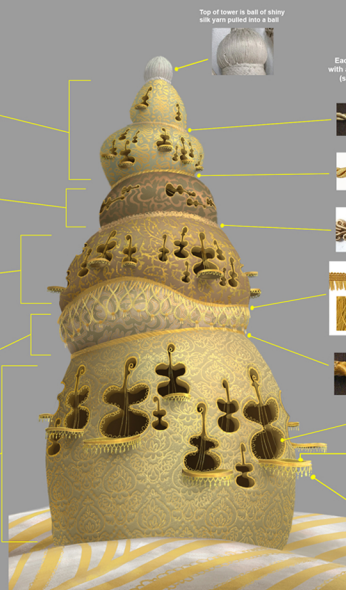




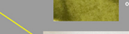
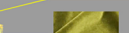
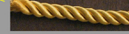
Base fabric: Colored silk

Pattern

Embroidered look applied to pattern, sewn onto colored silk



Each level of tower is separated with a different style of trim / piping (some trims can be repeated)



Thin thread loops line some of the larger holes



Glowing embers of smoldering fabric at torn edges



Pad of velvet covers top surface of each protruding balcony

Band with hanging loops cover edges of balconies. A single piece of eyelash trim dangles off of each loop.



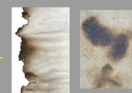
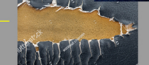
Columns of "smoke" consisting of thin tangled threads



Fiber stuffing pulled out of open holes



Exposed inner foam of lower velvet through open holes



Charred edges and radiating "bleat marks"

