

little fires everywhere



for your consideration



hulu

ext richardson house - location (los angeles)

little fires everywhere

“The Richardson mansion plays an additional character that should receive top billing in the credits”
- Architectural Digest



hulu



int richardson house - foyer - stage build

little fires everywhere



int richardson house - dining room & foyer - stage build

little fires everywhere



A study connects the sun room and living room. Finished in square red oak paneling, this room expresses the wealth and power wielded by the Richardsons.



Contrasting jewel tones and patterns were vital in setting the period of 1997. Custom tudor stone fireplaces anchor the living and dining rooms.



int richardson house - kitchen & sun room - stage build

little fires everywhere

“But as much as the show is an intimate and dramatic
look at motherhood, gender roles, racism, and privilege,
it also doubles as a time capsule of the 1990s”

-Marie Claire



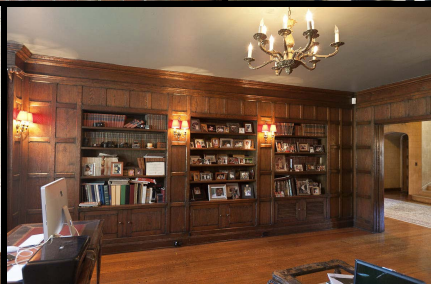
hulu

int richardson house - kitchen - stage build

little fires everywhere

Large tudor arch windows create the backbone of the sun room. The pale yellows and blues used are straight out of the 90s. The sofas and drapery are all custom.

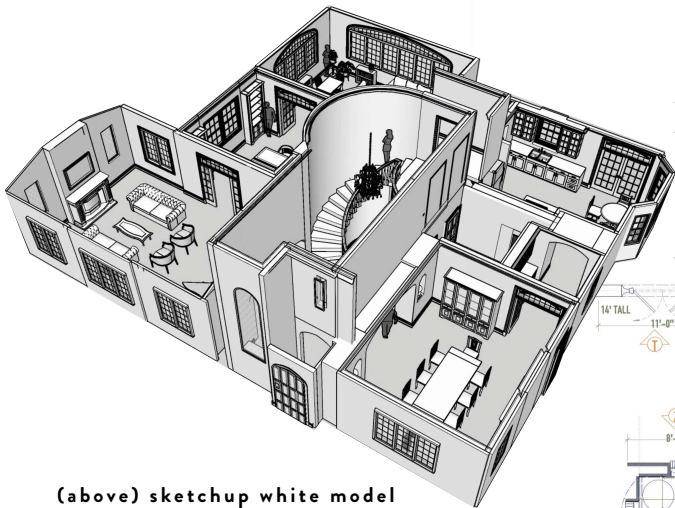




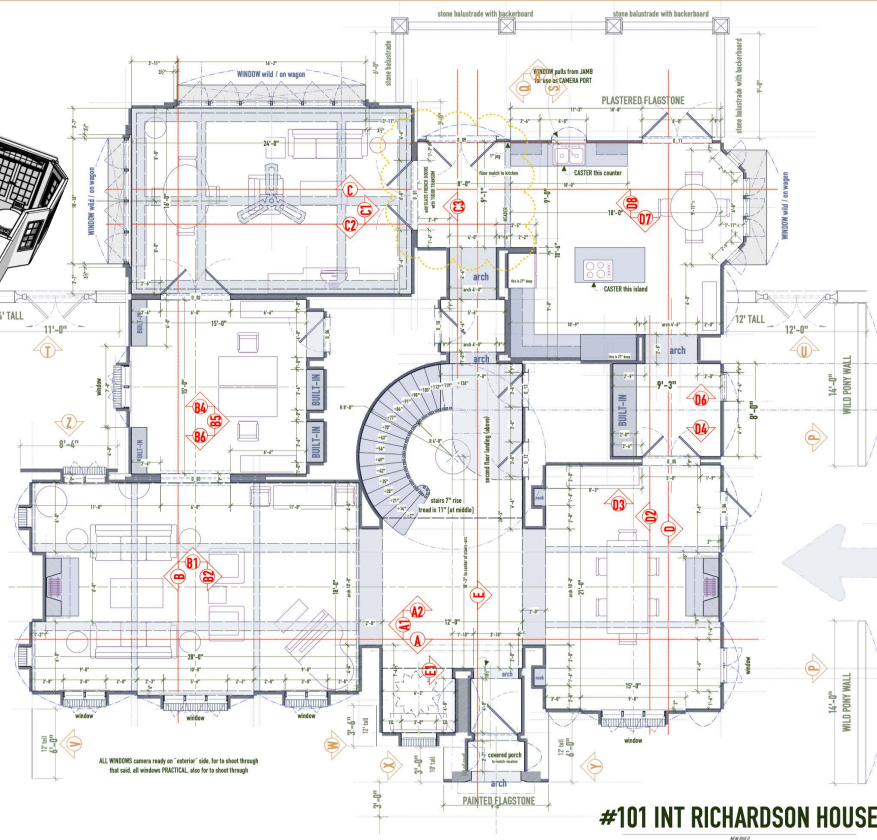
primary source research was critical in identifying the tudor house details & isolating the decor that would have been present in 1997 suburban ohio.

little fires everywhere

int richardson house - research



(above) sketchup white model



(right) richardson house first floor groundplan

ALL WINDOWS ensure ready on "exterior" side. So to shoot through that wall, all windows PRACTICAL, also for to shoot through

#101 INT RICHARDSON HOUSE

NEW FILE



The second floor hallway was designed to be as long as possible to reinforce the scale of the Richardson house.



int richardson house - master bedroom - stage build

little fires everywhere



int richardson house - master bathroom - stage build

little fires everywhere



Lexie's room is the iconic girly teenager's room from the 90s with floral on floral. She is clearly Elena's daughter.

"The most appealingly nostalgic moments come whenever
we get to see one of the five teen character's bedrooms."
- The Cut



int richardson house - lexie's bedroom - stage build

little fires everywhere



Izzy's room is in contrast to Lexie's. Izzy has covered up as much of the floral decor chosen by her mother as possible - a sign of her rebellious existence in the Richardson house. The layering of graphics and 90's decor was a labor of love.

hulu



hulu

ext windsor apartment & mia's car - location (los angeles)

little fires everywhere



int windsor apartment - art studio - stage build

little fires everywhere



It was important to reflect Mia's transitory nature. As an artist, Mia would only pick items that had a soul. She has found 60s/70s cast offs at thrift stores to furnish her rental apartment.



In the show, Pearl paints her room cerulean blue. A sponge texture gives the color depth and life. A mish-mash of decor from thrift stores brings warmth and character.



int windsor apartment - mia's bedroom - stage build

little fires everywhere



int shaker times newspaper office - stage build

little fires everywhere



int lucky palace chinese restaurant - stage build

little fires everywhere



int lucky palace - back office - stage build

little fires everywhere



hulu

ext lucky palace - loading dock - location

little fires everywhere



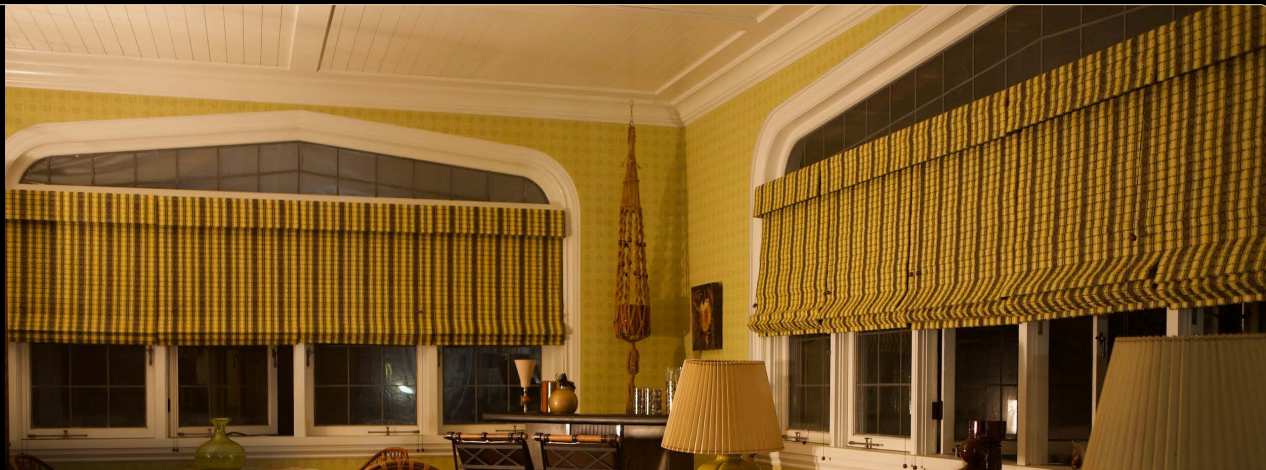
(above)
before - 1997



A flashback scene amidst cross-boarded episodes necessitated careful design & planning. All cabinets & moulding were wood-grained by the paint dept. A custom wallpaper was printed to phototex. As soon as the scene finished, the set was restored to the original 1997 configuration.

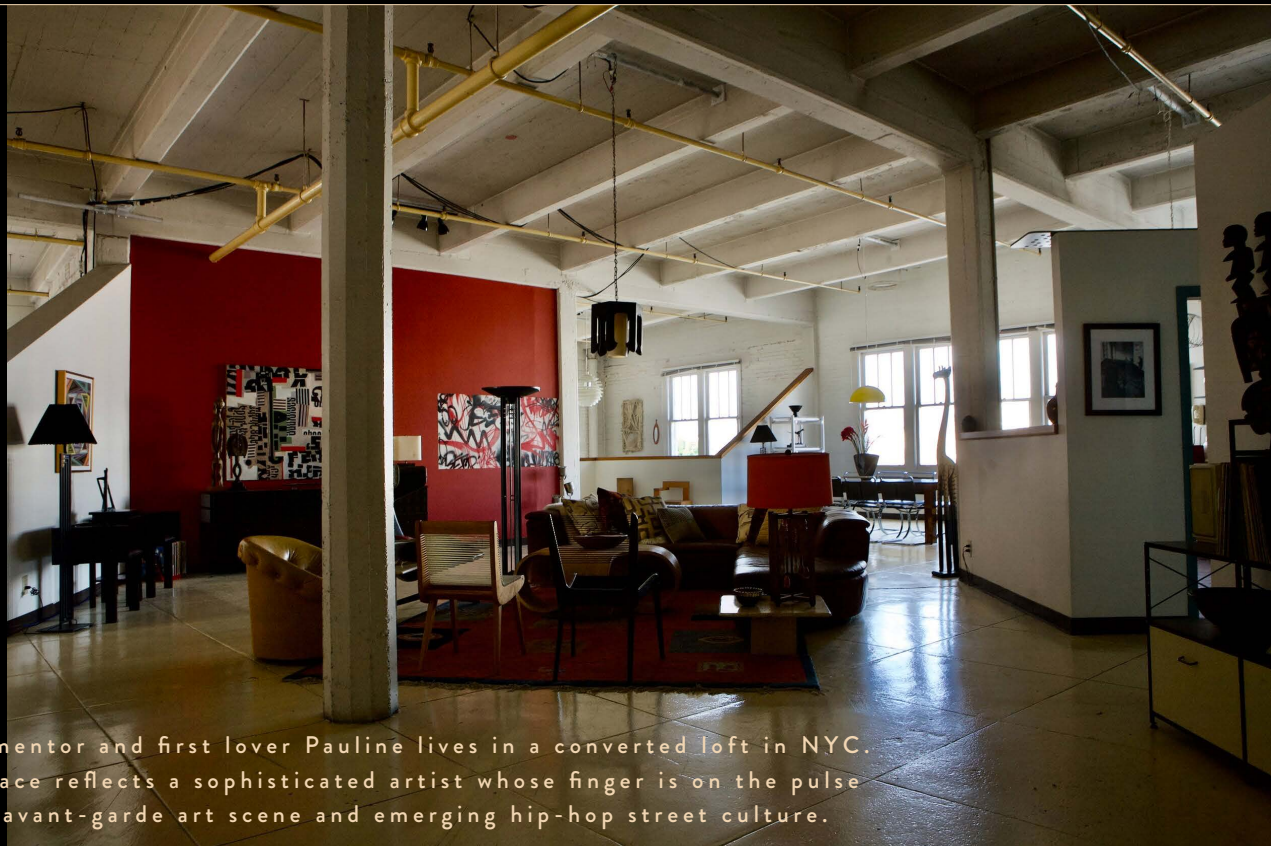


(below)
before - 1997



int richardson house - flashback 1980 - stage build

little fires everywhere



Mia's mentor and first lover Pauline lives in a converted loft in NYC.
Her space reflects a sophisticated artist whose finger is on the pulse
of the avant-garde art scene and emerging hip-hop street culture.



int new york city subway - 1980

little fires everywhere



All of Mia's art was created by local artist Connie Martin Trevino. It plays a pivotal role in the story and required an additional layer of communication and collaboration.



mia's artwork - elena burn sculpture

little fires everywhere

thank you for your consideration

jessica kender production designer

set decorator lisa clark

brian grego art director

leadman nelson bush

albert cisneros assistant art directors

shengxin jin

set dec buyers robyn holmes

morgan lindsey price

joanna vnezky

jubilate cox

eva frshein

rhea rebbe set designers

rhonda elliott

arthur chadwick

jill deibler

kelly hogan

yumi arai

david touster

beth emerson

steven milosavleski graphic designers

kim papazian

construction coordinator jeff goyer

vanessa riegel

construction foreman dan wade

kevin egeland

paint foreman mark maloof



little fires everywhere