

HALSTON



**HALSTON** is a 5 part limited miniseries based on the rise and fall of the American fashion designer.

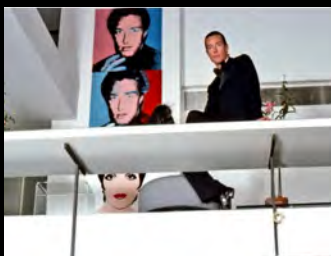
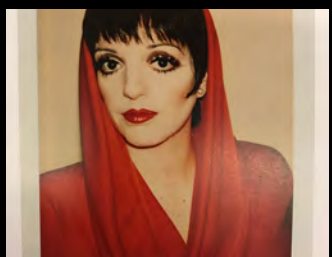
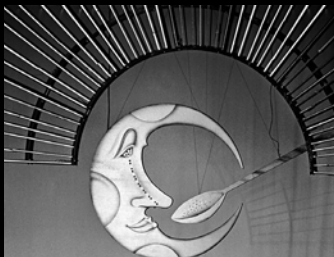
As such, the design was tasked to recreate iconic New York environments from Halston's life - including his OLYMPIC TOWER OFFICE, The PAUL RUDOLPH TOWNHOUSE, HALSTON LTD., The BATTLE of VERSAILLES, and STUDIO 54.

The show was made on location in NEW YORK CITY, JERSEY CITY, YONKERS, TARRYTOWN and LONG ISLAND, NY - and on sets built at BROADWAY STAGES in QUEENS, NEW YORK.

The series primarily covered the era from 1961 - 1987. Dan Minahan directed all 5 episodes:

*BECOMING HALSTON / VERSAILLES / THE SWEET SMELL OF SUCCESS / THE PARTY'S OVER / CRITICS*









68th STREET BOUTIQUE, HALSTON LTD. 1967 - 1974 / *LOCATION BUILD & DRESS*



SALON CONSTRUCTION and HALSTON'S 3rd FLOOR WORKROOM / Phase One 1967



ANGELO DONGHIA DRAPED SALON for 1st FASHION SHOW / Phase Two 1968









HALSTON'S OFFICE & 3rd FLOOR WORKROOM / Phase Three 1974





2nd FLOOR, HALSTON LTD. WHITE SALON / Phase Three 1974



1st FLOOR HALSTON LTD. BOUTIQUE / LOCATION BUILD & DRESS

1974 - 1978







JOEL SCHUMACHER WINDOWS at PARAPHERNALIA  
*DRESSED LOCATION*

1968





MIDTOWN NYC SUPPER CLUB  
*"LIZA WITH A Z" 1967*  
*DRESSED LOCATION*

CONCERT for NBC TELEVISION  
*"I GOTCHA" 1972*  
*STAGE SET*







BERGDORF GOODMAN 1961 / *DRESSED LOCATION #1*

BERGDORF MILLINERY 1961 / *DRESSED LOCATION #2*



BERGDORF'S MGR. OFFICE 1967 / LOCATION #3



BLOOMINGDALES 1967 / DRESSED LOCATION



BERGDORF'S PERFUME 1974 / LOCATION #4





ROY HALSTON FROWICK'S EAST SIDE PENTHOUSE APT. / *STAGE SET*

Phase One 1961



GREENWICH VILLAGE GAY BAR & RESTAURANT 1967 / *LOCATION DRESS*





HALSTON'S PENTHOUSE APARTMENT / *STAGE SET*

Phase Two 1967









HALSTON'S PENTHOUSE APARTMENT / *STAGE SET*

Phase Three 1974







PARIS ORLY AIRPORT 1974 / LOCATION DRESS







THE BATTLE OF VERSAILLES 1973 / LOCATION BUILDS & DRESS





VERSAILLES LOCATION #1  
YONKERS, NEW YORK



ELEANOR PARKER'S OFFICE at VERSAILLES



LOCATION



MARBLE INSTALL



MAIN HALL / OPERA WING



MURAL INSTALL





BACKSTAGE CORRIDORS & DRESSING ROOMS / KING'S OPERA





GIVENCHY'S PREPARATION / DRESSING ROOM









HALSTON'S PREPARATION / DRESSING ROOM





VERSAILLES LOCATION #2

*TARRYTOWN MUSIC HALL / NEW YORK*

STAGE, BACKSTAGE & WINGS / FRENCH and AMERICAN FASHION SHOWS

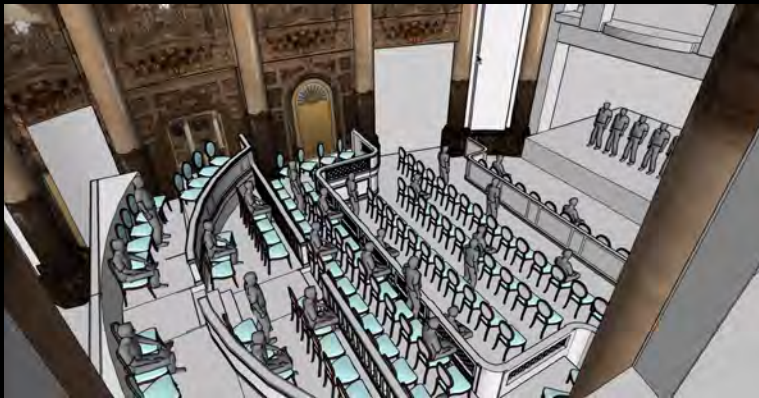
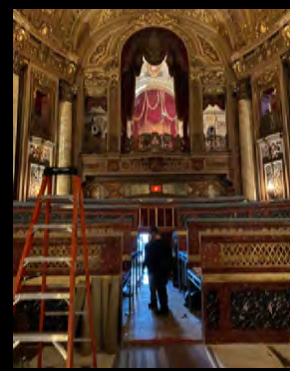






FRENCH FASHION SHOW / GIVENCY





VERSAILLES LOCATION #3

LOWES THEATRE LOBBY / JERSEY CITY, NJ

KING'S OPERA / ADDITION OF TIERED AUDIENCE and FORESHORTENED STAGE TO MATCH TARRYTOWN LOCATION







DAVID MAHONEY'S LONG ISLAND HOME 1977 / *DRESSED LOCATION*



DAVID MAHONEY'S OFFICE 1975 / *LOCATION BUILD* | PARK LANE RESTAURANT 1974 / *DRESSED LOCATION*



ELSA PERETTI LOFT 1974  
*DRESSED LOCATION*



IFF PERFUME LABORATORY 1974  
*DRESSED LOCATION*





OLYMPIC TOWER 1978 - 1987 / *STAGE SET*





DESIGN ROOM



RECEPTION

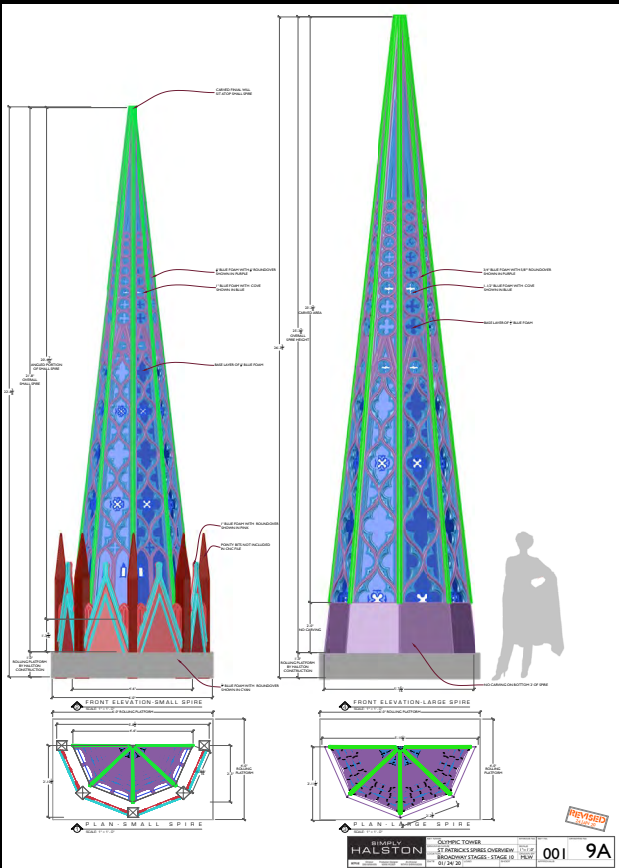


WORKROOM



SALON / 1970s



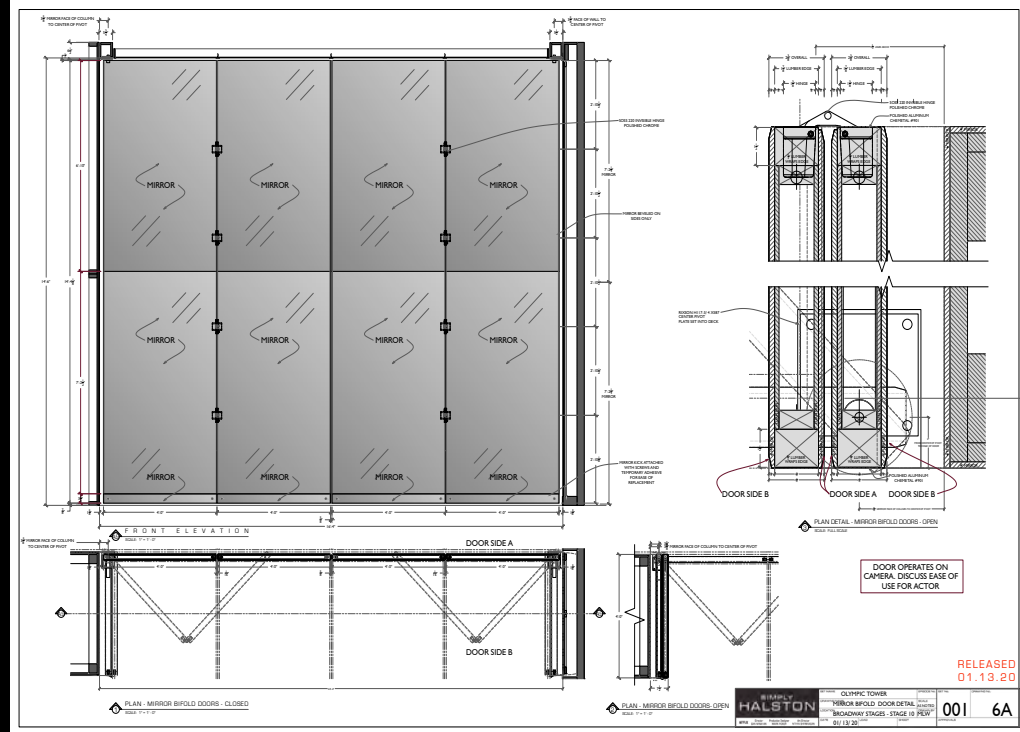
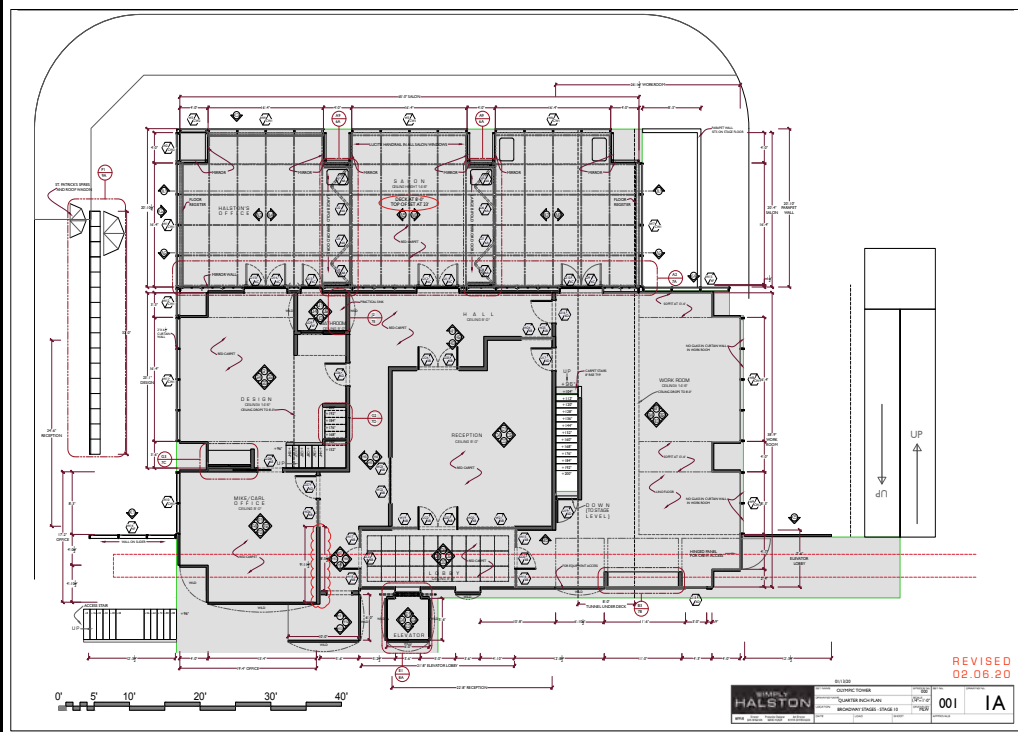


REFERENCE / PHIL GREENSTREET



ST. PATRICK'S CATHEDRAL DIMENSIONAL SPIRES  
220° PERIOD NYC DAY/NIGHT SOFT DROP by ROSCSO



















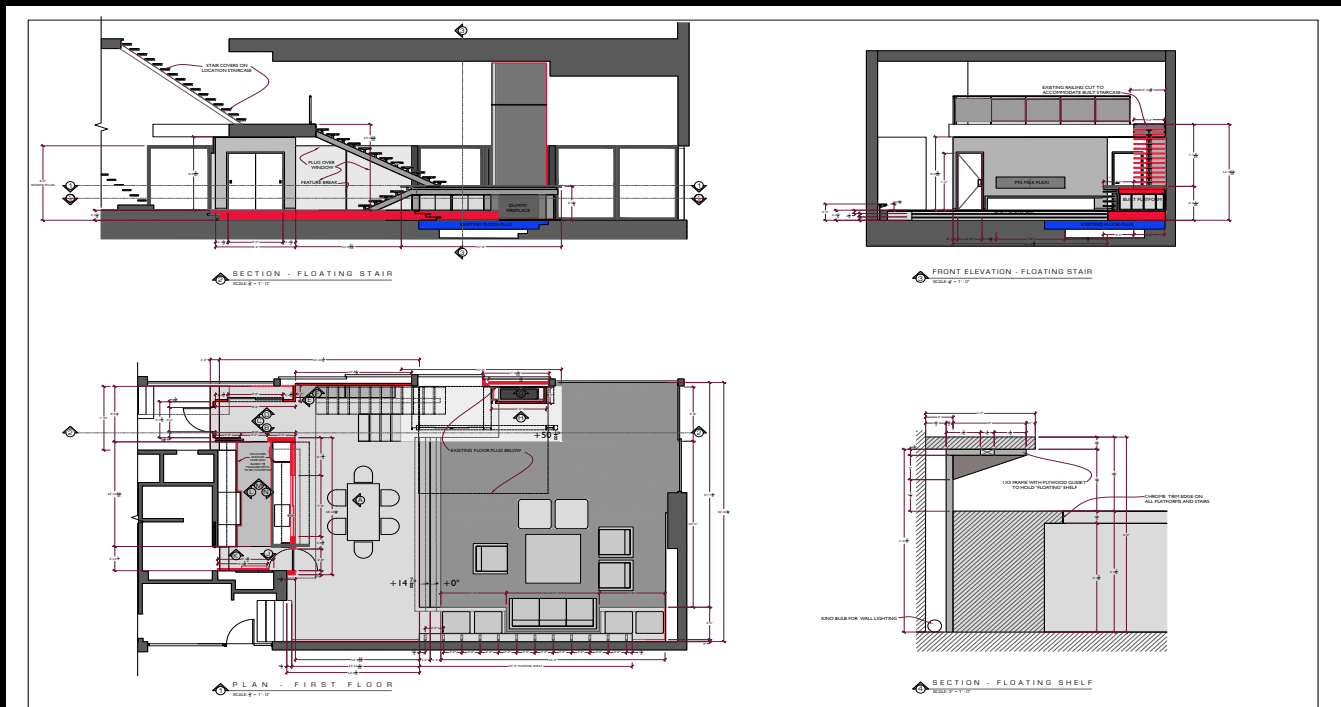






101 EAST 63rd Street TOWNHOUSE 1978 - 1987 / *LOCATION BUILD and DRESS*

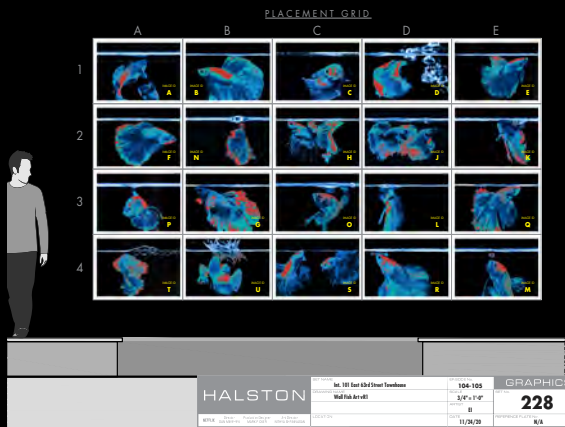
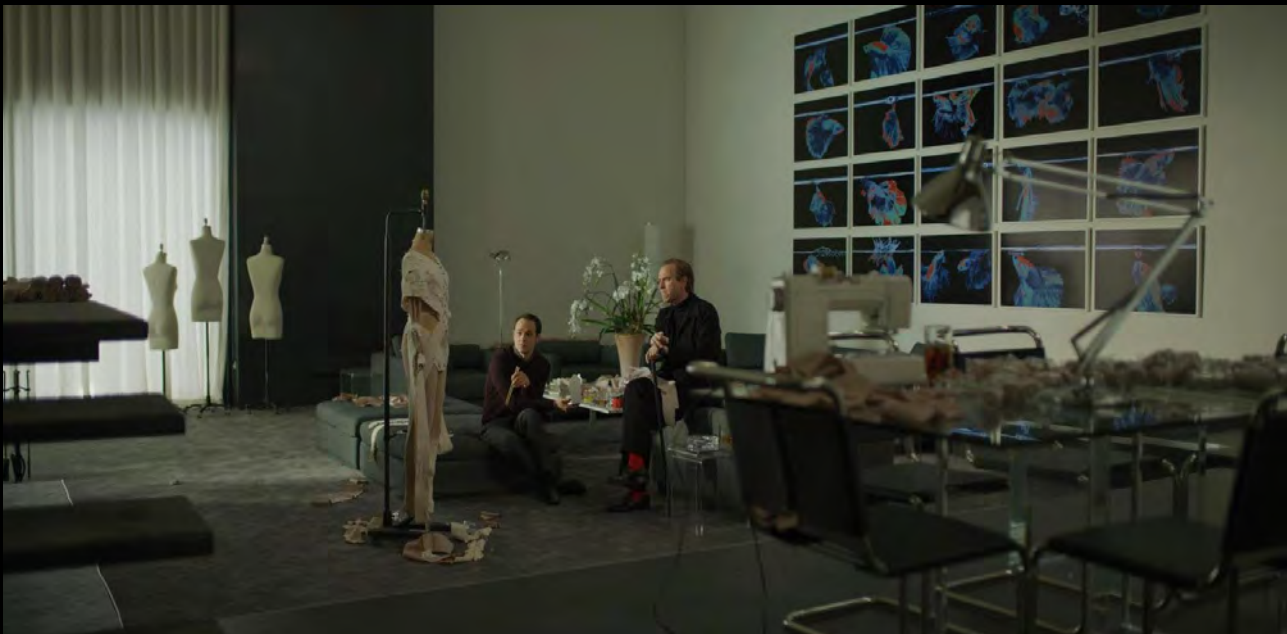












JAPANESE FIGHTING FISH

















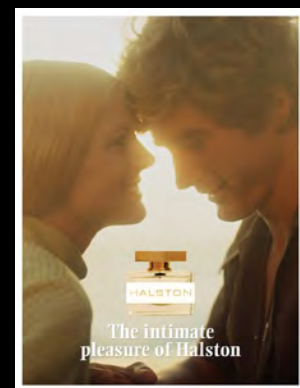


LIZA MINNELLI'S NYC APARTMENT 1981 / *DRESSED LOCATION*









MAX FACTOR CORPORATE OFFICES 1974 / LOCATION BUILD & DRESS





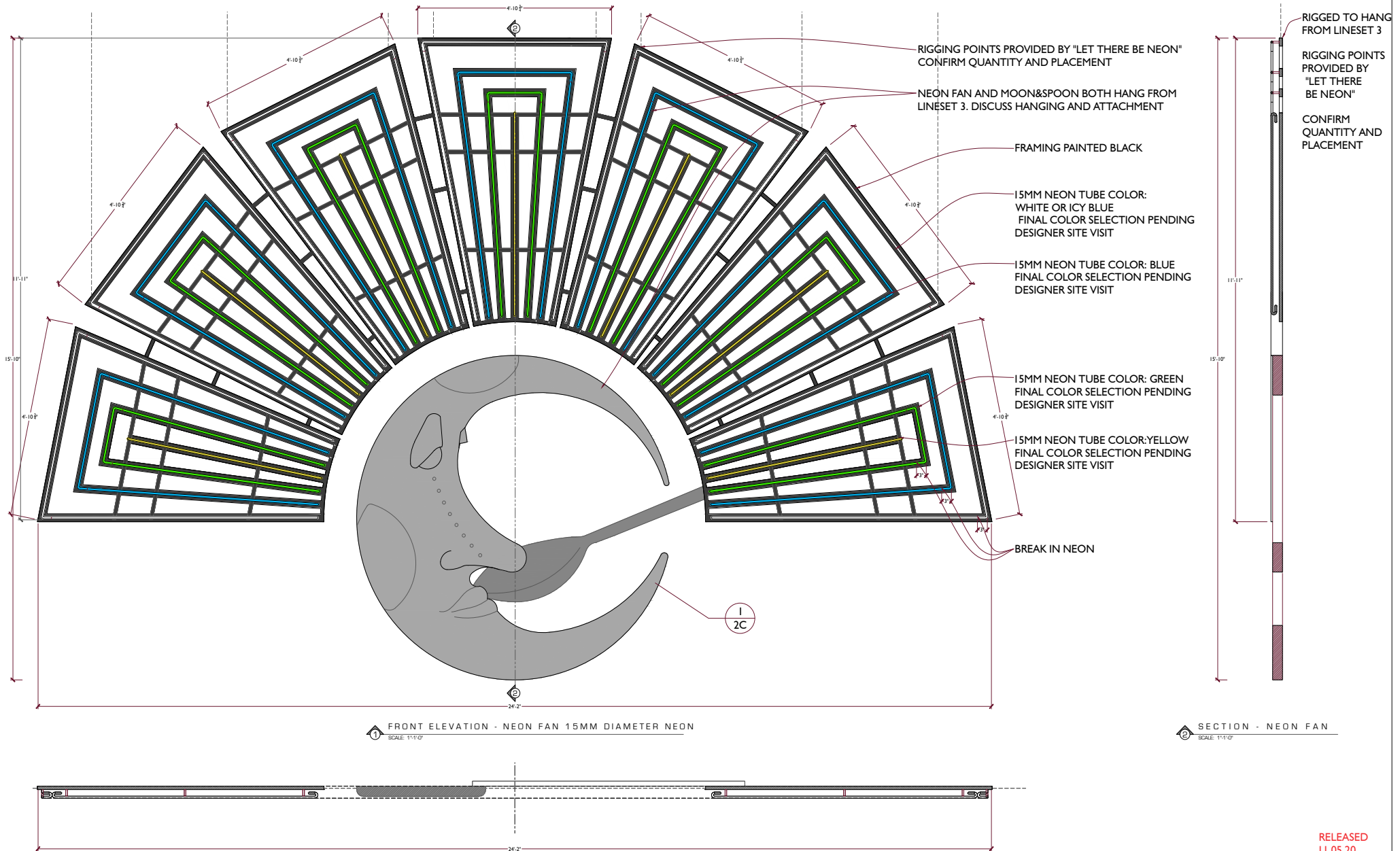
STUDIO 54 1978 / *LOCATION BUILD & DRESS*







## TECH SPECS TO BE PROVIDED BY VENDOR "LET THERE BE NEON" FOR FINAL REVIEW



1 FRONT ELEVATION - NEON FAN 15MM DIAMETER NEON  
SCALE: 1"=1'-0"

SECTION - NEON FAN

PLAN - NEON FAN







MARTHA GRAHAM'S "PERSEPHONE" / *DRESSED LOCATIONS* 1987



HALSTON'S MEMORY / *DRESSED LOCATION*





INDIANA FUNERAL HOME 1987  
*DRESSED LOCATION*



CHILDHOOD HOME / EVANSVILLE, INDIANA 1938  
*DRESSED LOCATION*

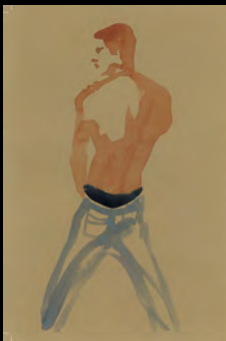






MONTAUK COMPOUND 1982 - 1987 / *DRESSED LOCATION*





















THANK YOU





# HALSTON

PRODUCTION DESIGNER

*MARK RICKER*

ART DIRECTOR

*NITHYA SHRINIVASAN*

SET DECORATOR

*CHERISH M. HALE*

ASSISTANT ART DIRECTOR

*MARIE LYNN WAGNER*

2ND ASSISTANT ART DIRECTOR

*JOEY FELD*

SET DESIGNER

*BLYTHE QUINLAN*

GRAPHIC DESIGNER

*EDDIE IOFFREDA*

ILLUSTRATOR

*ANITA RUNDLES*

ADDITIONAL GRAPHIC ARTIST

*NATALIE HOFFMAN*

CHARGE SCENIC ARTIST

*JOE GARZERO*

ASSISTANT SET DECORATOR

*CAROL NAST*

ART DEPARTMENT COORDINATORS

*ANN MCKINNON & LEANN MURPHY*

LOCATION MANAGERS

*AMANDA FOLEY-BURBANK & CHRISTOPHER BRITTON*

GRAPHICS P.A.

*LOUISA SAVAGE*

ART DEPARTMENT P.A.'S

*MAYA LIN-BRONNER & JEAN-LUC SWIFT*