

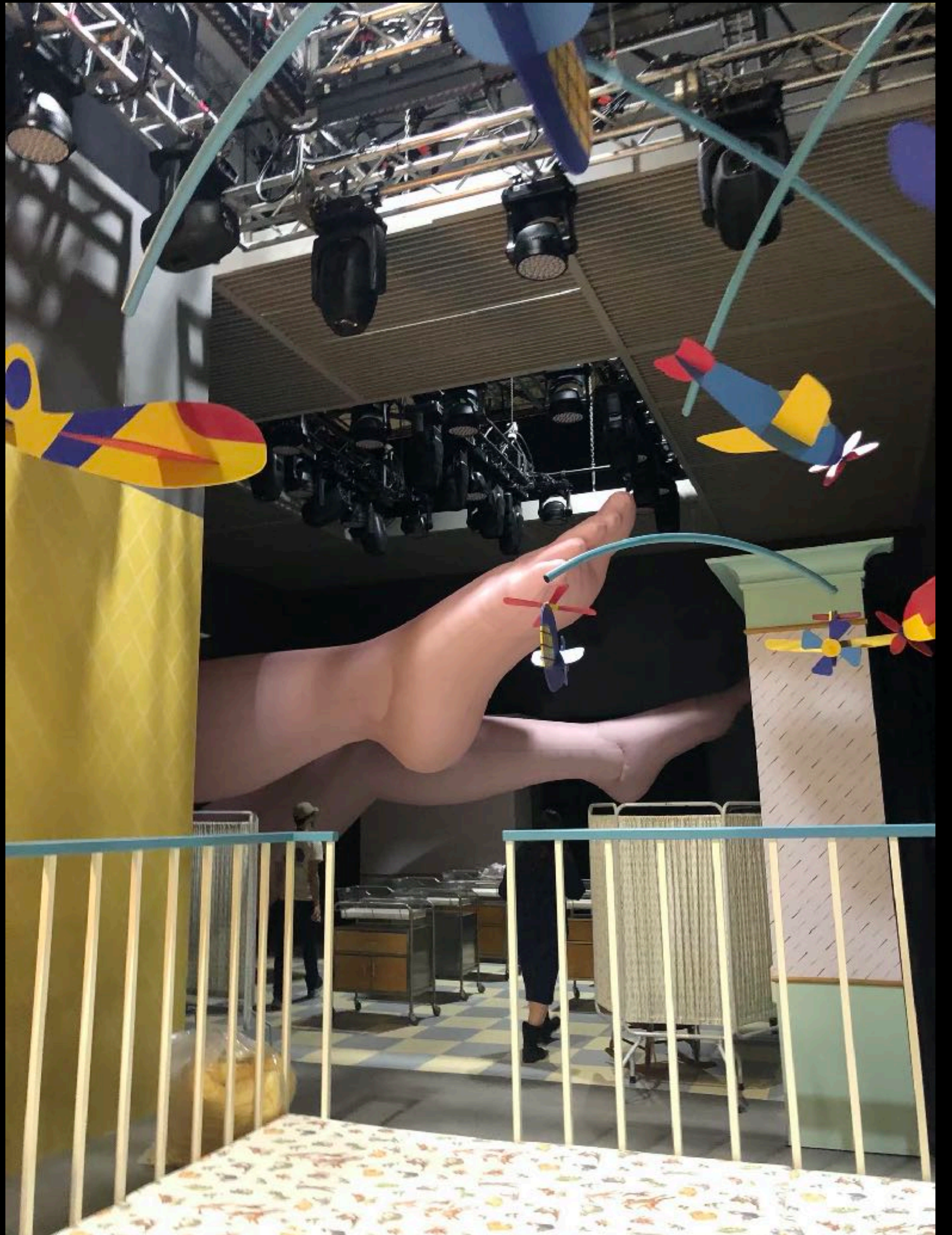
TOO MUCH BIRTHDAY (Literally!)

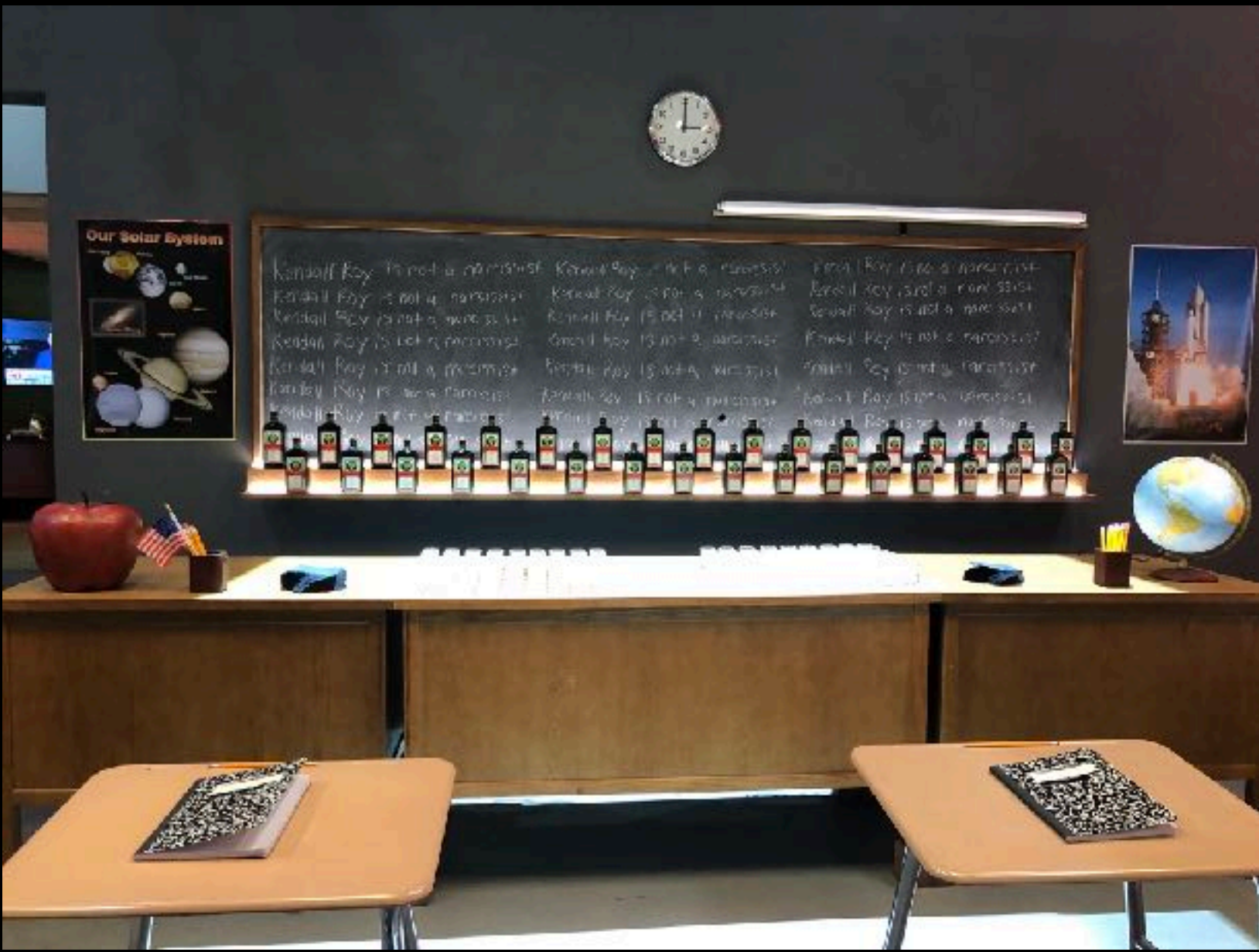
Kendall's 40th birthday party was ambitious enough that we had to split it into essentially four parts- exteriors, locations, and two phases of builds at our stage facilities at silver cup east. We Wanted to give our editors flexibility with sequencing the flow of the event, so we created a party environment that confused the eye so you didn't really ever quite know where you were within the maze. The entrance to the party and the birth canal tunnel, the main dance hall, the corridors and escalators and the present room were all shot at the shed at Hudson. The hospital arrival, nursery, private school, Waystar office, hip-hop bar and Future room Were shot in phase 1 on stage. After that several sets were struck and replaced with the VIP Treehouse and Complement Tunnel which were late additions to the script. Our Drug Room was shot at another location in tandem with a different episode.

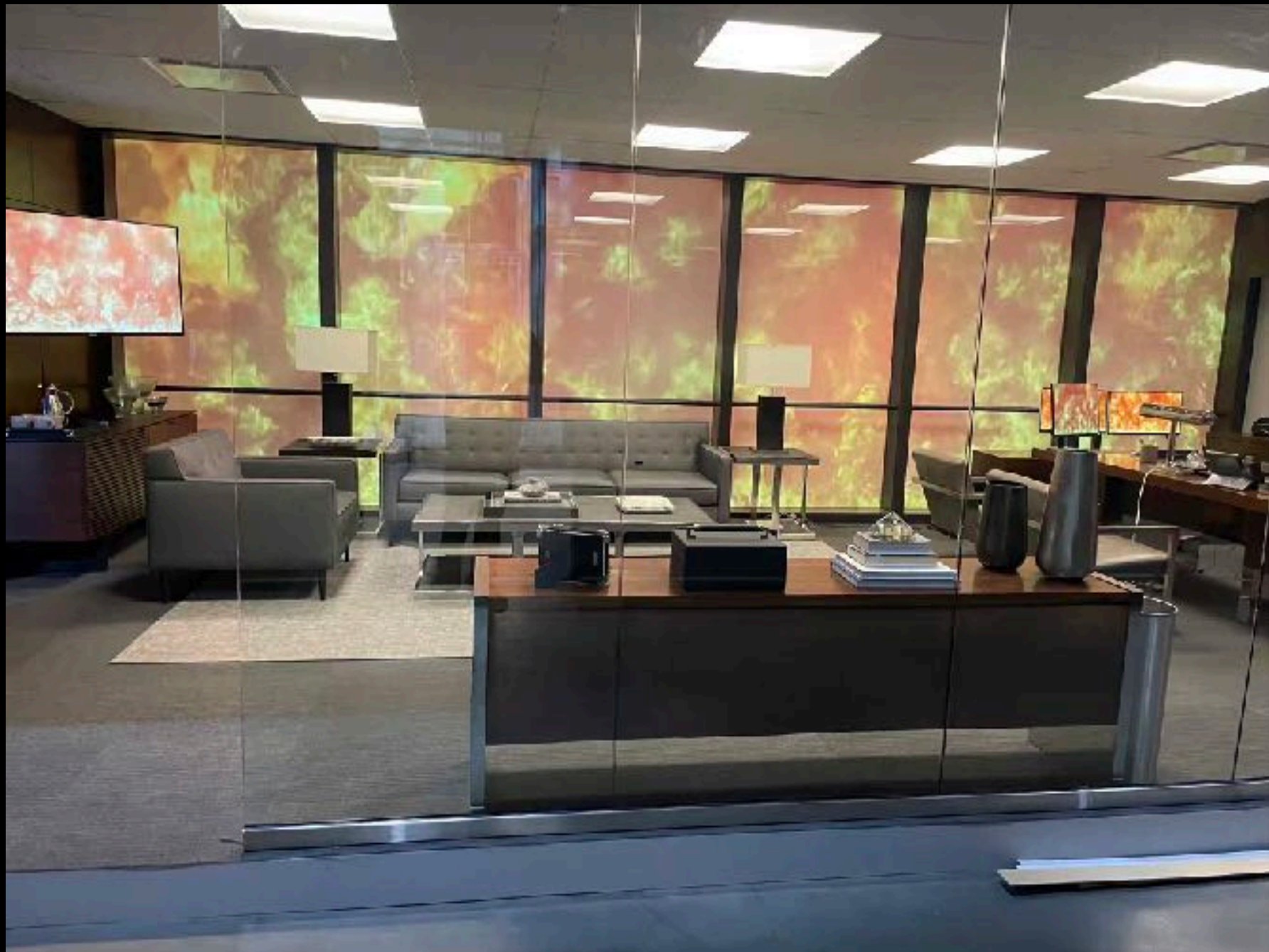


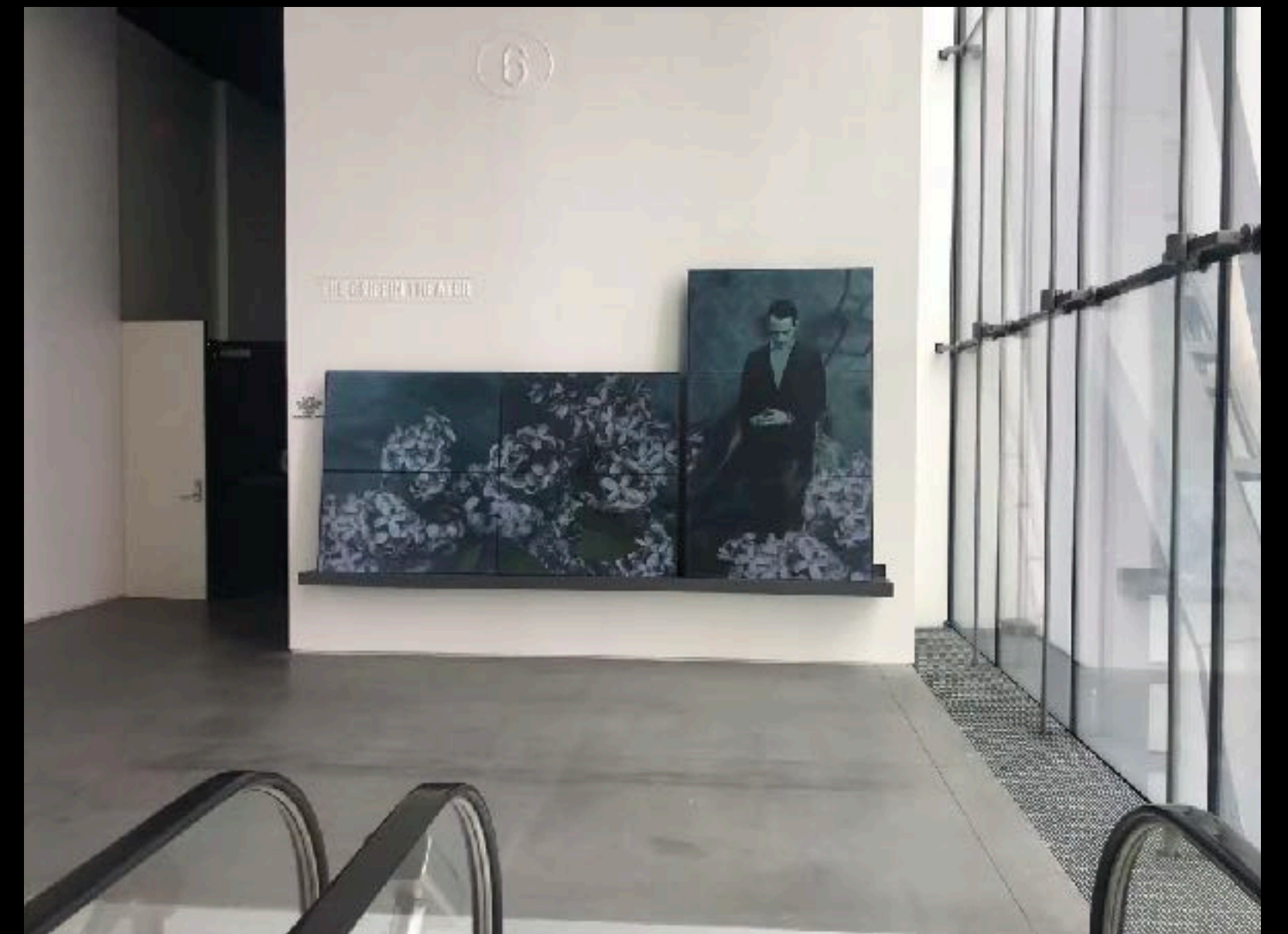
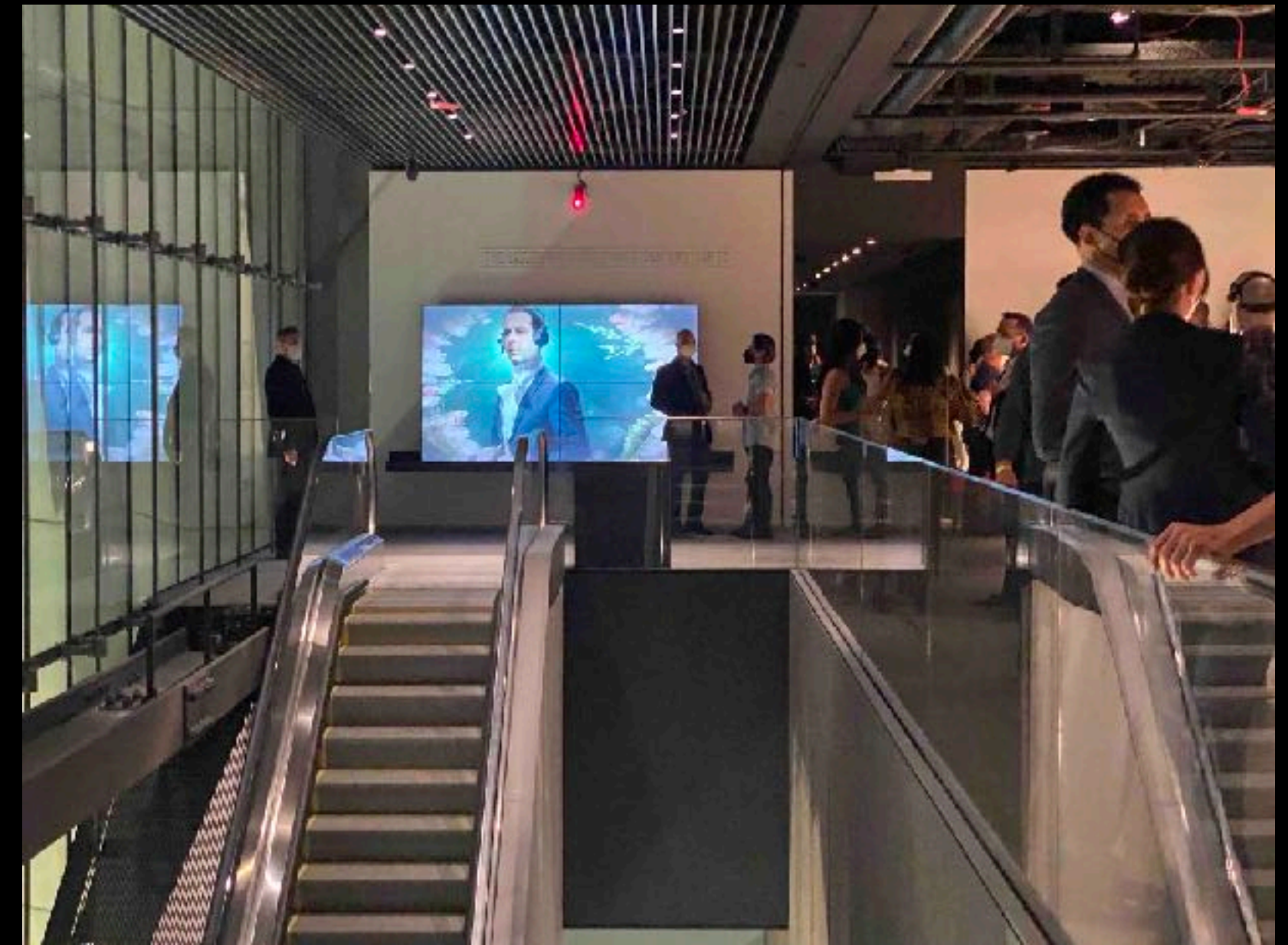


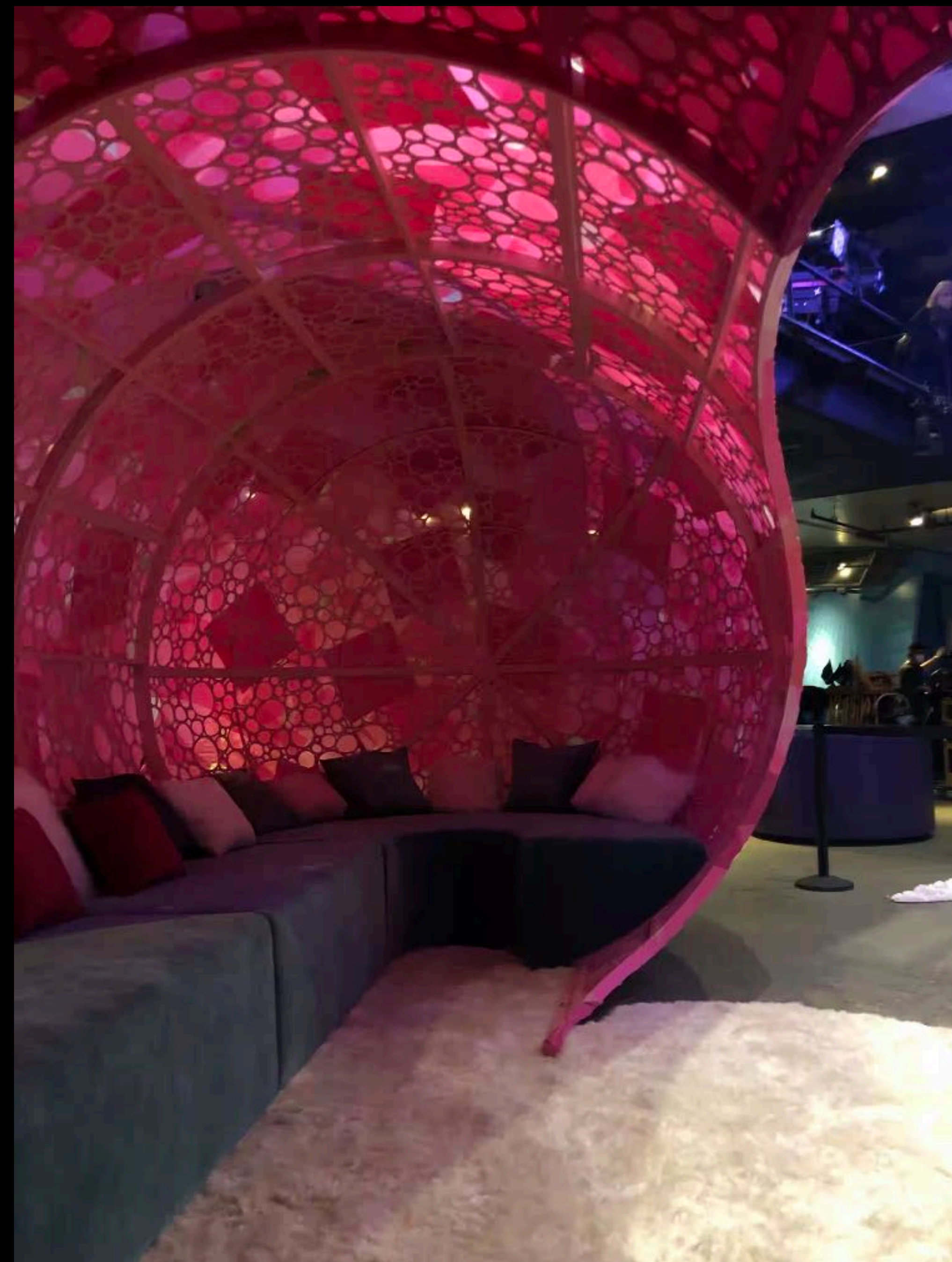
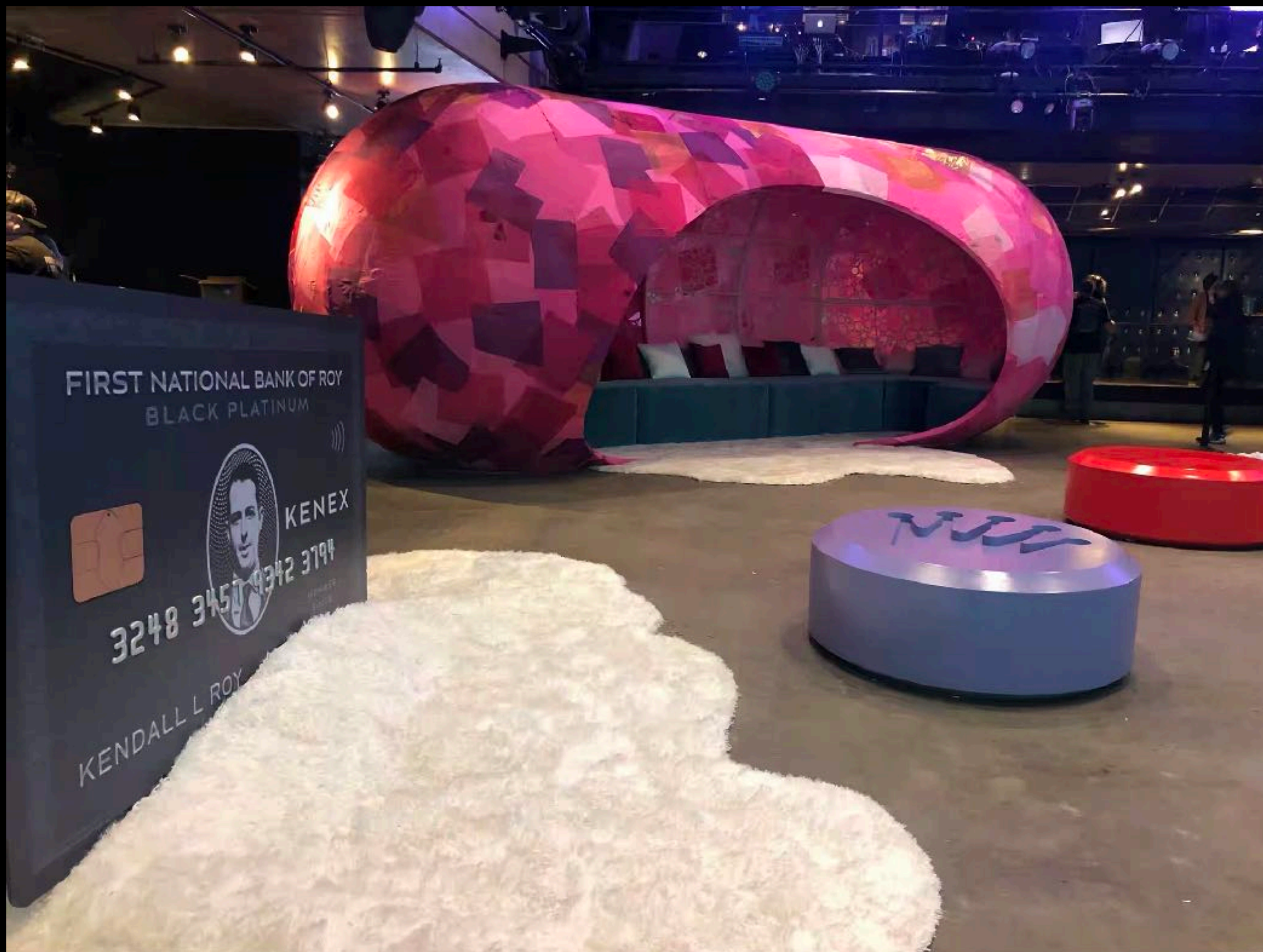






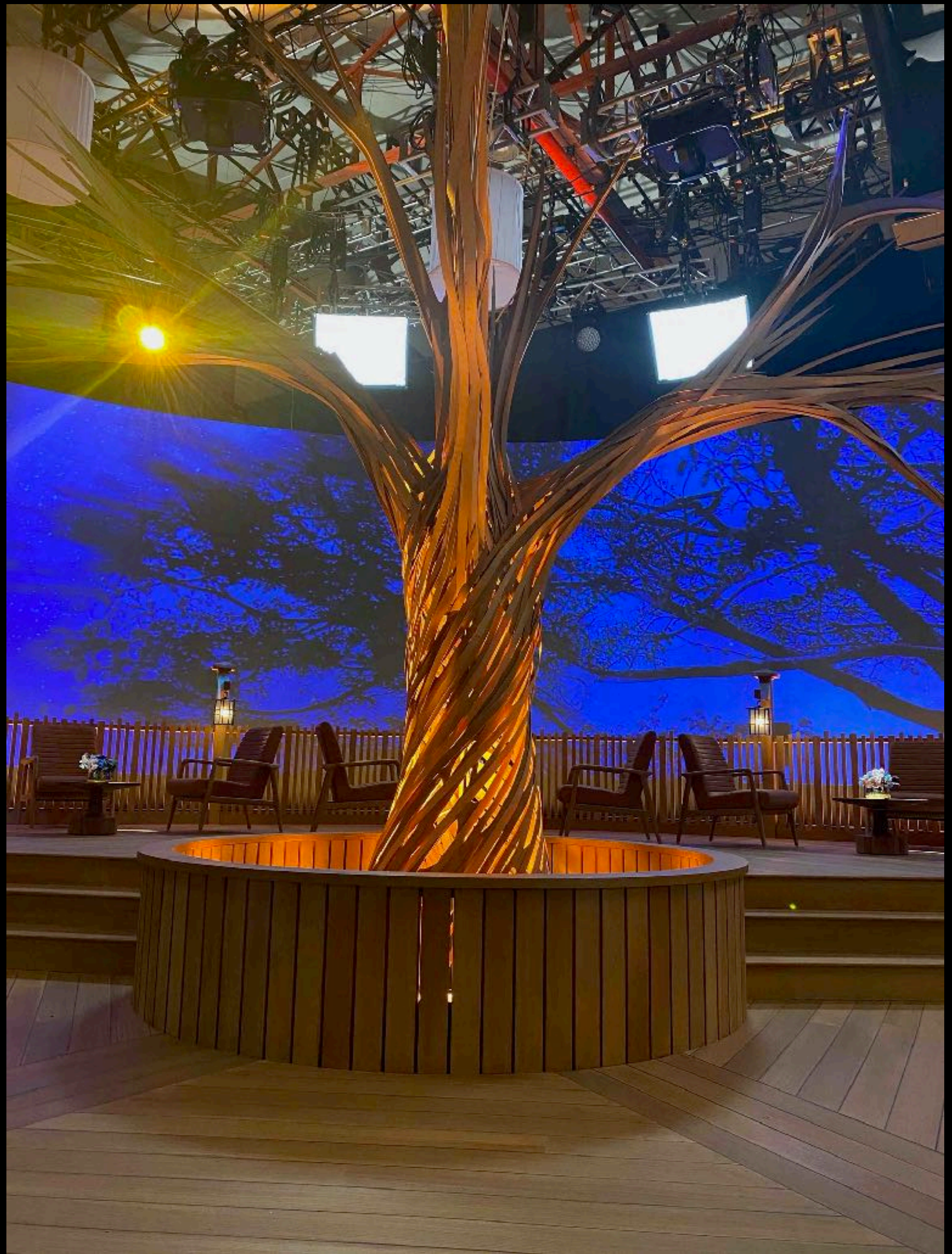
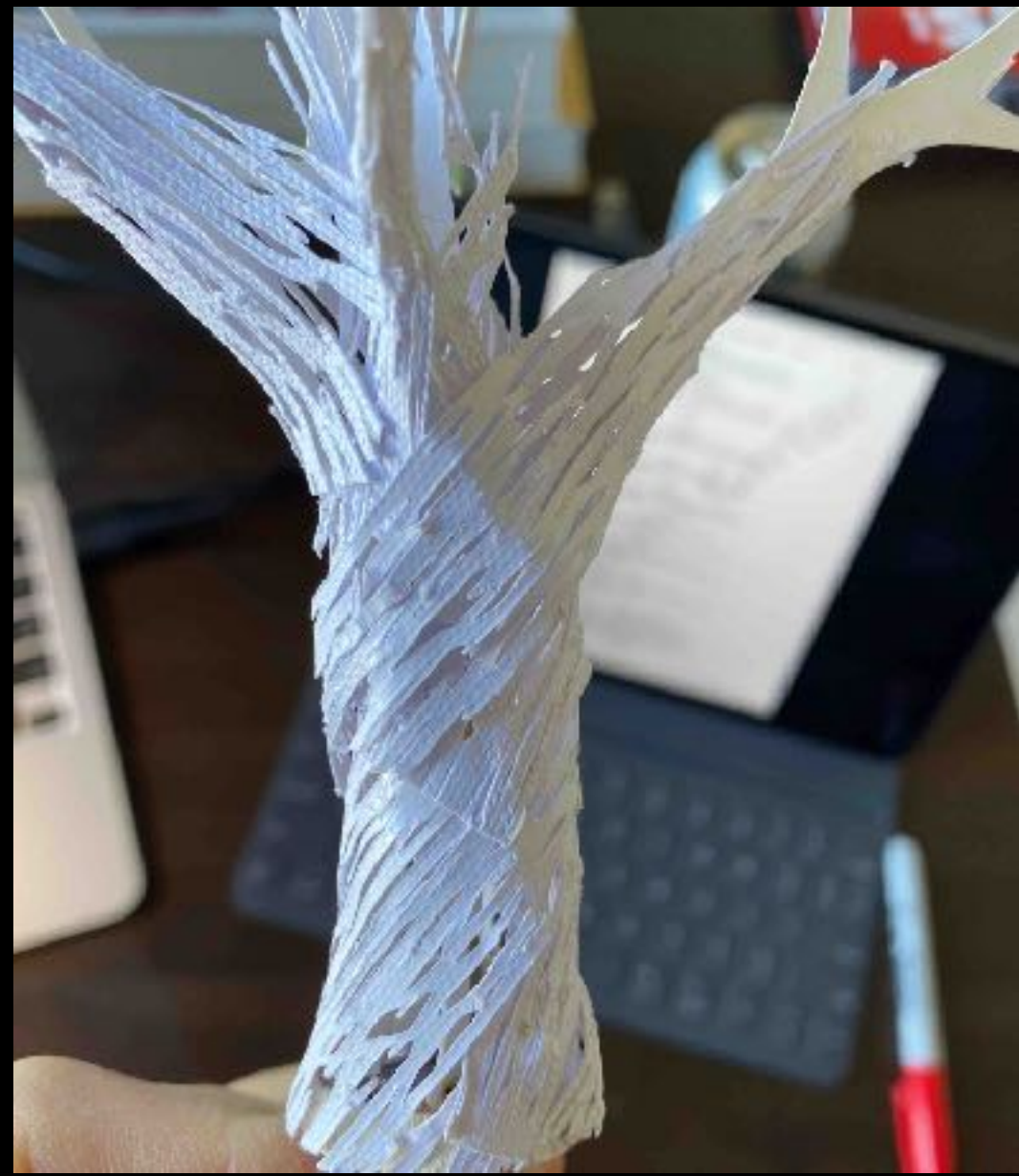






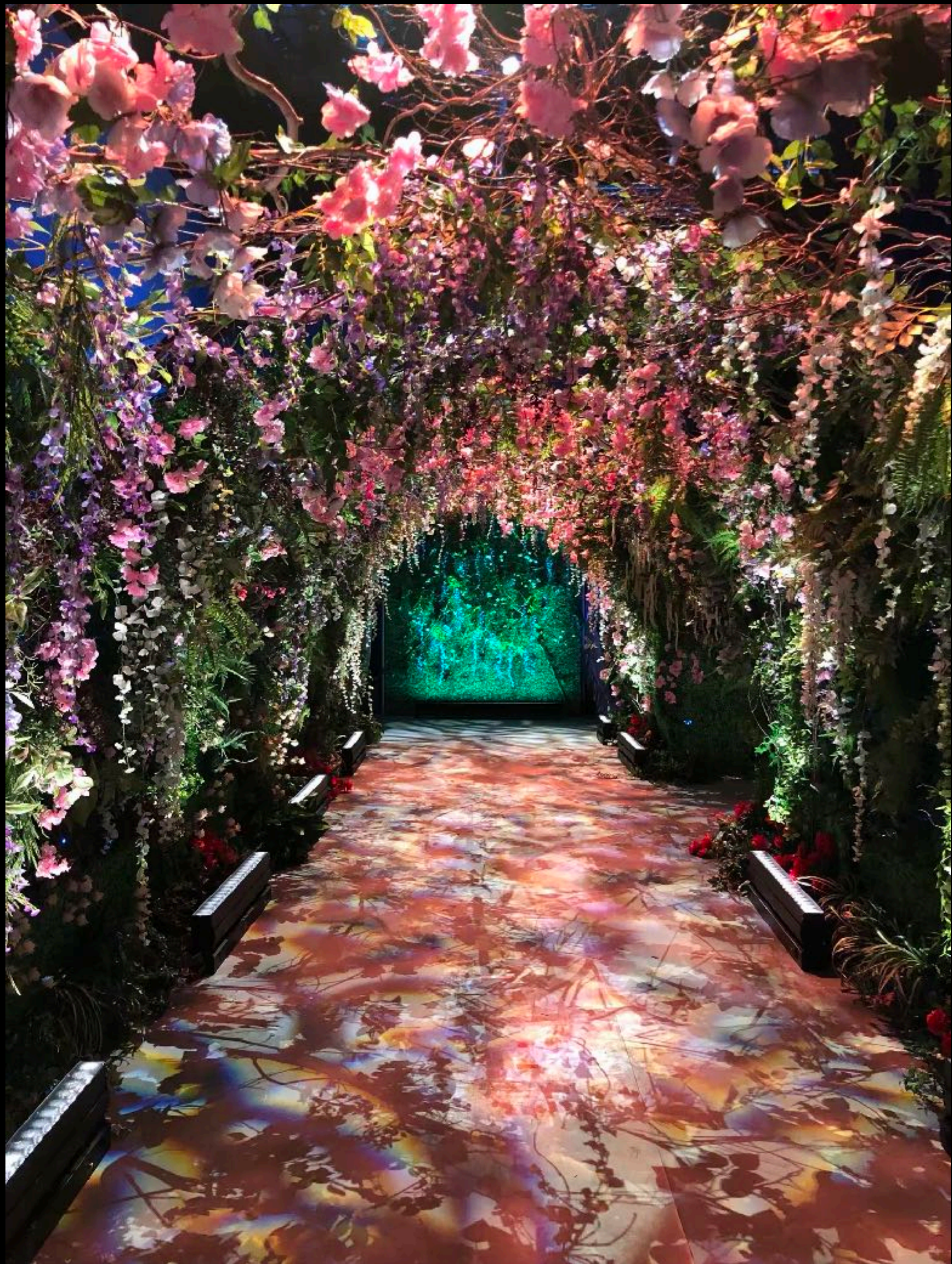














THE DISRUPTION WITH SOPHIE IWOBİ

Waystar Royco Offices location

Kendall's apartment location

The Disruption with Sophie Iwobi















THE **DISRUPTION** WITH SOPHIE IWOB

