



2 0 2 3   A W A R D S  
C O N S I D E R A T I O N

The background of the entire page is a surreal landscape. A man in a light-colored suit is seated on a small, arched wooden bridge, playing a dark upright piano. The bridge spans a calm river. The sky is a vibrant mix of orange, pink, and blue, suggesting a sunset or sunrise. In the background, there are silhouettes of trees on the left and several utility poles with power lines on the right. The foreground is filled with tall, golden-brown grasses and some red flowers. The overall mood is dreamlike and artistic.

# ADELE: I DRINK WINE

---

PRODUCTION DESIGN BY LIAM MOORE

DIRECTED BY JOE TALBOT



Joe Talbot's treatment for 'I Drink Wine' hit the tone of the song - bittersweet, theatrical and ambitious. A meandering journey down a river encountering technicolor tableaus and synchronized swimming sequences.

When developing the look and feel, it was imperative to Joe and I to play into the nostalgic tone of the video using practical sets and rich colors. We utilized those tools to accomplish both a timeless and contemporary feel throughout.

Shooting at the iconic Paramount Pictures tank, we embraced the scale and magic of old Hollywood musicals. By the end we reveal the artifice, breaking the fourth wall and showing the audience the reality behind the fantasy.



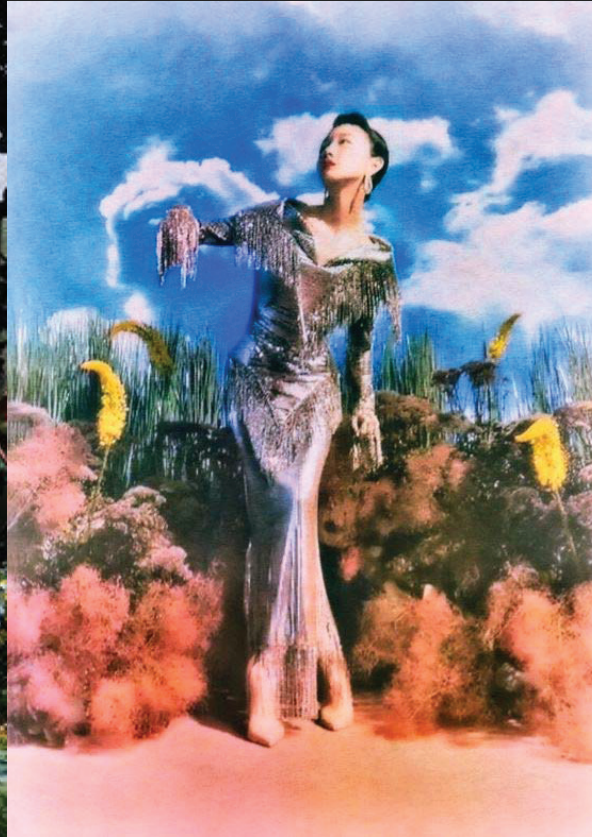
*VIEW PROJECT*



“Soaking it all up for fun,  
But now I only soak up wine”











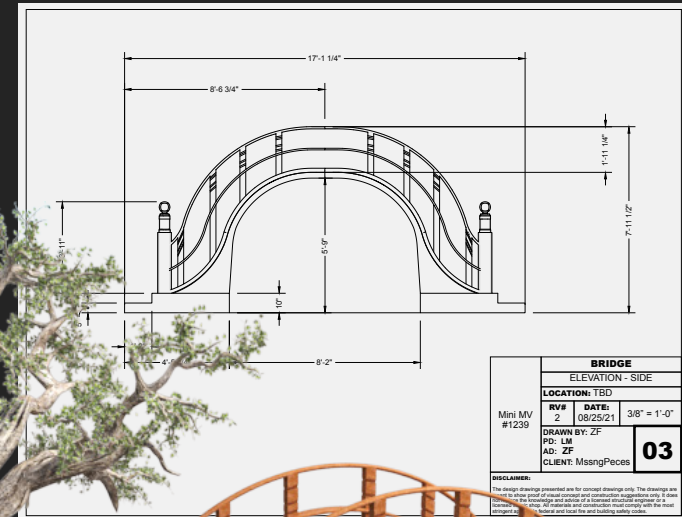








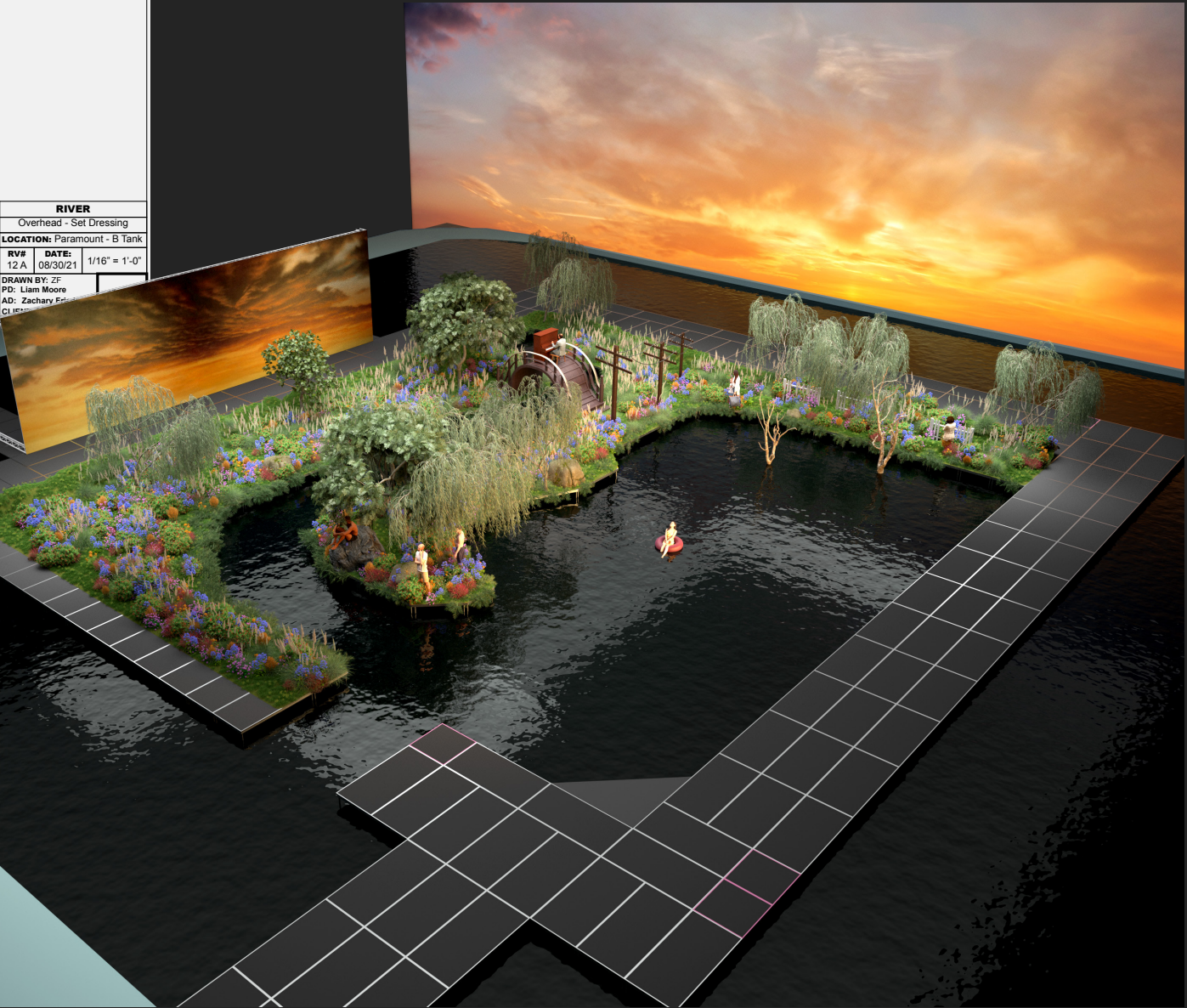
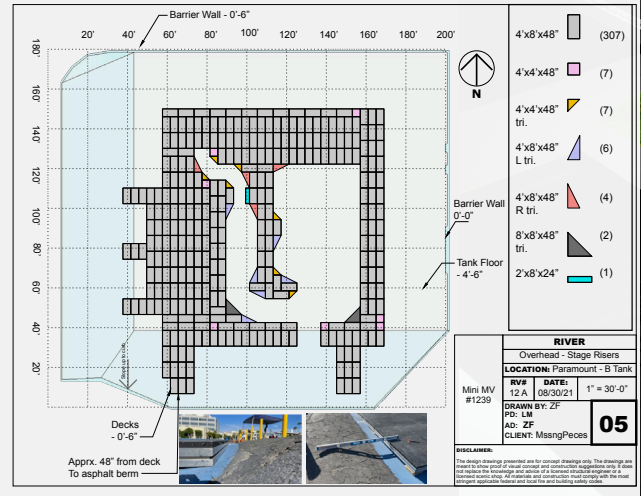








RIVER		
Overhead - Set Dressing		
LOCATION: Paramount - B Tank		
RV#	DATE:	1/16" = 1'-0"
12 A	08/30/21	
DRAWN BY: ZF		
PD: Liam Moore		
AD: Zachary F...		
CLIENT: ...		
DISCLAIMER:		







RENDERINGS BY ZACHARY FRIEDMAN







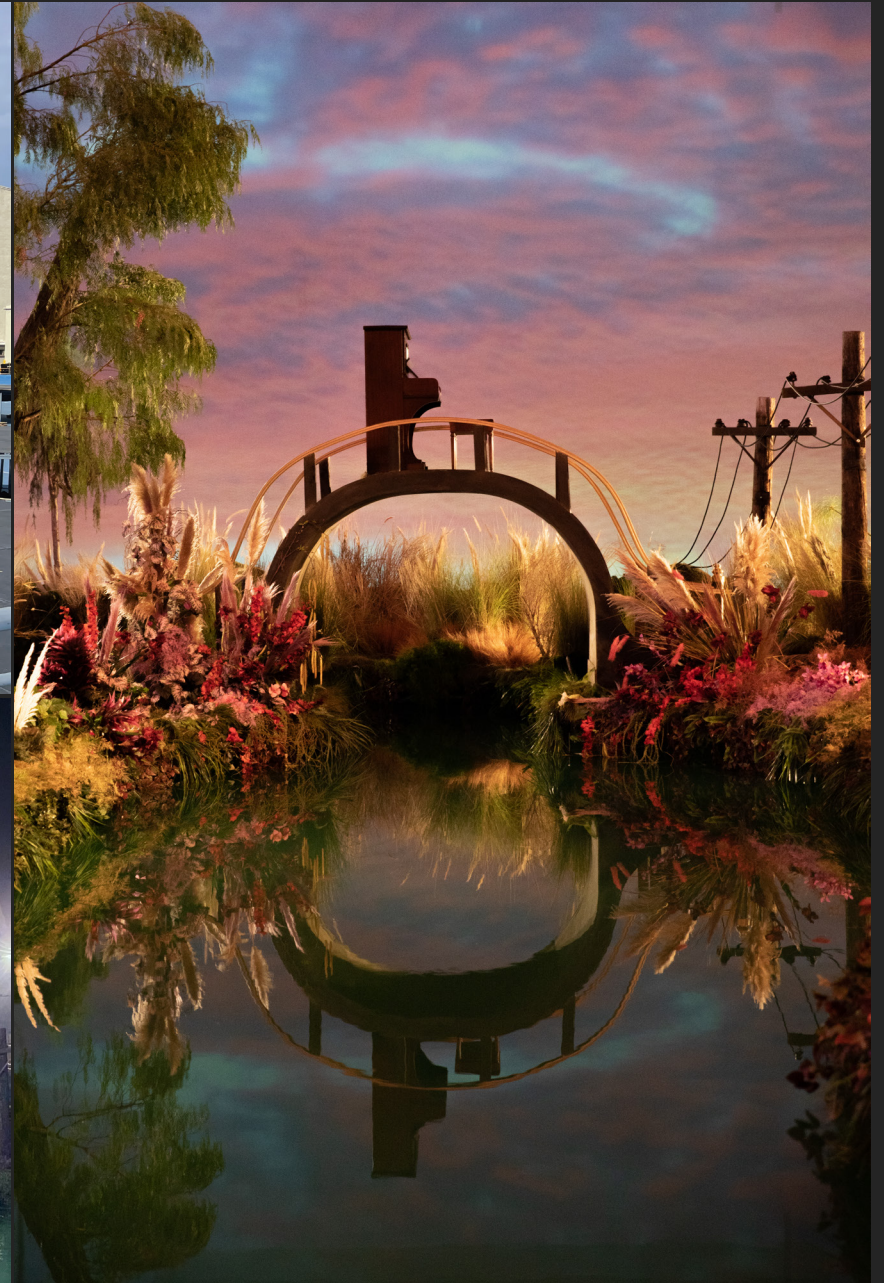
“In these crazy times I hope to find  
Something I can cling on to”





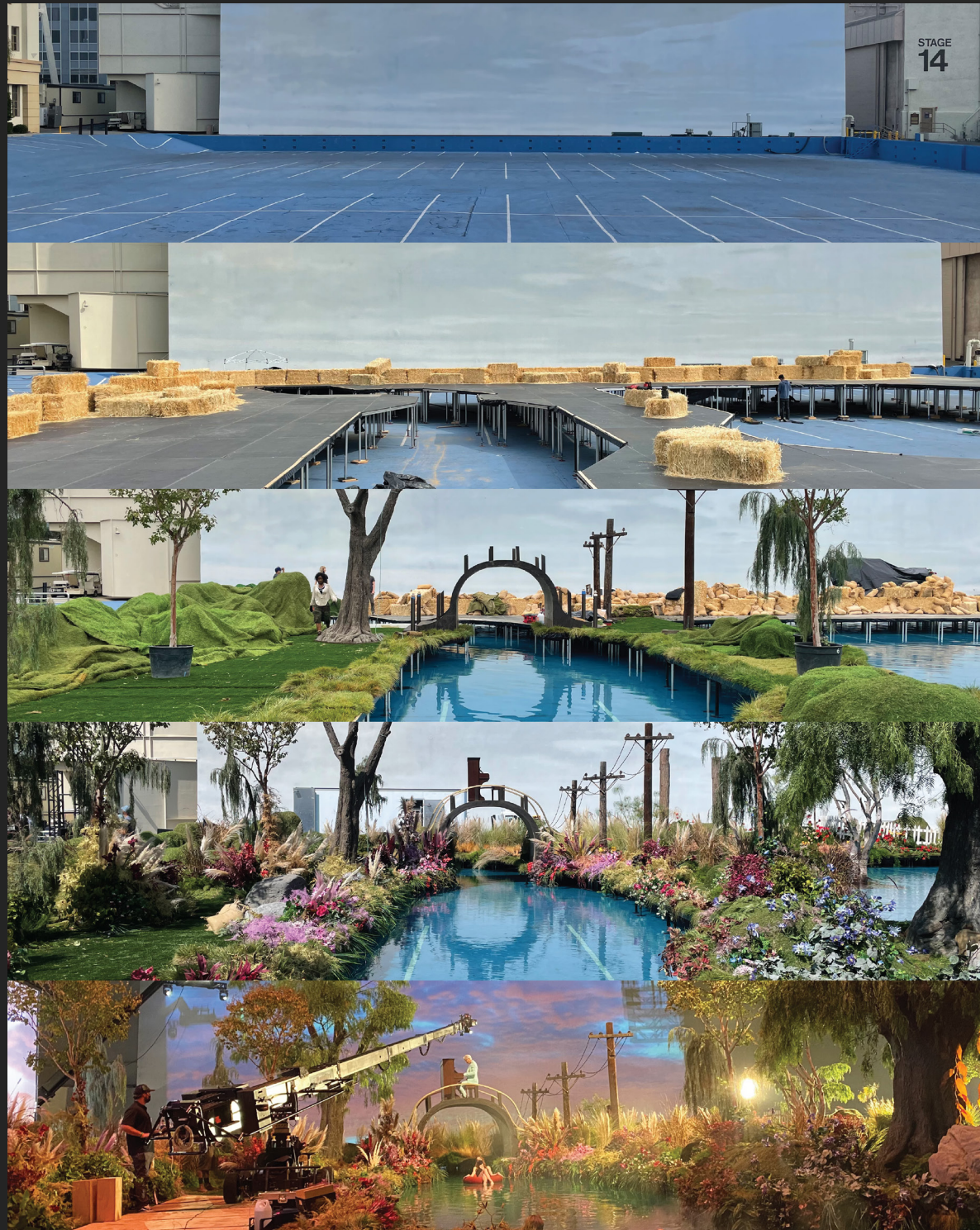
 *VIEW BTS VIDEO*





SET PHOTOS BY CAROLINE WALLIS







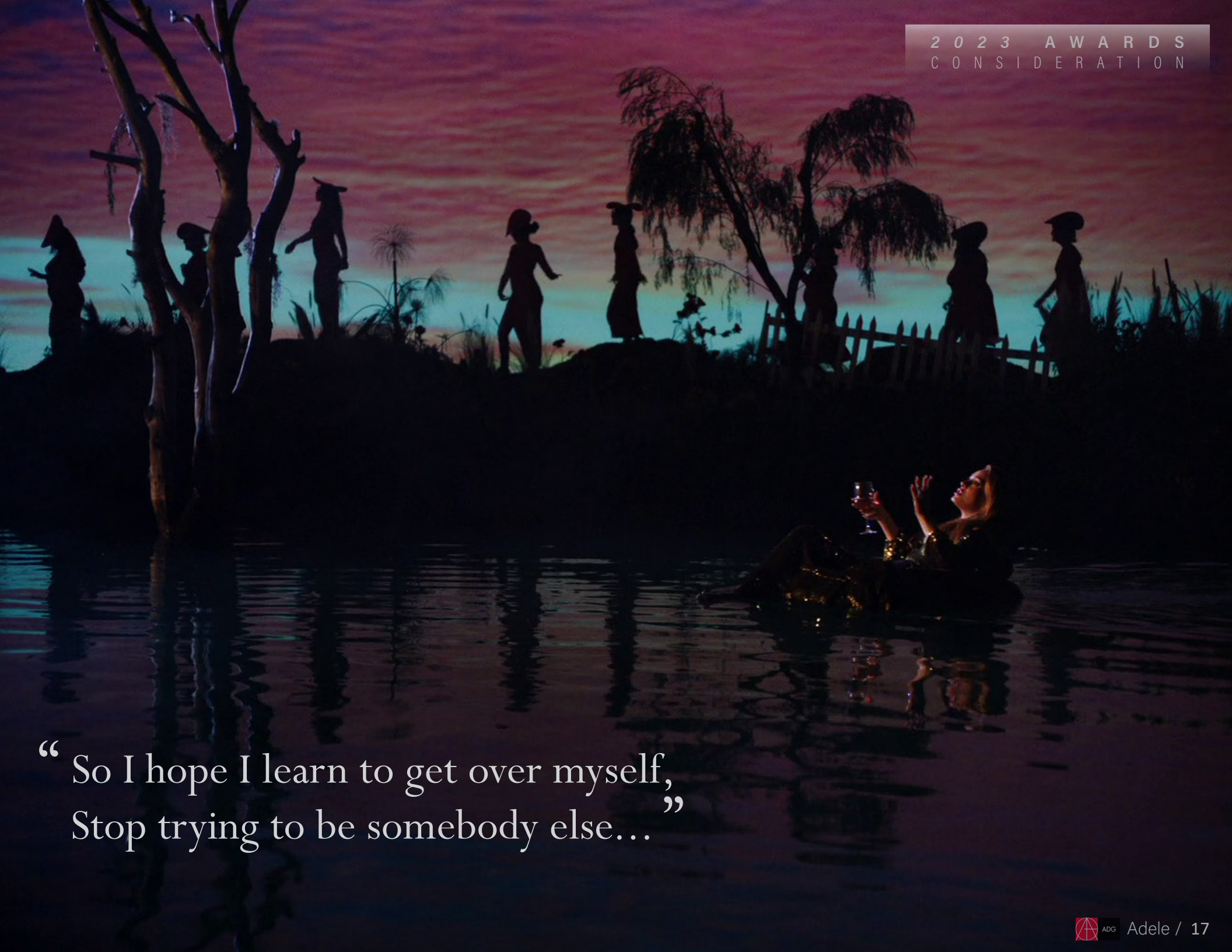


SET PHOTOS BY CAROLINE WALLIS







A surreal scene at sunset. In the foreground, a woman is floating in a body of water, holding a glass of wine and looking up. In the background, a dark silhouette of a hill features several people in various poses, some wearing hats. A white picket fence runs across the middle ground. The sky is a mix of orange, pink, and blue, with the sun low on the horizon. The water reflects the sky and the silhouettes.

“So I hope I learn to get over myself,  
Stop trying to be somebody else...”









SET PHOTOS BY CAROLINE WALLIS





SET PHOTOS BY CAROLINE WALLIS







“ But the higher we climb  
Feels like we’re both none the wiser ”





SET PHOTOS BY CAROLINE WALLIS







# ADELE: I DRINK WINE

---

2 0 2 3   A W A R D S  
C O N S I D E R A T I O N

PRODUCTION DESIGN BY LIAM MOORE

DIRECTED BY JOE TALBOT

**ART DIRECTOR**

ZACHARY FRIEDMAN

**SET DECORATOR**

JAIME BEEBE

**GREENSPERSON**

BRITTANY ASCH

**ART COORDINATOR**

MEGAN MANTIA