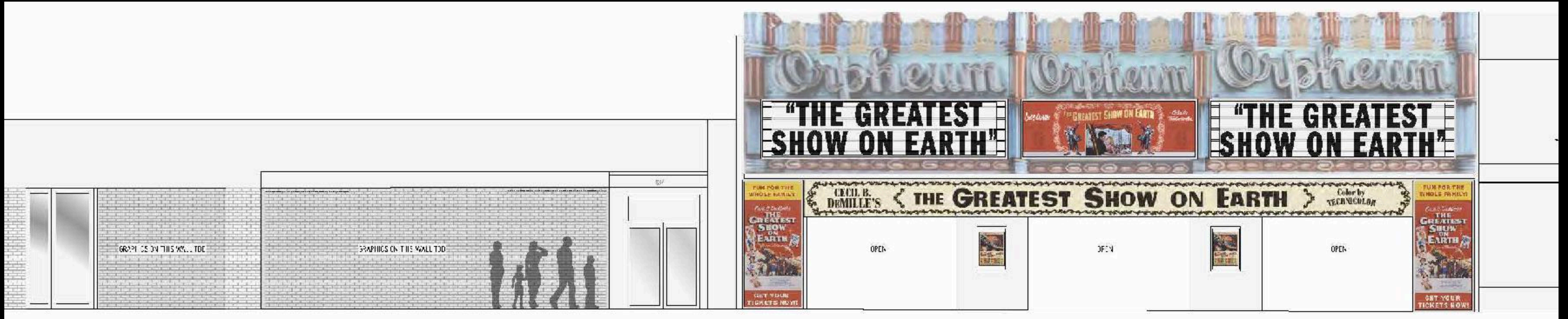


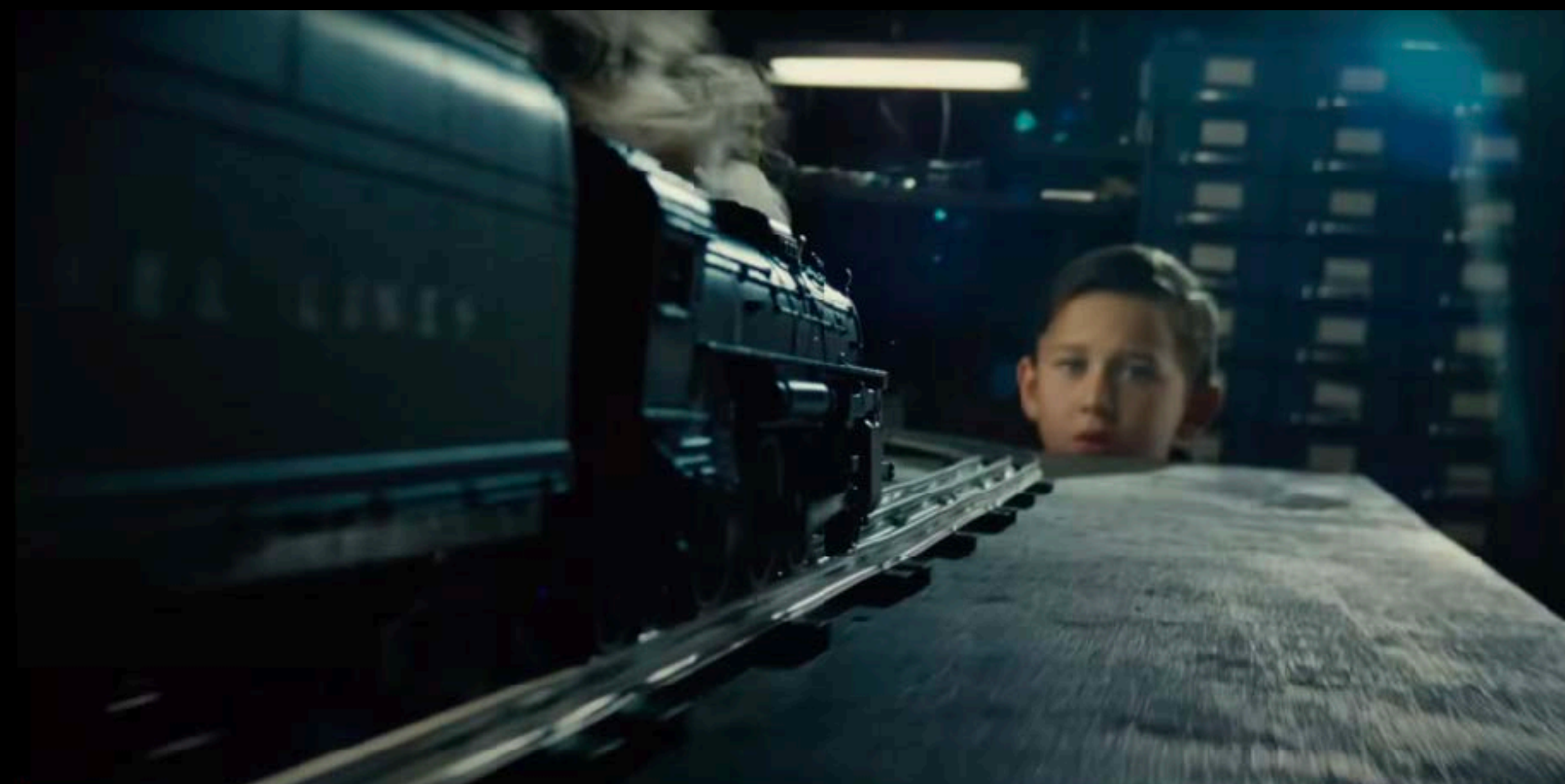
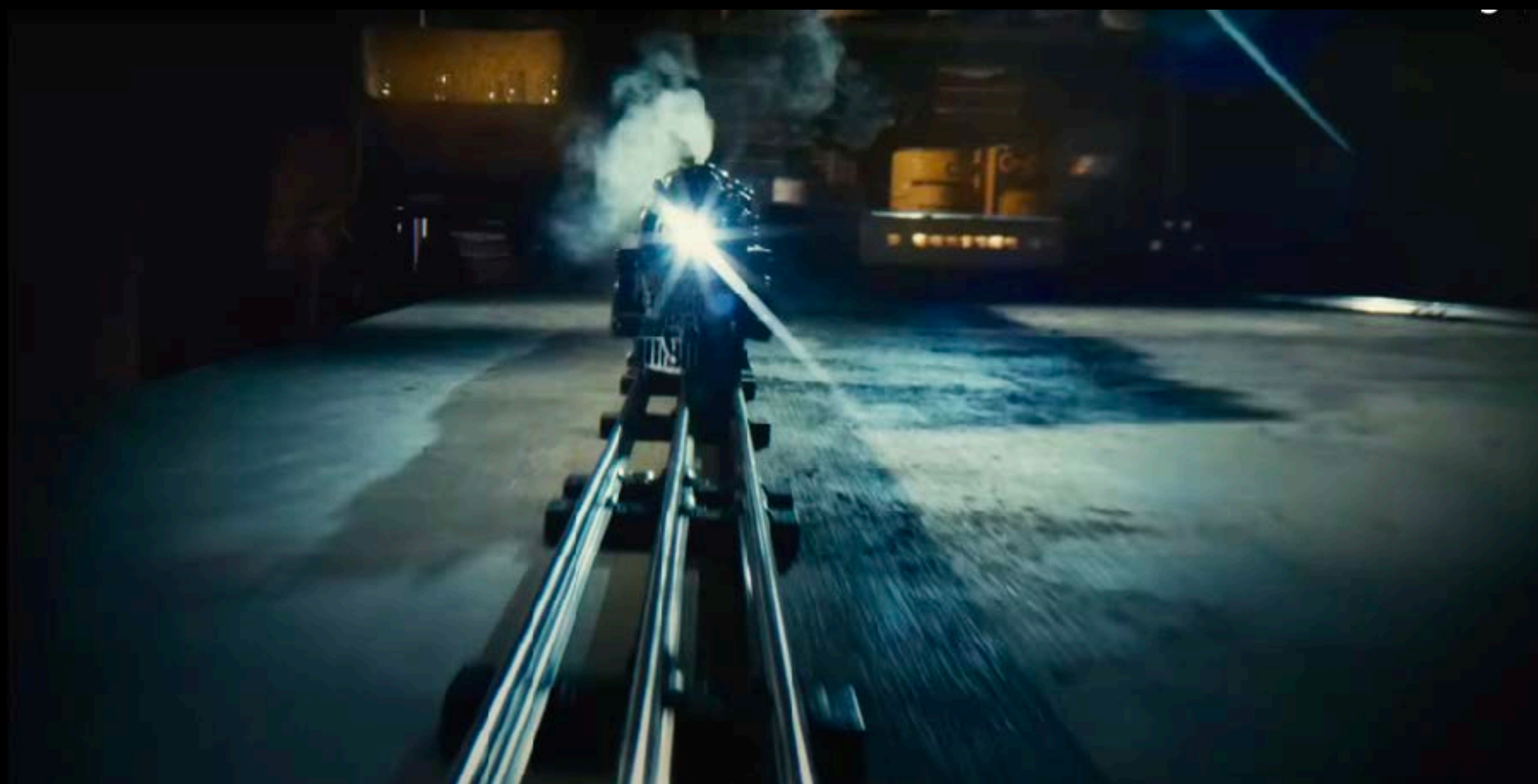


THE FABELMANS









LIVING ROOM



FRONT WINDOWS



DINING ROOM



KITCHEN



KITCHEN



STAIRWAY



DOOR SCHEDULE				
	WIDTH	HEIGHT	TYPE / NOTES	FINISH
(D1)	2'-8"	6'-8"	2-pnl - to porch	Paint
(D2)	3'-0"	6'-8"	4-pnl w/ sunburst. Raised threshold.	Paint
(D3)	2'-8"	6'-8"	2-pnl - to garage	Paint
(D4)	2'-6"	6'-8"	2-pnl interior	Paint
(D5)	2'-6"	6'-8"	2-pnl interior	Paint
(D6)	2'-6"	6'-8"	2-pnl interior	Paint
(D7)	2'-6"	6'-8"	2-pnl interior - upstairs landing	Paint

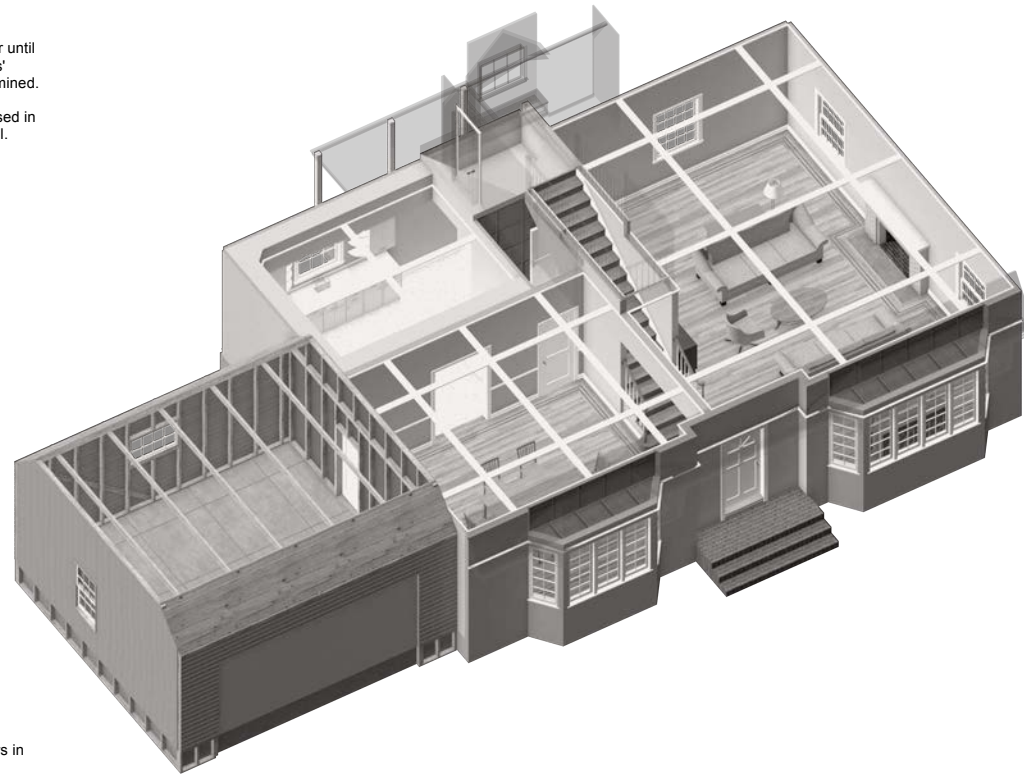
NOTE: Ovolo sticking typ. on door panels. Hardware as directed.

WINDOW SCHEDULE				
	WIDTH	HEIGHT	TYPE	GLAZING
(w1)	3'-2"	2'-10"	Fixed 6-lite	3/16" clear tempered
(w2)	3'-2"	4'-2"	8/8 as single-hung	
(w3)			8/8 as single-hung	
(w4)			8/8 as single-hung	
(w5)	1'-11"	5'-0"	As 10-lite casement	
(w6)			Fixed 10-lite	
(w7)			Fixed 10-lite	
(w8)			Fixed 10-lite	
(w9)			Fixed 10-lite	
(w10)			As 10-lite casement	
(w11)			As 10-lite casement	
(w12)			Fixed 10-lite	
(w13)			Fixed 10-lite	
(w14)			Fixed 10-lite	
(w15)			As 10-lite casement	
(w16)	3'-3"	3'-0"	3/3 as single-hung (landing)	
(w17)	2'-6"	4'-2"	6/6 as single-hung	
(w18)	3'-8 1/2"	2'-3"	Fixed 8-lite	

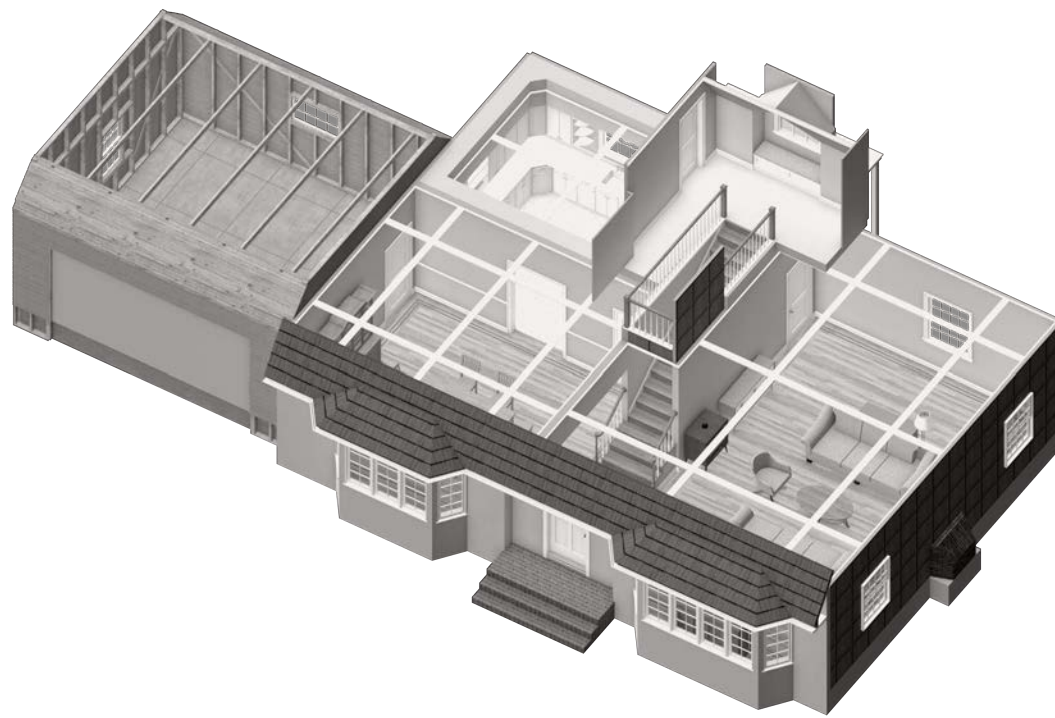
NOTE: Single-hung & casement windows don't need to be practical.

Hold on this door until
logistics of 'cross'
scene are determined.
Leaf will be re-used in
location plug wall.

Matches windows in
Upstairs set.

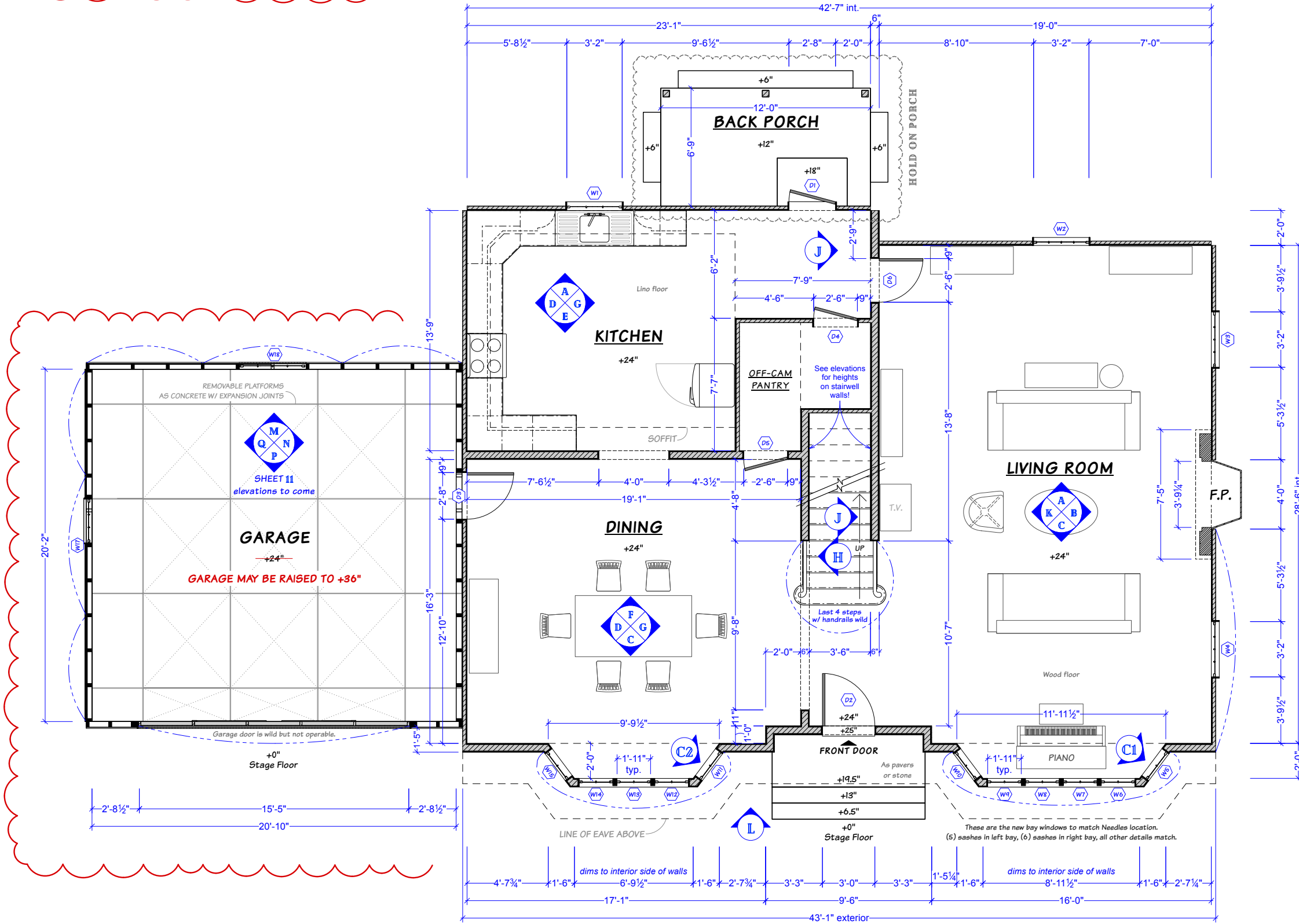


3 3D Dollhouse View

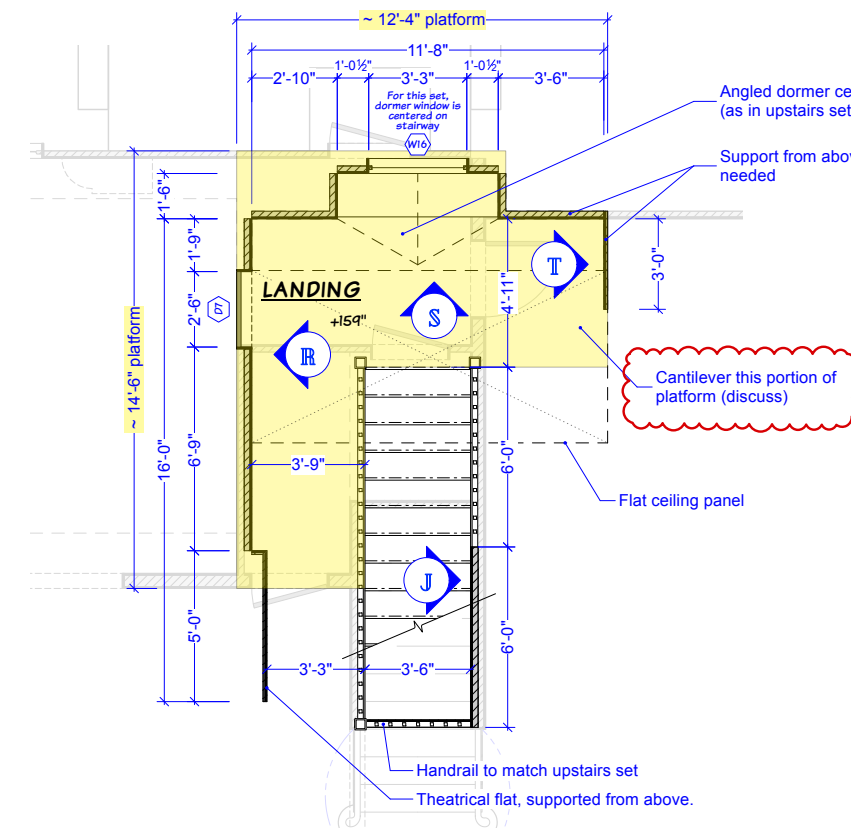


4 3D Dollhouse View

Drawing Schedule	
1	Technical Plan
2	Flooring Plan
3	RCP & Trim Details
4	Elevations
5	Exterior Elevation / Roof
6	Window Details
7	Bay Window Details
8	Fireplace Details
9	Kitchen Cabinet Details
10	Stair Details
11	Garage Elevations



1 Technical Plan - New Jersey Downstairs
Scale: 1/4" = 1'-0"



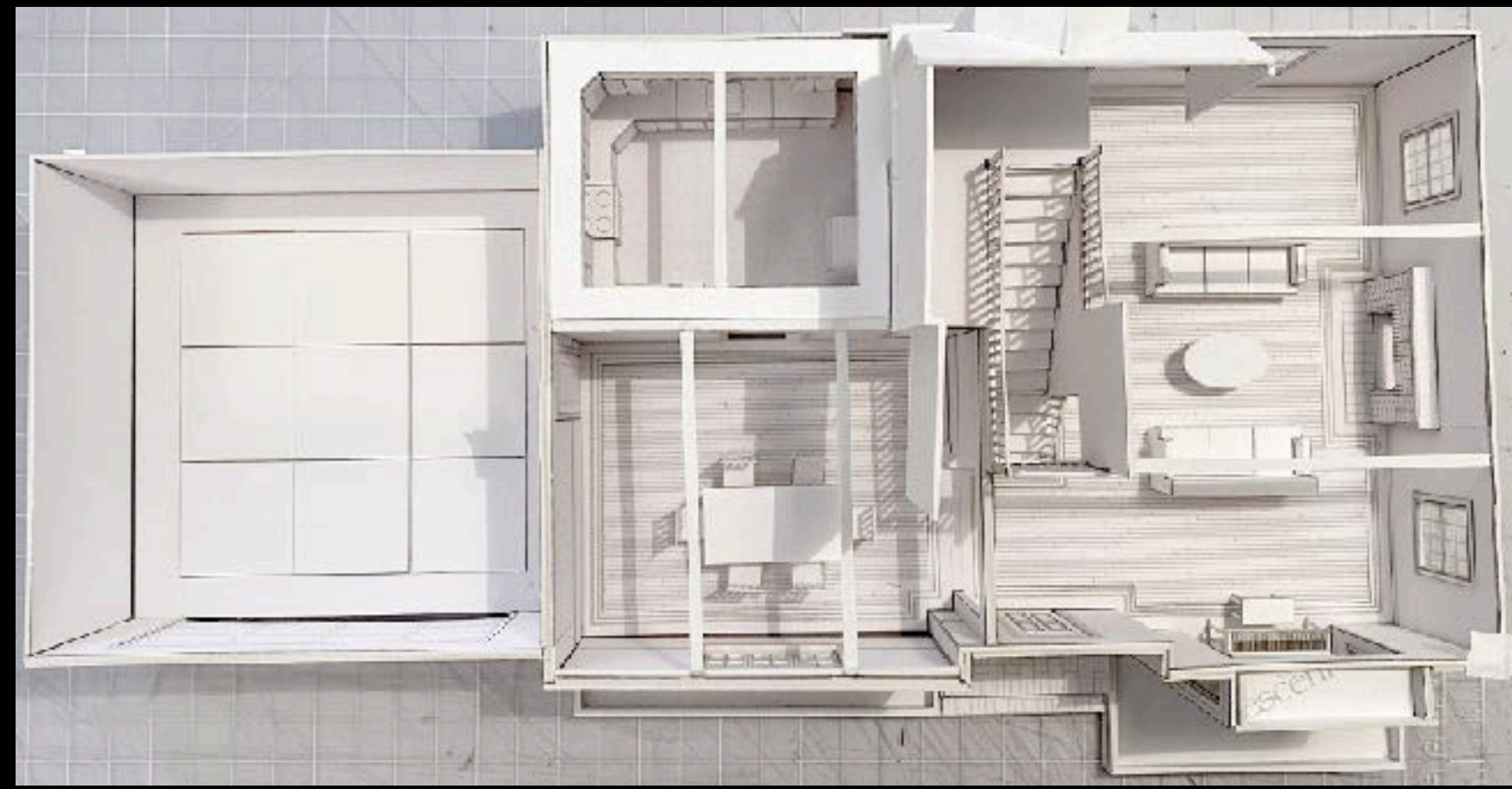
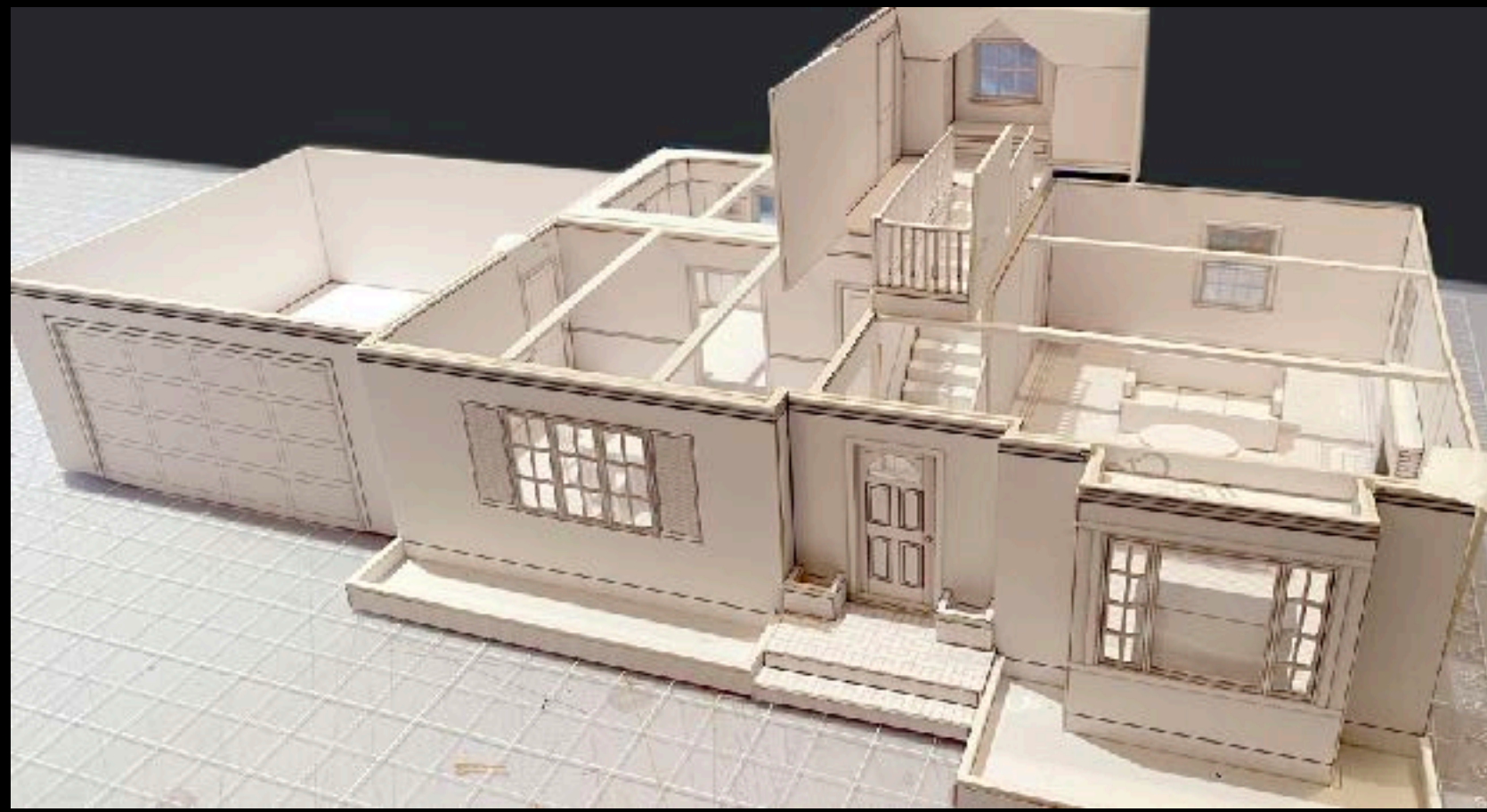
2 2nd Floor Landing - Plan
Scale: 1/4" = 1'-0"

Entire set is on +24" platform which matches perimeter walls. Note removable platform modules in garage.

Ceiling height is 10'-0" from +24" platform, except for kitchen which is at 9'-0".

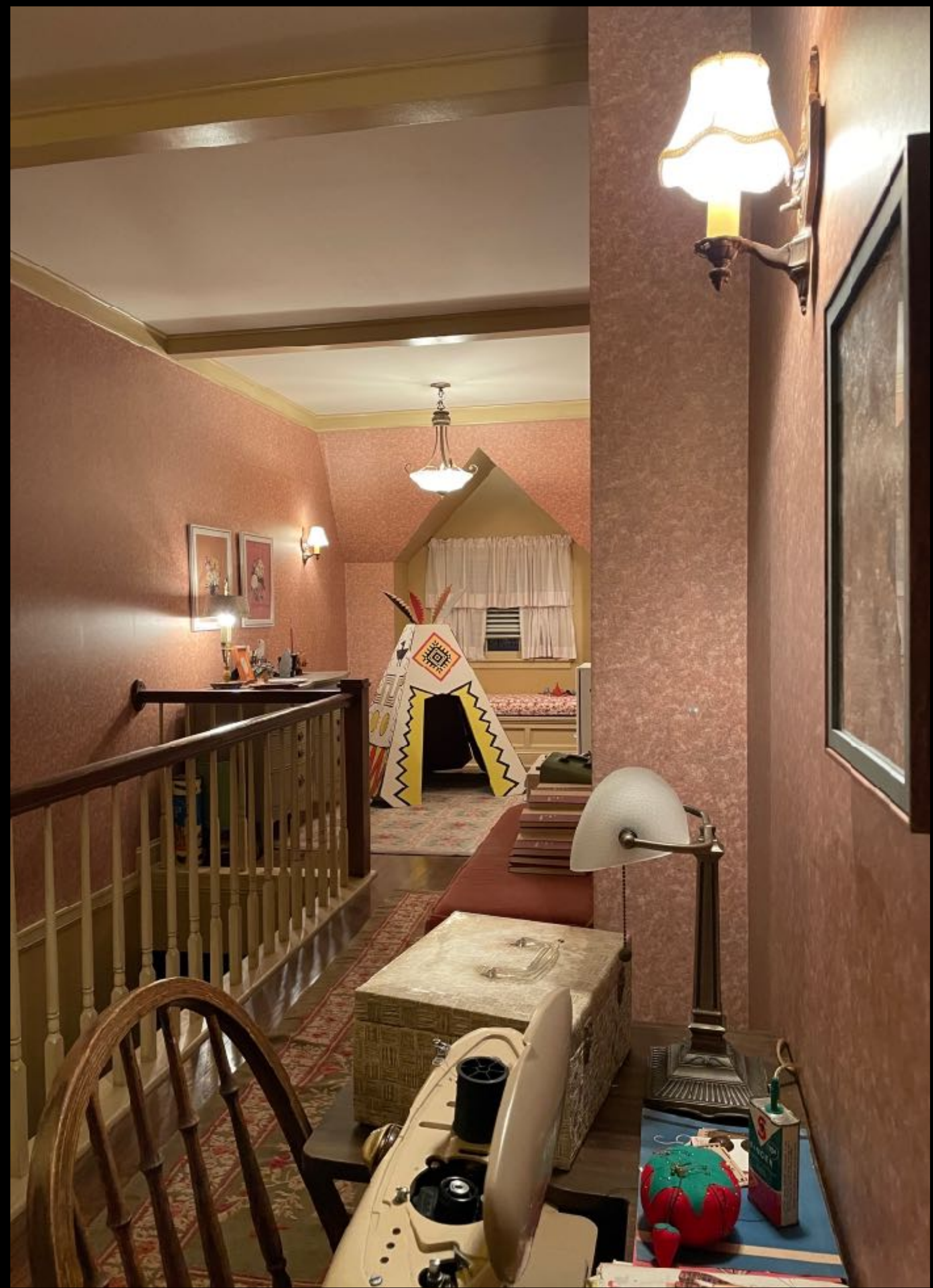
Walls of finished front facade (L) go down to stage floor. Additional exterior elements (grass, stone walkway, greens, etc.) to come.













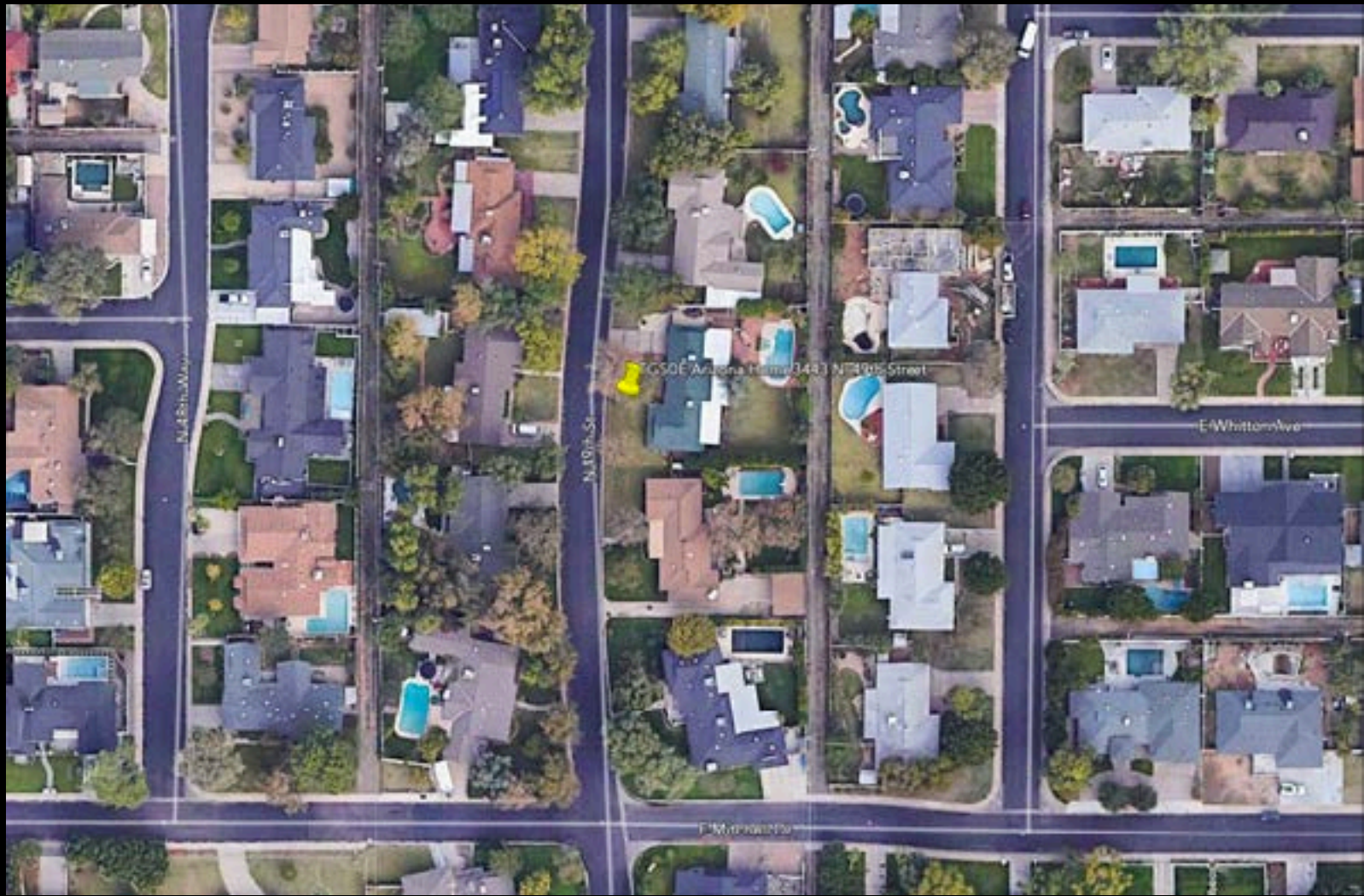




3443 N. 49th. Street, Phoenix, Arizona



LIFE November 2006



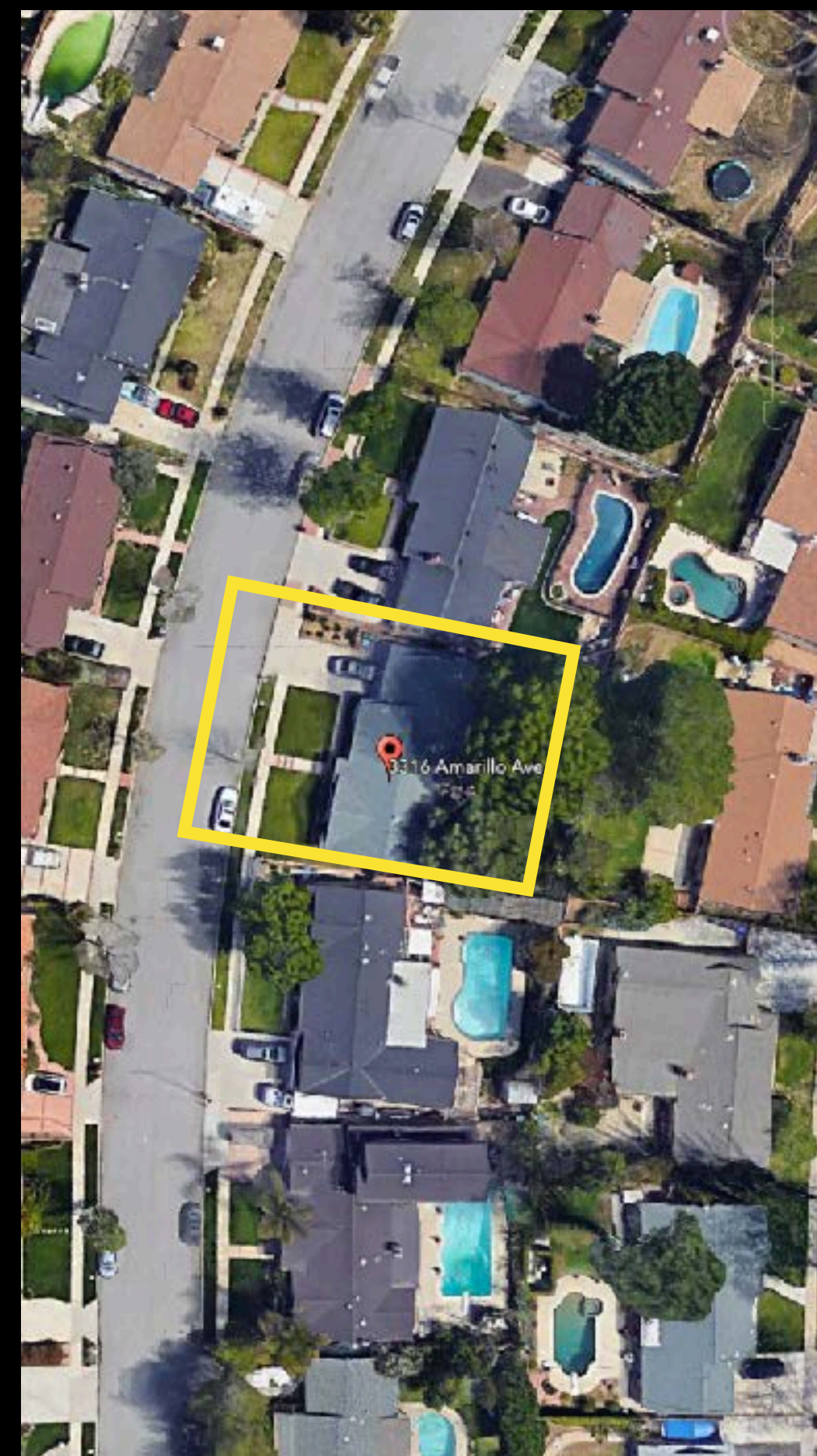
Property Details
3443 N. 49th. Street, Phoenix AZ 85018
County: Maricopa
Lot Size: 14,052 Class: Single Family
Square footage: ~ 2086 Year Built: 1957

Photo: Leann Emmert, March 2021

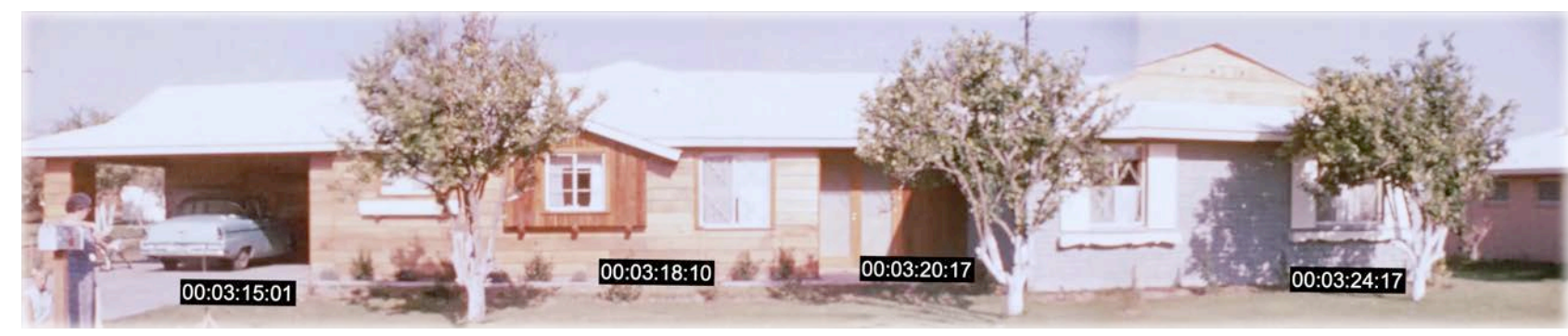
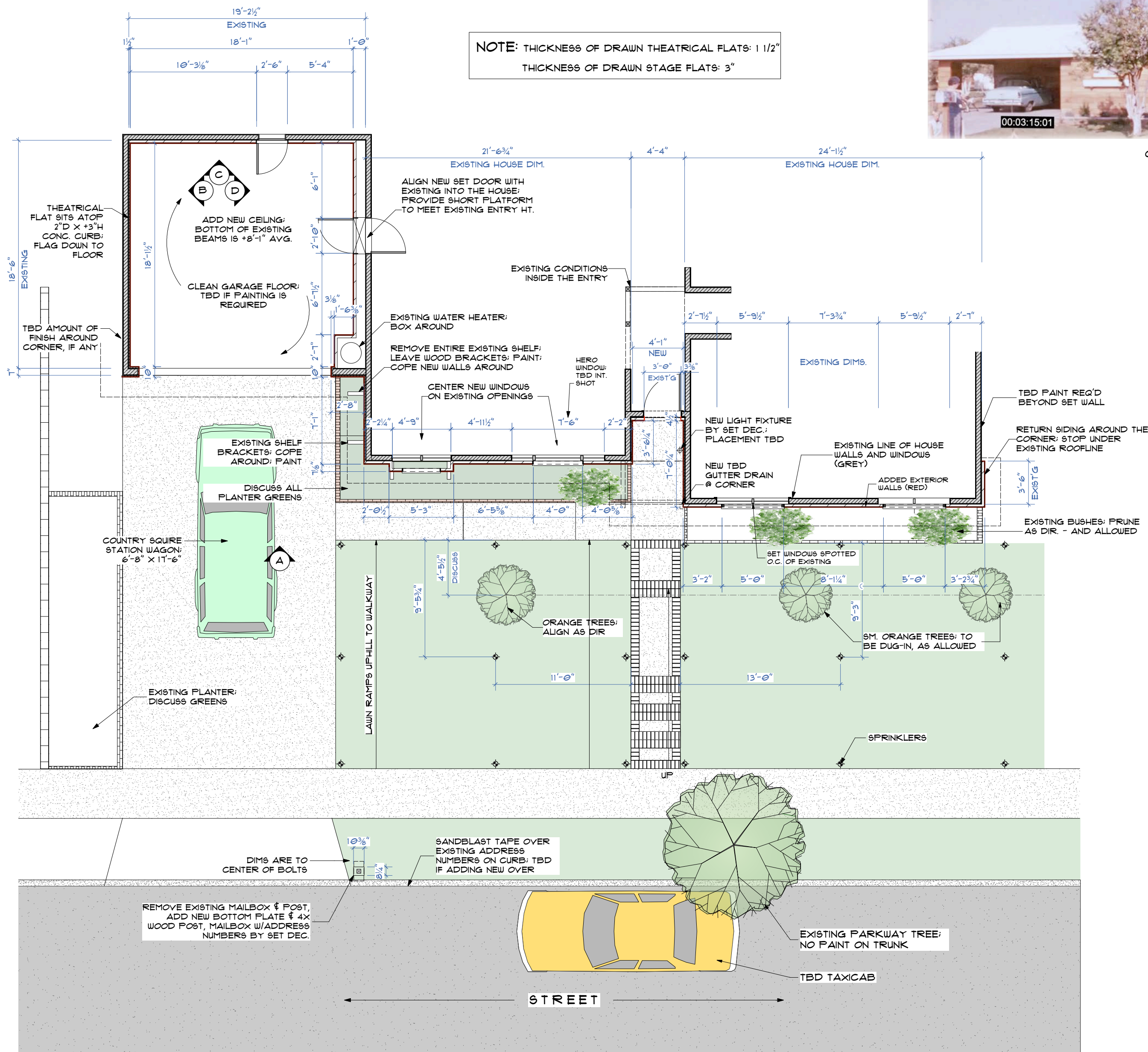


Photo composite STUDY, LA for Scottsdale, AZ with Camelback Mountain [L.P. 4.27.21]

aspect ratio: 1:1.85



3316 Marillo Avenue, Simi Valley



ORIGINAL PHOENIX, AZ. HOUSE FACADE - EARLY 1960'S



ORIGINAL PHOENIX, AZ. HOUSE FACADE - TODAY



LOCATION HOUSE FACADE - SIMI VALLEY



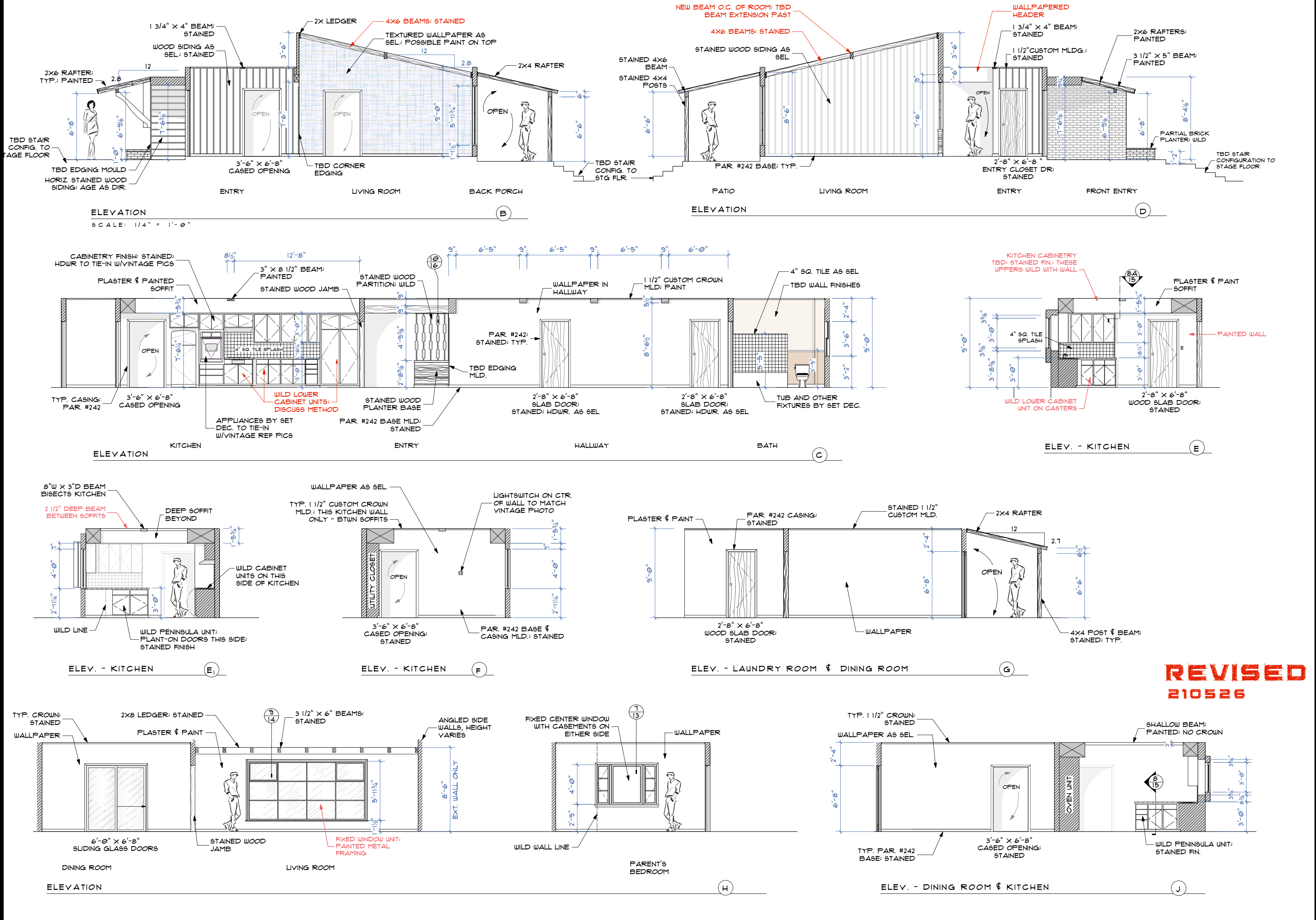
ILLUSTRATION OF AUGMENTED LOCATION HOUSE



COUNTRY SQUIRE STATION WAGON













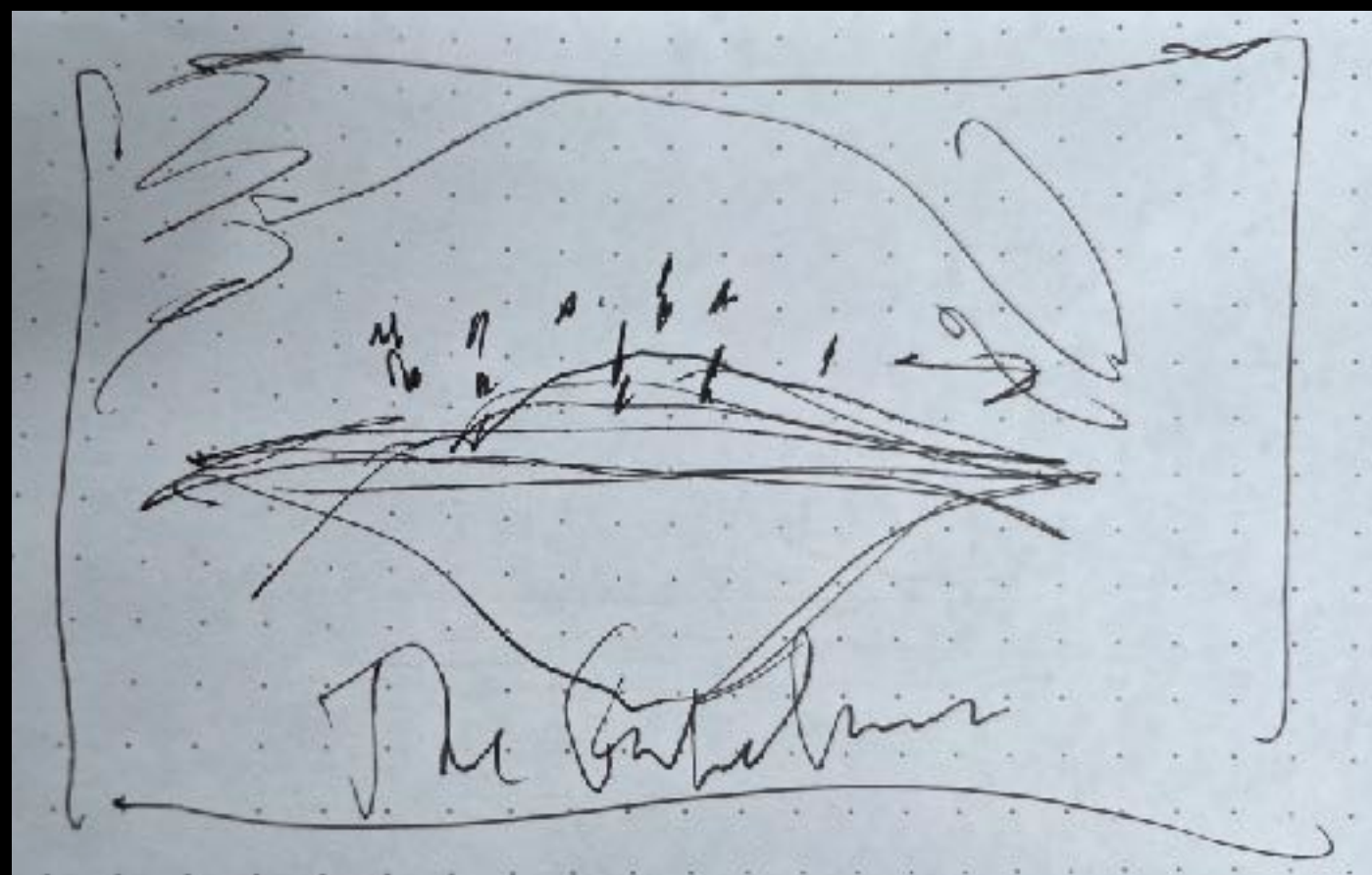
















MONTTE'S CAMERA SHOP
KIT CAMERA STORE No3

FUN
FOR THE
ENTIRE
FAMILY

CASTLE FILMS
FOR ALL HOME MOVIE PROJECTORS[®]

8^m HOME MOVIES

CARTOONS • COMEDIES • WESTERNS • ADVENTURE
SCIENCE-FICTION • SPORTS • STORY CLASSICS • NEWS SPECIALS



Monte's CAMERA SHOP
FOR EVERYTHING PHOTOGRAPHIC

Kodak
PHOTOGRAPHIC
PAPER

Monte's CAMERA SHOP
FOR EVERYTHING PHOTOGRAPHIC

Kodak
PHOTOGRAPHIC
PAPER

ARIZONA STATE BOARD OF EQUALIZATION

SELLER'S PERMIT

ACCOUNT NUMBER
04/84 RL AD 14-688207

Monte's Camera Shop
Monte's Limited
1408 Centerville Street
Phoenix, Arizona

THIS PERMIT DOES NOT
AUTHORIZE THE HOLDER
TO ENGAGE IN ANY
BUSINESS UNLESS HE
KNOWS HOW TO DO SO
AND IS NOT A
PERSON OR FIRM
OR COMPANY OR
INDIVIDUAL

THIS PERMIT IS VALID UNTIL REVOKED OR
CANCELLED BUT IT IS NOT TRANSFERABLE
Not valid at any other address

RE 442-B Rev 7-1-74

DISPLAY CONSPICUOUSLY AT THE PLACE OF BUSINESS FOR WHICH ISSUED

















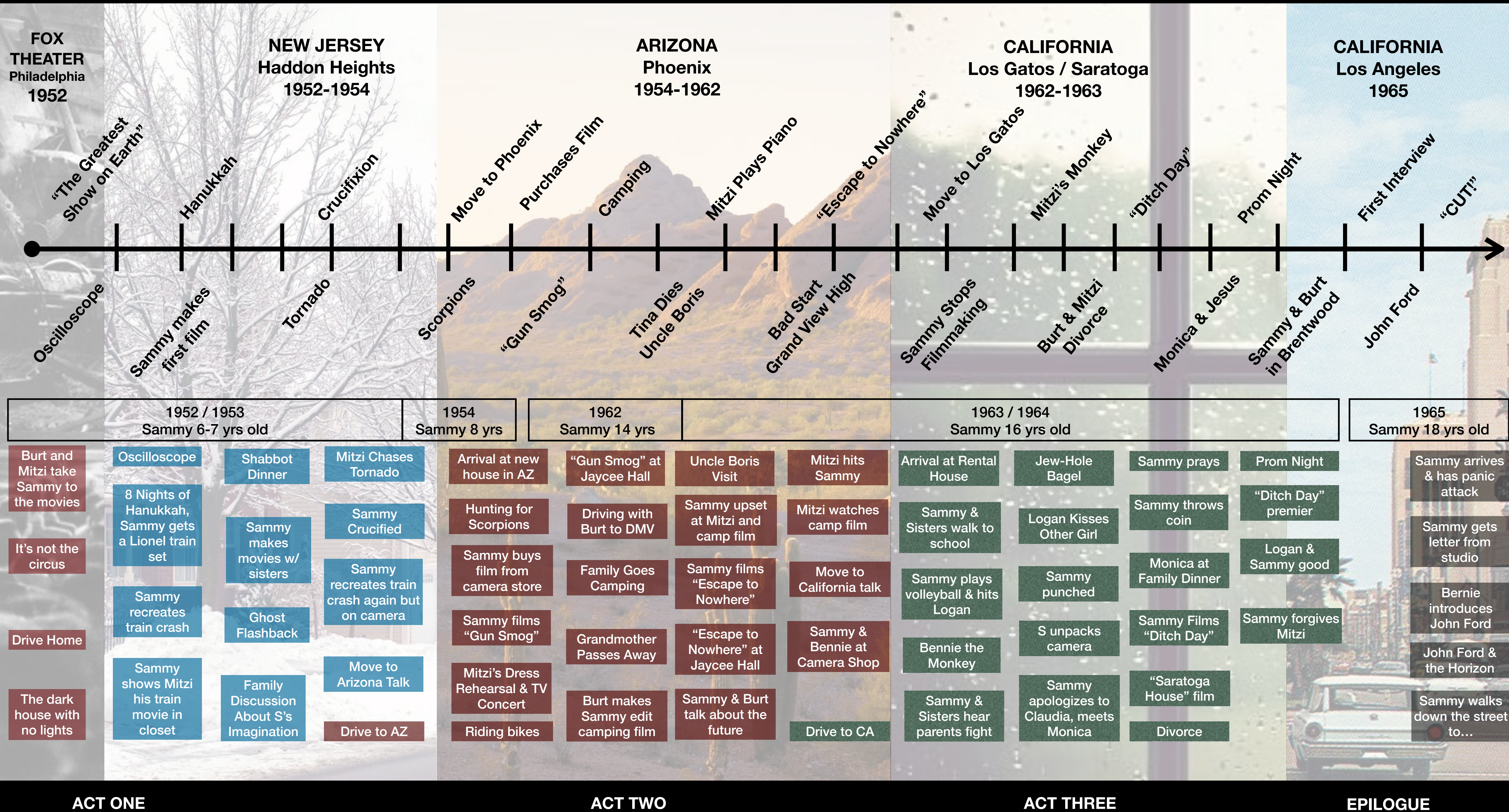






FABELMAN TIMESCAPE

CHERRY REVISIONS BREAKDOWN 9/13/21



A Steven Spielberg Story



PRODUCTION DESIGNER **RICK CARTER**

SUPERVISING ART DIRECTOR **ANDREW MAX CAHN**

SET DECORATOR **KAREN O'HARA**

ART DIRECTORS **LAUREN POLIZZI • DESMA MURPHY**

ASSIST. ART DIRECTORS **GORDON STOTZ • KATELYNN WHEELOCK**

SET DESIGNER **ANDY BROOMELL**

MODEL MAKER **DARCY PROVOST**

Jr. SET DESIGNER **DYLAN REED**

GRAPHIC DESIGNERS **ANDY CAMPBELL • CLINT SCHULTZ**

ART DEPT COORDINATOR **STEPHANIE FREY**

ART DEPT ASSISTANTS **AVA ANDERSON • KIAH HIXON**

RESEARCHER **MARGUERITE DAVIDSON**

CONSTRUCTION COORDINATOR **ANTHONY SYRACUSE**

FOR YOUR CONSIDERATION