



# **THE BUCCANEERS**

**PRODUCTION DESIGN | AMY MAGUIRE**





**NEW YORK**







SET PHOTO



SET PHOTO



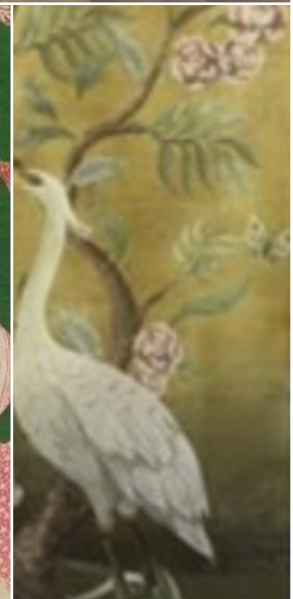
SET PHOTO



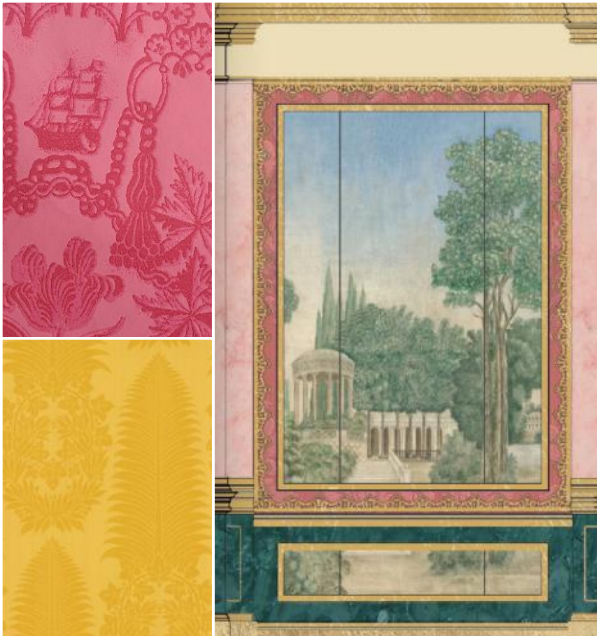
THE BUCCANEERS | NEW YORK | SET BUILD BEDROOM

PRODUCTION DESIGNER | AMY MAGUIRE

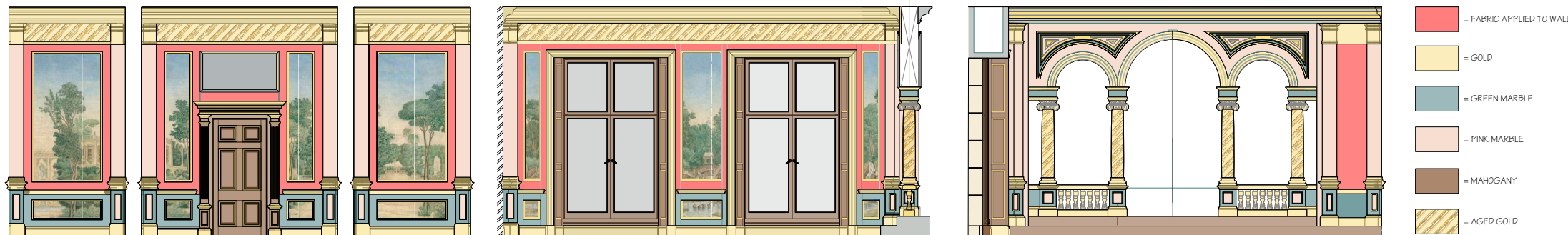
















SET PHOTO



SET PHOTO

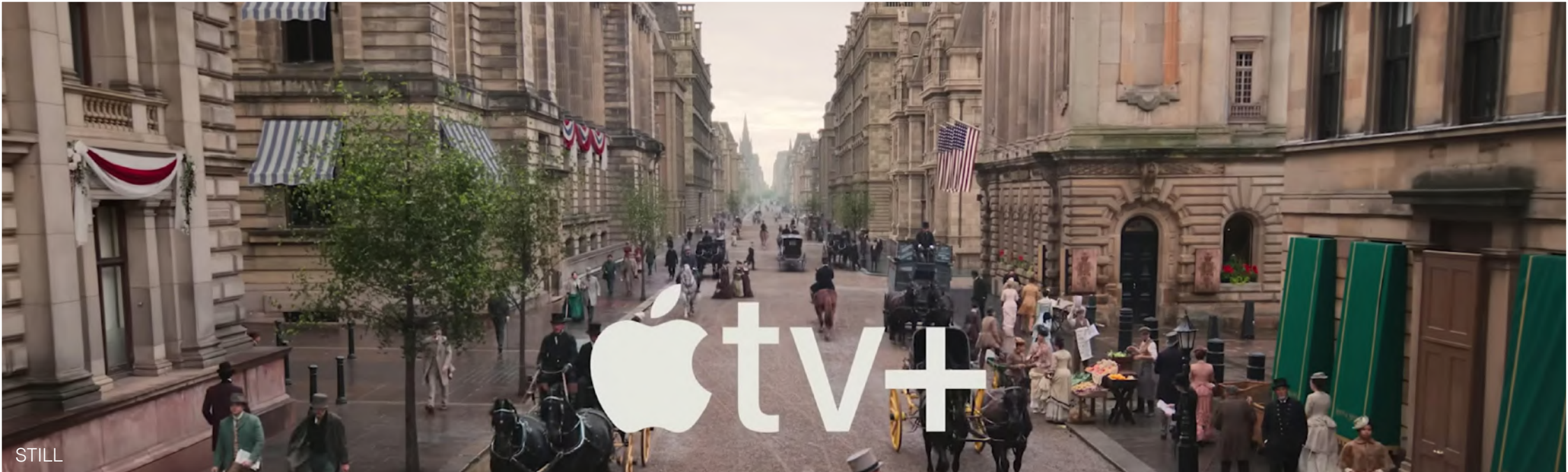


STILL



SET PHOTO





STILL



SET PHOTO



SET PHOTO

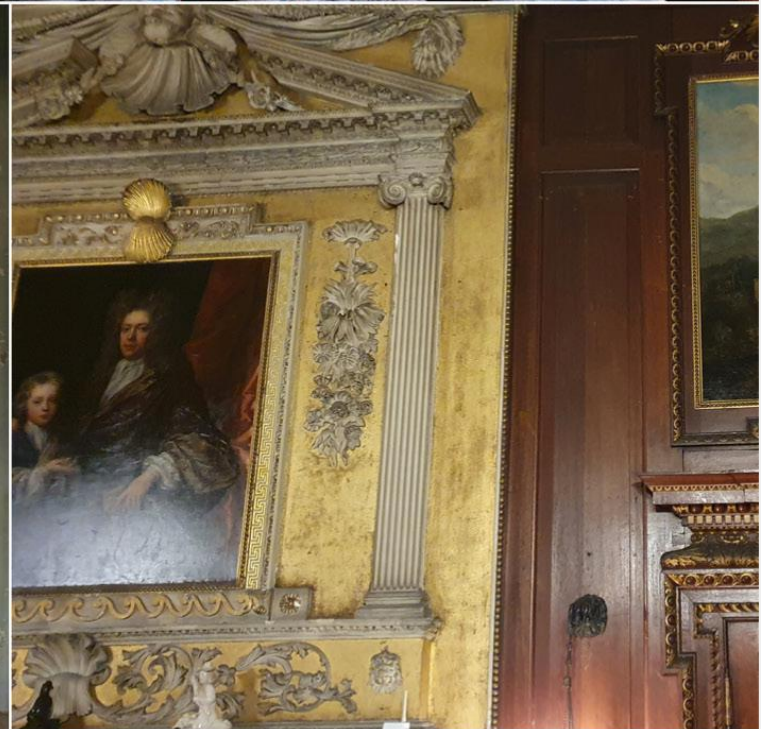
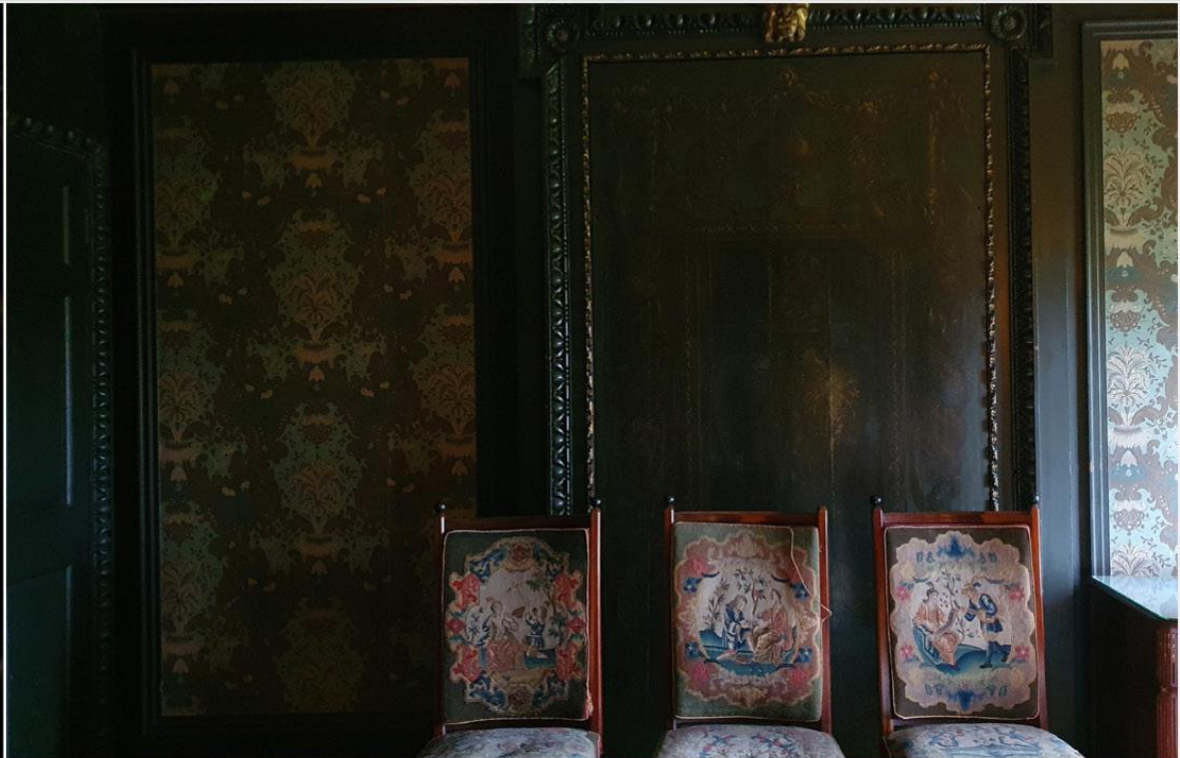


STILL



# LONDON TOWNHOUSE









STILL



SET PHOTO



STILL

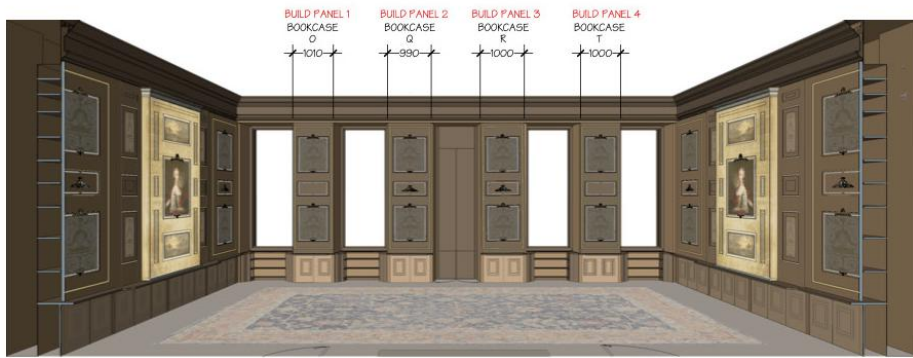


SET PHOTO

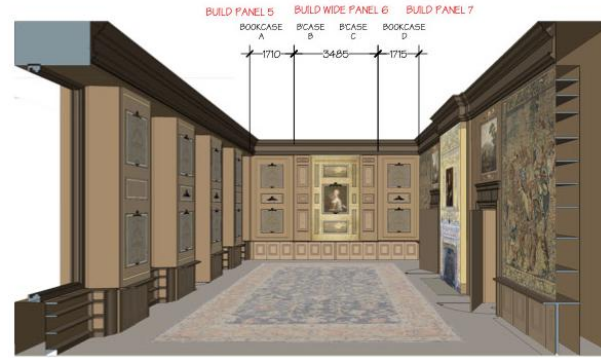




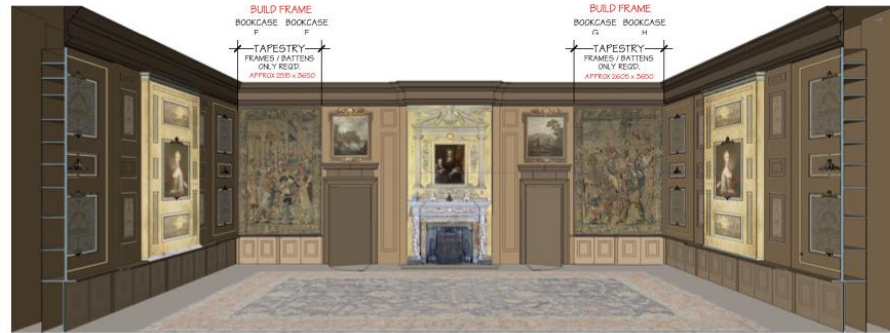




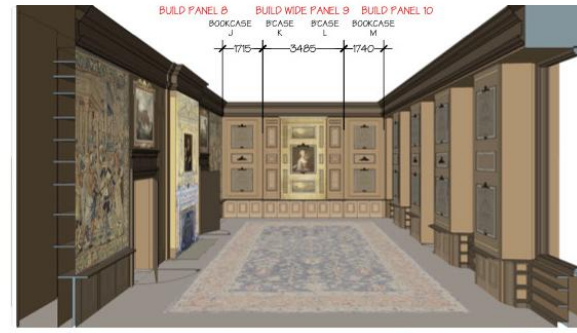
ELEVATION O - T



ELEVATION A - D

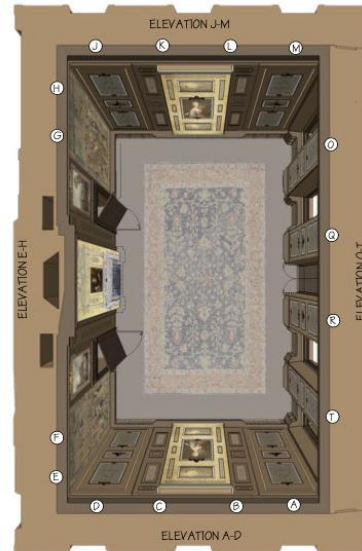


ELEVATION E - H

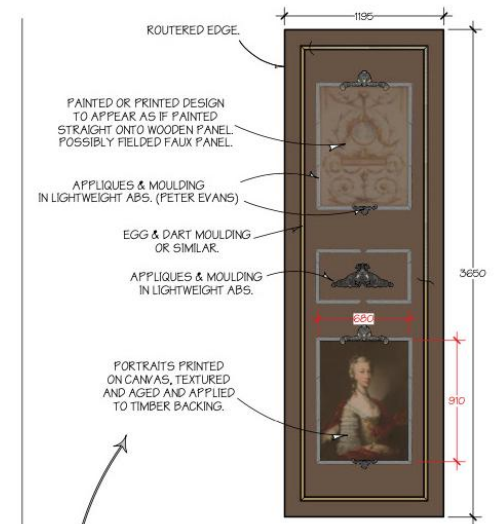


ELEVATION J - K

PLEASE ADD 50mm TO EACH PANEL SO THAT THEY WILL OVERSAIL BOOKCASES. SIZES GIVEN ARE INTERNAL MEASUREMENTS OF EXISTING BOOK CASES.



ALL PANELS TO BE AS LIGHTWEIGHT AS POSSIBLE. LOCATION APPROVED PLASTIZOTE TO BE FITTED BETWEEN ALL BUILD MATERIALS AND LOCATION TIMBER SHELVING.  
PANELS CAN REST ON EXISTING LEDGE - WILL NEED TO BE FIXED AT TOP (WEDGE TIMBER BATTENS INTO EXISTING BOOK SHELVES & FIX INTO BATTENS). PLASTIZOTE MUST BE USED BETWEEN WEDGES & LOCATION TIMBER.  
WILL NEED FRAMES OR BATTENS FOR TAPESTRIES PLEASE.

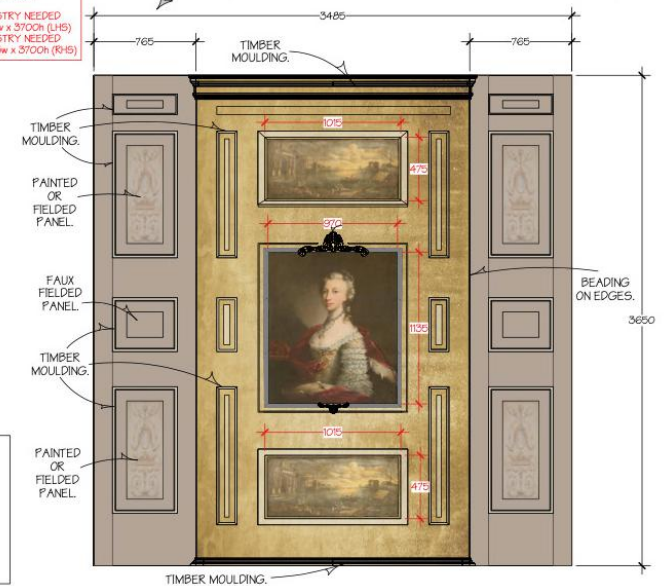


PRICE FOR -  
- WOODEN PANELS WITH ROUTERD EDGE.  
- EGG & DART MOULDING OR SIMILAR.  
- PAINTED IN BROWN WOODGRAIN WITH GOLD DETAIL.  
- PAINTED / PRINTED PANELS OR FAUX FIELD FAUX PANEL (SHOWN AT TOP).  
- ART DEPT TO PROVIDE PETER EVANS MOULDINGS.  
- ART DEPT TO SUPPLY PORTRAITS.

MAKE 8 OFF - SEE VARYING SIZES ON DRAWING.

PRICE FOR -  
- WOODEN PANELS WITH ALL BEADING & WOODEN MOULDINGS.  
- EGG & DART MOULDING OR SIMILAR.  
- PAINTED IN BROWN WOODGRAIN WITH GOLD DETAIL.  
- ART DEPT TO PROVIDE LANDSCAPE PANELS (SHOWN AT TOP & BOTTOM).  
- ART DEPT TO PROVIDE PETER EVANS MOULDINGS.  
- ART DEPT TO SUPPLY PORTRAITS.

MAKE 2 OFF



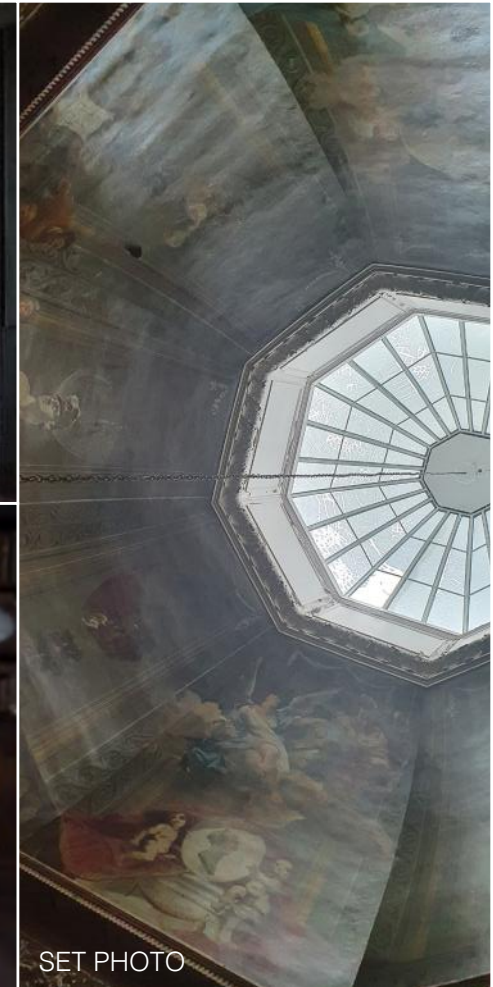




SET PHOTO



STILL



SET PHOTO



STILL



STILL



STILL



# TINTAGEL CASTLE









STILL



CONCEPT DRAWING



SET PHOTO





STILL



STILL



SET PHOTO

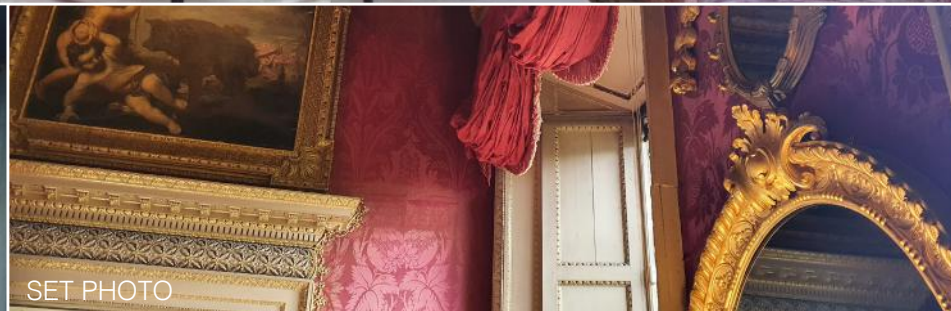


STILL





STILL



SET PHOTO



SET PHOTO



STILL





SET PHOTO



CONCEPT DRAWING



STILL







SET PHOTO Front Facade | Landscaping



CONCEPT DRAWING For VFX



SET PHOTO Back of Castle



STILL Art Studio Exterior



SET PHOTO Art Studio Interior

## THE BUCCANEERS | TINTAGEL CASTLE

TO BUILD THE WORLD OF TINTAGEL WE USED THE FRONT OF DRUMLANRIG CASTLE FOR THE DRAMATIC APPROACH, ADDING LANDSCAPING AND BLUE SHUTTERS ON THE WINDOWS, AND THE BACK OF CULZEAN CASTLE FOR ITS FAIRYTALE POSITION ON THE EDGE OF A CLIFF - THESE WERE COMPED TOGETHER IN VFX AND PLACED AMONGST THE CLIFFS FOR A WILD, RUGGED CARRIAGE APPROACH.

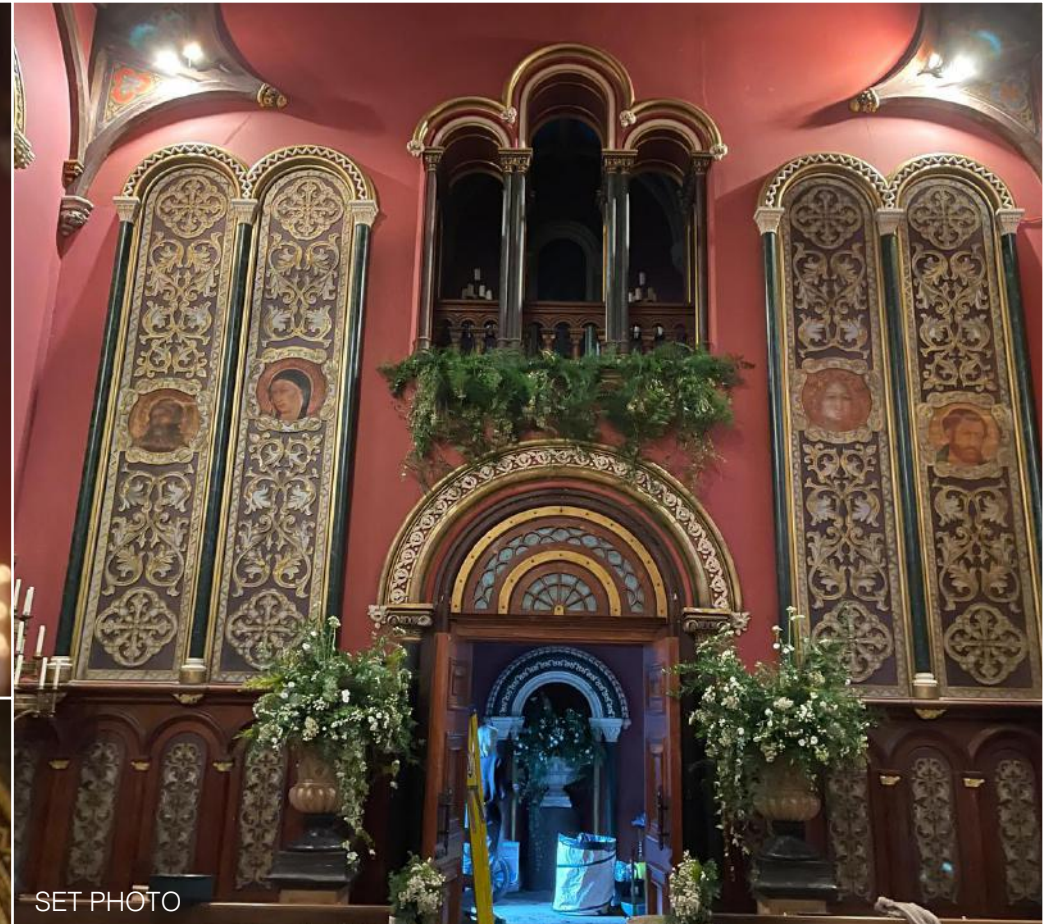




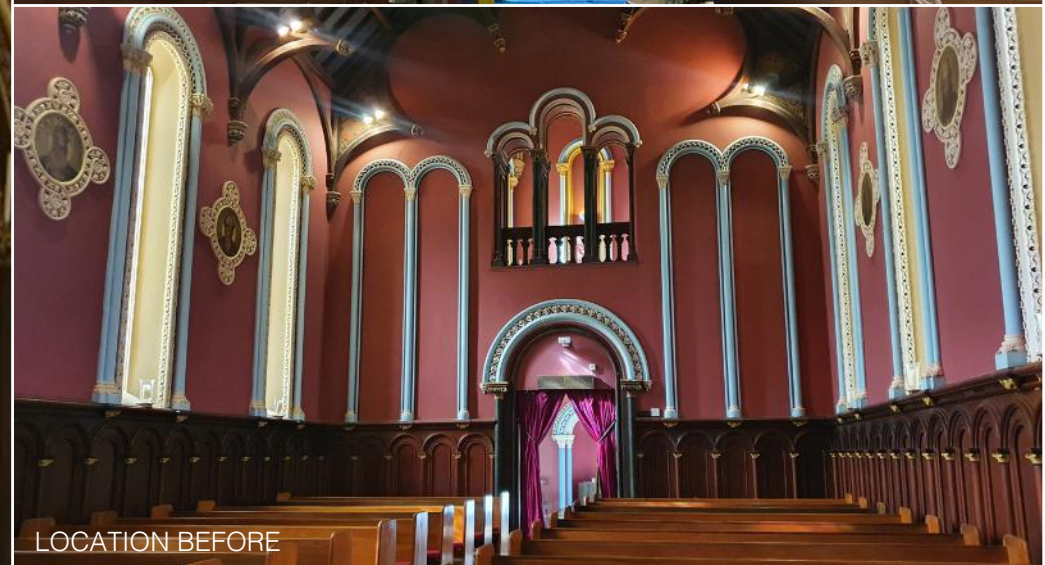
STILL



STILL



SET PHOTO



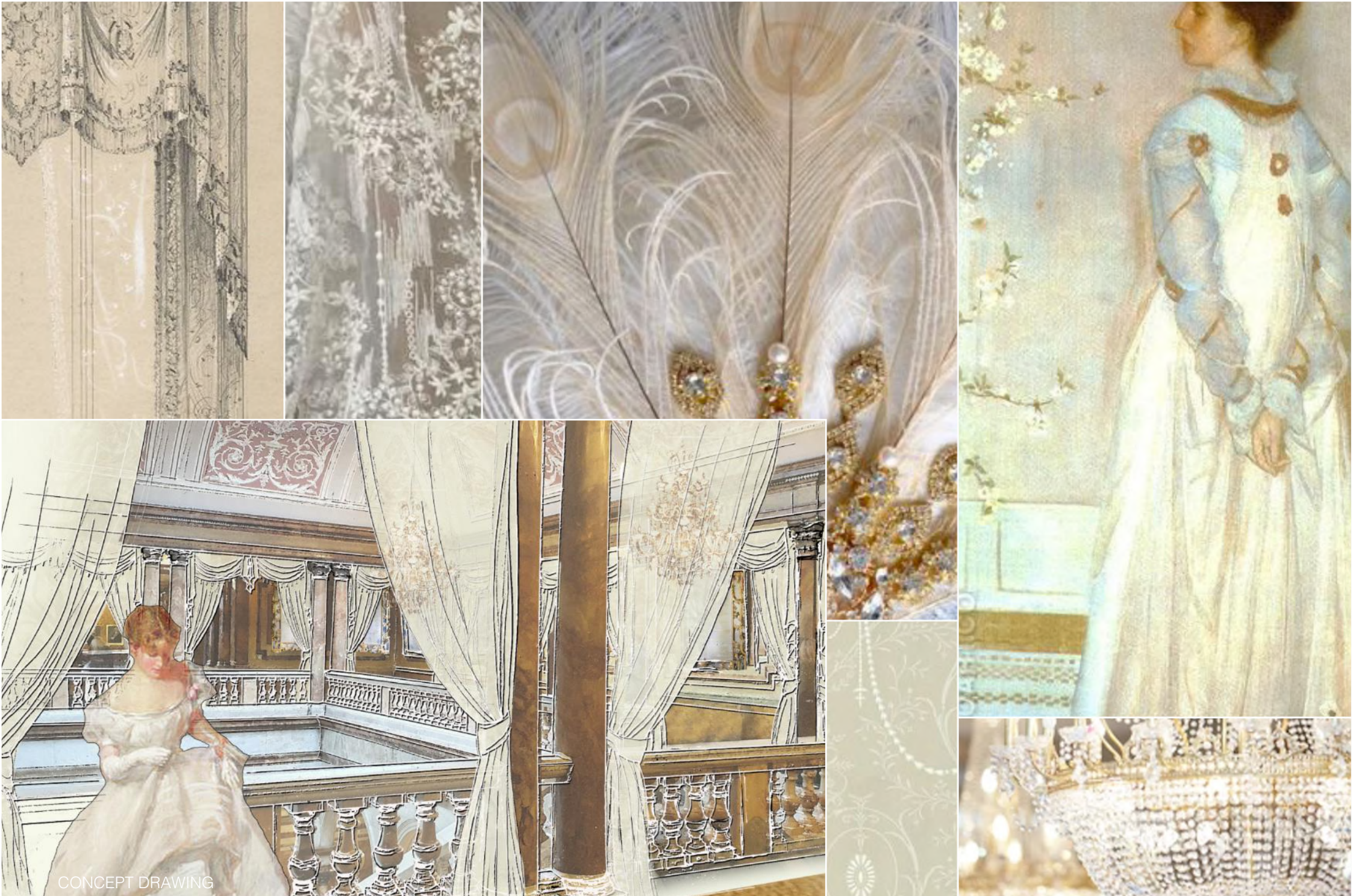
LOCATION BEFORE





# DEBUTANTE BALL





CONCEPT DRAWING

THE BUCCANEERS | DEBUTANTE BALL DESIGN

PRODUCTION DESIGNER | AMY MAGUIRE





STILL



STILL



SET PHOTO



STILL



STILL