

THE
GILDED AGE
Season 2

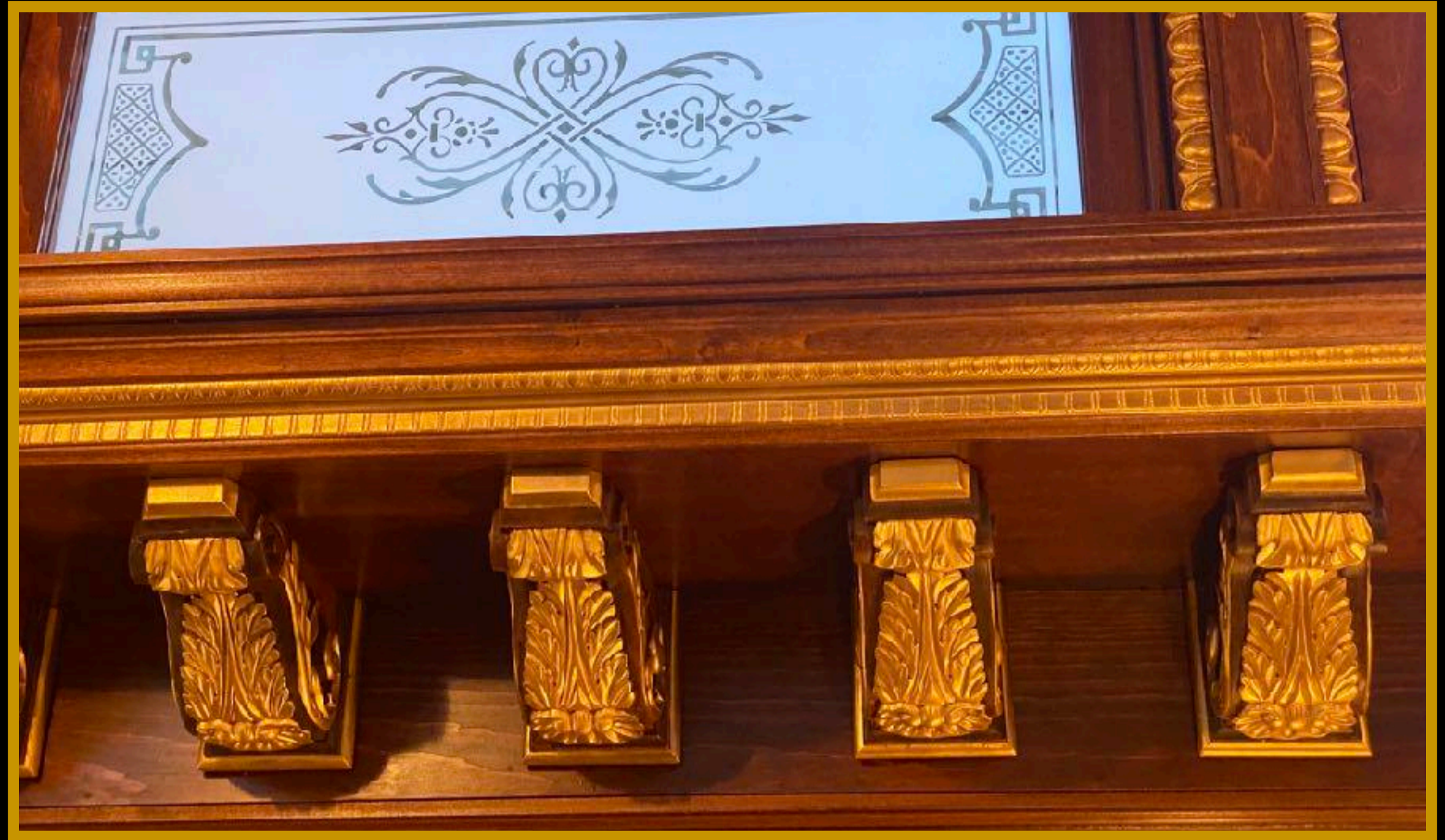
Larry Brown
SUPERVISING ART DIRECTOR

Bob Shaw
PRODUCTION DESIGNER

Lisa Scoppa
SET DECORATOR



GEORGE RUSSELL'S PRIVATE RAILROAD CAR





MAPLE HOUSE, THE NEW RUSSELL "COTTAGE" IN NEWPORT



THE GRAND ENTRANCE TO MAPLE HOUSE





THE DINING ROOM OF MAPLE HOUSE



**CAN YOU SPOT THE COLUMNS THAT OUR BRILLIANT SCENIC ARTISTS
MATCHED TO THE LOCATION, NEVER HAVING SEEN IT IN PERSON?**



GEORGE RUSSELL'S MAPLE HOUSE BEDROOM



GLADYS RUSSELL'S MAPLE HOUSE BEDROOM



THE MAPLE HOUSE KITCHEN



THE MAPLE HOUSE KITCHEN



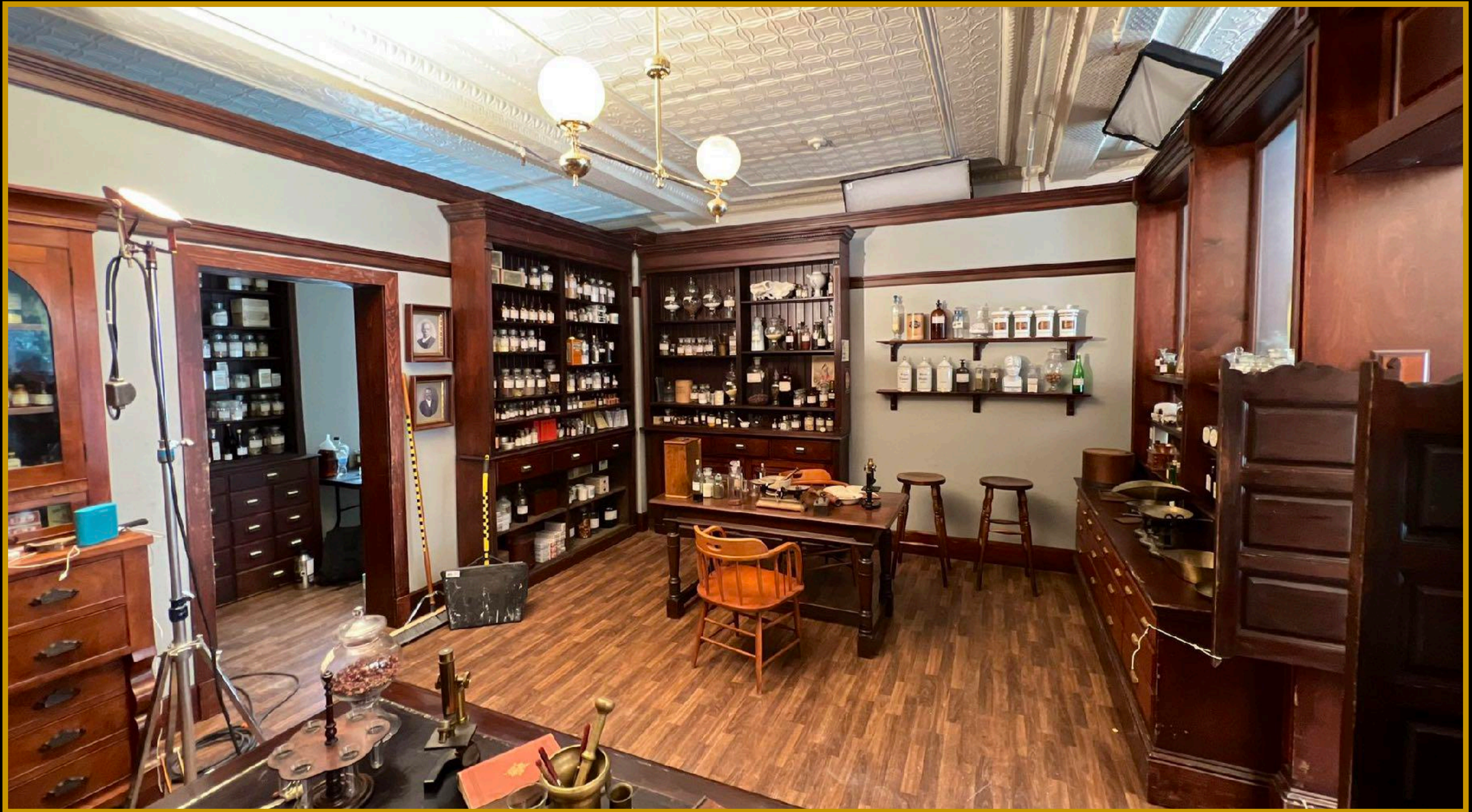
ARTHUR SCOTT'S PHARMACY IN BROOKLYN



ARTHUR SCOTT'S NEIGHBORHOOD PHARMACY IN BROOKLYN



ARTHUR SCOTT'S PHARMACY IN BROOKLYN



ARTHUR SCOTT'S PHARMACY IN BROOKLYN





TUSKEGEE INSTITUTE, ALABAMA



DOMESTIC ECONOMY CLASS TUSKEGEE INSTITUTE



BOOKER T WASHINGTON'S HOUSE



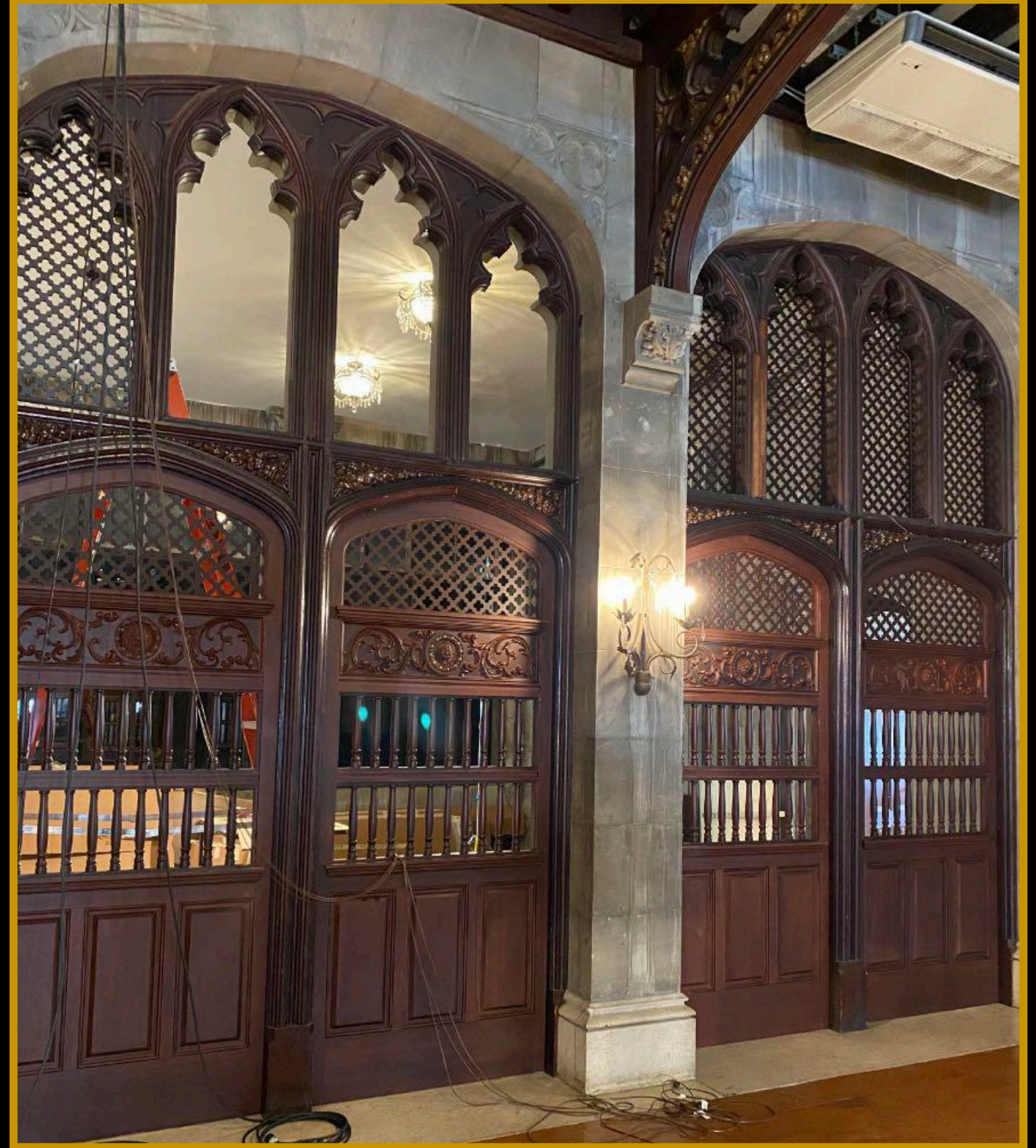
UNION CLUB DINING ROOM



UNION CLUB RECEPTION



**MISSING ARCHITECTURAL
ELEMENTS AT LOCATION**



**WOODEN SCREEN PLUGS
THAT ALLOWED FOR LIGHTING**



**THE LOCATION FOR LUKE'S OFFICE LACKED PERIOD DETAIL
ADDING ONE STAINED GLASS WINDOW SASH WAS ENOUGH TO FIX THE PROBLEM**



**MRS WINTERTON'S DRAWING ROOM
WE HAD A NEAR INSATIABLE NEED FOR VICTORIAN PARLOR SETS**



SUSAN BLAINE, MRS ASTOR, SARAH GARNET AND ST MARY'S SCHOOL PARLORS



DASHIEL'S PARLOR, LUKE'S PARLOR, ADA'S ROOM & AURORA'S PARLOR



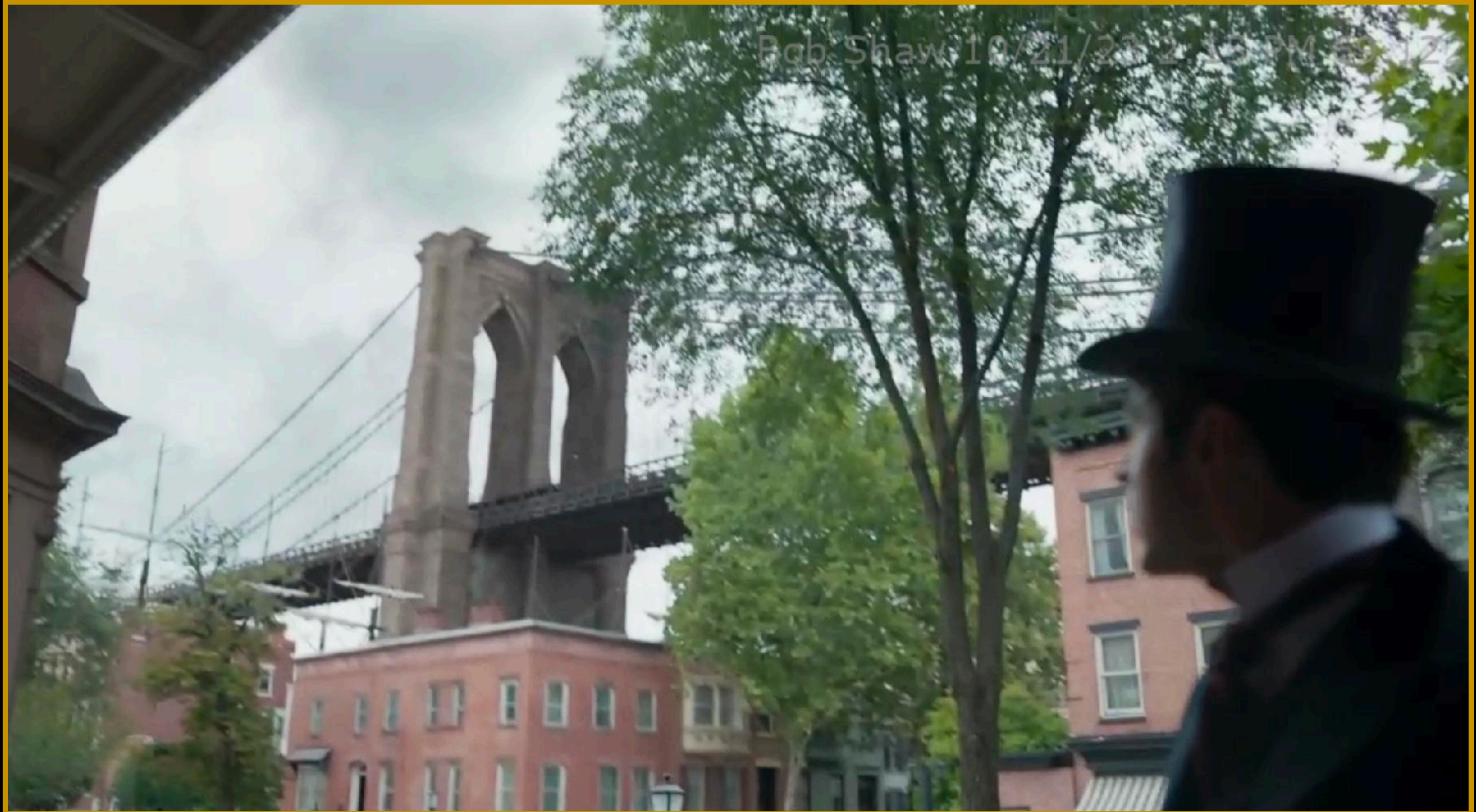
STEEL WORKER'S FACTORY HOUSING



A LARGE WALL AND FACTORY GATE WERE ADDED TO AN OLD TEXTILE MILL TO SERVE THE UNION LOCK-OUT STORY LINE



Bob Shaw 10/21/2022 1:51 PM 69/121



ROEBLING'S HOUSE & BROOKLYN BRIDGE WORKSHOP



ROEBLING HOUSE PARLOR



WORKSHOP & BRIDGE MODEL



ROEBLINGS HOME WORKSHOP



BOTANICAL GARDENS RECEPTION



BOTANICAL GARDENS RECEPTION



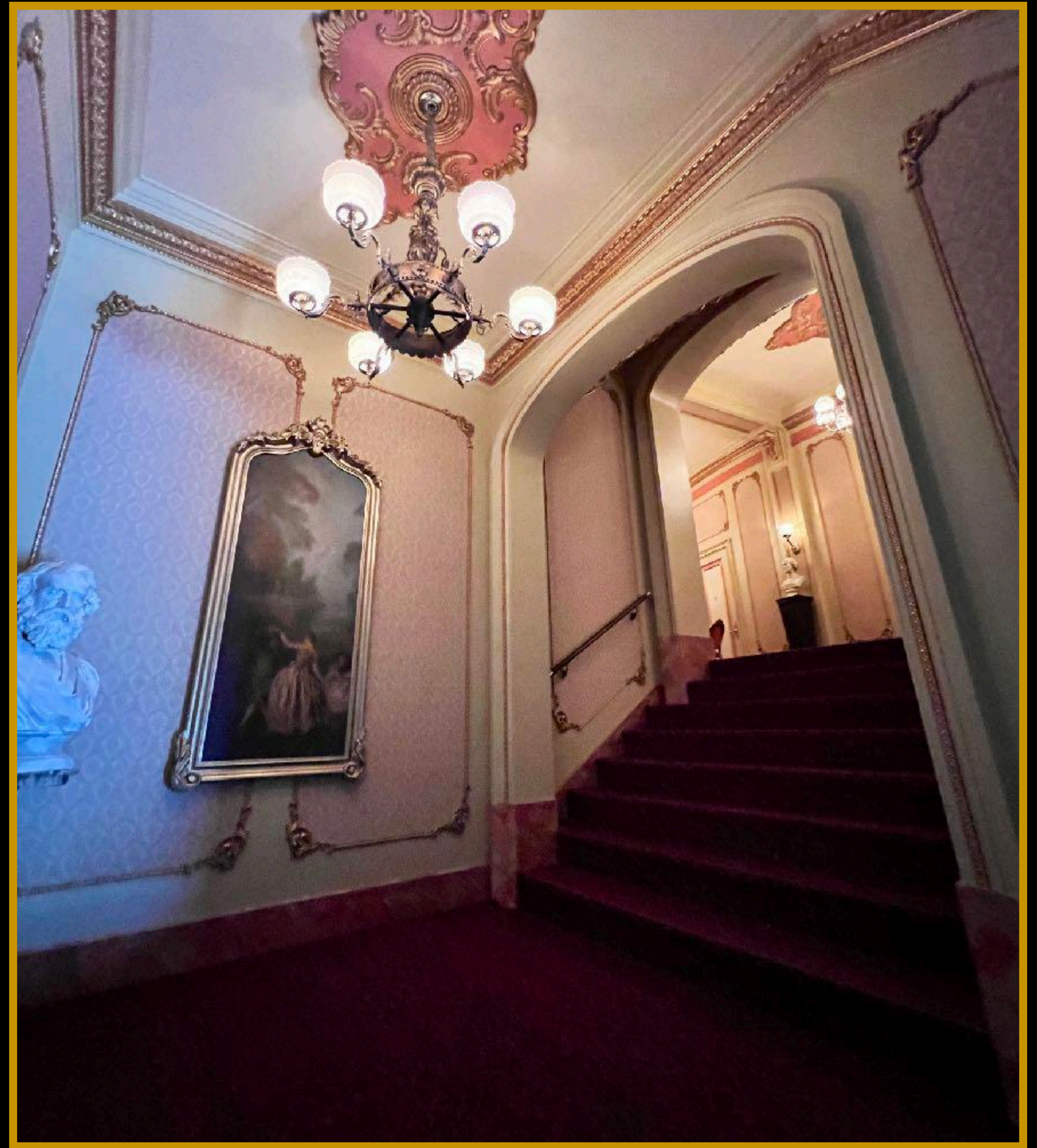
THE NEW METROPOLITAN OPERA HOUSE



**THE PLOT INVOLVED THE COMPETITION FOR BOXES AT THE OPERA
OUR PHILADELPHIA ACADEMY OF MUSIC LOCATION HAD NO BOXES**



WE BUILT 5 BOXES ON STAGE MATCHING THE BALCONY CURVE AND COLUMN SPACING OF THE ACADEMY OF MUSIC IN PHILADELPHIA



A CURVED HALLWAY AND STAIRCASE WERE PART OF THE SET



**THE HALLWAY TIED INTO A PRACTICAL LOCATION USED FOR
ADDITIONAL SCENES IN THE OPERA HOUSE**



**VFX MARRIED OUR BOXES TO THE FACES OF THE EXISTING
BALCONIES**



THE GILDED AGE

Larry Brown
**SUPERVISING ART
DIRECTOR**

Bob Shaw
PRODUCTION DESIGNER

Lisa Scoppa
SET DECORATOR

ART DIRECTOR
C. J. Simpson

ASSITANT ART DIRECTORS
Scott Davis
Libby Stadstad

ILLUSTRATOR
L. Javier Amejeras

GRAPHIC ARTISTS
Loren Kane
Julie Sasaki
Alex Miklos

Angelica Borrero-Fortier

SCENIC ARTISTS
Patricia Sprott
Jayson Marzano
Caitlin Conlow