

## **WITHOUT YOU WITHOUT THEM - lullaby**

A split screen triptych of Lucy, Phoebe, Julien... through their bedroom windows. Slow steady zoom. Bedtime rituals.

We finally move beyond the borders of the windows finding ourselves within their respective spaces. Simultaneously settle on each of their faces as they take their last few breaths and fall asleep at the exact... same... moment.

**CAMERA - Camcorder. Zoom. THREE SHOTS.**

We wake up in three different dreams:

---

boygenius

twenty bucks / true blue / emily i'm sorry

dir. kristen stewart

pd: jen dunlap

# Twenty Bucks



# references - bedroom



# Twenty Bucks

# Location Photos



Twenty Bucks

bedroom



## INT. BEDROOM

Julien wakes up in a red toy car bed for kids. One of those times you wake up like you're falling. She quickly leaves the room to find that she is in fact 11 years old. She looks and acts like an adult but she is treated as a child in what is her childhood home.

1. Close up, handheld, 16mm.
2. A wide. 16mm... She rockets out of that frame.

## INT. LIVING ROOM AND KITCHEN

3. She arrives in the living room--static medium turns into us following her into the kitchen and revealing the mom.

She shoves Julien out of this frame. Cut.



# Twenty Bucks

# references - living room





coffee table

~g? pop of blue?

# Twenty Bucks

# references - kitchen





4. Julien POV out window. Picket fence. Mom.

5. Julien slams into a chair in a close up. Spoon put in her mouth. Pull out, hand held, reveal whole kitchen and table. Mom walking in between Julien and us obscuring frame.

Julien runs out of this through living room, we follow, open back door turning into her POV through screen of Phoebe crouched in the backyard.

Screen rips open we charge out to get a better look... is that who we think it is? Yes Kid Phoebe turns toward us. She is crouching over small pile of rocks and sticks trying to light fire with a flint.

6. Reverse on Julien realizing this is Phoebe. Mouths the words "IN ANOTHER LIFE WE WERE ARSONISTS." 0:58 seconds.

This turns into another follow shot Julien dirty, focus on Phoebe leading us to the front of the house find the Chevy.

# Twenty Bucks

# references - outside



# Twenty Bucks

# references - outside



7. Reverse on Julien, "HOW LONG'S THE CHEVY BEEN ON CINDER BLOCKS?" 1:08

8. Cut back to prior shot. Lucy rolls out from under the chevy. The girls discuss the state of the car.

9. **Jump to the other side of the car for more discussion seeing** the three girls. They turn to the house...

10. Mom out the window...  
"DON'T RUN ON WISHES BUT HAVE FUN!"

11. **ACTIVITIES.** We get to play here. We choose when to use 16 or digital and we explore the space with our whole cast. We have a list of props and actions that coincide with different areas.... photos and list attached.

The car starts. We watch the engine turn. We see Lucy celebrate from the driver's seat. The mom continues to sort of give them shit from the window.

# Twenty Bucks

# references - car / garage



# Twenty Bucks

# references - car / garage



## Twenty Bucks

## Shot List

11. The special on Phoebe wandering off, pouring gasoline as she goes and zeroing in on the mom talking shit becomes locked in a profile with an ambiguous background --so more than 20 feet from any turf.

She mouths 'give me 20 dollars' over and over. She screams along with the song at 2:44. And a flame explodes out of her mouth. We accomplish this by measuring the height of her mouth, shooting her action. Pulling the kid. And bringing the fire in. Flame artist will combine elements.

12. Last shot from within the el camino as it pulls away... we see Julien grab Phoebe and jump into the back.. They are thrilled.... laughing... they did it. A little blurry flame in the lower right hand corner of frame becomes apparent as the mom runs out of the house with a broom or to grab a hose and just as we find our final image the fire catches.... but not as you would expect. At this point the film burns... reference attached.



# Twenty Bucks

arsonists

NOTE : No giant fire on set but we love these colors, the energy. Will burn last frame of 16mm film when they are driving away

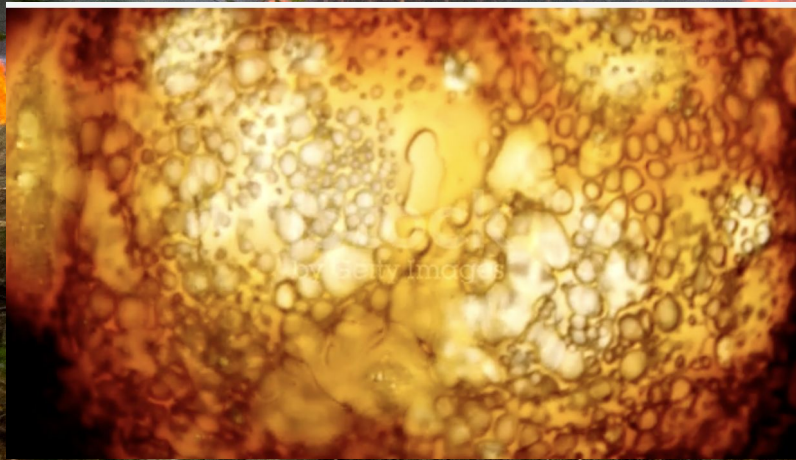


<https://www.dropbox.com/s/lsw02x0n6h35bjl/Firebreathing.mov?dl=0>



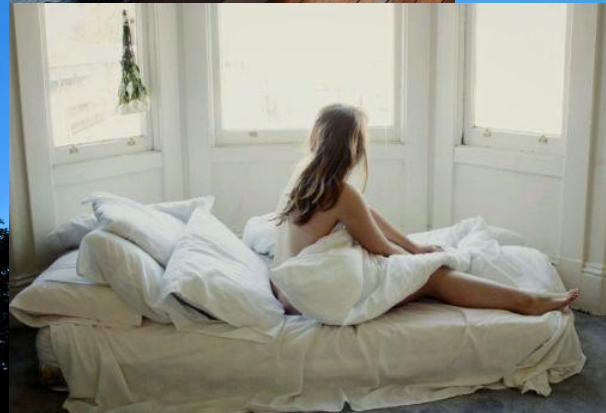
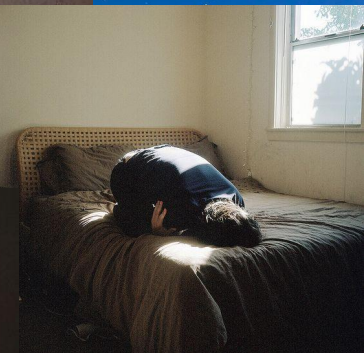
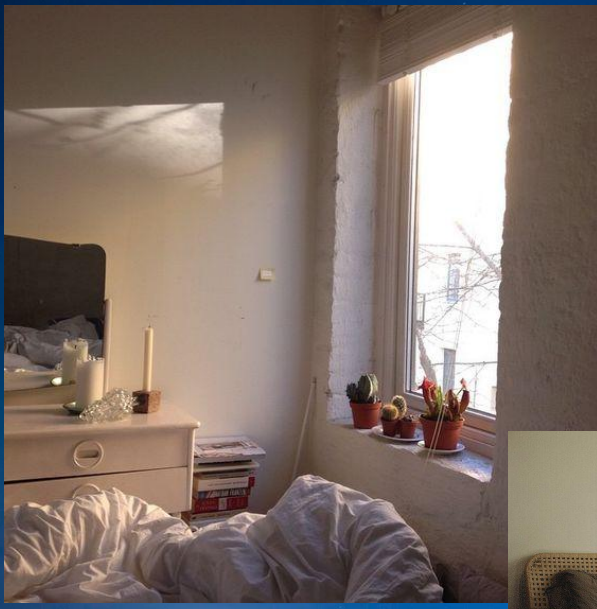
# Twenty Bucks

# film cell burn examples



# True Blue

# references - bedroom / waking up



Lucy wakes up right where she fell asleep.

## INT. LUCY BEDROOM

1. Top shot, roving portrait. Desaturated. She is dreaming. Intercut a few frames of lush vivid blue dreams...inserts we plan to shoot and accumulate over the course of the day or through respective archives. Or even photographs. Me and sean are on this as fuck. Opens her eyes.
2. POV out the window. Grey. Blue tarp dances into the tree and gets stuck.
3. reverse on lucy lit stunning.... Pick a blue rock off the window sill. Put in her mouth. She's out.

I think this is around 45 seconds long.



# True Blue

# Location Photos



True Blue

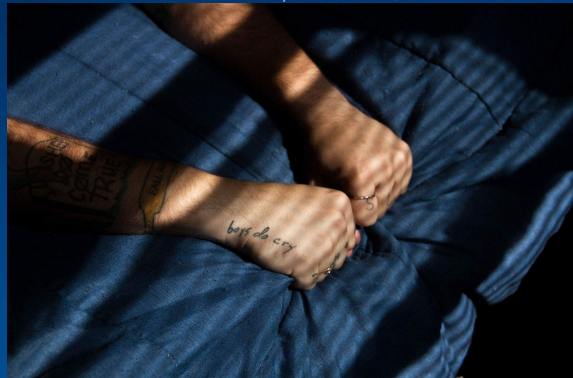


psyched on blue



# True Blue

reference / insp



## INT. HALLWAY

4. WIDE she walks down hall, pulling on a pair of jeans, is stopped in her tracks by a blue light on her face. More impetus.

5. Tight close up of the moment she is struck by.

4. rock falls from her mouth.

6. Macro shot of blue rock on the floor. Maybe it falls into different substances, blue milk, pigment, stain.

5. The close up starts moving. Toward us. All the way downstairs and outside with a lot of intention on her part. Light hits her face as the front door opens. 1:10 She squints in the direction of...

7. The blue tarp. Stuck high up in the tree. Entangled but dancing.

Back to her face focusing...

7. Slow zoom.

# True Blue

# interiors





# True Blue

# references



## INT. MAIN BLUE ROOM

**9.** 1:35 - Very wide. Nothing is blue yet. Facing the front door we catch Lucy cross the door frame... wrapped in the blue tarp. And doubles back to take a look at just how un-blue this room is. She unwraps herself revealing...

**10.** Macro - her upper lip sweats. And her cheek has been cut. Maybe her hair is wet from being outside or just sweaty. This is just to show how hard she worked to go get this fuckin thing.

**12.** She situates the tarp across the floor. First blue thing goes down.

And boom we are into playing with set dec and her painting the window landscape and dragging shit in from outside... and dragging shit from upstairs...non blue things getting thrown from a second floor window.

At 2:40 we intro Phoebe and Julien. "I remember who I am when I'm with you."  
They are just there next to her painting. This two shots.

2:55 Wide of the three of them sharing a frame for the first time... when we hear "true blue".

Until around 3:40 Phoebe and Julien integrate into the process. They are now applying the crazy blue loot that Lucy foraged. Building the nest. They work hard, they do a good job. The blue builds. They transform the space.

3:44 - Lucy takes a small break. Sits in a blue chair with her toe on a can of paint. She admires it. (macro of this too) tips it into new light... tips and tips... and spills it. Oh I guess we have to paint the whole floor blue. Everything.

They go about blue washing the house with paint.

Can we splatter a stove or any appliances or anything we have from twenty bucks kitchen in this. A bed. E-v-e-r-y-t-h-i-n-g.

It becomes desperate vital aggressive sick. We jump in with them. They spill into the foyer.... they spill out the door. They drag the blue tarp outside and Lucy staples and Phoebe nails and Julien duct tapes it to the floor. We step back and back, leave them alone a bit... and show the house as the final frame... reference for this attached.

True Blue

mock up - exterior



# Twenty Bucks - Hero Camino



Will cover this vinyl

## Twenty Bucks - motorcycle in the front yard



# EMILY I'M SORRY

1. Hero shot. Zoom out starting very close on her eyes. Reveal a little burning fire in the background on the word... "fire". Still very close. On "Emily, im sorry" at :43 the trucks are full height visible in a criss cross jump behind her. Reach a stop at 1:10. Our widest. Start zooming back in at 1:13 as the trucks finally fall to the ground.

2. 3. 1:19: "Screaming." Is the first cut away of Julien. Gonna shoot low and high frame rates on this to really slam in and out of our main shot. At 1:22 "Spiraling" we do the same thing with Lucy.

And back to our hero shot... zooming in... think background is at this point doing donuts.

At 1:43 "just get lost" we are back very tight on her face, where we started. This is where we cue her to start stepping back toward the action. And we zoom with her. Keeping her background totally obscured remaining as tight as we landed.

# SHOT LIST



## EMILY I'M SORRY

## SHOT LIST

When she stops at 1:57 we begin our zoom back out seeing for the first time she has transported and has a new background. They continue their donuts around her.

We find the back of our zoom at 2:50. As the cars also settle and park behind the heap of shit and Phoebe.

At 2:52 she stops singing. Her last line would be "but i know what I want"  
And she turns away from us.

This motivates the camera to dismount from the rig, grow legs and start walking toward her. She crouches ala Twenty Bucks... as we near her she turns towards us and without looking torches the heap. She and we step back..... fire on her face. The other boys walk around each side of the slowly growing bonfire\* and flank her. See yuh.

\*bonfire added in post supplemented w/ practical fire captured day 1





EMILY I'M SORRY

LOCATION



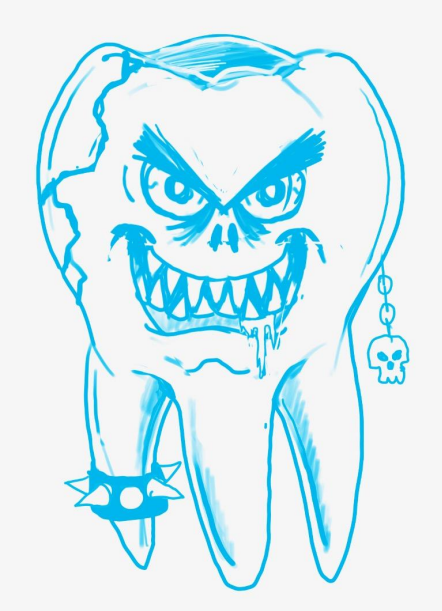


<https://m.youtube.com/watch?v=JytmP1LMTKA&feature=youtu.be>

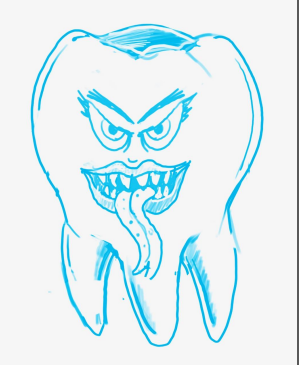


<https://m.youtube.com/watch?v=xHwQLLqIb6A&feature=youtu.be>

# MONSTER TRUCK -TOOTH DECAL SKETCHES



Smashing through/flipping out from truck?



MONSTER TRUCK -TOOTH DECAL SKETCHES



## DEBRIS PILE - CARS

Will paint this car the same blue as our camino - and add angles to the back portion to make it look as similar as possible.



These two cars will live underneath, and the blue one will be placed on top of them.



## DEBRIS PILE - EXTRAS



- + Blue tarps, fabrics
- + Red toy car bed
- + Fort pieces

