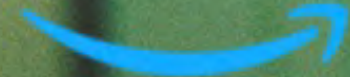


JANINE NABERS — and — DONALD GLOVER
present


STAN CORRECT

SWARM

starring **DOMINIQUE FISHBACK**

prime


PRODUCTION DESIGN
— SARA K WHITE —



**What does the world look like when only
one thing makes sense?
When only one person matters to you?
When only one person understands you?
When only one person loves you?
How does your world collapse into that
relationship?**

WHO'S YOUR FAVORITE ARTIST?

DRE & RIS APARTMENT





Defining Dre's limited interests and stilted, childlike interaction with the world started with her bedroom.

DRE & RIS APARTMENT



DRE & RIS APARTMENT



Marissa is aware of trends and driven, with a strong sense of self and emotional connection to others. She's made her space into something special, painting and wallpapering, making the closet into her own makeup studio.

DRE & RIS APARTMENT





DRE & RIS APARTMENT

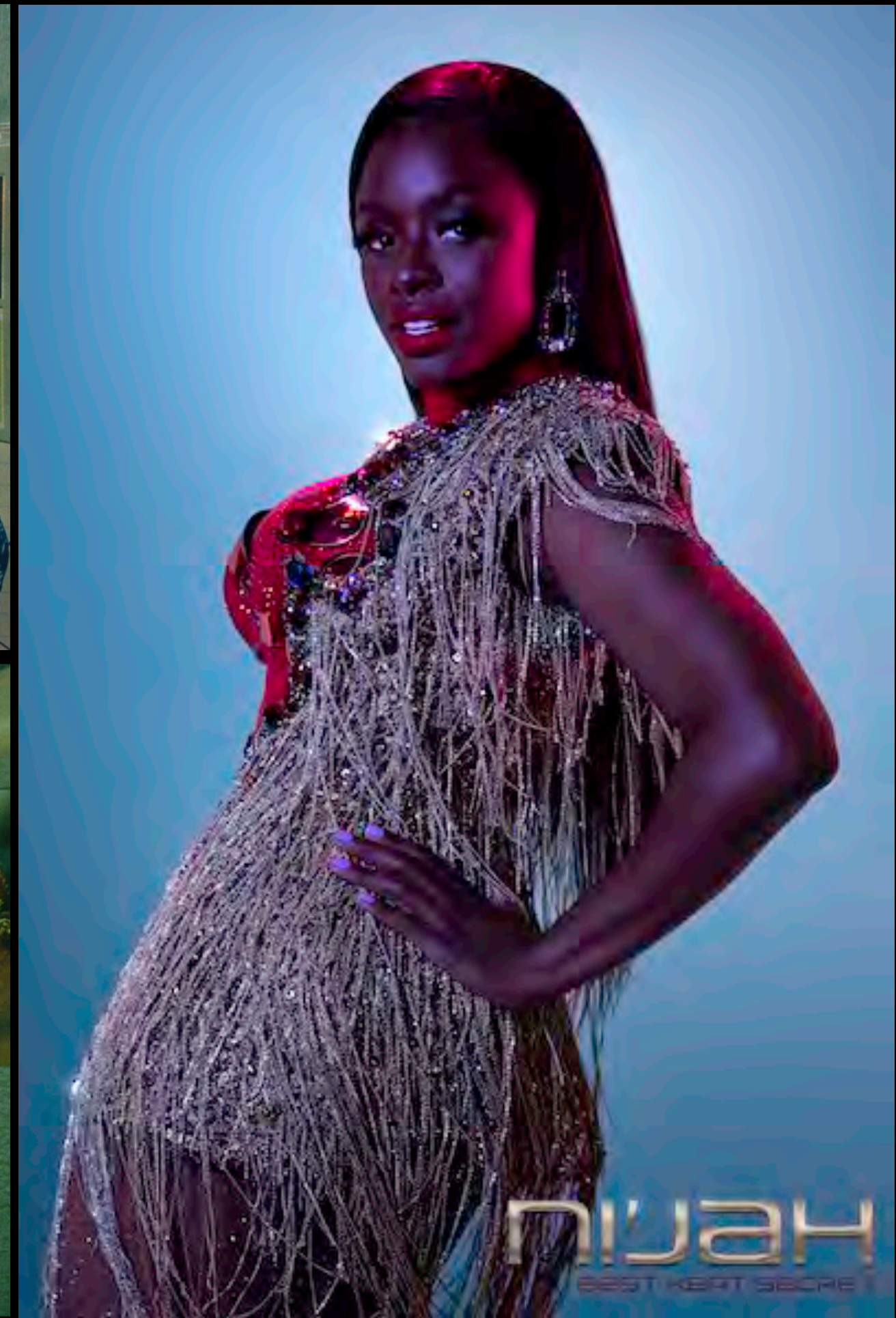
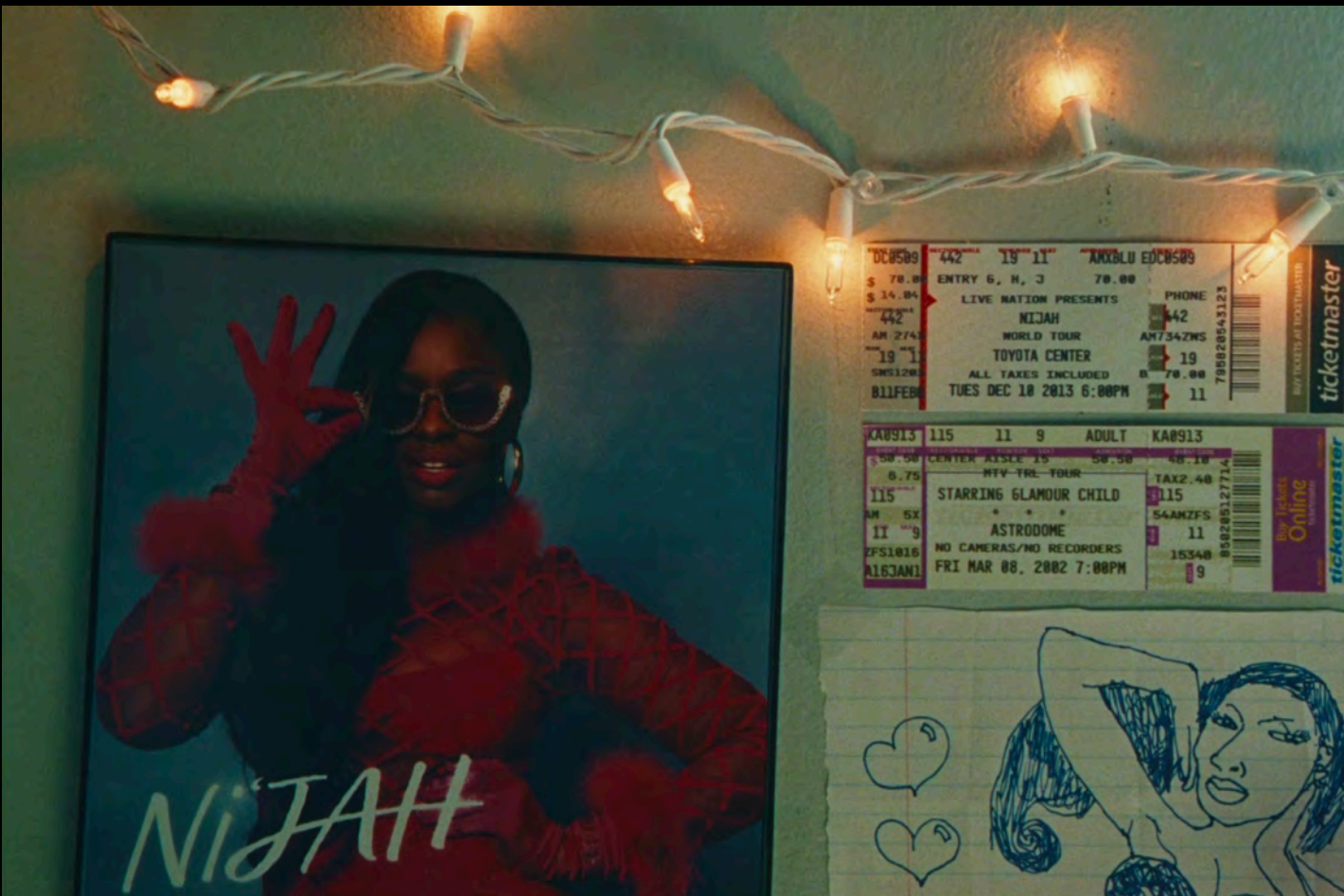


The Living Room was conceived as a place that was “aiming to be intentional.” Ris was working on making it into something special, trying to cover up the stains on the wall with a trendy paint treatment. But there were other things to do, and Dre could never figure out how to pick up the slack.



DRE & RIS APARTMENT

NI'JAH GRAPHIC DEVELOPMENT







Caché

Ni'Jah

THE RUNNING SCARED II TOUR

JUNE 25
JUNE 28
JULY 01
JULY 05
JULY 07
JULY 09
JULY 11
JULY 12
JULY 15
JULY 18
JULY 20
JULY 22
JULY 24
JULY 27
JULY 30
AUG 02
AUG 04

SUN LIFE STADIUM
GREAT AMERICAN BULL PARK
GILLETTE STADIUM
CITIZENS BANK PARK
HAT BARK STADIUM
ROGERS CENTRE
WETUPE STADIUM
WETUPE STADIUM
THE GEORGIA DOME
MINUTE MAID PARK
MERCEDES-BENZ SUPERDOME
AT&T STADIUM
SOLDER FIELD
INVESTORS GROUP FIELD
SAPCO FIELD
ROSE BOWL

MIAMI GARDENS, FLORIDA
CINCINNATI, OHIO
FOXBOROUGH, MASS
PHILADELPHIA, PENNS
BALTIMORE, MARYLAND
TORONTO, ONTARIO
EAST RUTHERFIELD, NEW JERSEY
EAST RUTHERFIELD, NEW JERSEY
ATLANTA, GEORGIA
HOUSTON, TEXAS
NEW ORLEANS, LOUISIANA
ARLINGTON, TEXAS
CHICAGO, ILLINOIS
WINNIPEG, MANITOBA
SEATTLE, WASHINGTON



NI'JAH



RUNNING SCARED II

WORLD TOUR 2018
US & EUROPE

+ CARDIFF	+ PARIS	+ NASHVILLE
+ GLASGOW	+ NICE	+ ATLANTA
+ MANCHESTER	+ CLEVELAND	+ ORLANDO
+ LONDON	+ WASHINGTON	+ MIAMI
+ AMSTERDAM	+ PHILADELPHIA	+ ARLINGTON
+ COPENHAGEN	+ EAST RUTHERFORD	+ NEW ORLEANS
+ STOCKHOLM	+ BOSTON	+ HOUSTON
+ BERLIN	+ MINNEAPOLIS	+ PHOENIX
+ WARSAW	+ CHICAGO	+ LOS ANGELES
+ COLOGNE	+ DETROIT	+ SAN DIEGO
+ MILAN	+ COLUMBUS	+ SANTA CLARA
+ ROME	+ BUFFALO	+ VANCOUVER
+ BARCELONA	+ COLUMBIA	+ SEATTLE

RSII



WORLD TOUR 2018

+ CARDIFF	+ PARIS	+ NASHVILLE
+ GLASGOW	+ NICE	+ ATLANTA
+ MANCHESTER	+ CLEVELAND	+ ORLANDO
+ LONDON	+ WASHINGTON	+ MIAMI
+ AMSTERDAM	+ PHILADELPHIA	+ ARLINGTON
+ COPENHAGEN	+ EAST RUTHERFORD	+ NEW ORLEANS
+ STOCKHOLM	+ BOSTON	+ HOUSTON
+ BERLIN	+ MINNEAPOLIS	+ PHOENIX
+ WARSAW	+ CHICAGO	+ LOS ANGELES
+ COLOGNE	+ DETROIT	+ SAN DIEGO
+ MILAN	+ COLUMBUS	+ SANTA CLARA
+ ROME	+ BUFFALO	+ VANCOUVER
+ BARCELONA	+ COLUMBIA	+ SEATTLE

CACHÉ

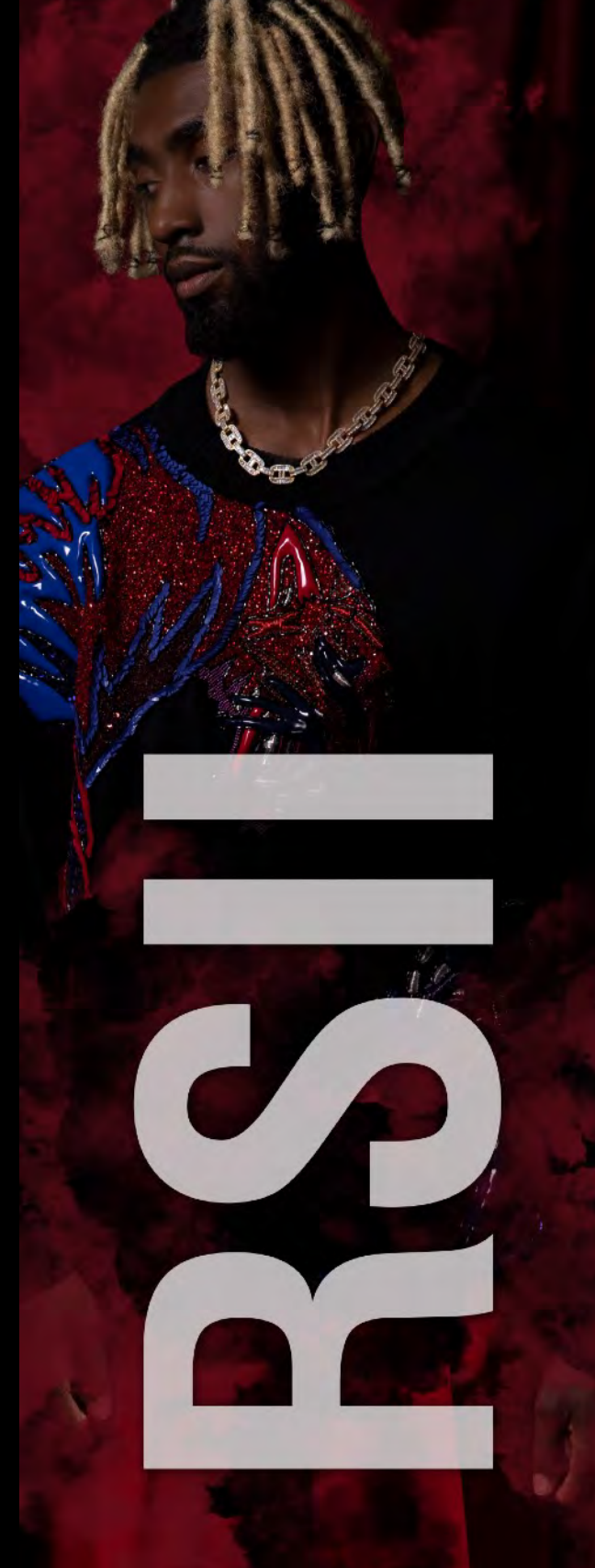
NI'JAH

NI'JAH



RSII

CACHE



RSII



MARCUS APARTMENT



MALL T-SHIRT STAND

KHALID HOUSE









THE LURE



THE LURE

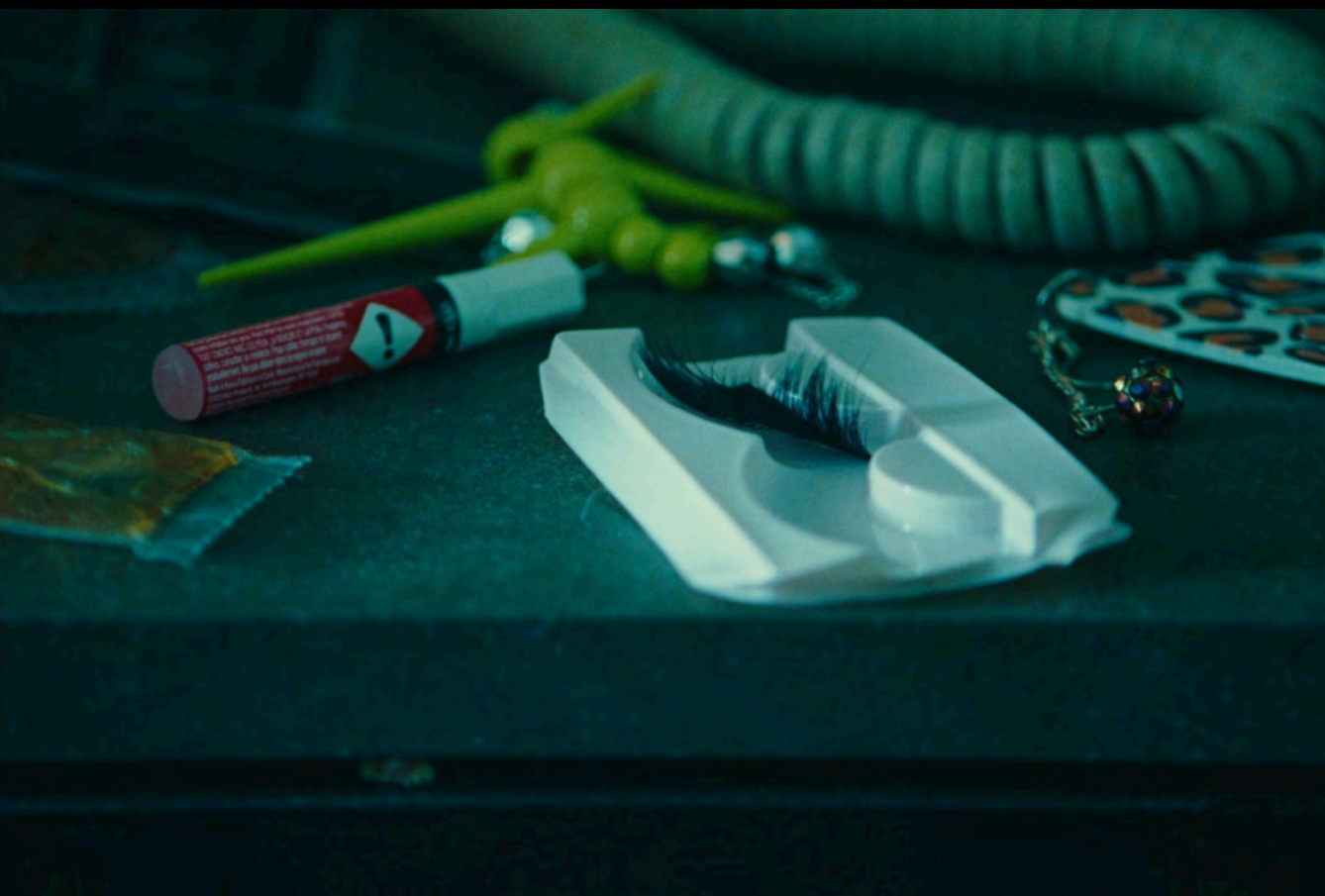


THE LURE



DRE MOTEL







DRE MOTEL

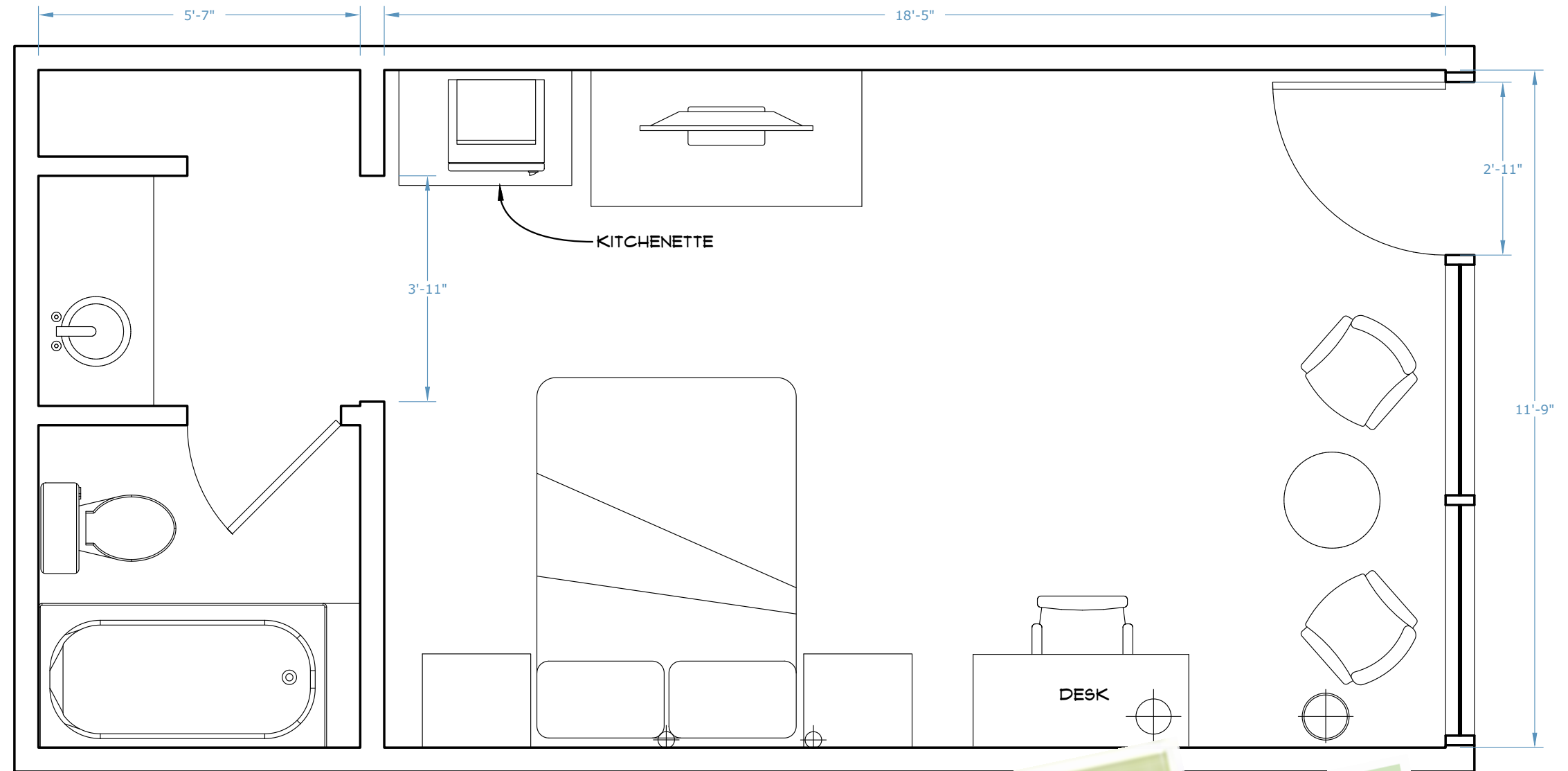


DRE MOTEL



DRE MOTEL

EXTENDED STAY MOTEL



0 1 2ft

YELLOW

EXTENDED STAY - DIRECTOR PLAN

LOCATION: 1865 CHESHIRE BRIDGE RD NE, ATL

03/29/22

DESIGNER: SARA K WHITE

ARTIST: JULIA JENKO

Bringing this green into the set gave the entire space feeling of discordance with the other decor elements.

DRE MOTEL

Garden Leek
PL203

LRV: 70
Hex: #D8DFB0
RGB: 216, 223, 176
CMYK: 3, 0, 21, 13

Verdence
121B

LRV: 75
Hex: #D3E7C2
RGB: 211, 231, 194
CMYK: 9, 0, 16, 9





Controlling for red allowed us to use it to great effect when the situation called for it - here Dre starts to turn on Hailey.

RED DINER



RED DINER







Using a mermaid motif let us build on Hailey's identity as someone who is "half."

SIR APARTMENT



SIR APARTMENT



Custom Mermaid Shower Curtain





BASEBALL PARTY



BASEBALL PARTY

Dre's rotating cast of cars gives us a hint of her body count.

DRE BENZ

TONK HOUSE







It was crucial to find a place that could give us a lot of camera portals for shooting a large group of people and a long hall for “stalking the prey.” Giving Tonk a house that felt handed down from his grandma or aunt, that had furnishings and decor that felt homey was important. That it should feel boy-ish and non-threatening.



Pairing that with a passion for katanas sheathed in red at once could be read as part of that immaturity, or as a hit of underlying violence. Tonk is both kind and cruel. And aren't we all?







Floral wallpaper from a bygone era, and a katana above the bed. How Tonk.

TONK HOUSE

DAYTHON HOUSE





A flashy young YouTube mogul, spewing hatred all up on the internet.

DAYTHON HOUSE

EVA HOUSE





Affluence & a mythical connection to nature meet in a newly built “French Country House” just outside the suburbs.

EVA HOUSE



Using the visual language of controlling spaces - like a 1940's mental hospital - helped enhance the cult vibes.

EVA HOUSE



Evoking Christian spirituality with stained glass helped support the importance of sin in the rituals of the cult.

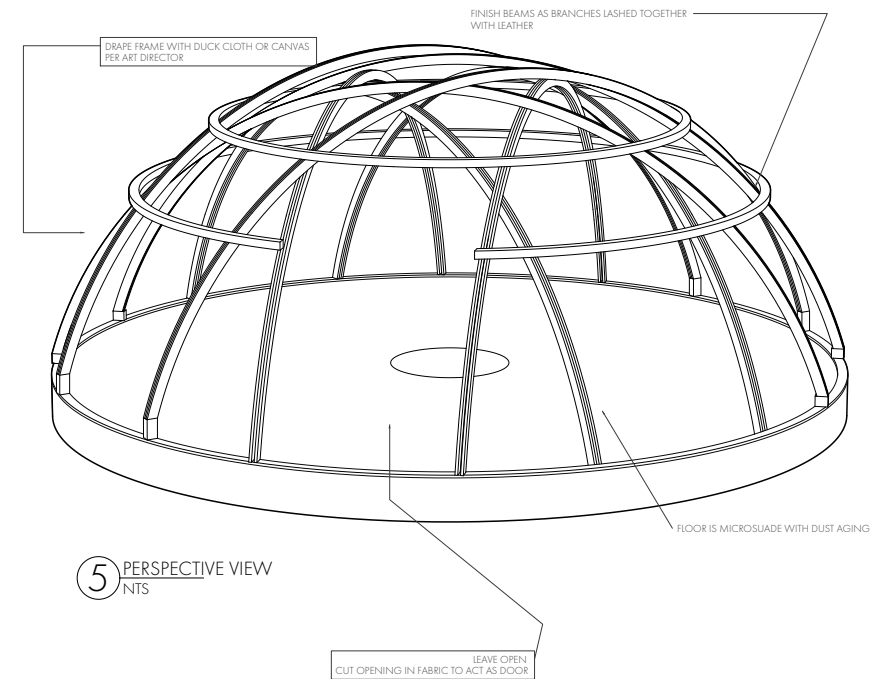
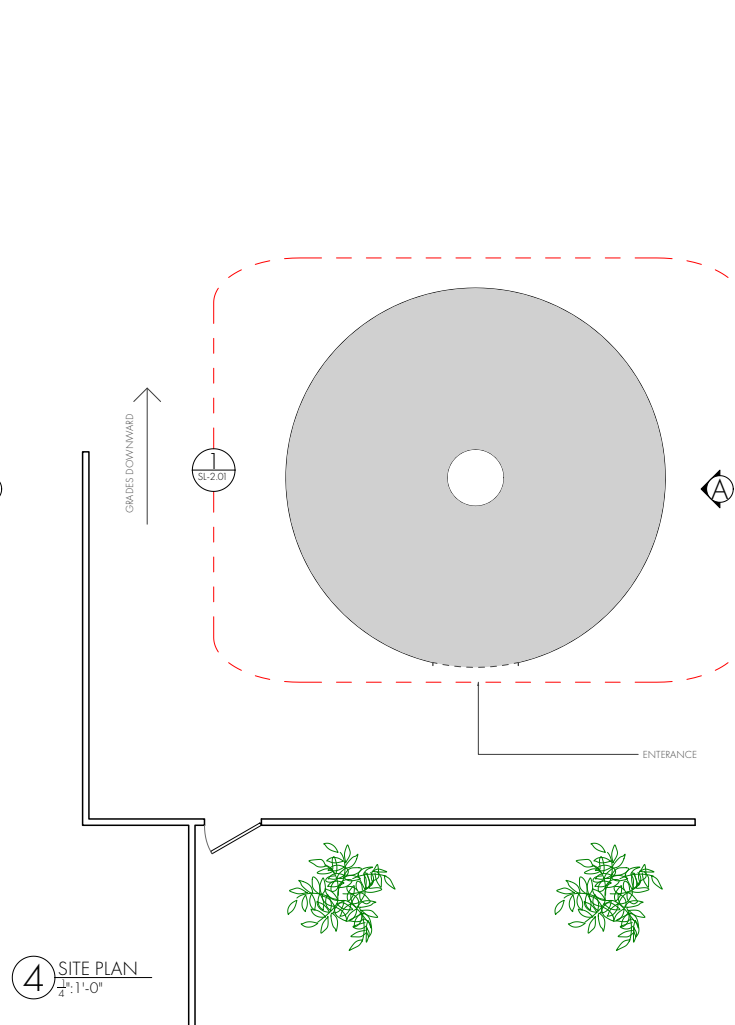
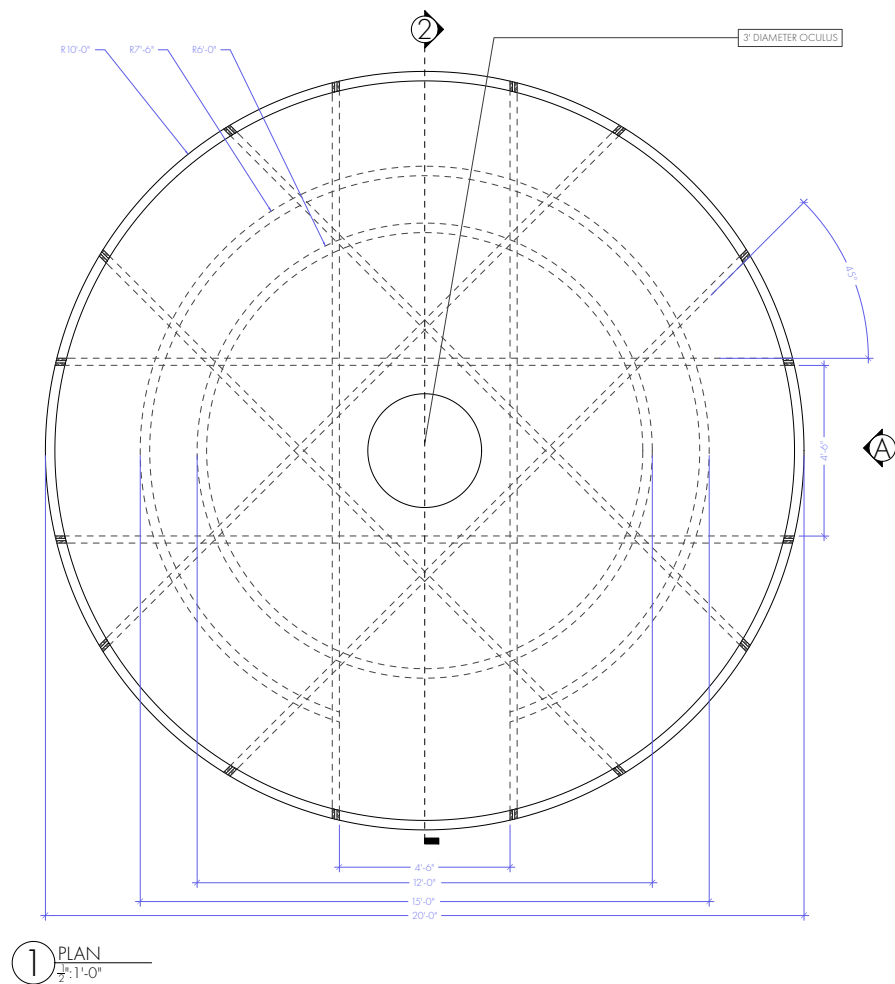
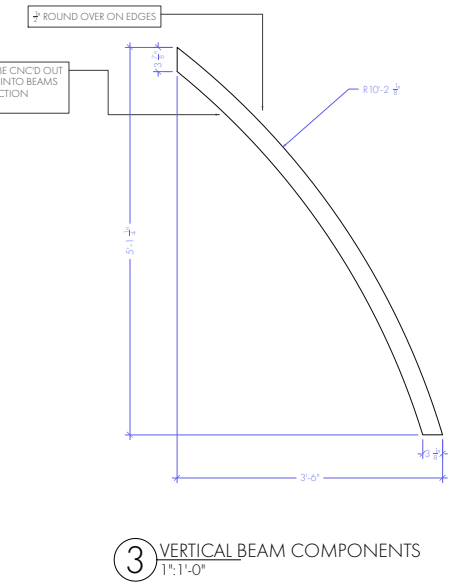
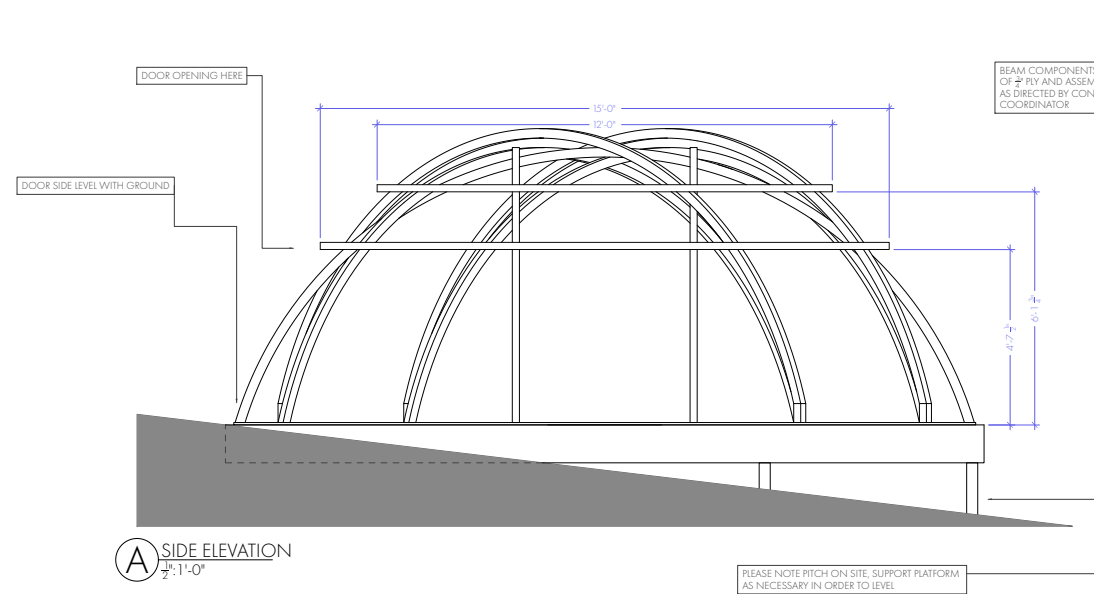
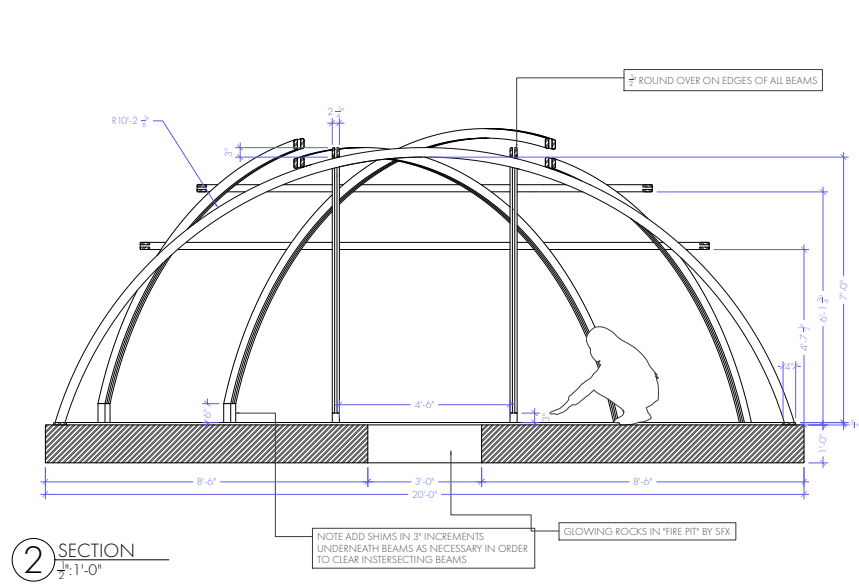


Co-opting ceremonial spaces from other traditional cultures helped place the cult & cult participant's world view.

EVA HOUSE - SWEAT LODGE

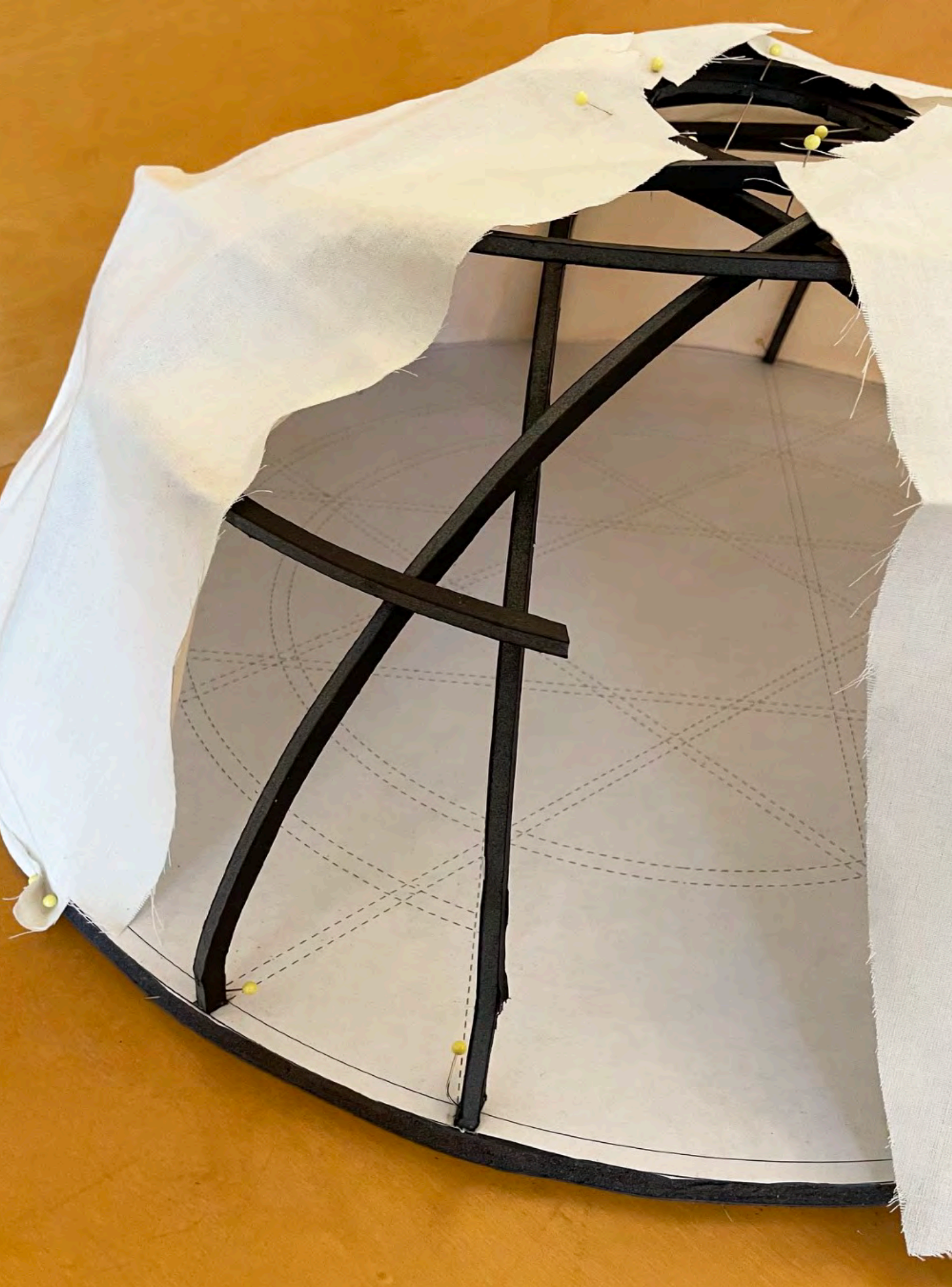


EVA HOUSE - SWEAT LODGE



PRELIMINARY
05.03.22

YELLOW	EPISODE 104	PRODUCTION DESIGNER SARA K. WHITE	SET #: 413
	DIRECTOR IBRA AKE	ART DIRECTOR JULIA JENKO	SHEET #: SL-2.01
SET NAME: RANCH HOUSE		SCALE: AS NOTED	
DRAWING NAME: SWEAT LODGE		DATE: 04.22.22	
DRAWN BY: WILLOW WATSON		LOCATION: HAWAII ISLANDS, KAUAI, KAPALEHA, KAUAI	
APPROVED:			



EVA HOUSE - SWEAT LODGE

JACKSON HOUSE







A man's home is his castle. Dre's foster parents believed they were good people and tried to present that to the world, to play by the rules of wealth. But their greed and indifference was revealed by using a stylized McMansion.

JACKSON HOUSE



Draping the house in red accents again sets the stage for our action.

JACKSON HOUSE



The arches and artifice of faux upper-middle class suburbia are plain to see.

JACKSON HOUSE





RASHIDA APT





Starting with the color palette and decor elements of Marissa's room, we imagined them more mature, more traditionally educated and connected to heritage, making Rashida a not-too-hazy mirror of Ris.

RASHIDA APT





A comfortable house, not showy but full of love and the artifacts of a life well and fully lived. A new experience for Dre.

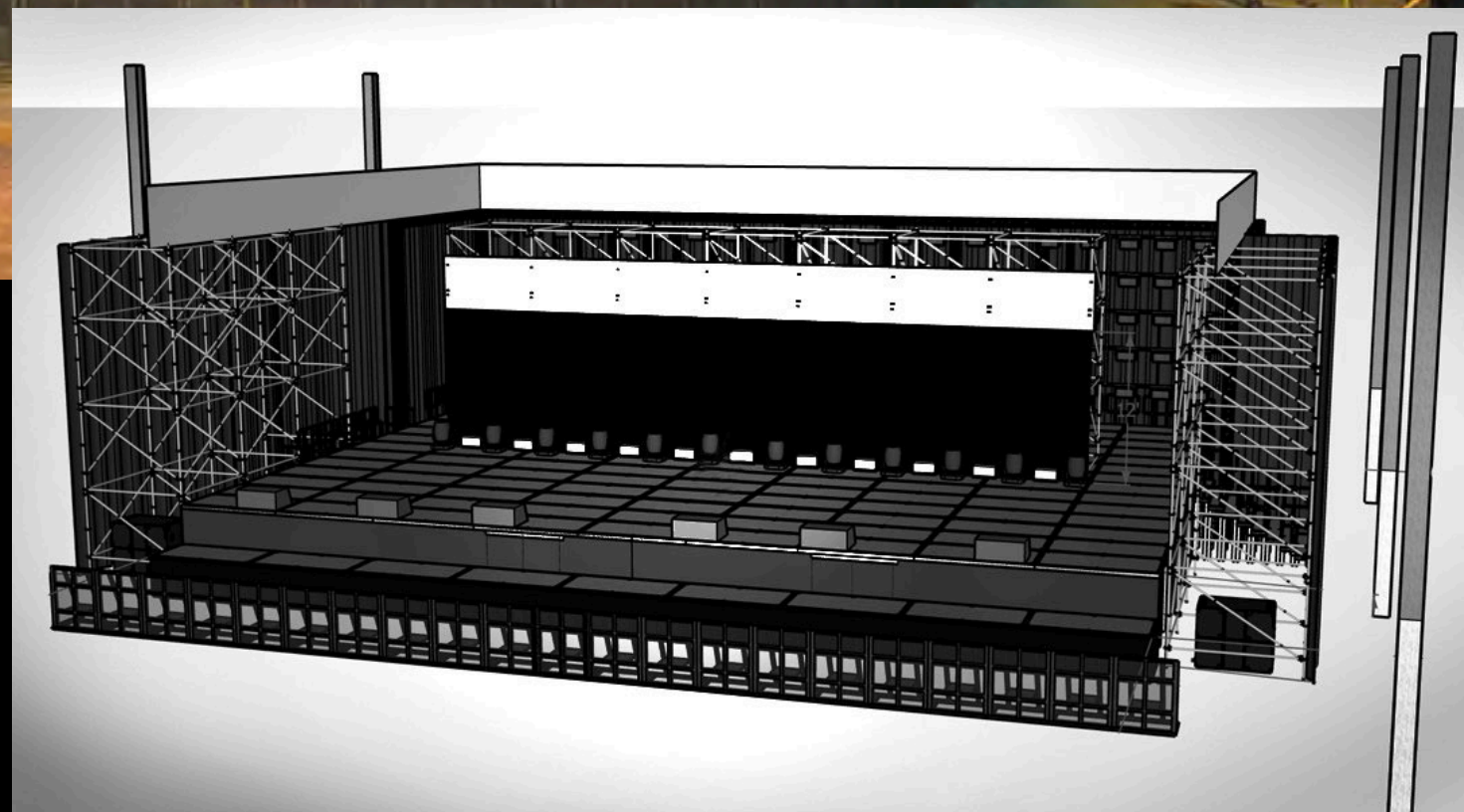
THOMPSON HOUSE



THOMPSON HOUSE

RUNNING SCARED II





RUNNING SCARED II



RUNNING SCARED II



RUNNING SCARED II

TEAM ART

PRODUCTION DESIGN — SARA K WHITE

ART DIRECTION — JULIA JENKO

SET DESIGNER — WILLOW WATSON

GRAPHIC DESIGN — HEATH HANCOCK

SET DECORATION — LAURA WALLGREN