



OUR HISTORY IS NOW
OUTLANDER

STARZ ENTERTAINMENT

SONY PICTURES TELEVISION | LEFT BANK PICTURES
STORY MINING AND SUPPLY CO. | TALL SHIP PRODUCTIONS

PRODUCTION DESIGNER: MIKE GUNN
SUPERVISING ART DIRECTOR: MOLEY CAMPBELL
SET DECORATOR: STUART BRYCE

OUTLANDER SEASON 7

Outlander Season 7 was an epic Journey of Love and War set amidst the American Revolution in 1777 and Scotland both in 1739 and 1980. 3 time periods, 4 countries, 41 locations, 5 Studio Stages and 152 sets were filmed over 13 weeks producing 8 episodes.

Jamie and Claire's journey would have them lose everything with the burning down of their home at the beginning the season and then lead them on a journey to help build a new Nation as the American Revolution took hold of their lives.

The challenge for the Art Department was to successfully portray the scale of the war and struggle for freedom as well as depict the intimacy of the love and bond that held the Frasers together.

We juxtaposed colour, scale and texture from one set to the next to tell the tale of the character involved and their journey. From the ghost white of our angel 'Denzell' to the carbon black of the 'Johnsons' and their threat. The vast scale of the military 'Redoubt' to the vulnerability and fragile size of the 'Freemans farm'. The soft silk chiffon of Claire's bedsheets to the harsh brutal splintered timbers of the Cheval de Frise.

This season was essentially a road movie that had our characters travel through sets and locations that appeared only once. The demand and high turnover of sets was immense and exciting that required attention to historical period detail whilst ensuring the aesthetic was portraying the development of our characters love, courage and journey through peril and desire.

Entirely shot in Scotland we depicted North America and its vast unspoilt landscape and built sets that told our characters story. Each of the 35 exterior locations required major construction effort, landscaping and Greens work and the considerable effort of the Set Decorating department. Collaborating with the Visual Effects department we created all the models and concepts ensuring the narrative of our aesthetic was consistent throughout the whole process.

On this season of **Outlander** we created and built 11 studio sets each of which averaging 1600 square feet. The main set 'Lallybroch' totaled 6000 square feet in size. Two of the sets were two tiered and all required full decorative plasterwork with scenic painted backdrops. The Art Department produced 562 issued drawings for the studio sets alone.

Designing and creating the world of **Outlander** was an immense challenge and a unique privilege that was only possible with the creative help of the Art Department, Set Decorating and Construction departments.

INT. 1980 LALLYBROCH CASTLE

CONCEPT ART



Int. Lallybroch Dining Rm

INT. 1980 LALLYBROCH CASTLE

CONCEPT ART



Int. Lallybroch Dining Rm



INT. 1980 LALLYBROCH CASTLE

CONCEPT ART



Int. Lallybroch Dining Rm



INT. 1980 LALLYBROCH CASTLE

CONCEPT ART



Int. Lallybroch Kitchen - 1980

INT. 1980 LALLYBROCH CASTLE

CONCEPT ART

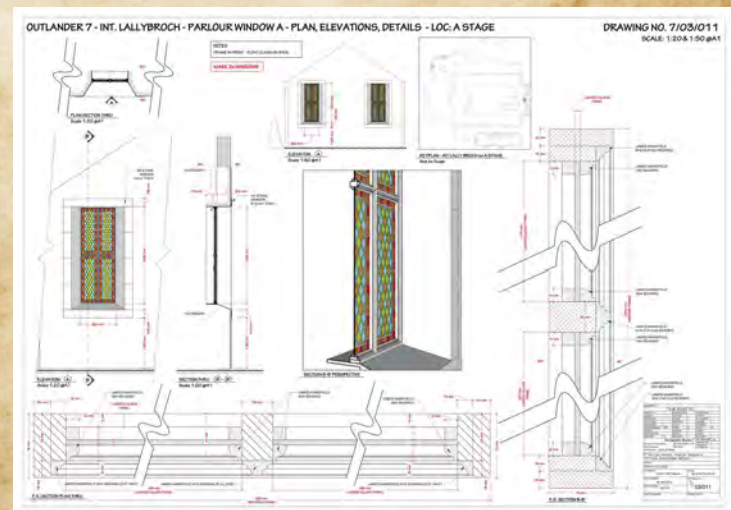
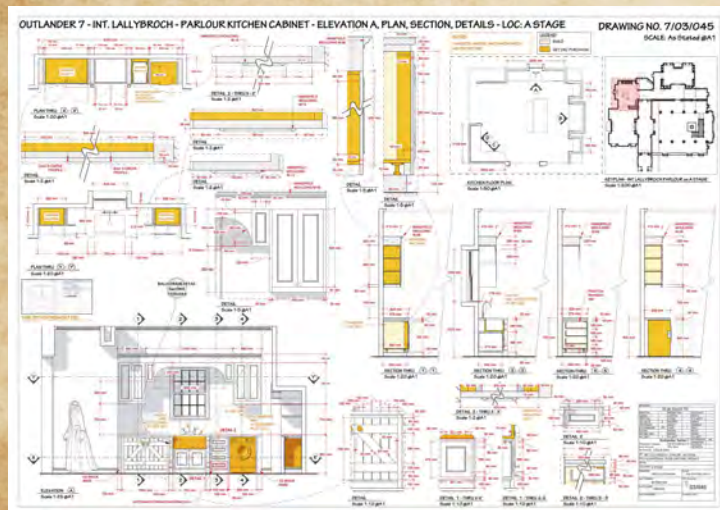
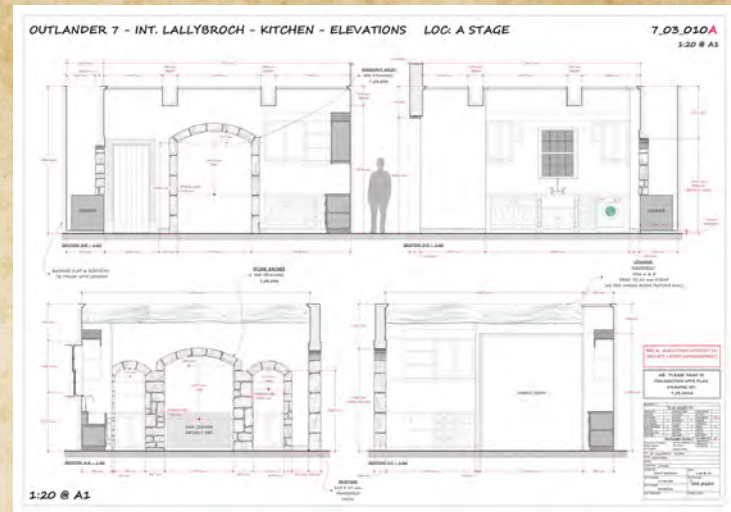
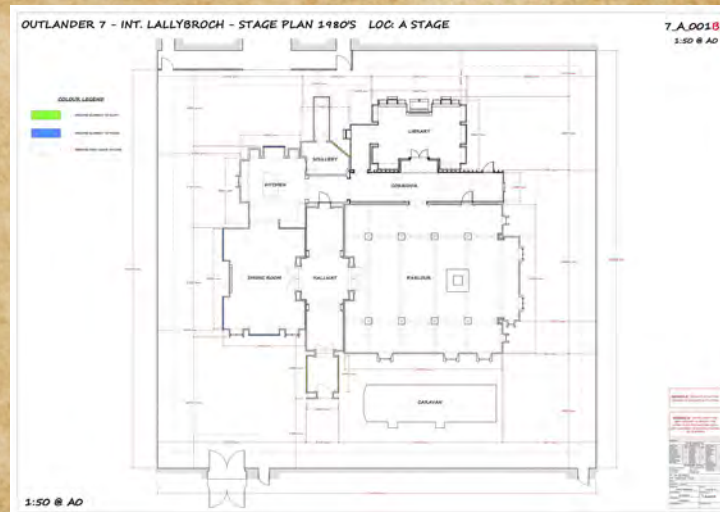


Int. Lallybroch Kitchen - 1980



INT. 1980 LALLYBROCH CASTLE

TECHNICAL DRAWING



INT. 1980 LALLYBROCH CASTLE

GRAPHIC



INT. 1980 LALLYBROCH CASTLE

GRAPHIC



INT. 1980 LALLYBROCH CASTLE

SET STILLS



INT. 1980 LALLYBROCH CASTLE

SET STILLS



INT. 1980 LALLYBROCH CASTLE

SET STILLS



INT. 1980 LALLYBROCH CASTLE

SET STILLS



INT. 1980 LALLYBROCH CASTLE

SET STILLS



INT. 1980 LALLYBROCH CASTLE

SET STILLS



INT. 1980 LALLYBROCH CASTLE

SET STILLS



INT. 1980 LALLYBROCH CASTLE

SET STILLS



INT. 1980 LALLYBROCH CASTLE

SET STILLS



INT. 1980 LALLYBROCH CASTLE

SET STILLS



INT. 1980 LALLYBROCH CASTLE

SET STILLS



INT. 1980 LALLYBROCH CASTLE

SET STILLS



EXT./INT. 1980 LALLYBROCH - TRAILER

CONCEPT ART



Ext. Lallybroch - 1980

EXT./INT. 1980 LALLYBROCH - TRAILER

CONCEPT ART



Ext. Lallybroch - 1980

EXT./INT. 1980 LALLYBROCH - TRAILER

CONCEPT ART



Int. Trailer



OUTLANDER
SEASON 7

EXT./INT. 1980 LALLYBROCH - TRAILER

CONCEPT ART



Int. Trailer

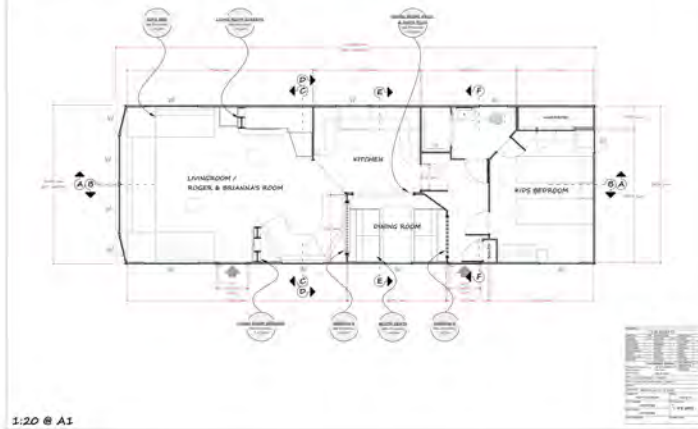


EXT./INT. 1980 LALLYBROCH - TRAILER

TECHNICAL DRAWING

OUTLANDER 7 - INT. LALLYBROCH - TRAILER - P & E'S SHEET 1
LOC: MIDHOPE CASTLE / E STAGE

7.45.001
1:20 @ A3



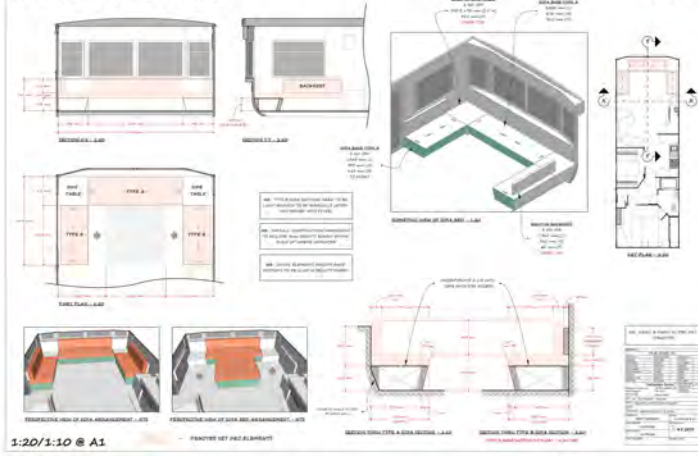
OUTLANDER 7 - INT. LALLYBROCH - TRAILER - P & E'S SHEET 2
LOC: MIDHOPE CASTLE / E STAGE

7.45.002
1:20 @ A3



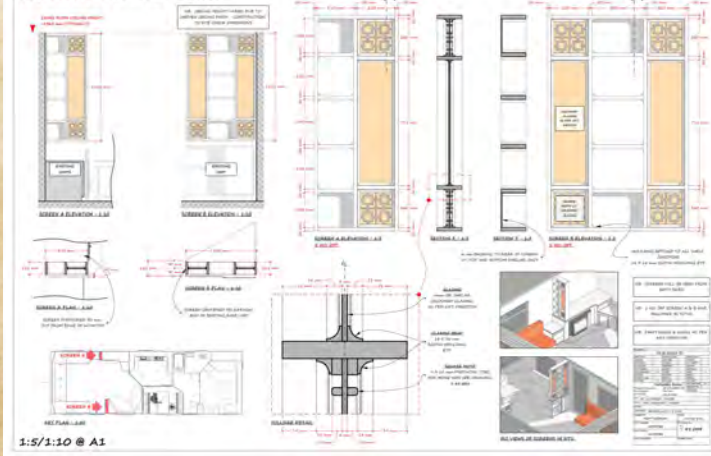
OUTLANDER 7 - INT. LALLYBROCH - TRAILER - SOFA BED CONSTRUCTION DRAWING
LOC: MIDHOPE CASTLE / E STAGE

7.45.003
1:20/1:10 @ A3



OUTLANDER 7 - INT. LALLYBROCH - TRAILER - LIVING ROOM SHELF / SCREENS
LOC: MIDHOPE CASTLE / E STAGE

7.45.004
1:5/1:10 @ A3



EXT./INT. 1980 LALLYBROCH - TRAILER

SET STILL



EXT./INT. 1980 LALLYBROCH - TRAILER

SET STILL



EXT./INT. 1980 LALLYBROCH - TRAILER

SET STILL



EXT./INT. 1980 LALLYBROCH - TRAILER

SET STILL



EXT./INT. 1980 LALLYBROCH - TRAILER

SET STILL



EXT. MOHAWK VILLAGE

CONCEPT ART



Ext. Mohawk Settlement



EXT. MOHAWK VILLAGE

CONCEPT ART



Ext. Mohawk Settlement



EXT. MOHAWK VILLAGE

TECHNICAL DRAWING

OUTLANDER S7 EXT. MOHAWK VILLAGE - SITE PLAN - PROPOSED WIGWAM LAYOUT - LOC: CAMBUSMORE 7_36_002C SCALE 1:100 @A1



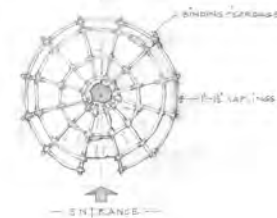
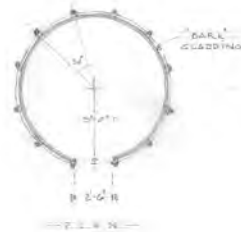
EXT. WIGWAMS - CAMBUSMORE

SCALE 1/2" = 1'-0"



FRONT ELEV.

EXTERIOR GLAD ONLY



NOTES
- As per Section 4 set - drawing no. 4/36/05
- Mohawk Village Wigwams
- MAKE AS OFF

Drawn by	7/36/05
Checked by	
Approved by	

EXT. MOHAWK VILLAGE

SET STILL



EXT. MOHAWK VILLAGE

SET STILL



EXT. MOHAWK VILLAGE

SET STILL



EXT. JOHNSON FARMHOUSE

CONCEPT ART



EXT. JOHNSON FARMHOUSE

CONCEPT ART



Ext. Johnson's



EXT. JOHNSON FARMHOUSE

CONCEPT ART



Ext. Johnson's



EXT. JOHNSON FARMHOUSE

CONCEPT ART

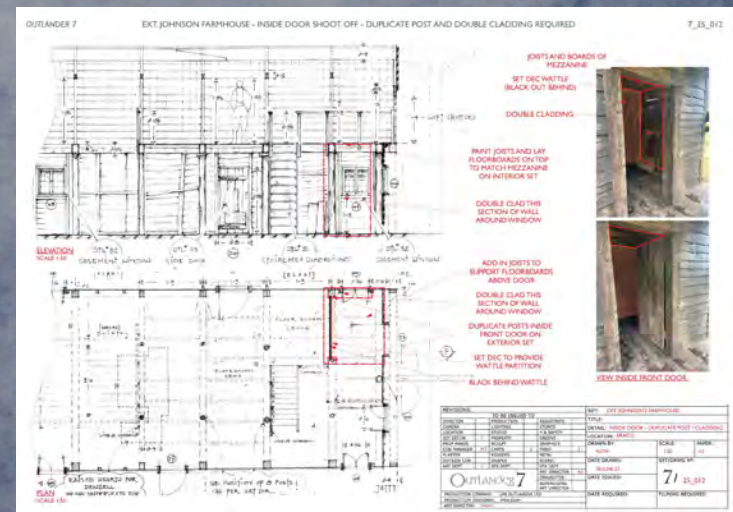
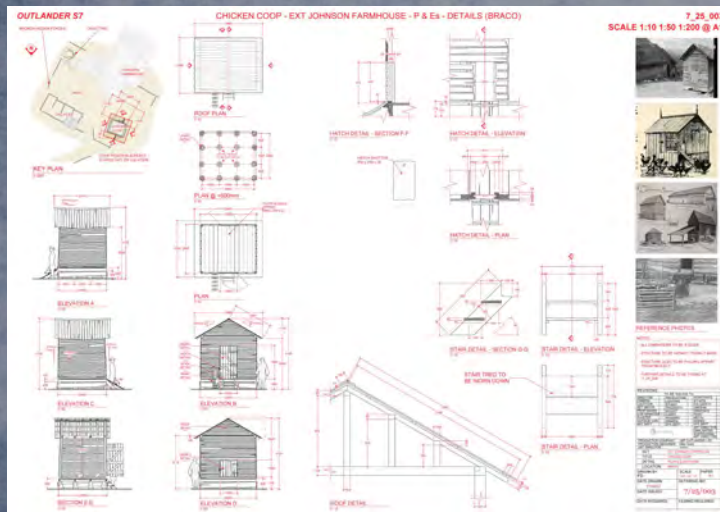
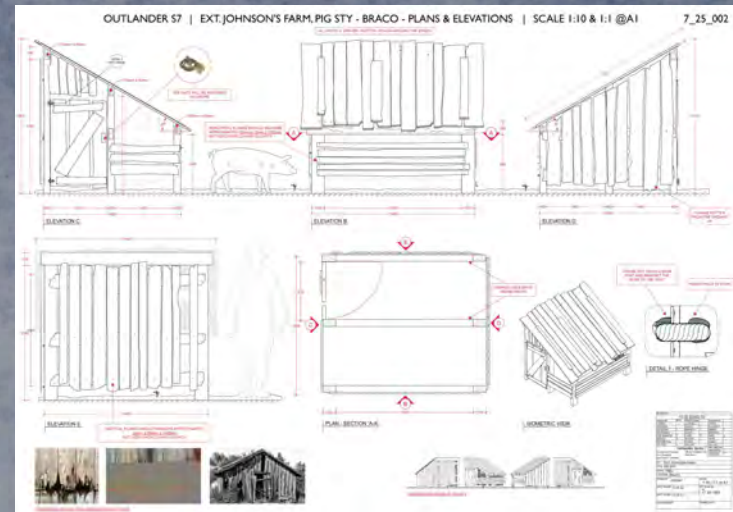
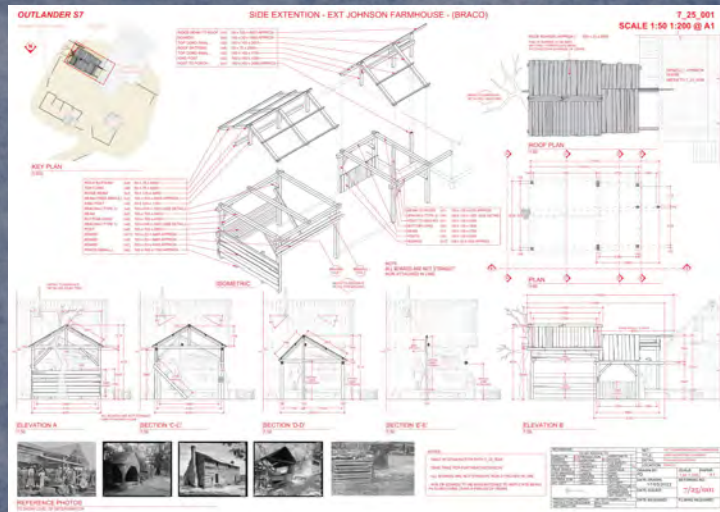


Ext. Johnson Farm



EXT. JOHNSON FARMHOUSE

TECHNICAL DRAWING



EXT. JOHNSON FARMHOUSE

SET STILL



EXT. JOHNSON FARMHOUSE

SET STILL



EXT. JOHNSON FARMHOUSE

SET STILL



EXT. JOHNSON FARMHOUSE

SET STILL



EXT. JOHNSON FARMHOUSE

SET STILL



EXT. JOHNSON FARMHOUSE

SET STILL



INT. JOHNSON FARMHOUSE - DINING ROOM

CONCEPT ART



INT. JOHNSON FARMHOUSE - DINING ROOM

CONCEPT ART



Int. Johnson Farmhouse



INT. JOHNSON FARMHOUSE - DINING ROOM

CONCEPT ART



Int. Johnson Farmhouse



INT. JOHNSON FARMHOUSE - DINING ROOM

CONCEPT ART

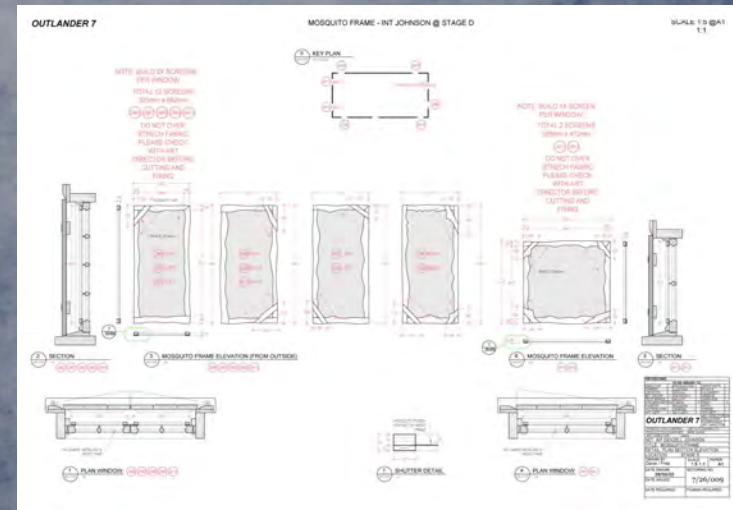
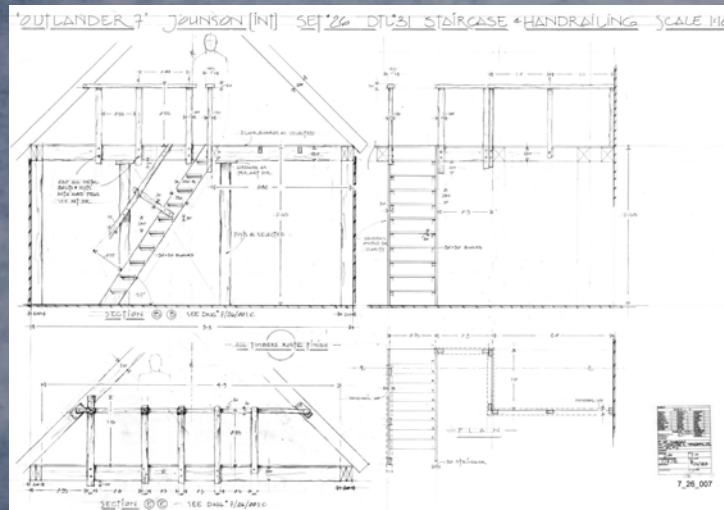
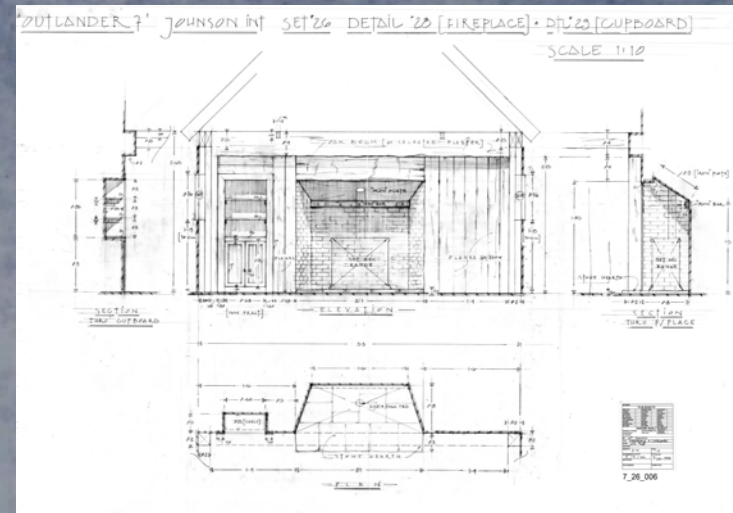
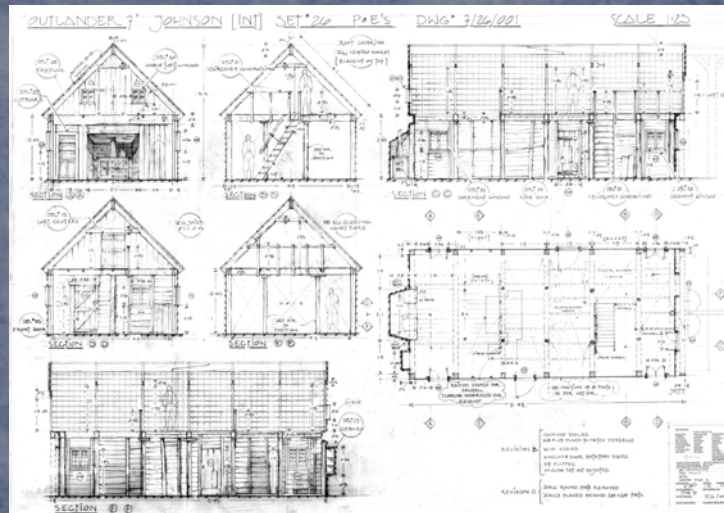


Int. Johnson Farmhouse



INT. JOHNSON FARMHOUSE - DINING ROOM

TECHNICAL DRAWING



INT. JOHNSON FARMHOUSE - DINING ROOM

SET STILL



INT. JOHNSON FARMHOUSE - DINING ROOM

SET STILL



INT. JOHNSON FARMHOUSE - DINING ROOM

SET STILL



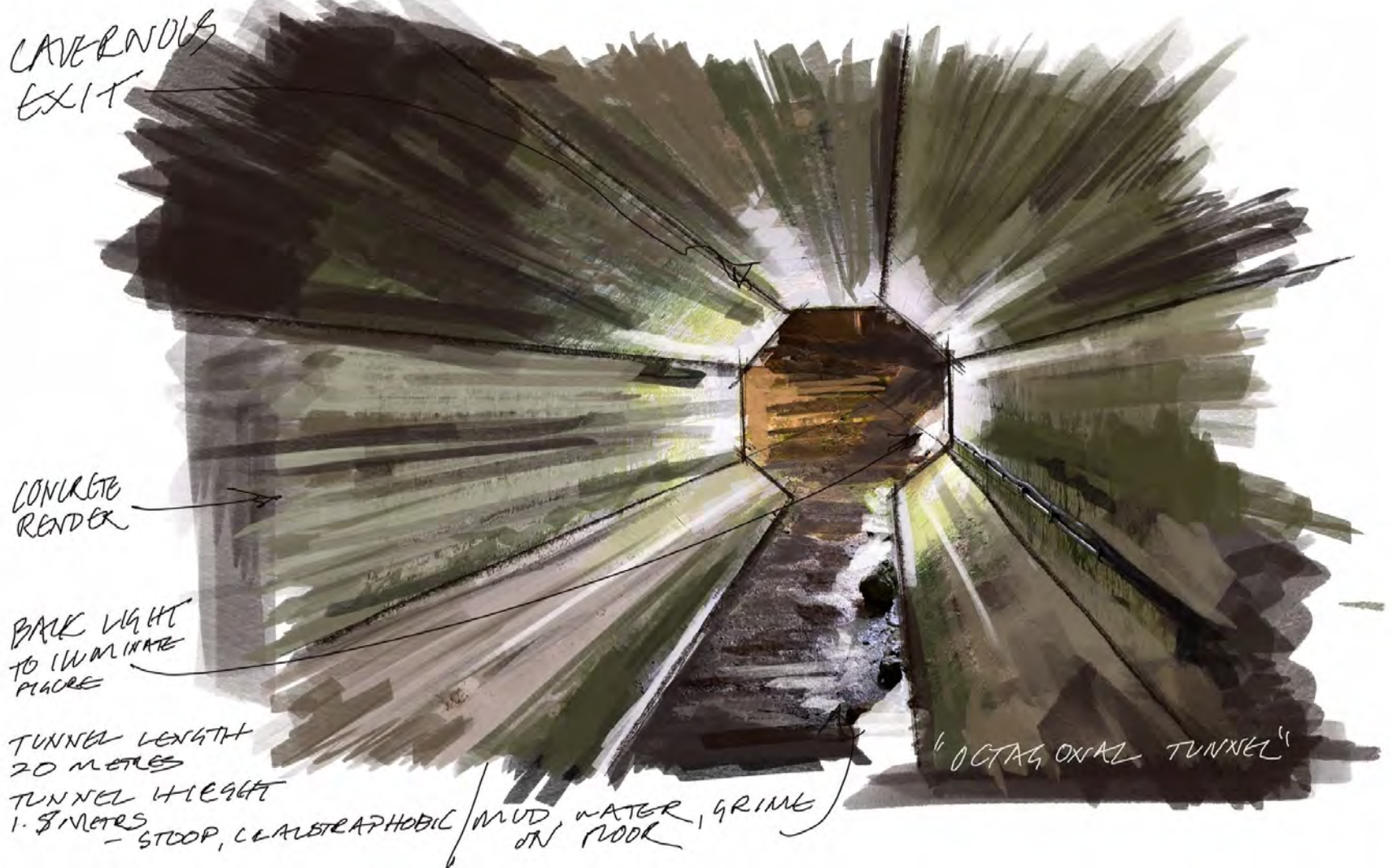
INT. JOHNSON FARMHOUSE - DINING ROOM

SET STILL

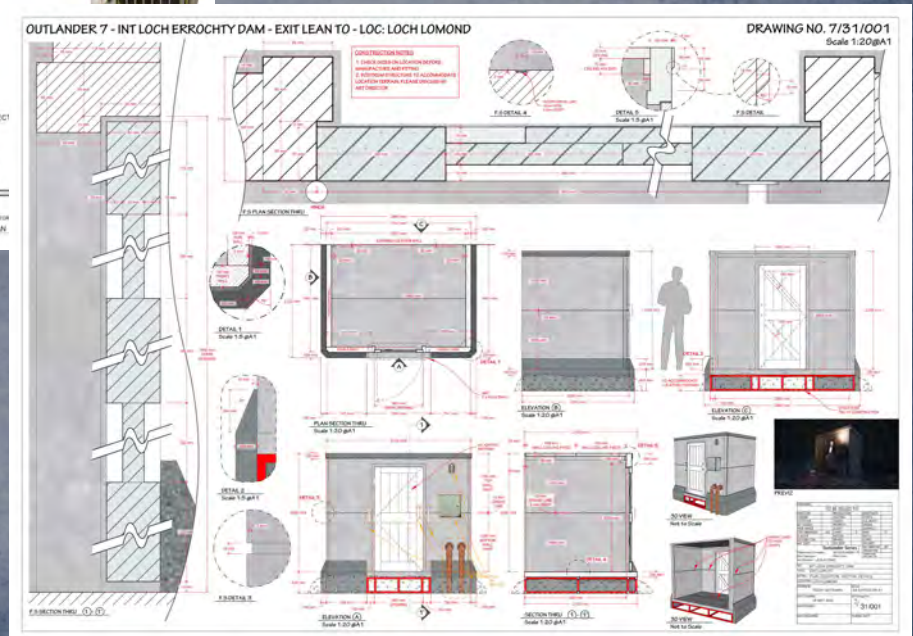


INT. LOCH ERROCHTY DAM

CONCEPT ART



TECHNICAL DRAWING



INT. LOCH ERROCHTY DAM

SET STILL



INT. LOCH ERROCHTY DAM

SET STILL



INT. LOCH ERROCHTY DAM

SET STILL



INT. LOCH ERROCHTY DAM

SET STILL



INT. LOCH ERROCHTY DAM

SET STILL



INT. LOCH ERROCHTY DAM

SET STILL



INT. LOCH ERROCHTY DAM

SET STILL



INT. LOCH ERROCHTY DAM

SET STILL



EXT. FORT TICONDEROGA

CONCEPT ART



EXT. FORT TICONDEROGA

CONCEPT ART



EXT. FORT TICONDEROGA

CONCEPT ART



Fort Ticonderoga



EXT. FORT TICONDEROGA

CONCEPT ART



Fort Ticonderoga - Continental

EXT. FORT TICONDEROGA

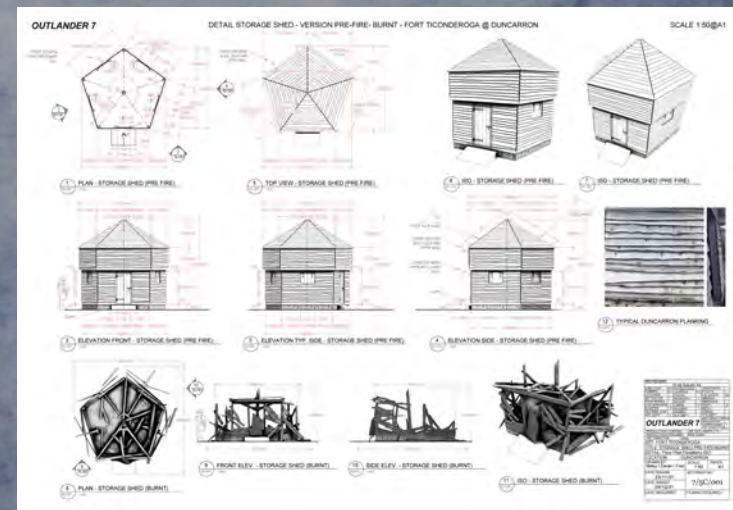
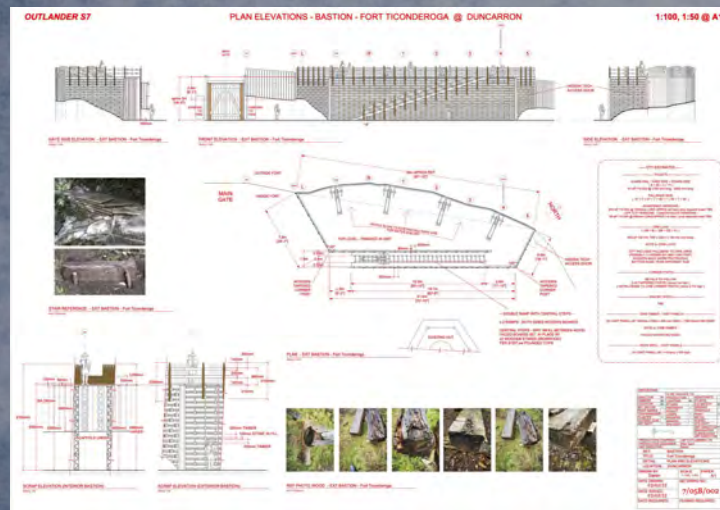
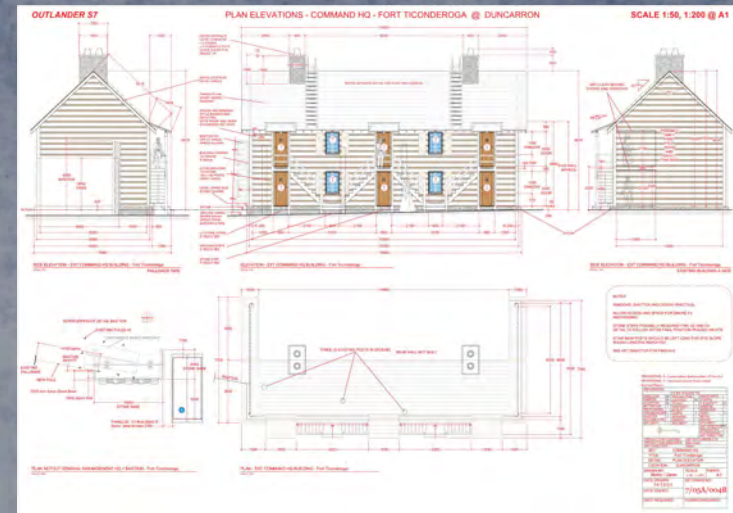
CONCEPT ART



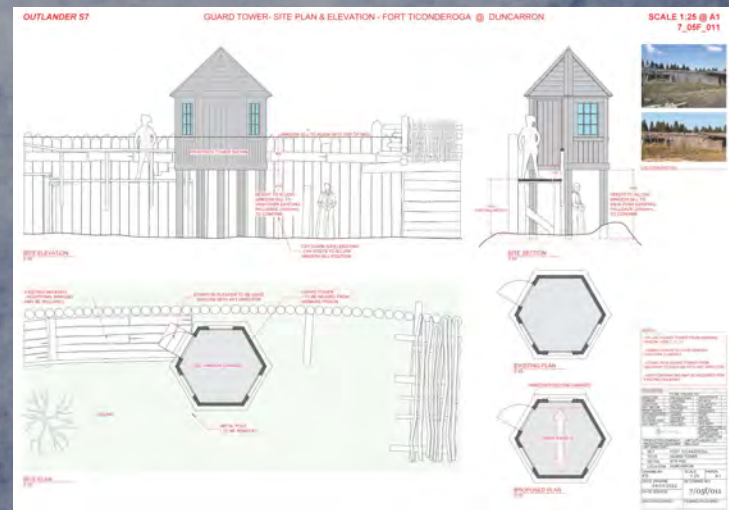
Fort Ticonderoga - Continental

EXT. FORT TICONDEROGA

TECHNICAL DRAWING

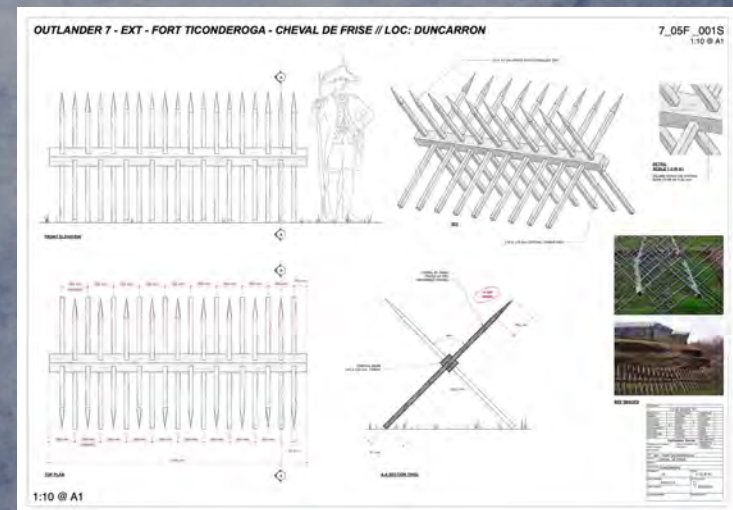
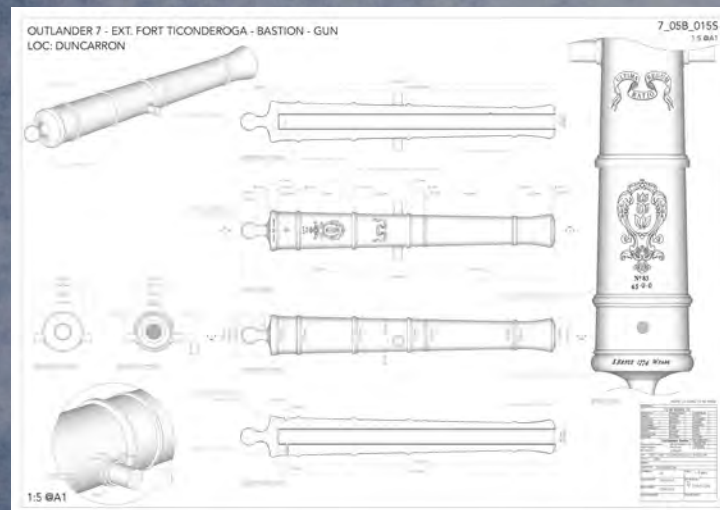
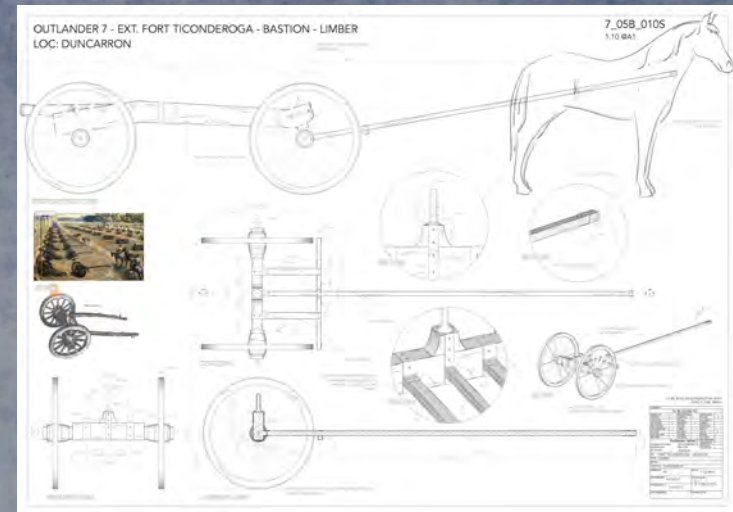
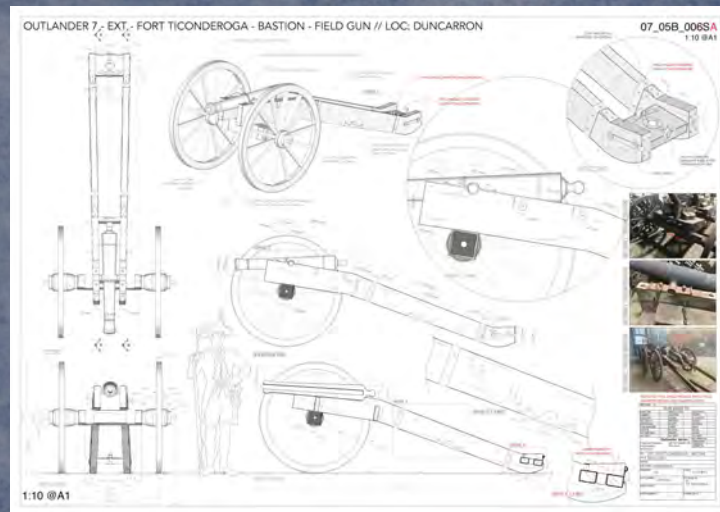


TECHNICAL DRAWING



EXT. FORT TICONDEROGA

TECHNICAL DRAWING



EXT. FORT TICONDEROGA

SET STILL



EXT. FORT TICONDEROGA

SET STILL



EXT. FORT TICONDEROGA

SET STILL



EXT. FORT TICONDEROGA

SET STILL



EXT. FORT TICONDEROGA

SET STILL



EXT. FORT TICONDEROGA

SET STILL



EXT. FORT TICONDEROGA

SET STILL



EXT. FORT TICONDEROGA

SET STILL



EXT. FORT TICONDEROGA

SET STILL



EXT. FORT TICONDEROGA

SET STILL



EXT. FORT TICONDEROGA

SET STILL



EXT. FORT TICONDEROGA

SET STILL



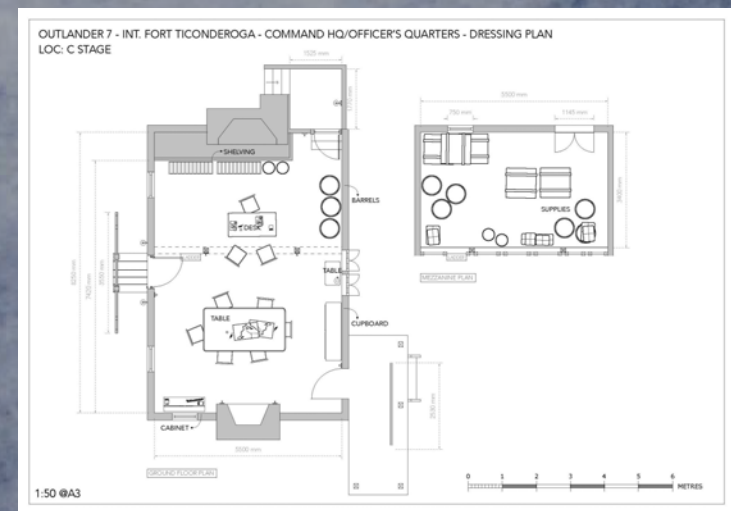
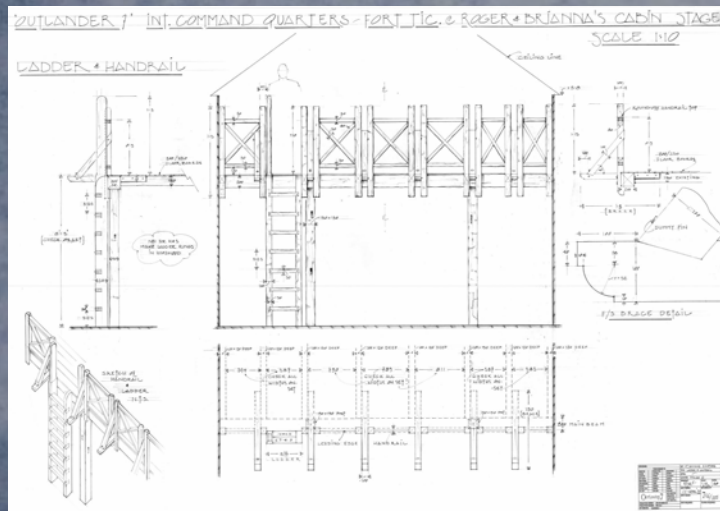
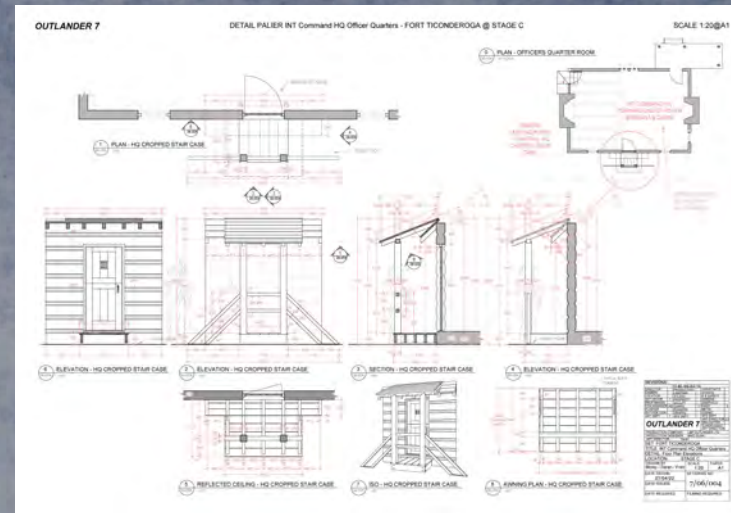
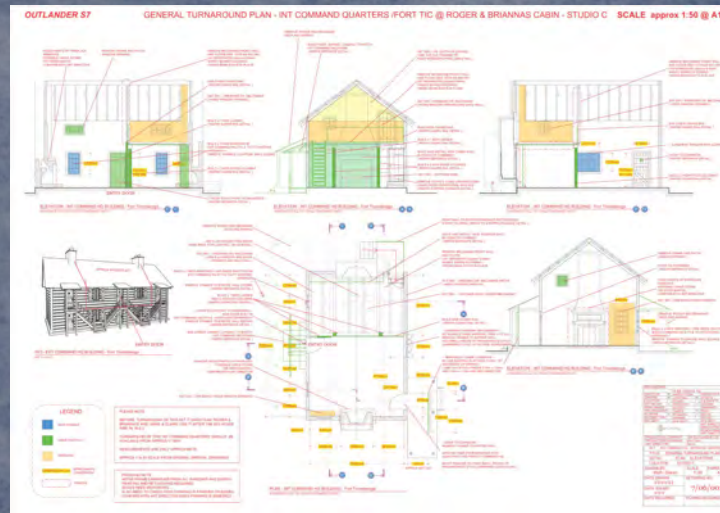
EXT. FORT TICONDEROGA

SET STILL



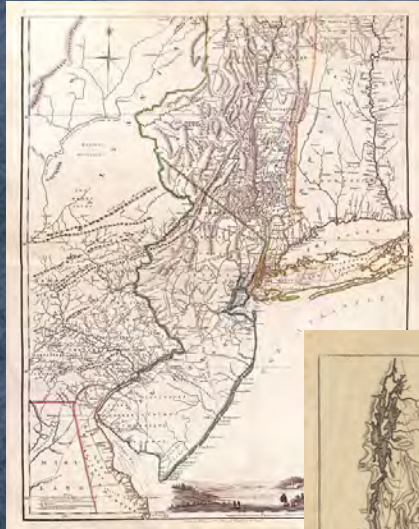
INT. FORT TICONDEROGA - COMMAND HQ

TECHNICAL DRAWING



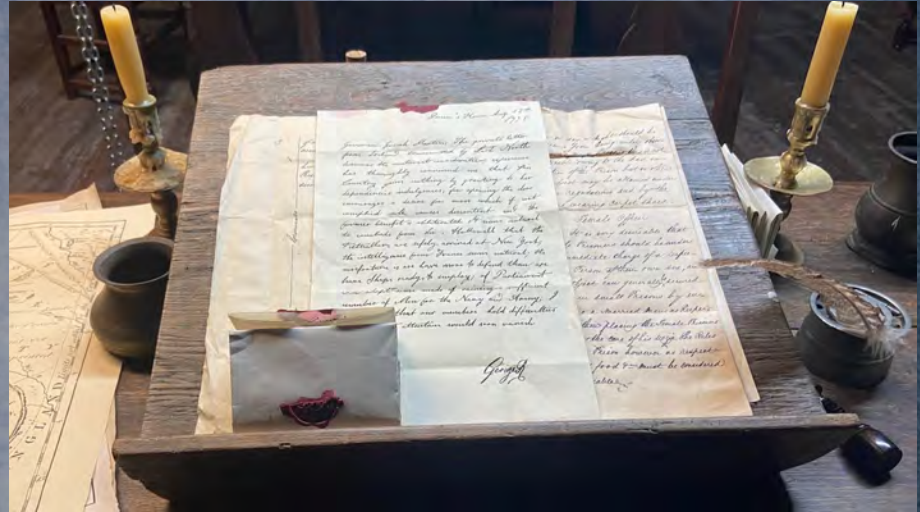
INT. FORT TICONDEROGA - COMMAND HQ

GRAPHIC



INT. FORT TICONDEROGA - COMMAND HQ

GRAPHIC



INT. FORT TICONDEROGA - COMMAND HQ

SET STILL



INT. FORT TICONDEROGA - COMMAND HQ

SET STILL



INT. FORT TICONDEROGA - COMMAND HQ

SET STILL



INT. FORT TICONDEROGA - COMMAND HQ

SET STILL



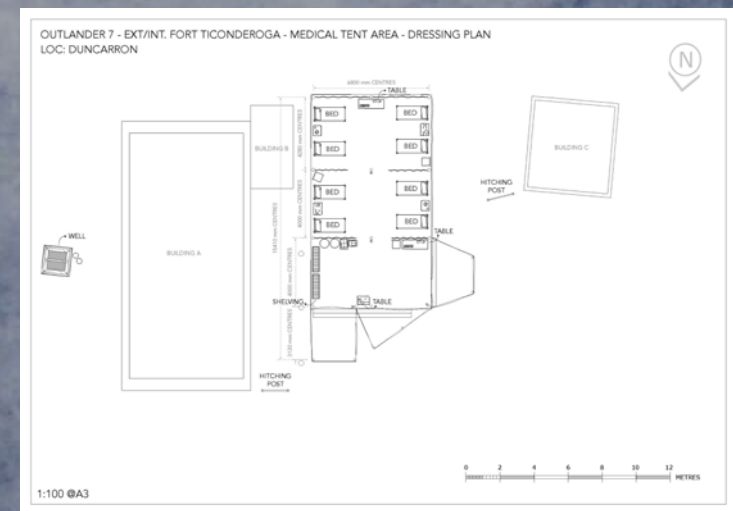
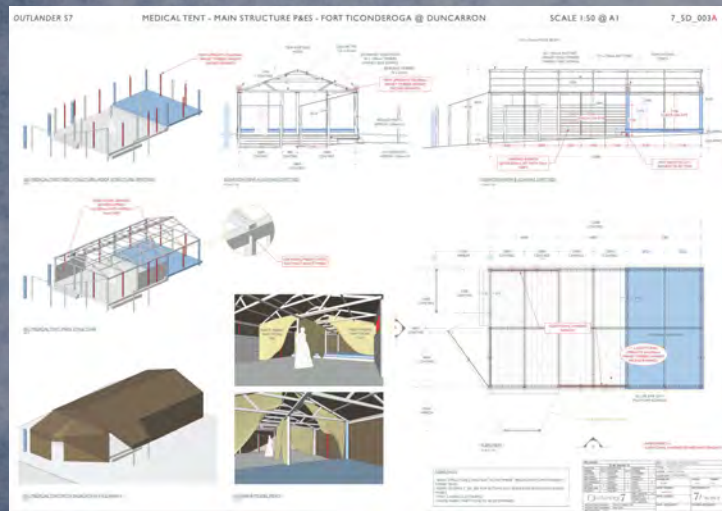
INT. FORT TICONDEROGA - COMMAND HQ

SET STILL



INT. FORT TICONDEROGA - MEDICAL TENT

TECHNICAL DRAWING



INT. FORT TICONDEROGA - MEDICAL TENT

SET STILL



INT. FORT TICONDEROGA - MEDICAL TENT

SET STILL



INT. FORT TICONDEROGA - MEDICAL TENT

SET STILL



INT. FORT TICONDEROGA - MEDICAL TENT

SET STILL



INT. FORT TICONDEROGA - MEDICAL TENT

SET STILL

