



# The Creator

**Production Designer James Clyne**

Supervising Art Director Chaiyan Chunsuttiwat  
& Shira Hockman  
Set Decorator Claire Levinson-Gendler





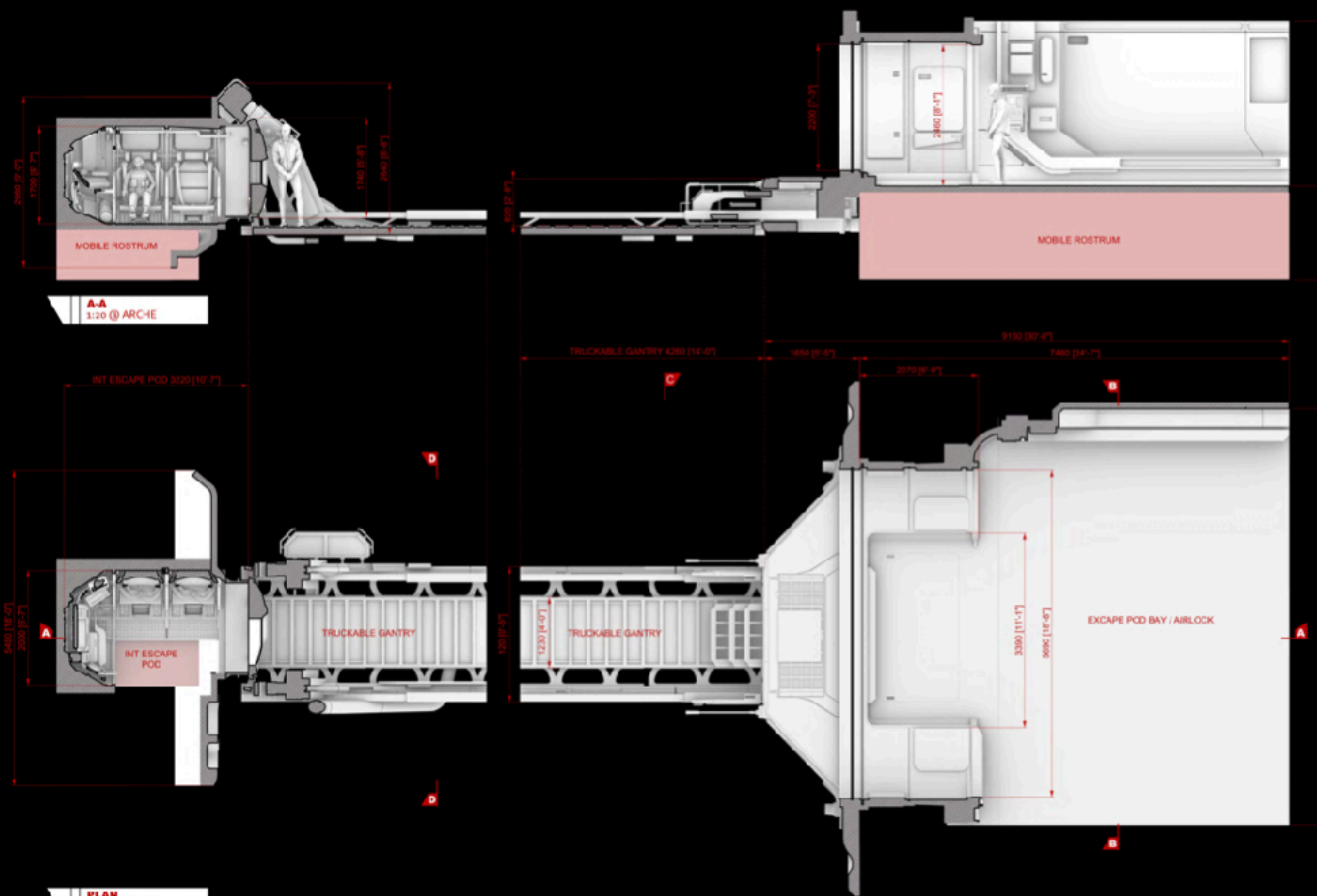
<b>TRUE LOVE GRAPHICS - AIRLOCK - CONTROL PANEL</b>				#SC -
				D: 19/04/22
PRODUCTION DESIGNER: JAMES CLYNE	SET DECCRATOR: CLAIRE LEVINSON-GENDLER	SAD: SHIRA HOCKMAN	LOC/STAGE: PW STUDIOS STAGE 3	CLEARANCE: <b>NOT CLEAR</b> - CLEARED

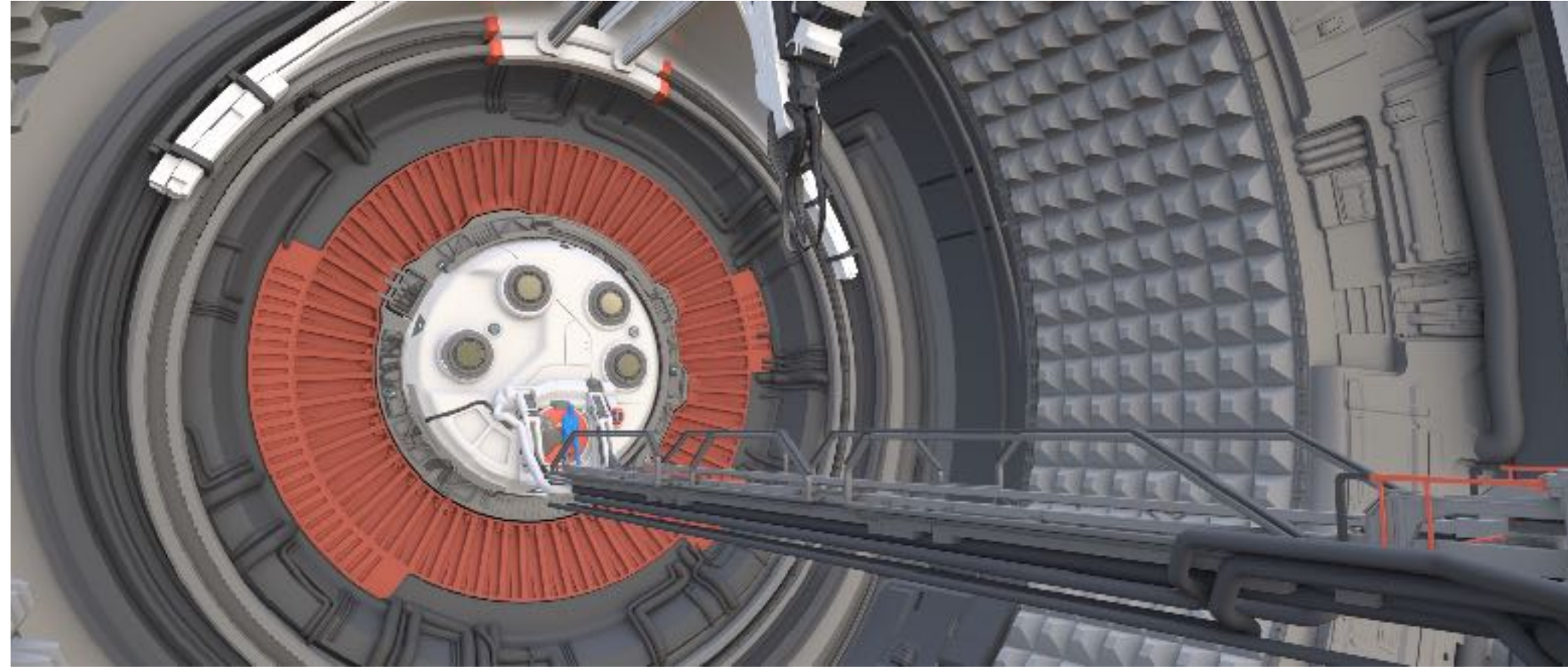
The technical drawing shows two views of the red control panel. The front view on the left features a screen, a keyboard, and a prominent 'EMERGENCY' button with a downward arrow. The side view on the right shows the panel's profile and various ports. Callouts include 'R2D' at the top, 'EMERGENCY' with a downward arrow on the left, and 'EMERGENCY' with a downward arrow on the front panel. A 'G' logo is visible on the right side. Technical specifications are listed in the center: 'SAY: 1.000000', 'L2N: 1.000000', 'M2N: 1.000000', 'W2N: 1.000000', 'H2N: 1.000000', 'W2N: 1.000000', 'H2N: 1.000000'. A 'G' logo is also present on the right side of the drawing.

# 真 TRUE LOVE

## INT NOMAD INT ESCAPE POD BAY(AIRLOCK) AND INT/EXT ESCAPE POD



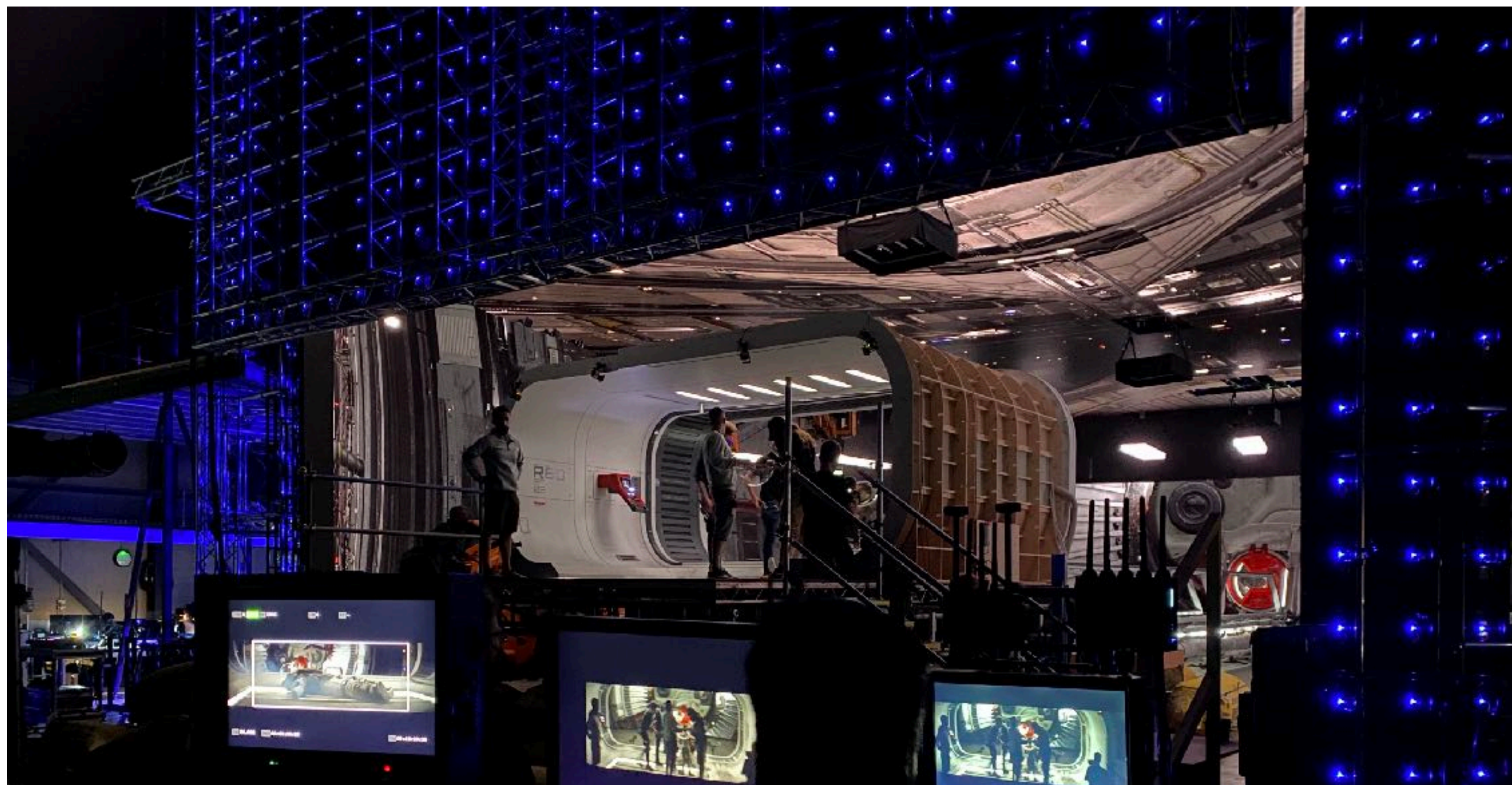
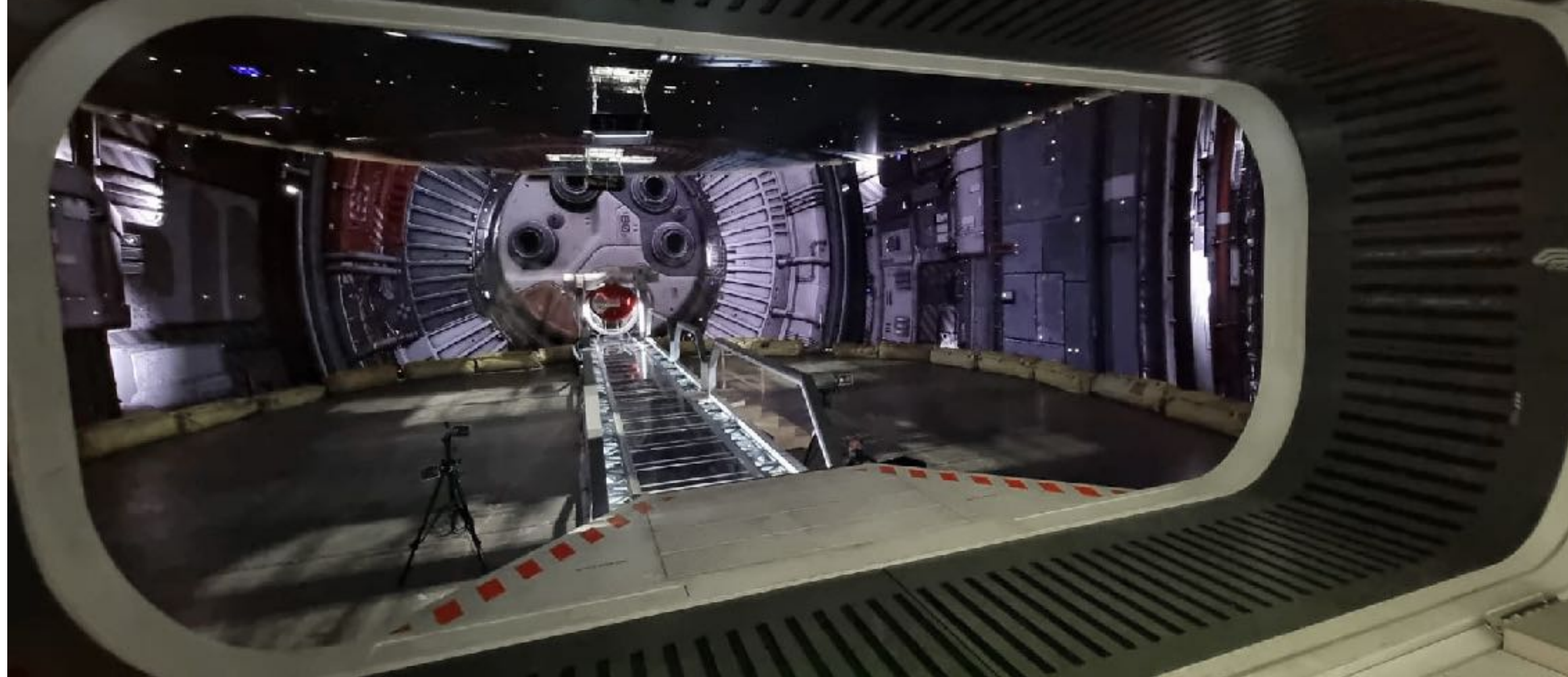
- NOTES**
- SLATED FOR VOLUME STAGE
  - 4\"/>
  - BUILT ON MOBILE ROSTRUM AND WHEELED INTO PLACE
  - FINISHES ARE HIGH GLOSS GLOSSMATE SATIN SPRAY AND METAL
  - RECESSED LIGHTING THROUGHOUT
  - ESCAPE POD TO HAVE PARTIAL WINDOW BUILT IN BEHIND PIECES OF SHUTTLE AND POSSIBLY A CONICAL WATER TANK
  - ESCAPE PODS DOOR TO BE SEEN IN OPEN AND CLOSED POSITIONS (TWO NOT SEEN MOVING ON CAMERA)
  - GLASS IN AIRLOCK WINDOW TO BE TRUCKABLE OR WHEELED TO BE FLIGHT
  - AIRLOCK HAS A PROP BUILT CONTROL PANEL
  - ESCAPE POD HAS A PROP BUILT MANUAL LAUNCH LEVER
  - INTERIOR OF ESCAPE POD TO BE TRUCKABLE TO GREEN SCREEN STAGE



\*\*\*PRELIMINARY\*\*\*  
\*\*FOR COSTING PURPOSES ONLY\*\*

PLAN  
1:10 @ ARC-E

A-A  
1:20 @ ARC-E





TO OPEN

1 PULL THE HANDLE

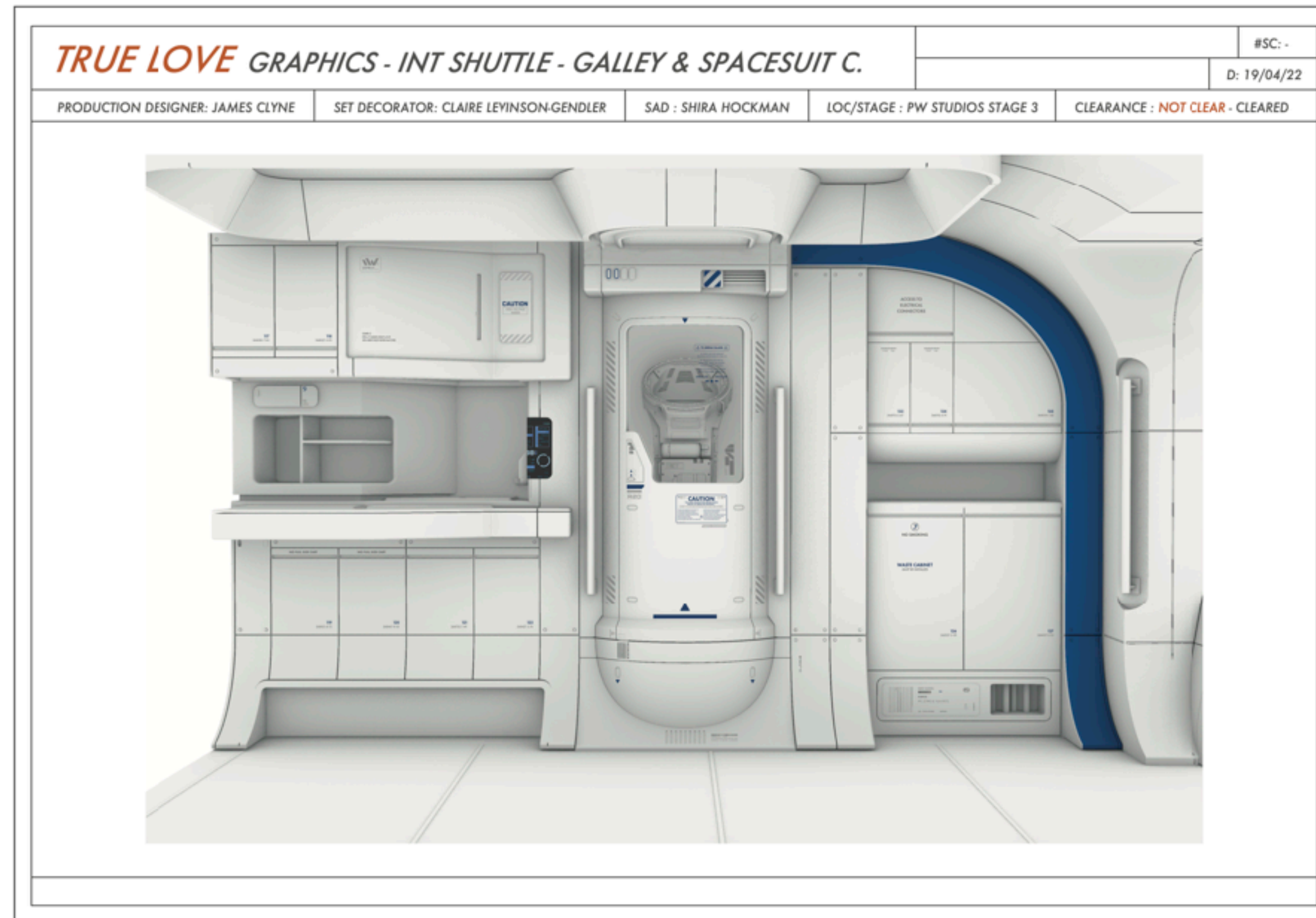
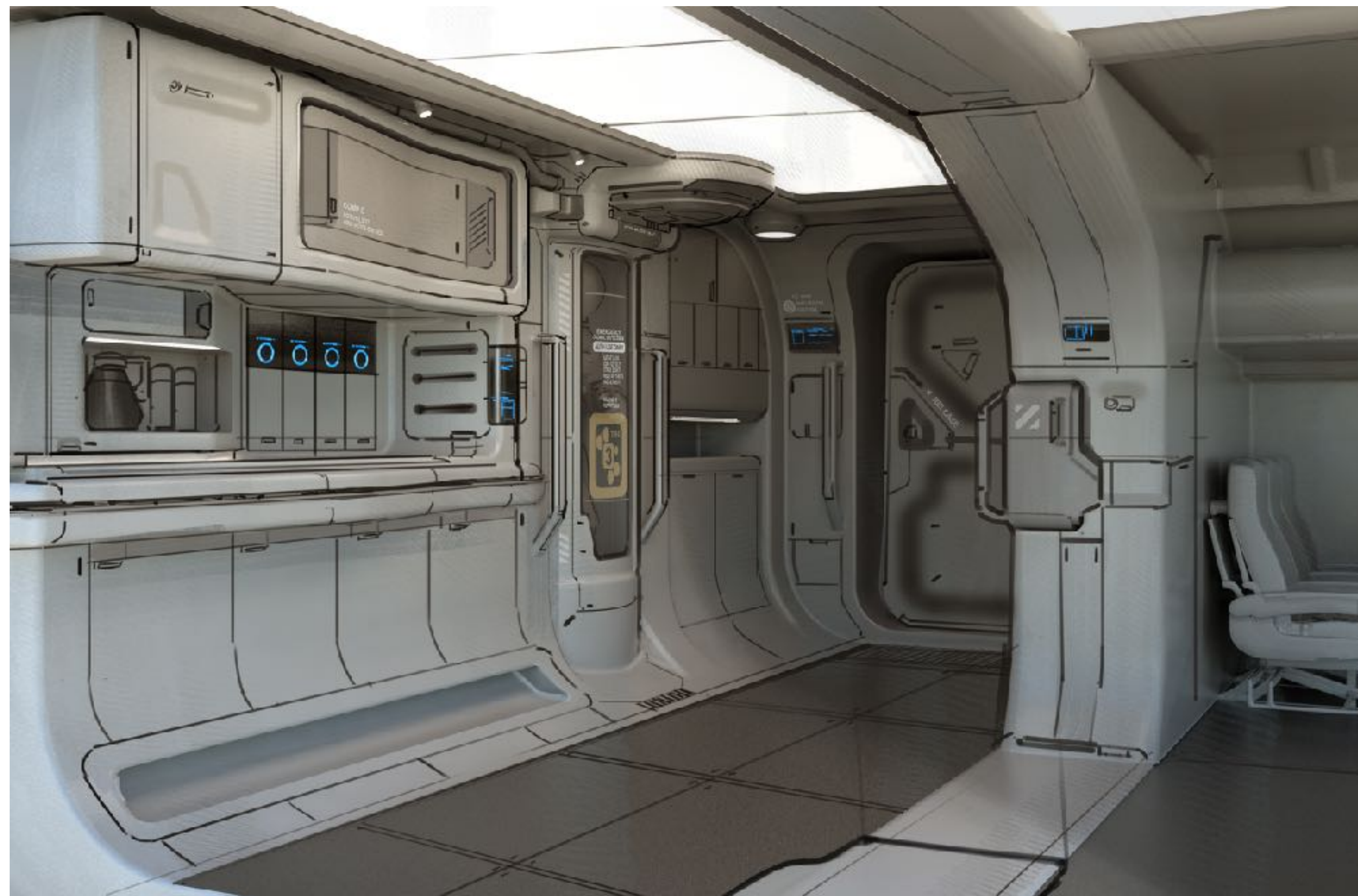
2 APPLY DOWNWARD FORCE ON THE HANDLE TO OPEN THE PANEL

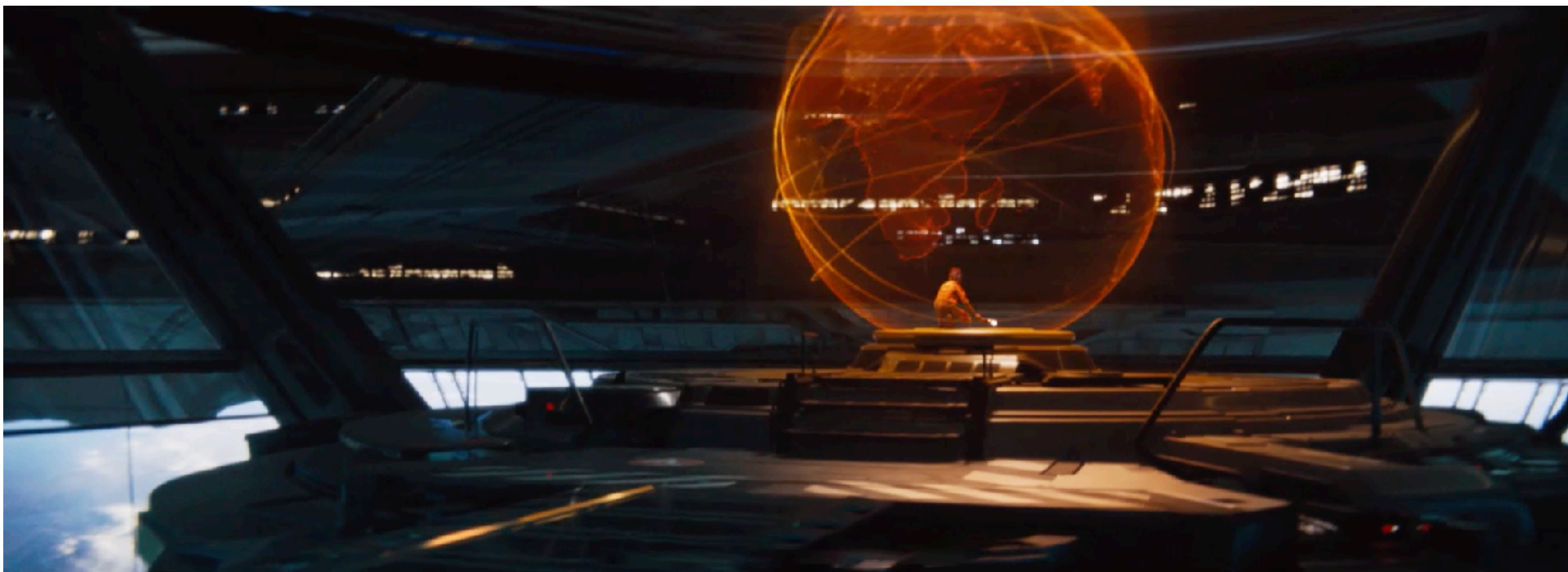
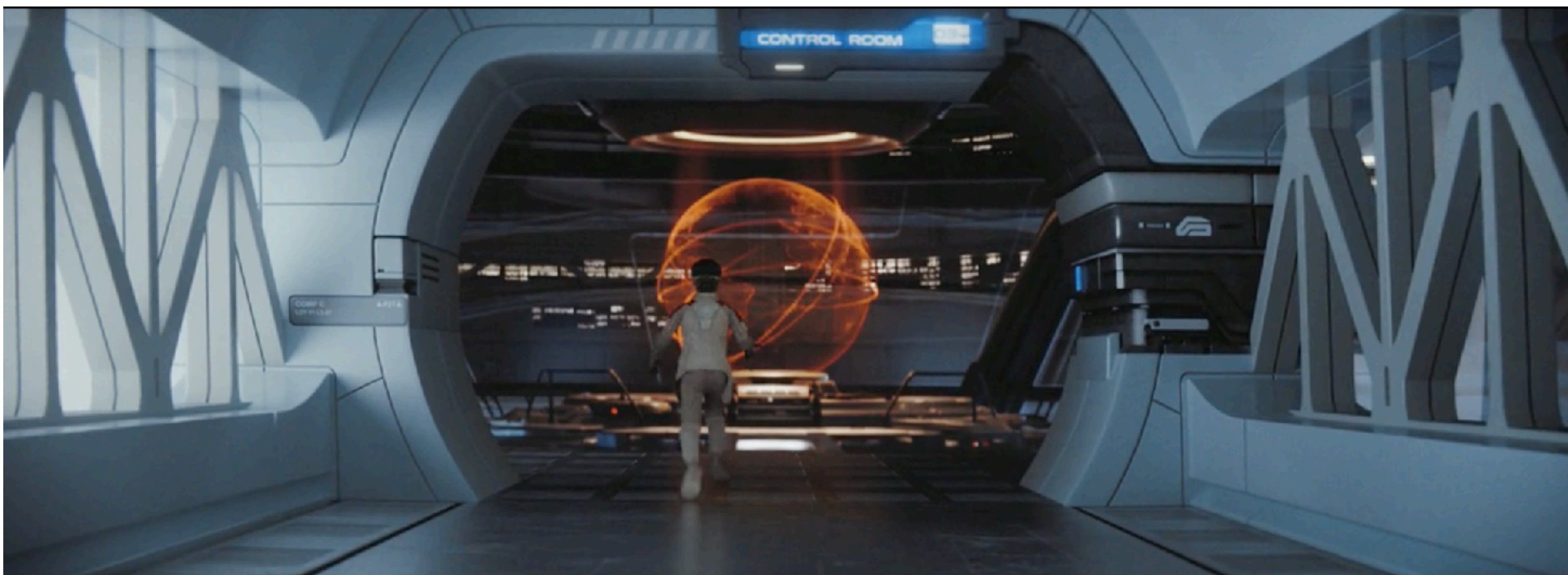
TRAK 5480-008  
LW 5480-001







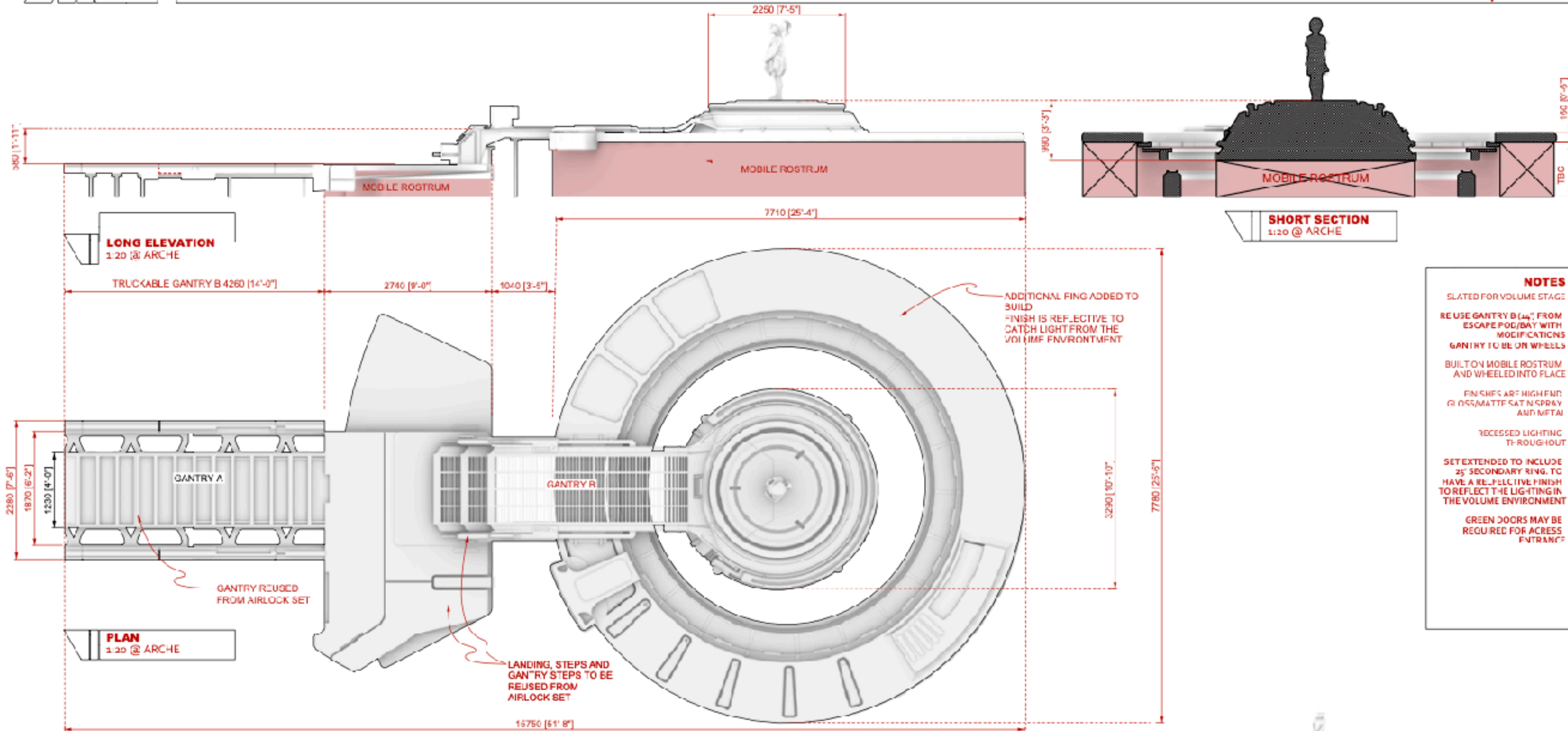




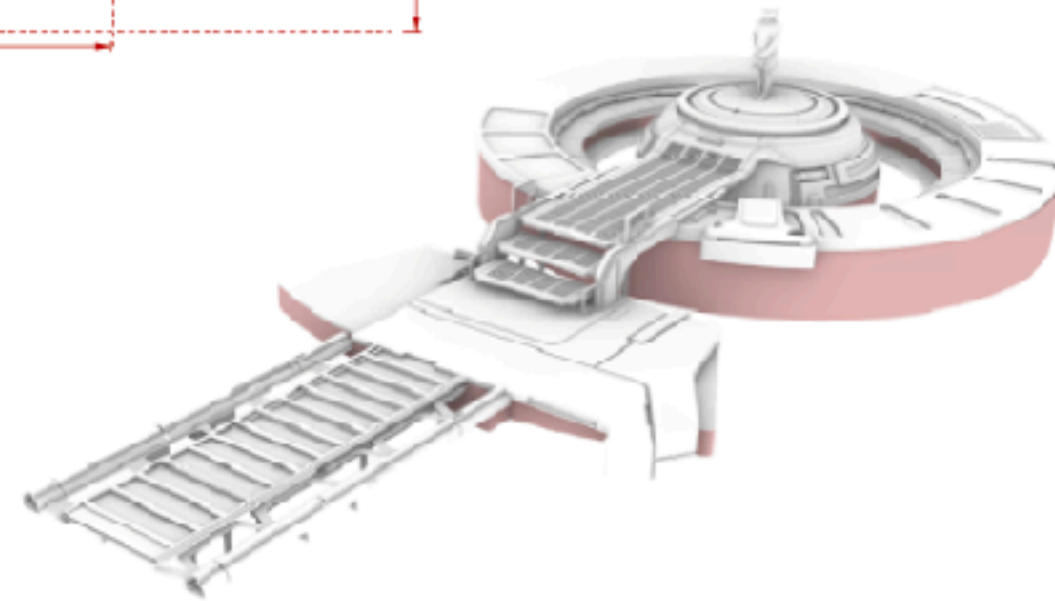
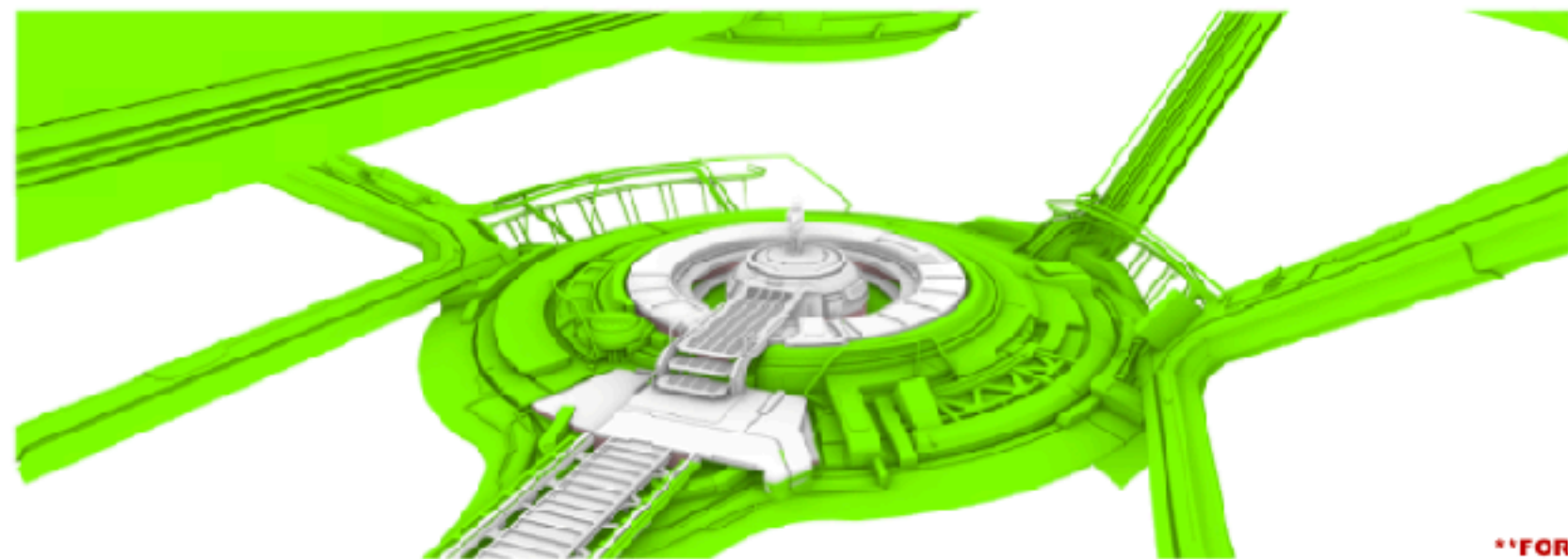


# TRUE LOVE

INT NOMAD  
HUB | REV A



- NOTES**
- SLATED FOR VOLUME STAGE
  - REUSE GANTRY B (LIT) FROM ESCAPE POD/BAY WITH MODIFICATIONS
  - GANTRY TO BE ON WHEELS
  - BUILT ON MOBILE ROSTRUM AND WHEELED INTO PLACE
  - FINISHES ARE HIGH END: GLOSS, MATTE SATIN, GUNMETAL AND METAL
  - RECESSED LIGHTING THROUGHOUT
  - SET EXTENDED TO INCLUDE 25" SECONDARY RING TO HAVE A REFLECTIVE FINISH TO REFLECT THE LIGHTING IN THE VOLUME ENVIRONMENT
  - GREEN DOORS MAY BE REQUIRED FOR ACCESS ENTRANCE



**\*\*PRELIMINARY \*\***  
**\*\*FOR COSTING PURPOSES ONLY\*\***







