



EPISODE 306

EVERYBODY HAS A PLAN
'TIL THEY GET PUNCHED
IN THE FACE



Aretuza - Grand Courtyard



Aretuza - Grand Courtyard



Aretuza - Grand Courtyard



Aretuza - Grand Courtyard

306



Aretuza - Grand Courtyard



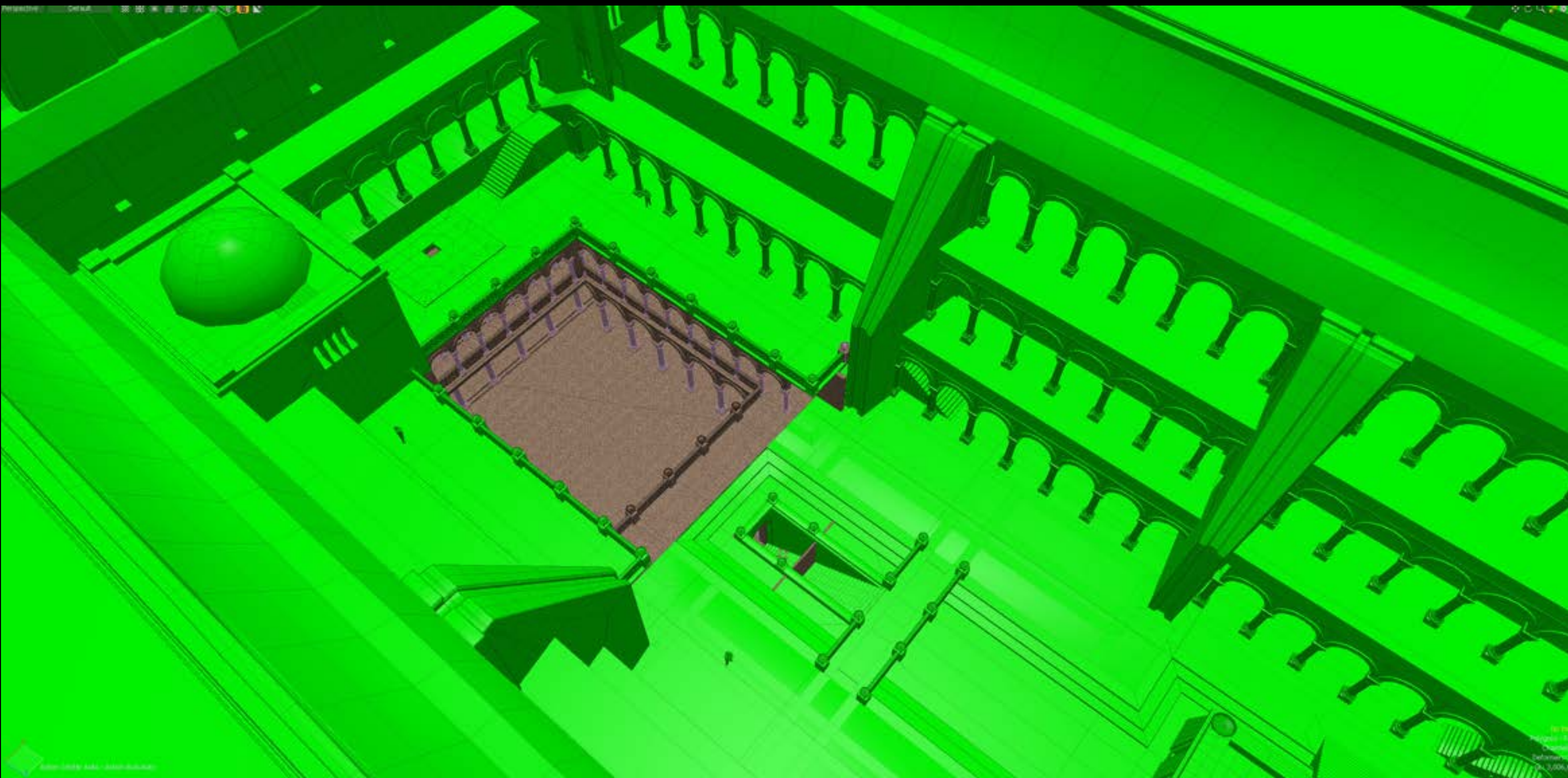
Aretuza - Grand Courtyard



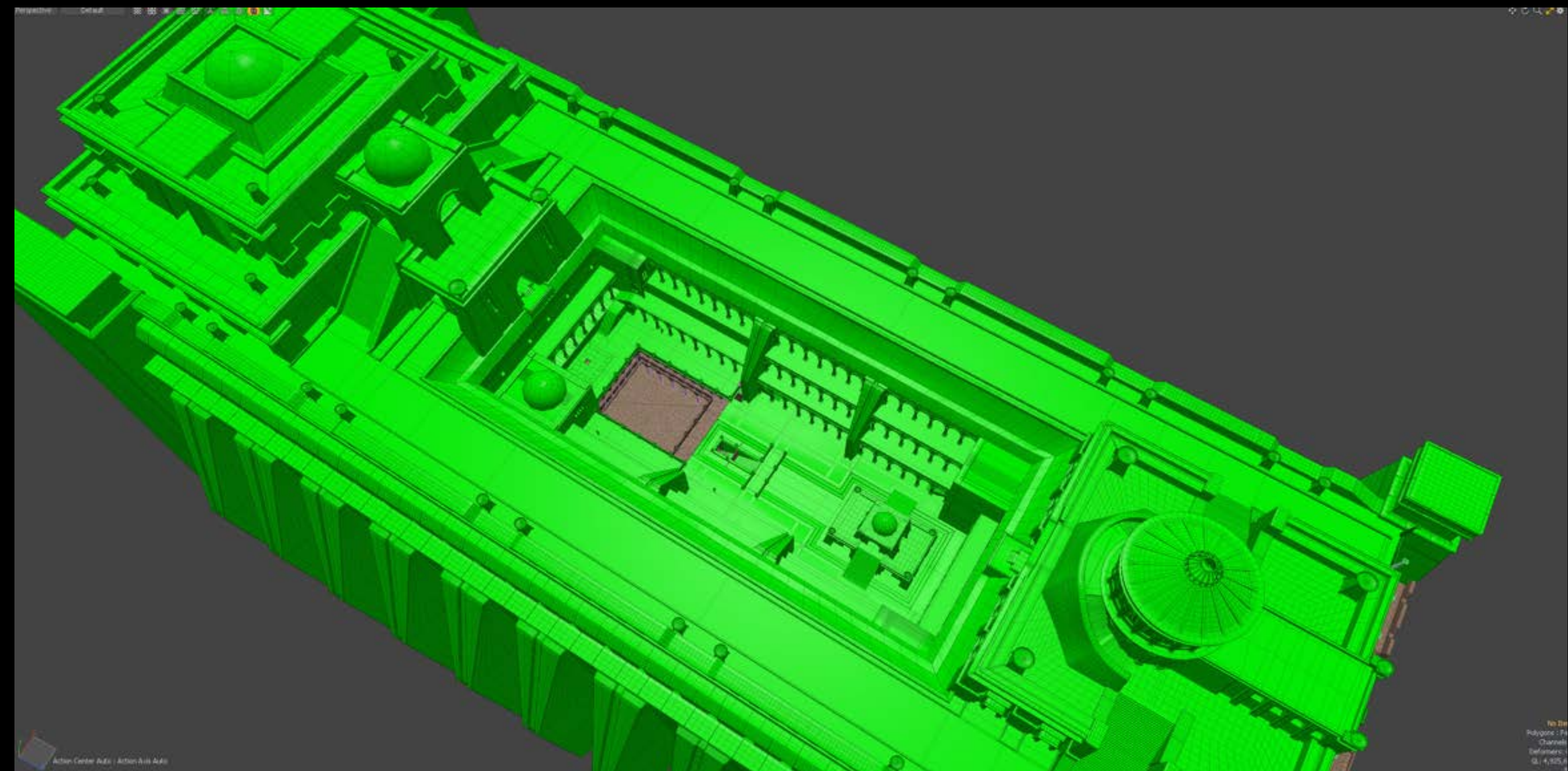
Aretuza - Grand Courtyard



Aretuza - Grand Courtyard



Aretuza - Grand Courtyard



Aretuza - Grand Courtyard

306



Aretuza - Courtyard - Ring of Fire



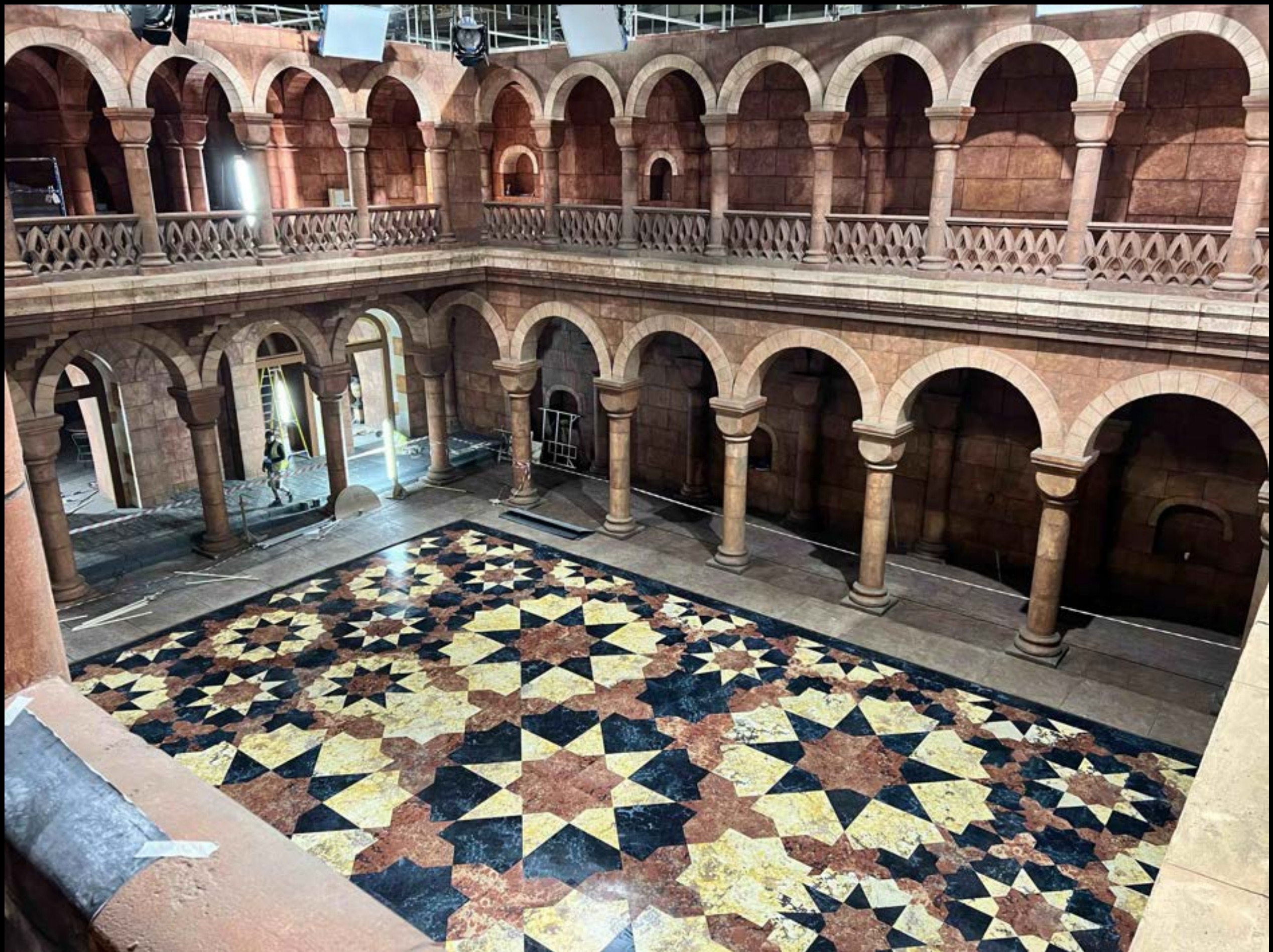
Aretuza - Courtyard - Ring of Fire



Aretuza - Grand Courtyard



Aretuza - Grand Courtyard



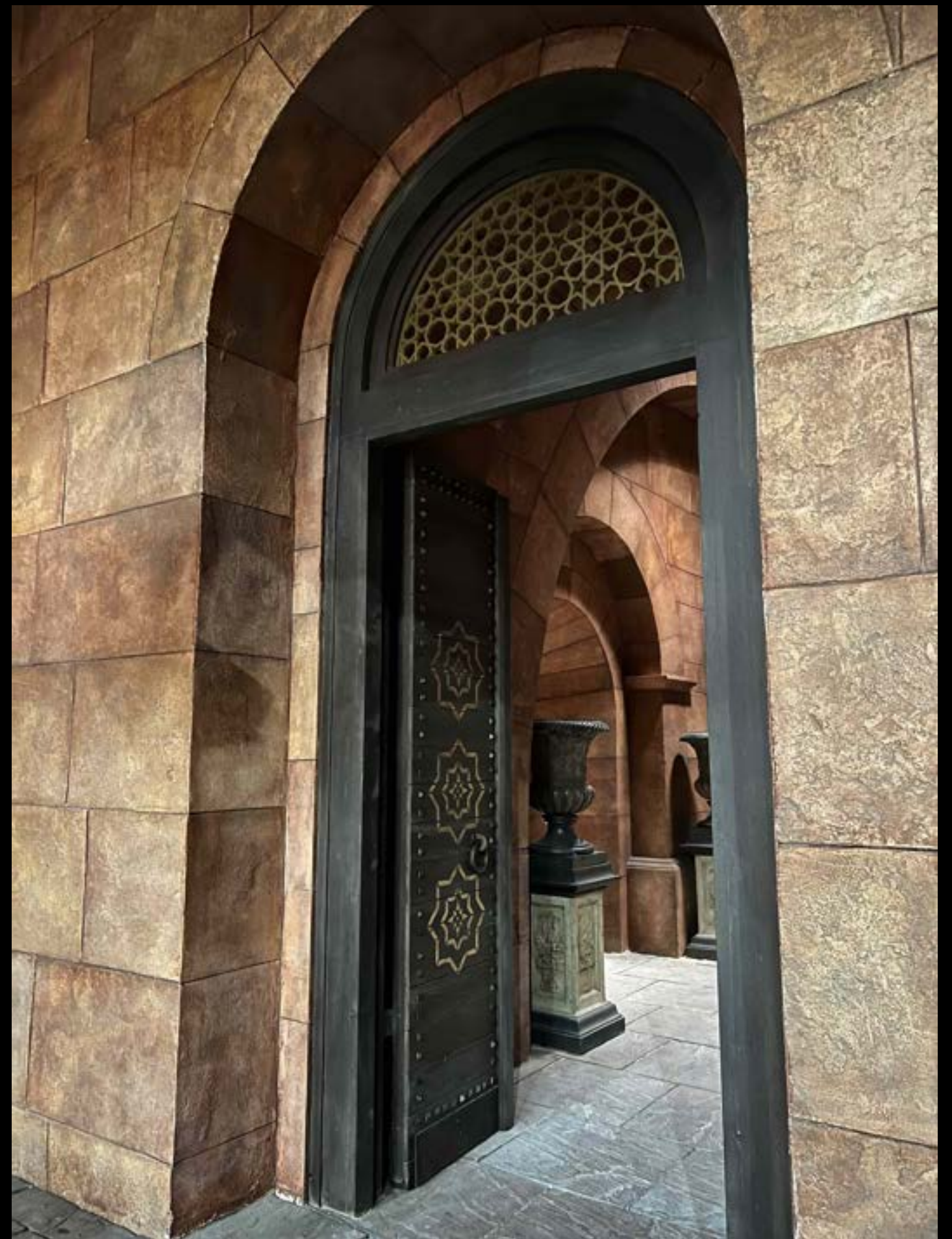
Aretuza - Grand Courtyard



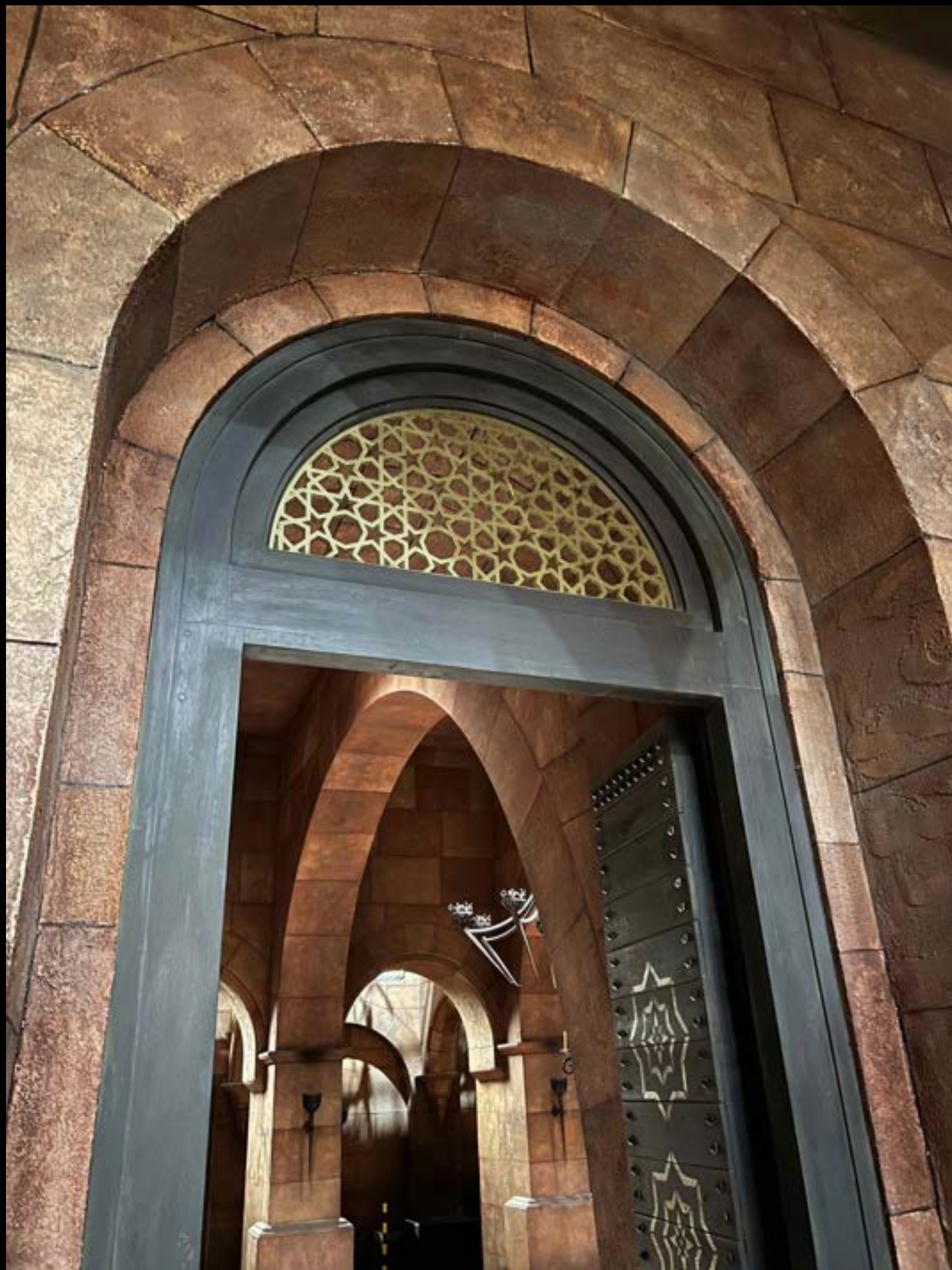
Aretuza - Grand Courtyard



Aretuza - Grand Courtyard



Aretuza - Grand Courtyard



Aretuza - Grand Courtyard



Aretuza - Courtyard - Ring of Fire

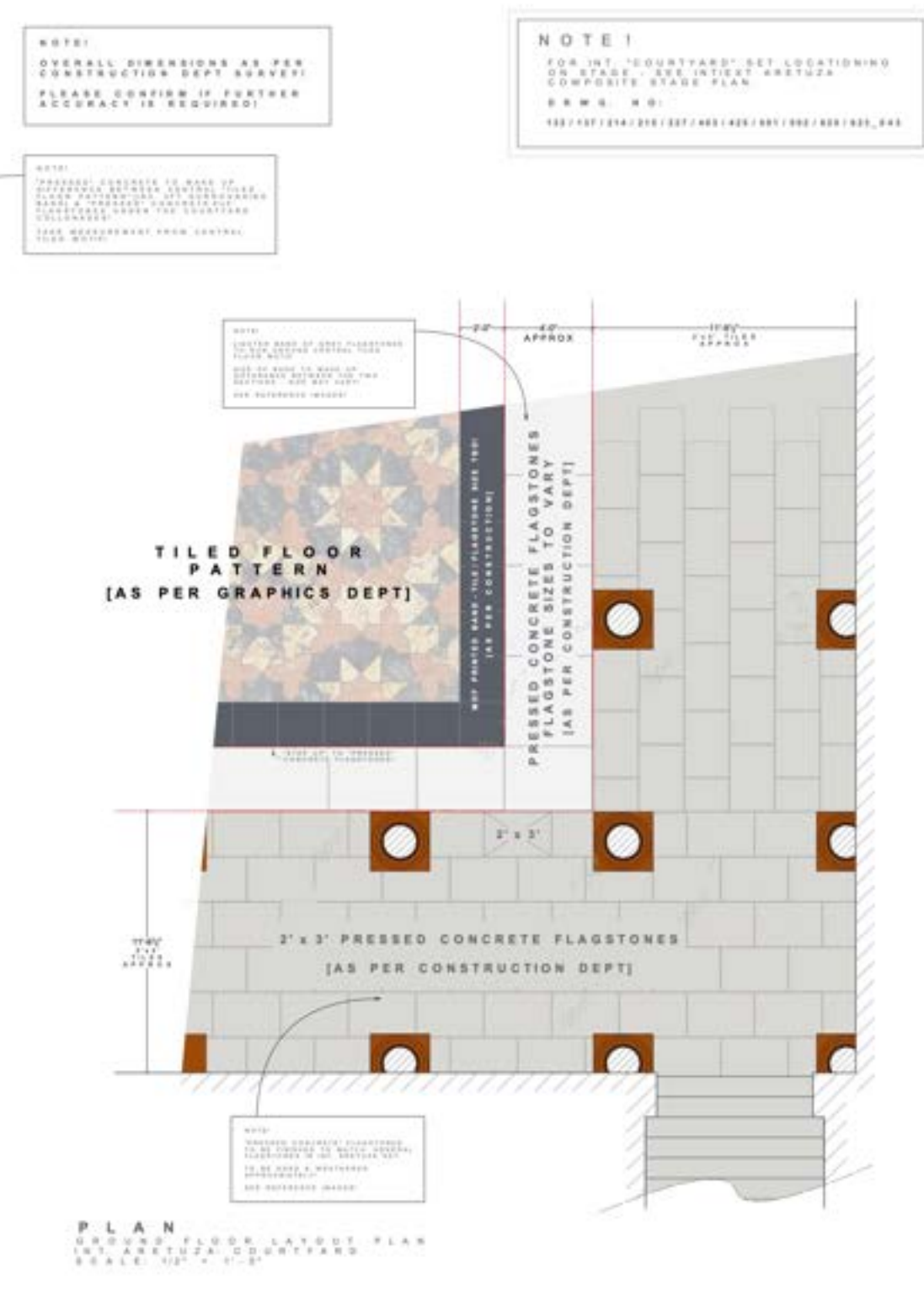
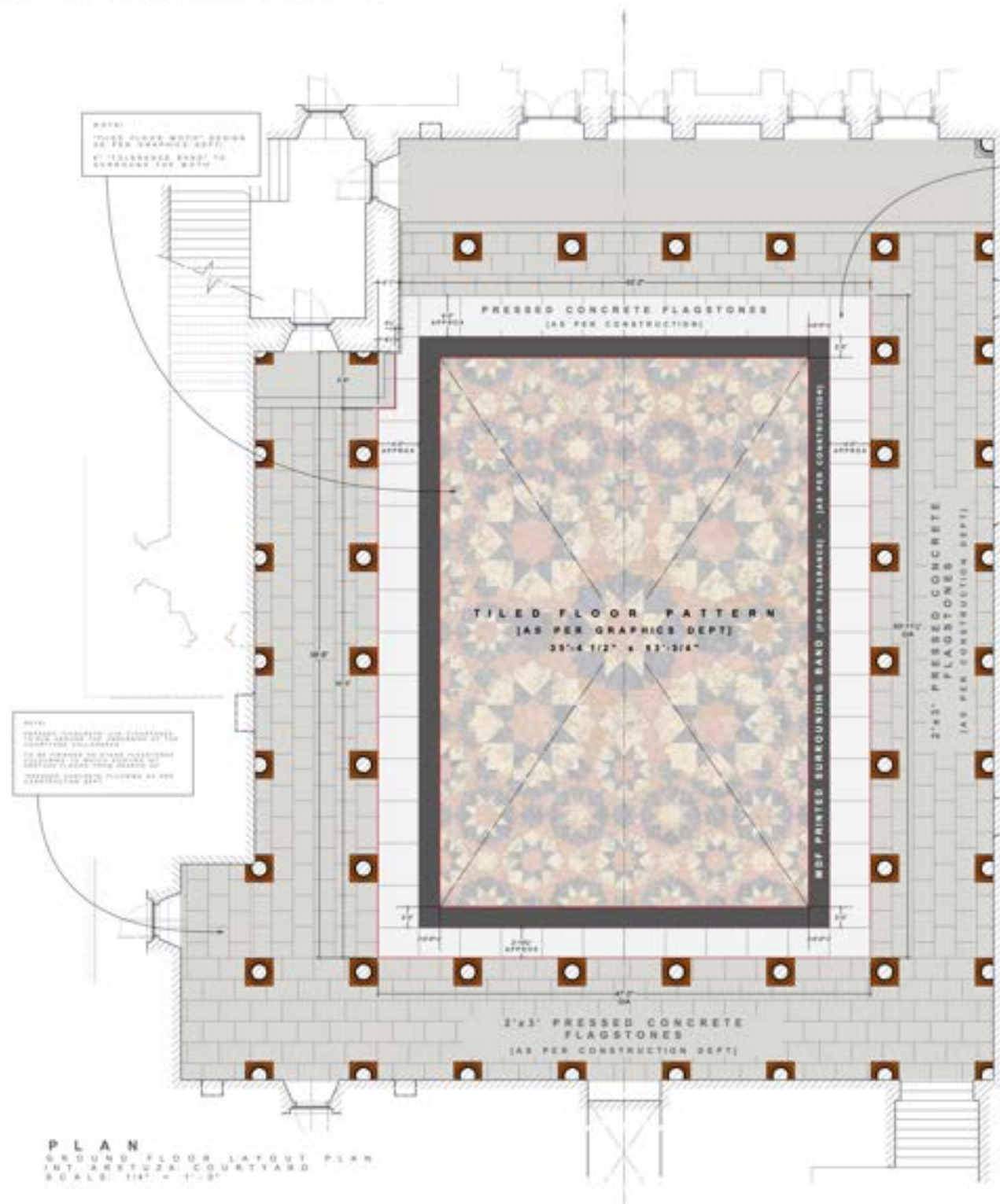


Aretuza - Courtyard - Ring of Fire

306



Aretuza - Courtyard - Ring of Fire



NOTES:

- ALL MEASUREMENTS IN INTERNAL UNLESS OTHERWISE STATED
- ALL DIMENSIONS TO FACE UNLESS OTHERWISE STATED
- FOR COURTYARD SET-OUTING ON OTHER SEE - STAGE 02, LONGCROSS STUDIOS
- FOR INTERIOR ARETUZA COURTYARD, SEE STAGE 02, LONGCROSS STUDIOS
- FOR EXTERIOR ARETUZA COURTYARD, SEE STAGE 02, LONGCROSS STUDIOS

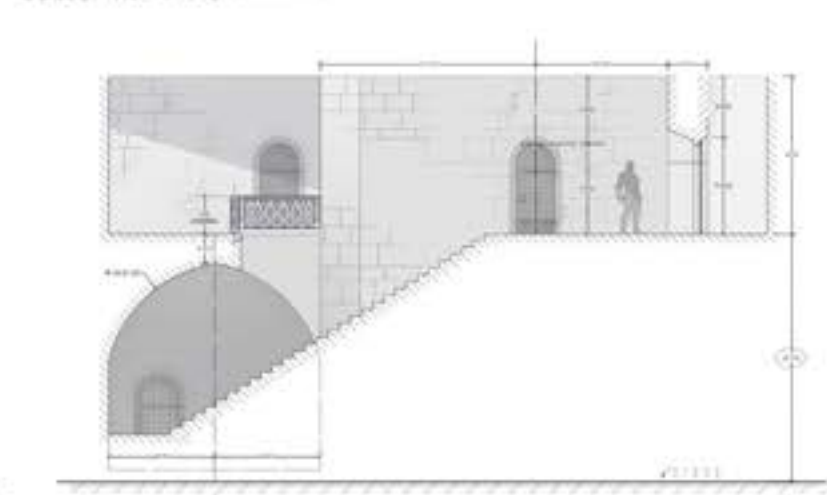
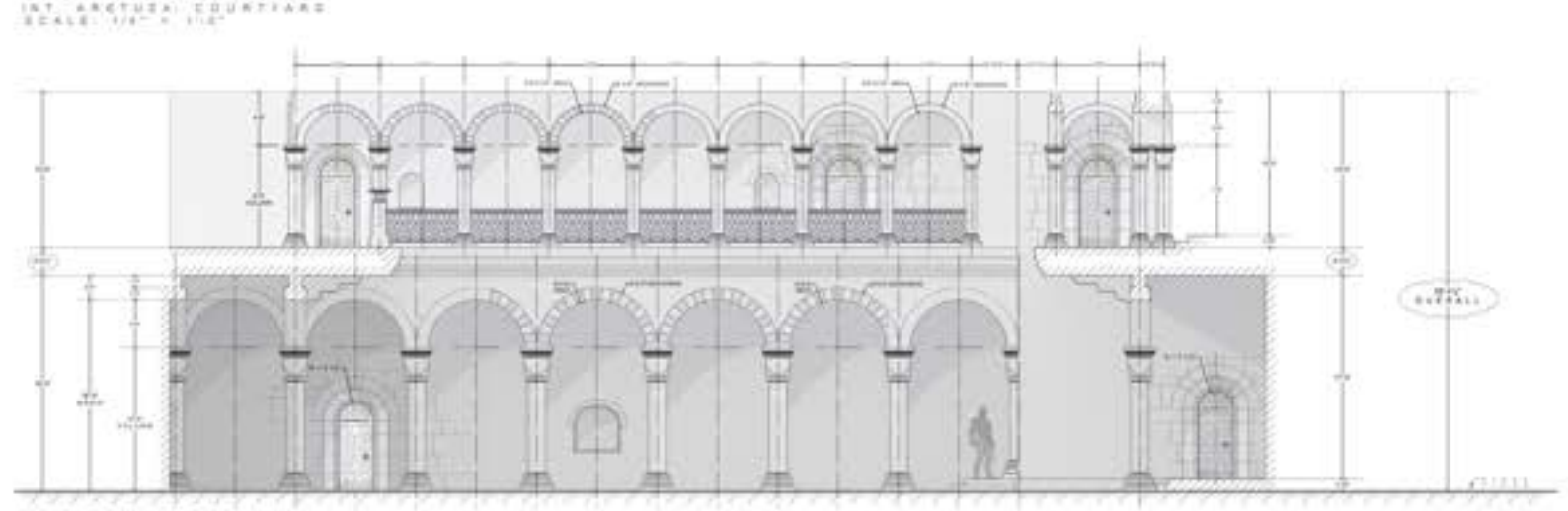
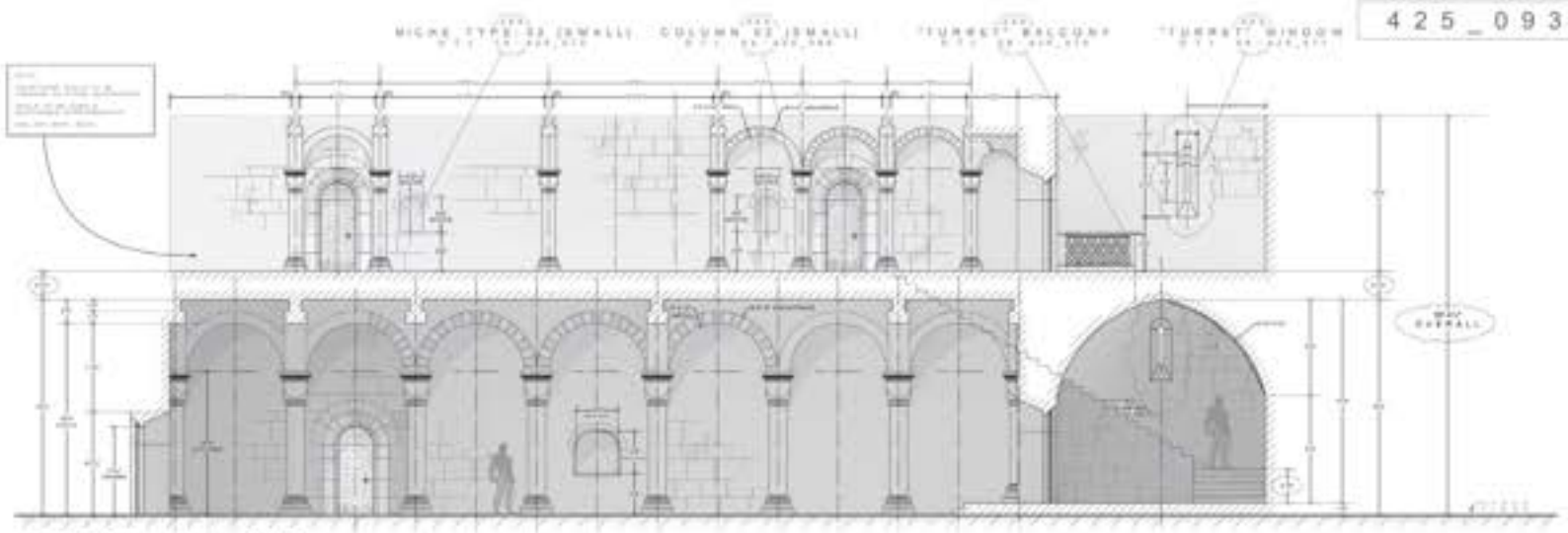
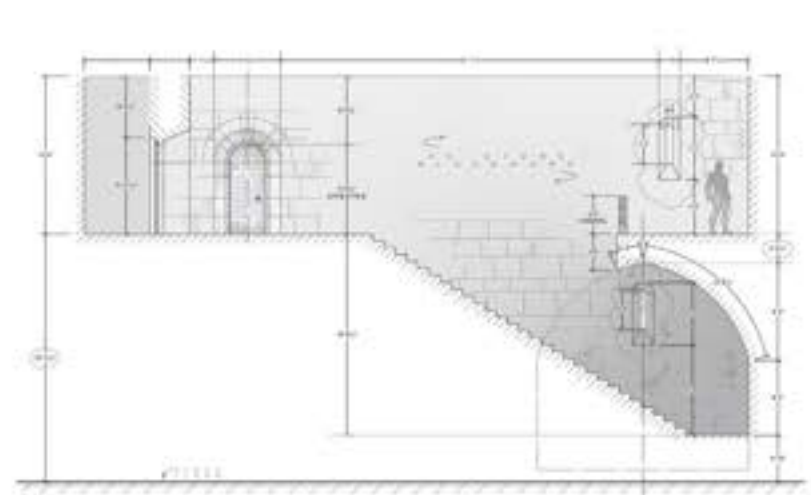
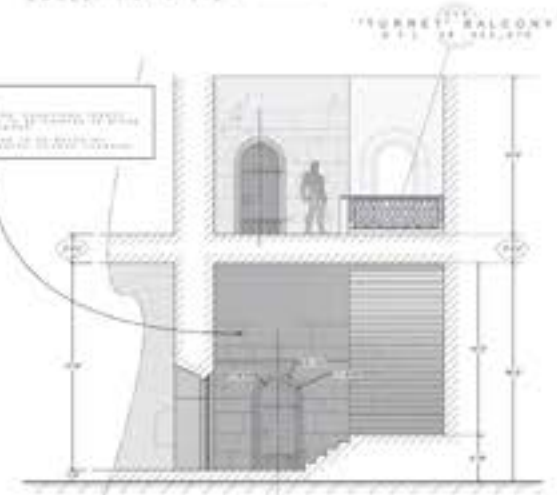
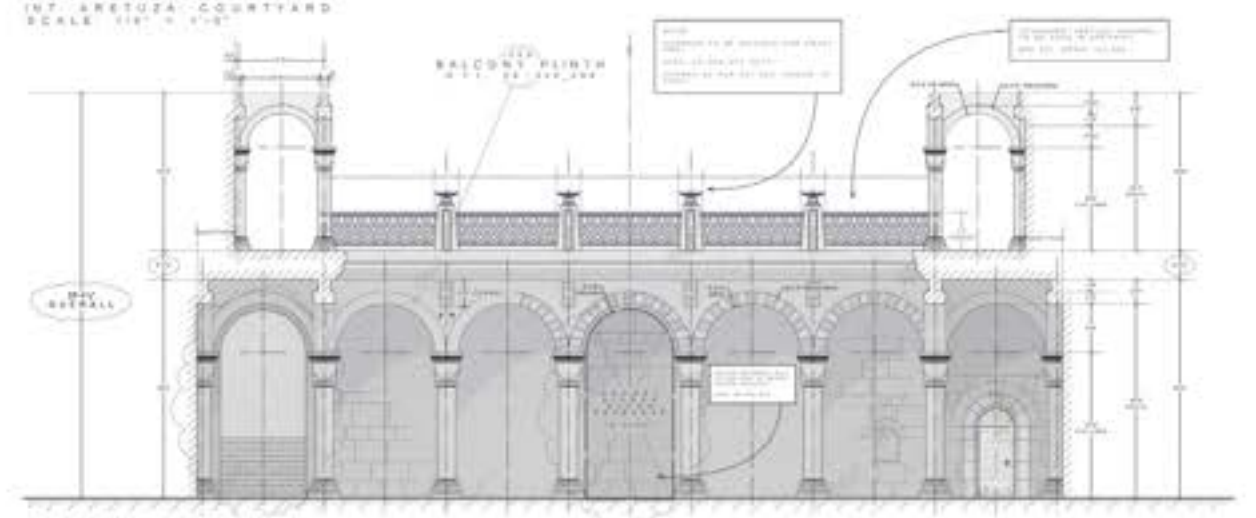
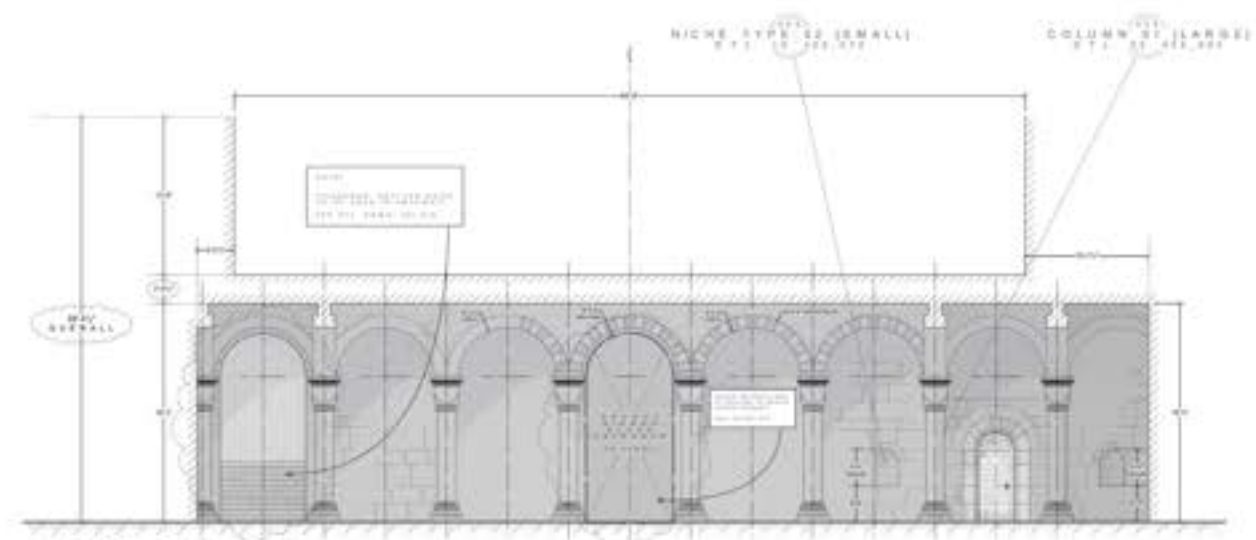
EVERYONE'S ENEMY	
INT/EXT ARETUZA COURTYARD	425
GROUND FLOOR LAYOUT PLAN	370A
STAGE 01, LONGCROSS STUDIOS	1/2" = 1'-0"
DATE	1/2024
BY	LONGCROSS STUDIOS
FOR	EVERYONE'S ENEMY

Aretuza - Grand Courtyard



구분	구분명	구분코드	구분명	구분코드
1	1. 행정안전부	10000	1. 행정안전부	10000
2	2. 국방부	20000	2. 국방부	20000
3	3. 외교부	30000	3. 외교부	30000
4	4. 법무부	40000	4. 법무부	40000
5	5. 보건복지부	50000	5. 보건복지부	50000
6	6. 교육부	60000	6. 교육부	60000
7	7. 문화체육관광부	70000	7. 문화체육관광부	70000
8	8. 산업통상자원부	80000	8. 산업통상자원부	80000
9	9. 환경부	90000	9. 환경부	90000
10	10. 농림축산식품부	100000	10. 농림축산식품부	100000
11	11. 해양수산부	110000	11. 해양수산부	110000
12	12. 중소벤처기업부	120000	12. 중소벤처기업부	120000
13	13. 과학기술정보통신부	130000	13. 과학기술정보통신부	130000
14	14. 에너지안전부	140000	14. 에너지안전부	140000
15	15. 기획재정부	150000	15. 기획재정부	150000
16	16. 통일부	160000	16. 통일부	160000
17	17. 대통령령	170000	17. 대통령령	170000
18	18. 대통령령	180000	18. 대통령령	180000
19	19. 대통령령	190000	19. 대통령령	190000
20	20. 대통령령	200000	20. 대통령령	200000
21	21. 대통령령	210000	21. 대통령령	210000
22	22. 대통령령	220000	22. 대통령령	220000
23	23. 대통령령	230000	23. 대통령령	230000
24	24. 대통령령	240000	24. 대통령령	240000
25	25. 대통령령	250000	25. 대통령령	250000
26	26. 대통령령	260000	26. 대통령령	260000
27	27. 대통령령	270000	27. 대통령령	270000
28	28. 대통령령	280000	28. 대통령령	280000
29	29. 대통령령	290000	29. 대통령령	290000
30	30. 대통령령	300000	30. 대통령령	300000
31	31. 대통령령	310000	31. 대통령령	310000
32	32. 대통령령	320000	32. 대통령령	320000
33	33. 대통령령	330000	33. 대통령령	330000
34	34. 대통령령	340000	34. 대통령령	340000
35	35. 대통령령	350000	35. 대통령령	350000
36	36. 대통령령	360000	36. 대통령령	360000
37	37. 대통령령	370000	37. 대통령령	370000
38	38. 대통령령	380000	38. 대통령령	380000
39	39. 대통령령	390000	39. 대통령령	390000
40	40. 대통령령	400000	40. 대통령령	400000
41	41. 대통령령	410000	41. 대통령령	410000
42	42. 대통령령	420000	42. 대통령령	420000
43	43. 대통령령	430000	43. 대통령령	430000
44	44. 대통령령	440000	44. 대통령령	440000
45	45. 대통령령	450000	45. 대통령령	450000
46	46. 대통령령	460000	46. 대통령령	460000
47	47. 대통령령	470000	47. 대통령령	470000
48	48. 대통령령	480000	48. 대통령령	480000
49	49. 대통령령	490000	49. 대통령령	490000
50	50. 대통령령	500000	50. 대통령령	500000
51	51. 대통령령	510000	51. 대통령령	510000
52	52. 대통령령	520000	52. 대통령령	520000
53	53. 대통령령	530000	53. 대통령령	530000
54	54. 대통령령	540000	54. 대통령령	540000
55	55. 대통령령	550000	55. 대통령령	550000
56	56. 대통령령	560000	56. 대통령령	560000
57	57. 대통령령	570000	57. 대통령령	570000
58	58. 대통령령	580000	58. 대통령령	580000
59	59. 대통령령	590000	59. 대통령령	590000
60	60. 대통령령	600000	60. 대통령령	600000
61	61. 대통령령	610000	61. 대통령령	610000
62	62. 대통령령	620000	62. 대통령령	620000
63	63. 대통령령	630000	63. 대통령령	630000
64	64. 대통령령	640000	64. 대통령령	640000
65	65. 대통령령	650000	65. 대통령령	650000
66	66. 대통령령	660000	66. 대통령령	660000
67	67. 대통령령	670000	67. 대통령령	670000
68	68. 대통령령	680000	68. 대통령령	680000
69	69. 대통령령	690000	69. 대통령령	690000
70	70. 대통령령	700000	70. 대통령령	700000
71	71. 대통령령	710000	71. 대통령령	710000
72	72. 대통령령	720000	72. 대통령령	720000
73	73. 대통령령	730000	73. 대통령령	730000
74	74. 대통령령	74000		

DRAWING NO. PI. 01: 435_048		PI. 03: 425_093	
-----------------------------	--	-----------------	--

[illegible]

NOTE:
 DWG. TO BE READ WITH EST.
 COUNTRY PLAN & ELEVATIONS
 PART 51 & PART 52
 DWG. NO. P1 01 425-566
 P1 02 425-562

EVERYONE'S ENEMY

EPISODE	AIR DATE	RATING
1. THE UNDISCOVERED COUNTRY	4/23	B
2. THE UNDISCOVERED COUNTRY	4/23	
3. THE UNDISCOVERED COUNTRY	4/23	B
4. THE UNDISCOVERED COUNTRY	4/23	
5. THE UNDISCOVERED COUNTRY	4/23	B
6. THE UNDISCOVERED COUNTRY	4/23	
7. THE UNDISCOVERED COUNTRY	4/23	B
8. THE UNDISCOVERED COUNTRY	4/23	
9. THE UNDISCOVERED COUNTRY	4/23	B
10. THE UNDISCOVERED COUNTRY	4/23	
11. THE UNDISCOVERED COUNTRY	4/23	B
12. THE UNDISCOVERED COUNTRY	4/23	
13. THE UNDISCOVERED COUNTRY	4/23	B



Courtyard to Catacombs
306



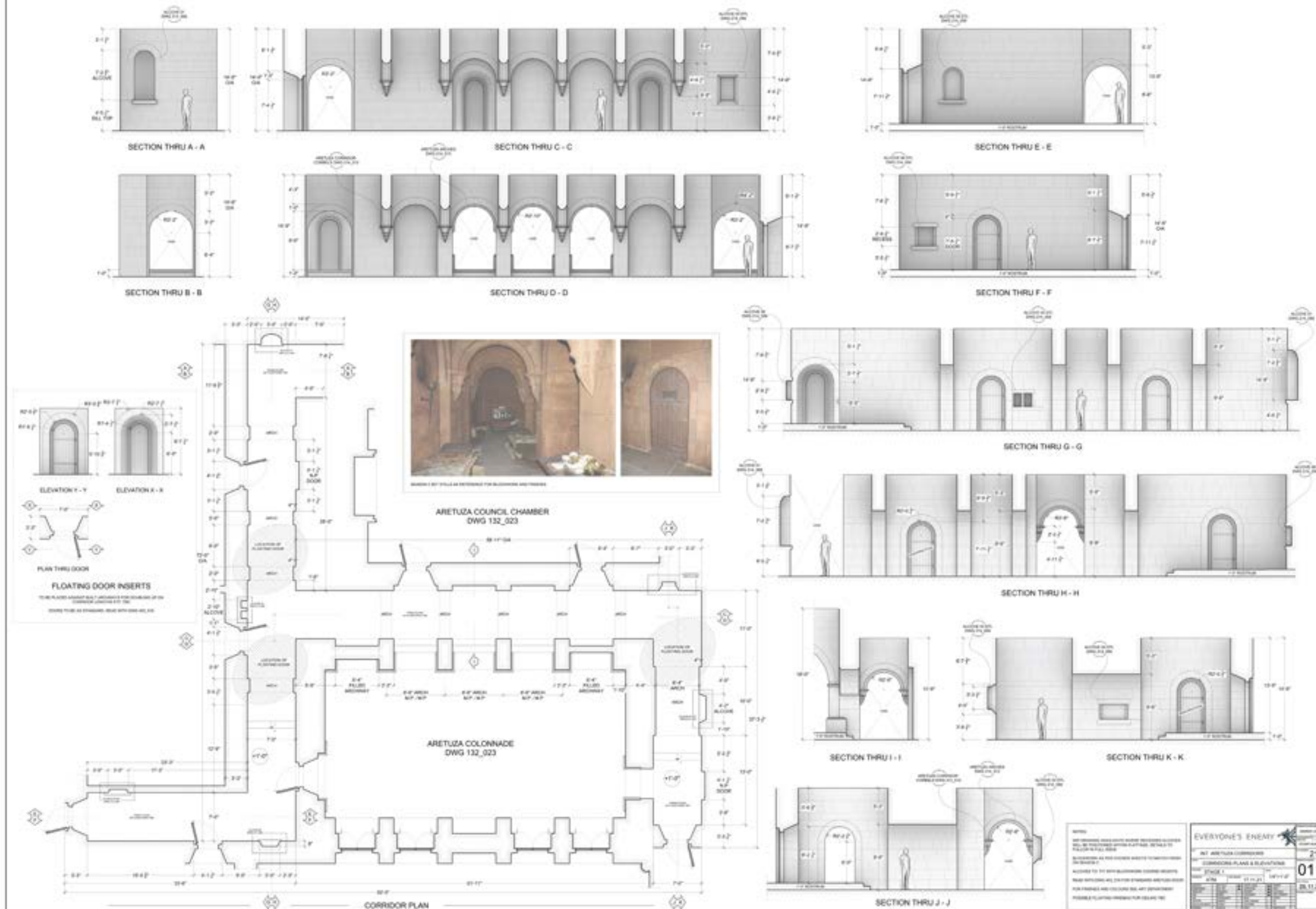
Courtyard to Catacombs

306



Courtyard to Catacombs
306

"EVERYONE'S ENEMY" - INT. ARETUZA COMPOSITE - CORRIDOR PLANS & ELEVATIONS - LOCATION: STAGE 1 - SCALE: 1/4"=1'-0"



Aretuza - Corridor

306

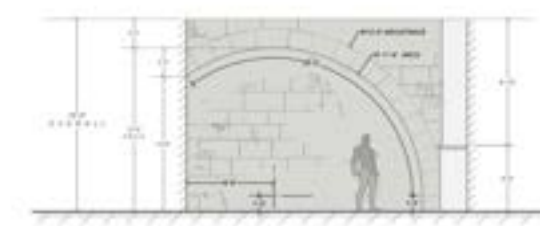


Aretuza - Library

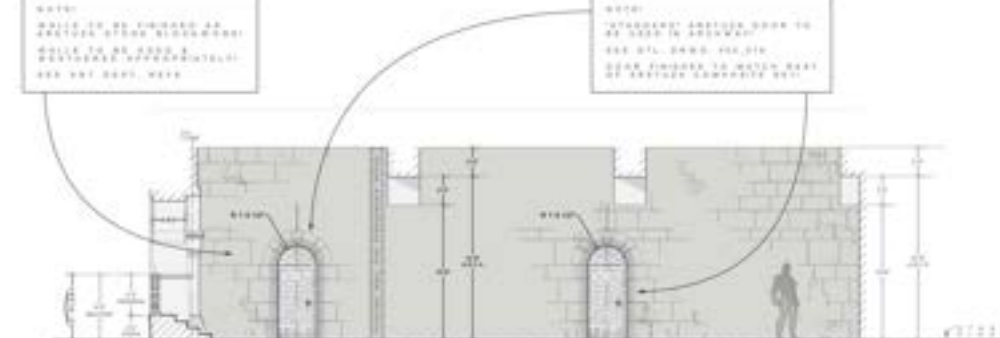


Aretuza - Library

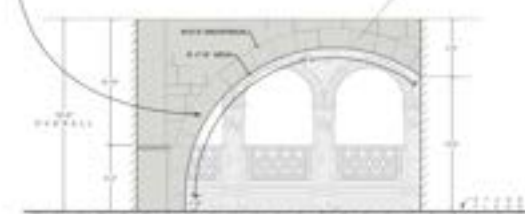
132 / 137 / 216 / 258 / 327 / 483 / 618 / 881 / 882 / 888 / 883_943



ELEVATION C-C
INT. ARCHITECTURE STUDY ROOM
SCALE: 1/4" = 1'-0"



1. 2019年12月31日，本公司应收账款账面余额为1,000,000.00元，坏账准备余额为100,000.00元，计提比例为10%。



ELEVATION E-E
INT. ARCHITECT. STUDY ROOM
SCALE: 1/4" = 1'-0"

-07%, 91	-1.68E-08	99.99999999	0.00, 0.00
-07%, 92	-8.85E-08	99.99999999	0.00, 0.00

SECTION PLAN
INT. AESTHETIC STUDY ROOM
SCALE: 1/4" = 1'-0"



EVERYONE'S ENEMY

BY ANDREW AND ELIZABETH C. YOUNG

PLAN B

ANDREW AND ELIZABETH C. YOUNG



Aretuza - Study Room

306



Aretuza - Study Room



Aretuza - Study Room

NOTES:

INT. ARETUZA STUDY ROOM TO BE
 REIMAGED INTO INT. STREGGARD'S OFFICE!
 WALL TO BE FLOORED INTO SET TO BLANK
 BUT ARCHWAY! FINAL LOCATION TBD!
 FOR INT. ARETUZA STREGGARD'S OFFICE -
 SEE P&E DRWG. 502_245



ELEVATION A-A
 INT. ARETUZA STUDY ROOM
 SCALE: 1/4" = 1'-0"

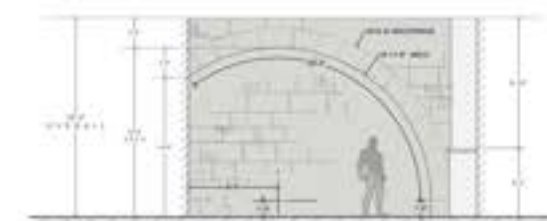
NOTE:
 WALLS TO BE FINISHED AS
 MATCHING STONE BLOCKWORK!
 WALLS TO BE 22\"/>

NOTE:
 WALLS TO BE FINISHED AS
 MATCHING STONE BLOCKWORK!
 WALLS TO BE 22\"/>

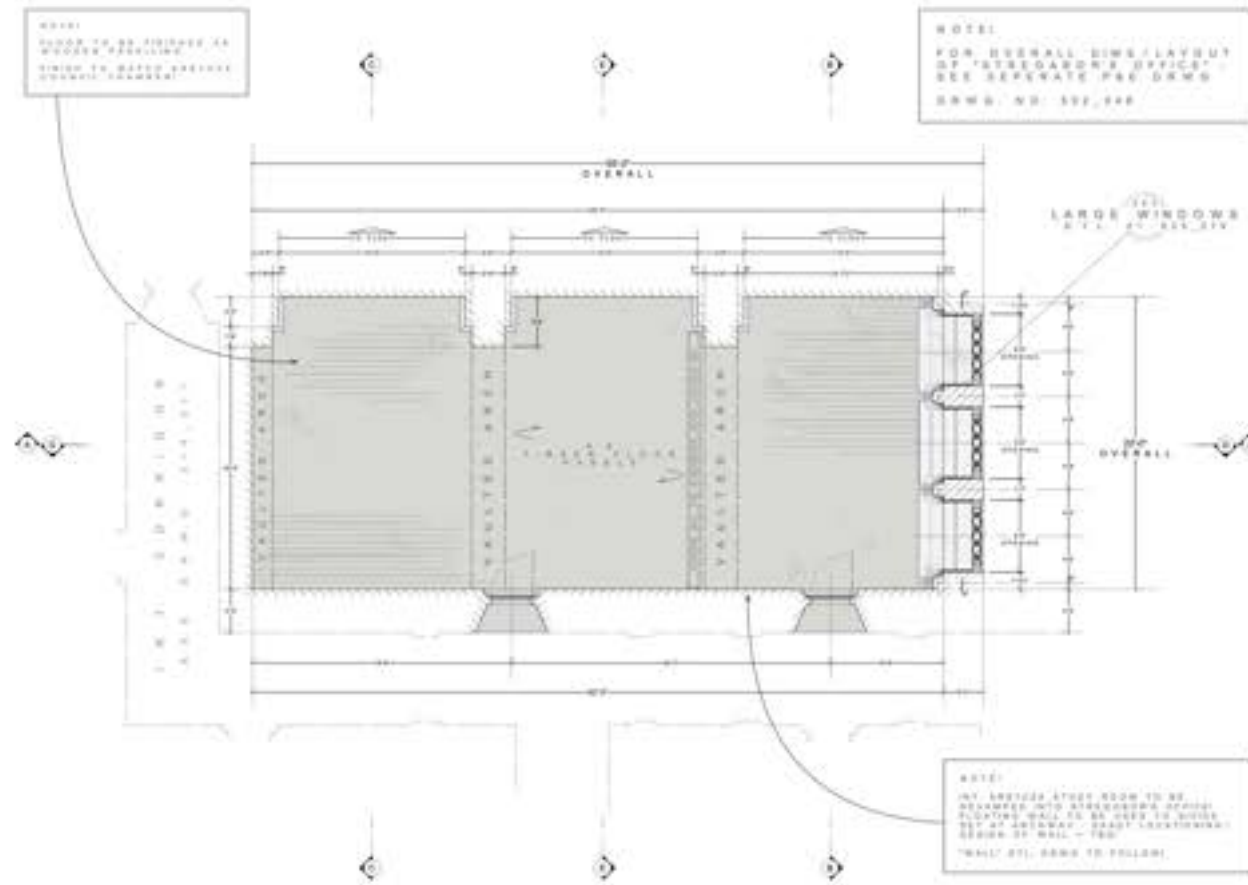
NOTE:
 WALLS TO BE FINISHED AS
 MATCHING STONE BLOCKWORK!
 WALLS TO BE 22\"/>

NOTE 1

FOR INT. "GALLERY OF GLORY" SET
 LOCATIONS ON STAGE - SEE INTERIM
 ARETUZA COMPOSITE STAGE PLAN.
 DRWG. NO:
 142 / 107 / 214 / 216 / 227 / 483 / 485 / 501 / 502 / 520 / 525_543



ELEVATION C-C
 INT. ARETUZA STUDY ROOM
 SCALE: 1/4" = 1'-0"

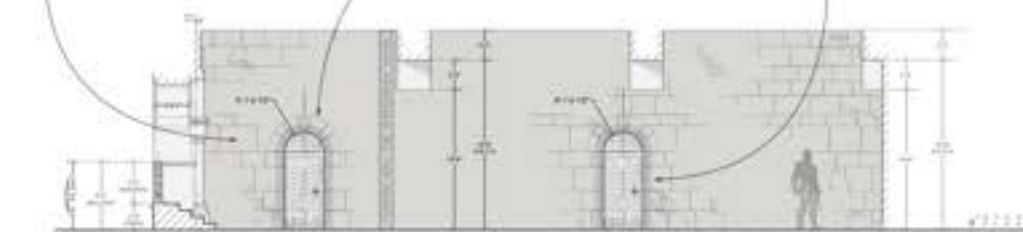


SECTION PLAN
 INT. ARETUZA STUDY ROOM
 SCALE: 1/4" = 1'-0"

NOTE:
 FOR OVERALL DIMS LAYOUT
 OF "STREGGARD'S OFFICE"
 SEE SEPARATE P&E DRWG.
 DRWG. NO. 502_245

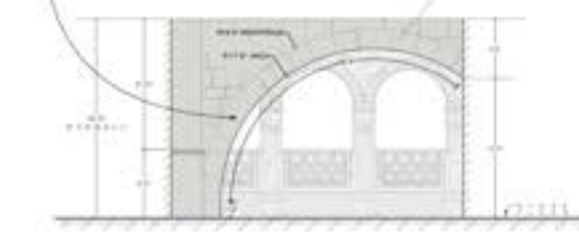
NOTE:
 WALLS TO BE FINISHED AS
 MATCHING STONE BLOCKWORK!
 WALLS TO BE 22\"/>

NOTE:
 "STREGGARD'S OFFICE" DOOR TO
 BE USED IN ARCHWAY!
 SEE P&E DRWG. 502_245
 DOOR FINISHED TO MATCH SET
 OF ARETUZA COMPOSITE SET



ELEVATION D-D
 INT. ARETUZA STUDY ROOM
 SCALE: 1/4" = 1'-0"

NOTE:
 WALLS TO BE FINISHED AS
 MATCHING STONE BLOCKWORK!
 WALLS TO BE 22\"/>



ELEVATION E-E
 INT. ARETUZA STUDY ROOM
 SCALE: 1/4" = 1'-0"

NOTES 1

ALL DIMENSIONS IN GENERAL, UNLESS OTHERWISE
 SPECIFIED!
 ALL STAIRWAYS / WALLS FINISHED TO MATCH
 SET OF ARETUZA COMPOSITE SET. SEE P&E DRWG.
 FROM PREVIOUS STAGES FOR MATERIALS!
 ALL DIMENSIONS TO FACE UNLESS OTHERWISE NOTED!
 FOR STUDY ROOM SET LOCATIONS ON STAGE SEE
 INTERIM ARETUZA COMPOSITE STAGE PLAN
 DRWG. NO. 100/100/100/100_100
 ALL LAYOUTS TO BE FINISHED AS
 STREGGARD'S OFFICE! DOOR TO BE USED IN
 ARCHWAY! DOOR FINISHED TO MATCH SET
 OF ARETUZA COMPOSITE SET!
 FOR OVERALL LAYOUT OF STREGGARD'S OFFICE! SEE
 P&E DRWG. NO. 502_245
 DOOR FINISHED TO MATCH SET OF
 ARETUZA COMPOSITE SET!
 FOR "STREGGARD'S OFFICE" DOOR LAYOUT!
 SEE P&E DRWG. 502_245
 FOR INT. ARETUZA STUDY ROOM SET!
 SEE P&E DRWG. 502_245
 SEE P&E DRWG. 502_245



EVERYONE'S ENEMY	
INT. ARETUZA STUDY ROOM	502
STAGE 01, LONGCROSS STUDIOS	502
PLAN & ELEVATIONS	502
SCALE: 1/4" = 1'-0"	502
DRWG. NO.	502
DATE	502
BY	502
CHECKED	502
APPROVED	502



Bridge to Tor Lara
306



Bridge to Tor Lara

306



Bridge to Tor Lara

306



Bridge to Tor Lara

306



Bridge to Tor Lara

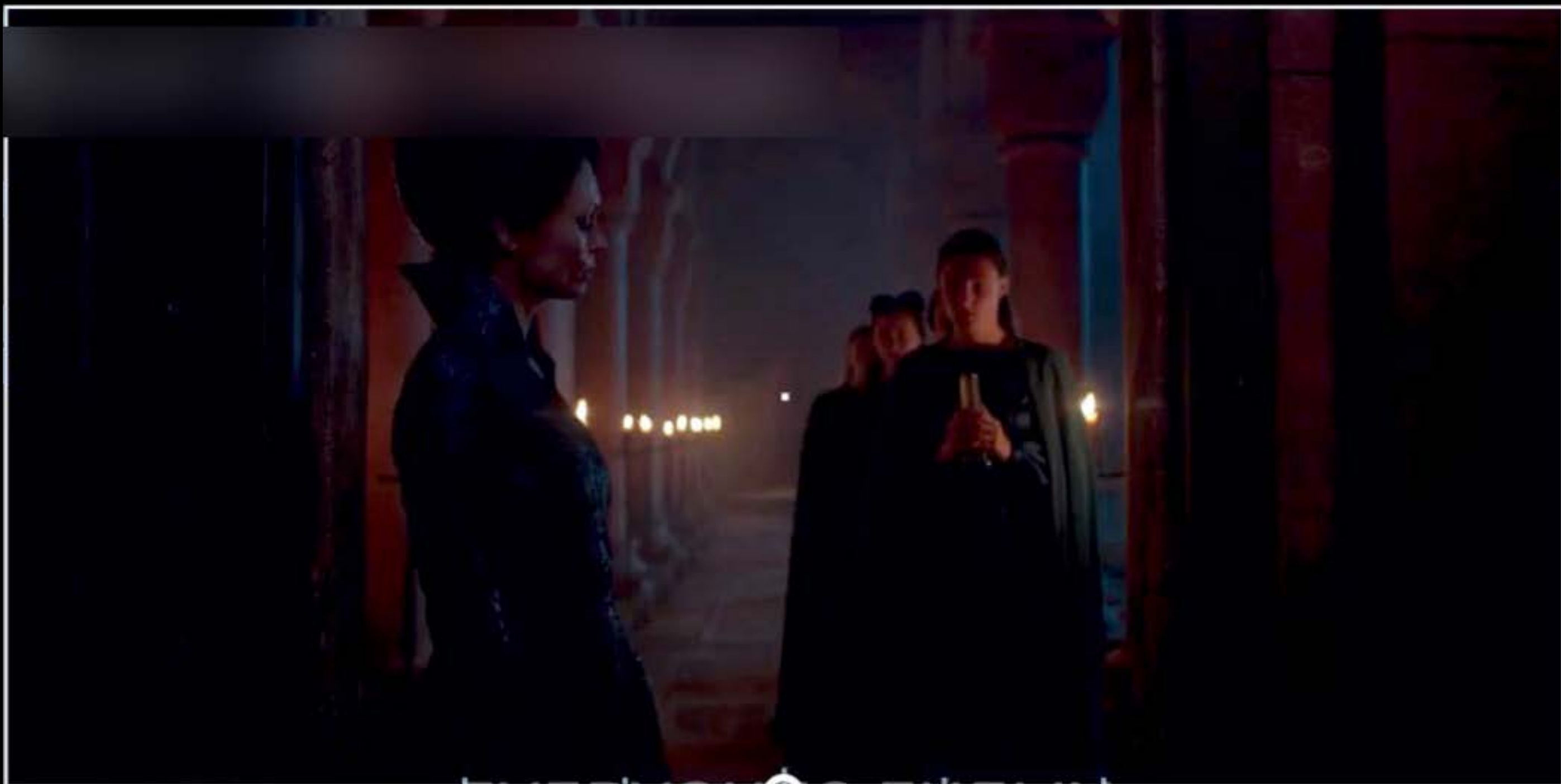


Bridge to Tor Lara



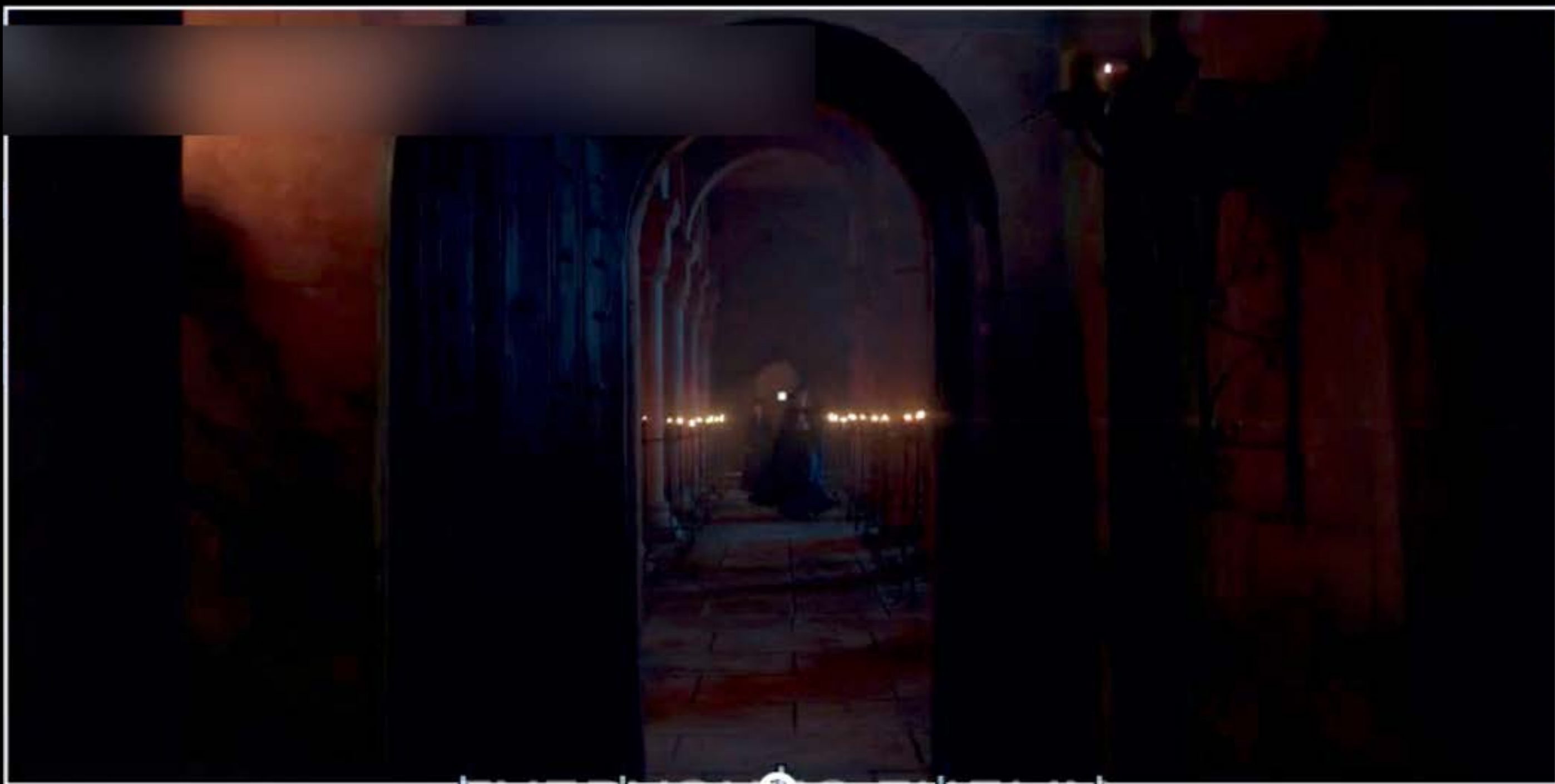
Bridge to Tor Lara

306



Bridge to Tor Lara

306



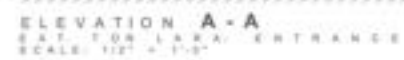
Bridge to Tor Lara

306



Bridge to Tor Lara

306



FOR SET, TOP LARA BRIDGE ENTRANCE
SET LOCATIONING ON STAGE - SEE INTENT
ARTIST'S COMPOSITE STAGE PLAN.

[illegible]

ALL RIGHTS RESERVED BY ORIGINAL OWNER. NO REPRODUCTION.

[illegible]

1. 请从下列各题中任选一题作答。(每题 10 分)

[illegible][illegible]

2025 RELEASE UNDER E.O. 14176
 ALL INFORMATION CONTAINED HEREIN IS UNCLASSIFIED

① 资料来源:《中国公路交通年鉴》,《中国公路交通年鉴》编辑部编,《中国公路交通年鉴》编辑部编,《中国公路交通年鉴》编辑部编。



EVERYONE'S ENEMY

[illegible]

100

0	0.000
---	-------



Tor Lara - Entrance



Tor Lara - Entrance

306



Aretuza - Boathouse



Aretuza - Boathouse

306



Aretuza - Boathouse

306



Aretuza - Boathouse



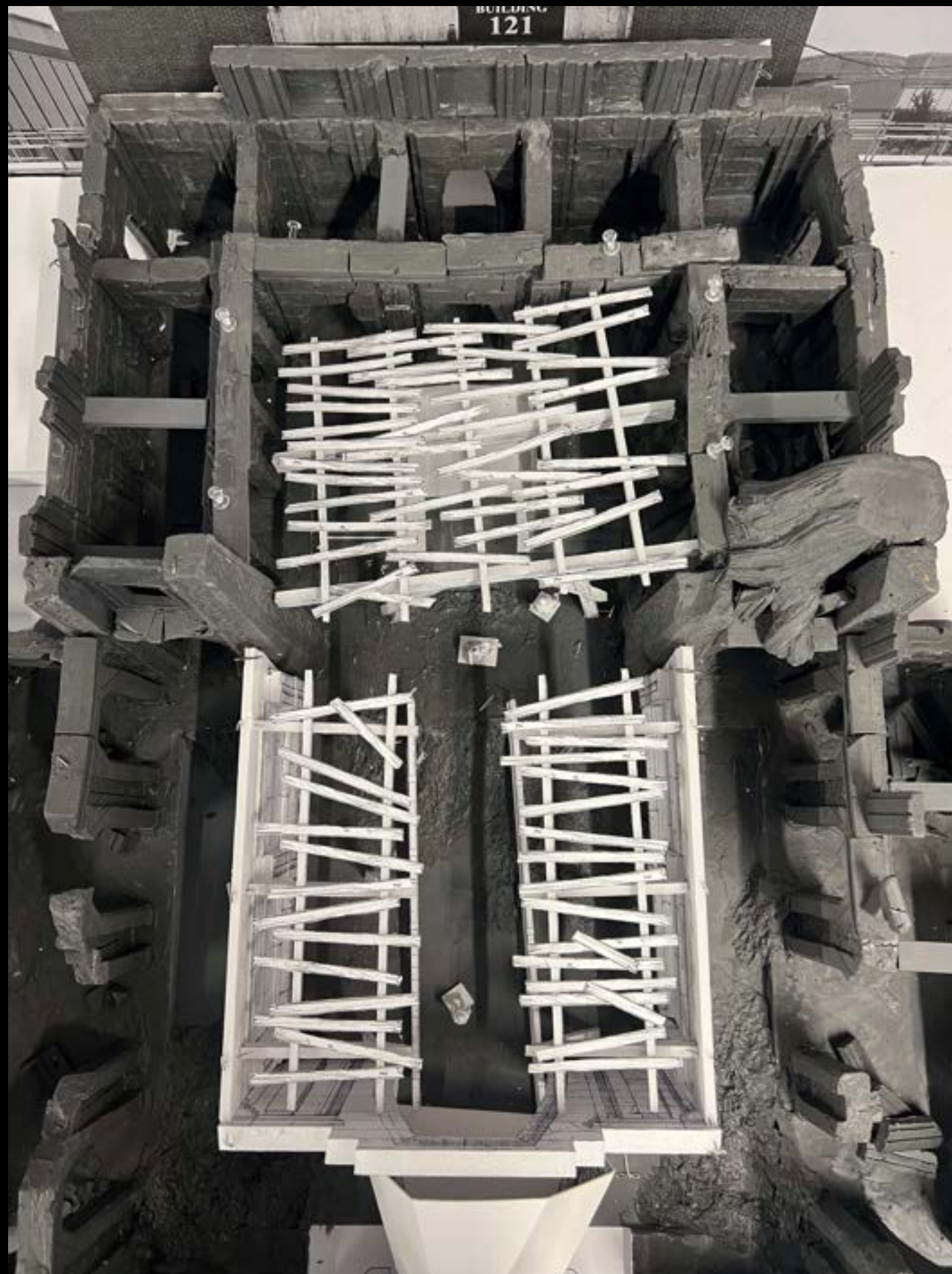
Aretuza - Boathouse



Aretuza - Boathouse



Aretuza - Boathouse



Aretuza - Boathouse



Aretuza - Boathouse



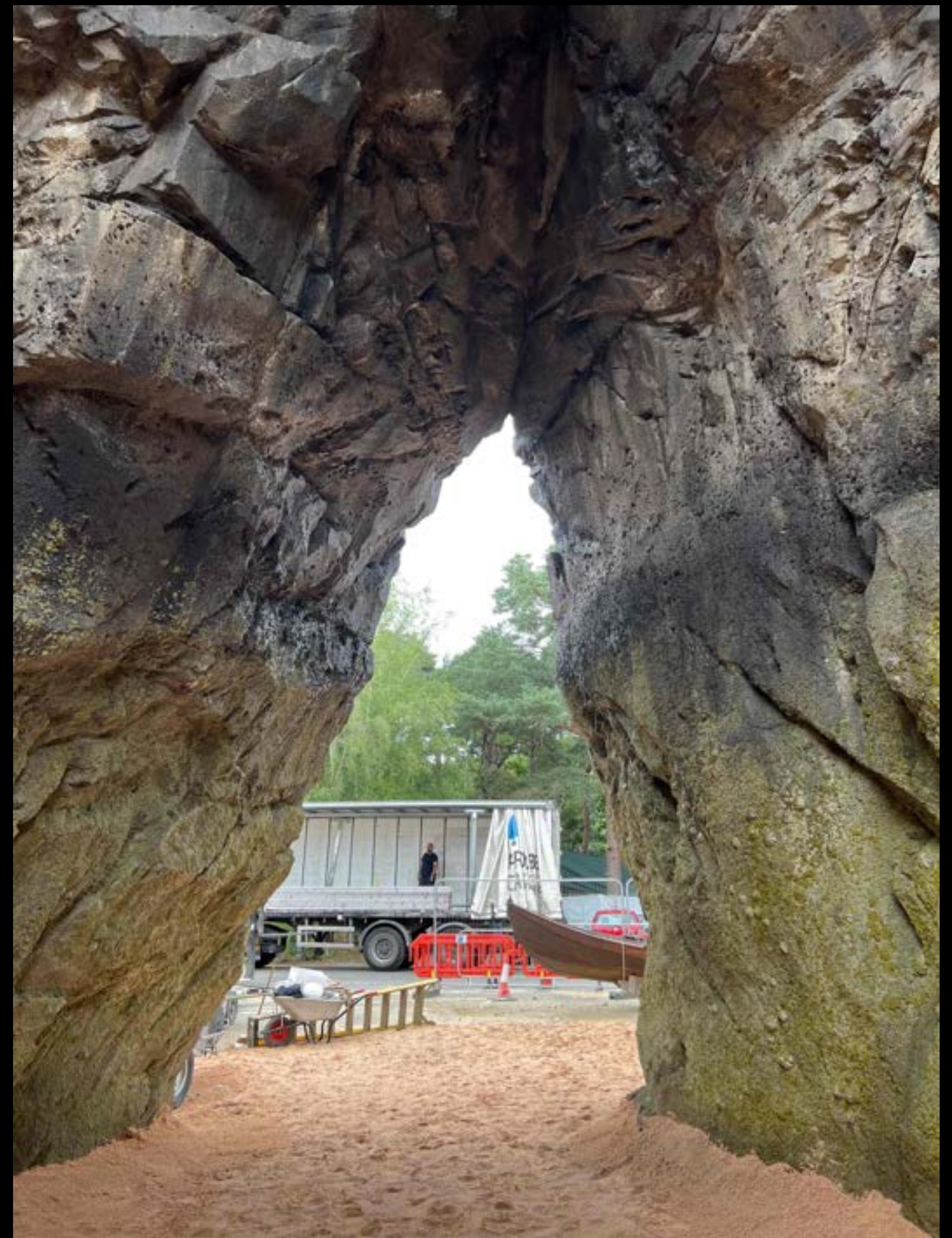
Aretuza - Boathouse



Aretuza - Boathouse



Aretuza - Boathouse



Aretuza - Boathouse



Aretuza - Boathouse

306



Aretuza - Boathouse

306



Aretuza - Boathouse



Aretuza - Boathouse

306



Aretuza - Boathouse

306

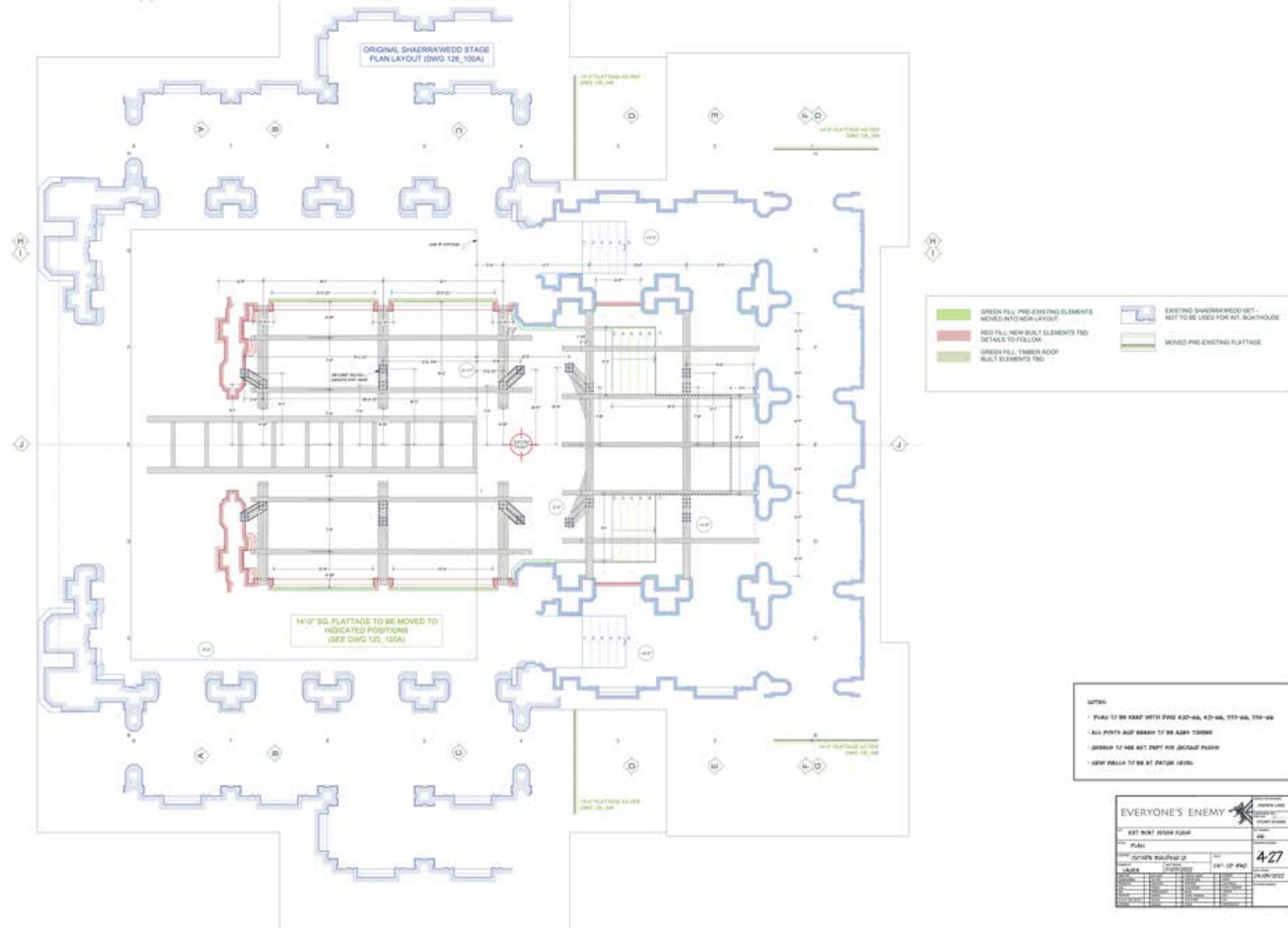


Aretuza - Boathouse

306



Aretuza - Boathouse



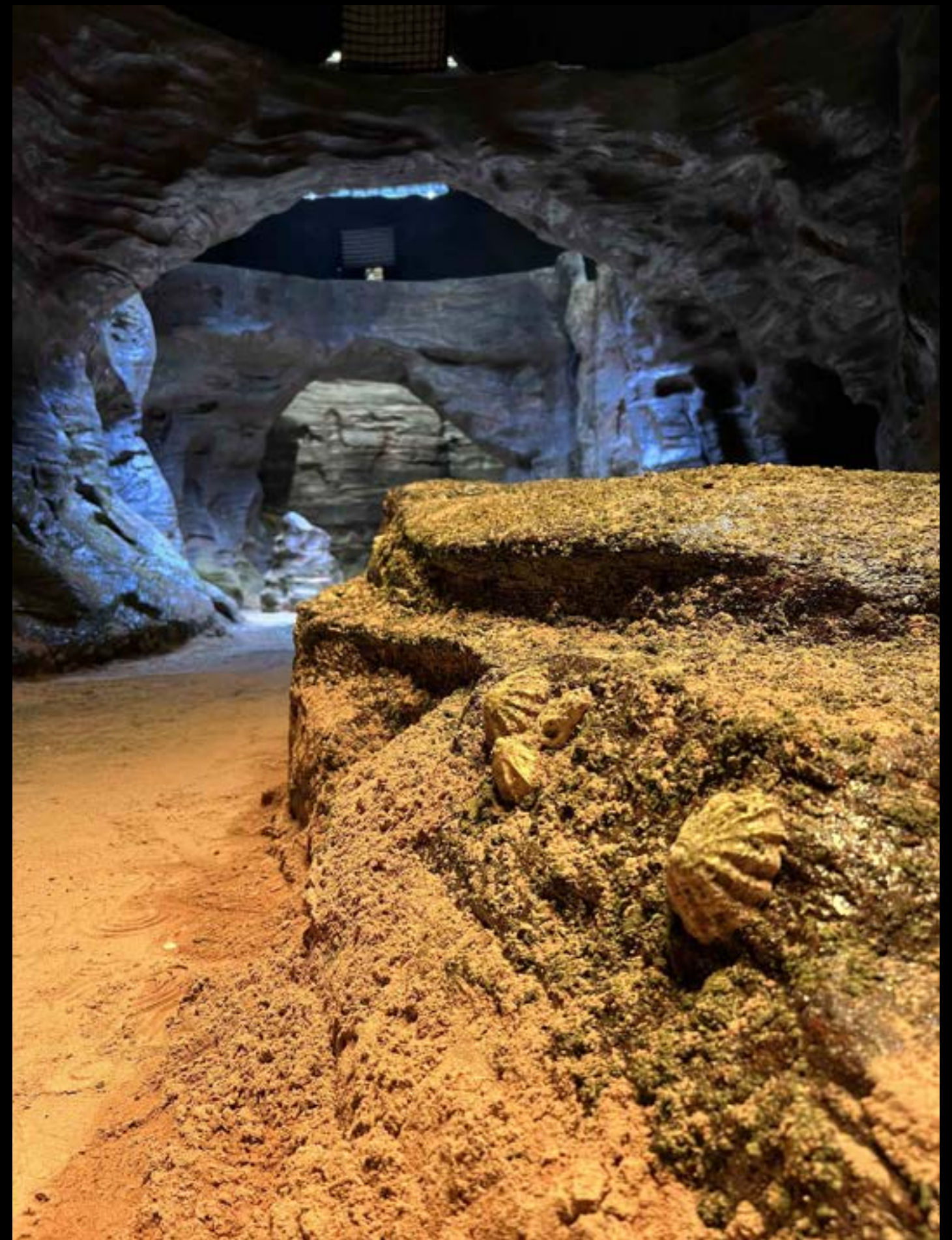
Aretuza - Boathouse



Aretuza - Tunnels



Aretuza - Tunnels



Aretuza - Tunnels

