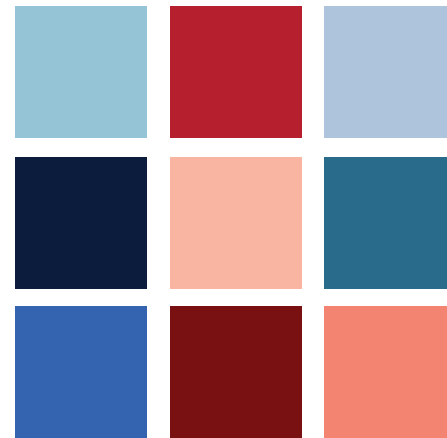
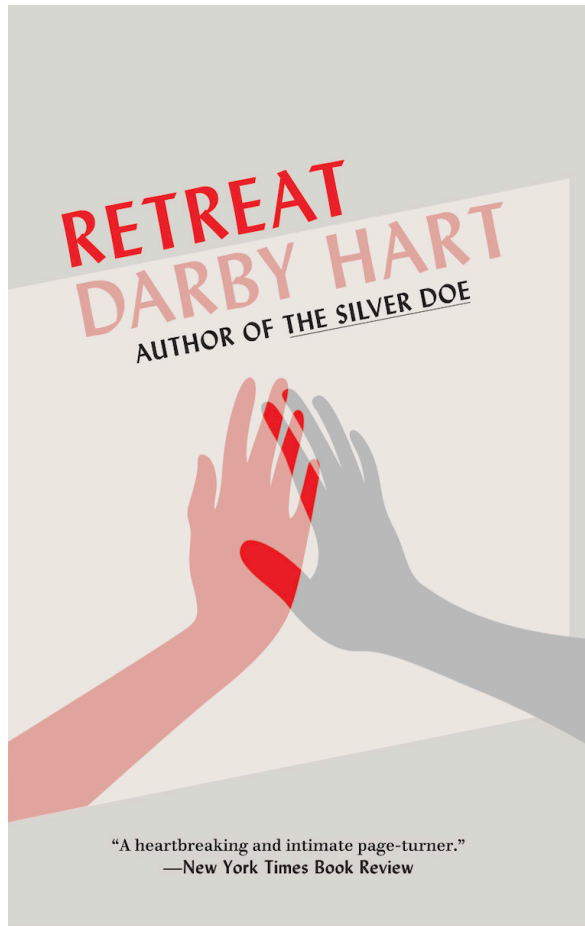


# A MURDER AT THE END OF THE WORLD



**Production Design Presentation**



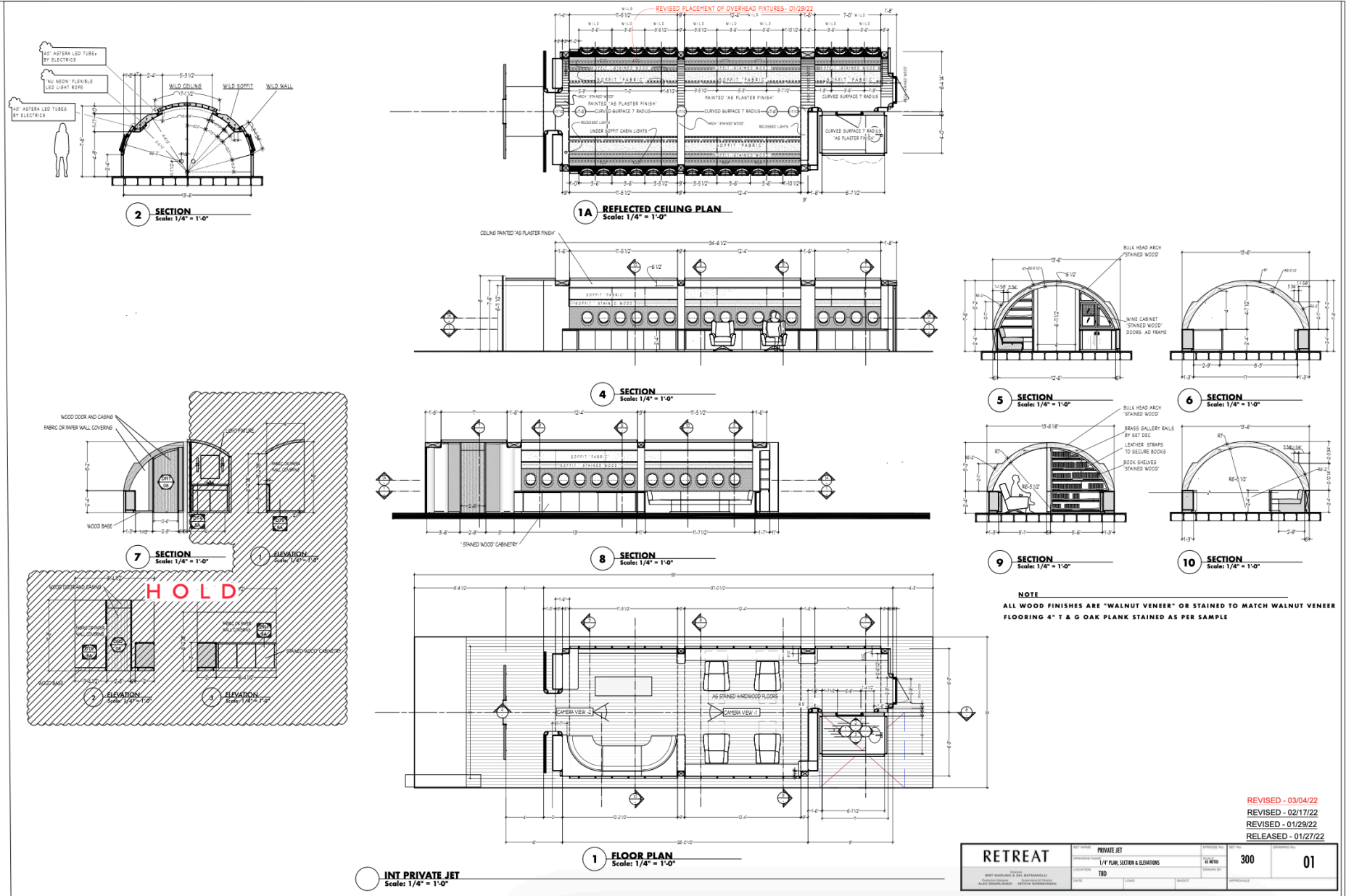




Private Jet





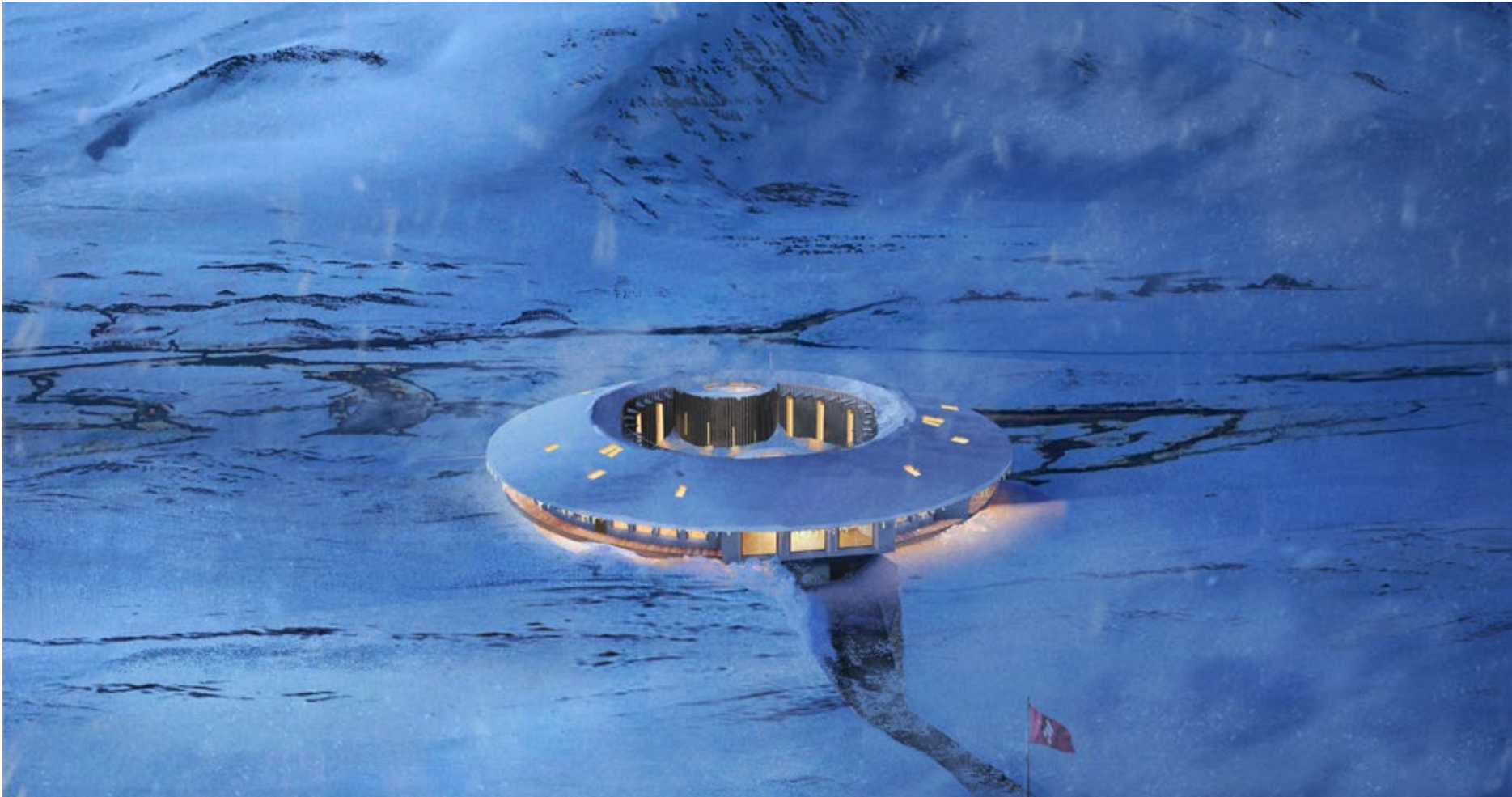




Hotel - Exterior/Concept • Set Photo











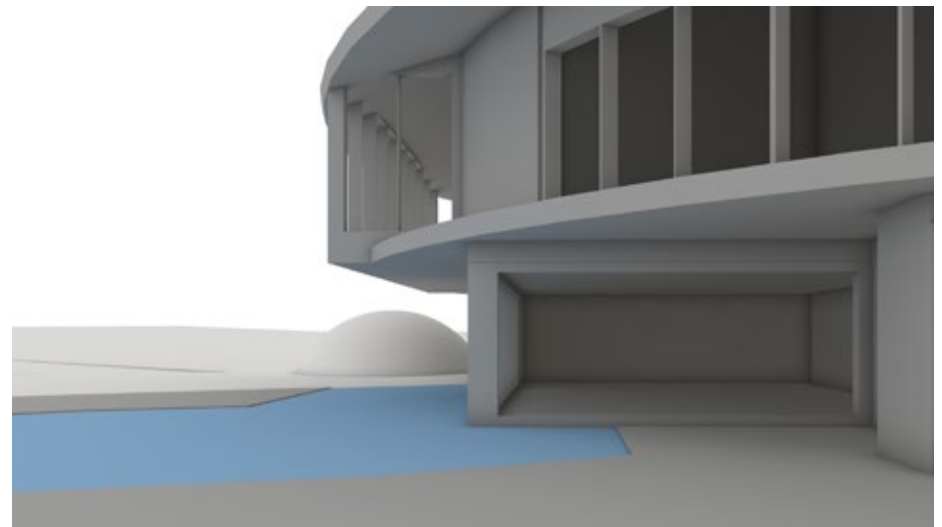
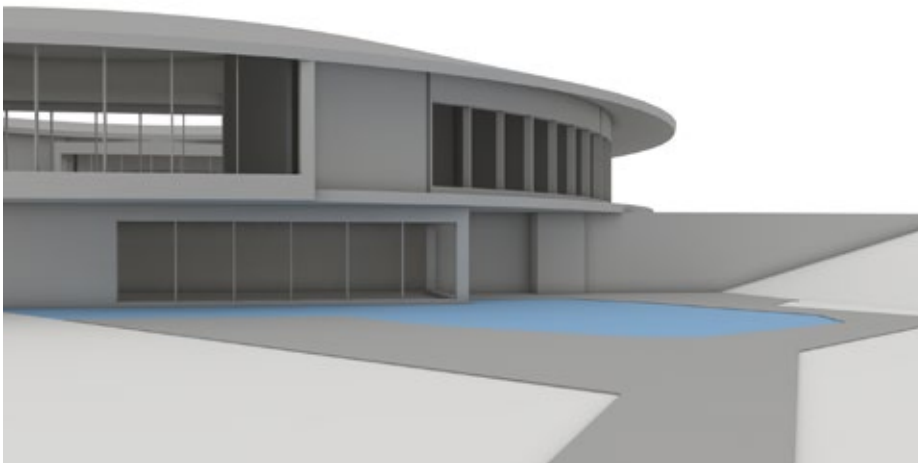
*Deplar Farm – Location Photos*



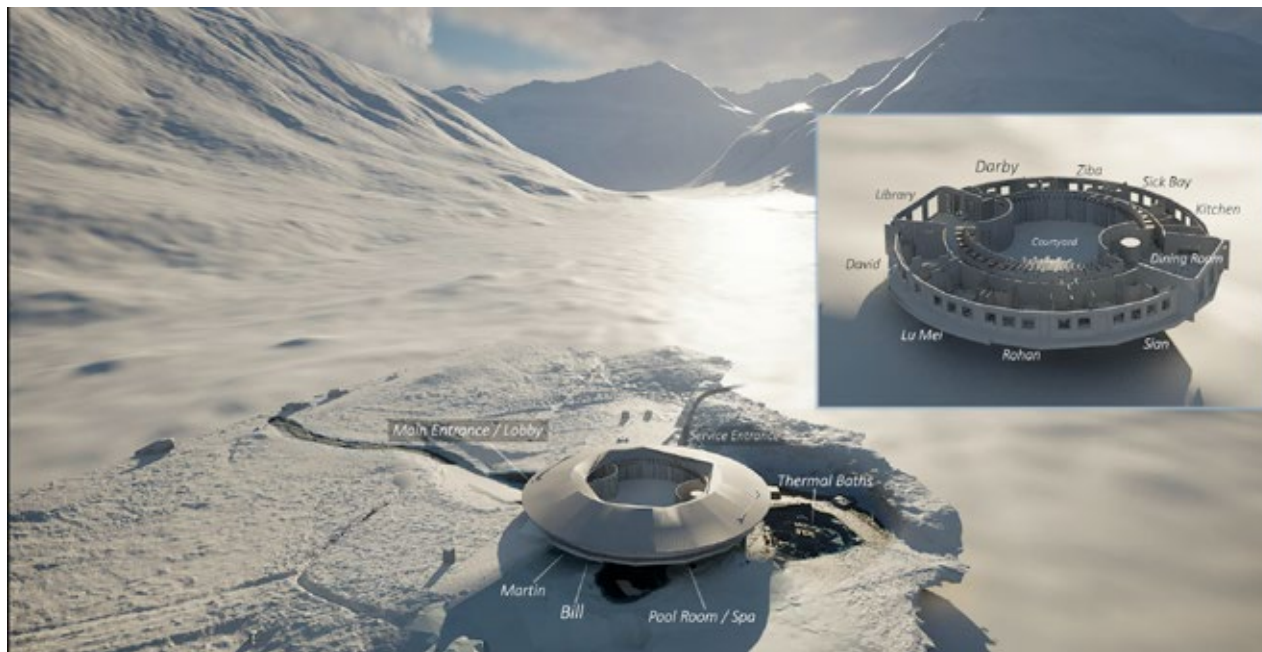
*Concept Art*



*Vök Baths – Location Photos*



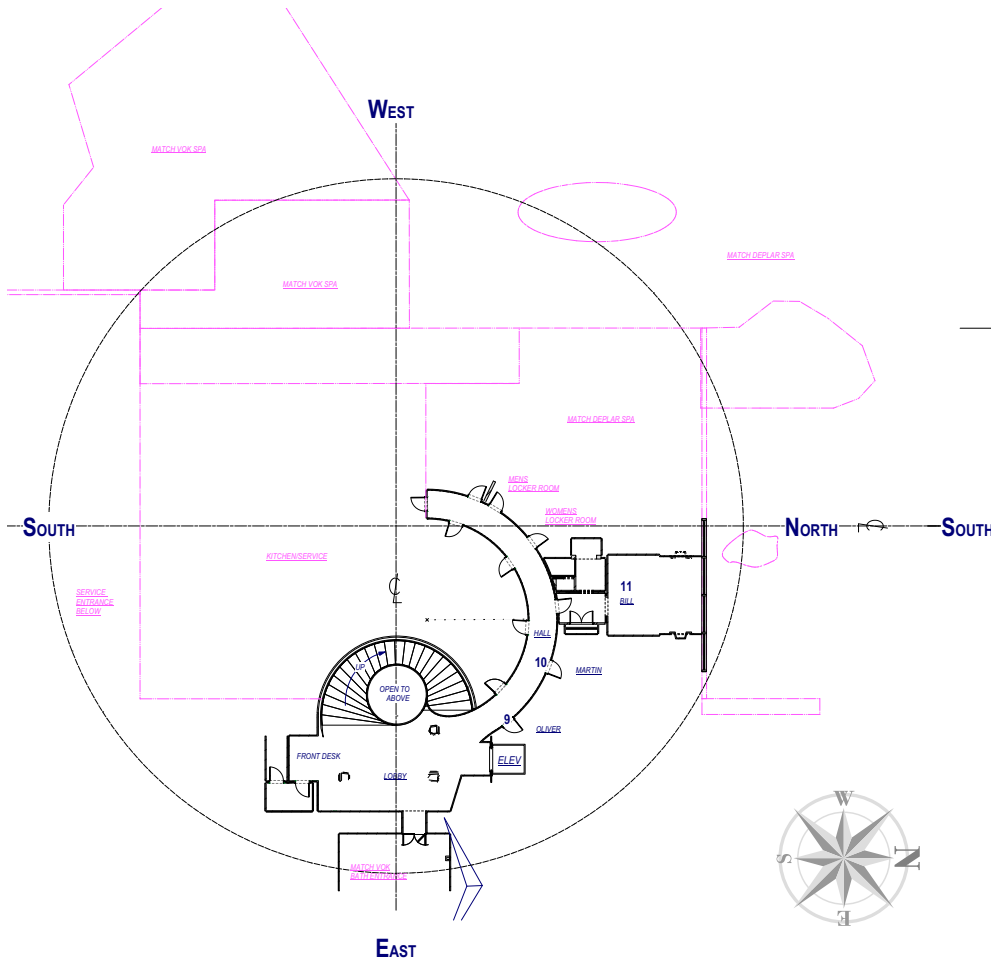
*Concept Art*



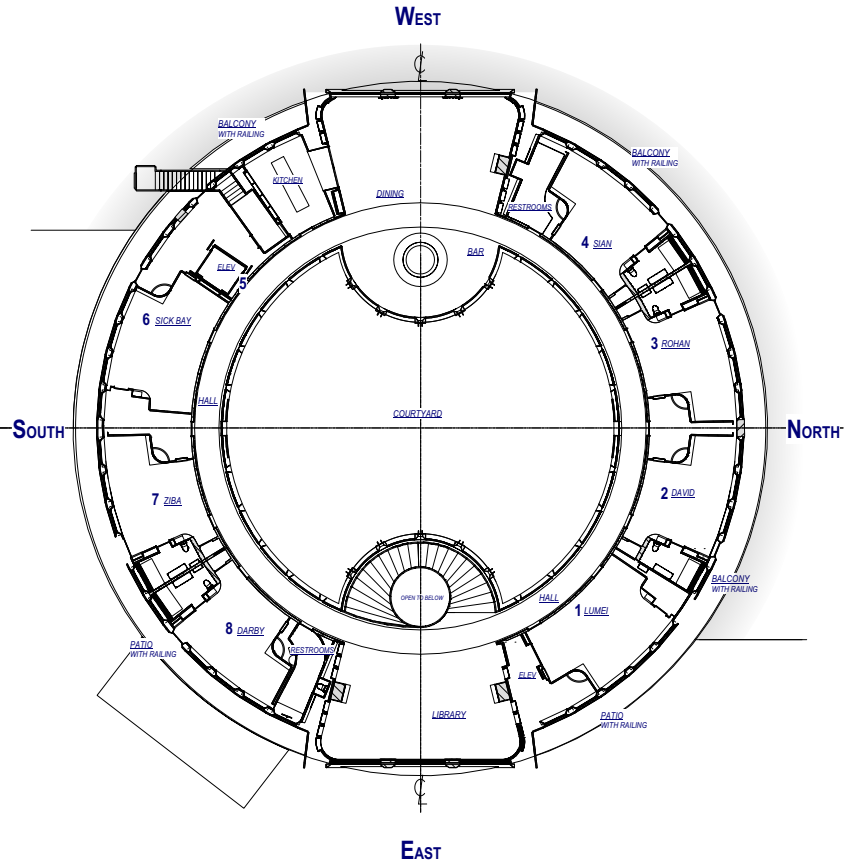
Hotel - Exterior/Concept • VFX Plate



Hotel - Exterior/Concept • VFX Plate



1 CONCEPT PLAN- LOBBY LEVEL  
3/32" = 1'-0"



2 CONCEPT PLAN- RING LEVEL  
3/32" = 1'-0"

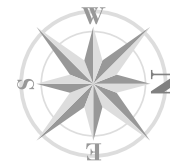
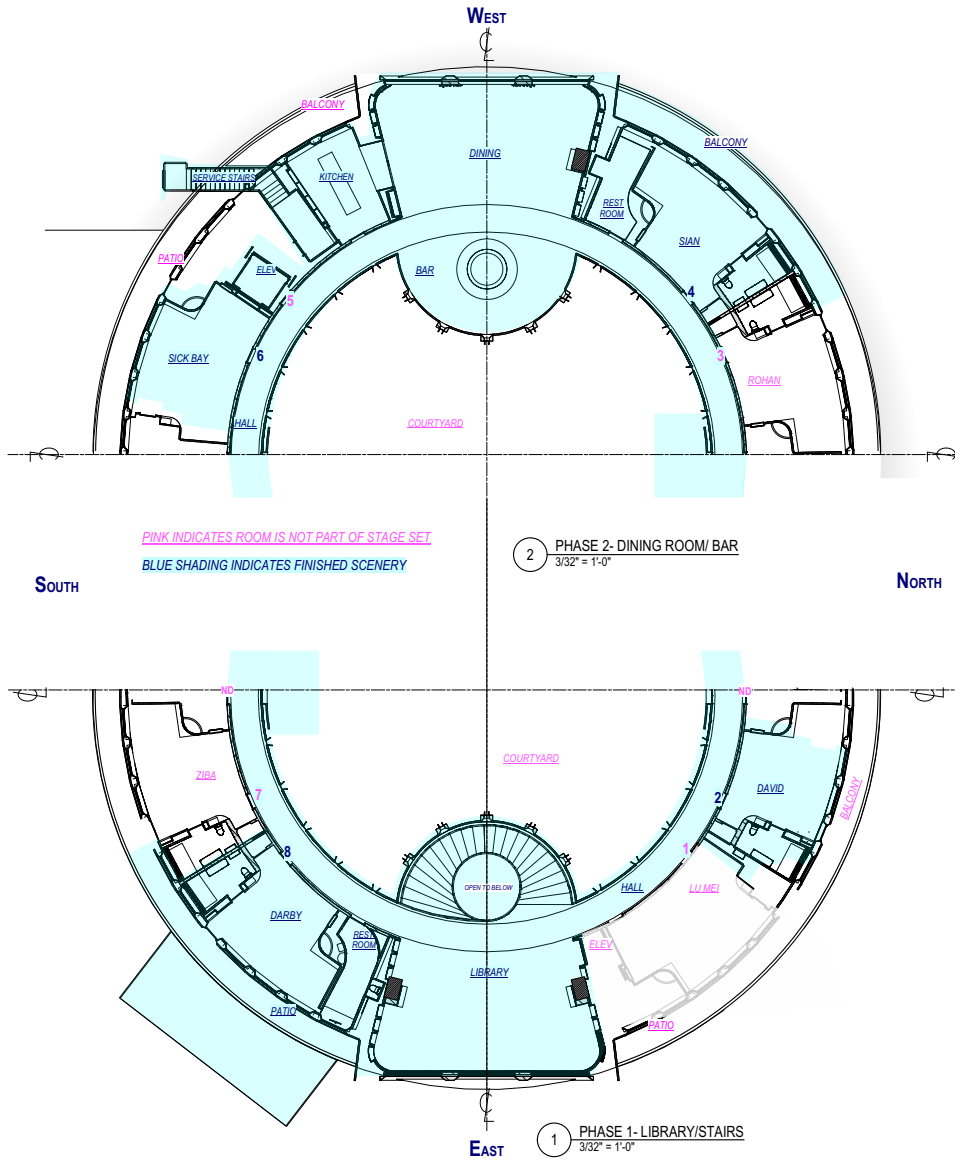
RELEASED  
03/31/22

RELEASED  
12/16/21

REVISIONS:  
△ 03/31/22- UPDATE ROOM ASSIGNMENTS

<b>RETREAT</b>	INT HOTEL - CONCEPTUAL	DATE: 12/16/21	SCALE: 3/32" = 1'-0"	PROJECT NO: 200-228	REV: C1
	CONCEPT PLANS	DATE: 12/16/21	SCALE: AS NOTED	PROJECT NO: 200-228	REV: C1
	STAGE 3	DATE: 12/16/21	SCALE: AS NOTED	PROJECT NO: 200-228	REV: C1





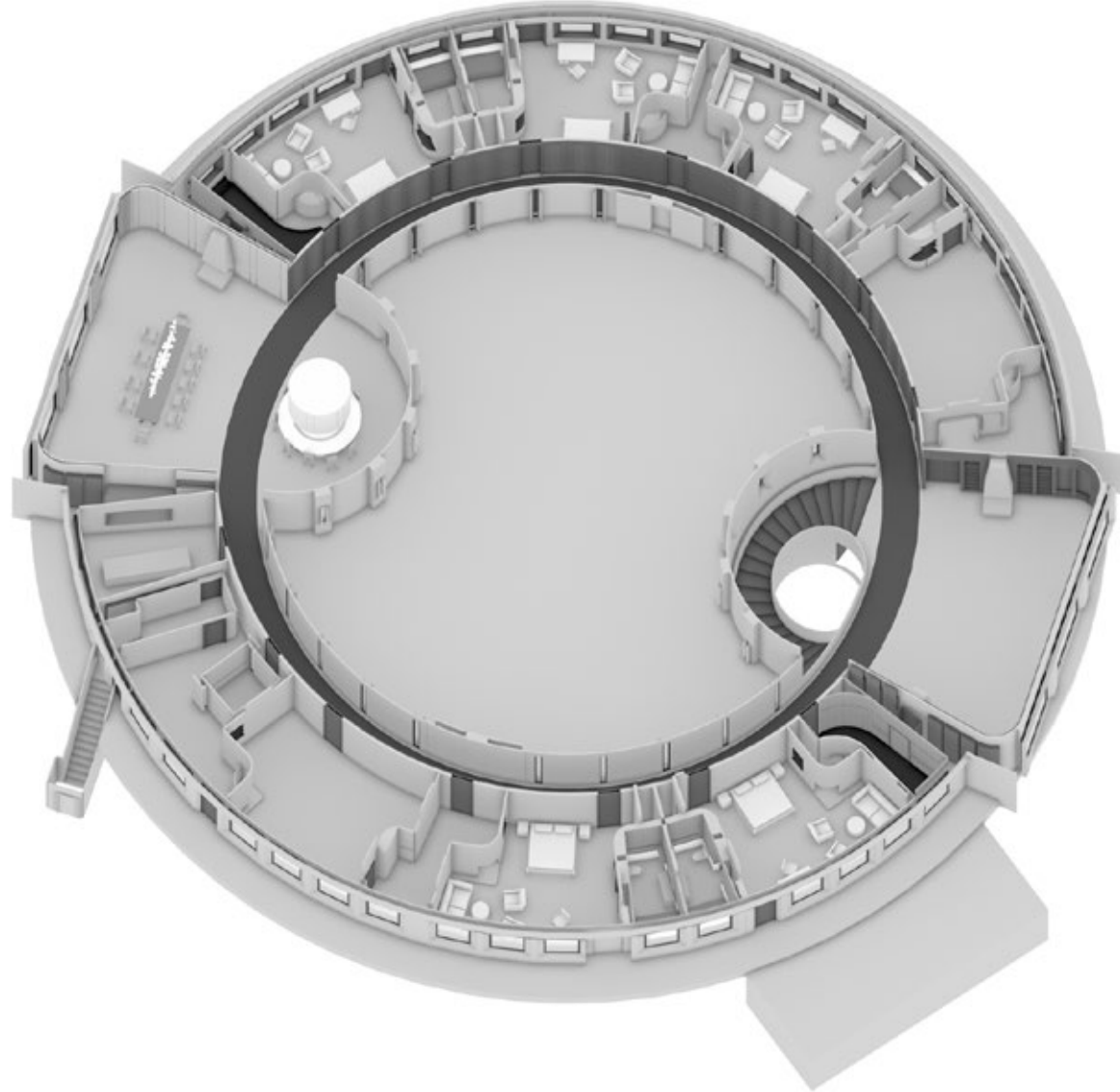
RELEASED  
06/06/22

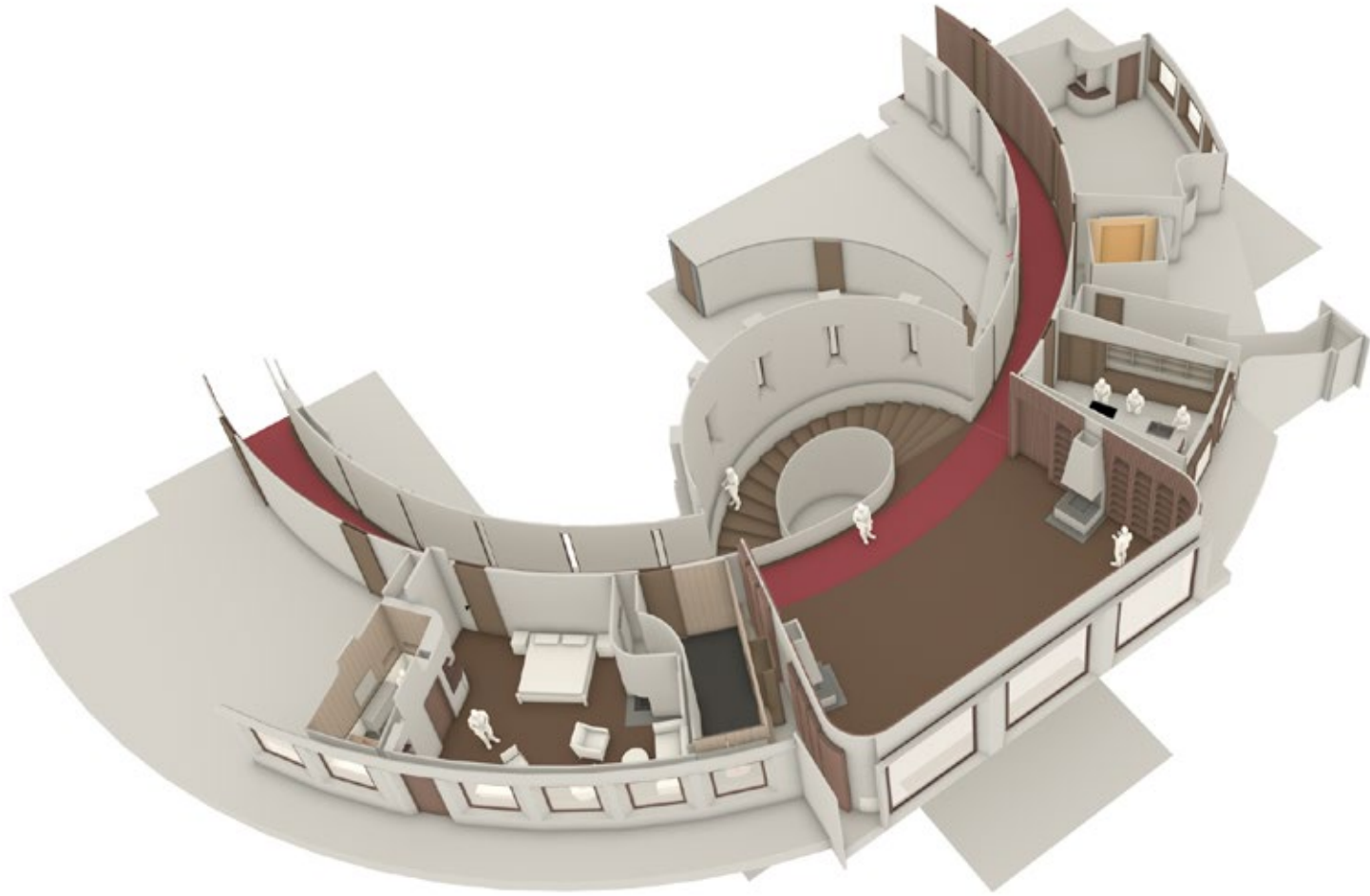
REVISED  
02/22/22

RELEASED  
12/16/21

**REVISIONS:**  
 ▲ 02/22/22- UPDATE ROOM NUMBERS AND "BUILT" HIGHLIGHTING, CUT PHASES 3/4  
 ▲ 06/06/22- UPDATE NAMES

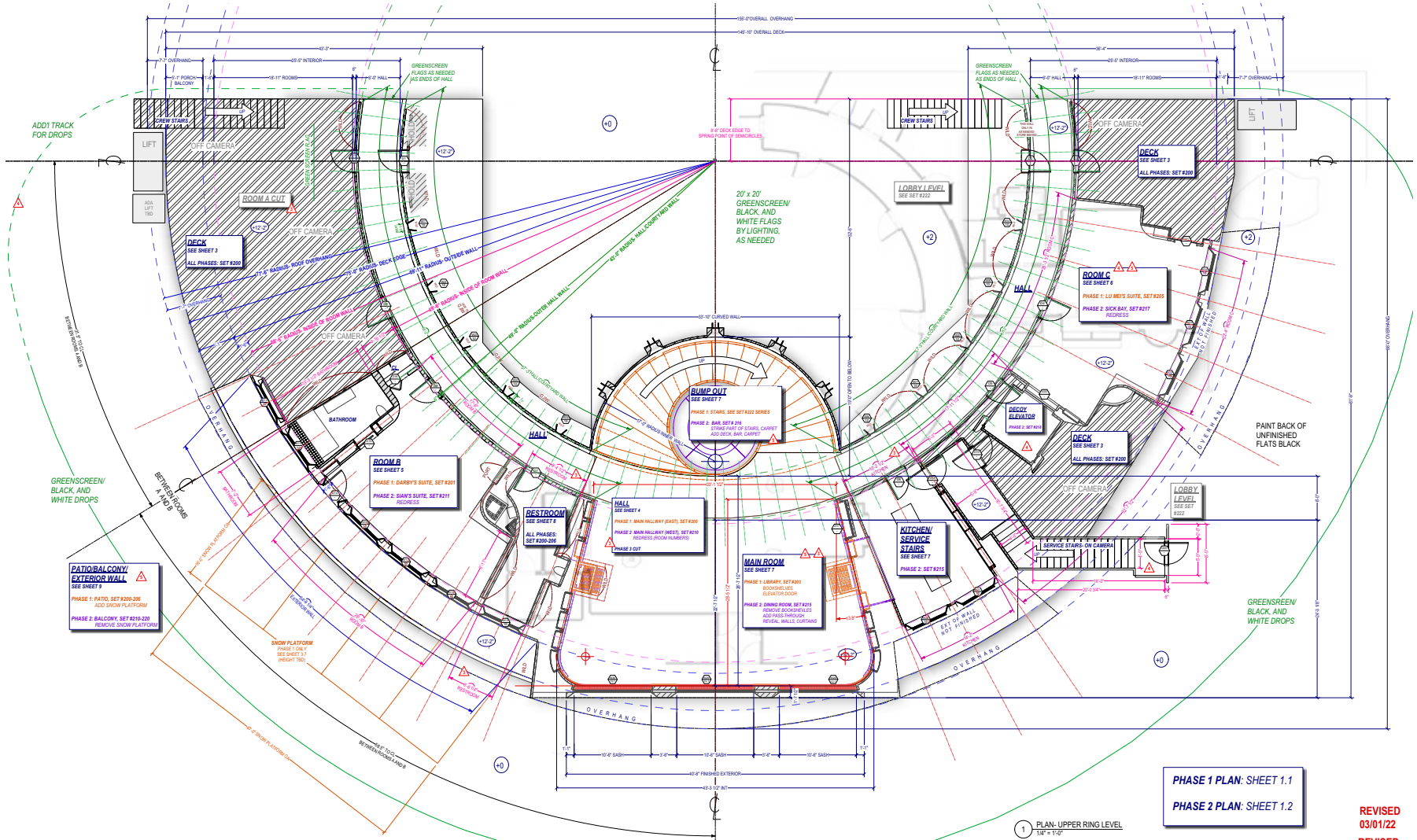
<b>RETREAT</b>		INT HOTEL- CONCEPTUAL	PROJECT NO.	200-220	CONTRACT NO.	C3
DESIGNER	CONCEPT PLANS- PHASES	SCALE	AS NOTED			
DATE	STAGE 3	PROJECT	BO			
12/16/21						







Hotel - Lobby Level • Entrance • Concept Art



PHASE 1 PLAN: SHEET 1.1  
PHASE 2 PLAN: SHEET 1.2

1 PLAN- UPPER RING LEVEL  
1/8" = 1'-0"

- REVISIONS:**
- ▲ 1/13/22- UPDATED DIMS, ADDED DOOR AND WINDOW SCHEDULES
  - HOLDS REMOVED
  - ▲ 01/28/22- ADD ROOM A INTERIOR, MODIFY BATHROOM
  - ▲ 02/04/22- CUT PHASE 3A, CUT ROOM A, CUT GUEST ELEVATOR, HOLDS REMOVED, UPDATED DIMS
  - ▲ 02/14/22- ROOM C, SERVICE STAIRS, GREEN SCREEN UPDATED
  - ▲ 03/09/22- ROOM C AS LU MEI, RAILING IN BOTH PHASES, CHANGE OVER NOTES

REVISED  
03/01/22  
REVISED  
02/14/22  
REVISED  
02/04/22  
REVISED  
01/28/22  
REVISED  
1/13/22

RELEASED  
12/16/21

LOC	HALL	NO	HALL	NO	HALL	NO	HALL	NO	HALL	NO	HALL	NO	ROOM A	ROOM B	LIBRARY	KITCHEN	ROOM C	STAIRS	STAIRS	STAIRS
NO	FIXED																			
TYPE	FIXED																			
SIZE	1'-0" W x 1'-0" H x 1'-0" D																			
FRMA	STAINED SASH																			
FRMB	STAINED SASH																			
FRMC	STAINED SASH																			
FRMD	STAINED SASH																			
FRME	STAINED SASH																			
FRMF	STAINED SASH																			
FRMG	STAINED SASH																			
FRMH	STAINED SASH																			
FRMI	STAINED SASH																			
FRMJ	STAINED SASH																			
FRMK	STAINED SASH																			
FRML	STAINED SASH																			
FRMN	STAINED SASH																			
FRMO	STAINED SASH																			
FRMP	STAINED SASH																			
FRMQ	STAINED SASH																			
FRMR	STAINED SASH																			
FRMS	STAINED SASH																			
FRMT	STAINED SASH																			
FRMU	STAINED SASH																			
FRMV	STAINED SASH																			
FRMW	STAINED SASH																			
FRMX	STAINED SASH																			
FRMY	STAINED SASH																			
FRMZ	STAINED SASH																			
FRMA	STAINED SASH																			
FRMB	STAINED SASH																			
FRMC	STAINED SASH																			
FRMD	STAINED SASH																			
FRME	STAINED SASH																			
FRMF	STAINED SASH																			
FRMG	STAINED SASH																			
FRMH	STAINED SASH																			
FRMI	STAINED SASH																			
FRMJ	STAINED SASH																			
FRMK	STAINED SASH																			
FRML	STAINED SASH																			
FRMN	STAINED SASH																			
FRMO	STAINED SASH																			
FRMP	STAINED SASH																			
FRMQ	STAINED SASH																			
FRMR	STAINED SASH																			
FRMS	STAINED SASH																			
FRMT	STAINED SASH																			
FRMU	STAINED SASH																			
FRMV	STAINED SASH																			
FRMW	STAINED SASH																			
FRMX	STAINED SASH																			
FRMY	STAINED SASH																			
FRMZ	STAINED SASH																			







Hotel - Lobby Level





Hotel – Lobby Level • Concept Art

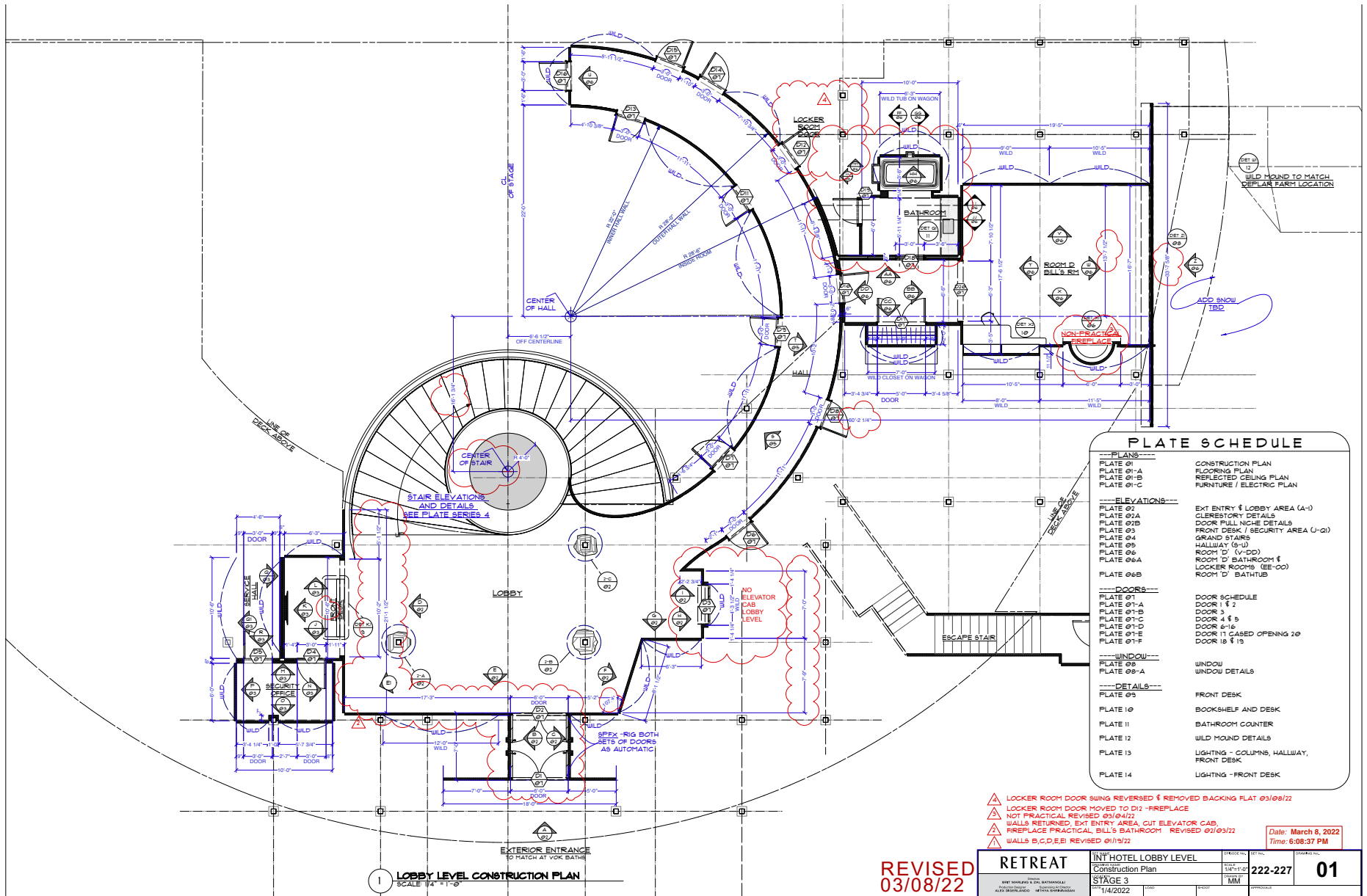


PLATE SCHEDULE	
--- PLANS ---	
PLATE 01	CONSTRUCTION PLAN
PLATE 01-A	FLOORING PLAN
PLATE 01-B	REFLECTED CEILING PLAN
PLATE 01-C	FURNITURE / ELECTRIC PLAN
--- ELEVATIONS ---	
PLATE 02	EXT ENTRY & LOBBY AREA (A-I)
PLATE 02A	CLERESTORY DETAILS
PLATE 02B	DOOR FULL NGIE DETAILS
PLATE 03	FRONT DESK / SECURITY AREA (J-Q)
PLATE 04	GRAND STAIRS
PLATE 05	HALLWAY (S-U)
PLATE 06	ROOM 'D' (V-W)
PLATE 06A	ROOM 'D' BATHROOM &
	LOCKER ROOMS (EE-OO)
PLATE 06B	ROOM 'D' BATHUB
--- DOORS ---	
PLATE 07	DOOR SCHEDULE
PLATE 07-A	DOOR 1 & 2
PLATE 07-B	DOOR 3
PLATE 07-C	DOOR 4 & 5
PLATE 07-D	DOOR 6-16
PLATE 07-E	DOOR 11 CASED OPENING 20
PLATE 07-F	DOOR 18 & 13
--- WINDOW ---	
PLATE 08	WINDOW
PLATE 08-A	WINDOW DETAILS
--- DETAILS ---	
PLATE 09	FRONT DESK
PLATE 10	BOOKSHELF AND DESK
PLATE 11	BATHROOM COUNTER
PLATE 12	WILD MOUND DETAILS
PLATE 13	LIGHTING - COLUMN, HALLWAY, FRONT DESK
PLATE 14	LIGHTING - FRONT DESK

- ▲ LOCKER ROOM DOOR SWING REVERSED & REMOVED BACKING PLAT 03/08/22
  - ▲ LOCKER ROOM DOOR MOVED TO D12 - FIREPLACE
  - ▲ NOT PRACTICAL REVISED 03/04/22
  - ▲ WALLS RETURNED, EXT ENTRY AREA, CUT ELEVATOR CAB, FIREPLACE PRACTICAL, BILL'S BATHROOM REVISED 02/03/22
  - ▲ WALLS B,C,D,E,I REVISED 01/19/22
- Date: March 8, 2022  
Time: 6:08:37 PM

**REVISED 03/08/22**

<b>RETREAT</b>	INT HOTEL LOBBY LEVEL	SCALE	1/4" = 1'-0"	NO. 222-227	01
	Construction Plan	DATE	1/4/2022	PROJECT	
	STAGE 3	UNIT	MM		



Hotel - Lobby Level • Hallway

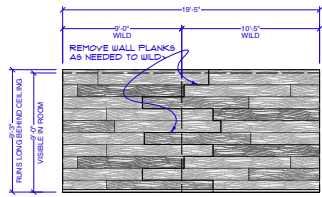




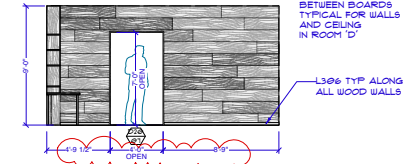
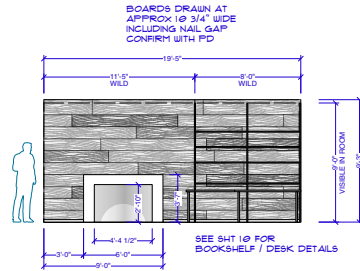
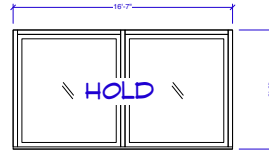
Hotel - Lobby Level • Bill's Suite



Hotel - Lobby Level • Bill's Suite



1/4" BIRCH WOOD WALLS PER PD WITH NAIL GAP BETWEEN BOARDS TYPICAL FOR WALLS AND CEILING IN ROOM 'D'

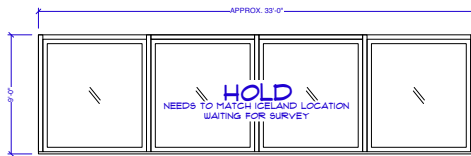


V ELEV- WALL 'V' -ROOM 'D' (AS BILL'S ROOM)  
SCALE 1/4" = 1'-0"

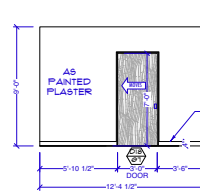
W ELEV- WALL 'W' -ROOM 'D'  
SCALE 1/4" = 1'-0"

X ELEV- WALL 'X' -ROOM 'D' (AS BILL'S ROOM)  
SCALE 1/4" = 1'-0"

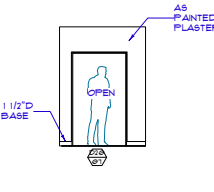
Y ELEV- WALL 'Y' -ROOM 'D'  
SCALE 1/4" = 1'-0"



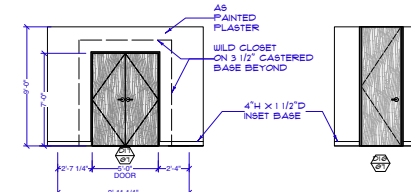
Z ELEV- WALL 'Z' -REVERSE OF 'W'  
SCALE 1/4" = 1'-0"



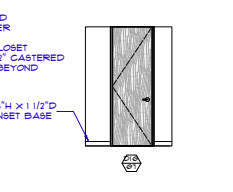
AA ELEV- WALL 'AA' TO BATH  
SCALE 1/4" = 1'-0"



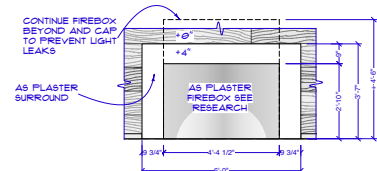
BB ELEV- WALL 'BB' TO ROOM  
SCALE 1/4" = 1'-0"



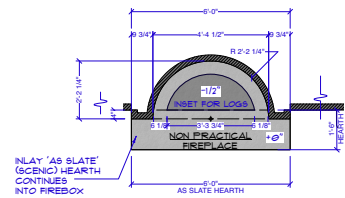
CC ELEV- WALL 'CC' TO CLOSET  
SCALE 1/4" = 1'-0"



DD ELEV- WALL 'DD' TO HALL  
SCALE 1/4" = 1'-0"



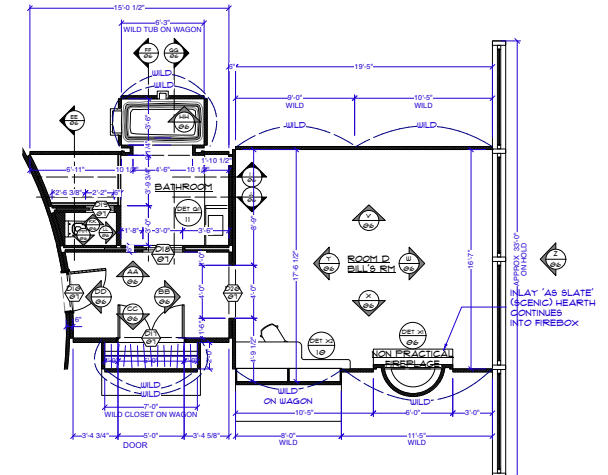
X-2 ELEV- ROOM 'D' FIREPLACE  
SCALE 1/2" = 1'-0"



X-1 PLAN- ROOM 'D' FIREPLACE  
SCALE 1/2" = 1'-0"



~ RESEARCH PHOTO FIREPLACE  
SCALE 3/4" = 1'-0"



WALL TY & BATH-TUB REVISED 01/19/22

Date: January 19, 2022  
Time: 7:16:58 PM

REVISED  
01/19/22

PROJECT	INT'L HOTEL LOBBY LEVEL	REVISION NO.	NOTED	DATE	222-227	06
LOCATION	Rm 'D' - Bill's Elev V-DD & Fireplace	DATE	MM	DD		
STAGE	STAGE 3	DATE	MM	DD		
DATE	01/15/2022	TIME				



*Deplar Farm – Location Photo*



*Stage Set*



*Stage Set*





Hotel - Lobby Level • Women's Locker Room

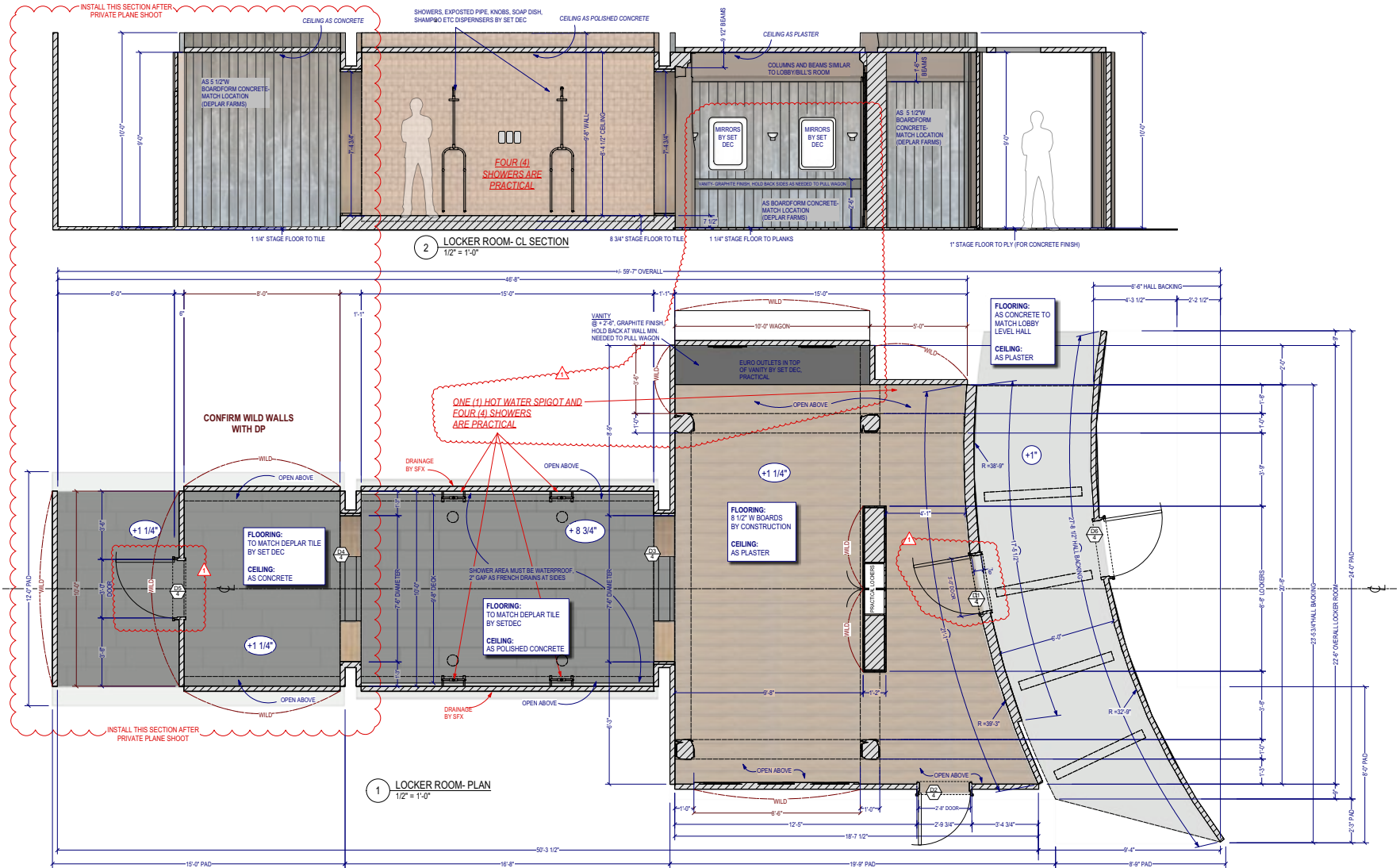


Hotel - Lobby Level • Women's Locker Room



Hotel - Lobby Level • Women's Locker Room





**REVISIONS:**  
 ▲ 04/13/22, VANITY SINKS REMOVED- WAGON ADDED, SPIGOT NOTE ADDED, DOOR D1 SWING CHANGED, DOOR D2 DETAILS CHANGED, LONGER HALLWAY

**REVISED**  
 04/13/22

**RELEASED**  
 04/04/22

<b>RETREAT</b>		INT HOTEL LOCKER ROOM	NO. 231	1
PLAN ELEVATIONS		AS NOTED		
DATE: 04/13/22		BY: [Signature]	CHECKED: [Signature]	DATE: 04/04/22









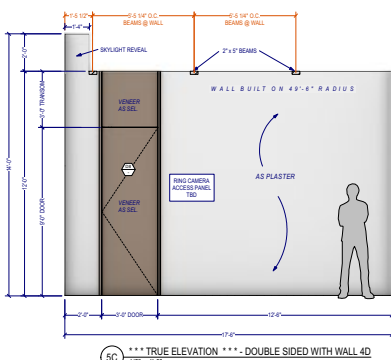
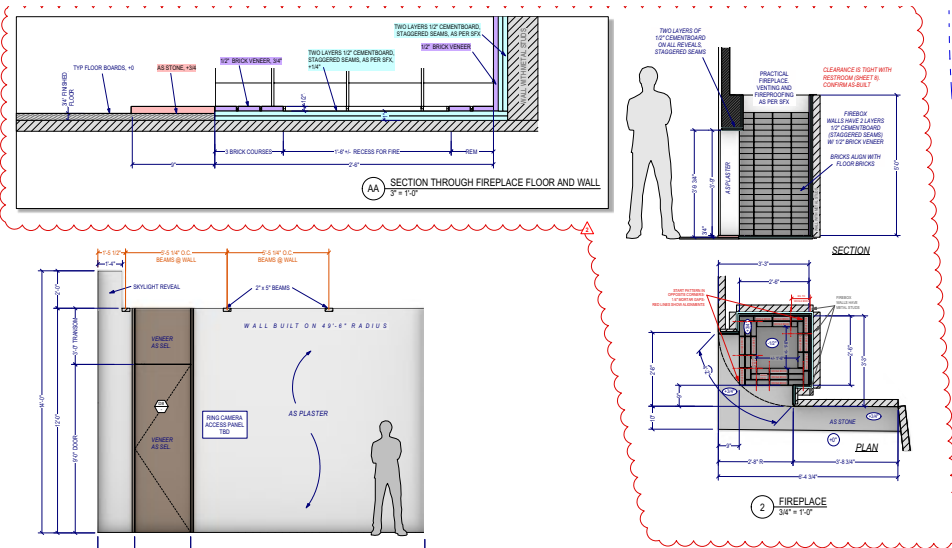


Hotel - Ring Level • Darby's Suite

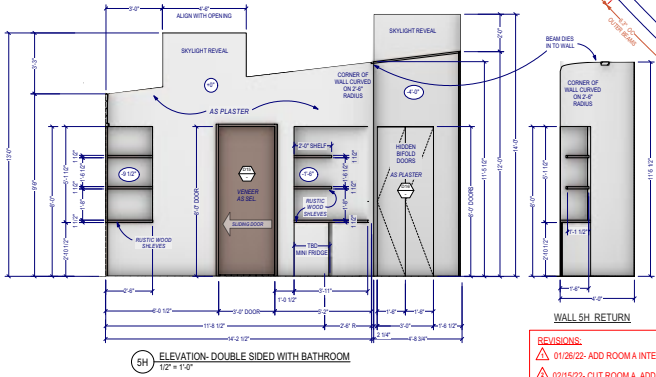
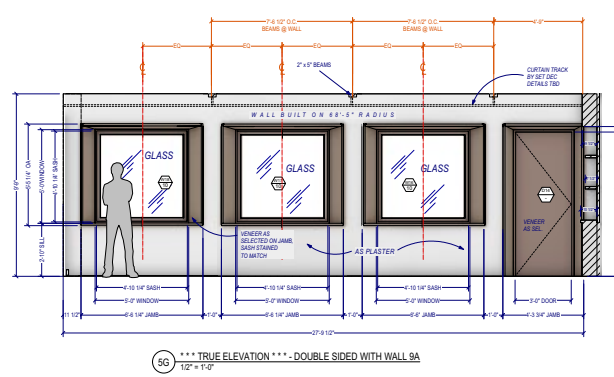
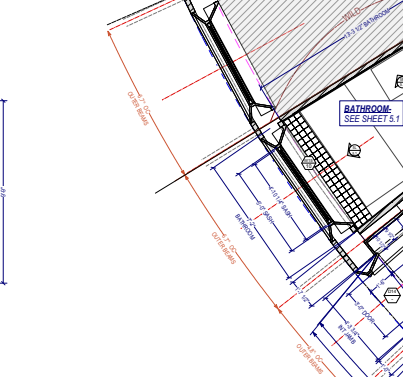
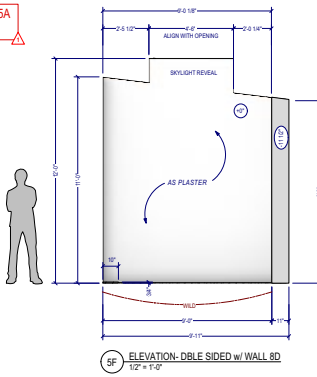
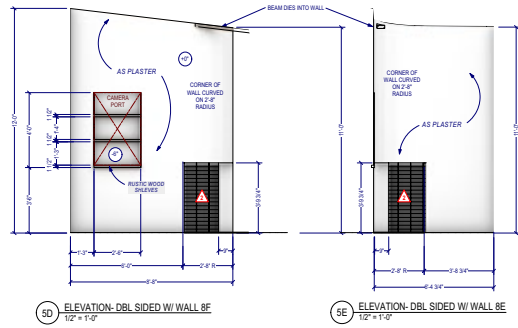




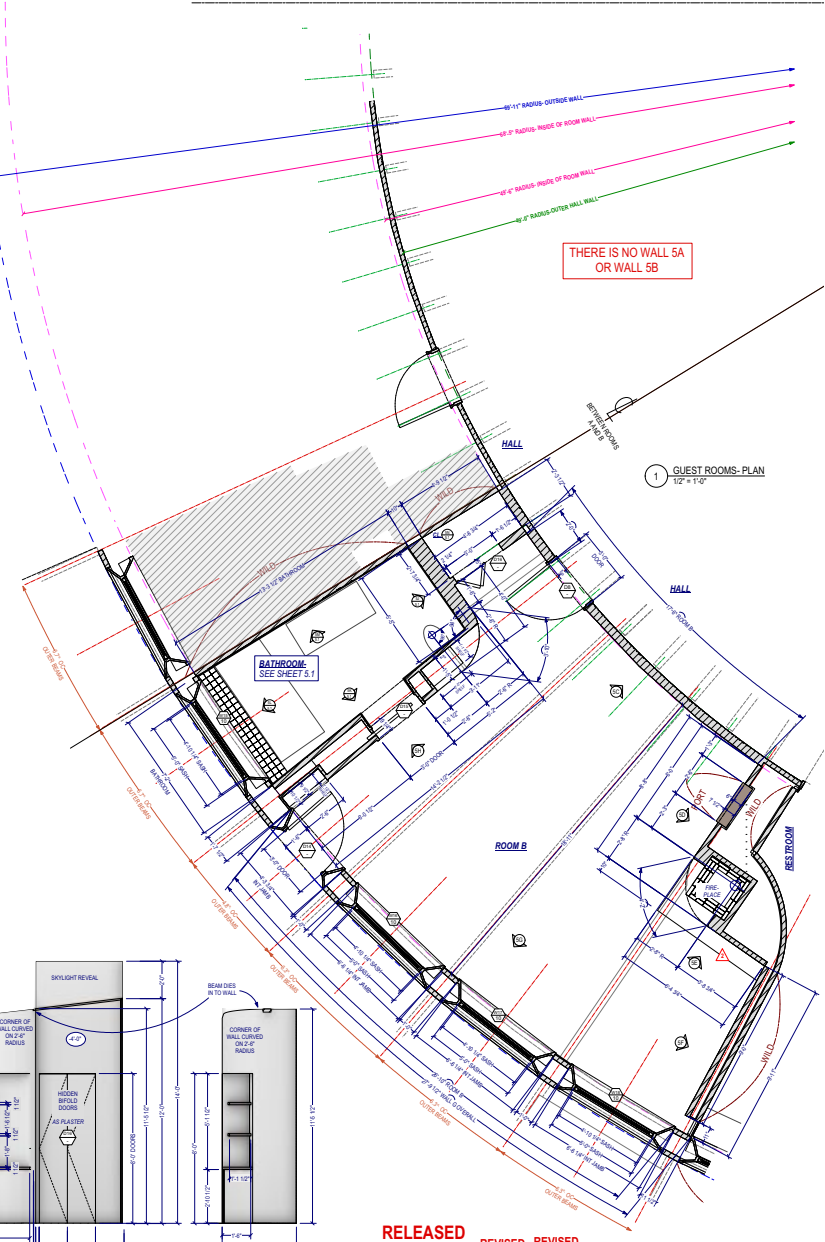
Hotel – Ring Level • Darby's Suite • Concept Art



THERE IS NO WALL 5A OR WALL 5B



REVISIONS  
 01/26/22- ADD ROOM A INTERIOR  
 02/05/22- CUT ROOM A, ADD FIREPLACE DETAILS



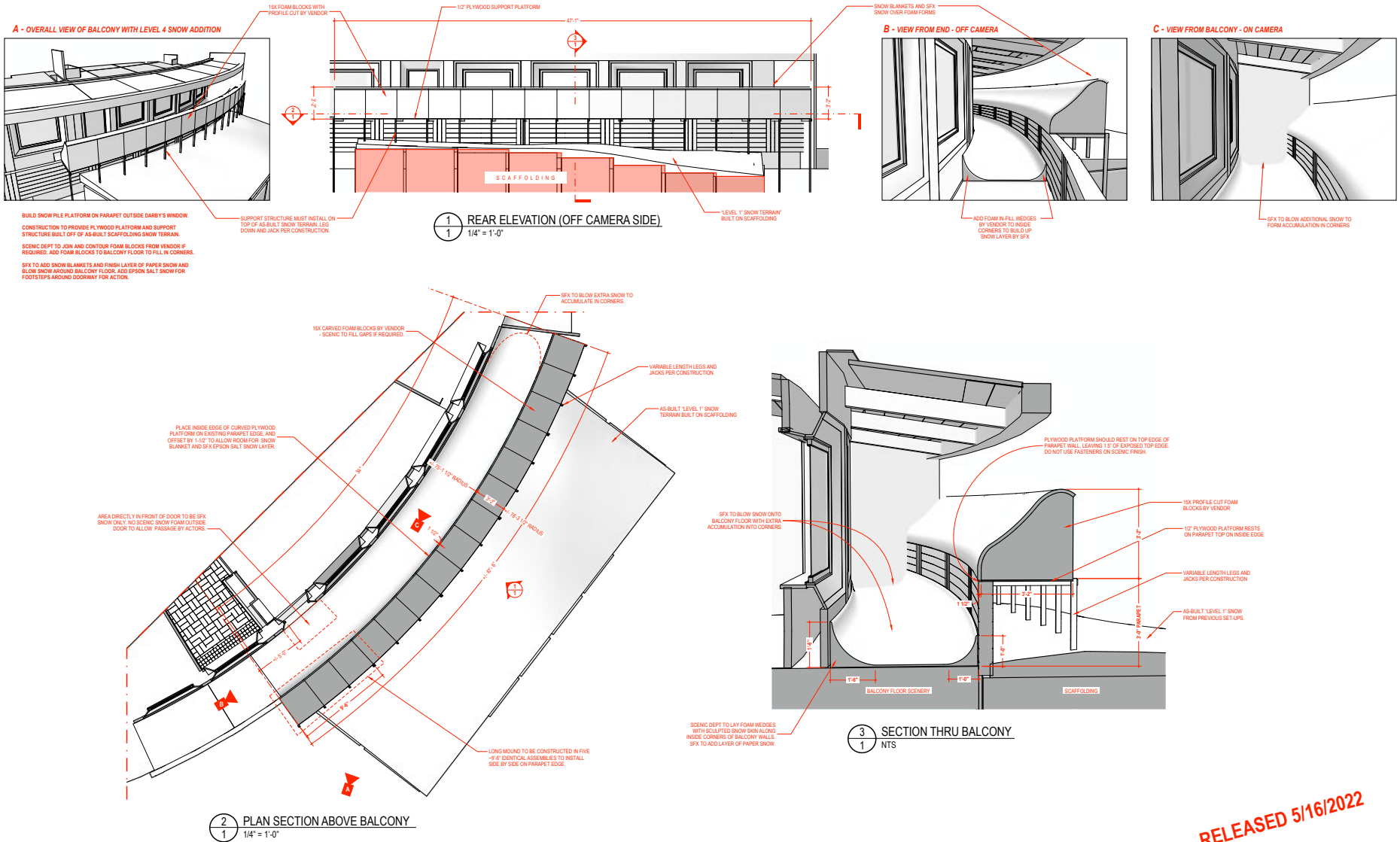
RELEASED 01/21/22  
 REVISED 01/26/22  
 REVISED 02/15/22

ROOM A- SET #212, ROOM B- SET#201/211

RETREAT	BY HOTEL	NO. 200-220	5
	PHASE LEVEL, GUEST ROOMS A and B	STAGE 3	



Hotel – Ring Level • Darby’s Suite • Balcony Snow Extension



RELEASED 5/16/2022

<b>RETREAT</b>		EXTANT RING LEVEL - DARBY'S SUITE RM 8	200	5.3
		DARBY'S BALCONY SNOW EXTENSION	AS NOTED	
		CHALLENGE STAGE 3	JM	
		MAY 11, 2022		



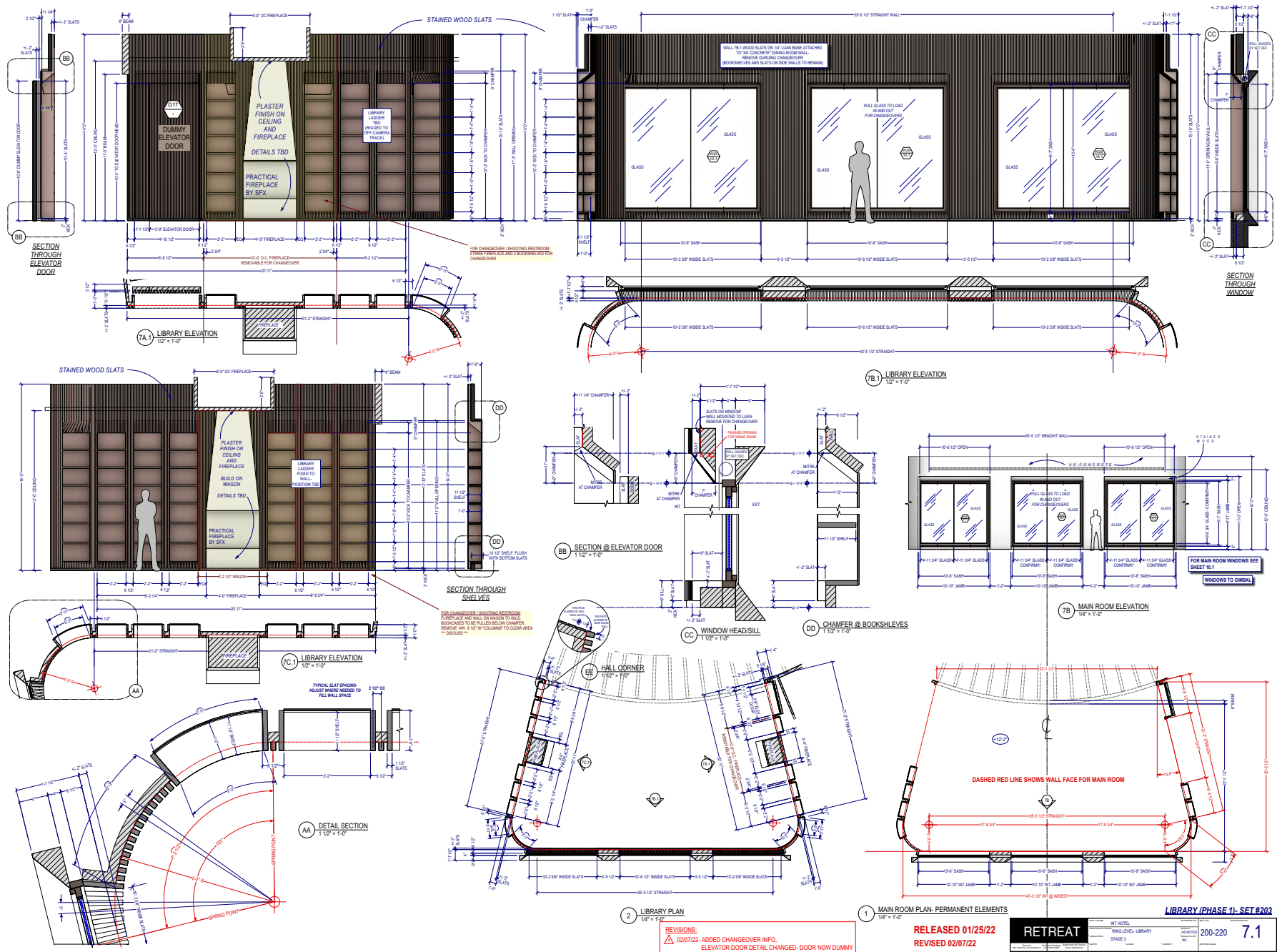
Hotel - Ring Level • Library







Hotel - Ring Level • Library



REVISIONS:  
 Δ 02/07/22- ADDED CHANGEOVER INFO.  
 ELEVATOR DOOR DETAIL CHANGED- DOOR NOW DUMMY

1 MAIN ROOM PLAN- PERMANENT ELEMENTS  
 1/4" = 1'-0"

2 LIBRARY PLAN  
 1/4" = 1'-0"

RELEASED 01/25/22  
 REVISED 02/07/22

MIT HOTEL	PROJECT NO.	200-220	7.1
RING LEVEL, LIBRARY	DATE		
STAGE 3			

LIBRARY (PHASE 1)- SET #203



Hotel • Ring Level • Dining Room • VFX Plate



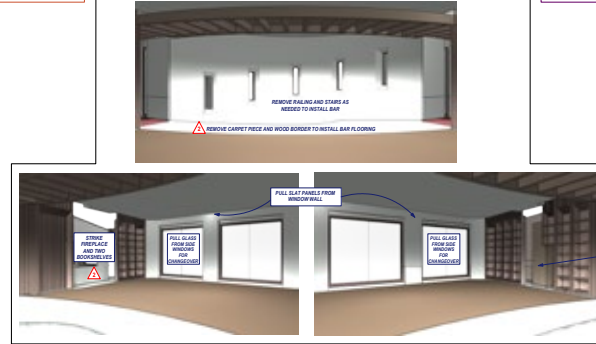
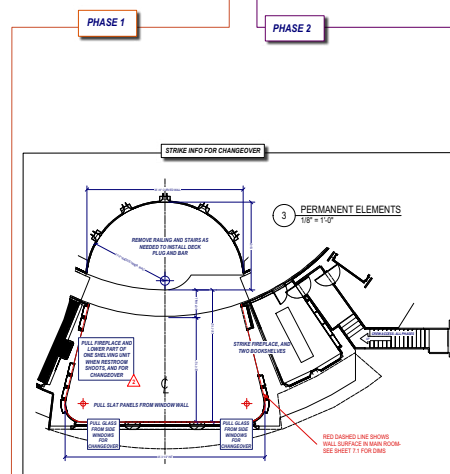
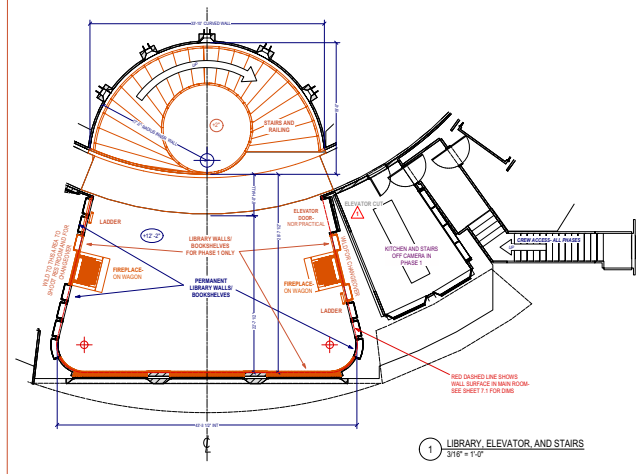
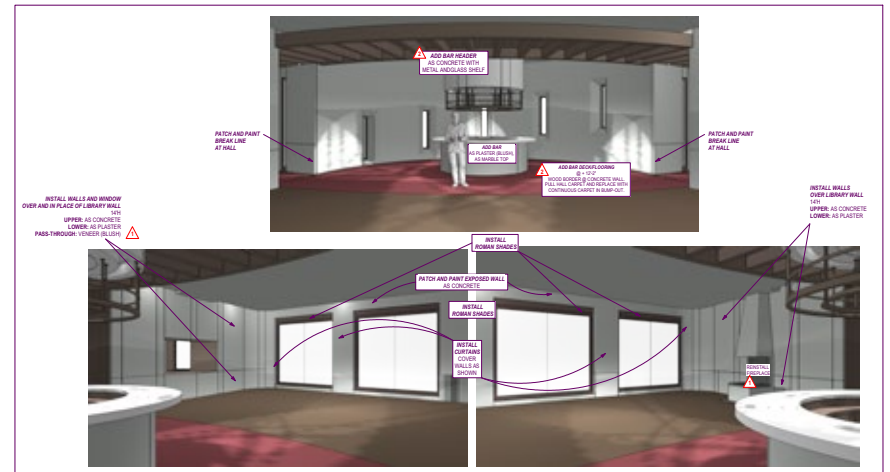
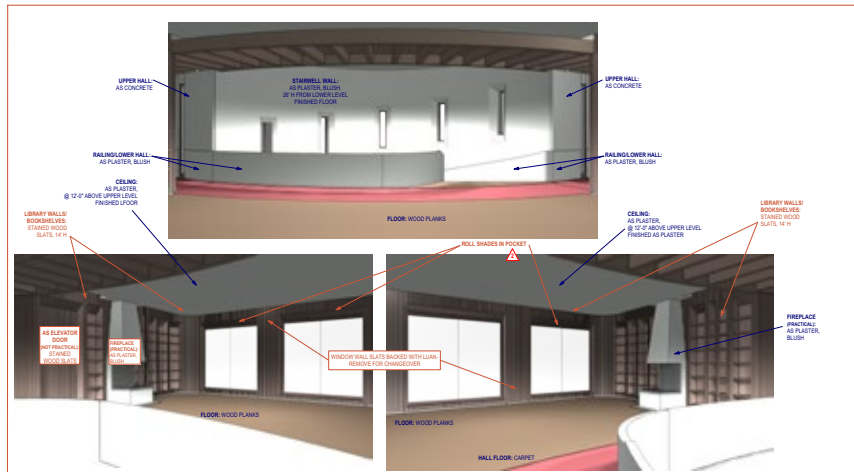


Hotel - Ring Level • Dining Room





Hotel - Ring Level • Dining Room • Concept Art



REVISED  
03/09/22  
RELEASED  
02/07/22  
RELEASED  
01/25/22

REVISIONS:  
 ▲ 2/07/22- UPDATED CHANGEOVER INFO  
 ▲ 3/09/22- UPDATED CHANGEOVER INFO

LIBRARY: SEE SHEET 7.1  
 DINING ROOM: SEE SHEET 7.2  
 KITCHEN: SEE SHEET 7.3  
 ELEVATOR CUT ▲

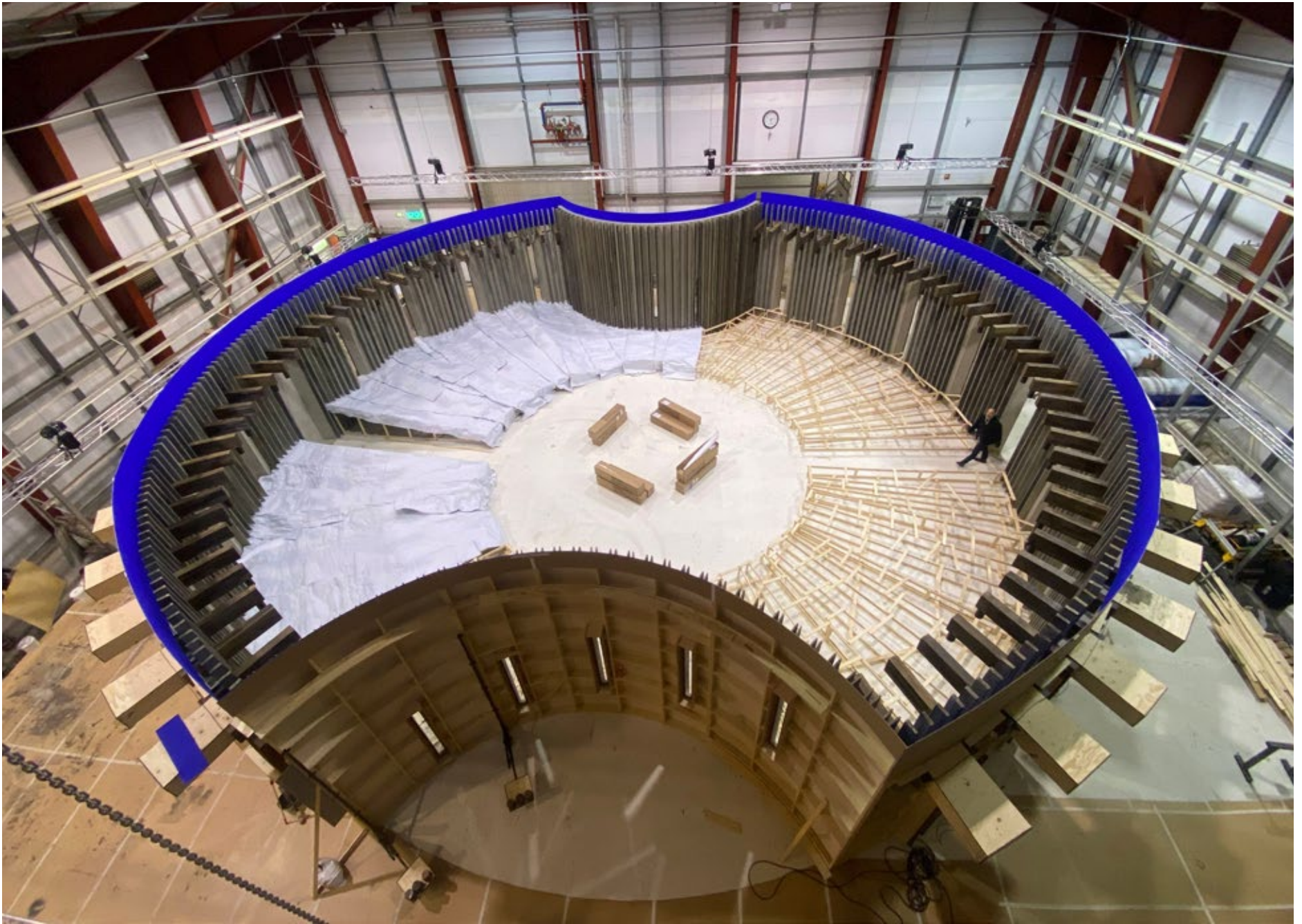
LIBRARY/STAIRS (PHASE 1)- SET #203/204  
 DINING ROOM AND KITCHEN/BAR (PHASE 2)- SET #215/216

RETREAT	INT HOTEL	200-220	7
CHANGEOVER SCHEMATIC: MAIN ROOM AND BAR CUT	STAGE 2		



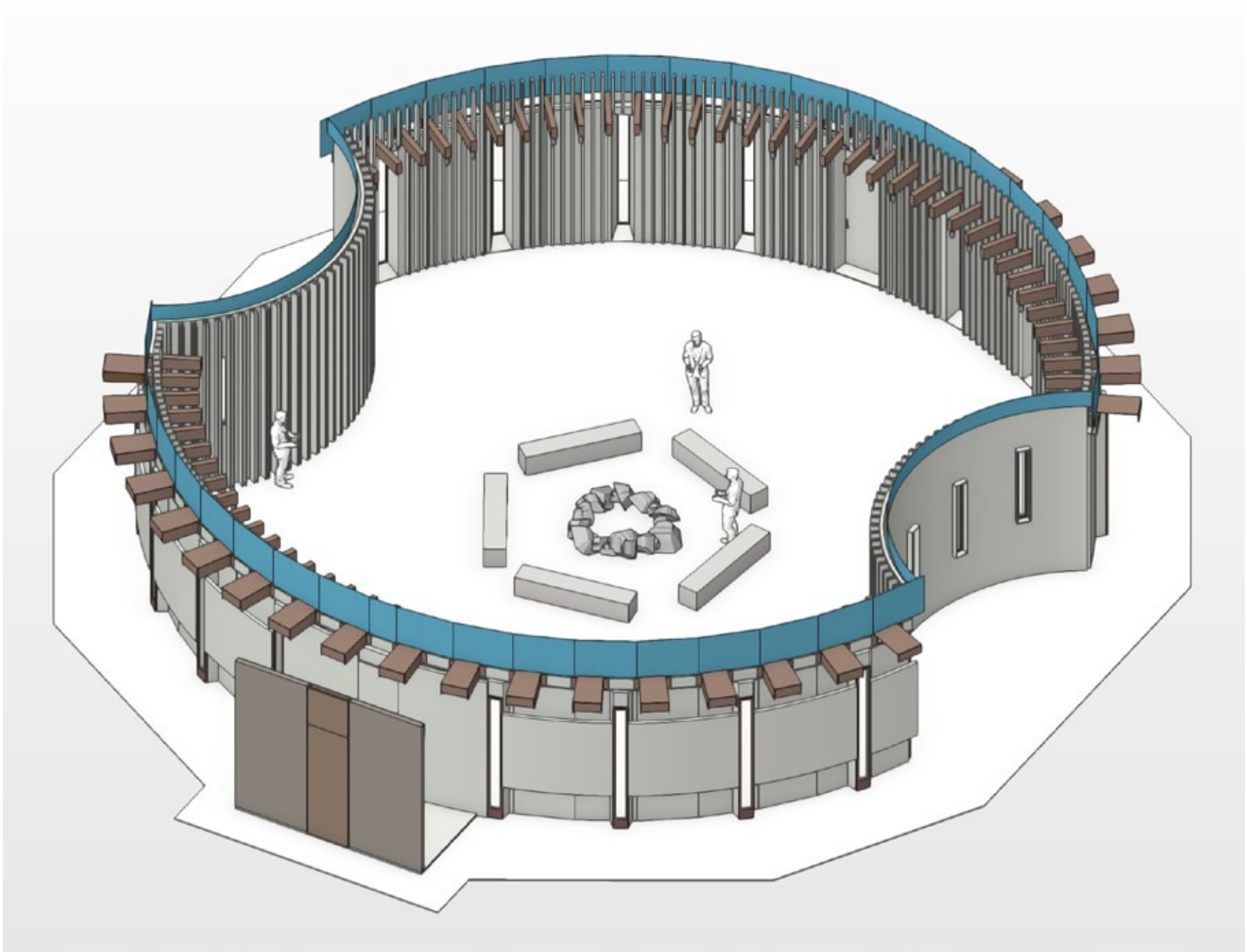


Hotel - Ring Level • Courtyard • NJ Build

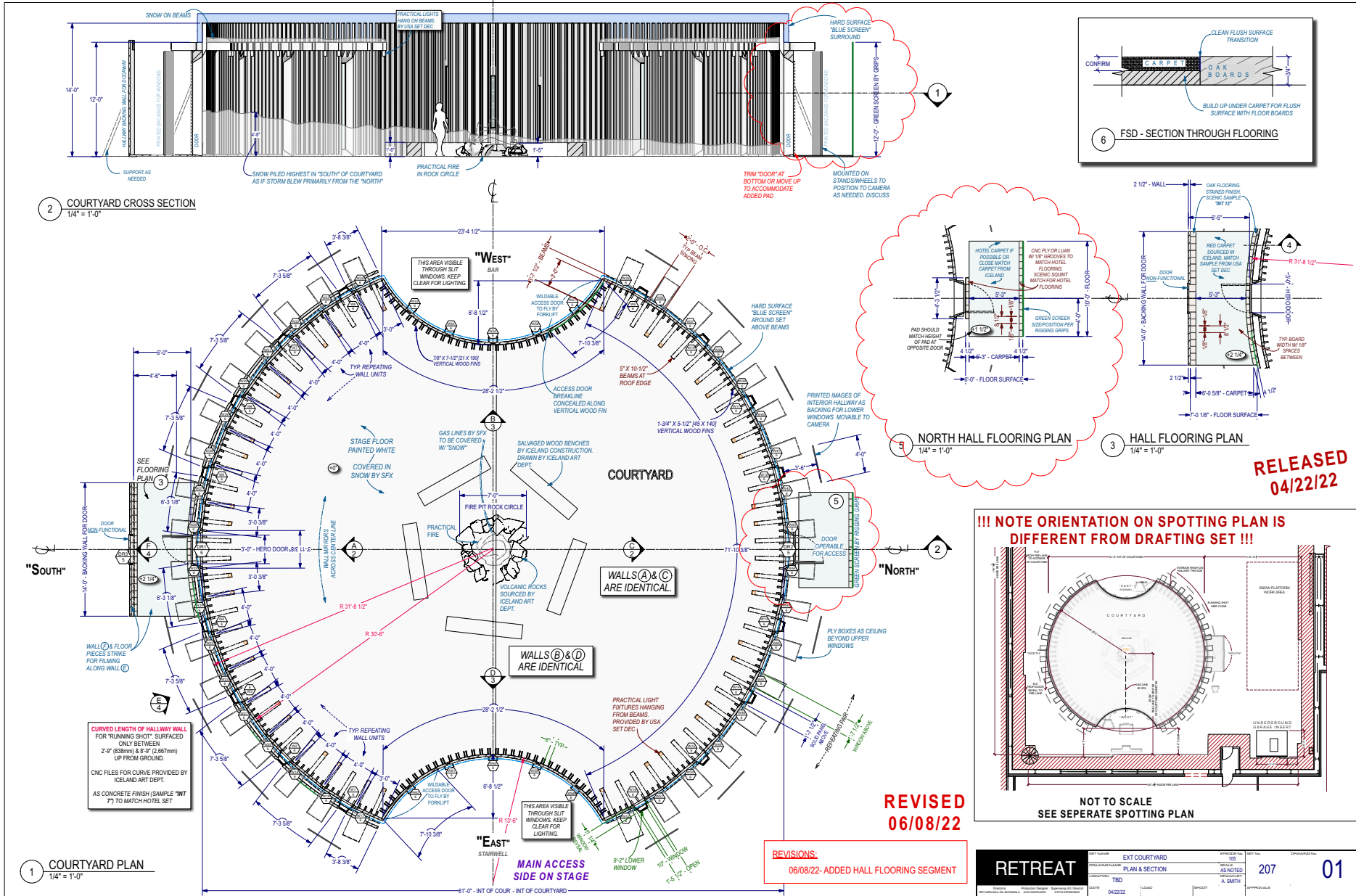


Hotel - Ring Level • Courtyard • Iceland Build





Hotel - Ring Level • Courtyard • 3D Model







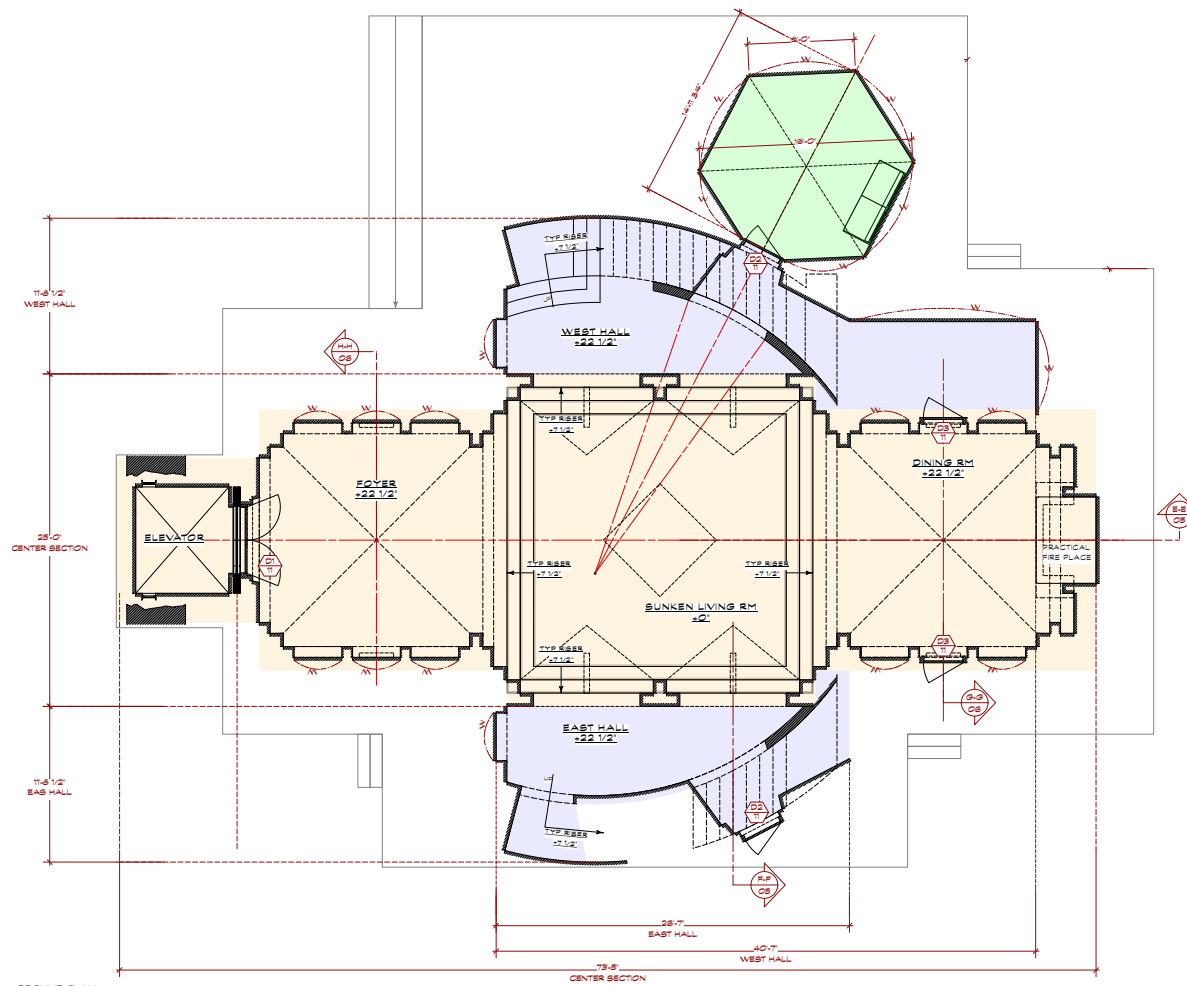












AA-AA  
-  
GROUND PLAN  
Scale: 1/4" = 1'-0"

**REVISED**  
**02/17/22**

02/17 - DOOR BUGS

02/11 - WEST HALL REDUCED; EAST STAIRCASE REDUCED TO SECTION VISIBLE ABOVE DOOR;  
EAST HALL CUT BEHIND DINING ROOM

**RELEASED**  
**02/01/22**

<b>RETREAT</b>		BY NAME	DESIGNER NO.	DATE	LOAD	SPOT	APPROVALS
DRAWING NUMBER		GROUND PLAN - MASTER		NOTED	234		01
DATE				DESIGNED BY	KS		

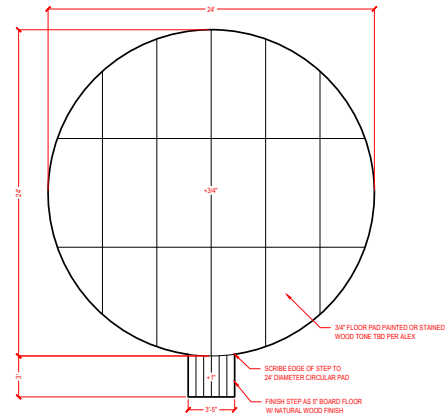
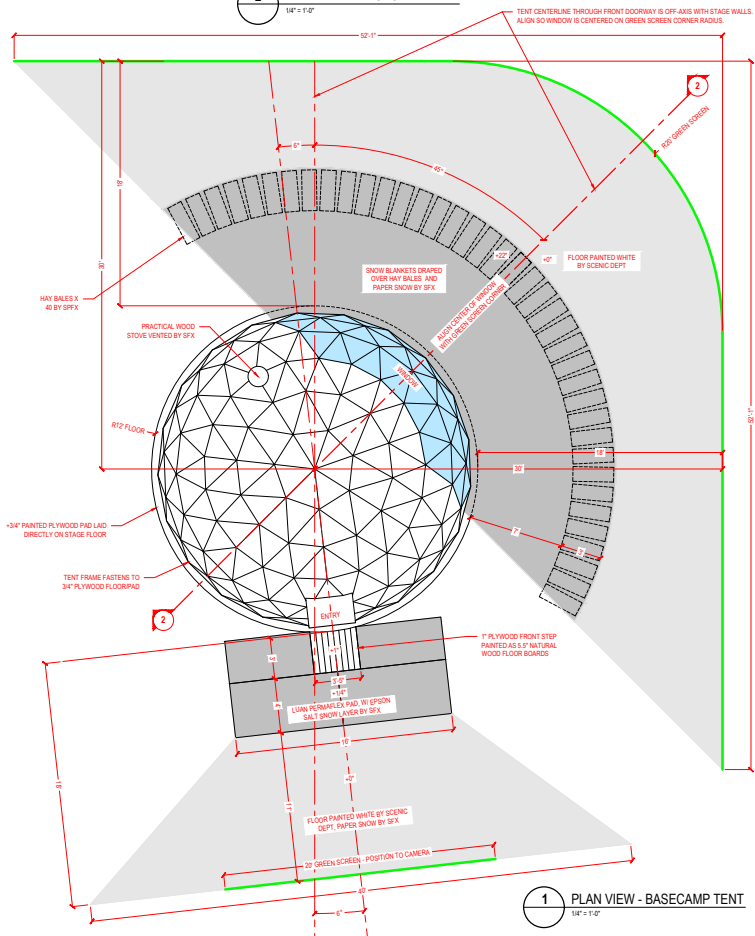
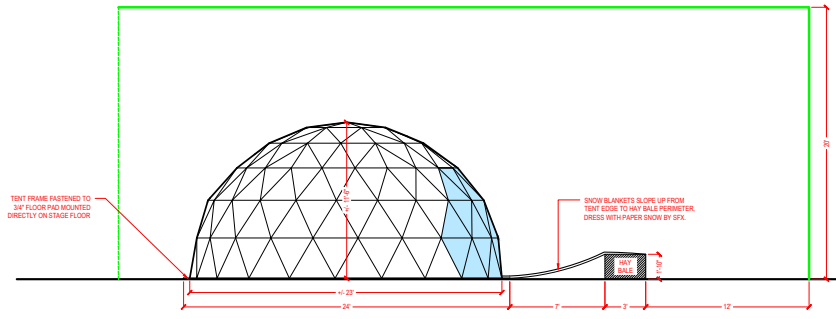




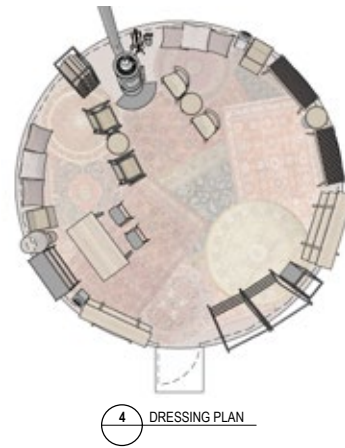
Iceland Exteriors – Basecamp Tent



Iceland Exteriors – Basecamp Tent



3 PLAN VIEW - FLOOR PAD  
1/8" = 1'-0"



RELEASED 5/4/2022

RETREAT	INTXTEXT BASECAMP TENT	DATE	115	1
ON STAGE CONSTRUCTION PLAN	1/8" = 1'-0"	MAY 3 2022		
RELEASE STAGE 2				





Iceland Exteriors – Basalt Canyon • Location Photo



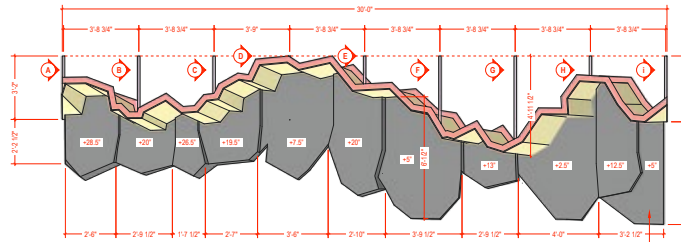
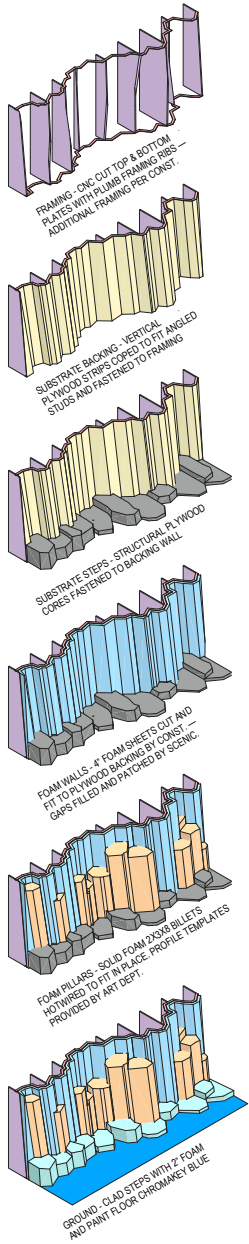
Iceland Exteriors – Basalt Canyon • Location Photo



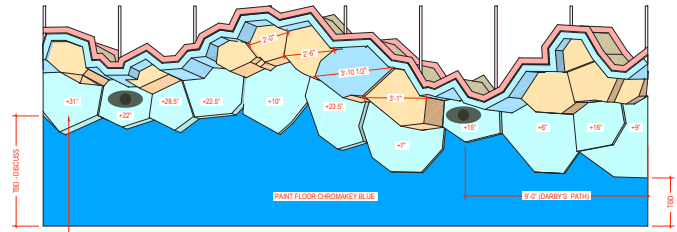
Iceland Exteriors – Basalt Canyon • Stage Build



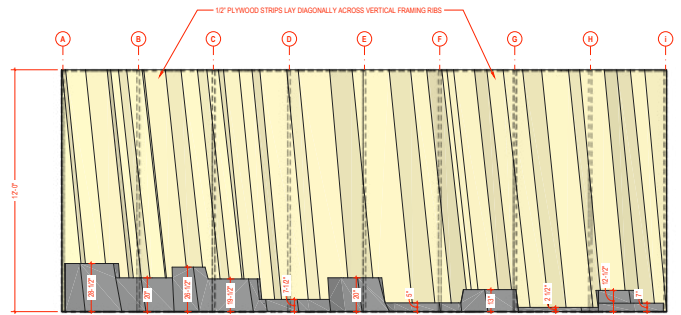
Iceland Exteriors – Basalt Canyon • Stage Build



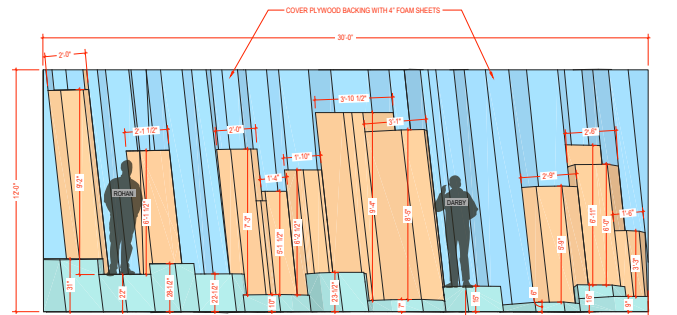
1A TOP VIEW - SUBSTRATE ONLY  
3/8" = 1'-0"



1B TOP VIEW - COMPLETE FOAM ASSEMBLY  
3/8" = 1'-0"

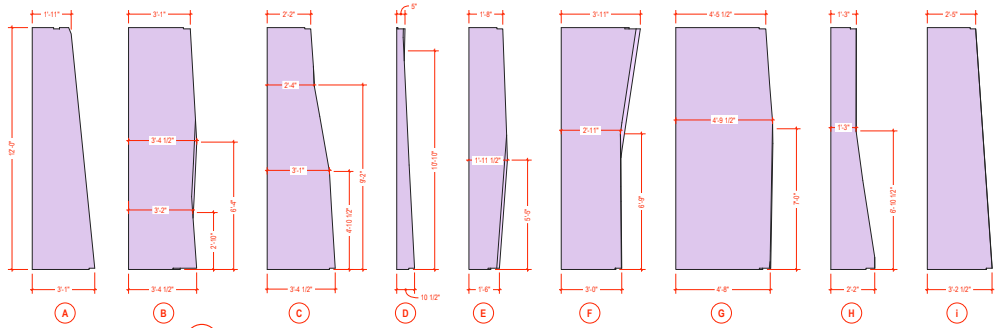


2A FRONT VIEW - SUBSTRATE ONLY  
3/8" = 1'-0"



2B FRONT VIEW - COMPLETE FOAM ASSEMBLY  
3/8" = 1'-0"

VERTICAL FRAMING RIBS    CNC CUT PLYWOOD PLATES    1/2" PLYWOOD BACKING    PLYWOOD BOX CORES    4" FOAM WALL SHEETS    CARVED 2X3X8 BILLETS    2" FOAM STEP SHEETS    CHROMAKEY BLUE FLOOR



A-I SIDE ELEVATION VIEWS - VERTICAL CONTOUR FRAMING RIBS SCALE: 3/8" = 1'-0"



SCENIC REFERENCE - ADDITIONAL BASALT PHOTO REFERENCE PROVIDED BY ART DEPT UPON REQUEST

PRELIMINARY 4/18/22

<b>RETREAT</b>		EXT BASALT CANYON - STAGE BUILD	DATE: 4/18/22	SCALE: 3/8" = 1'-0"	NO.:
PROJECT:	OVERVIEW - PLAN, ELEVATION, DETAILS	AS NOTED	114	1	
DATE:	RELEASE STAGE 2	MOSCA			
APR 18 2022	LOAD	SHOOT	APPROVAL:		



BOOKS

58

58

SAVING GRACE

BLACK ICE

OTTO PENZLER  
FORGED BY NIGHT

THE MISTERY  
SOLARIS

FINDING TESSA





Mysterious Bookshop

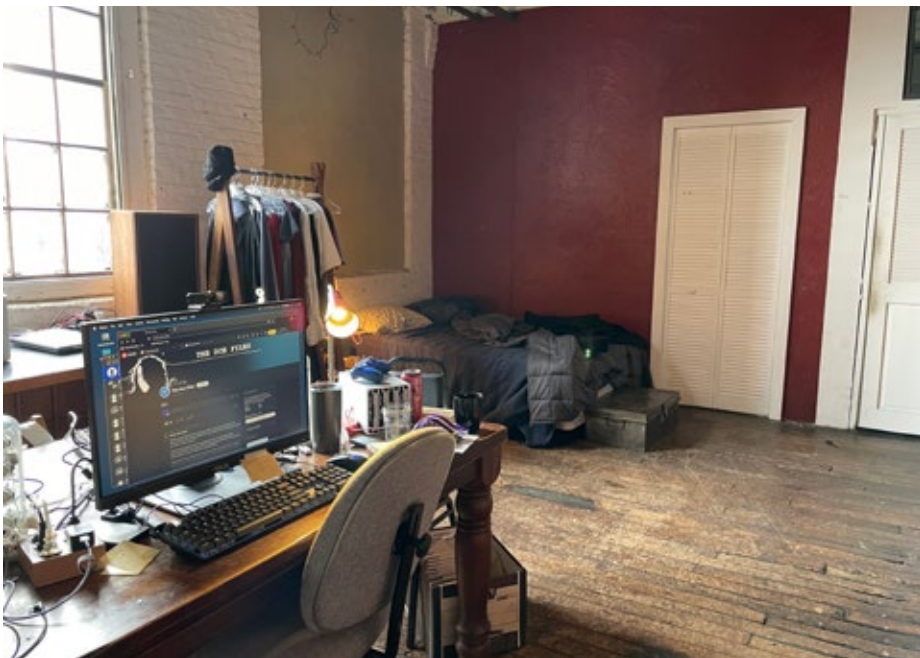




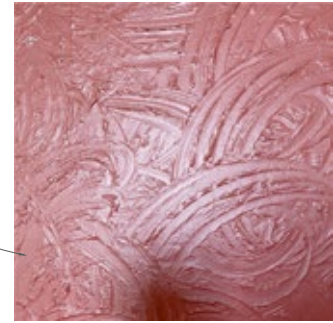
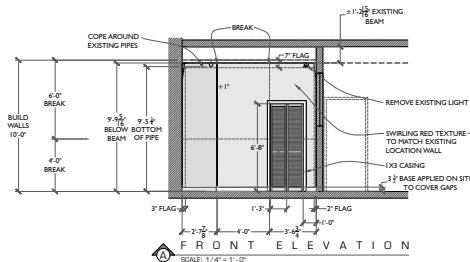
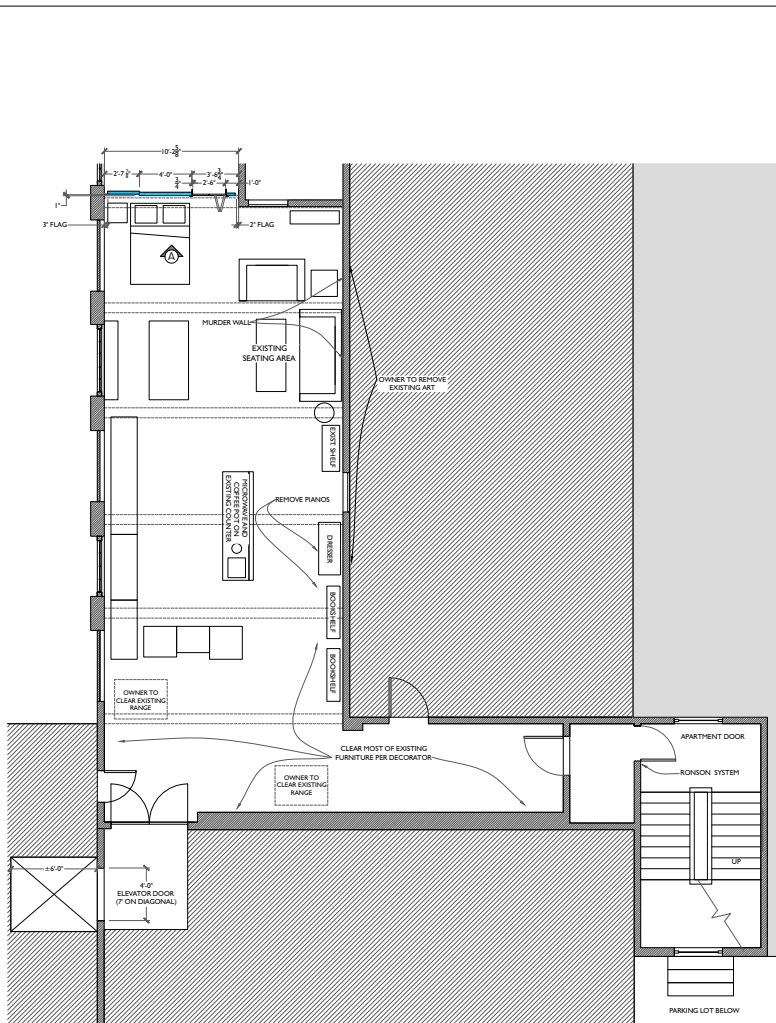
Darby's Apartment



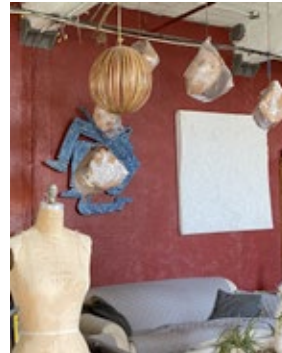
Darby's Apartment



Darby's Apartment



TEXTURE REFERENCE IMAGE  
SCALE: NTS



TEXTURE REFERENCE IMAGE  
SCALE: NTS



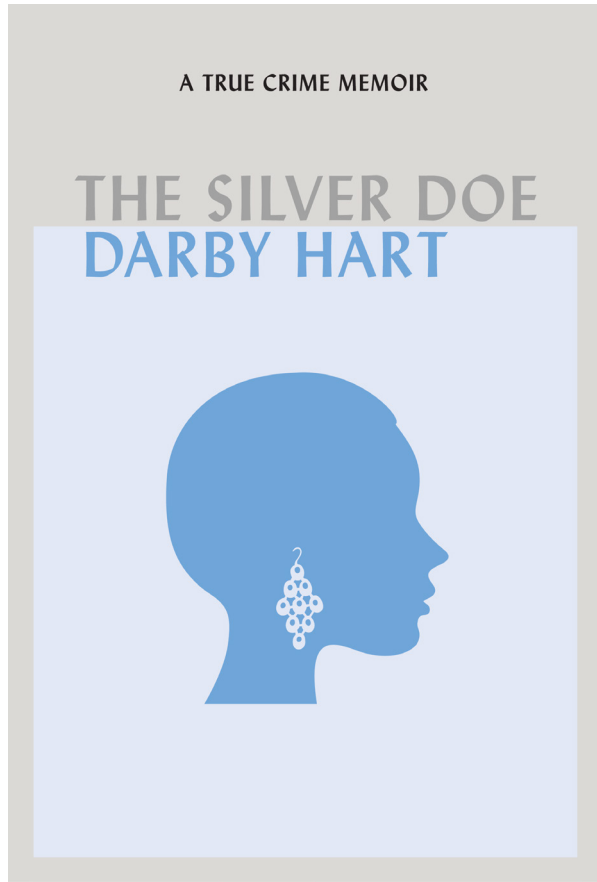
LOCATION REFERENCE IMAGE  
SCALE: NTS



CLOSET DOOR  
SCALE: NTS

RELEASED  
03.14.22

<b>RETREAT</b>	INT DARBYS APT	000	<b>407</b>	<b>01</b>
	PLUG WALL	SCALE: 1/4"=1'-0"		
DATE: 03.07.21	LOAN	DISCP	APPROVALS	







Clinton County Morgue - Iowa







Clinton County Morgue - Iowa





Darby's Dad's House - Iowa



Darby's Dad's House - Iowa





Darby's Dad's House - Iowa





Whispering Sands Motel – Nevada • Location Photo

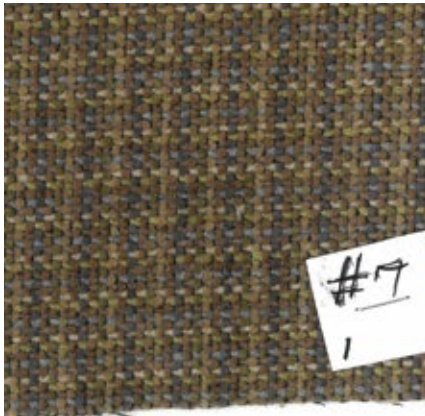




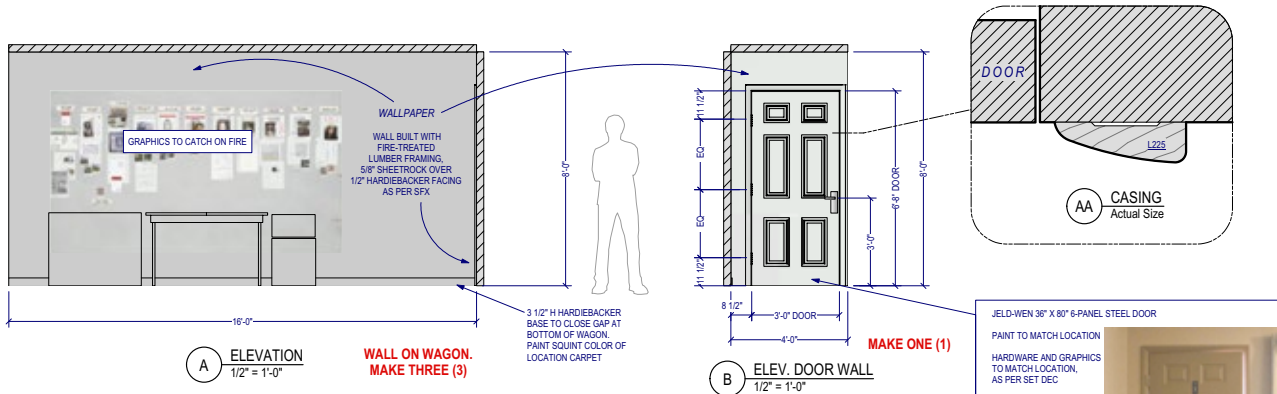
Whispering Sands Motel – Nevada • Location Photo



Whispering Sands Motel – Nevada • Burn Wall



Whispering Sands Motel – Nevada • Fabric & Wallpaper Swatches • Burn Test

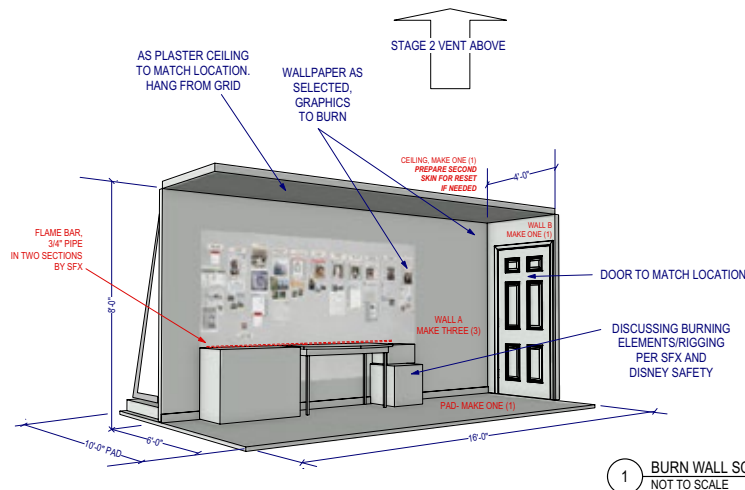
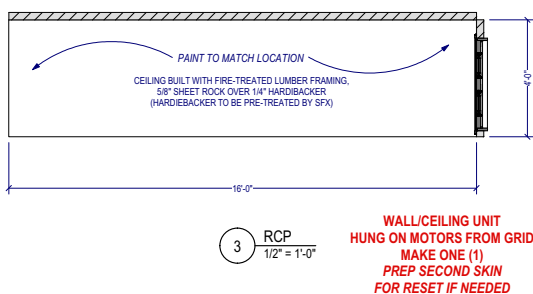
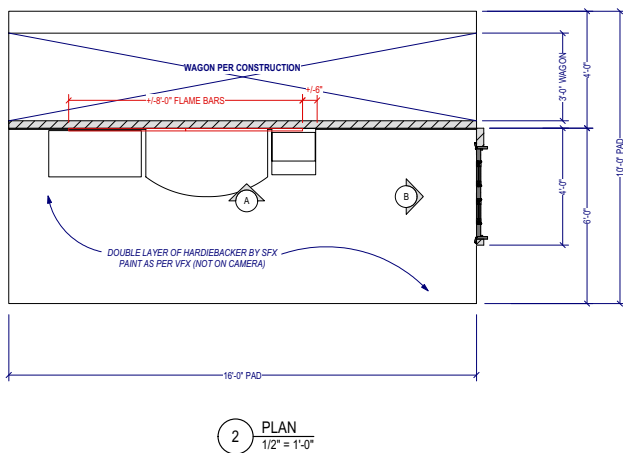


**THREE SHOTS OF BURNING WALL TO BE DONE ON STAGE:**  
 1. INSERT OF A SINGLE PAPER CATCHING ON FIRE FROM JOINT  
 2. SHOT OF WALL BURNING, NO ACTORS  
 3. SHOT OF ACTORS PUTTING OUT FIRE ON WALL

**SHOT 1:**  
 USE ONE WALL  
 REPLACE SINGLE SHEET OF PAPER AS NEEDED FOR MULTIPLE TAKES

**FOR SHOT 2:**  
 USE THREE WALLS  
 EACH WALL CAN BE USED FOR ONE TAKE (THREE TAKES TOTAL)

**FOR SHOT 3:**  
 ANY OF THE WALLS USED IN SHOT 2 CAN BE LIT ON FIRE AGAIN FOR THE ACTORS TO PUT OUT, MULTIPLE TAKES



**NOTES:**

**MAKE SAMPLE ASAP**

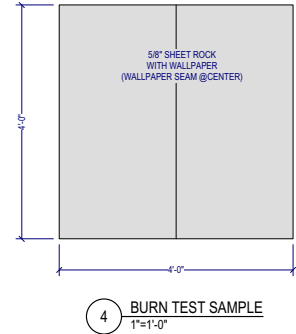
**PAD**  
 -16x10' PAD OF DOUBLE LAYER HARDIEBACKER AS PER SFX

**WALLS**  
 -MAKE THREE (3) 16'W x 8'H WALLS ON WAGONS  
 -MAKE ONE (1) 4' x 8' RETURN WALL WITH DOOR TO MATCH LOCATION  
 -FIRE-TREATED LUMBER FRAMING,  
 5/8" SHEETROCK OVER 1/2" HARDIEBACKER FACING AS PER SFX.  
 SFX TO SEAM HARDIEBACKER BEFORE SHEETROCK INSTALL

**CEILING**  
 -MAKE ONE (1) 6' x 16' CEILING PIECE, HANG FROM GRID ON MOTORS  
 -FIRE-TREATED LUMBER FRAMING,  
 5/8" SHEET ROCK OVER 1/4" HARDIEBACKER  
 (HARDIEBACKER TO BE PRE-TREATED BY SFX)  
 -SECOND SKIN PREPPED FOR RESET IF NEEDED

FURNITURE TO MATCH LOCATION AS PER SET DEC

SFX TO PLACE FLAME BARS AS NEEDED, ADD HARDIEBACKER TO TOP FURNITURE IF NEEDED.



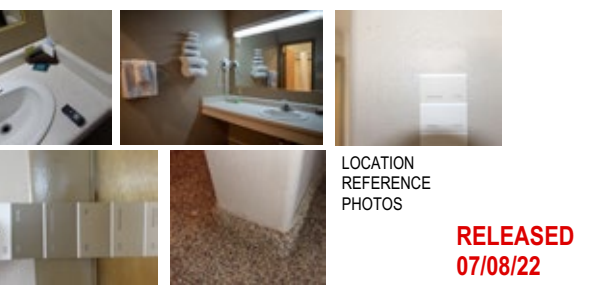
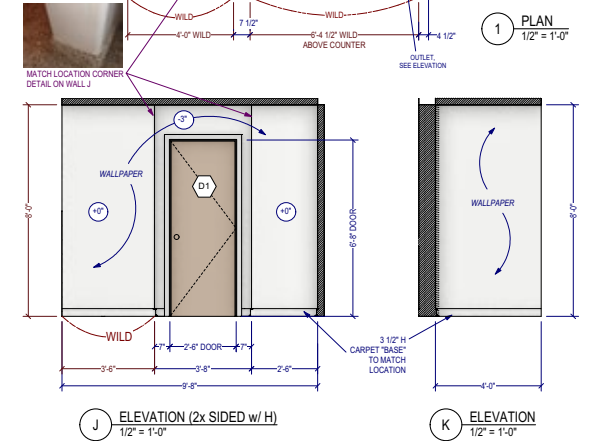
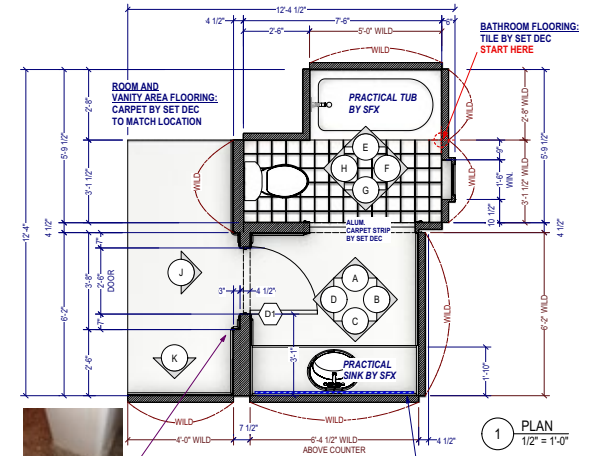
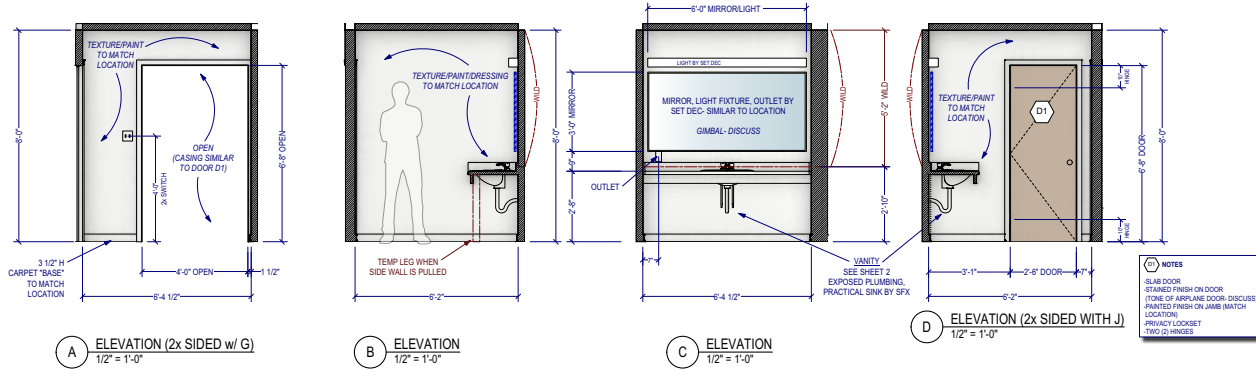
1 BURN WALL SCHEMATIC NOT TO SCALE

RELEASED 07/12/22

<b>RETREAT</b>		INT SUNDOWN MOTEL - BURN WALL	REV: 01	DATE: 07/12/22
PROJECT NAME	OVERALL	SCALE	AS NOTED	303
LOCATION	STAGE 2	REVISED BY	BO	1
DATE	07/12/22	APPROVED BY		

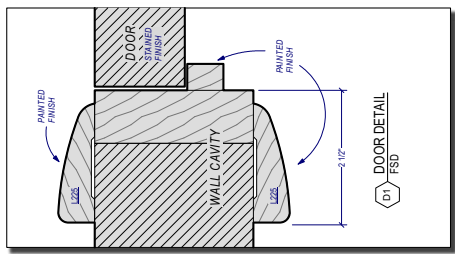
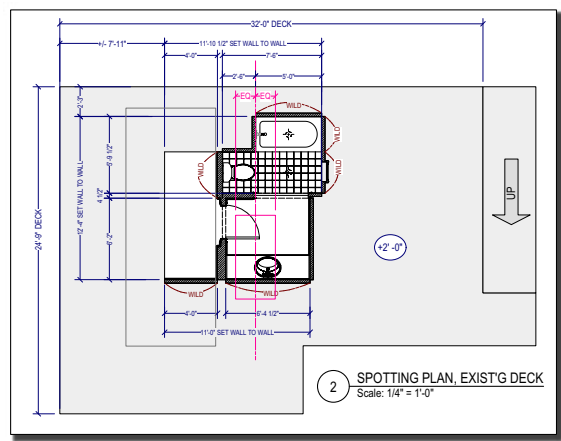
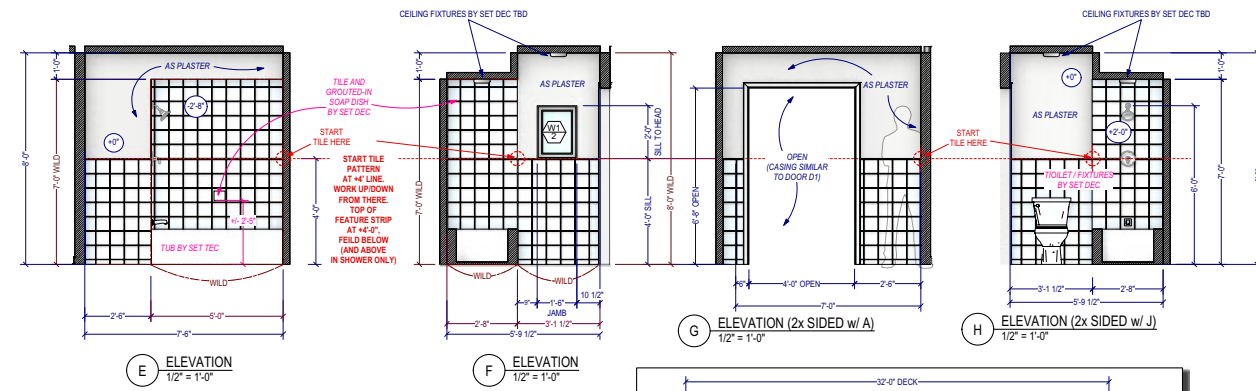


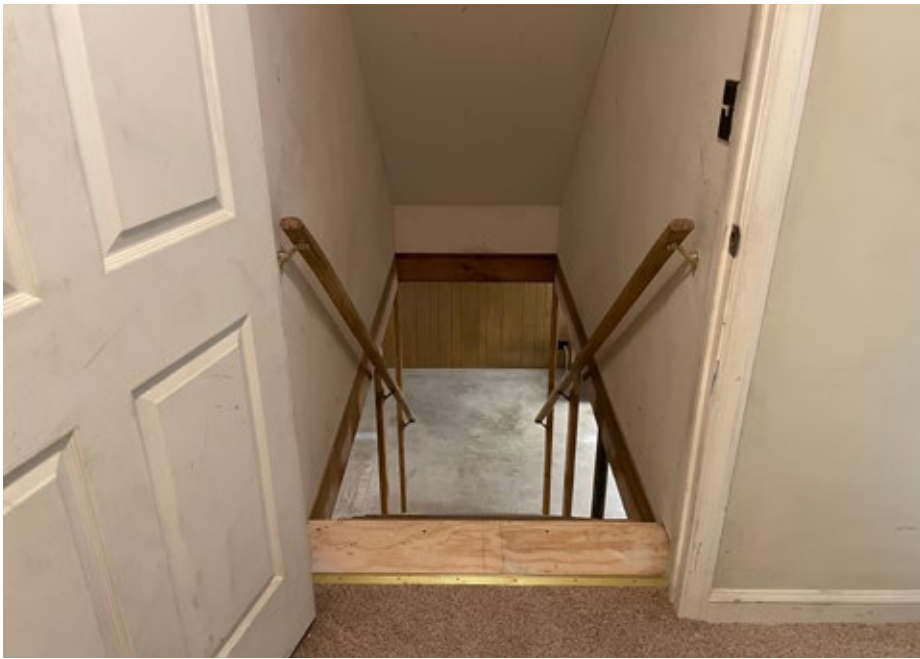
Whispering Sands Motel – Nevada • Bathroom



<b>PROJECT NAME</b>	INT SUNDOWN MOTEL- BATHROOM	<b>DATE</b>	07/08/22
<b>CONTRACTOR NAME</b>	PLAN, ELEVATION, DOOR DETAIL	<b>SCALE</b>	AS NOTED
<b>PROJECT NO.</b>	301	<b>REVISION</b>	BO
<b>STAGE</b>	STAGE 1	<b>PROJECT</b>	RETIRED
<b>DATE</b>	07/08/22	<b>PROJECT</b>	RETIRED
<b>LOGO</b>	<b>PROJECT</b>	<b>PROJECT</b>	<b>PROJECT</b>

**RETIRED**





Suburban Home - Nevada • Location Photos & Stage Build







Suburban Home - Nevada









DARRY LOOKING DOWN STAIRCASE



DARRY IN PAINT



DARRY FROM BEHIND



DARRY PULLED



BILL TURNS LIGHT ON



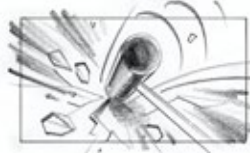
BILL TESTS GOGGLES TO DARRY



DARRY PUTTING GOGGLES ON



BILL PUTTING BANDANA GOGGLES ON



DARRY AND BILL LYING IN THE DEBRIS



DARRY AND BILL FIND RELIEF



DARRY SITS UP



DARRY LIFTING UP/ HEARS SOUND



DARRY LIFTING UP/ HEARS SOUND



DARRY SEE OF BILL SLEEPING



DARRY LOOKING AROUND



LIGHT HITTING STAIRS



DARRY HITS BILL

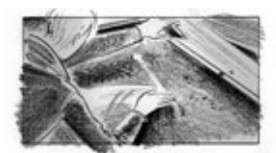


DARRY HITS

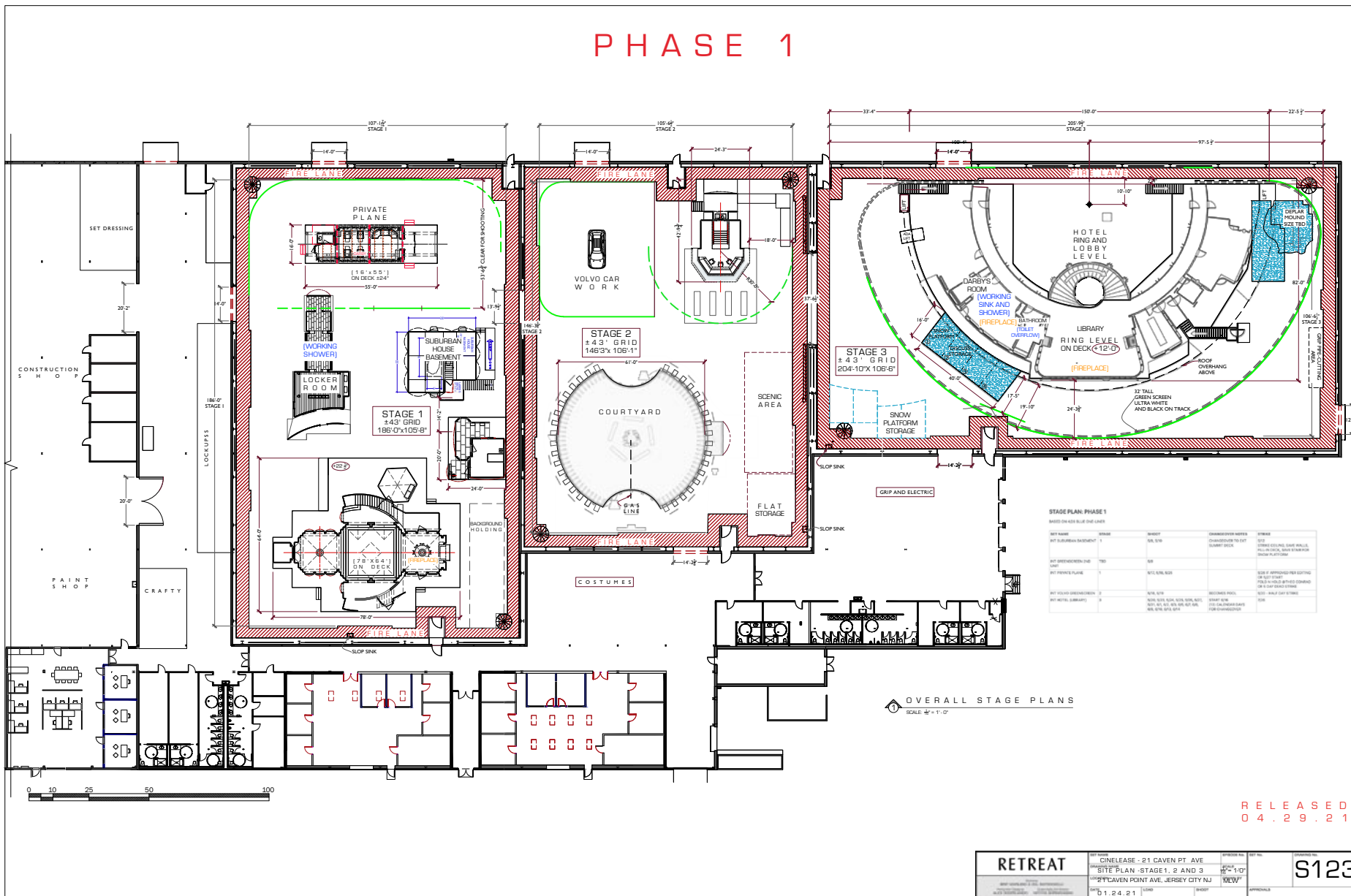
DARRY HITS



BILL JOINS DARRY

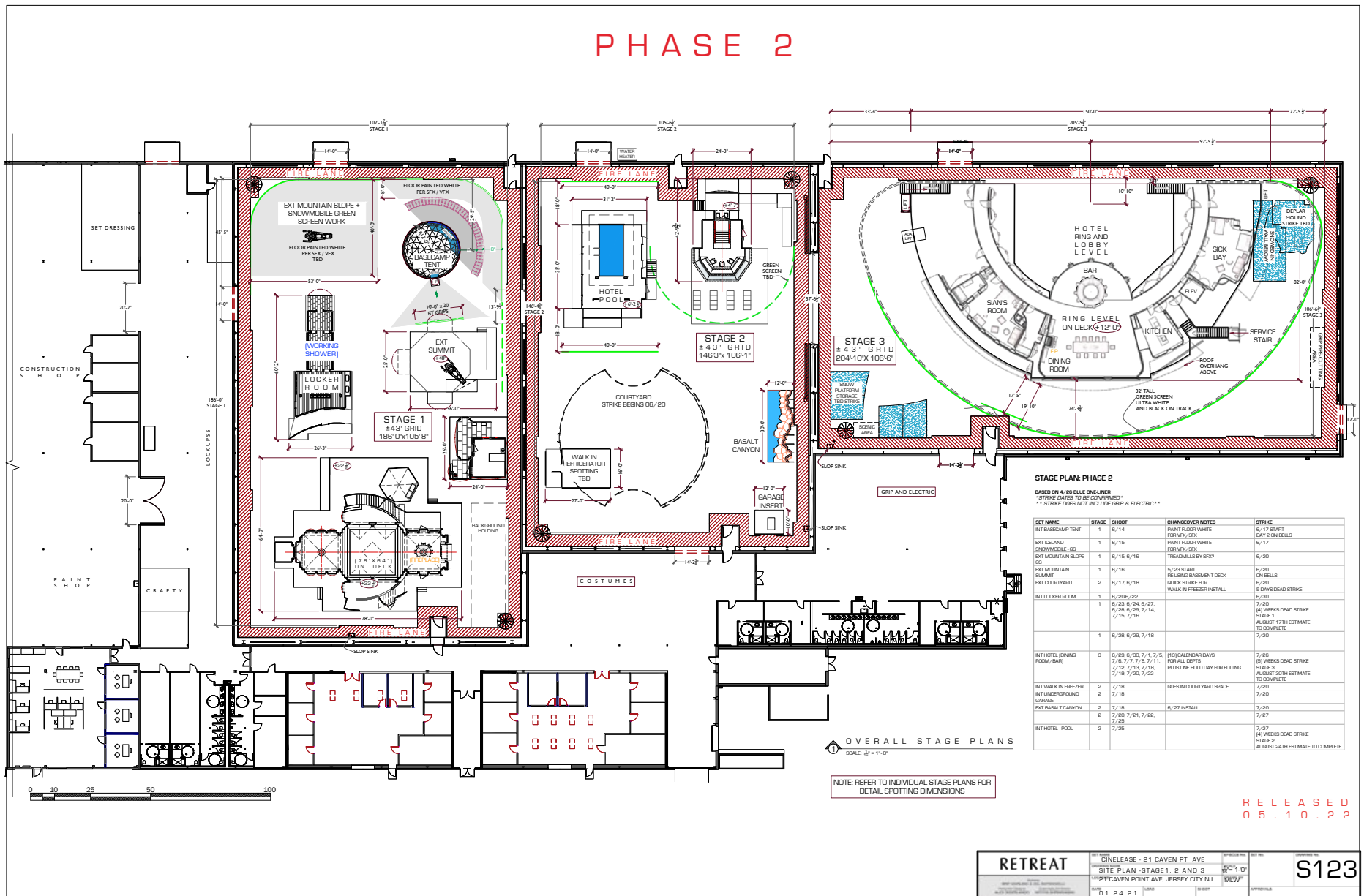


# PHASE 1



Stage Plan - Phase 1

# PHASE 2



**STAGE PLAN: PHASE 2**

BASED ON 4 / 28 BLUE ONE LINER  
 \* STRIKE DATES TO BE CONFIRMED \*\* STRIKE DOES NOT INCLUDE GRIP & ELECTRIC \*\*

SET NAME	STAGE	SHOTS	CHANGES/NOTES	STRIKE
INT BASECAMP TENT	1	6/14	PAINT FLOOR WHITE FOR VFX/SPFX	6/17 START DAY 2 ON BELLS
EXT KIDLAND SNOWMOBILE - OB	1	6/15	PAINT FLOOR WHITE FOR VFX/SPFX	6/17
EXT MOUNTAIN SLOPE - OB	1	6/15, 6/16	TREADMILLS BY SPFX	6/20
EXT MOUNTAIN SUMMIT	1	6/16	5/23 START TRUSS ASSEMBLY DECK	6/20 ON BELLS
EXT COURTYARD	2	6/17, 6/18	QUICK STRIKE FOR WALK IN FREEZER INSTALL	6/20
INT LOCKER ROOM	1	6/20/22, 6/26, 6/29, 7/14, 7/15, 7/16		6/30 (4) WEEKS DEAD STRIKE STRIKE AUGUST 17TH ESTIMATE TO COMPLETE
INT HOTEL DINING ROOM (BAR)	3	6/29, 6/30, 7/1, 7/5, 7/8, 7/9, 7/12, 7/13, 7/18, 7/19, 7/20, 7/22	(13) CALENDAR DAYS FOR ALL DATES PLUS ONE HOLD DAY FOR EDITING	7/26 (5) WEEKS DEAD STRIKE STRIKE AUGUST 30TH ESTIMATE TO COMPLETE
INT WALK IN FREEZER	2	7/18	DOOR IN COURTYARD SPACE	7/20
INT UNDERGROUND GARAGE	2	7/18		7/20
EXT BASALT CANYON	2	7/18	6/27 INSTALL	7/20
INT HOTEL POOL	2	7/25		7/27 (4) WEEKS DEAD STRIKE STRIKE AUGUST 24TH ESTIMATE TO COMPLETE

RELEASED  
05.10.22

<b>RETREAT</b>		© RELEASE - 21 CAVEN PT. AVE.	SPOTTING NO.	REV.	DATE
		SITE PLAN - STAGE 1, 2 AND 3	15"	1.0"	
		1121 CAVEN POINT AVE, JERSEY CITY NJ	VIEW		
DATE	01.24.21	USER	GROUP	APPROVAL	
					<b>S123</b>

**PRODUCTION DESIGNER**

Alex DiGerlando

**SUPERVISING ART DIRECTOR**

Nithya Shrinivasan

**ART DIRECTORS**

Jonathan Mosca  
Marie Wagner  
Atli Geir Grétarsson

**SET DECORATOR**

Lydia Marks

**ASSISTANT ART DIRECTORS**

Blythe Quinlan  
Michael Auszura  
Abby J. Smith  
Molly Mikula  
Katya Blumenberg  
Lauren Rockman

**GRAPHIC DESIGNERS**

Dawn Masi  
Julie Schwartz  
Eddie Ioffreda

**SCENIC ARTISTS**

Elizabeth Linn  
Lisa Kennedy  
Alison Gilham  
Miguel DeJesus  
Robert Barnett  
Ales Brodsky  
Vitaly Timergaleev  
Elizabeth Schurra

**CONCEPT ILLUSTRATORS**

Eric Fehberg  
Alex Innocenti

**CONCEPT ARTIST**

Steven Brower

**STORYBOARD ARTIST**

Grant Shaffer