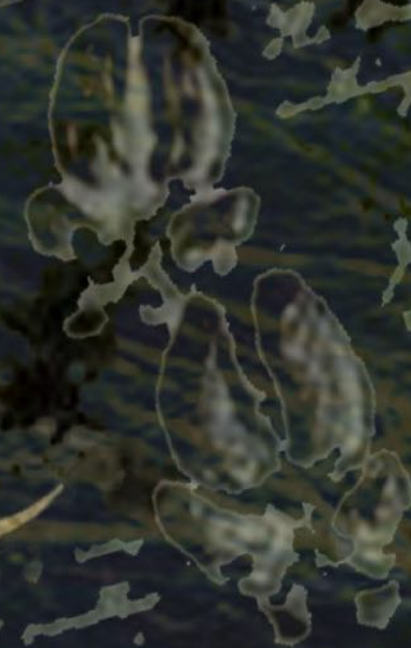


THE
SPIDERWICK
CHRONICLES



OUR TOWN

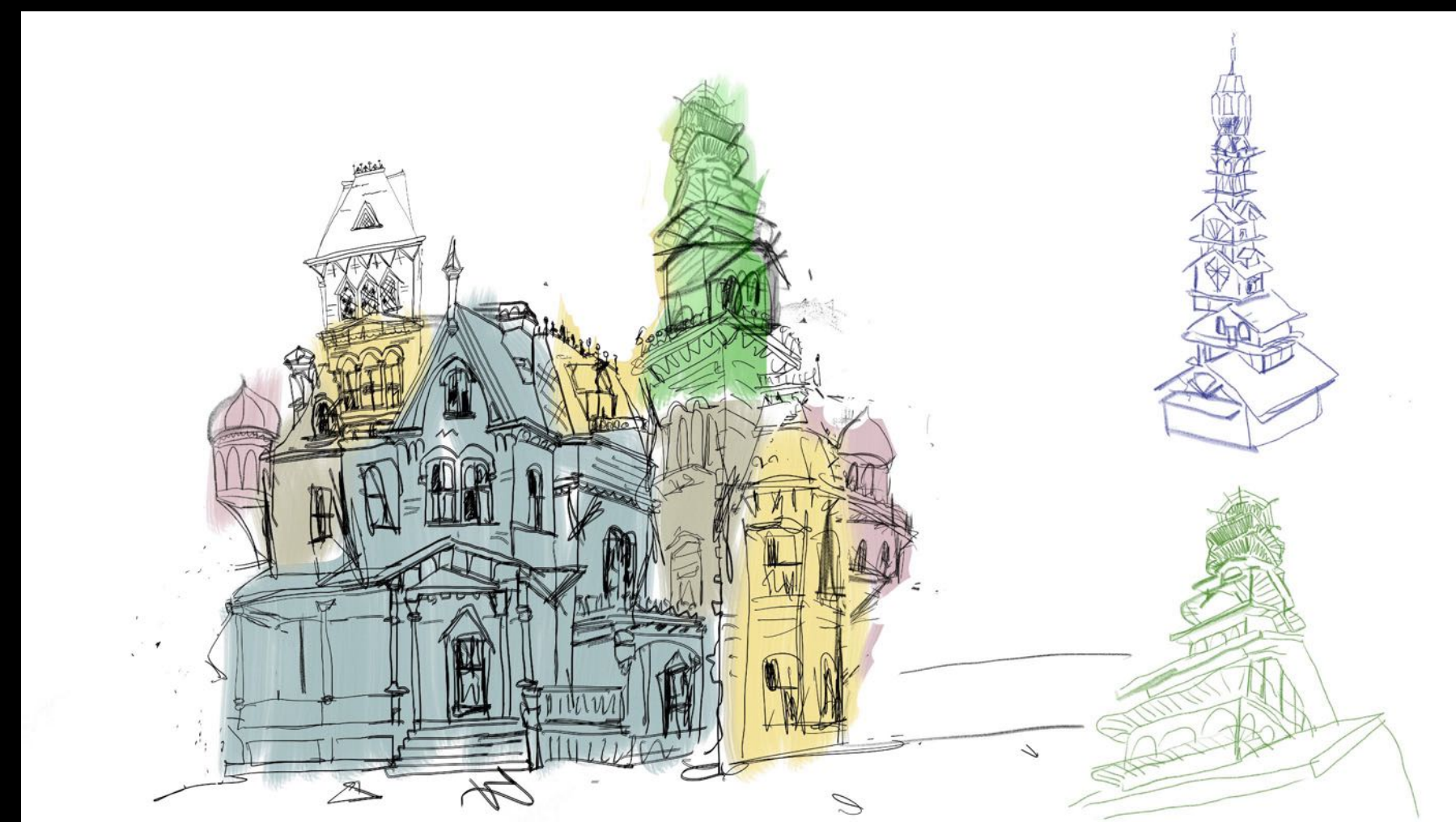
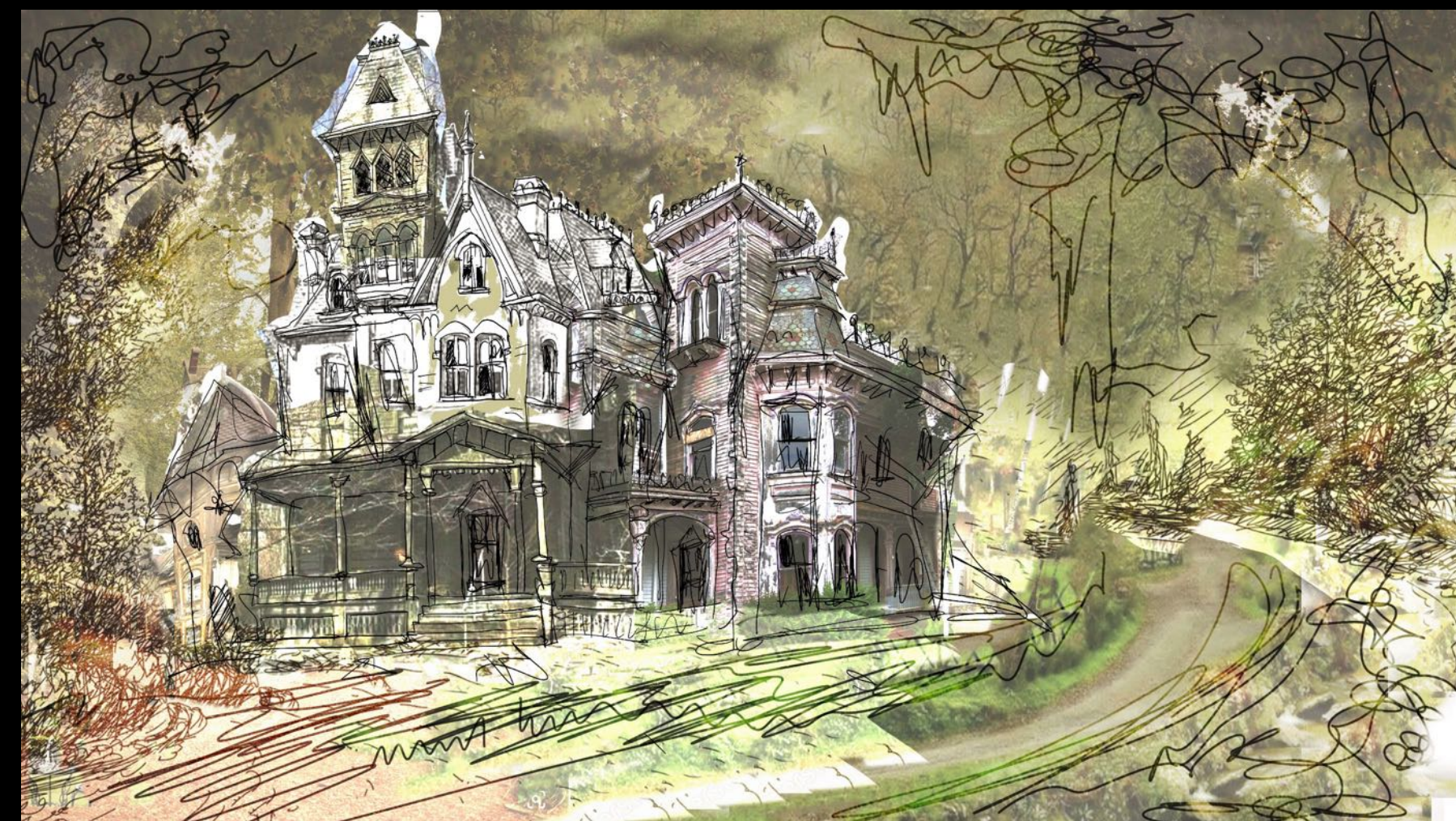
SPIDERWICK HOUSE



A DARK FAIRY TALE

"IT'S A SHACK," MALLORY SAID, GETTING OUT OF THE STATION WAGON. IT WASN'T REALLY, THOUGH. IT WAS MORE LIKE A DOZEN SHACKS HAD BEEN PILED ON TOP OF ONE ANOTHER. THERE WERE SEVERAL CHIMNEYS, AND THE WHOLE THING WAS TOPPED OFF BY A STRIP OF IRON FENCE SITTING ON THE ROOF LIKE A PARTICULARLY GARISH HAT.

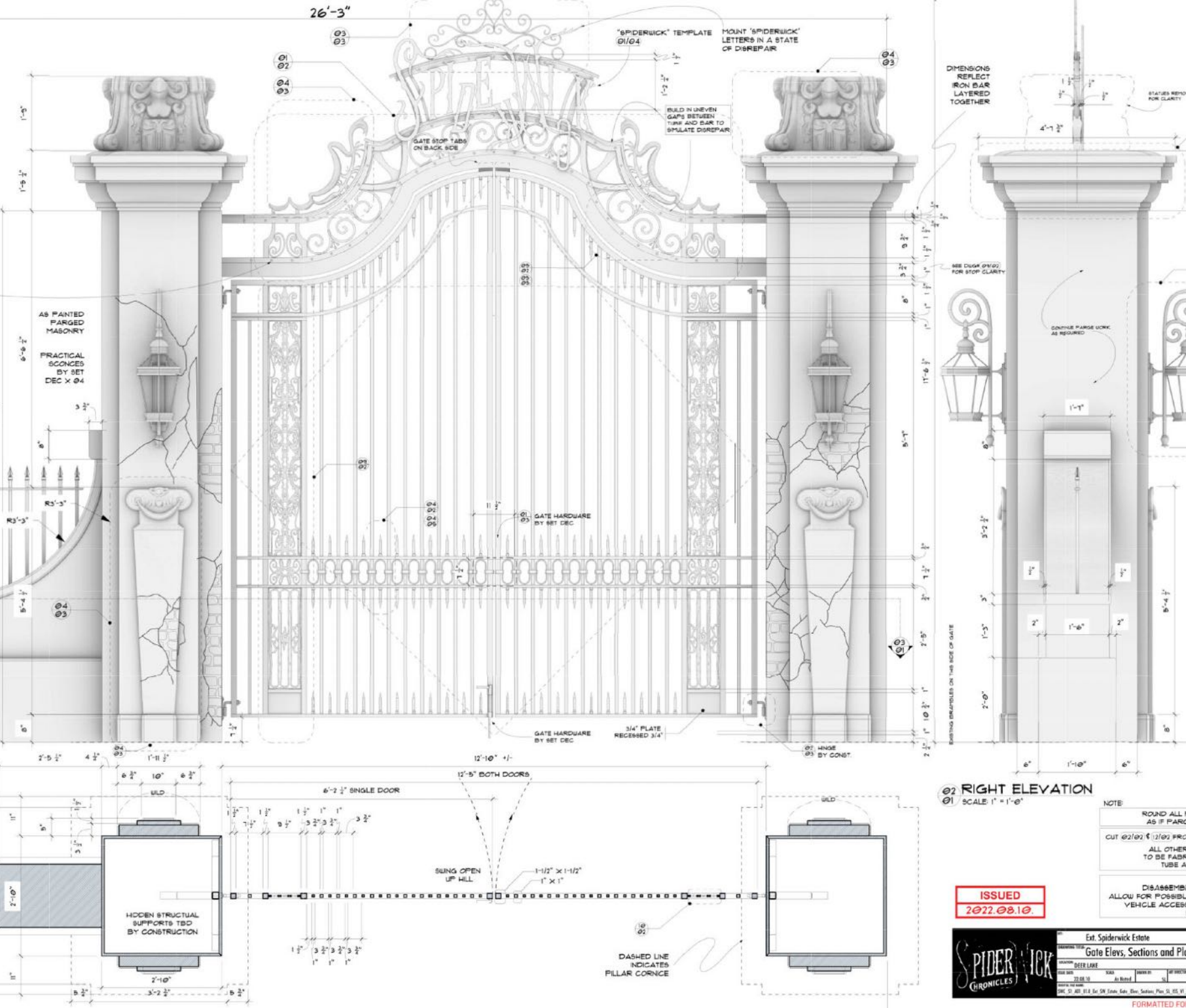
"IT'S NOT SO BAD," THEIR MOTHER SAID, WITH A SMILE THAT LOOKED ONLY SLIGHTLY FORCED. "IT'S VICTORIAN."



EXT. HOUSE - ORIGINAL SKETCH BY E. ALBANESE



THE MANSION
LOOKS LIKE IT WAS
PUT TOGETHER
WITH PIECES
FROM OTHER HOUSES
AND COLLAPSING IN
ON EACH OTHER
AS IF DEFYING
THE LAWS OF PHYSICS



THE GATE - BUILT



THE GATE - SHOT



THE GATE - SHOT



ILLUSTRATION BY S. PANT



ILLUSTRATION BY S. PANT

EVOLUTION OF THE SPIDERWICK ESTATE (1880-2023)



REFERENCE

OUR HOUSE IS A CHARACTER AND IT EVOLVED IN TIME WITH AND THANKS TO OUR FAMILY AND THEIR CREATURE FRIENDS

THE ATRIUM AND THE LIBRARY WINDOWS
DECORATED WITH COLORFUL GLASS MOSAICS, THE TILES CONTAIN SYMBOLISM AND HIDDEN MEANINGS ONLY THE MOST DISCERNING CAN SEE.
THE CLAY TILES OF THE ROOF WERE HANDMADE BY MAGICAL CREATURES.

THE OBSERVATION TOWER
HERE ARTHUR COULD CONDUCT HIS AERIAL OBSERVATIONS UNSEEN. A BRIDGE CONNECTS THE TOWER TO THE SURROUNDING TREES AND ALL THE FOREST CREATURES WITHIN. THE TOWER CONTAINS BUILT-IN TOOLS SUCH AS CONVENTIONAL BINOCULARS, AS WELL AS MAGICAL LENSES THAT REVEAL THE UNSEEN. OVER TIME, A FRIENDLY PHOENIX BUILT HER NEST AT ITS PEAK.

THE RIGHT DOME
THIS DOME IS DECORATED WITH ELEMENTS THAT ATTRACT BENEVOLENT CREATURES AND PROTECT THE HOUSE FROM EVIL ONES. THIS DOME INCLUDES MAGICAL CHIMES CALIBRATED FOR SPECIFIC CREATURES.



Spiderwick Mansion stand alone illustration | 06 16 2023

Spiderwick Mansion stand alone illustration | 06 16 2023

Spiderwick Mansion stand alone illustration | 06 16 2023

HOUSE AS BOUGHT, BEFORE THE ADDITIONS



Spiderwick Mansion - Daytime concept illustration - color V1 | 06 16 2023

Spiderwick Mansion - Daytime concept illustration - color V1 | 06 16 2023

Spiderwick Mansion - Daytime concept illustration - color V1 | 06 16 2023

AFTER THE FAIRIES AND ARTHUR ADDED ROOMS AND ENVIRONMENTS

SPIDERWICK ESTATE EXTERIORS



BUILT:

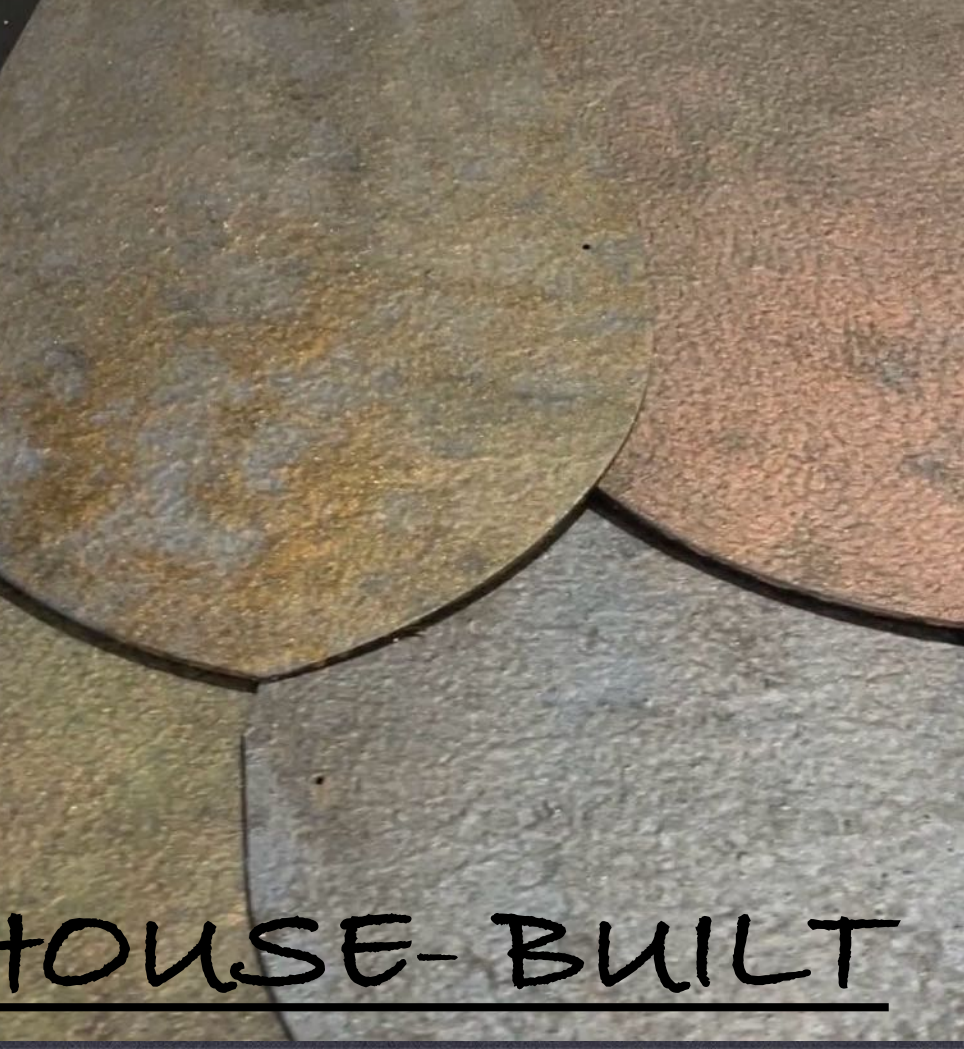
THE FRONT PORCH, GATE, GARDENS,
BACK PORCH, GAZEBO, KEY STATUES

DINING ROOM WINDOWS WALL

SAMPLE OF ALL THE MATERIALS FOR VFX SCANNING



GATE SIDE



EXT. HOUSE-BUILT



EXT. HOUSE-BUILT



EXT HOUSE- SHOT



EXT HOUSE- SHOT



EXT HOUSE- SHOT

INTERIORS



FIG. F

*Some seem gentle,
one's name is...*

FIG. I

FIG. J

FIG. K

*I
have
a
little
book
name...*

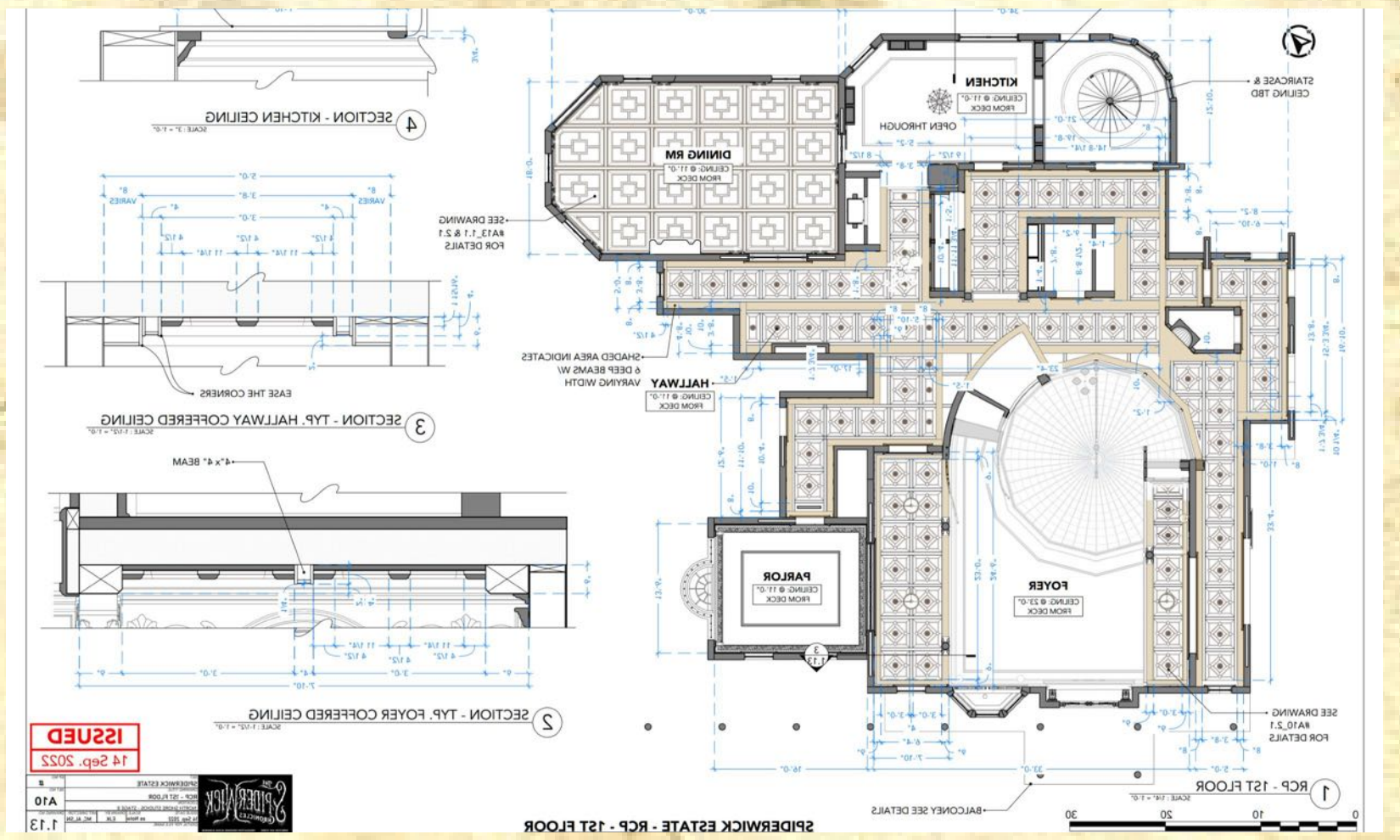
get images
GeoS



First illustration by E. Albanese

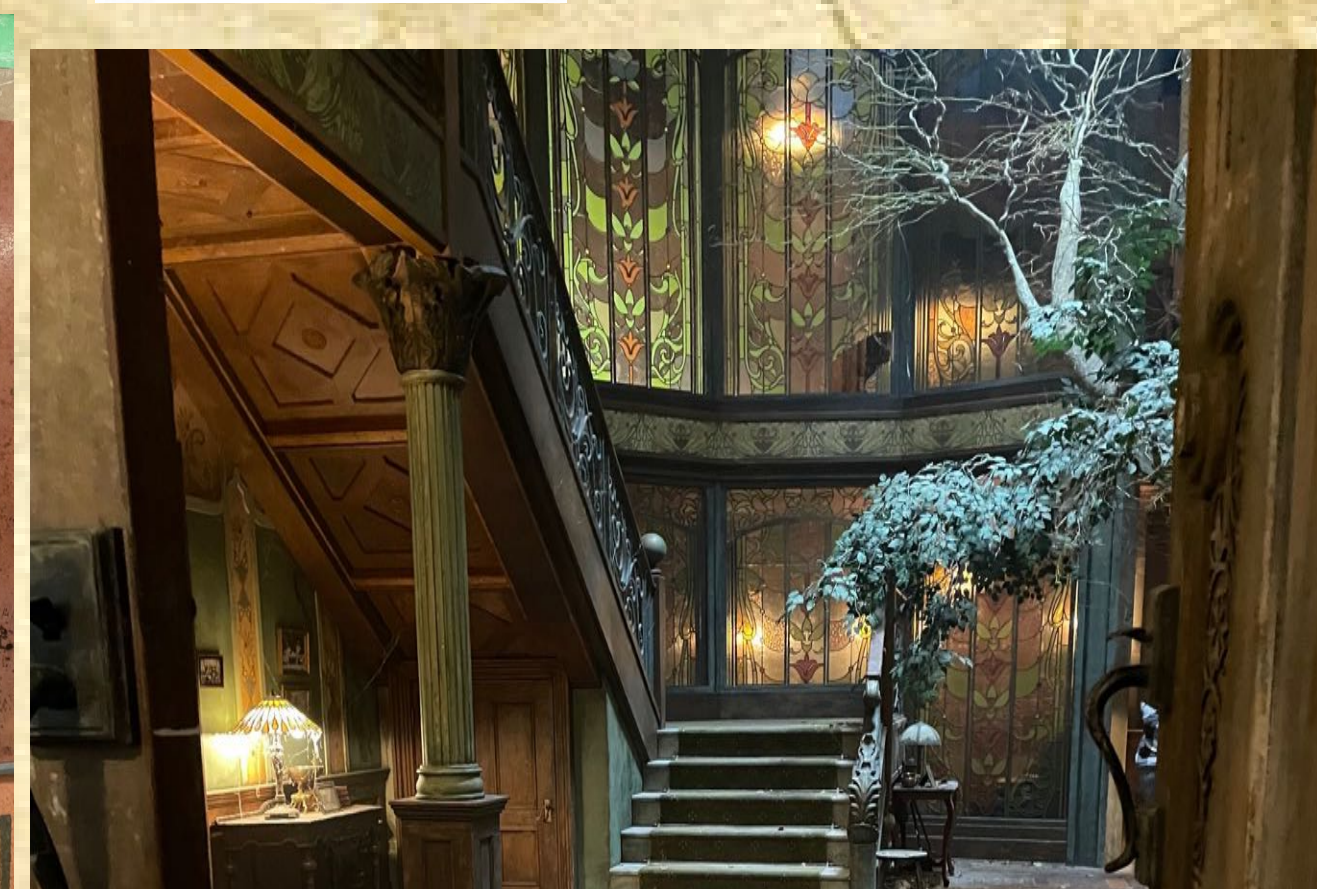
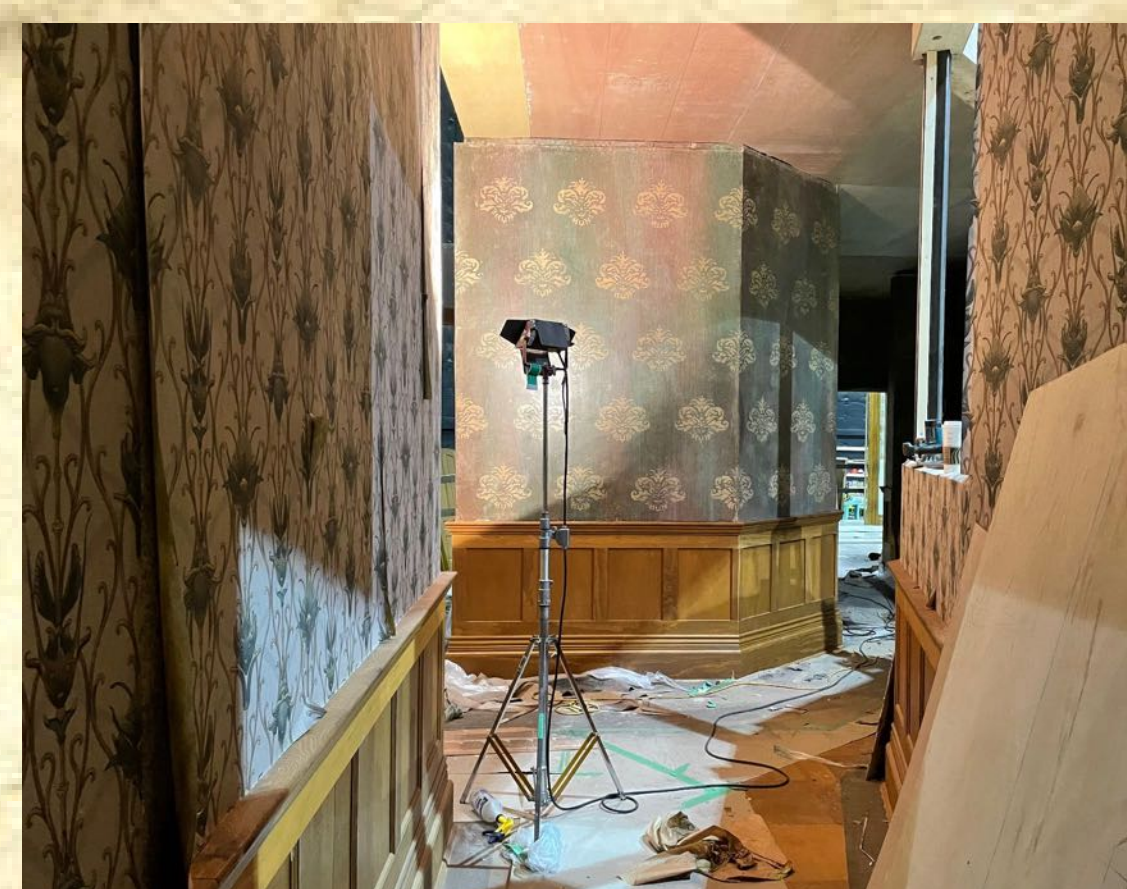
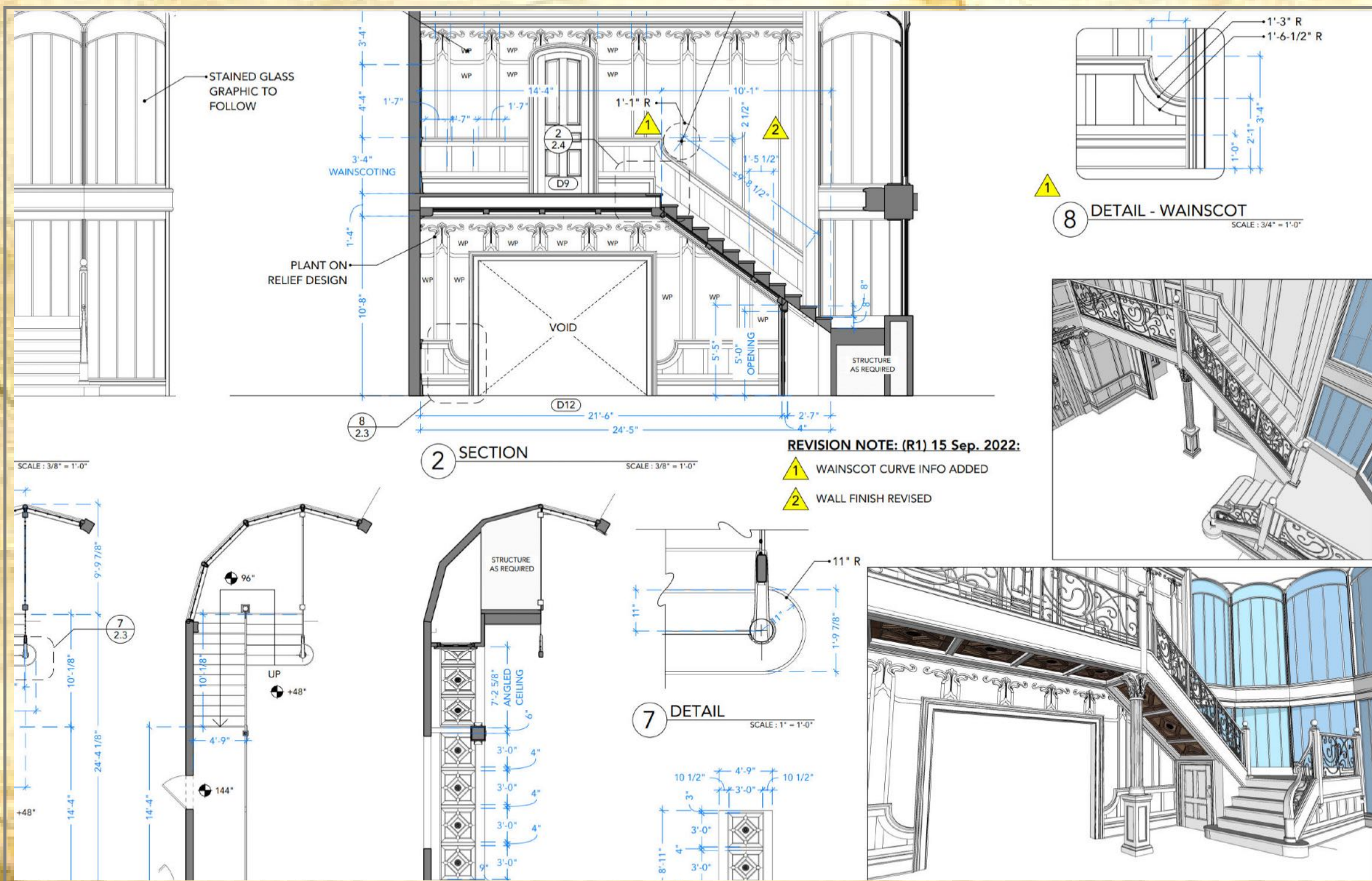
DUST PARTICLES AND
A MANCHINEEL TREE
GROWING IN THE
MIDDLE OF IT. THE
BRANCHES SNAKE UP
TOWARDS THE
WINDOWS TO
HUNGRILY DEVOUR
ANY LIGHT

Illustration by P. Moayedí



INT. FIRST FLOOR AND BALCONY OF THE MANSION - BUILT

CAN YOU SPOT THE LITTLE FAIRIES ON THE HAND MADE TILES?

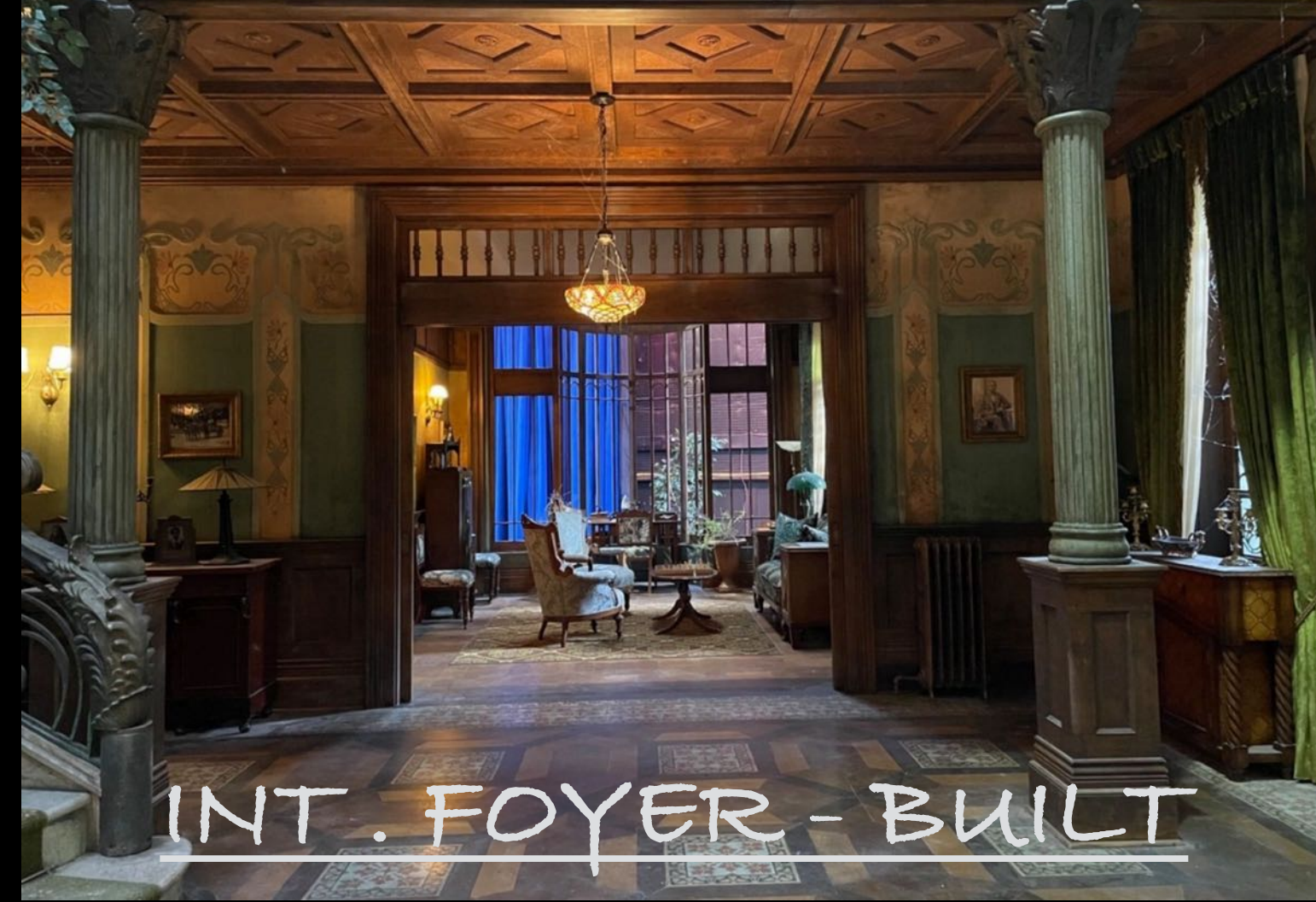


INT. FIRST FLOOR AND BALCONY OF THE MANSION - BUILT

CAN YOU SPOT THE LITTLE FAIRIES ON THE COSTUM WALL PAPER?



INT. FOYER - BUILT







INT. FOYER - SHOT



INT. FOYER - SHOT



INT. FOYER - SHOT



INT. FOYER - SHOT

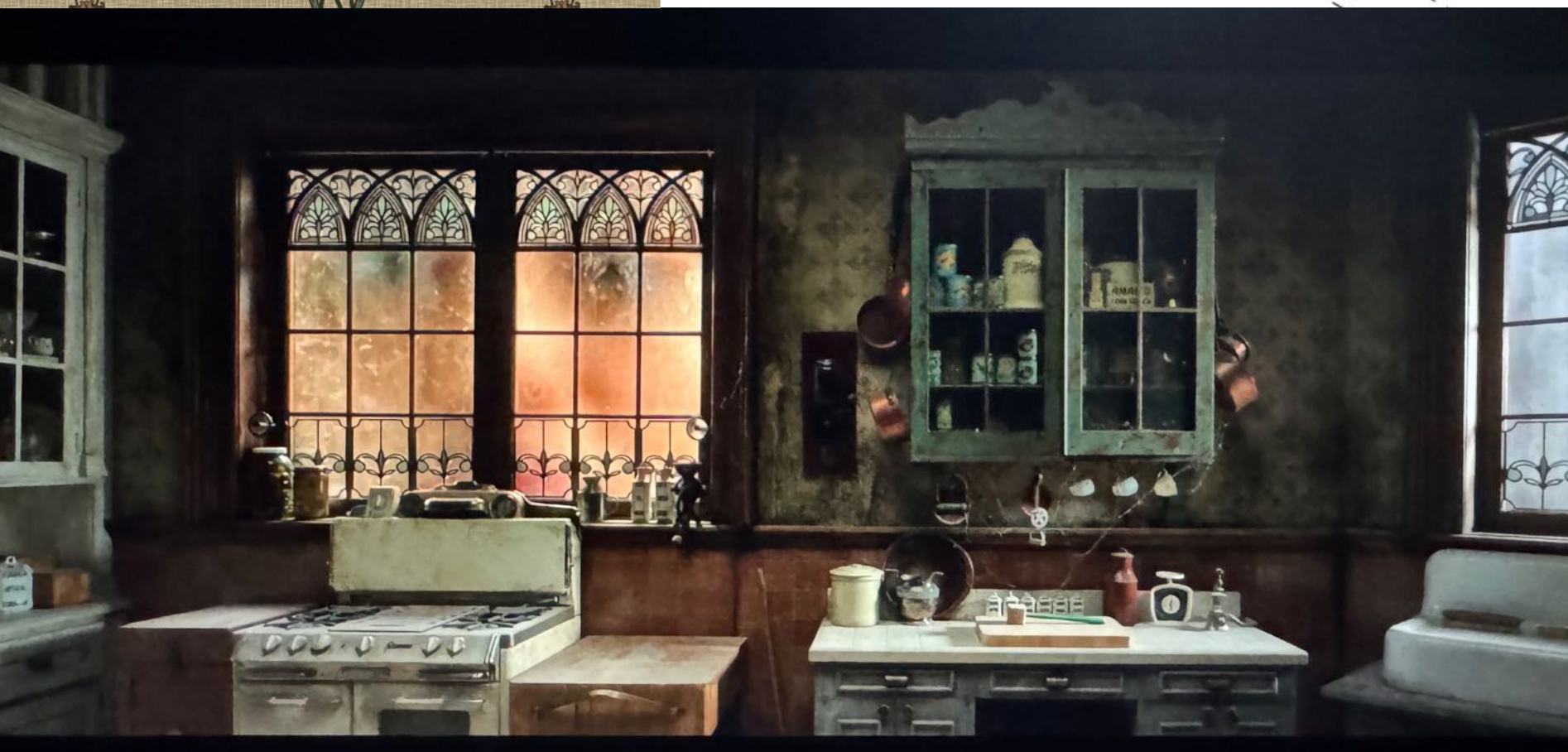
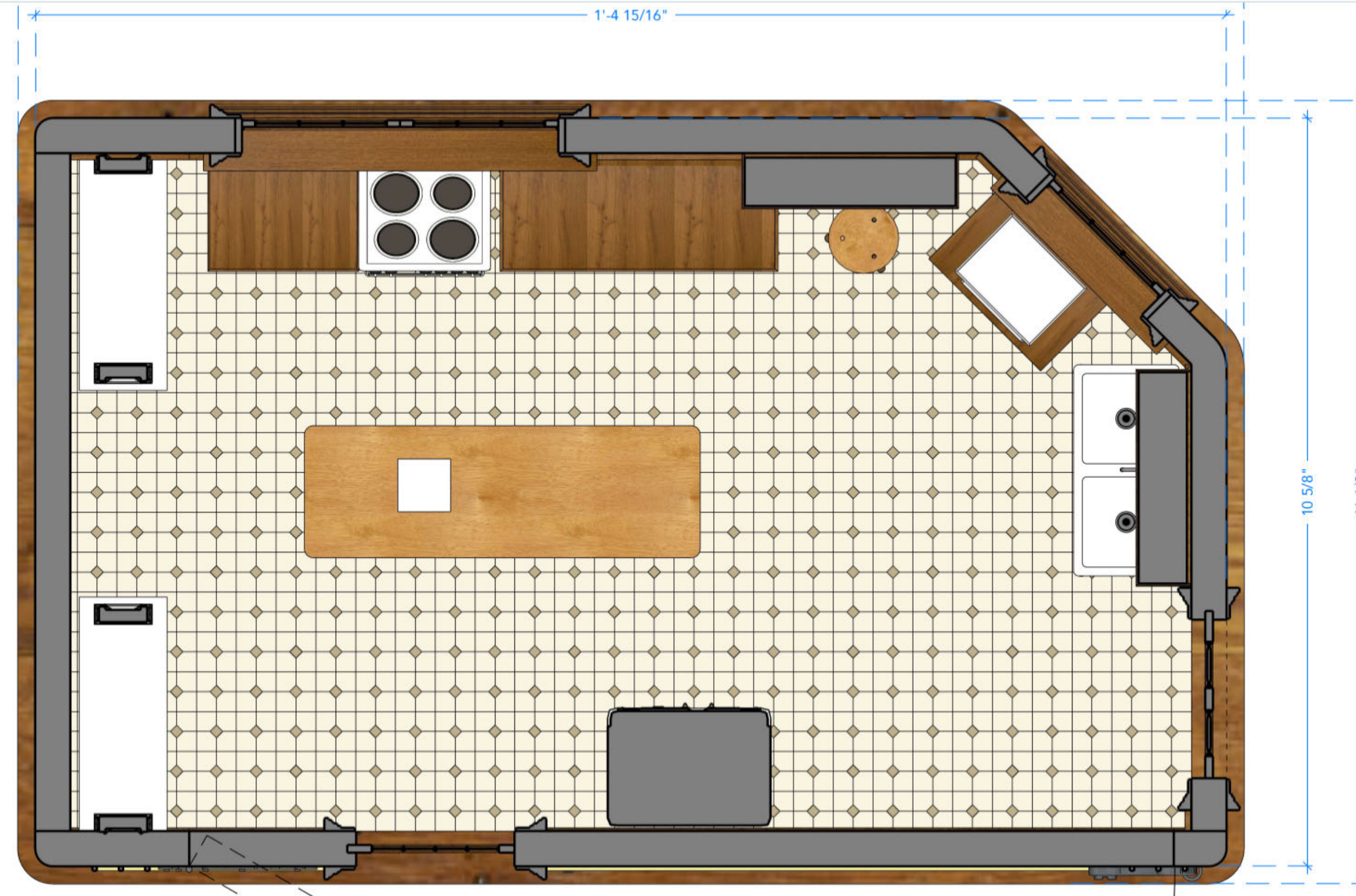


INT. FOYER - SHOT



ILLUSTRATION BY P. MOAYEDI

INT. KITCHEN



2 ISO VIEWS

SCALE: NTS

ISSUED
23 Sep. 2022

KITCHEN MINIATURE

SPIDERWICK ESTATE - KITCHEN - BREAD BOX - PLAN & ISO VIEWS

SPIDERWICK ESTATE
KITCHEN - BREAD BOX - PLAN & ISO VIEWS
AMORT
A11
NORTH SHORE STUDIOS - STAGE 8



INT. KITCHEN - BUILT



INT. KITCHEN - BUILT

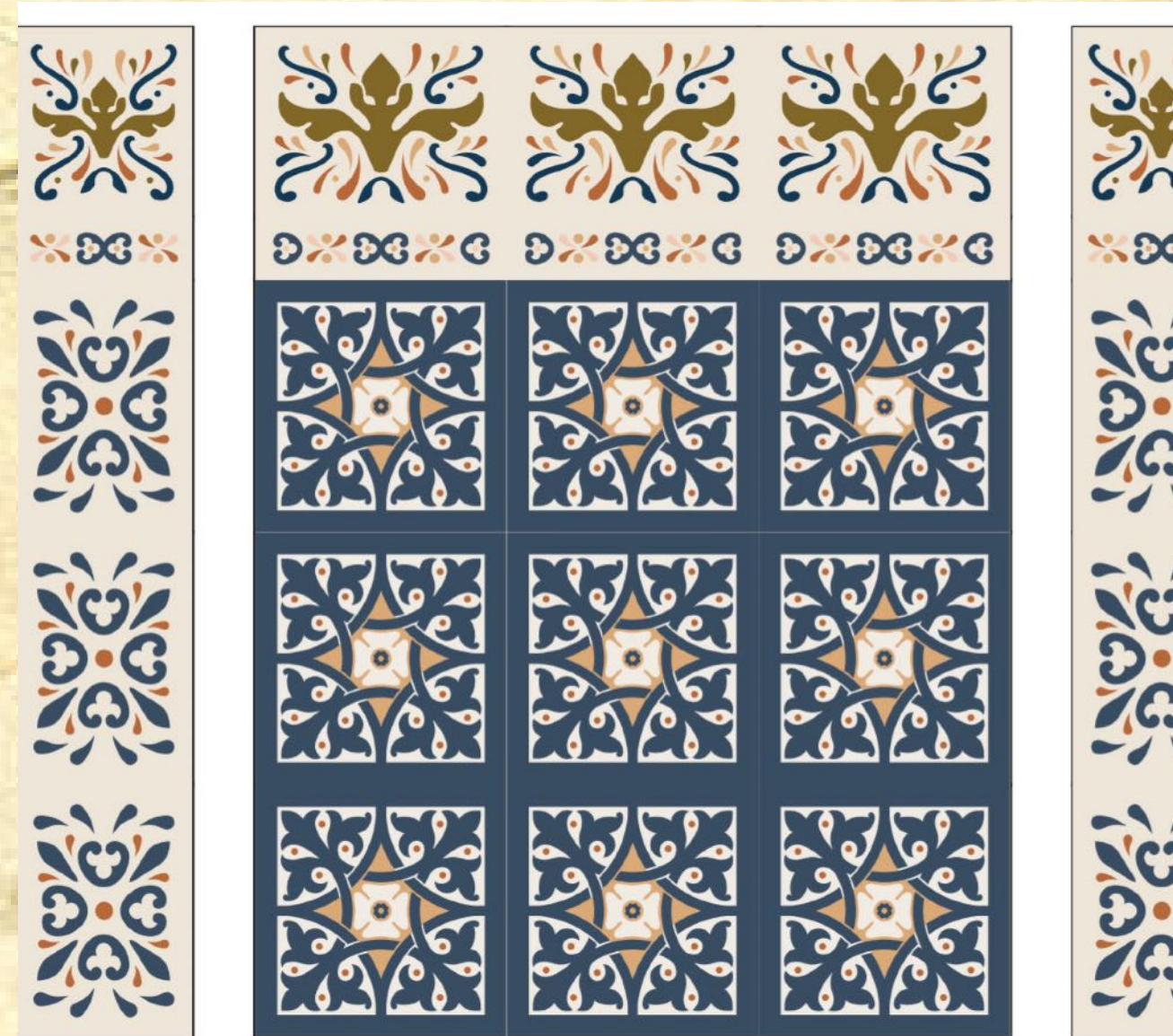


INT. KITCHEN - SHOT



Illustration by P. Moayedi

INT. DINING ROOM



INT. LIVING ROOM- BUILT

AND HERE AND THERE WE FIND MUSHROOMS GROWING ON THE CEILING



INT. DINING ROOM - BUILT





INT. DINING ROOM - BUILT



INT. DINING ROOM - BUILT

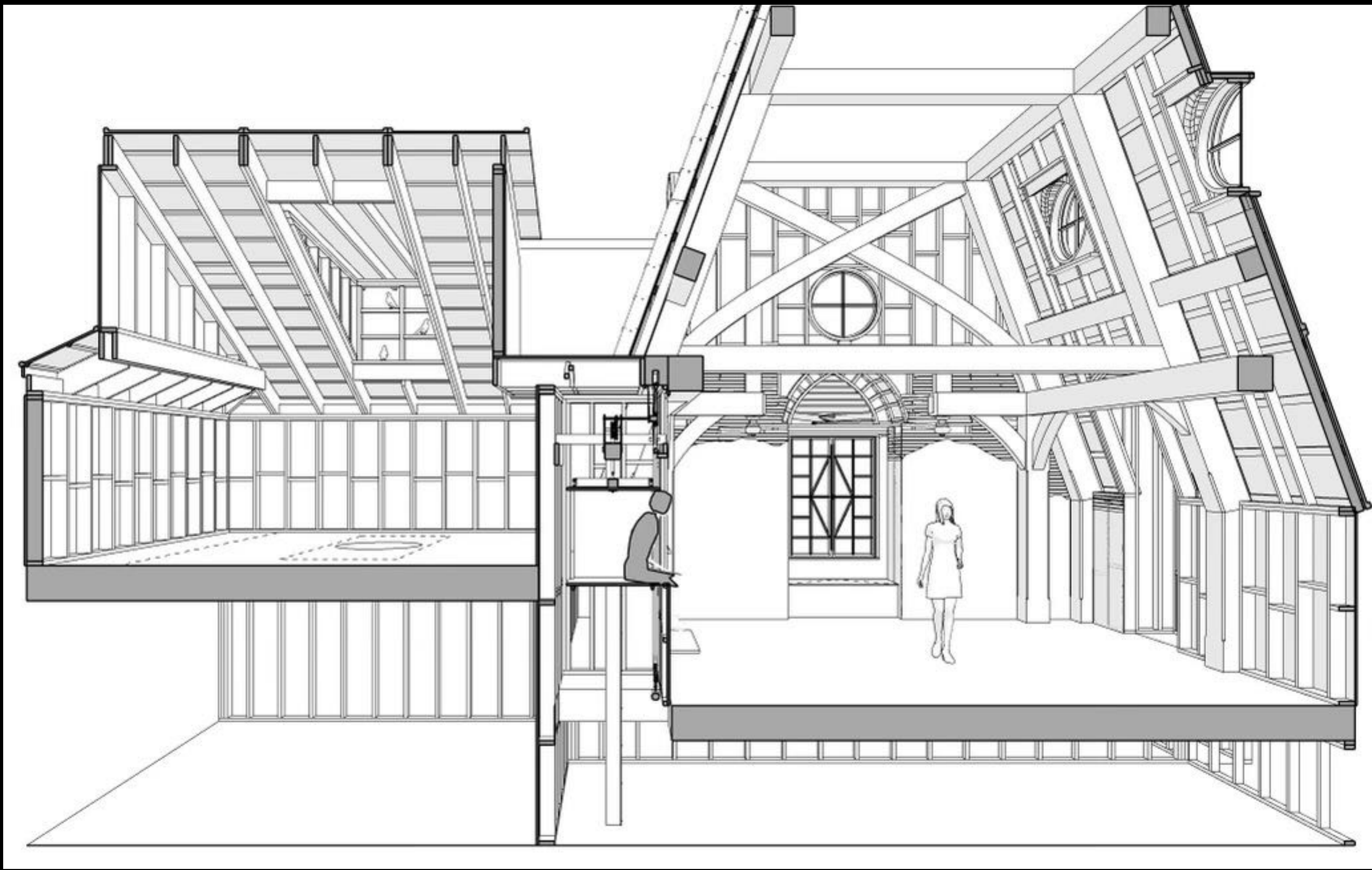


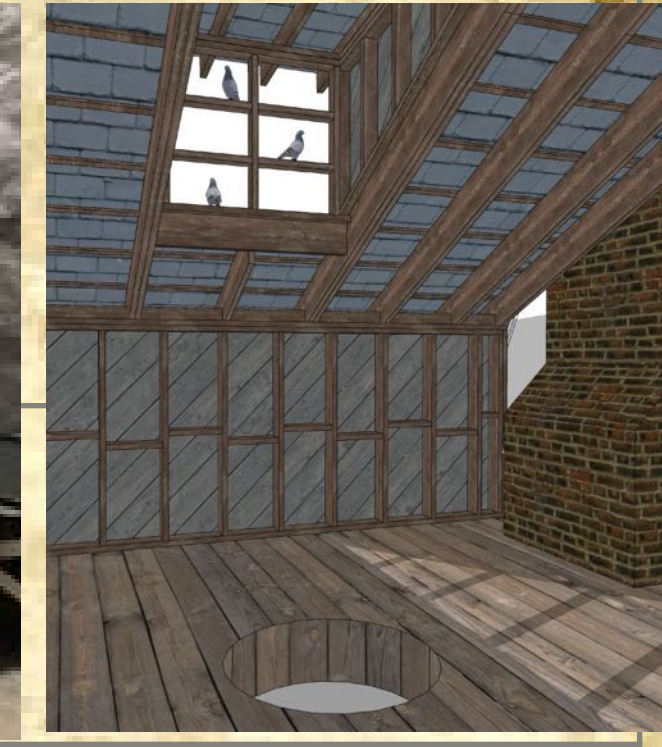
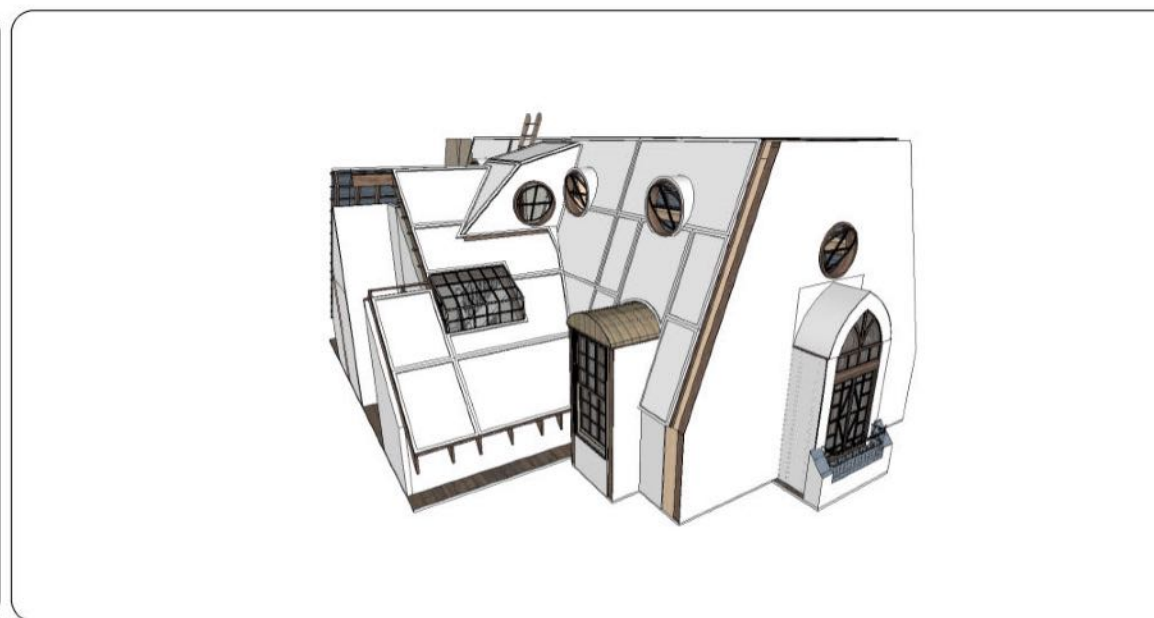
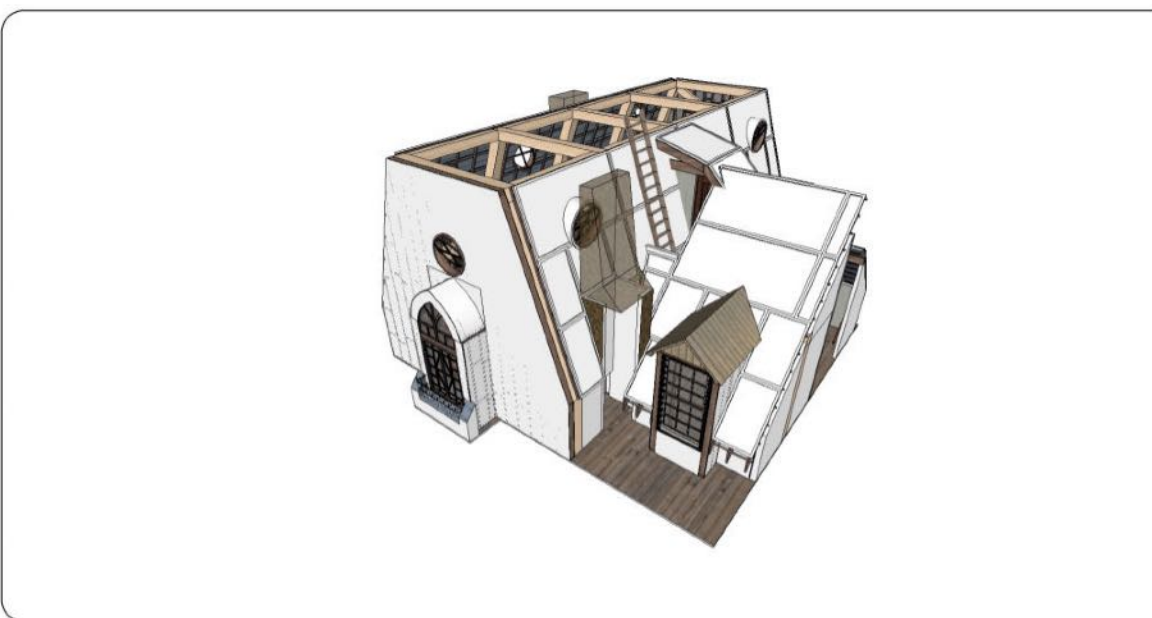
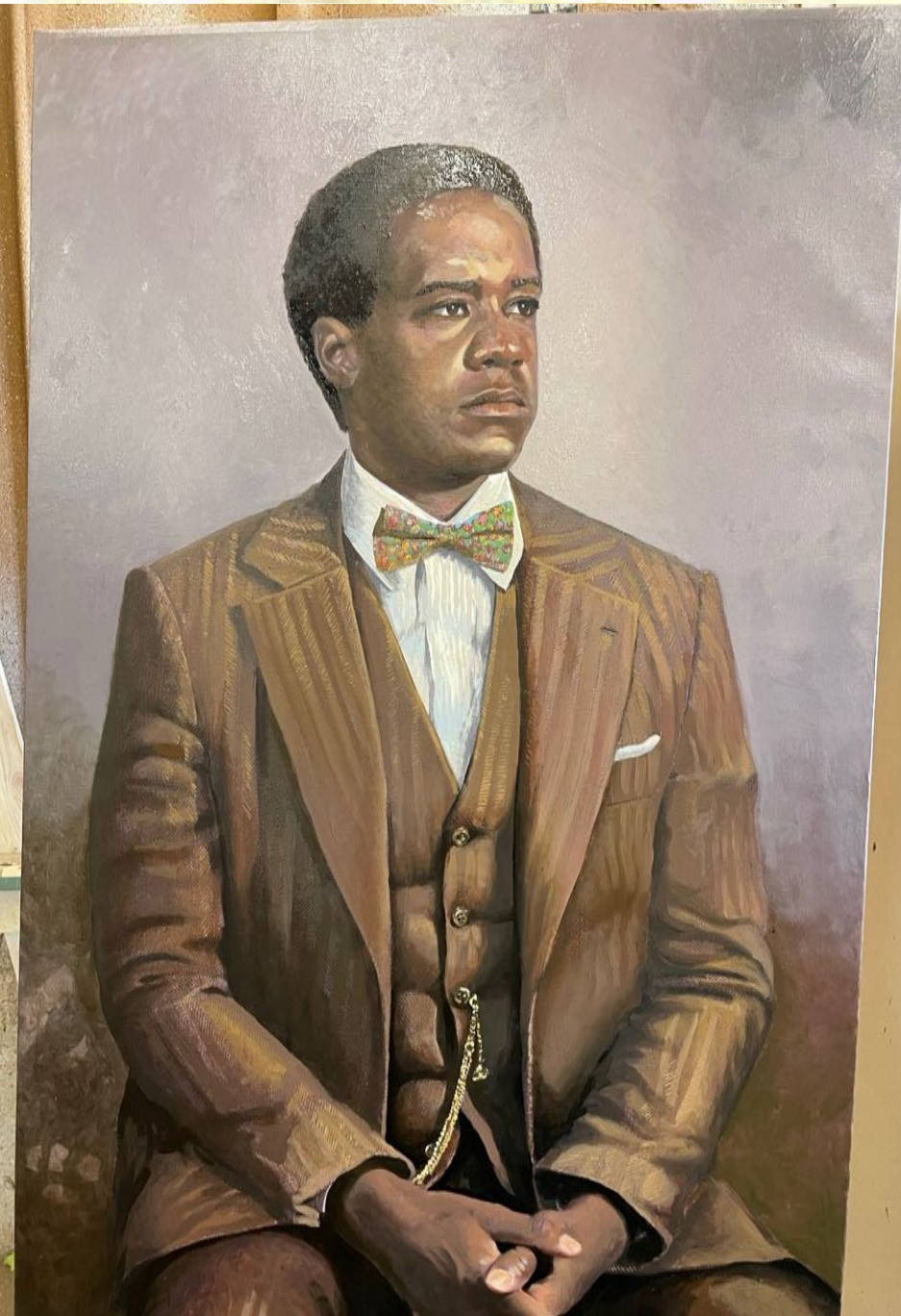
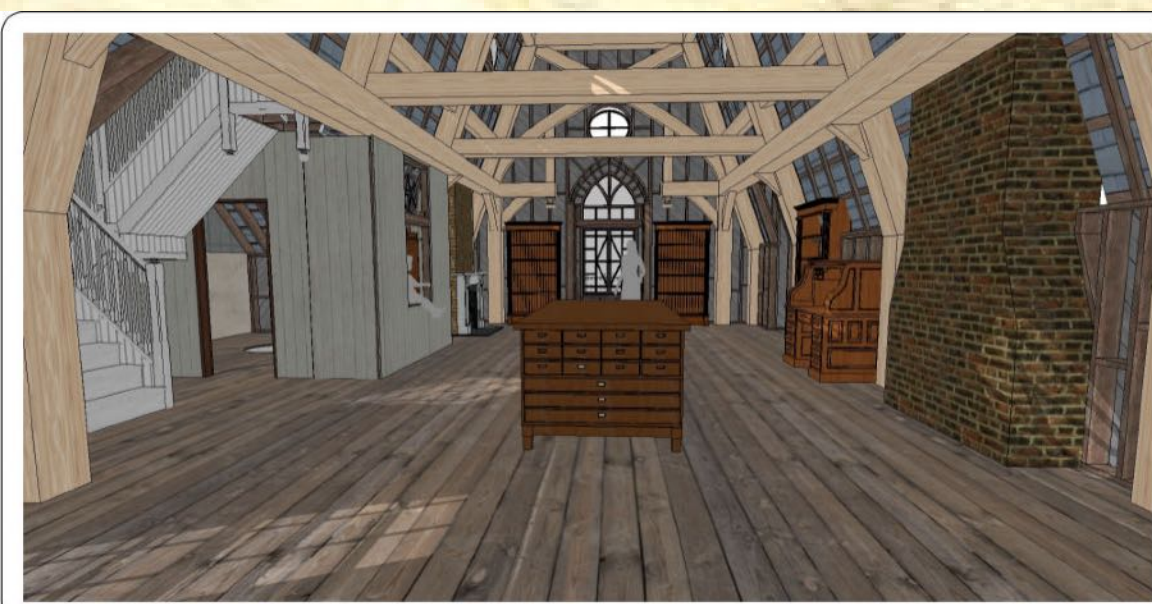


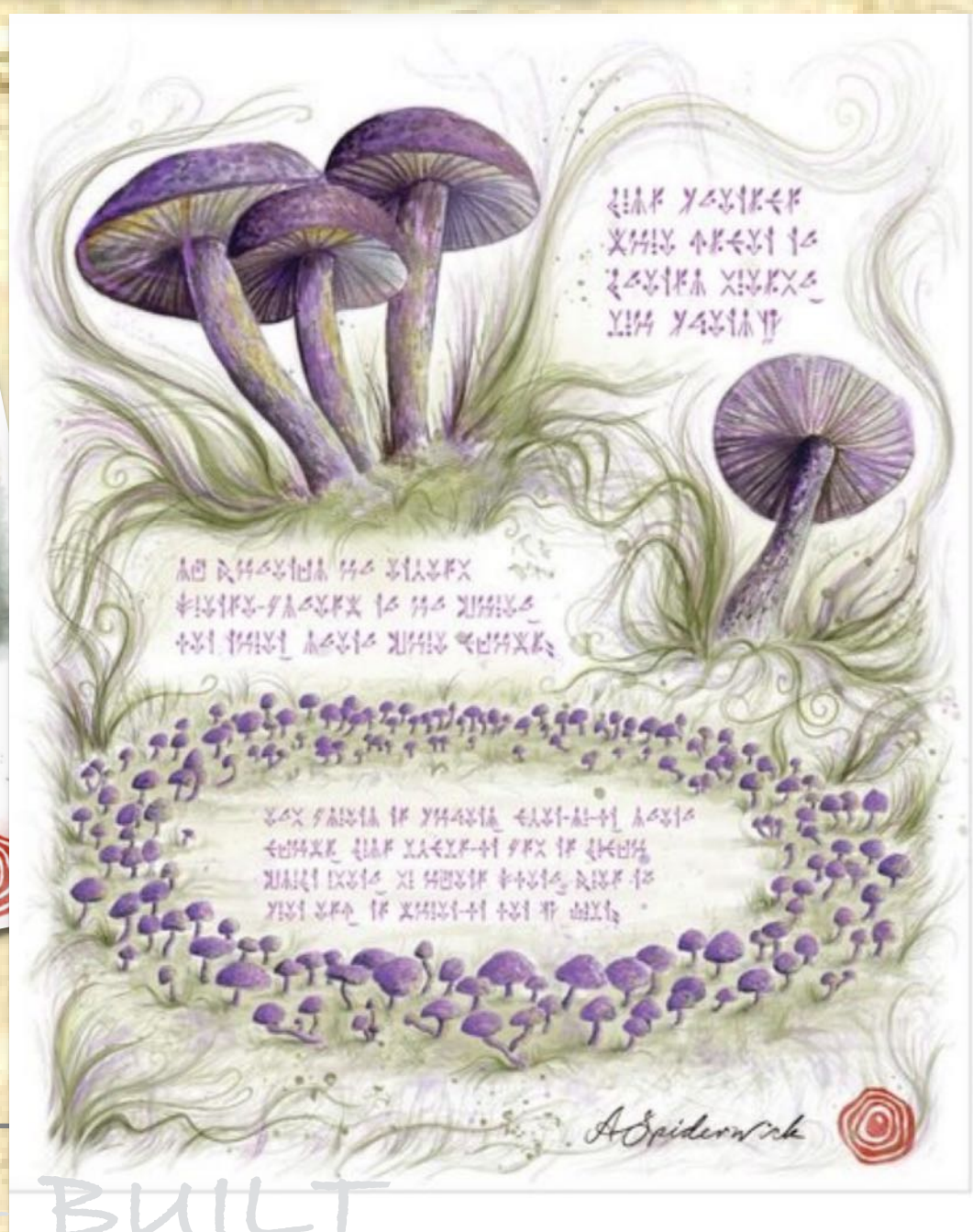
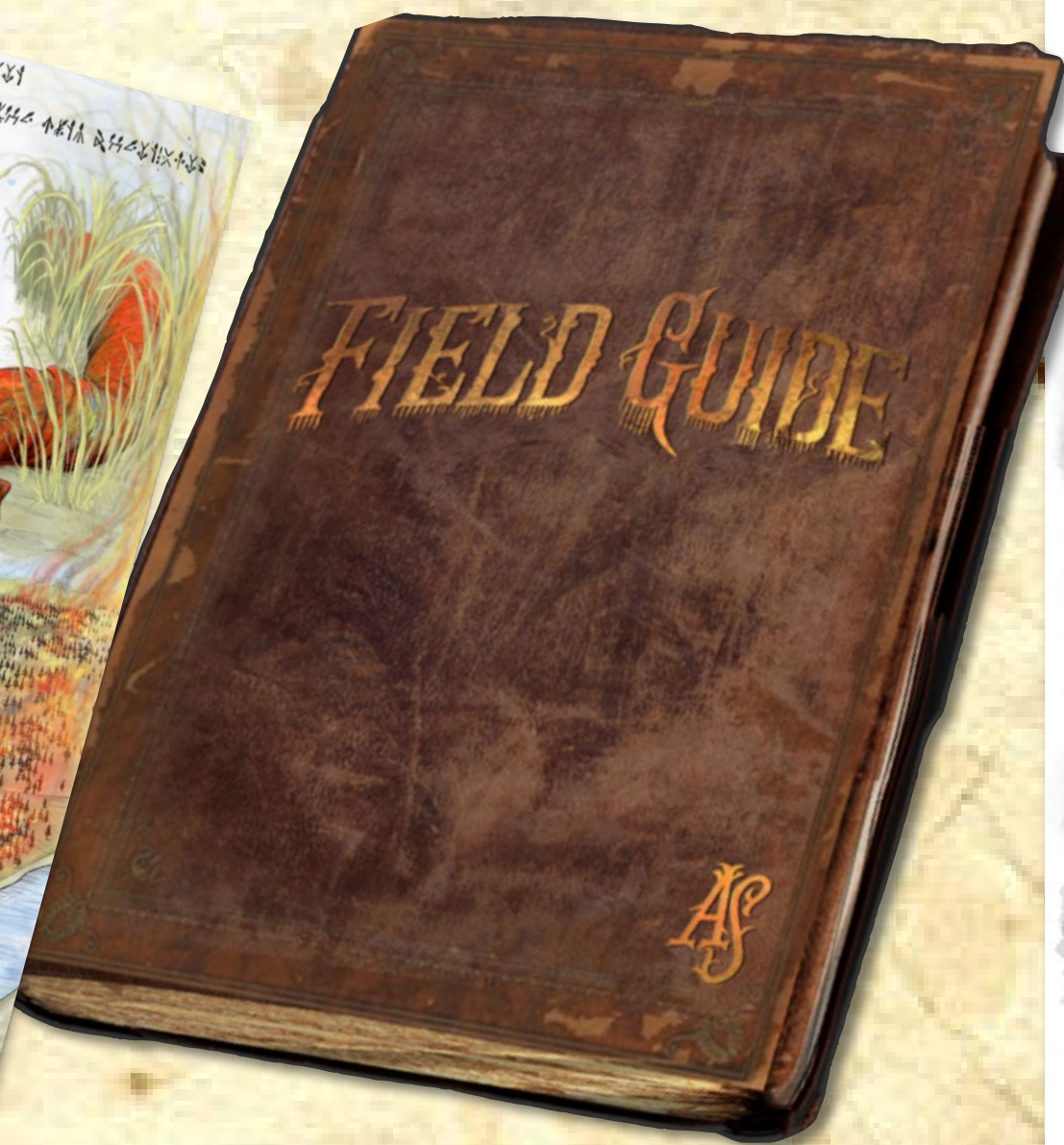
Illustration by J. Castagna



INT. ATTIC BUILT







THE FIELD GUIDEN - BUILT



INT. ATTIC SHOT





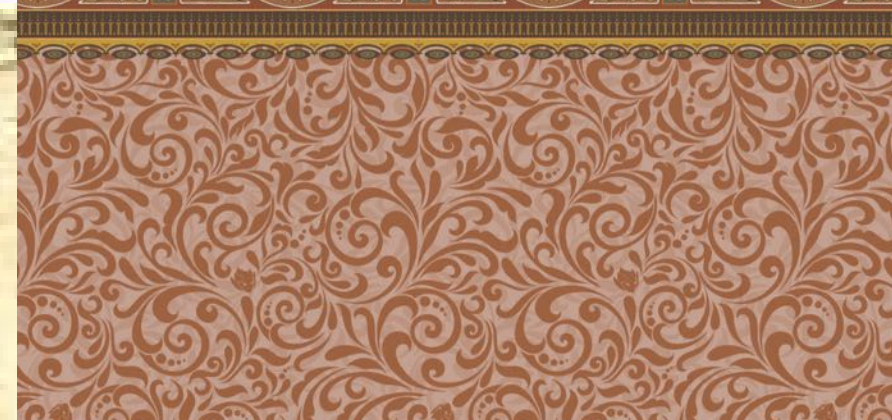
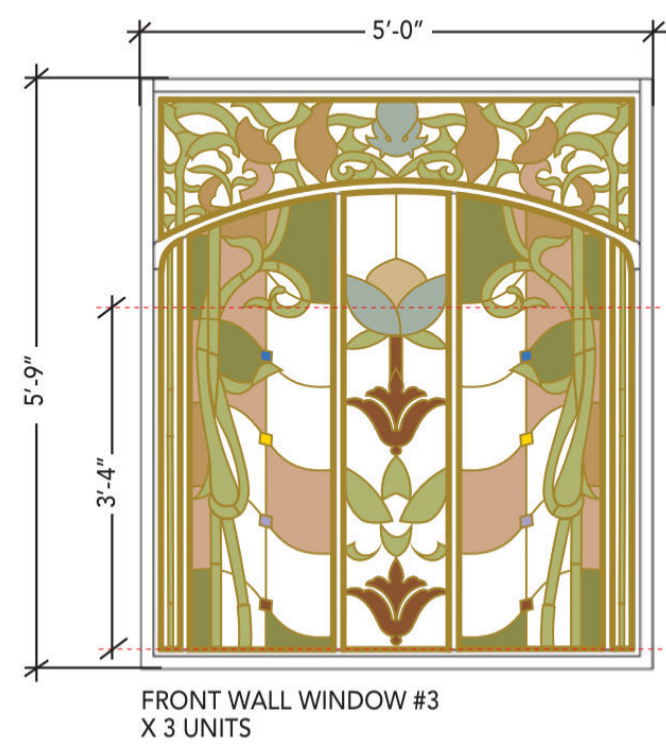
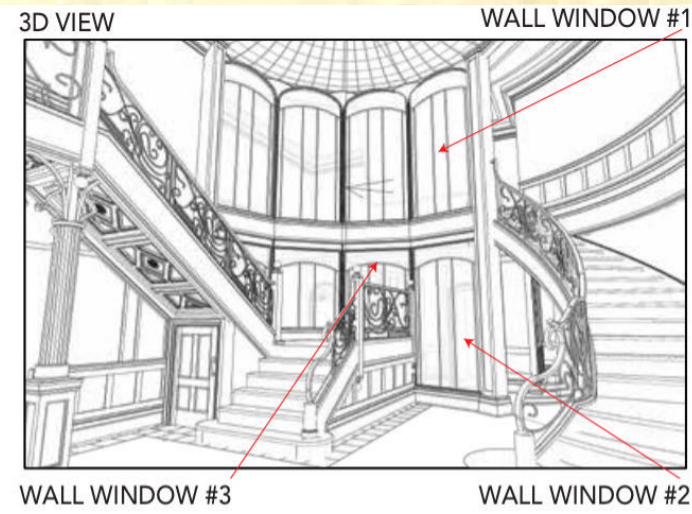
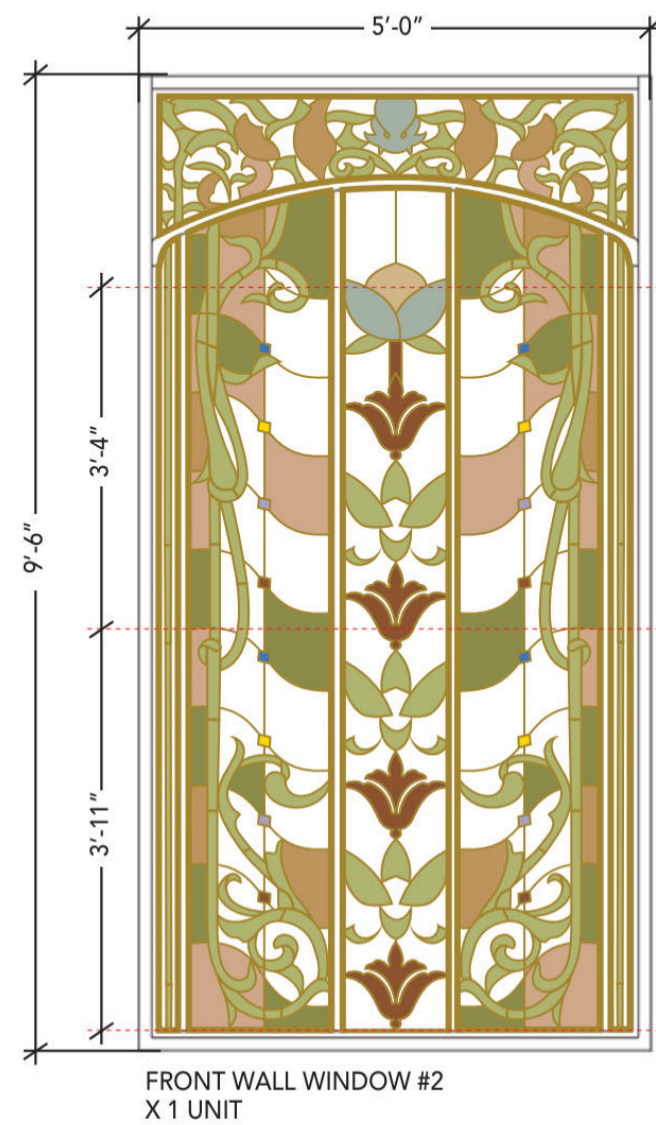
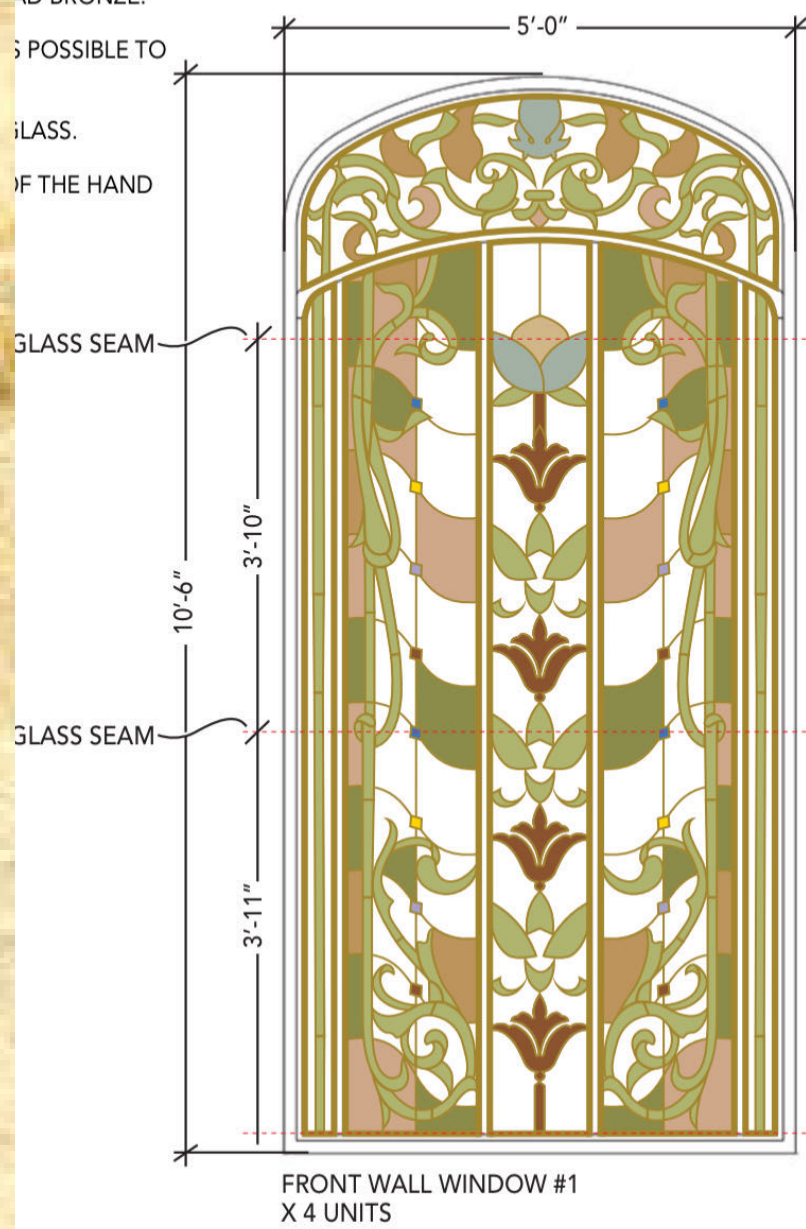


- COLOR PALLETTE:**
- PANTONE 5645 C
 - PANTONE 4665C
 - PEACEFUL GARDEN CSP-830
 - PANTONE 7502C
 - PANTONE 5767C
 - PANTONE 465C
 - PANTONE 660C
 - BROWN BERRY CSP-1125
 - PANTONE YELLOW 012C
 - BRONZE (FOR THE LEAD)
 - PANTONE 7445 C



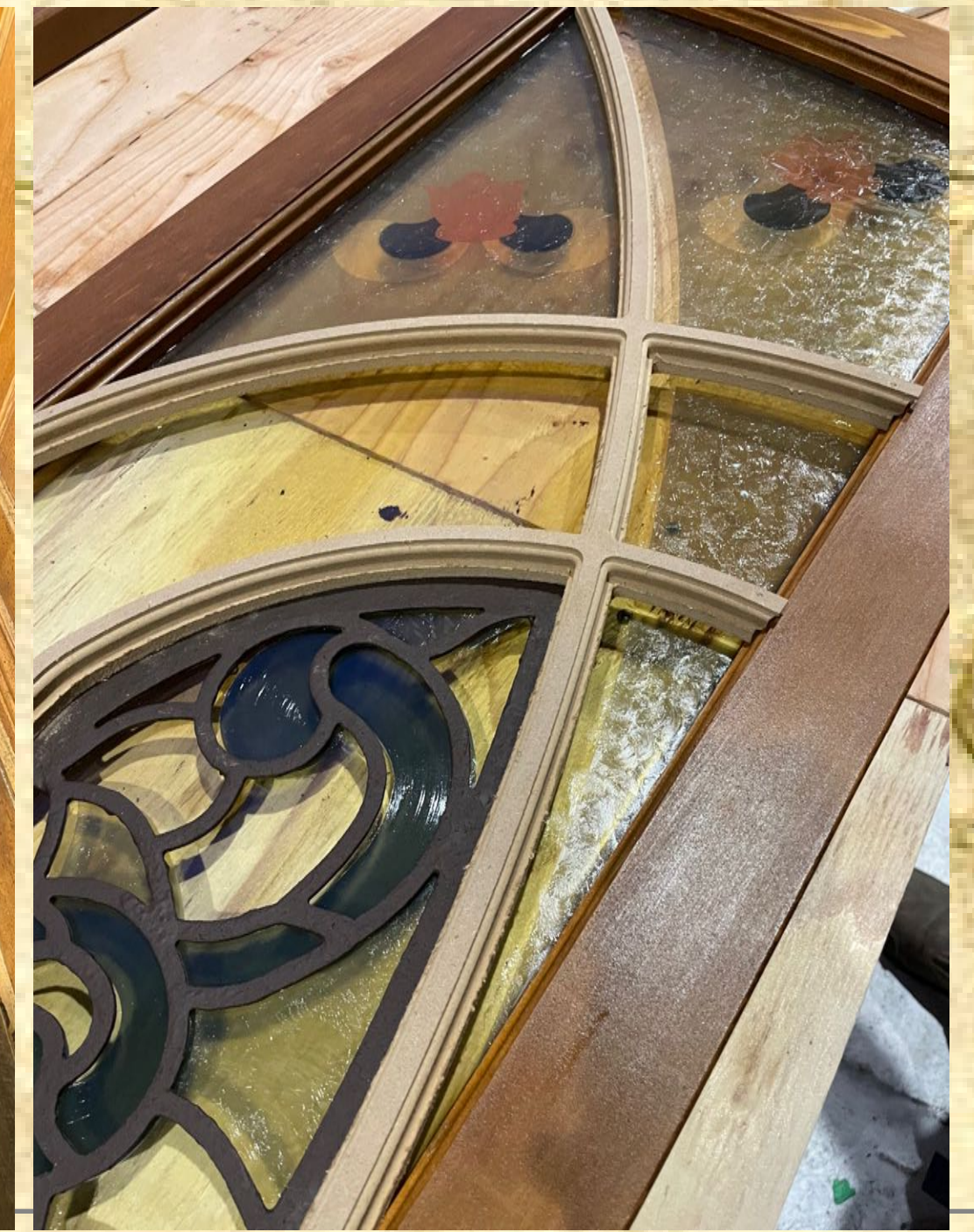
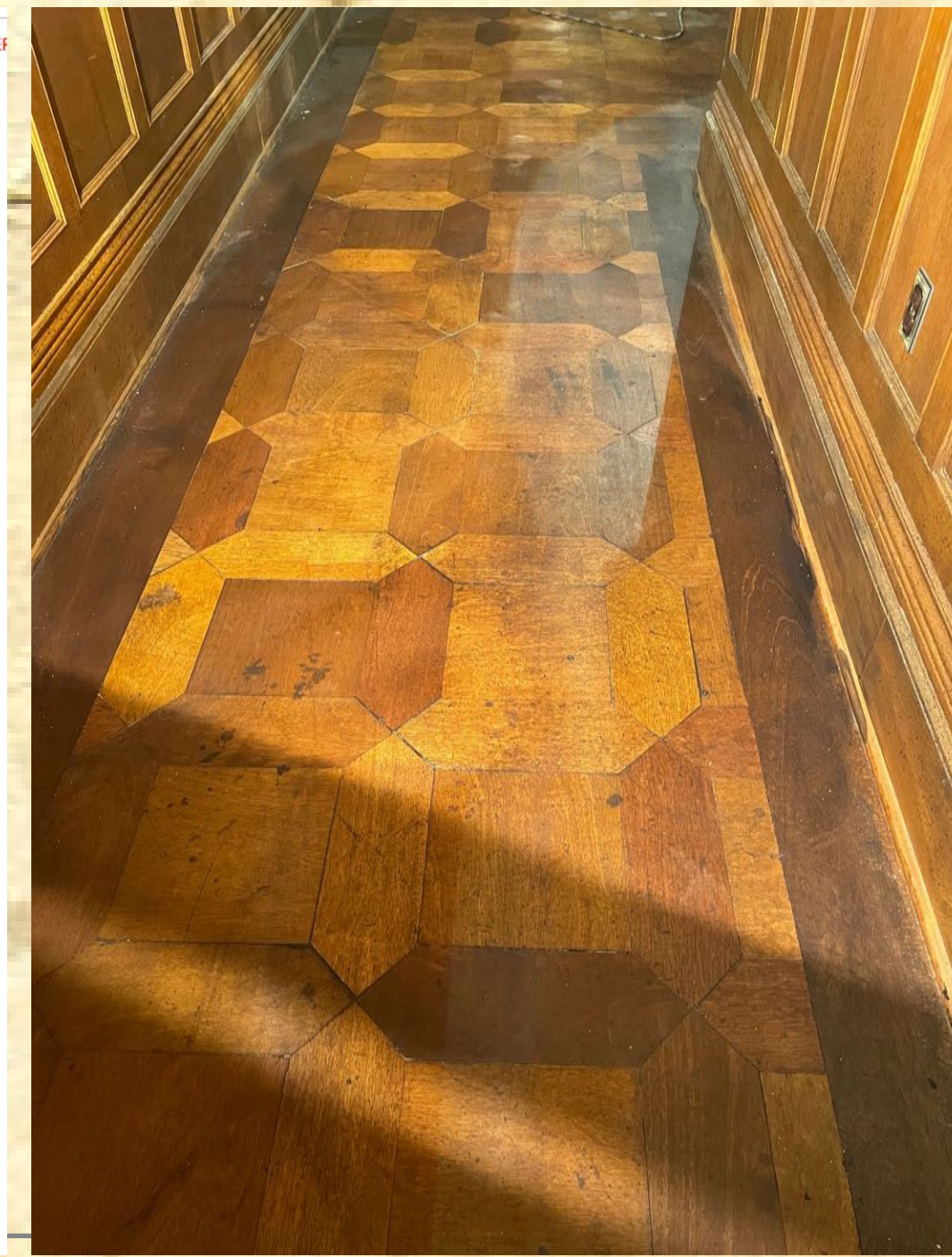
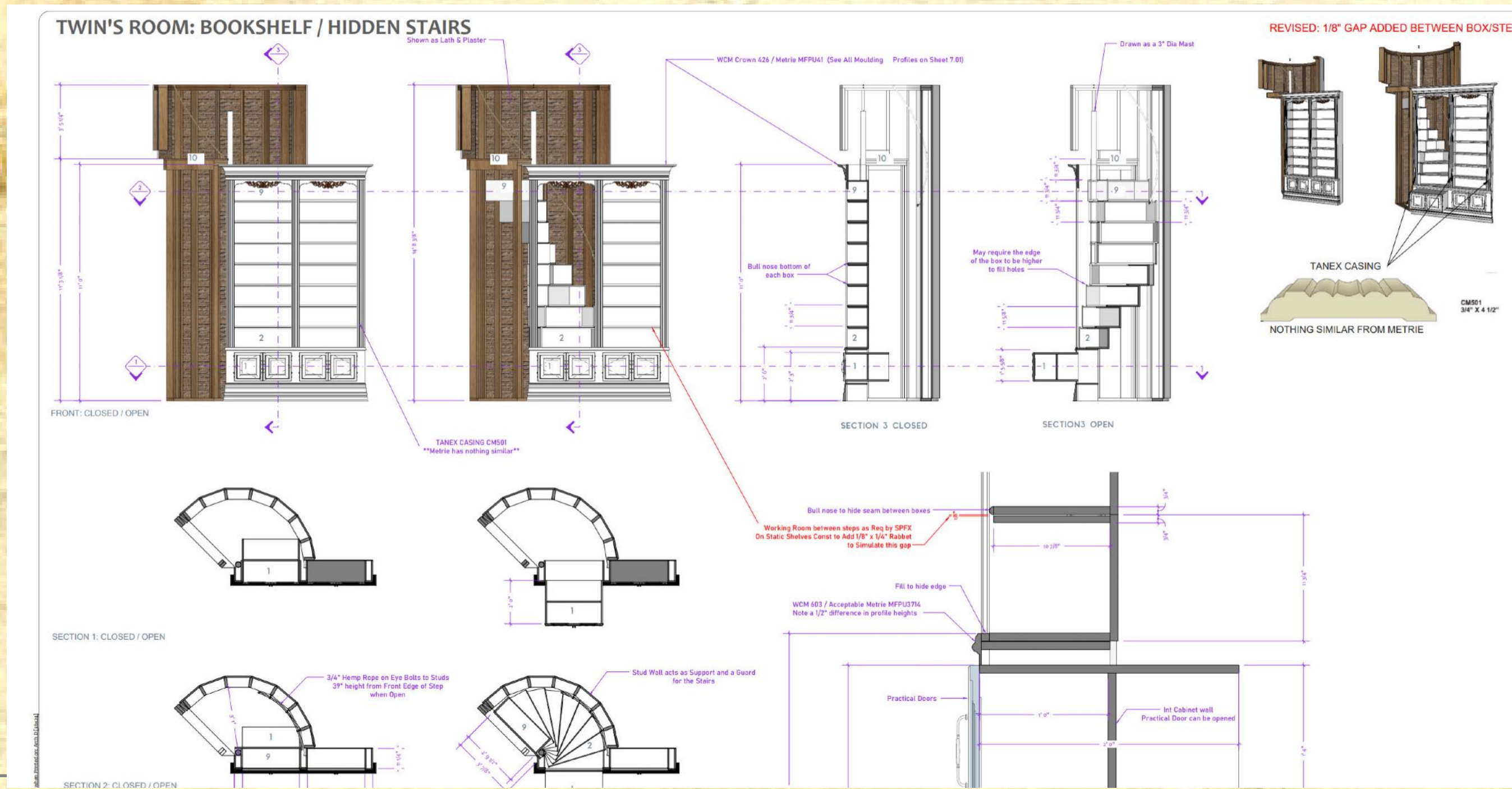
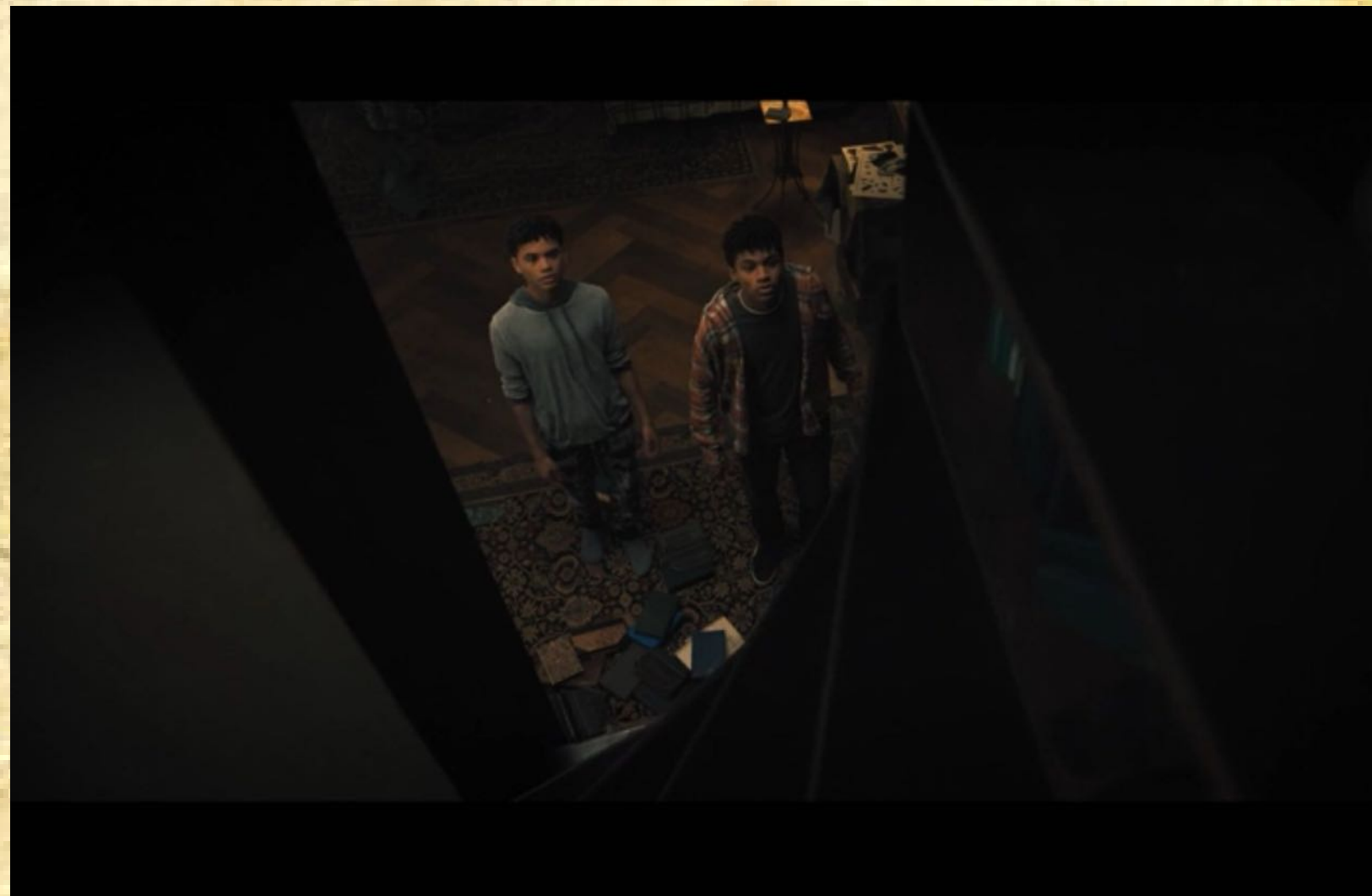
INT. SHOP.
 Y OR BLACK
 ES OF THE
 AD BRONZE.

S POSSIBLE TO
 GLASS.
 F THE HAND



ISSUED: 2022-SEP-07

INT. 2ND FLOOR - BUILT
 LITTLE FAIRIES ARE HIDING EVERYWHERE



INT. SECOND FLOOR ROOMS - BUILT



INT. SECOND FLOOR ROOMS - BUILT



INT. SECOND FLOOR ROOMS - SHOTS

LOCATIONS

FIG. D



FIG. E



FIG. F



*Some seem gentle,
one's name is*

FIG. I



FIG. J



FIG. K



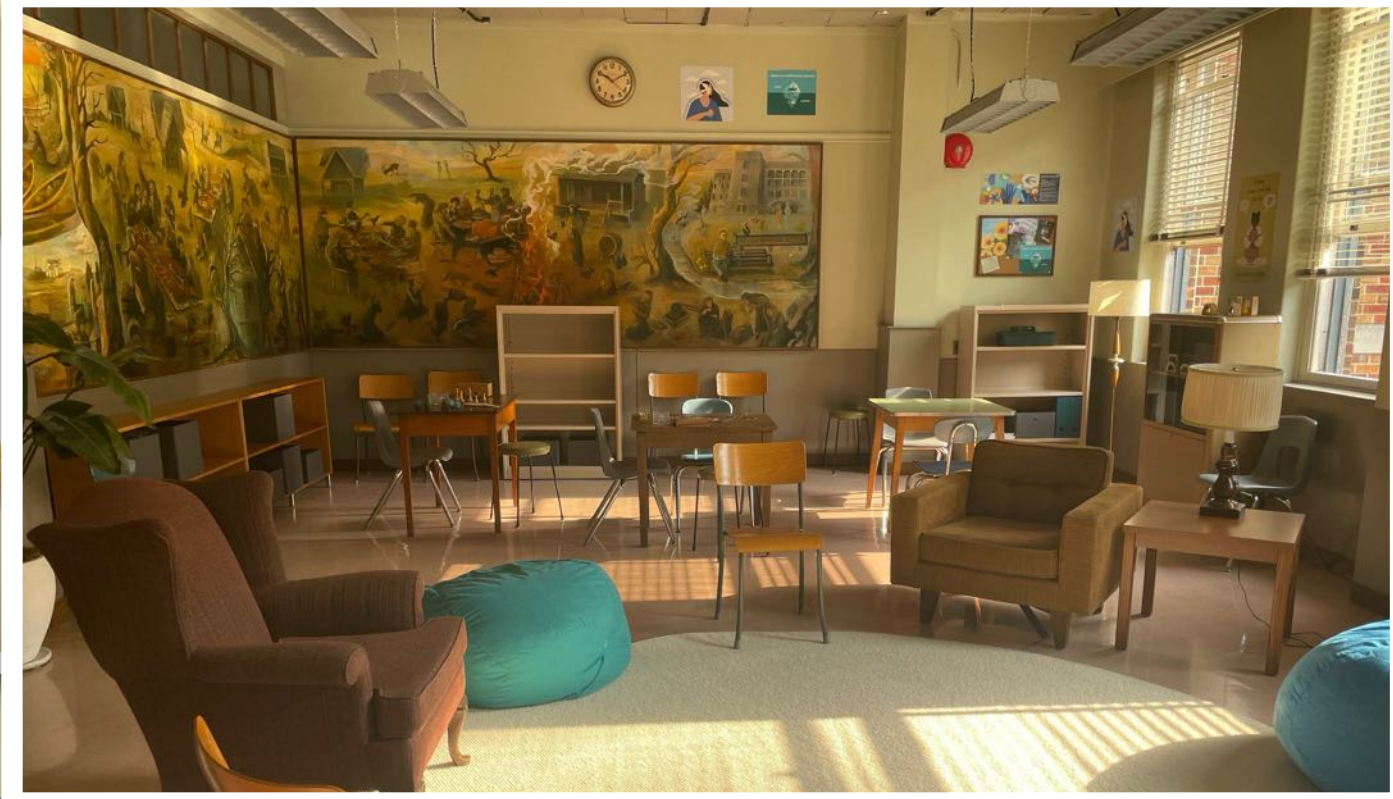
*I
have
a
list
of
the
names
of
the
insects
found
in
the
mountains
of
the
Himalayas.*



TROLL BRIDGE - LOCATION + BUILT



TROLL BRIDGE- SHOT



THERAPY ROOM - LOCATION + BUILT



Spiderwick

Int Hospital - Lucinda's Hallway

Paolo Venturi || 08 03 2022



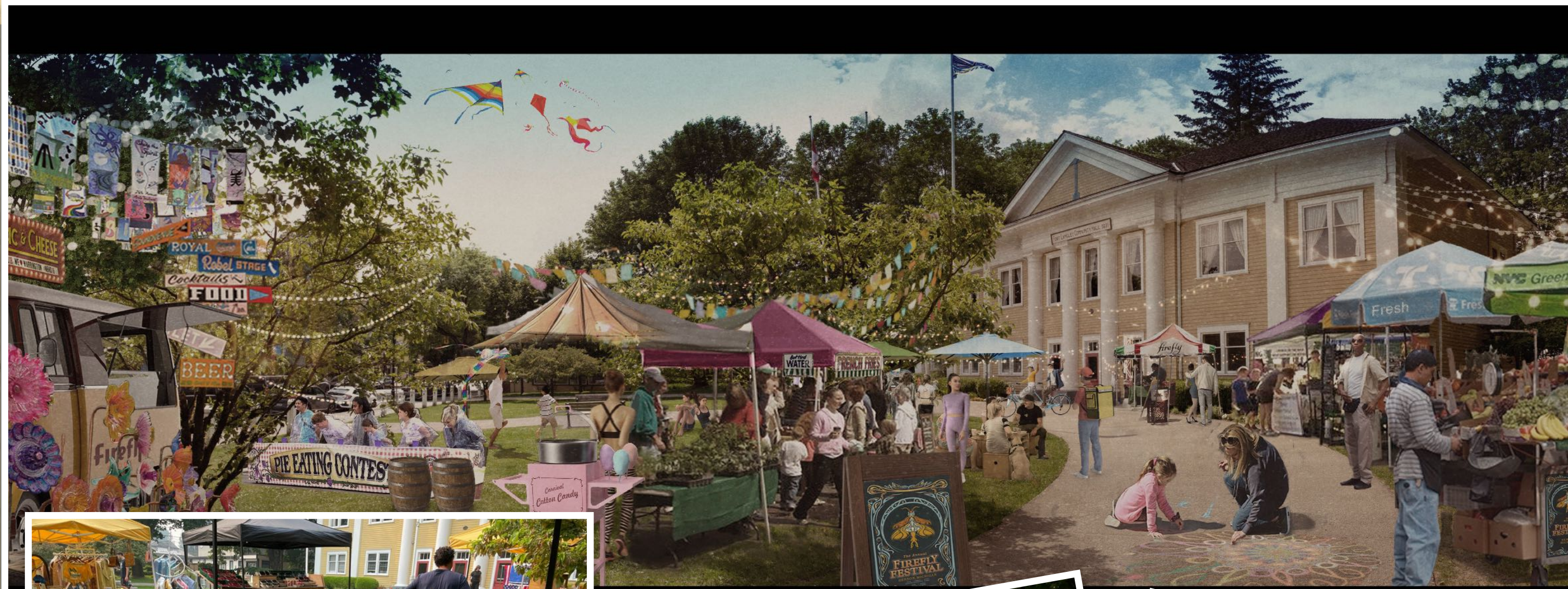
Spiderwick

Int Lucinda's Hospital Room

Paolo Venturi || 08 12 2022



THERAPY ROOM



Firefly Festival Day

Paolo Venturi || 08 04 2022

LOCATION SITEPLAN: FORT LANGLEY, BC CANADA

SET: HENSON, MICHIGAN - MAIN STREET



EST HENSON







SCHERMA - SHOT





INT. GOD KITCHEN - BUILT





INT. GOD KITCHEN - SHOTS

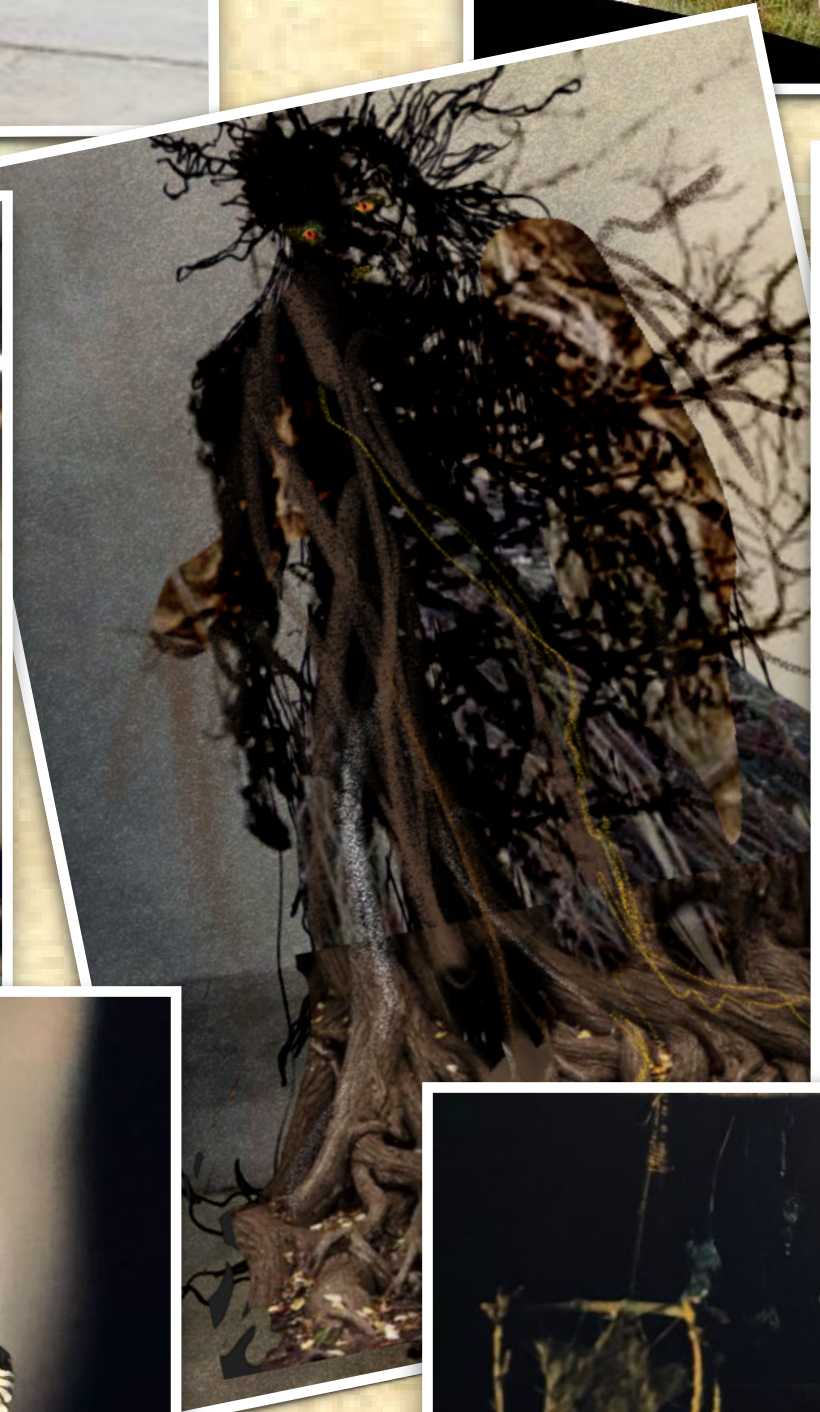


FIG. D



FIG. E



FIG. F



*Some seem genderless,
one's name is Leather.*



FIG. I



FIG. J



FIG. K



The End

geos pages

Faint handwritten text at the bottom left corner.