

FOR YOUR CONSIDERATION



WHITE BIRD

Your father has told you stories, I'm sure. About what happened to me, when I was a girl...

PRODUCTION DESIGNER: JENNIFER WILLIAMS

White Bird Design Statement

White Bird serves as both a sequel and prequel to Wonder (2017). We follow Julien who is struggling to fit in at his new school after being expelled for bullying a student. He is visited by his grandmother and is transformed by the story of her attempts to escape Nazi-occupied France during World War II.

Many locations were scouted and explored, and with the detrimental effect of the pandemic, some countries were off limit. There was a lot of furniture manufacturing needed as lockdown also restricted access to furniture and props being found, the team were ingenious. All locations in Prague were found by Production Designer, Jennifer Williams and Locations Assistant, Veronika Krhounova as the Locations Manager fell ill with COVID-19. The harsh winter weather was also a burden the team faced.

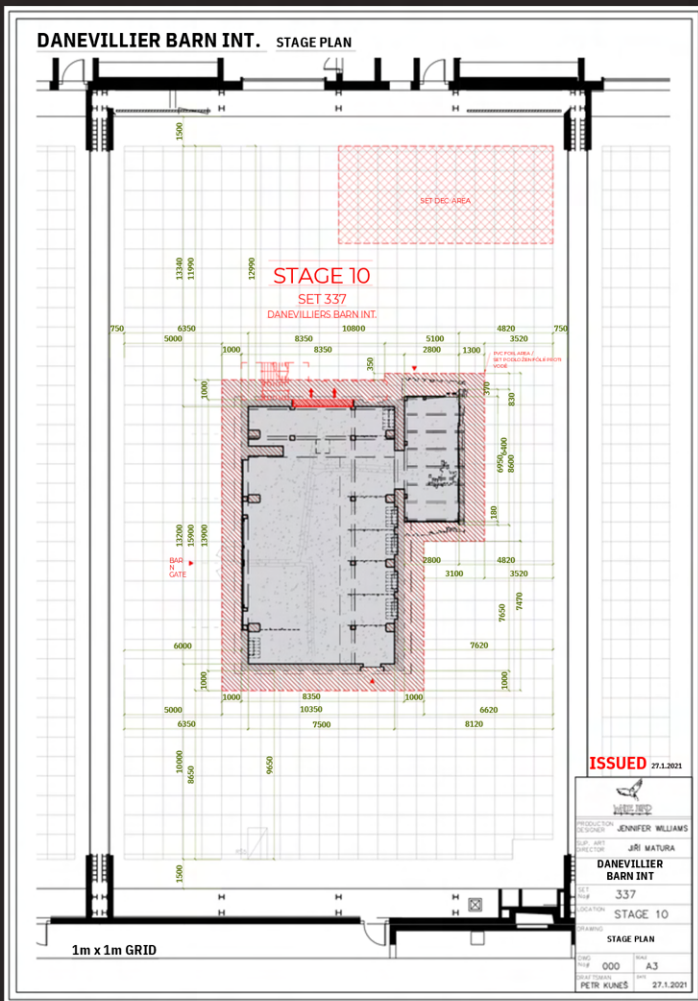
The ideal setting for the Beaumiers' home and barn was on the property of the historic Stampach Mill, which dates back to 1780. Williams began by researching barns in the Norfolk and Sussex counties of England, as well as others in France, all the while paying particularly close attention to the stone, wood and other natural elements used. When designing the barn, factors such as how the interior spaces would be lit and whether a child could conceivably survive within the structure were considered. Old lumber found on location was used to construct the wooden structures. It was constructed twice, one at Barrandov Studios for the interior, one at Stampach Mill which was constructed in just over a month. A skeleton of the barn was built but the team faced a huge challenge as the weather was freezing. It was so cold that the fiberglass brick plates became frozen. To combat this, they built a bonfire to defrost the frozen bricks.

Also transformed were parts of the well-preserved, medieval center of Kutna Hora, a UNESCO Heritage Site, into the French village of Aubervilliers aux Bois, including the exteriors of the Blum family's flat, Boulangerie Ballou, and the Cinema Mernuit. The interior of the latter was located at the Orechovka Cinema, one of the last classic cinemas in Prague. As it had already been closed for over twenty years, it could be transformed back to its original art-décor, period-appropriate interior.

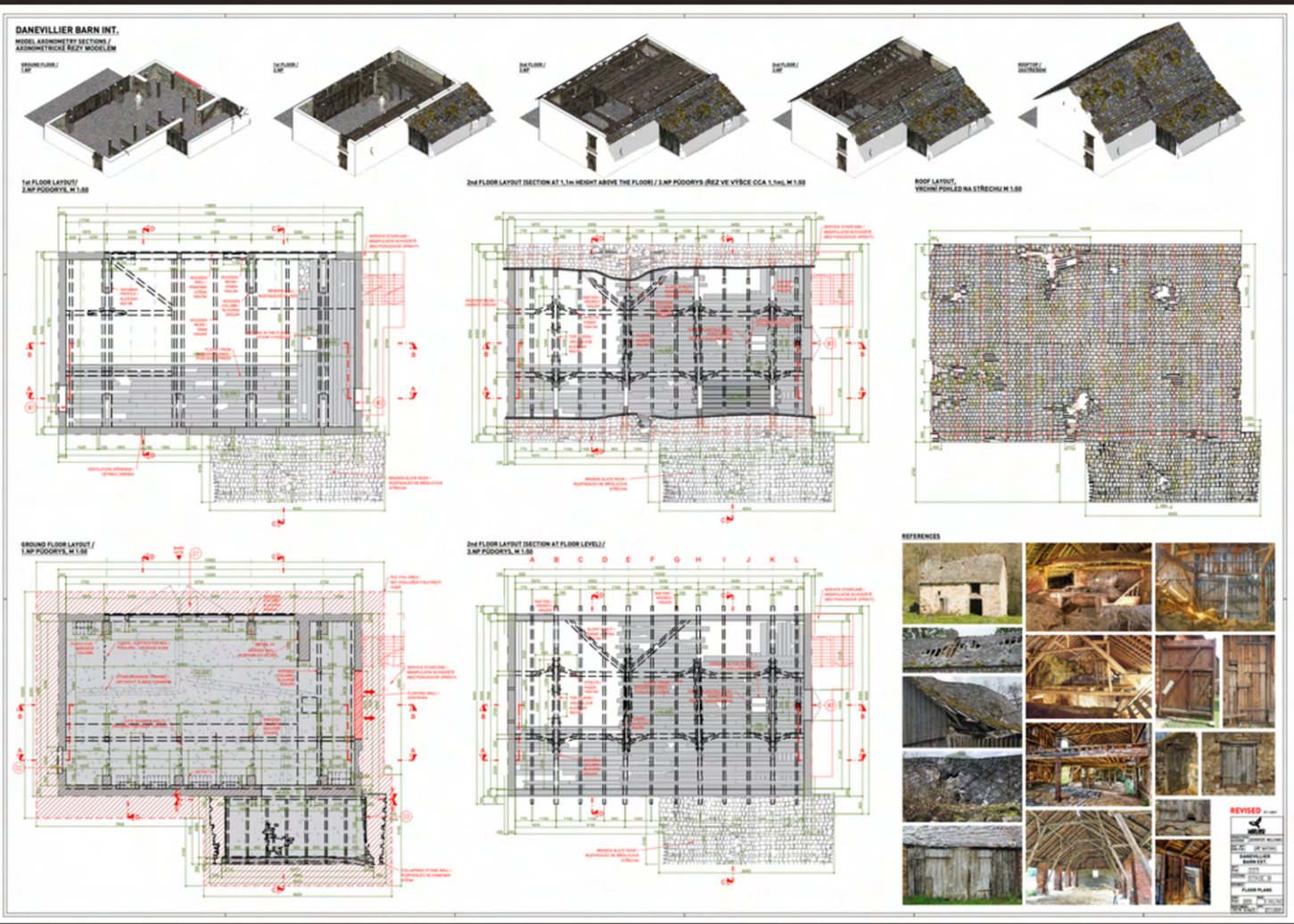
The location for the interior of the NYC apartment was essential as its scenes opened and closed the film and served as a powerful framing device for the flashbacks to the protagonists' earlier years. Sara Blum grows up to become a well-respected artist, so the art department was tasked with providing artwork throughout filming representative of her artistic development, from her earliest pieces to her more sophisticated paintings.

Finally, after over three years of being complete, White Bird can reach audiences of all ages with its strong message of the need for kindness and friendship in an increasingly dark world. The connection between two people who didn't really see one another, who got brought together through historical circumstances and through the hatred around them.

Jennifer Williams
Production Designer

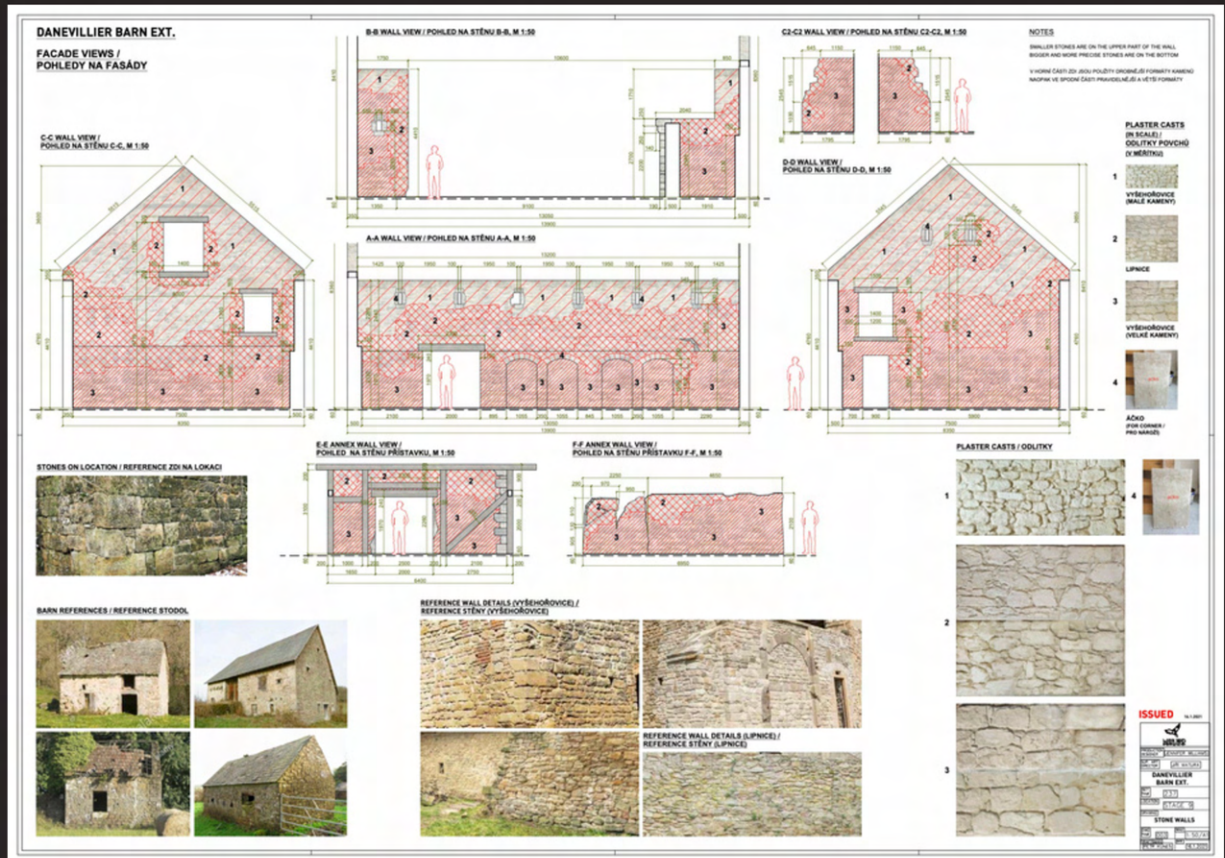


INT - DANEVILLIER BARN

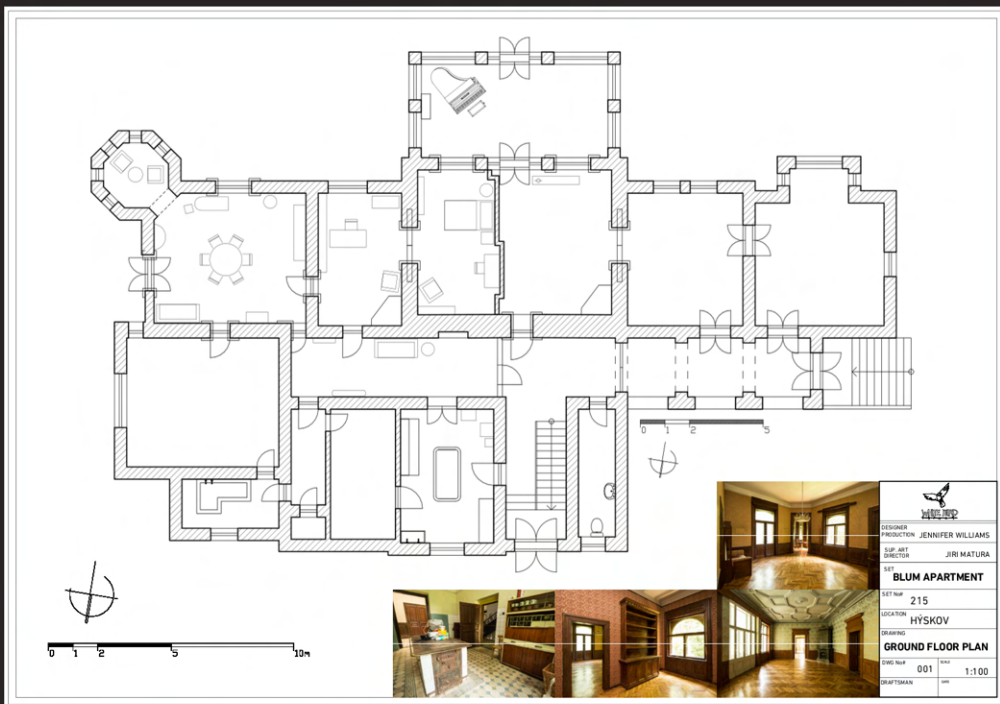




EXT - DANEVILLIER BARN







FPS 24.000 SHUTTER 172.8 IRIS - EI 1280 ND - WB 5000 K +0.0 CC C

SDI LOG Cam A Sc 76 x 1 Rt -

<2.0> WRS

CAM 3.4K RAW



Tomas - iPad

24.000 00:00:24:05 13:38:14:18

FOCUS -

FCL - BAT 13.9V C159 C005 ●REC CARD 0:09 h TC 13:38:14:20

FPS 24.000 SHUTTER 172.8 IRIS - EI 1280 ND - WB 5000 K +0.0 CC C

SDI LOG Cam A Sc 74A x 2 Rt -

<2.0> WRS

CAM 3.4K RAW



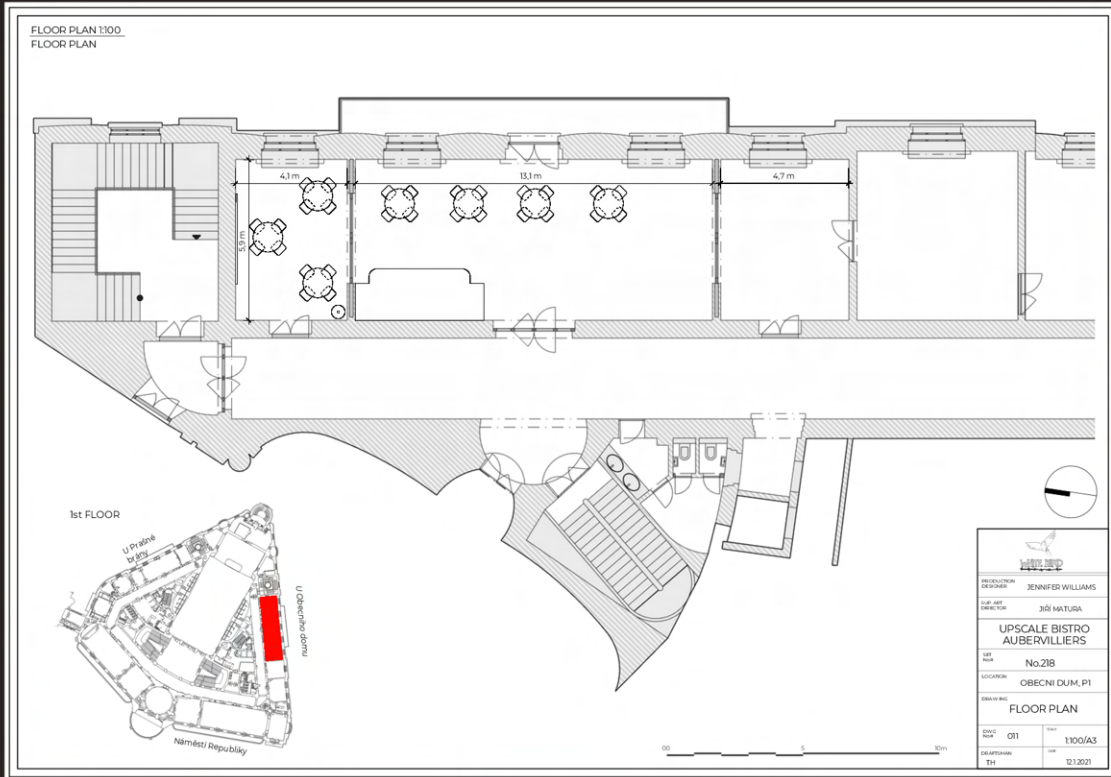
Tomas - iPad

24.000 00:00:21:14 13:20:44:03

FOCUS -

FCL - BAT 14.0V C159 C002 ●REC CARD 0:12 h TC 13:20:44:04







FPS 24.000 SHUTTER 172.8 IRIS - EI 800 ND 2.1 WB 5600 K +0.0 CC E

SDI Look CAM B 202A 1 -

Tomas - iPad

24_000 00:01:43:19 00:02:14:12

FOCUS -

FCL 25.0mm BAT 13.8V E008 C001 REC CARD 0:12 h TC 15:50:51:17

CAM B 172D 1 -

Tomas - iPad

24_000 00:00:13:05 00:00:00:00

24 FPS FOOTAGE → 285

FPS 24.000 SHUTTER 172.8 IRIS - EI 800 ND 2.1 WB 5600 K +0.0 CC E

SDI Look CAM B 203A 1 -

Tomas - iPad

24_000 00:01:09:05 00:02:55:08

FOCUS -

FCL 25.0mm BAT 13.8V E008 C003 REC CARD 0:04 h TC 16:37:44:09



FPS 24.000 SHUTTER 172.8 IRIS - EI 1280 ND - WB 4700 K +0.0 CC C

SDI Look CAM A 186 2 -

Tomas - iPad

24_000 00:00:18:16 14:19:58:14

FOCUS -

FCL - BAT 13.6V C048 C002 REC CARD 0:14 h TC 14:19:58:16

CAM A 210B 4 -

Tomas - iPad

24_000 00:03:05:05 15:52:14:17

24 FPS FOOTAGE → 231

FPS 24.000 SHUTTER 172.8 IRIS - EI 1280 ND - WB 5000 K +0.0 CC C

SDI Look CAM A 204D 2 -

Tomas - iPad

24_000 00:00:33:10 12:09:56:11

FOCUS -

FCL - BAT 14.5V C024 C007 REC CARD 0:06 h TC 12:09:56:13