

HOW TO DIE ALONE

The title 'HOW TO DIE ALONE' is written in a bold, black, hand-drawn brush script. The word 'HOW' is on the top line, and 'TO DIE ALONE' is on the bottom line. The letter 'O' in 'ALONE' is replaced by a blue globe with white grid lines. A red airplane icon is positioned above the globe, appearing to fly towards it.

SEASON 1 EPISODE 106 "LET FEAR WIN"

29TH ANNUAL ADG EXCELLENCE IN PRODUCTION DESIGN AWARDS SUBMISSION

PRODUCTION DESIGNER: ALMITRA COREY

SET DECORATORS: PETER NICOLAKAKOS / BRITTANY MORRISON

ART DIRECTOR: ALEKS CAMERON

1ST ASST. ART DIRECTOR SET DESIGN: CLÉMENCE PALVADEAU

1ST ASST. ART DIRECTOR GRAPHICS: SASHA ODESSE

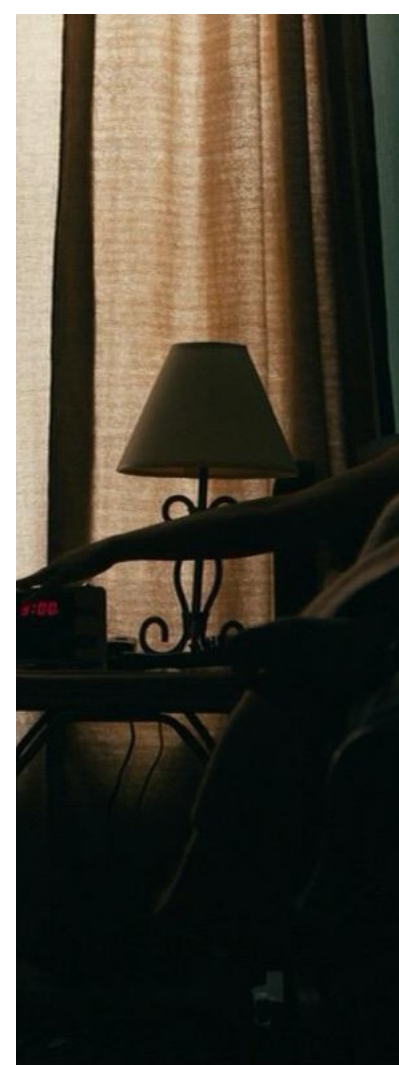
2ND ASST. ART DIRECTOR SET DESIGN ZAKI ABDUL

2ND ASST. ART DIRECTOR GRAPHICS JOSEPH LE

1ST ASST. ART DIRECTOR MOTION GRAPHICS: ALEX BOSCH

ART DEPARTMENT COORDINATOR ANDREA CASSIDY

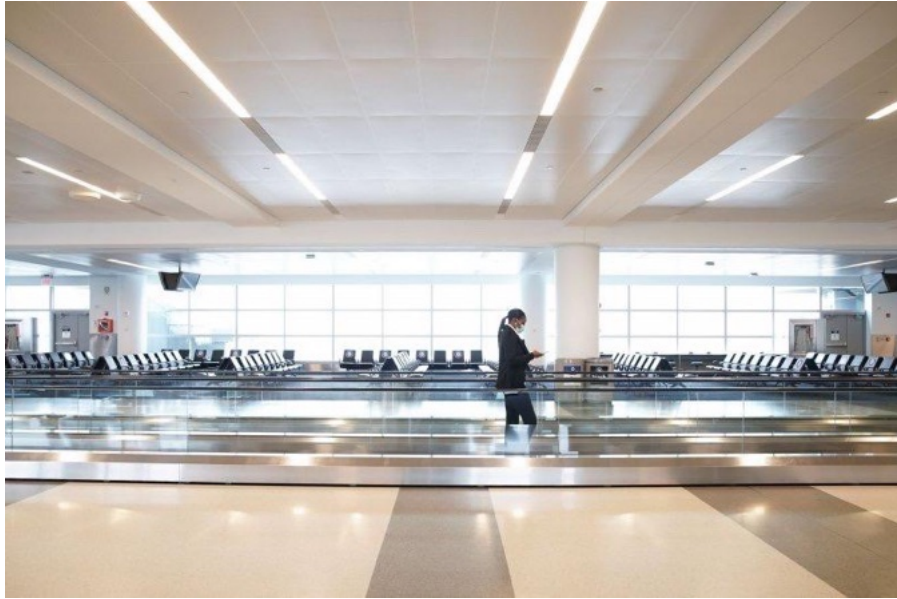
TRAINEE ASST. ART DIRECTOR TISHA MYLES



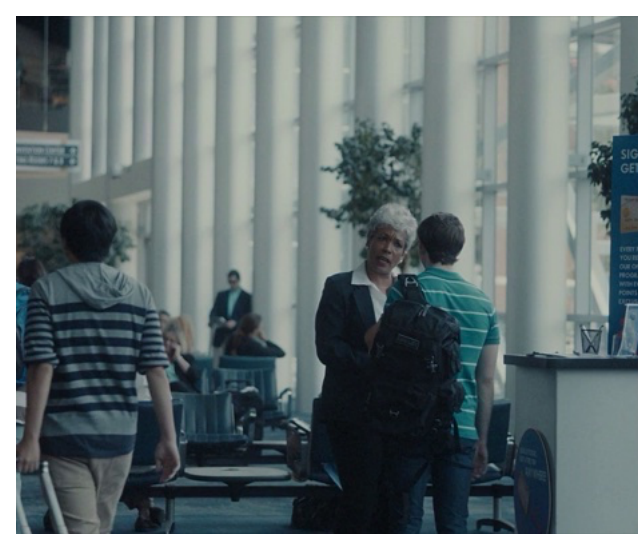
HOW TO DIE ALONE

ALMITRA COREY
PRODUCTION DESIGN
MOOD BOARDS

JFK AIRPORT

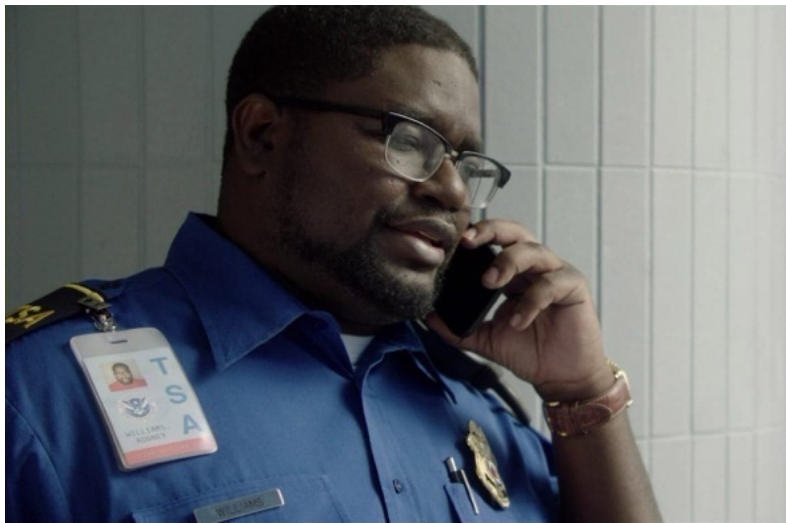








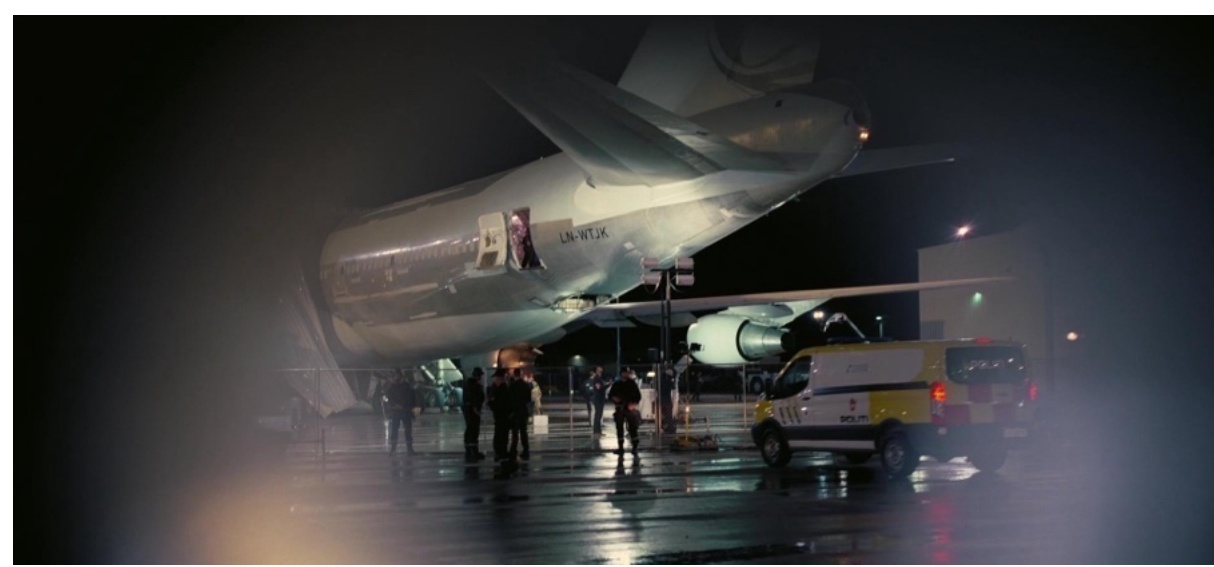












JFK AIRPORT LOCATION





SET PIECES BROUGHT TO LOCATION

SCOUTING WITH OUR FEARLESS LEADER







SET PIECES BROUGHT TO LOCATION



JFK TERMINAL STAGE BUILDS









A2

bon bon cafe

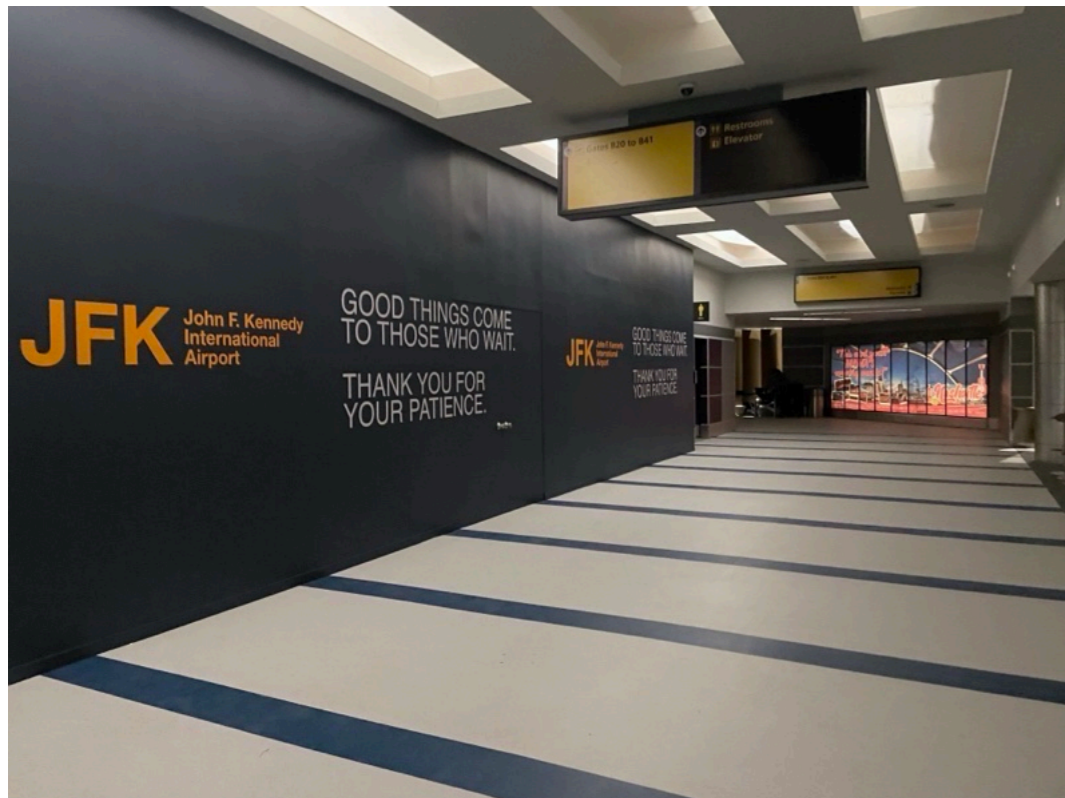
Do Not Leave Any Baggage Unattended
Any Items Left Will Be Confiscated And Searched

Product display area featuring:

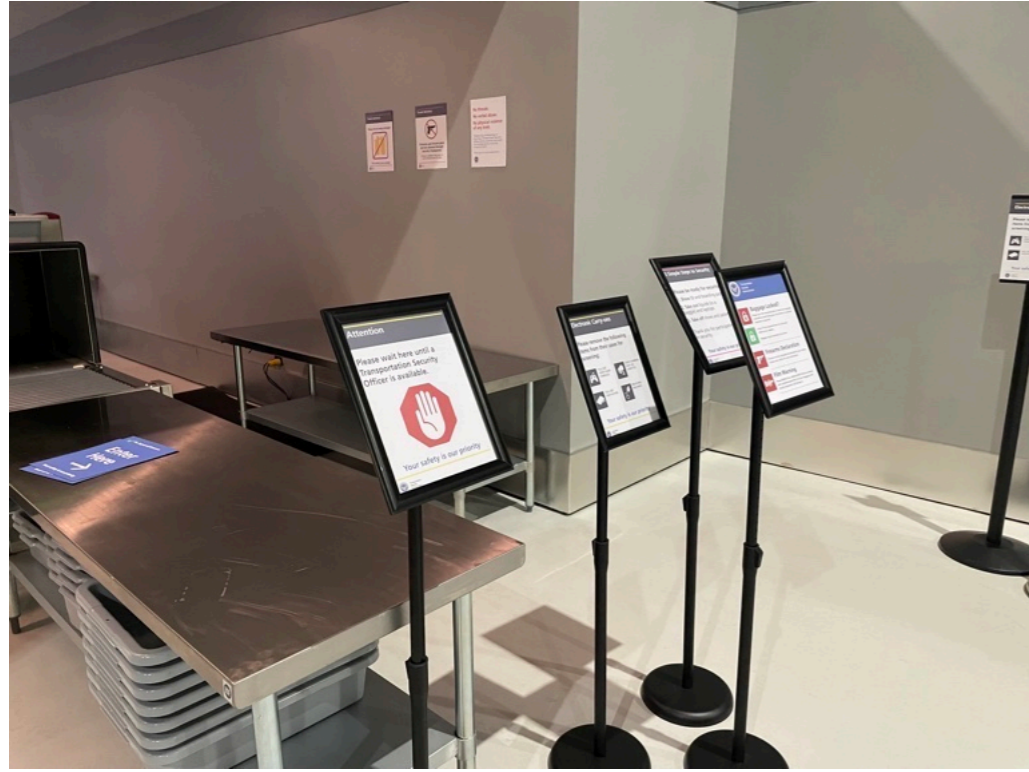
- Top shelf: Jars of nuts and candies, bags of 'TUTTI' brand snacks.
- Middle shelf: More bags of 'TUTTI' brand snacks.
- Bottom shelf: Additional bags of 'TUTTI' brand snacks.













A3

A2

Gates B20 to B41
Restrooms
Elevator

Sandfield

Restrooms Ahead

Restrooms Ahead

Time to get on

Restrooms Ahead

Restrooms Ahead

Restrooms Ahead



Sandfield

Sandfield

Gates B20 to B41
Restrooms
Elevators

EMERGENCY AED
BLEEDING CONTROL KIT
CALL PORT AUTHORITY POLICE
DIAL *21 from a pay phone
JFK
ALARM AND STRIKE LIGHT WILL ACTIVATE
WHEN COVER IS LIFTED



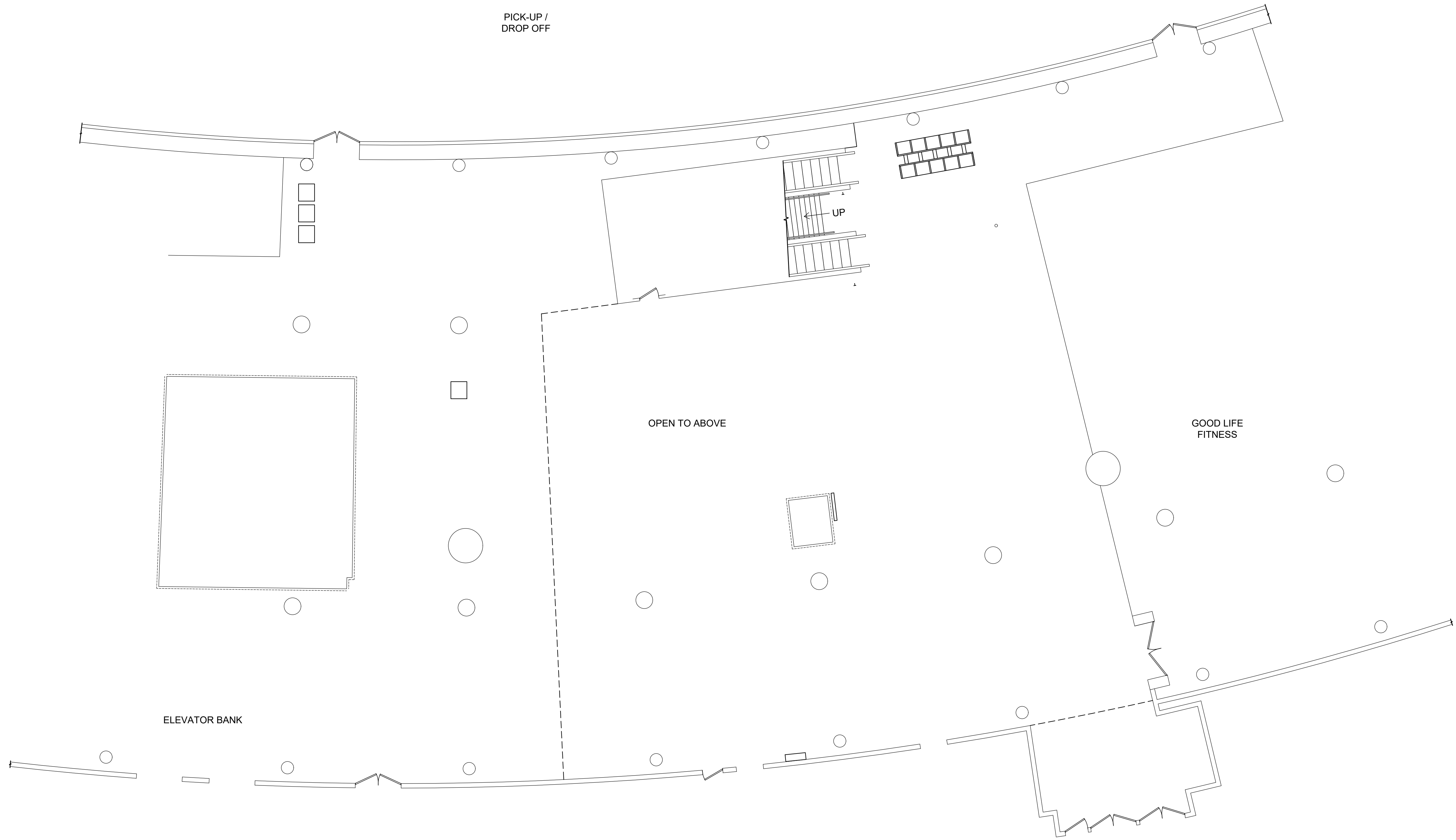
CHARGE WELLNESS



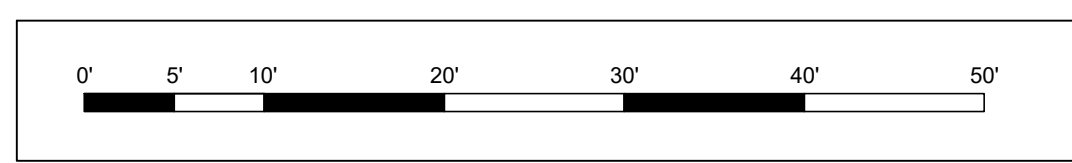
Restrooms Ahead



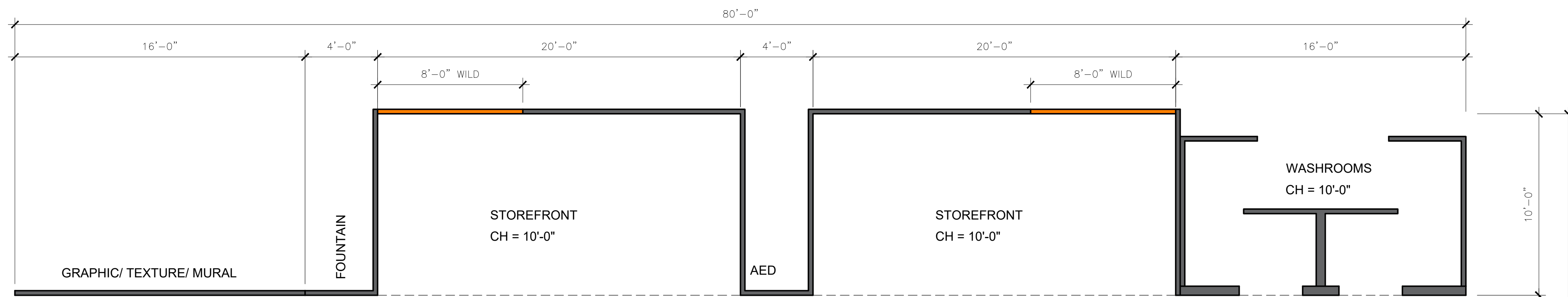




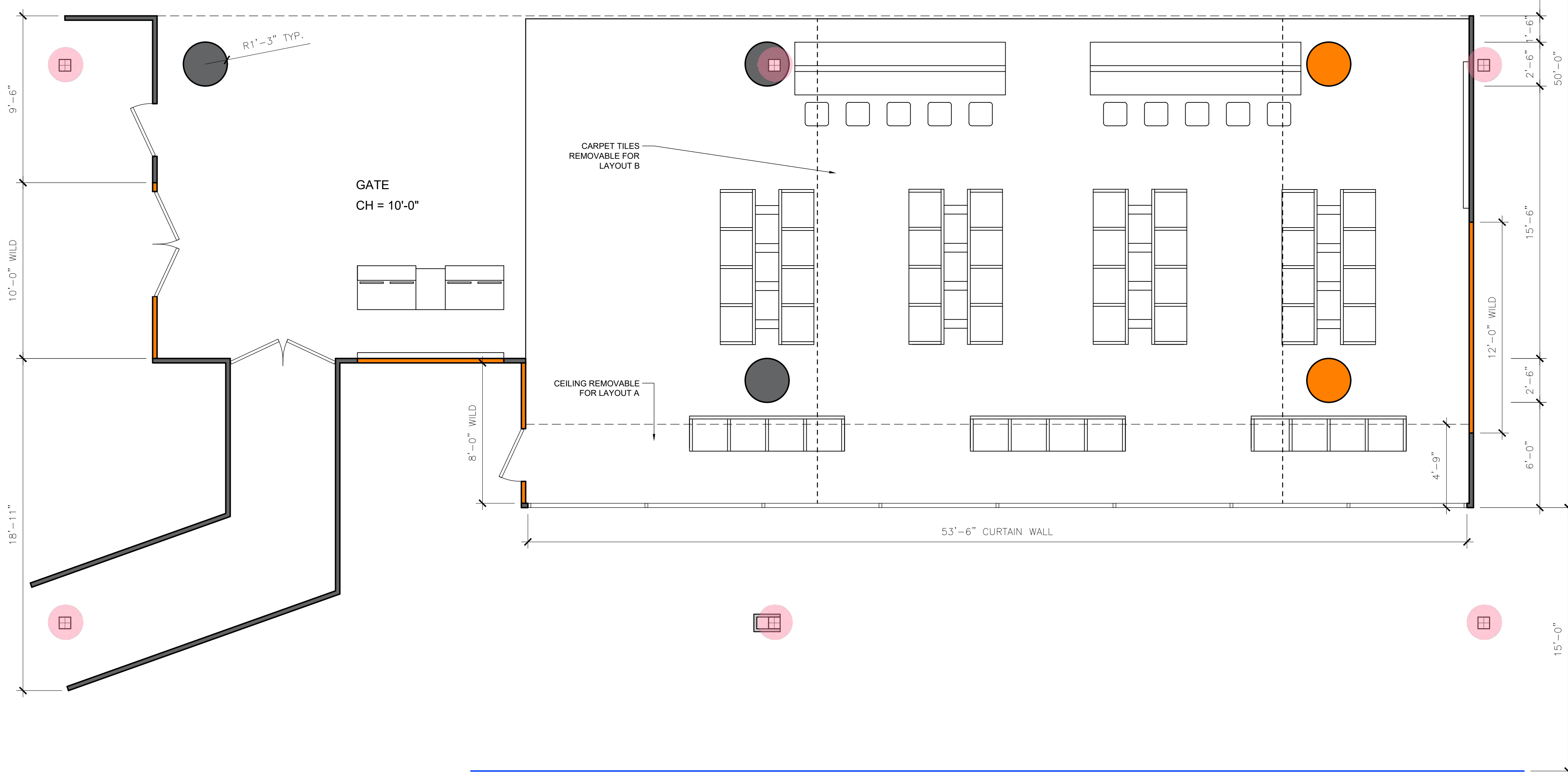
1 FIRST FLOOR PLAN - TERMINAL 1
 SCALE: 3/32" = 1'-0"



SEASON 1	SHEET #: 1.00	SET #: 102	SET NAME: JFK TERMINAL 4 (VARIOUS)	SCALE: AS NOTED	NOTES:	PRODUCTION DESIGNER: ALMITRA COREY ART DIRECTOR: THERESA TINDALL
	BLOCK #: 1	DRAWING: FIRST FLOOR PLAN	DRAWN BY: ES	PAPER SIZE: 24X36		
	LOCATION: PEARSON AIRPORT, TERMINAL 1	DATE: JAN 16, 2023				



CORRIDOR
CH = 14'-0"



1 FLOOR PLAN A
1.00 SCALE: 1/4" = 1'-0"



LEGEND	
	FIXED WALL
	COLUMN PROXIMITY
	WILD WALL
	ELECTRICAL HUB

SEASON 1

SHEET #:
1.00

SET #:
110
BLOCK #:
1

SET NAME: **JFK - GATE C19 (PAX VEHICLE)**
DRAWING: **FLOOR PLAN A**
LOCATION: **EDWARDS BVLD. STUDIO, STAGE 3**

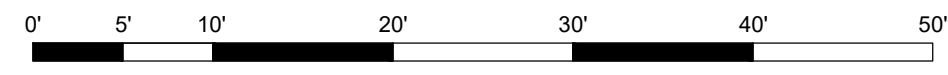
SCALE: AS NOTED
DRAWN BY: ES PAPER SIZE: 24X36
DATE: JAN 17, 2023

NOTES: **PRELIM.**

PRODUCTION DESIGNER:
ALMITRA COREY
ART DIRECTOR:
THERESA TINDALL



1 FLOOR PLAN B
1.01 SCALE: 1/4" = 1'-0"



LEGEND	
	FIXED WALL
	COLUMN PROXIMITY
	WILD WALL
	ELECTRICAL HUB

SEASON 1

SHEET #:
1.01

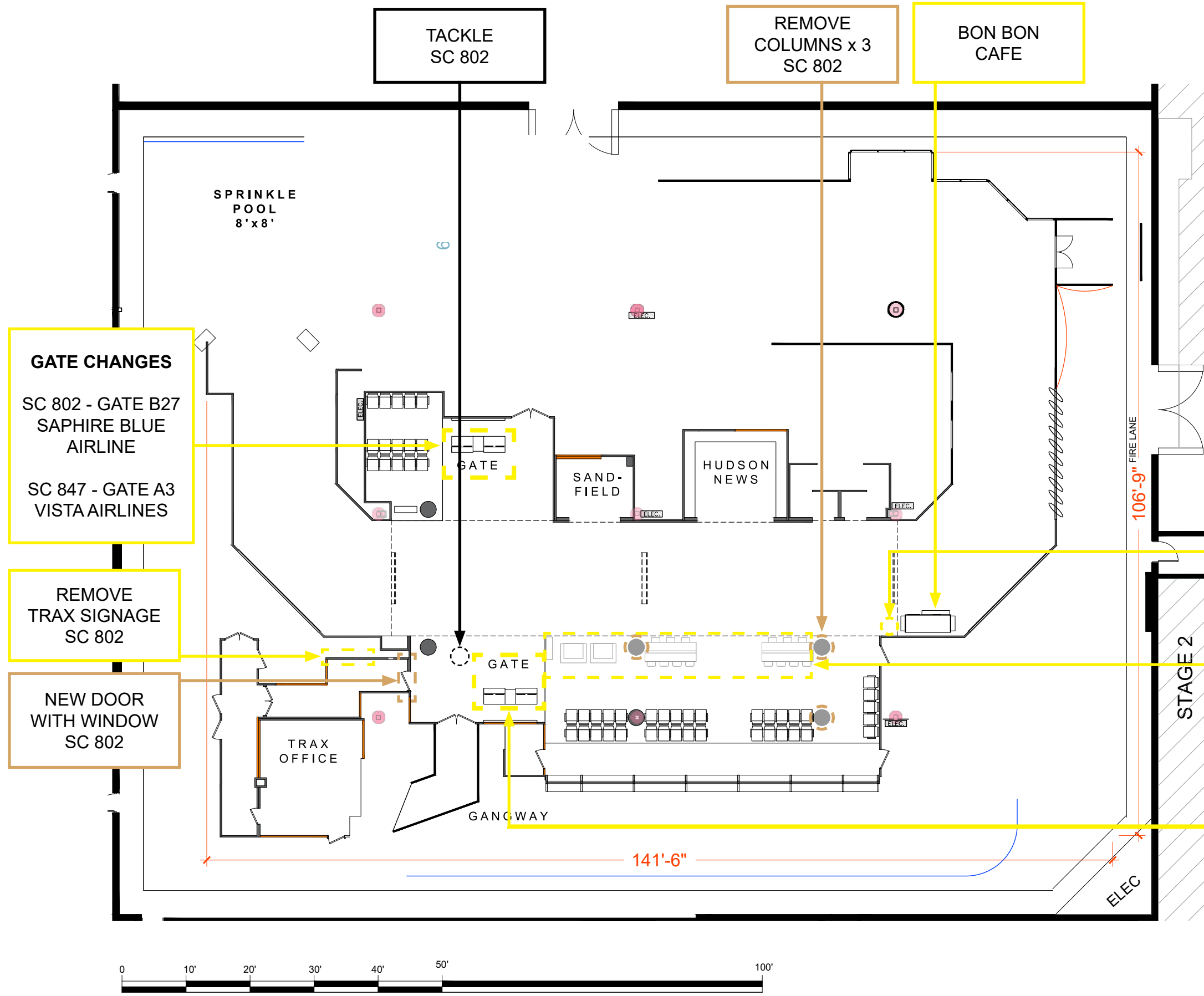
SET #:
110
BLOCK #:
1

SET NAME: **JFK - GATE C19 (PAX VEHICLE)**
DRAWING: **FLOOR PLAN B**
LOCATION: **EDWARDS BVLD. STUDIO, STAGE 3**

SCALE: AS NOTED
DRAWN BY: ES PAPER SIZE: 24X36
DATE: JAN 17, 2023

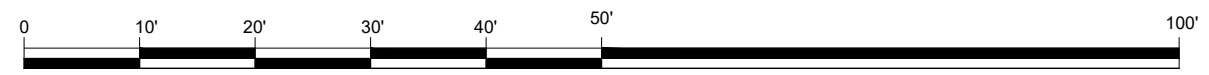
NOTES: **PRELIM.**

PRODUCTION DESIGNER:
ALMITRA COREY
ART DIRECTOR:
THERESA TINDALL



ART DEPARTMENT LOCATION NOTES

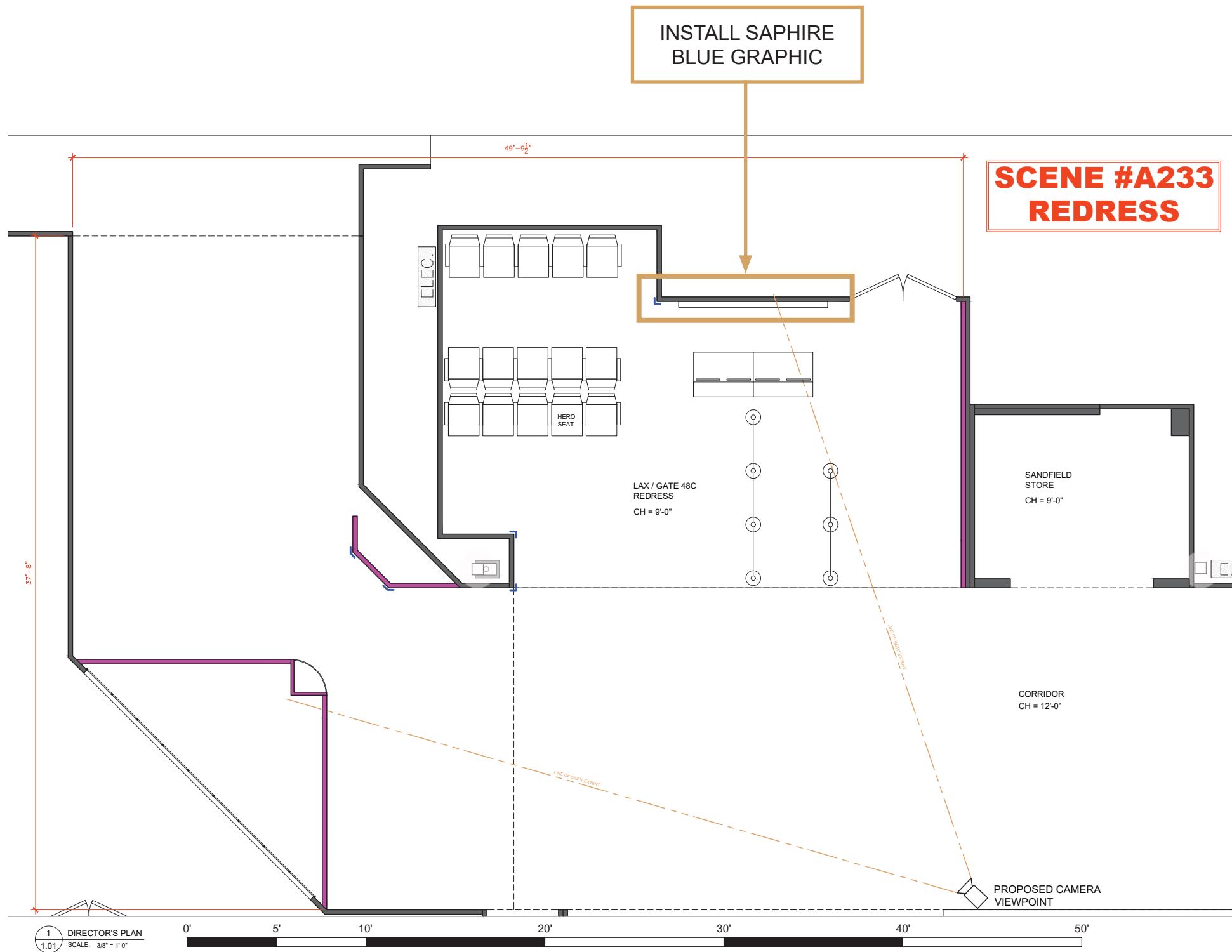
- CONST.
- LOCS.
- SET DEC
- GREENS
- PROPS
- SCENIC



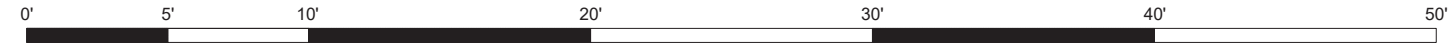
	SET INT JFK - TERMINAL	SC 847,802,D827,E827		SHOOTS DAY 5	Pg. 17
	LOCATION Stage 2 - 6115 Edwards Blvd, Mississauga	EP 8	D/N D	SET# 102	

ART DEPARTMENT LOCATION NOTES

ART/GFX	
CONST.	
LOCS.	
SET DEC	
GREENS	
PROPS	
SCENIC	
SPX/VFX/STUNTS	
TRANSP	



1 DIRECTOR'S PLAN
SCALE: 3/8" = 1'-0"

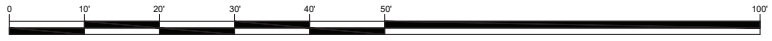
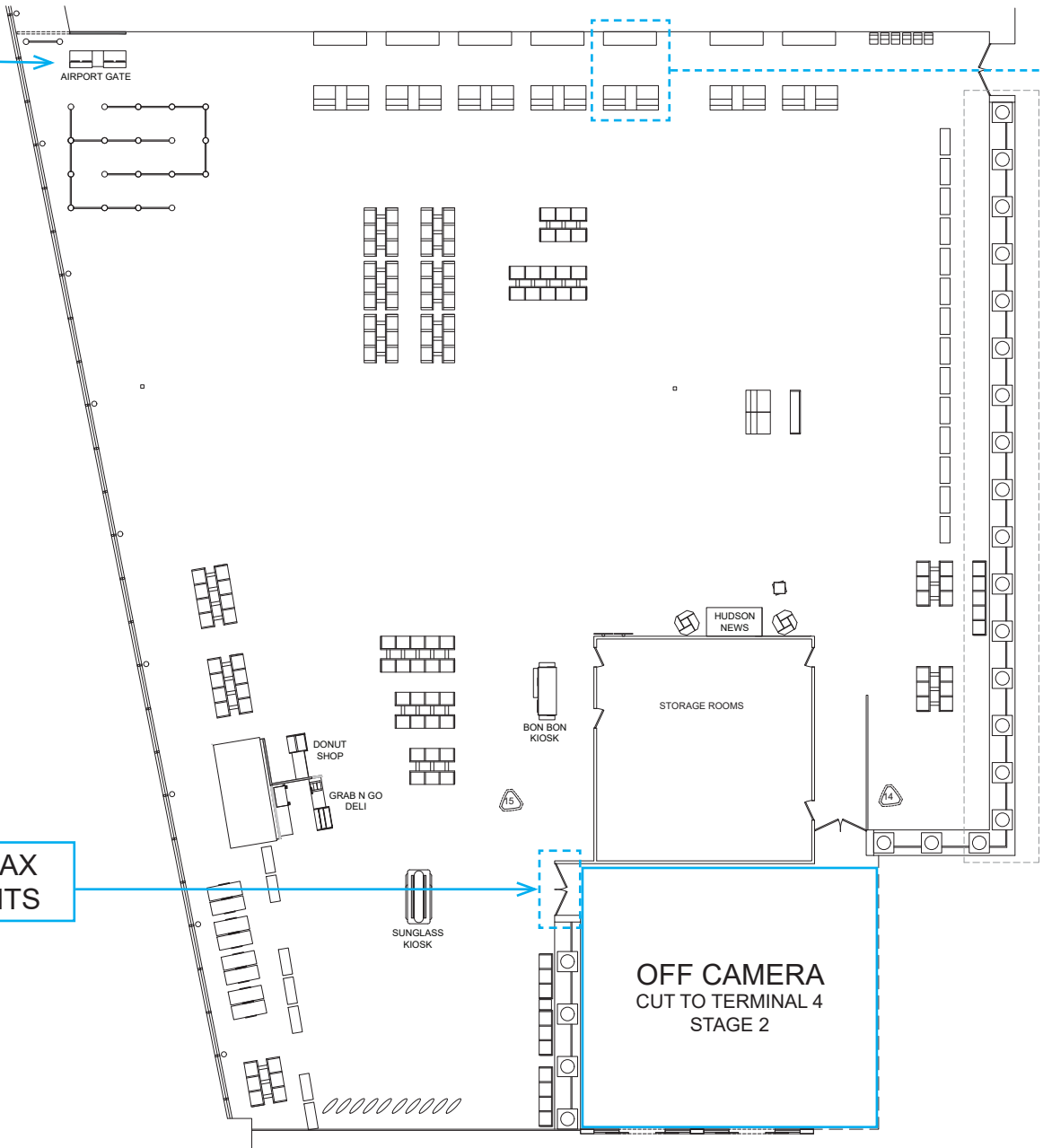


	SET INT LAX - GATE 48C	SC A233 PT 1		SHOOTS DAY 7	Pg. 13
	LOCATION 6115 Edwards Blvd - Stage 2	EP 2	D/N	SET# 121	

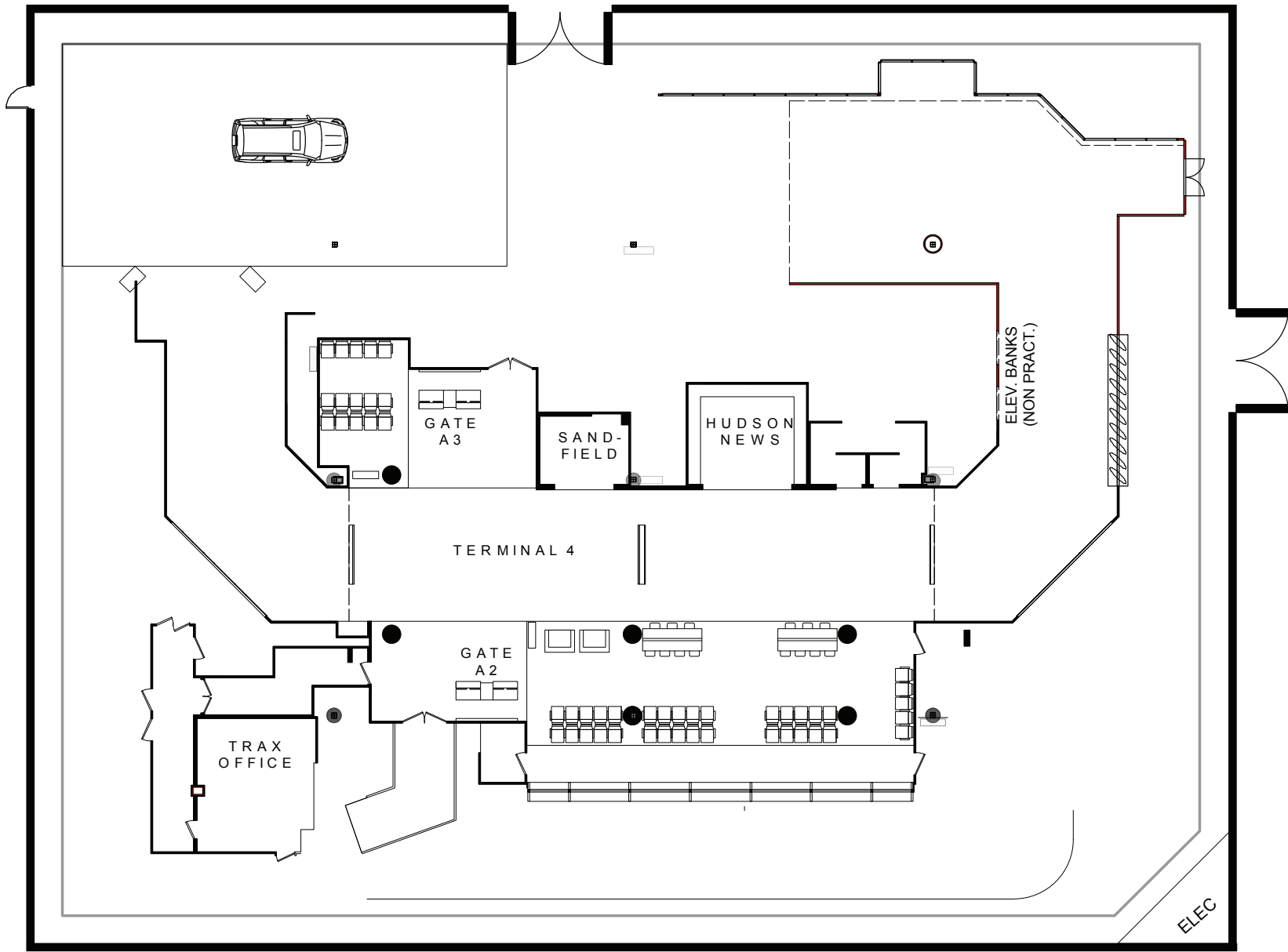
HERO DESK
SC617

HERO DESK
SC405

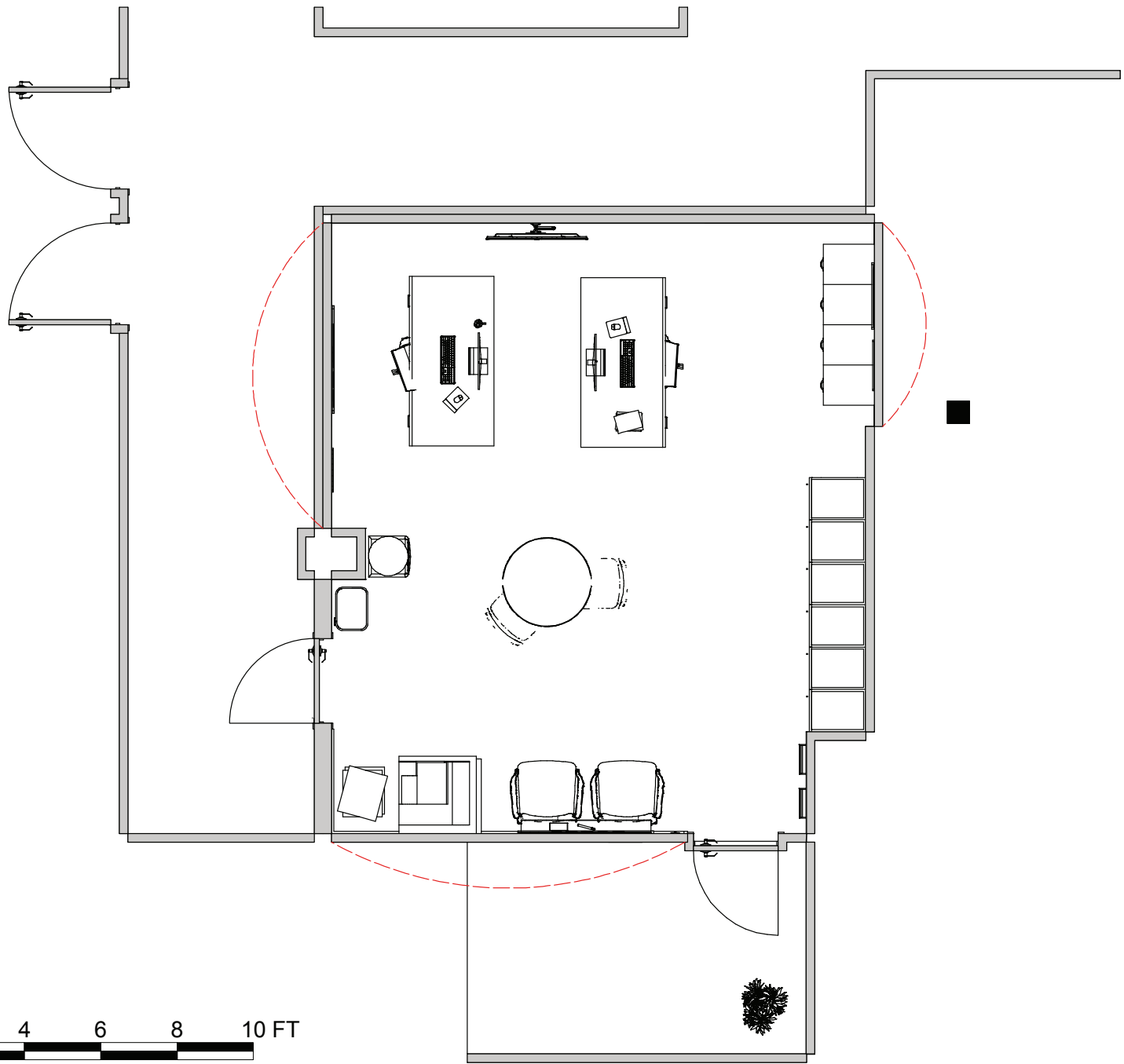
TRAX
EXITS




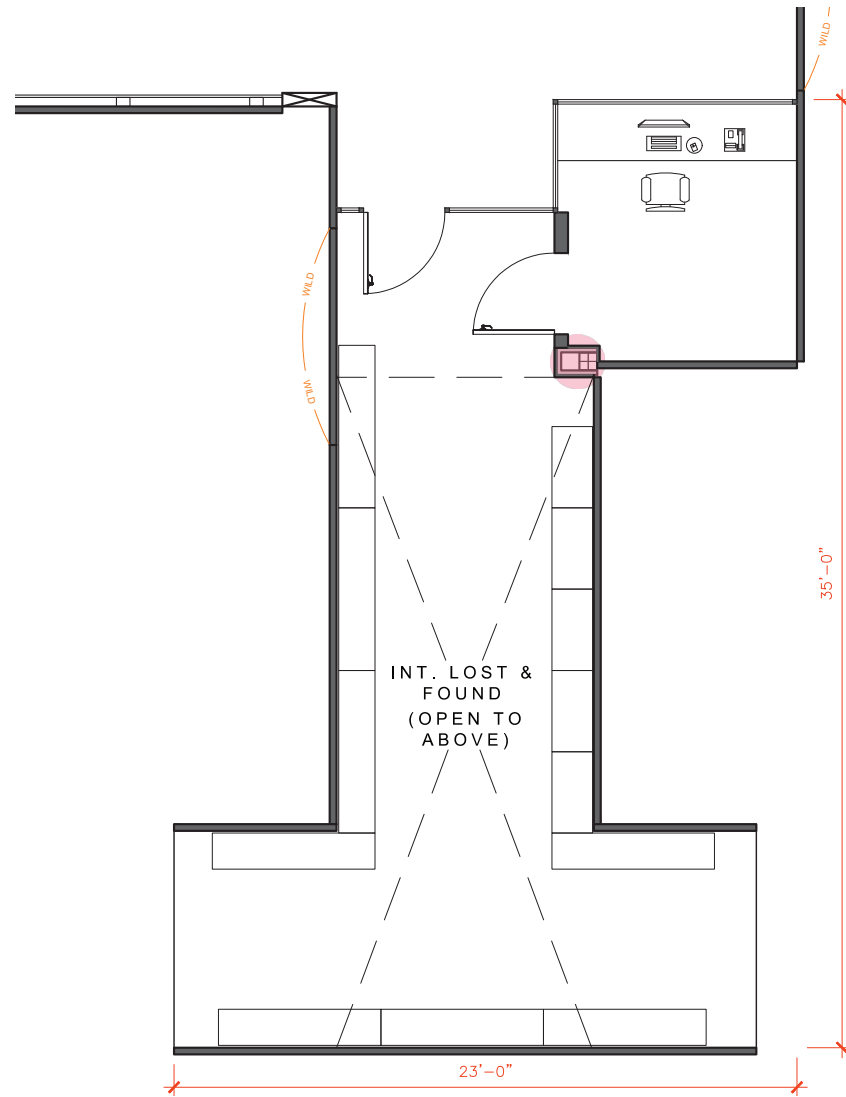
	SET INT JFK - TERMINAL 4 LOCATION	SC 603,611,407pt1,405,617pt1,a404		SHOOTS DAY 6	Pg. 2
	LOCATION Pearson International Terminal 1 - Mississauga	EP 4,6	D/N D	SET # 102	



	SET INT JFK - TERMINAL 4	SC A404,405,407,408,409,423,603,617,621,619		SHOOTS DAY 4,7	Pg. 7
	LOCATION Stage 2 - 6115 Edwards Blvd	EP 4,6	D/N D	SET # 102	

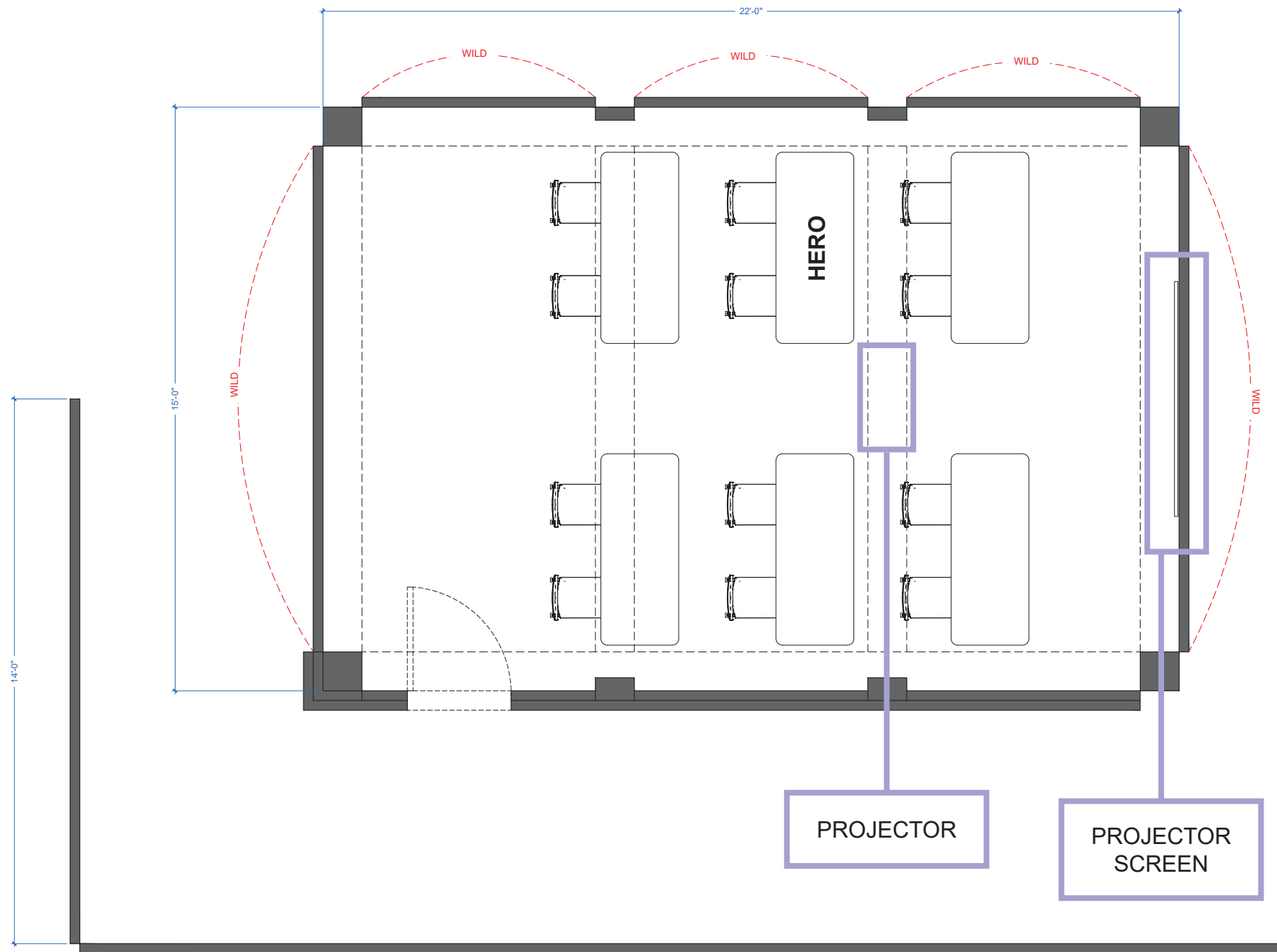


	SET INT JFK TRAX ASSIST	SC 406,411,619,620		SHOOTS DAY 1	Pg. 8
	LOCATION Stage 2 - 6115 Edwards Blvd.	EP 4,6	D/N D	SET # 111	



1 LOST & FOUND DIRECTOR'S PLAN
 1.08 SCALE: N.T.S

	SET INT JFK - LOST AND FOUND	SC 604,618pt1		SHOOTS DAY 3	Pg. 11
	LOCATION Stage 2 - 6115 Edwards Blvd.	EP 6	D/N D	SET # 602	



ART DEPARTMENT LOCATION NOTES	
ART/GFX	
CONST.	
LOCS.	
SET DEC	
GREENS	
PROPS -PROJECTOR AND PROJECTOR SCREEN	
SCENIC	
SPX/VFX/STUNTS	
TRANSP	

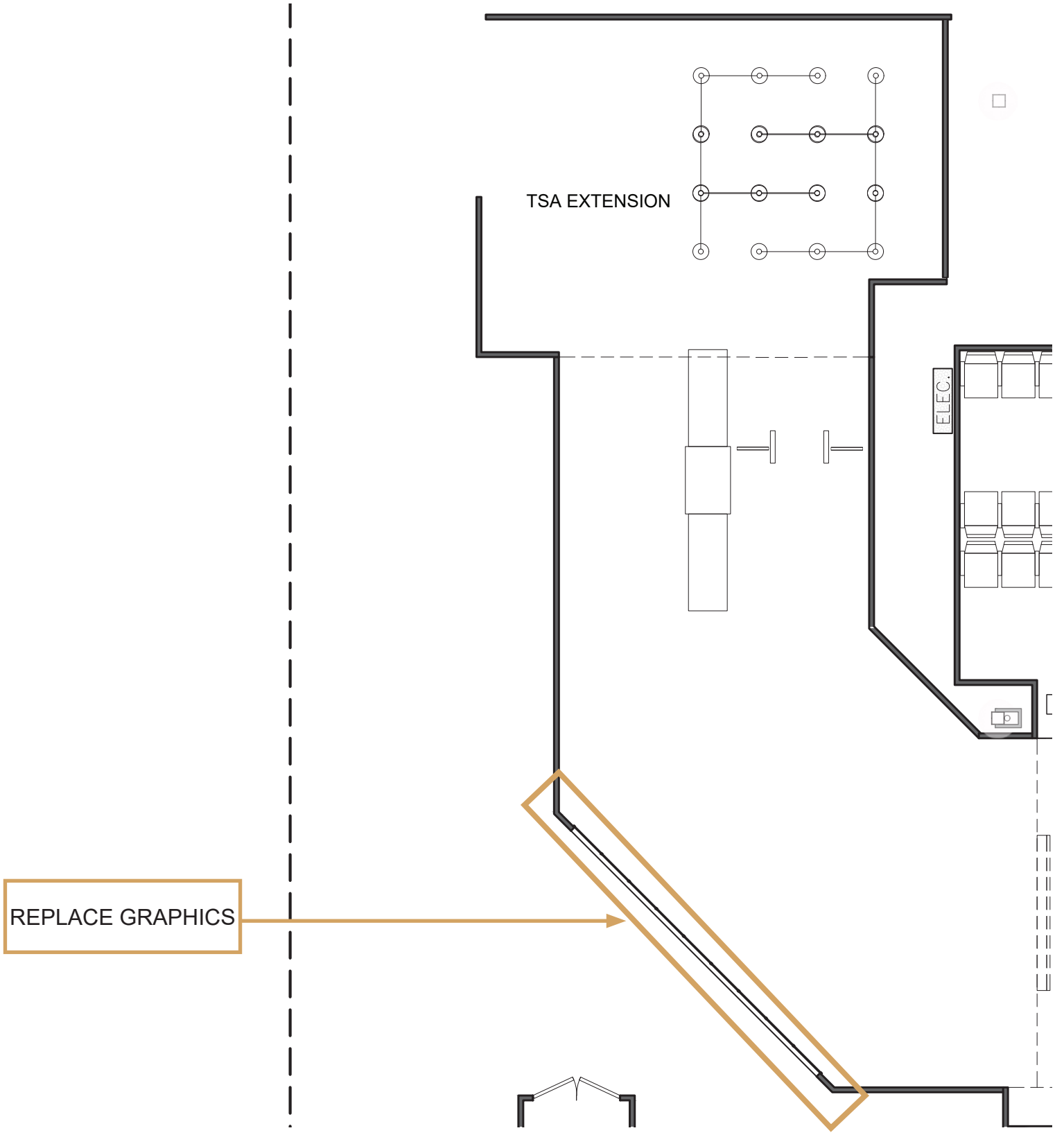
INT. MULTI-PURPOSE ROOM - FLOOR PLAN
1/8" = 1'-0"



	SET INT MULTIPURPOSE ROOM	SC 303,307,311,314,317,320		SHOOT DAY 9	Pg. 16
	LOCATION 6115 Edward's Blvd - Stage 3	EP 3	D/N D	SET# 302	

ART DEPARTMENT LOCATION NOTES

ART/GFX	
CONST. -WHITE AS MAIN GFX & BLACK FOR TSA SCENE	
LOCS.	
SET DEC	
GREENS	
PROPS	
SCENIC	
SPX/VFX/STUNTS	
TRANSP	



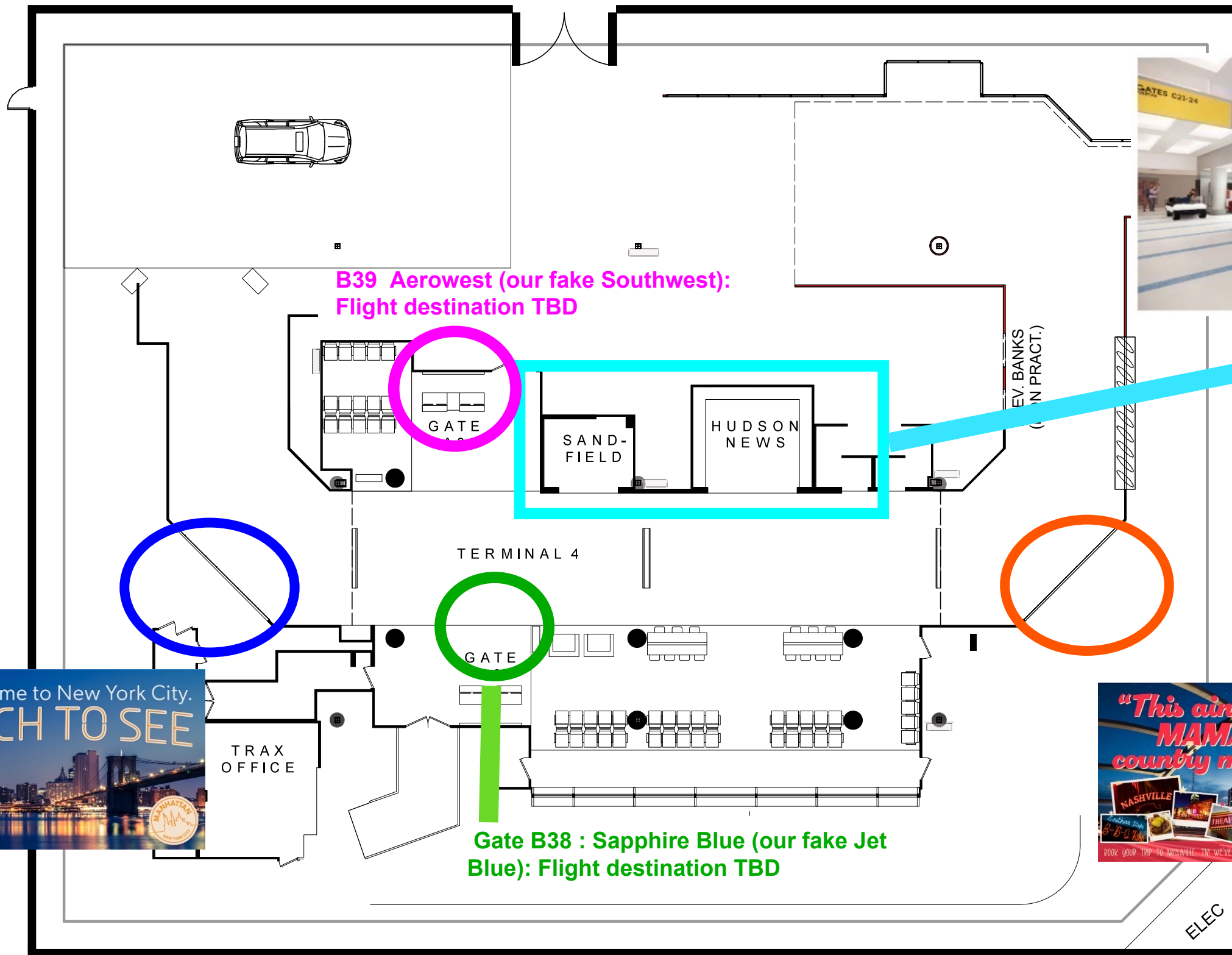
REPLACE GRAPHICS

	SET INT JFK - TSA SECURITY	SC 223,210		SHOOTS DAY 9	Pg. 15
	LOCATION 6115 Edwards Blvd - Stage 2 - Redress	EP 2	D/N D	SET# 108	



	SET EXT JFK TARMAC	SC 424,609,614		SHOOTS DAY 1,5	Pg. 18
	LOCATION Backlot - 6115 Edwards Blvd.	EP 4,6	D/N D	SET # 113	

BLOCK 4 | DAY 7



Hudson and Sandfield covered with construction hoarding

NEW Backlit Panel: NY There's so Much to See



Backlit Panel: Nashville



	SET INT JFK - TERMINAL 4	SC A404,405,407,408,409,423,603,617,621,619	SHOOTS DAY 4,7	Pg. 11
	LOCATION Stage 2 - 6115 Edwards Blvd	EP 4,6	D/N D	

HOW TO DIE ALONE

SEASON 1
 PRODUCTION DESIGNER: ALMITRA COREY
 ART DIRECTOR: ALEKS CAMERON

- NOTES
- ALL DEPARTMENTS ARE TO CONFIRM ACTUAL BUILD MEASUREMENTS BEFORE COMMENCING WORK, WHERE APPLICABLE

ISSUED
 MARCH 29, 2023

REVISIONS:

No.	Revisions/issue	Date

SET NAME:

INT. BOWELS

DRAWING NAME:

B2-B3 FLOOR PLAN

LOCATION:

6115 EDWARDS BLVD - MISSISSAUGA

PAPER SIZE: **24X36**

DATE: **MARCH 29, 2023**

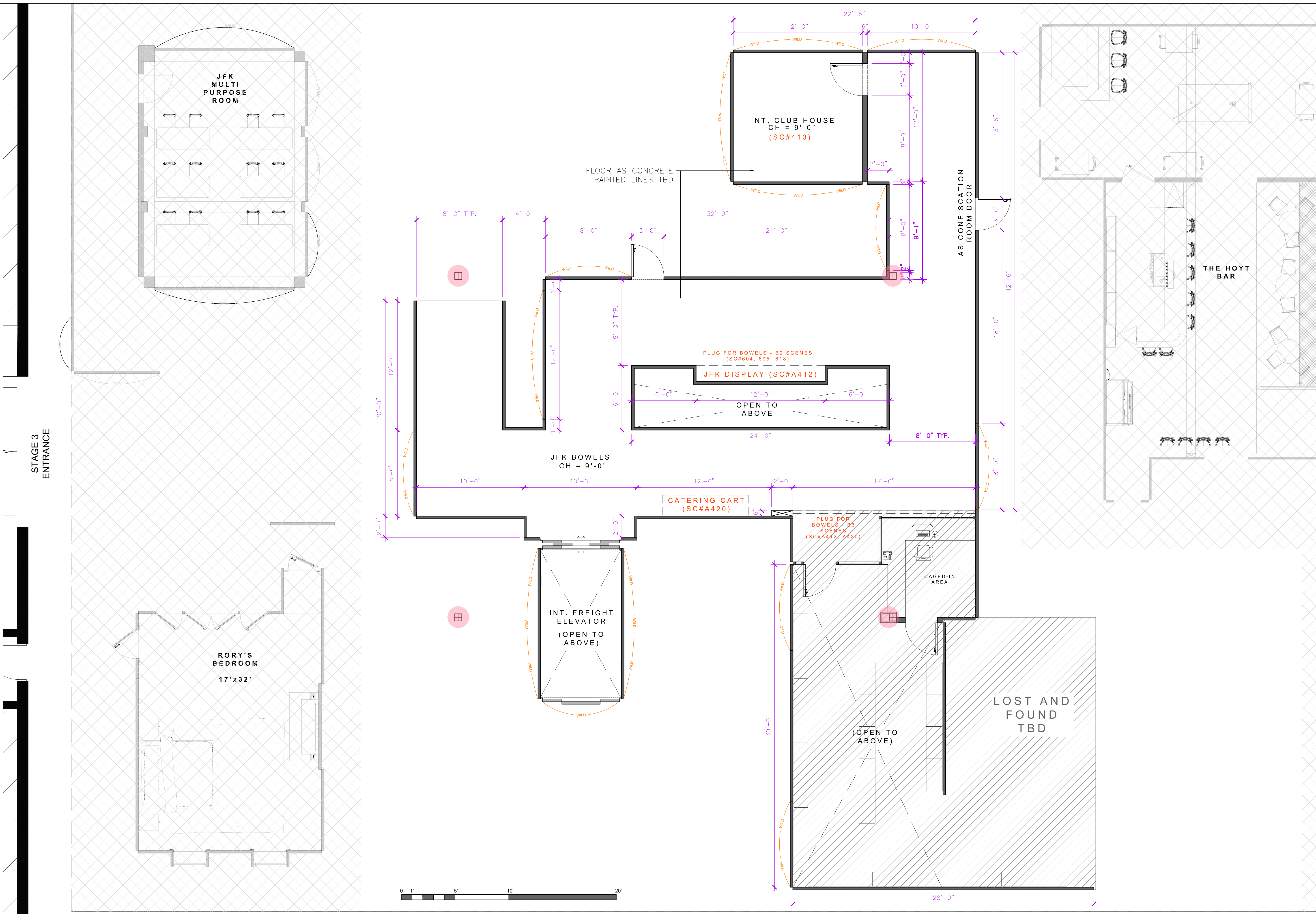
DRAWN BY: **ES**

SCALE: **1/4" = 1'-0"**

SET NUMBER:

DRAWING NUMBER:

210 1.03



1 B2-B3 FLOOR PLAN
 1.03 SCALE: 1/4" = 1'-0"

LEGEND

	FIXED WALL		LATER WORK (TBD)
	COLUMN PROXIMITY		ELECTRICAL HUB



V1 - VIEW OF ELEVATOR AND HALL

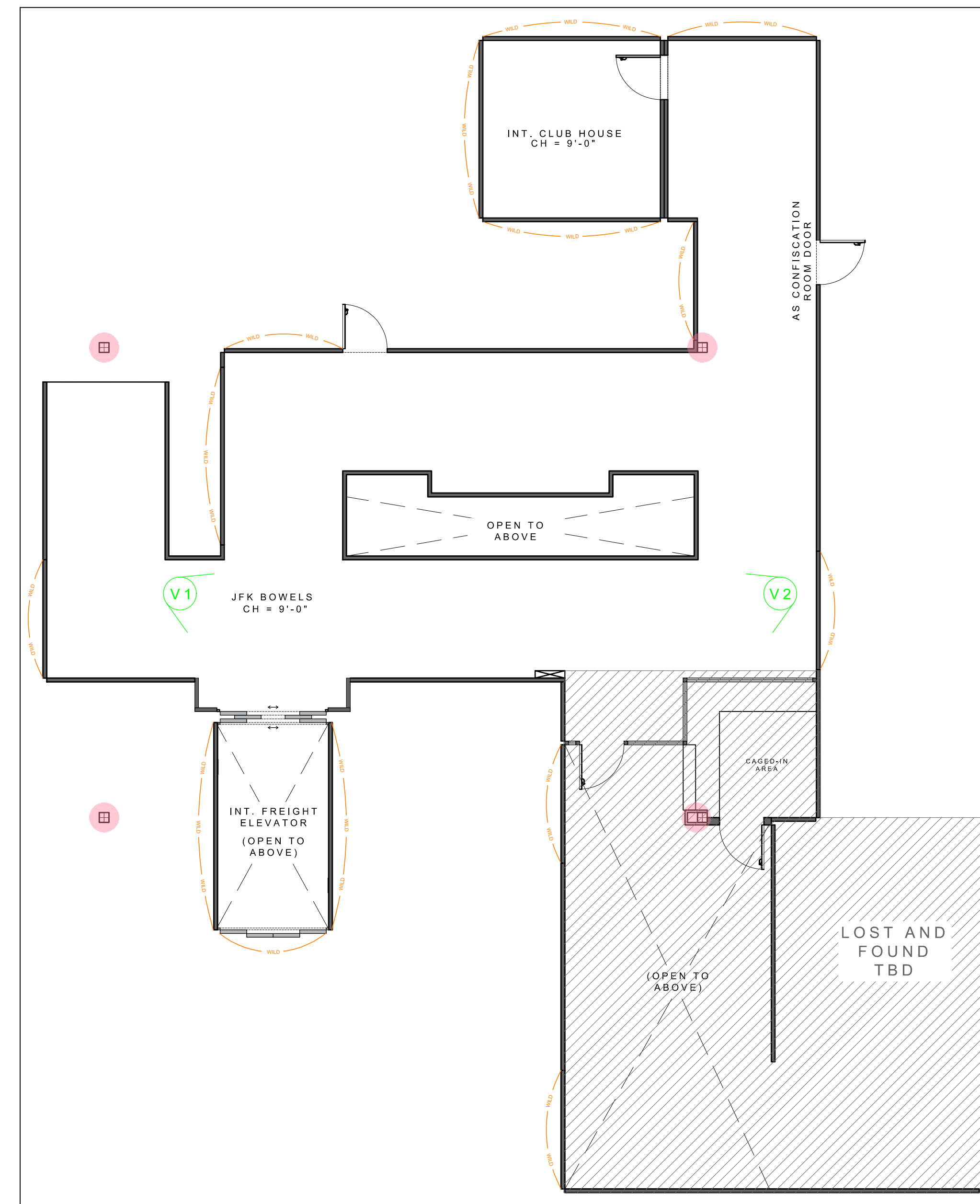


V2 - VIEW OF LOST & FOUND CAGE AND HALL

***ALL RENDERINGS ARE FOR CONCEPTUAL PURPOSES ONLY**

NOTES

- **CEILING LIGHTS TBD**
- **BUMPER DETAILS TBD**
- **WALL PANEL DETAILS TBD**



KEY PLAN - N.T.S

NOTES

ISSUED
 MARCH 29, 2023

REVISIONS:

No.	Revisions/issue	Date

SET NAME:
INT. BOWELS

DRAWING NAME:
RENDERINGS

LOCATION:
6115 EDWARDS BLVD - MISSISSAUGA

PAPER SIZE: **24X36**

DATE: **MARCH 29, 2023**

DRAWN BY: **ES**

SCALE: **N.T.S**

SET NUMBER:

DRAWING NUMBER:

210 1.04

INT. THE BOWELS
HOW TO DIE ALONE - SEASON 1



INT. THE BOWELS - THE OFFICE
HOW TO DIE ALONE - SEASON 1



INT. THE BOWELS
HOW TO DIE ALONE - SEASON 1



INT. THE BOWELS - THE LOST AND FOUND
HOW TO DIE ALONE - SEASON 1



INT. THE BOWELS - THE LOST AND FOUND
HOW TO DIE ALONE - SEASON 1



INT. THE BOWELS - THE LOST AND FOUND
HOW TO DIE ALONE - SEASON 1

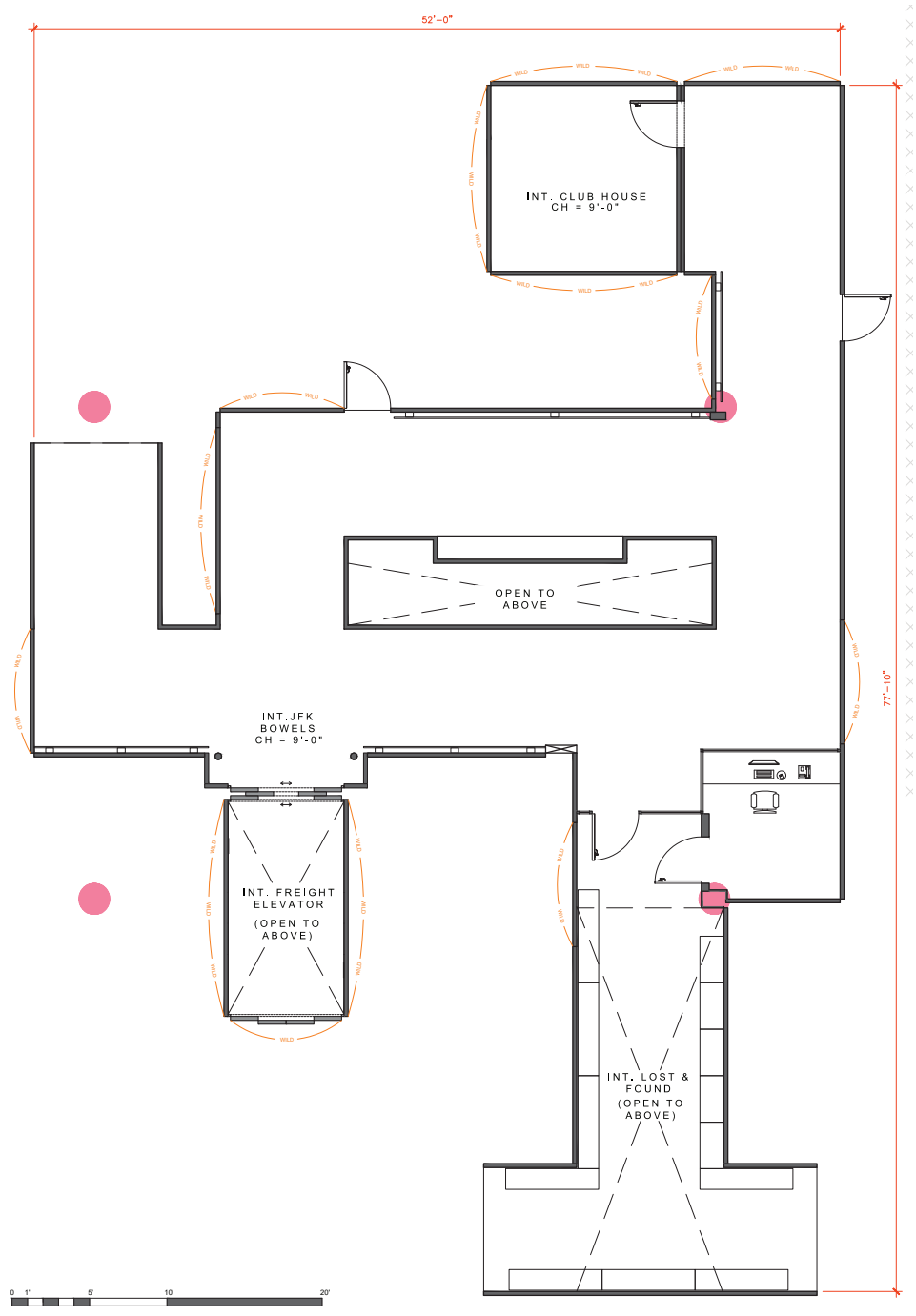


INT. THE BOWELS
HOW TO DIE ALONE - SEASON 1

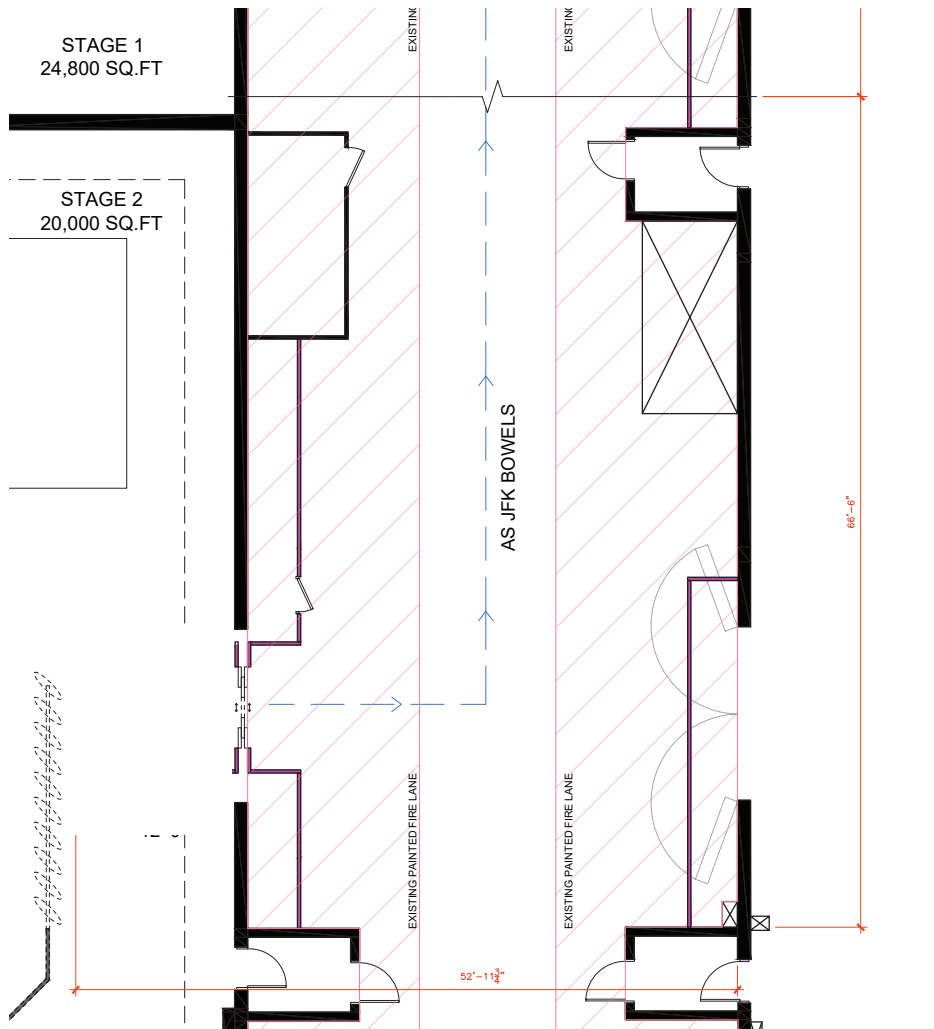


INT. THE BOWELS
HOW TO DIE ALONE - SEASON 1

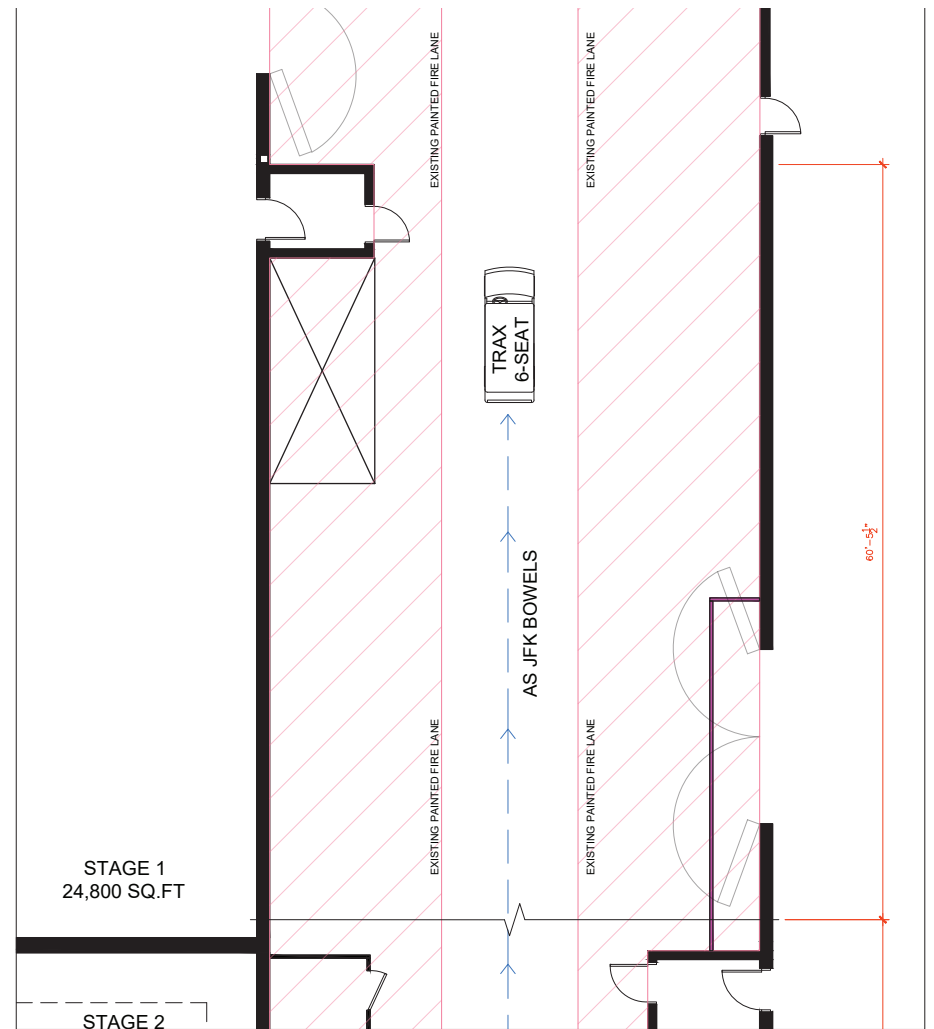




	SET INT JFK BOWELS	SC A412pt1,A420,605,616pt1	SHOOTS DAY 5	Pg. 13
	LOCATION Stage 3 - 6115 Edwards Blvd.	EP 4,6	D/N D	



1 DIRECTOR'S PLAN - PART A
SCALE: 3/16" = 1'-0"



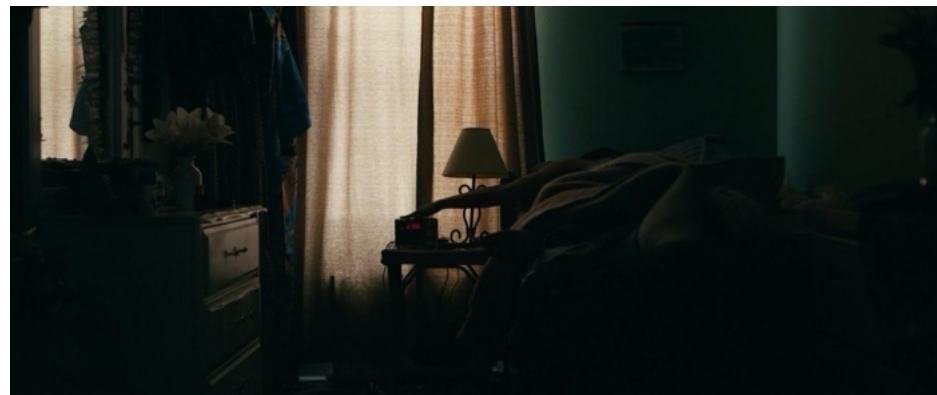
2 DIRECTOR'S PLAN - PART B
SCALE: 3/16" = 1'-0"

	SET INT JFK BOWELS (BREEZWAY)	SC A412pt2,621		SHOOTS DAY 9	Pg. 16
	LOCATION Stage 3 - 6115 Edwards Blvd.	EP 4,6	D/N D	SET # 210	

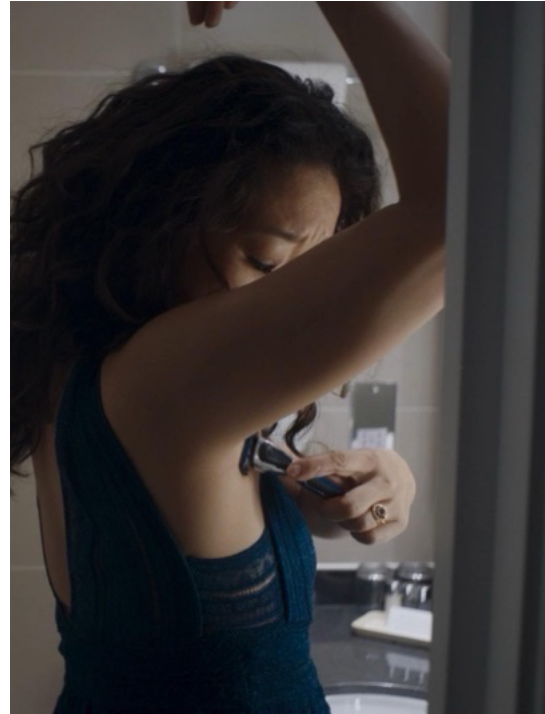
MELISSA'S APARTMENT

MEL'S APT IS COZY WITH GOOD LIGHT AND GREAT BONES BUT IT'S SPARSELY DECORATED AND NOT THE MOST TIDY. THERE ARE PROJECTS HALF STARTED, MAYBE A PAINT SAMPLE OR TWO ON A WALL SHE NEVER FINISHED. SHE'S GOT A MIX OF VINTAGE FURNITURE AND IKEA PIECES, BUT THE POINT IS THAT IT DOESN'T FEEL LIKE A HOME SHE'S QUITE SETTLED INTO EVEN AFTER LIVING THERE NEARLY 10 YEARS (I'M PROJECTING!)







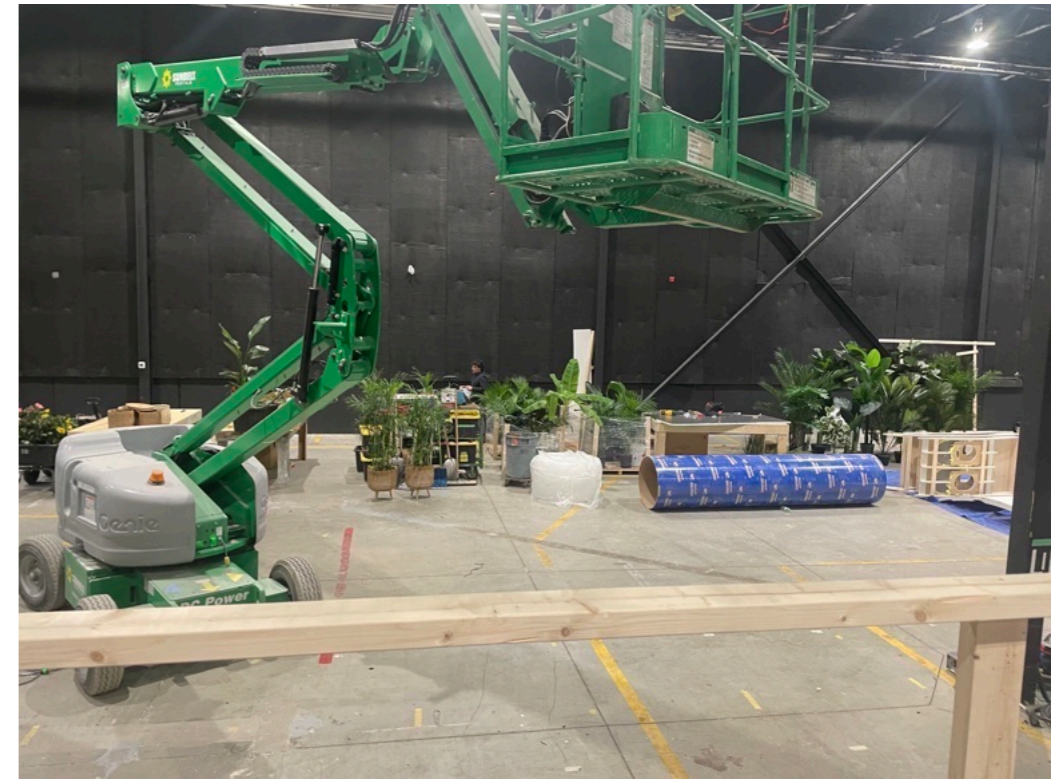


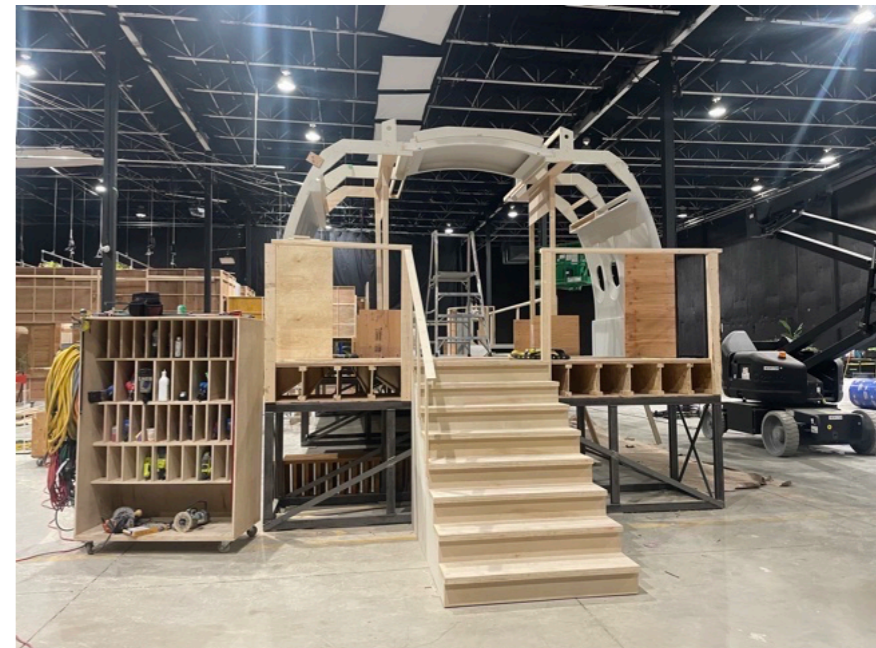


THERE'S THE POTENTIAL TO INTRODUCE POPS OF COLOR THAT CAN GROW OR SHRINK ALONG WITH MEL.



AIRPLANE SIMULATOR & HAWAIIAN WEDDING FANTASY







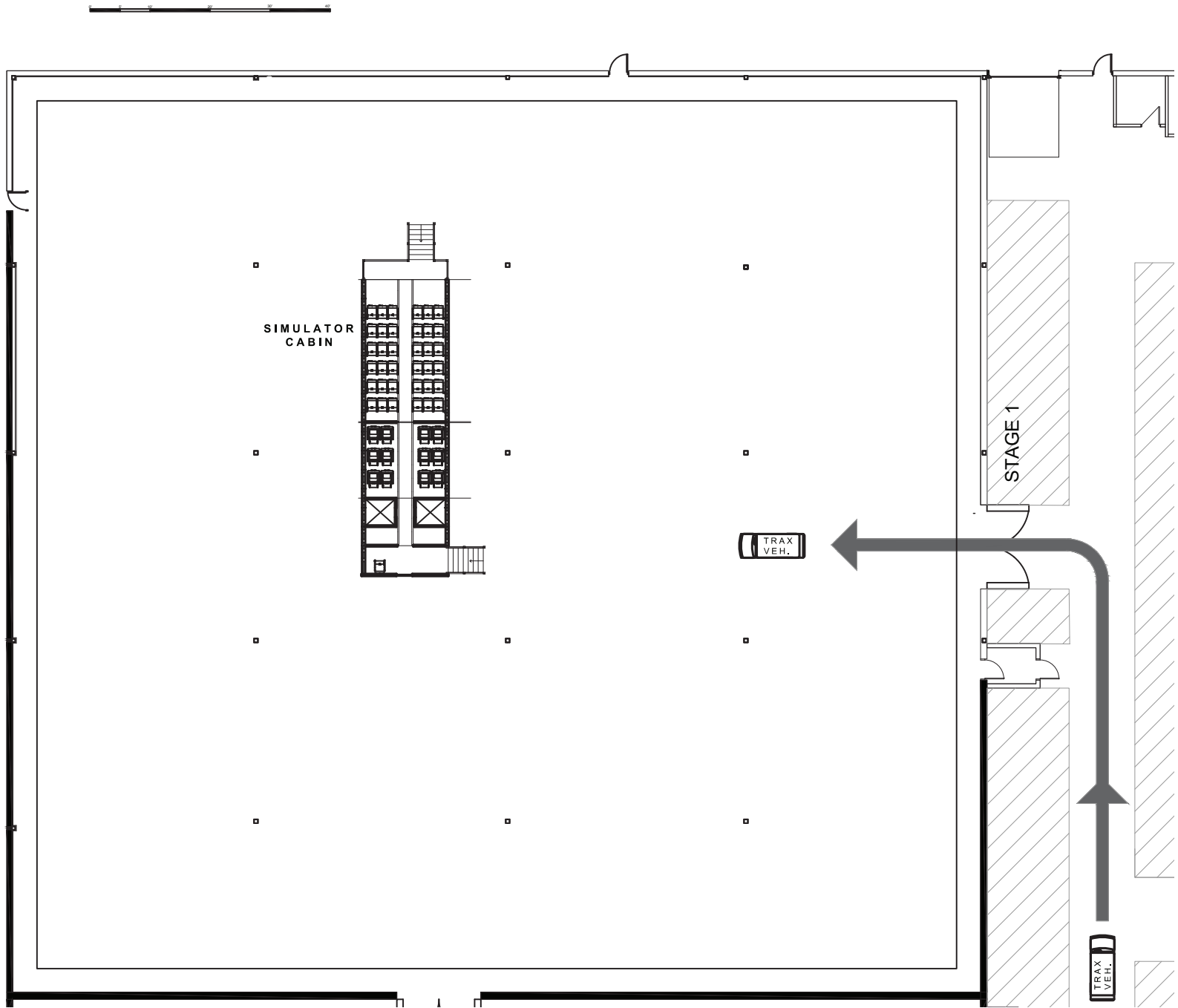




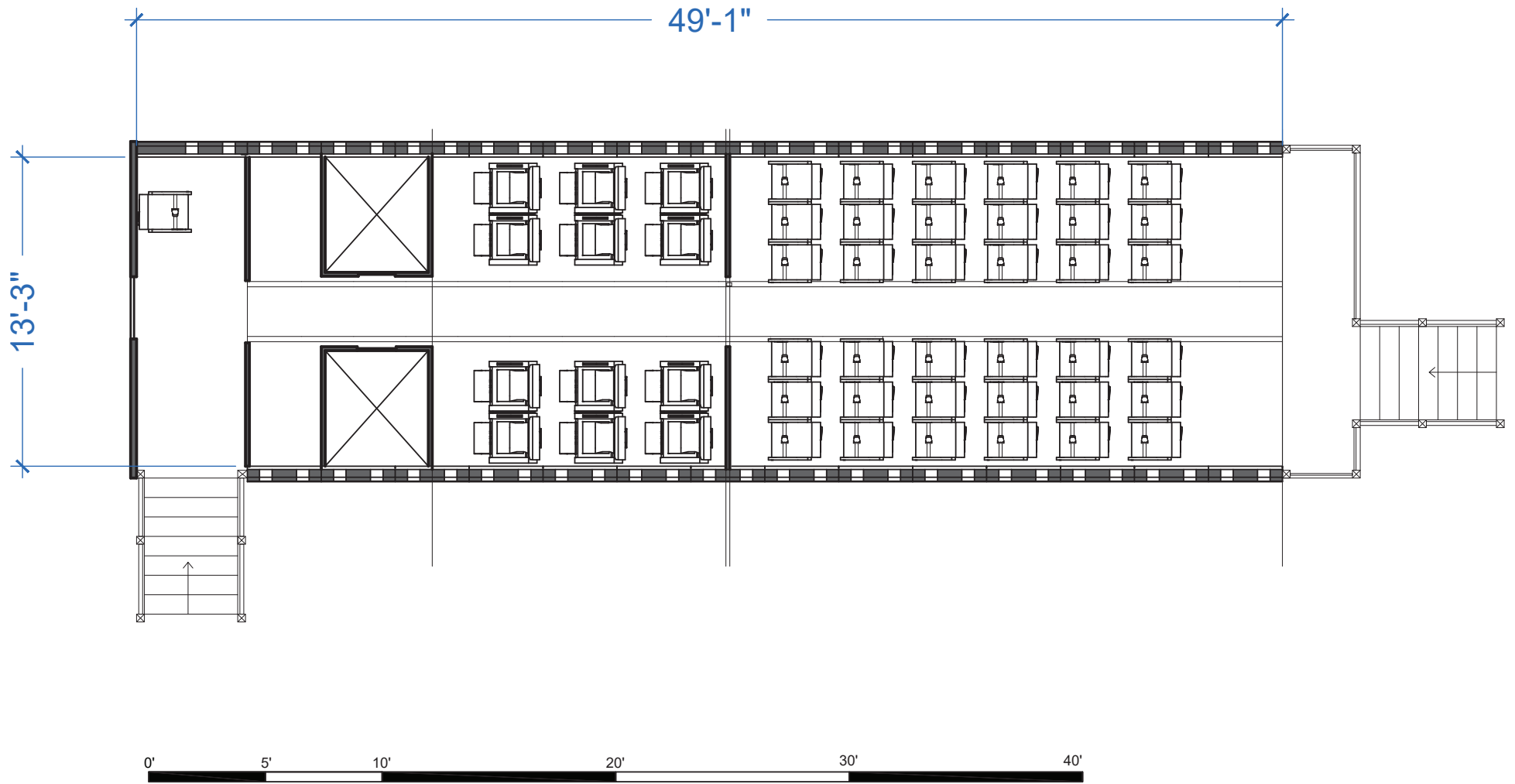









	SET INT JFK - HANGAR FIVE	SC 622,A624		SHOOTS DAY 9	Pg. 4
	LOCATION Stage 1 - 6115 Edwards Blvd	EP 6	D/N D	SET # 606	



	SET INT SIMULATOR CABIN	SC 623		SHOOTS DAY 9	Pg. 5
	LOCATION Stage 1 - 6115 Edwards Blvd	EP 6	D/N D	SET # 607	

HUMANS OF NEW YORK



MOMENTS OF MAGICAL REALISM



