



UNDER THE BRIDGE

EP 101: Looking Glass
Production Designer: Jennifer Morden

CONTENTS

Seven Oaks Studio Build - AMORT	3-10
Virk House Studio Build - AMORT	11-14
Police Station Studio Build - AMORT	15-18
Godfrey House Studio Build & Location - AMORT	19-20
Connor Field's House Studio Build & Location - AMORT	21-22
Rebecca's NYC Apt Studio Build - EP 101	23-24
Craigflower Bridge Location	25
Victoria Law Courts Studio Build - Various Episodes	26-27

Seven Oaks_EXT Location & INT Studio Build

2-Story Victorian house build with a connection staircase



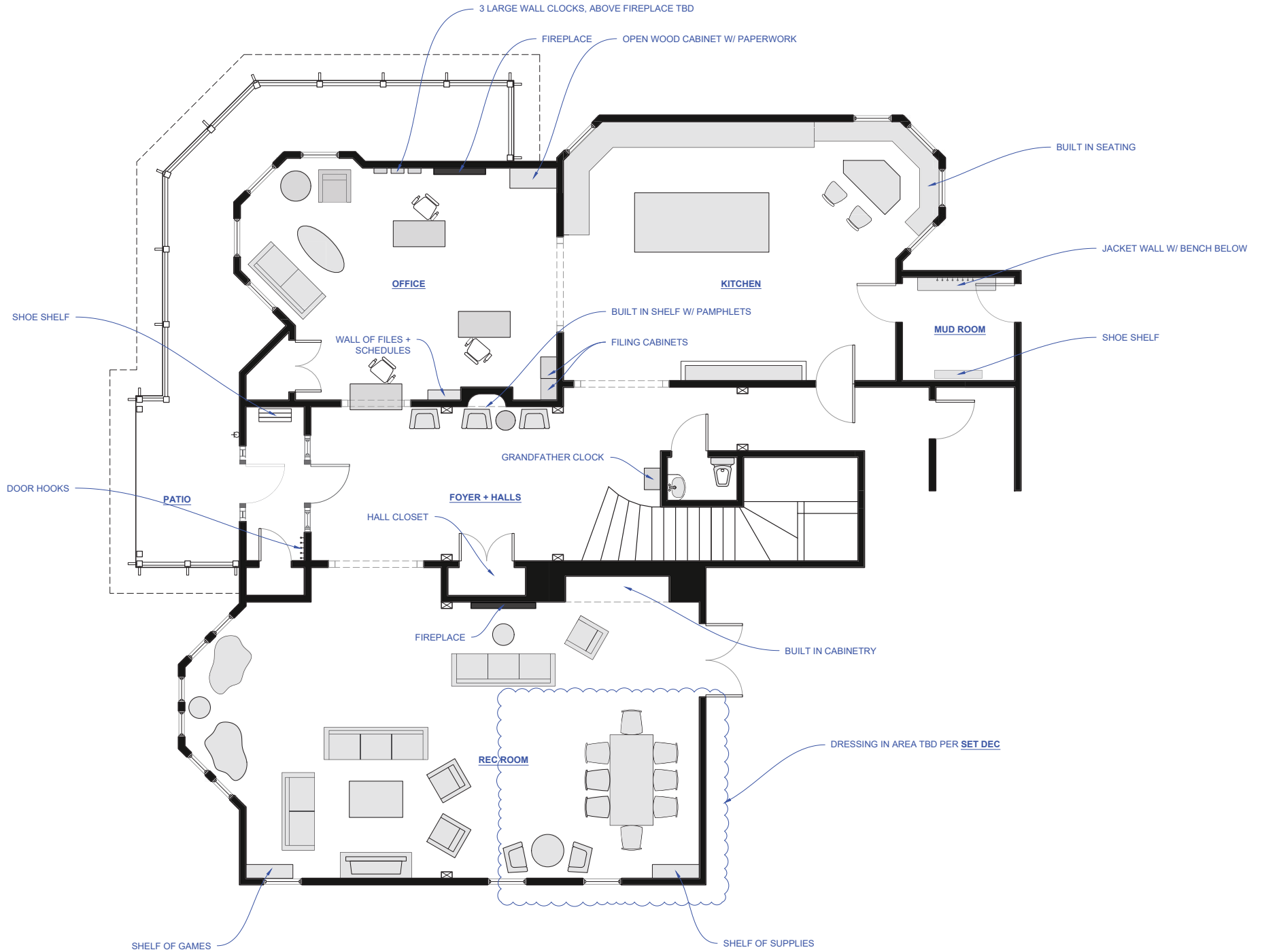
Seven Oaks_Ext Location



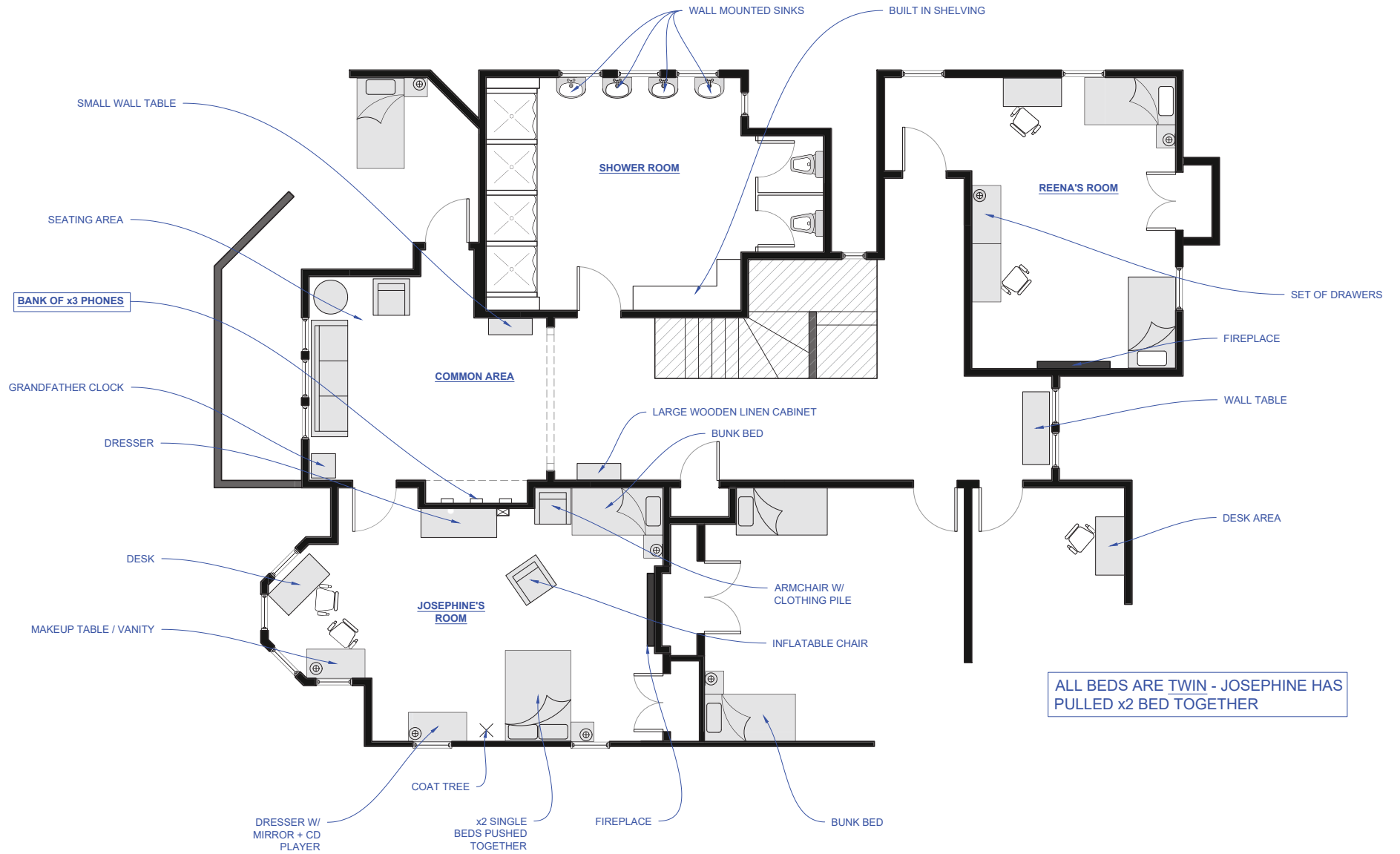
Seven Oaks_Concept Art by Aurora Kruk



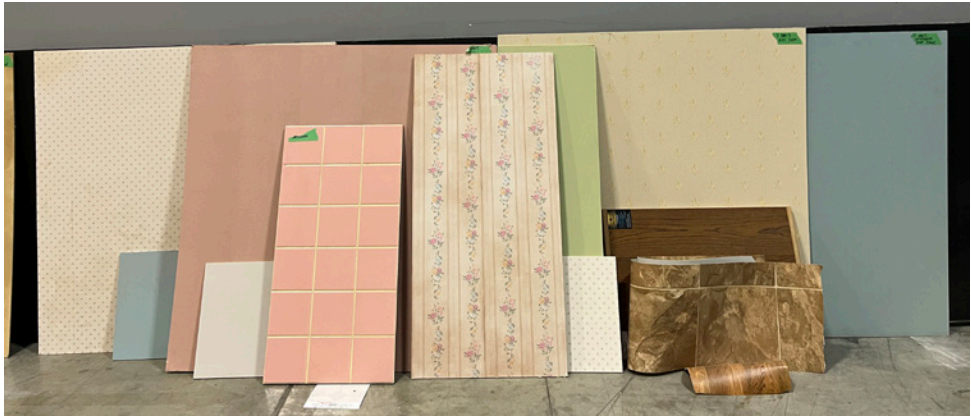
Seven Oaks_1st Floor Plans - Set Design by Daniel Kobyłka



Seven Oaks_2nd Floor Plans - Set Design by Daniel Kobyłka



Seven Oaks_Build Photos



Seven Oaks_1st Floor Set Photos

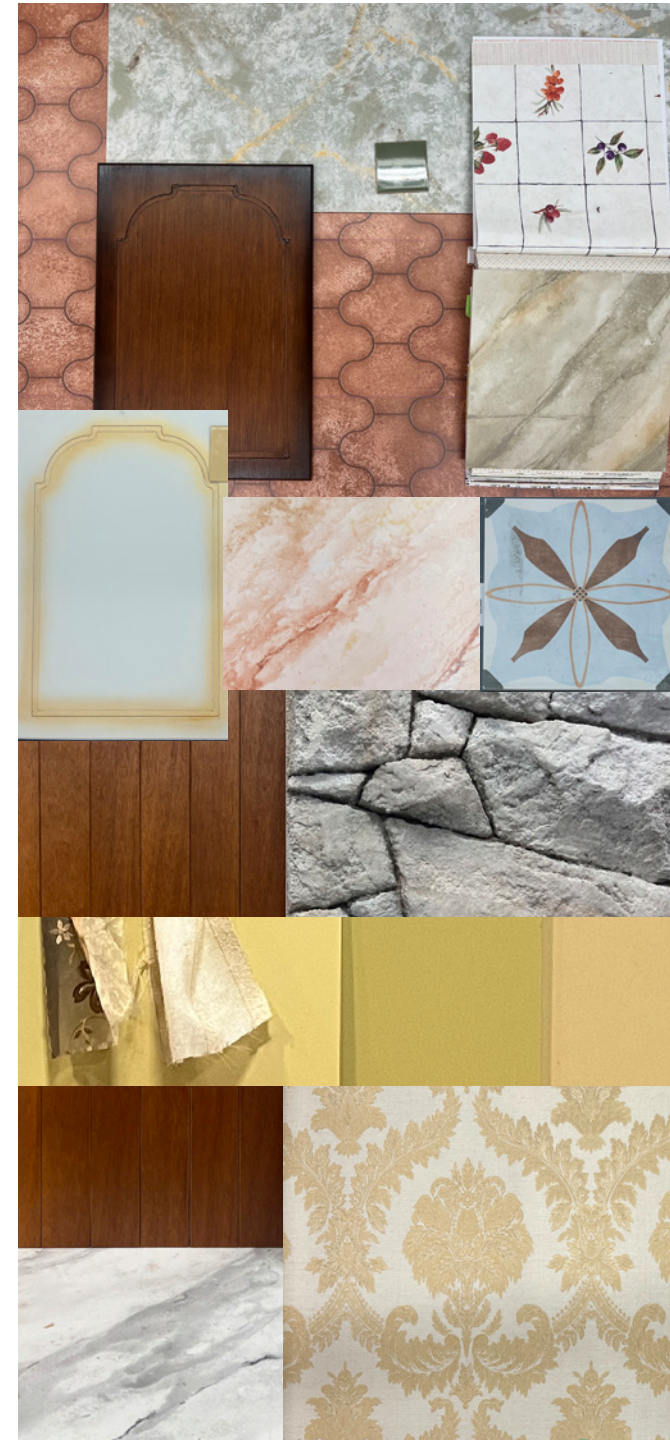


Seven Oaks_2nd Floor Set Photos

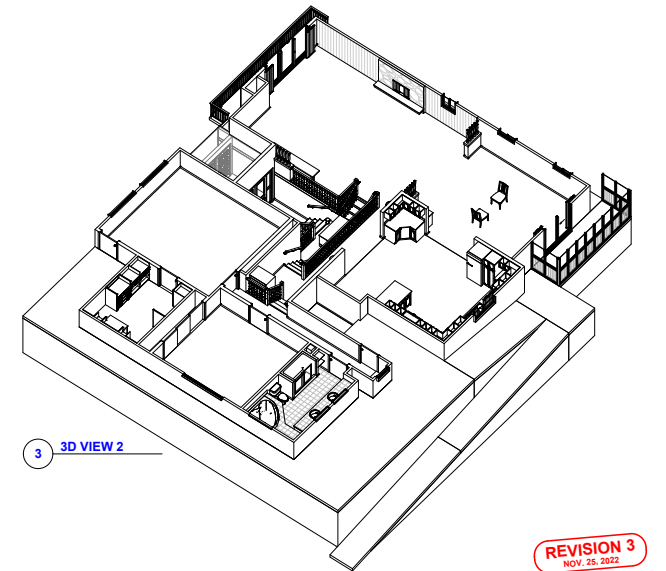
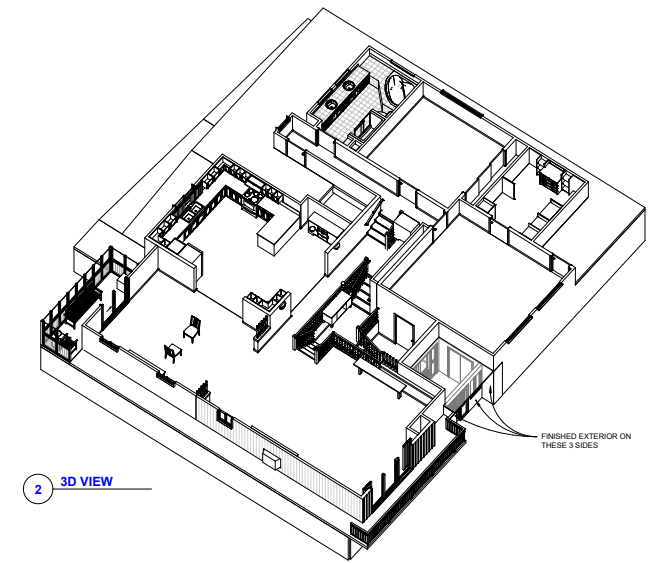
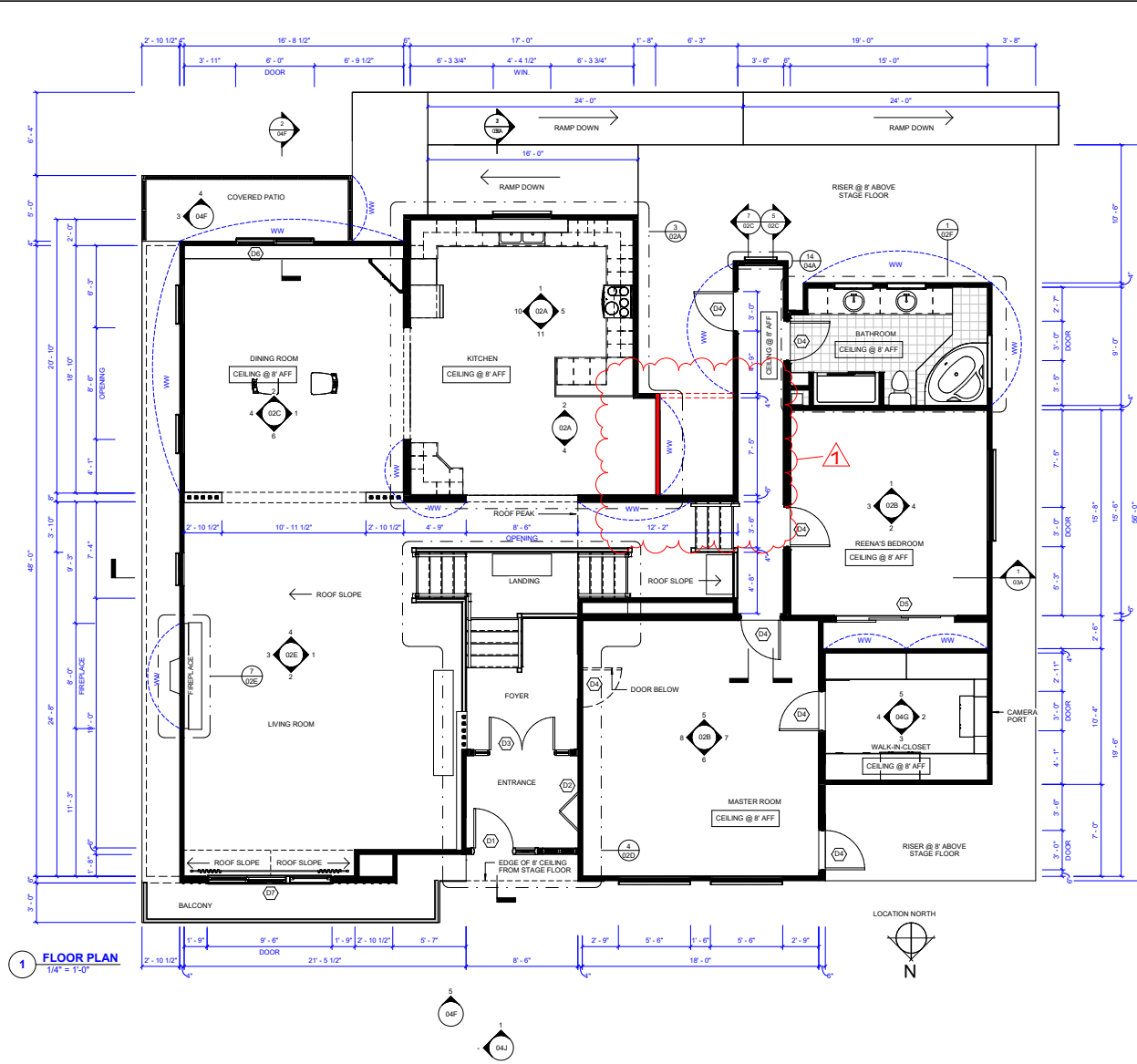


Virk House_Concept Art by Aurora Kruk - STUDIO BUILD

1960s Vancouver Special



Virk House_Set Design by Codey Falkenberg



REVISION 3
NOV. 25, 2022

DESCRIPTION	REV	DATE
Wall Removed, Wall Made Wild	1	NOV. 25

N.B. - ALL DIMENSIONS IN FEET - INCHES
- FRONT OF HOUSE WILL BE FINISHED. AREA TO BE FINISHED WILL DEPEND ON LOCATION

ATTENTION!
IF THIS SQUARE IS NOT 7' x 3' 1" THE DWG IS NOT TO SCALE

UNDER THE BRIDGE

PRODUCTION DESIGNER: JENNIFER MORDEN
ART DIRECTOR: BRAD KARSGAARD
DIRECTOR: GEETA PATEL

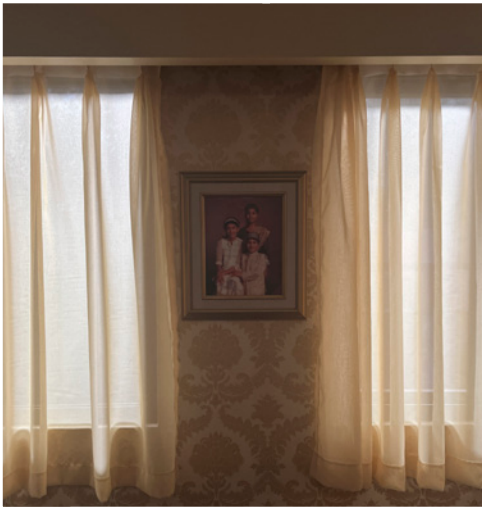
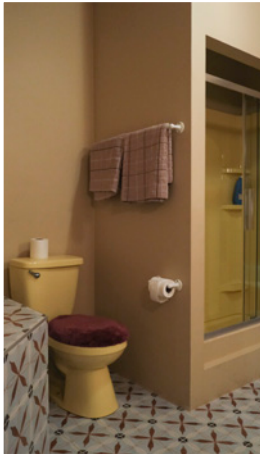
SET NAME: VIRK HOUSE
DRAWING TITLE: MAIN FLOOR PLAN
LOCATION: 20311 FRASERWOOD WAY, RICHMOND, BC
DRAWN BY: C. FALKENBERG
SCALE: AS NOTED

DATE: 10/21/22
DPA: 101
SET # 001
DRAWING # 01A

Virk House_Set Photos



Virk House_Set Photos



Saanich Police Department_Bullpen, Offices, Holding Hall, Jail Cells - STUDIO BUILD

2-Floor Police Department - 1950's build, with a renovation done in the mid 1970s



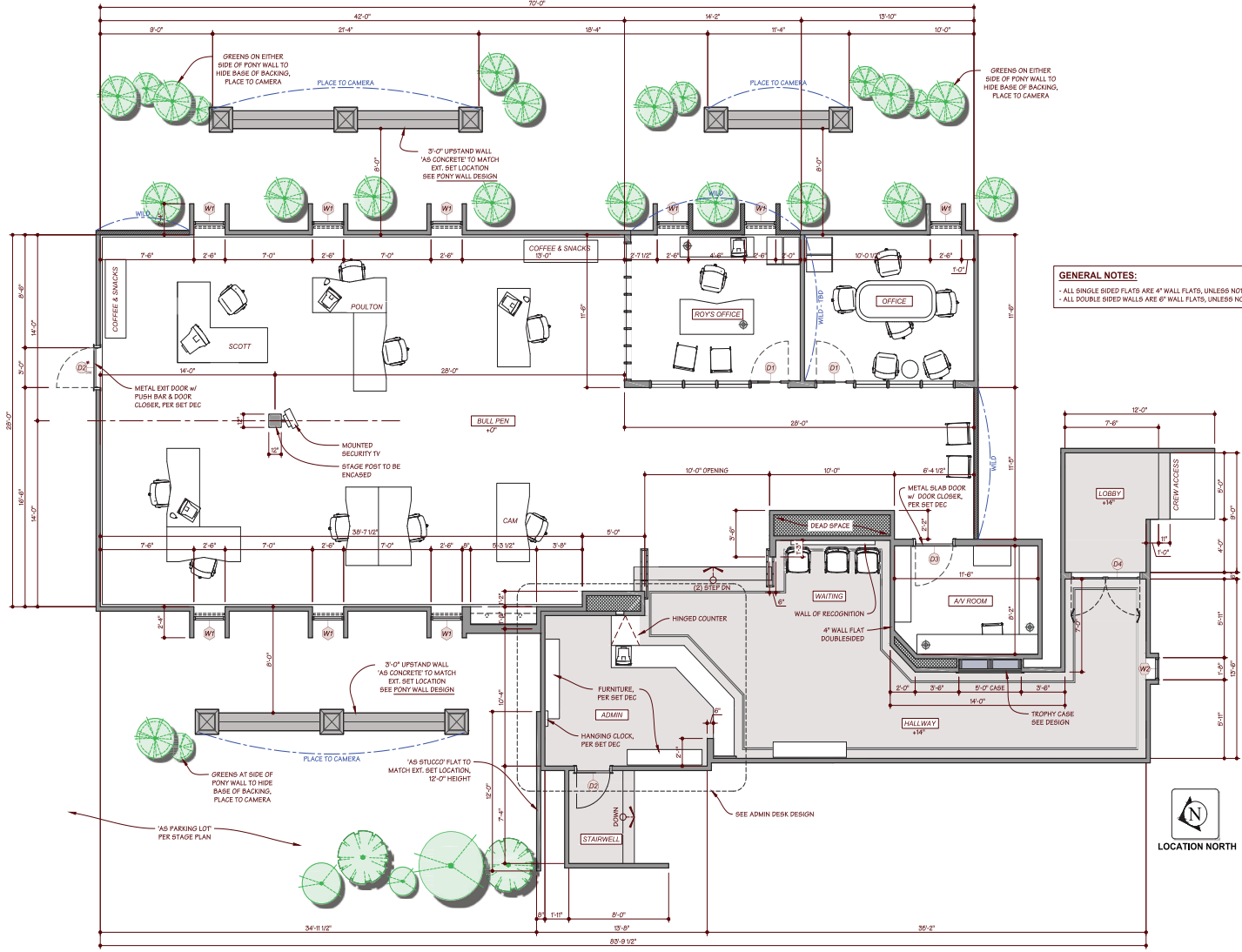
Saanich Police Department - Set Design by: Kyle White

DOOR SCHEDULE				
TAG	QUANTITY	WIDTH x HEIGHT	THICKNESS	NOTES
D1	x2	3'-0" x 7'-0"	1-3/4"	OFFICE DOORS, WOOD, GLAZED
D2	x2	3'-0" x 7'-0"	1-3/4"	METAL DOOR, GLAZED
D3	x1	3'-0" x 7'-0"	1-3/4"	SLAB DOOR, METAL
D4	x1	6'-0" x 7'-0"	1-3/4"	STOREFRONT DOUBLE DOORS

* WIDTHS AND HEIGHTS ARE DEFINED FROM INSIDE FINISHED FRAME.

WINDOW SCHEDULE				
TAG	QUANTITY	WIDTH x HEIGHT	SELL HEIGHT	NOTES
W1	x9	2'-0" x 5'-7"	3'-0"	ARCHED WINDOW, RECESSED, TO MATCH EXT. SET LOCATION
W2	x1	2'-0" x 5'-0"	2'-0"	STAIN GLASS WINDOW

* WIDTHS AND HEIGHTS ARE DEFINED FROM INSIDE FINISHED FRAME.



GENERAL NOTES:
 - ALL SINGLE SIDED FLATS ARE 4" WALL FLATS, UNLESS NOTED OTHERWISE
 - ALL DOUBLE SIDED WALLS ARE 6" WALL FLATS, UNLESS NOTED OTHERWISE

FLOOR PLAN
 SCALE: 1/8" = 1'-0"

REVISION
 DECEMBER 02, 2022

DESCRIPTION	REV #	DATE
FURNITURE LAYOUT	0	DEC. 02, 22
BUILDING LOBBY ADDED	1	NOV. 16, 22
METAL DOOR	4	NOV. 17, 22
PONY WALL, STAIN GLASS WINDOW SIZE	3	NOV. 16, 22
PONY WALL ADDITION, DOOR, ADDED, MISC.	2	NOV. 10, 22
MODIFICATIONS	1	NOV. 02, 22

UNDER THE BRIDGE

SET NAME: INT. SAANICH POLICE DEPT. (MAIN FLOOR)	DATE: NOV. 03, 2022
DRAWING TITLE: FLOOR PLAN	CP # 101
LOCATION: 12031 FRASERWOOD WAY, RICHMOND	SET #
PRODUCTION DESIGNER: JENNIFER HORTON	ART DIRECTOR: BRAD KASSIARAKIS
DESIGNER: K. WHITE	SCRIPTER: AS NOTED
DIRECTOR: GIETA PATEL	

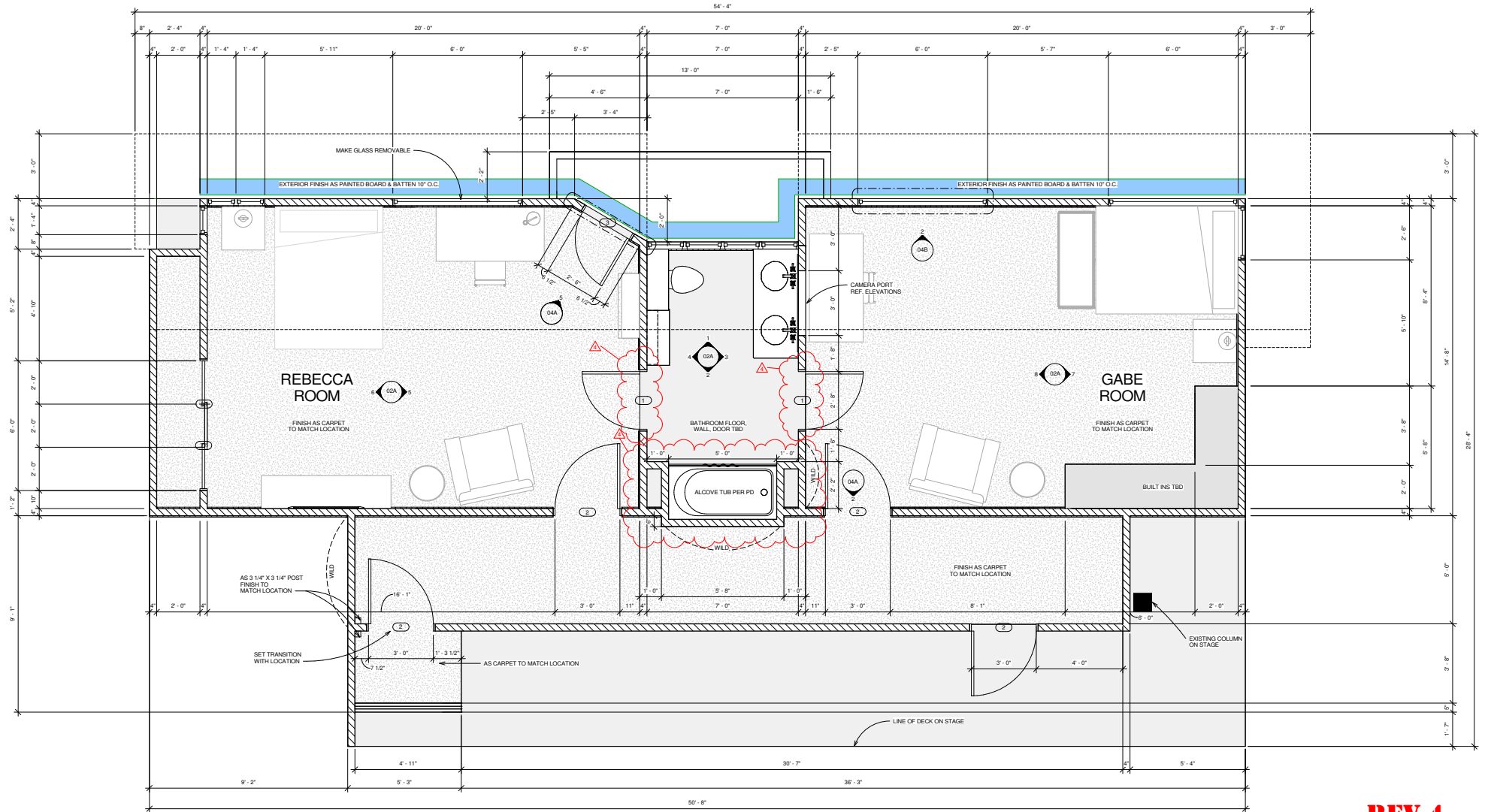
005 01A

Saanich Police Department_Set Photos



Godfrey House_Set Design by Kyle White

Studio build of the second floor of the house location



REV 4
NOV 16 2022

1 Int. Godfrey House Plan
1/2" = 1'-0"

N.B.: - ALL DIMENSIONS IN FEET - INCHES
- FINISHES TO MATCH LOCATION
- WALLS AS VERT. WOOD BOARDS

ATTENTION !
IF THE SQUARE IS NOT 1" X 1" THE DIMENSIONS NOT TO SCALE

DESCRIPTION	REV	DATE
Move Bath Tub, Change Bathroom Doors, Chg Fascia Cut	4	221115

SET NAME	DATE
Int. Godfrey House Second Floor	11/02/22

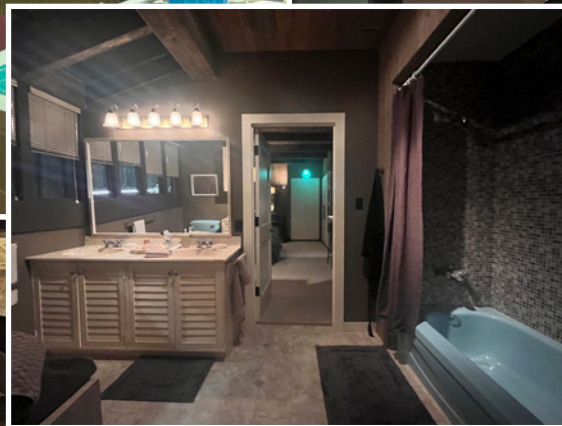
DRAWING TITLE	REV #	DRAWING #
Floor Plan	000	004 01A

PRODUCTION DESIGNER	ART DIRECTOR	SET DESIGNER	SCALE
JENNIFER MORTON	BRAD KARAGIOLAKIS	ADRIAN PATRICK	AS NOTED

LOCATION	SET #
1203 Fremont Way, Richmond BC	004



Godfrey House_Set Photos of Studio Build

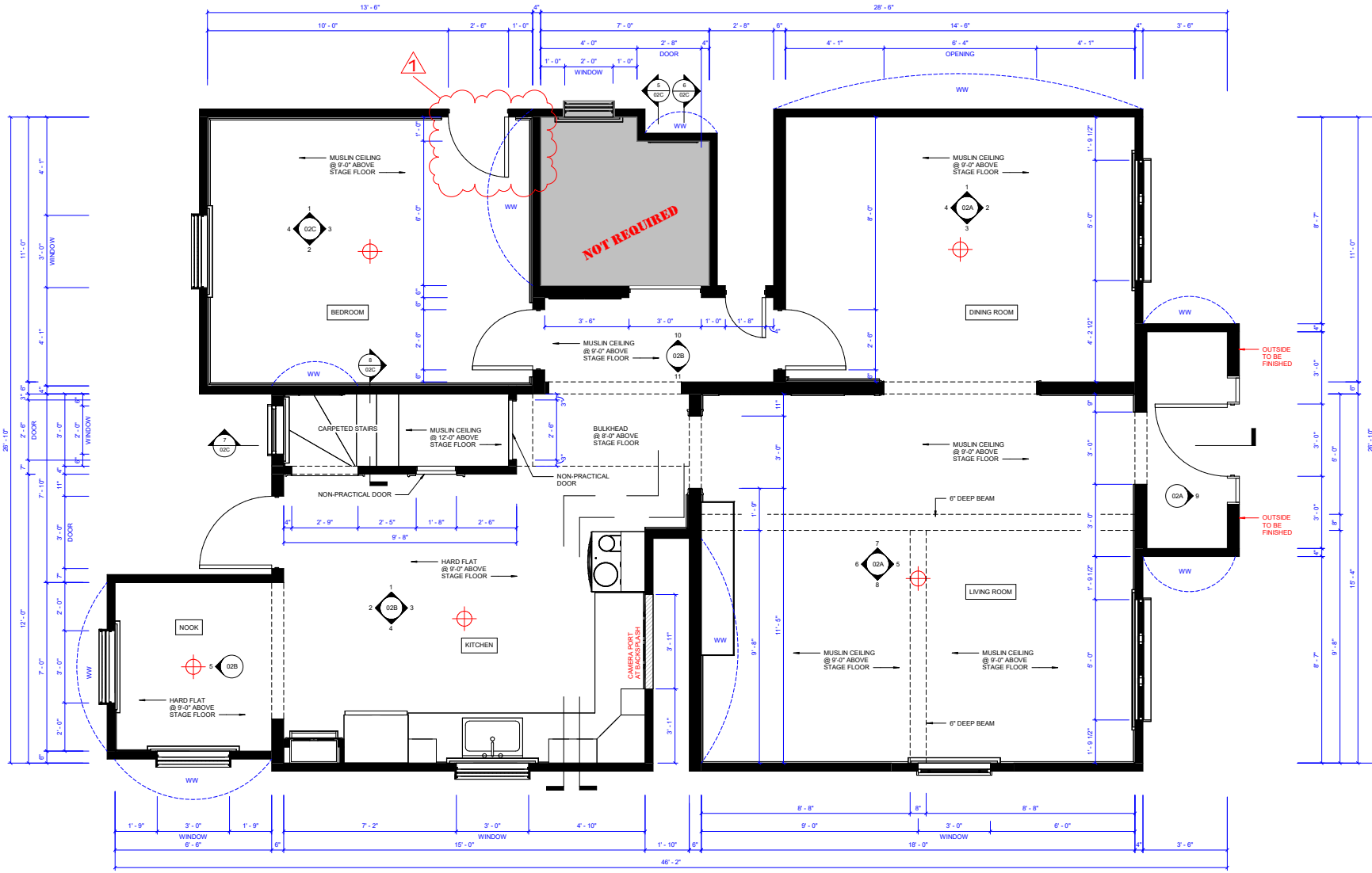


Godfrey House_Set Photos of Location Set



Connor's House_Set Design by Codey Falkenberg - STUDIO BUILD

Single storey home - full first floor




1 MAIN FLOOR
1/2" = 1'-0"

REVISION 3
JAN. 06, 2023

DESCRIPTION	REV	DATE
Door Added	1	JAN. 06

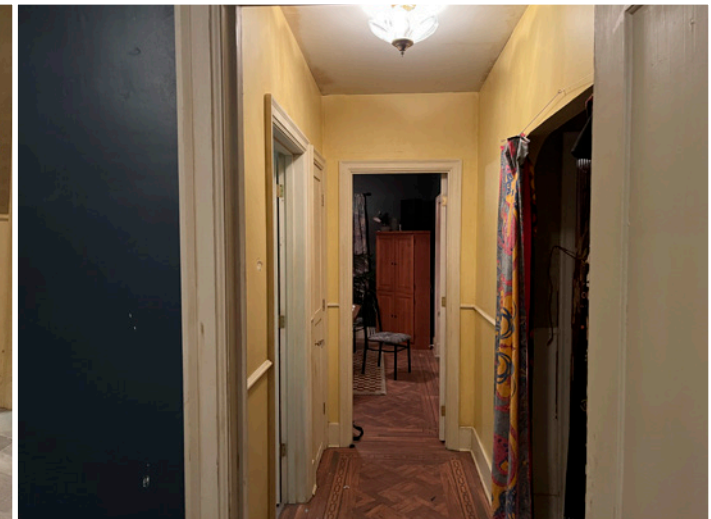
N.B.: - ALL DIMENSIONS IN FEET - INCHES
- GRAPHICS TO DO ALL FLOORING

ATTENTION!
IF THIS SQUARE IS NOT 12"x12" THE DWG IS NOT TO SCALE



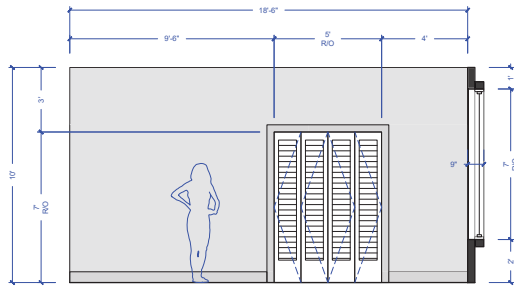
SET NAME	CONNOR FIELD'S HOUSE	DATE	13/08/22
DRAWING TITLE	MAIN FLOOR PLAN	SP #	102
LOCATION	2031 FRASERWOOD WAY, RICHMOND, BC	SET #	DRAWING #
DRAWN BY	C. FALKENBERG	DATE	202 01A

Connor's House_Set Photos

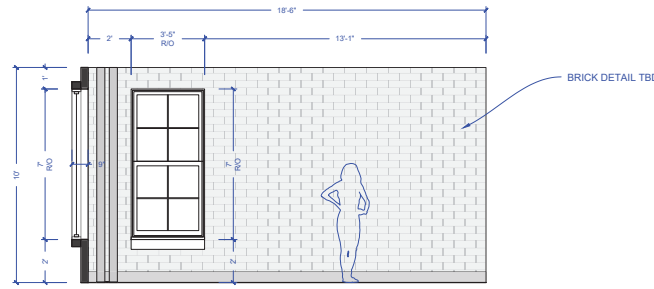


Rebecca's Apartment_Set Design by Daniel Kobyłka - STUDIO BUILD

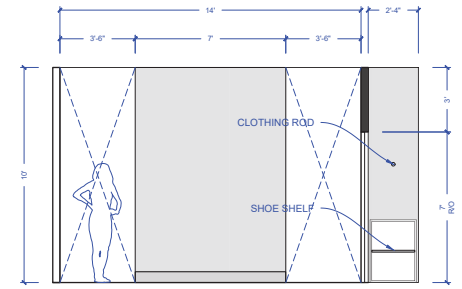
Small NYC Apartment



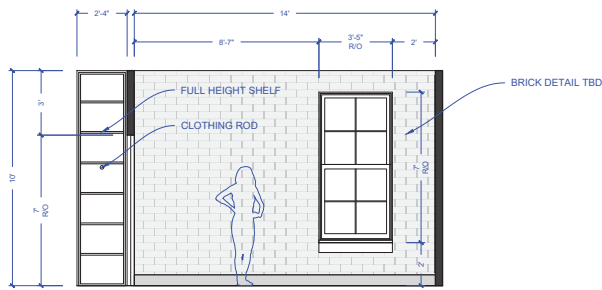
INT. APARTMENT - ELEV. A
SCALE 3/8" = 1'-0"



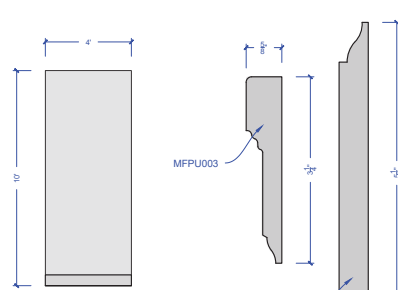
INT. APARTMENT - ELEV. B
SCALE 3/8" = 1'-0"



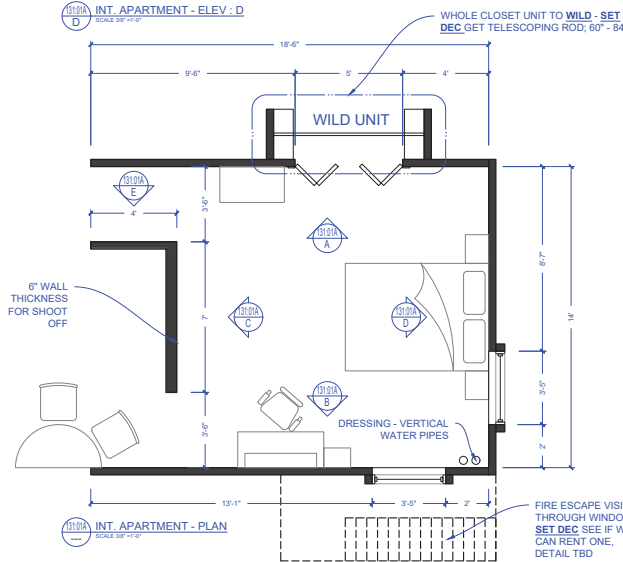
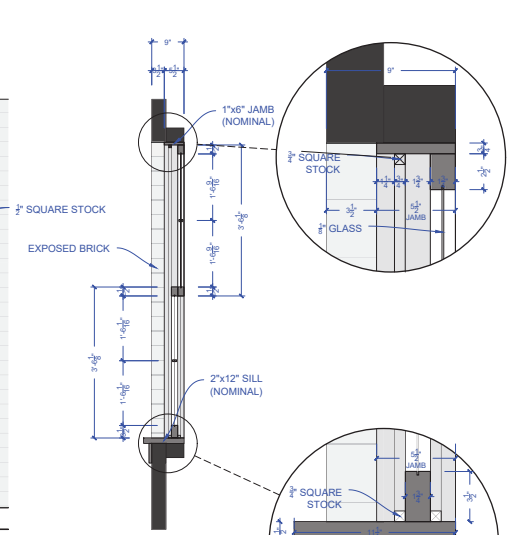
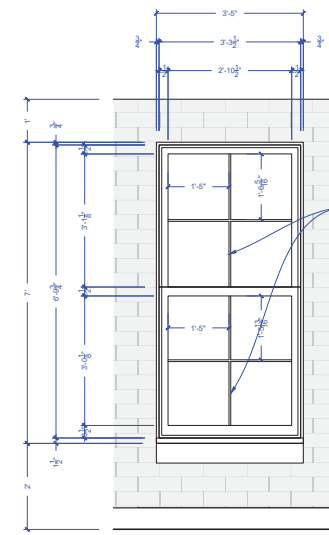
INT. APARTMENT - ELEV. C
SCALE 3/8" = 1'-0"



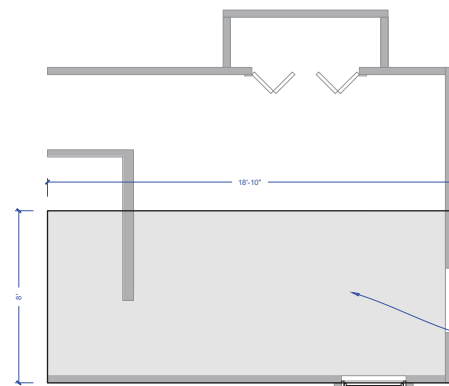
INT. APARTMENT - ELEV. D
SCALE 3/8" = 1'-0"



INT. APARTMENT - ELEV. E
SCALE 3/8" = 1'-0"

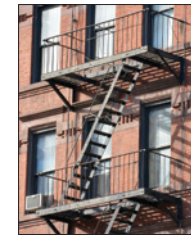


INT. APARTMENT - PLAN
SCALE 3/8" = 1'-0"



INT. APARTMENT - RCP
SCALE 3/8" = 1'-0"

NOTES:
FINISH NOTES - ALL BASEBOARD, CASING AND WINDOW FINISH - HIGH GLOSSY PAINT; FAT PAINT, OFF WHITE, CHIPPED + AGED



ISSUED
11/22/2022

DESCRIPTION	REV #	DATE

SETNAME INT. REBECCA'S APARTMENT	DATE NOV 21, 2022
DRAWING TITLE PLAN + ELEVATIONS	EP # 101
LOCATION STAGE 1 - 2291 FRASERWOOD WAY	SET # 131
PRODUCTION DESIGNER JENNIFER MORSON	ART DIRECTOR BRAD KARSGAARD
DESIGNER D. KOBYLKA	SCALE 3/8" = 1'-0"
DIRECTOR GEETA PATEL	DRAWING # 01A

Rebecca's Apartment_Set Photos

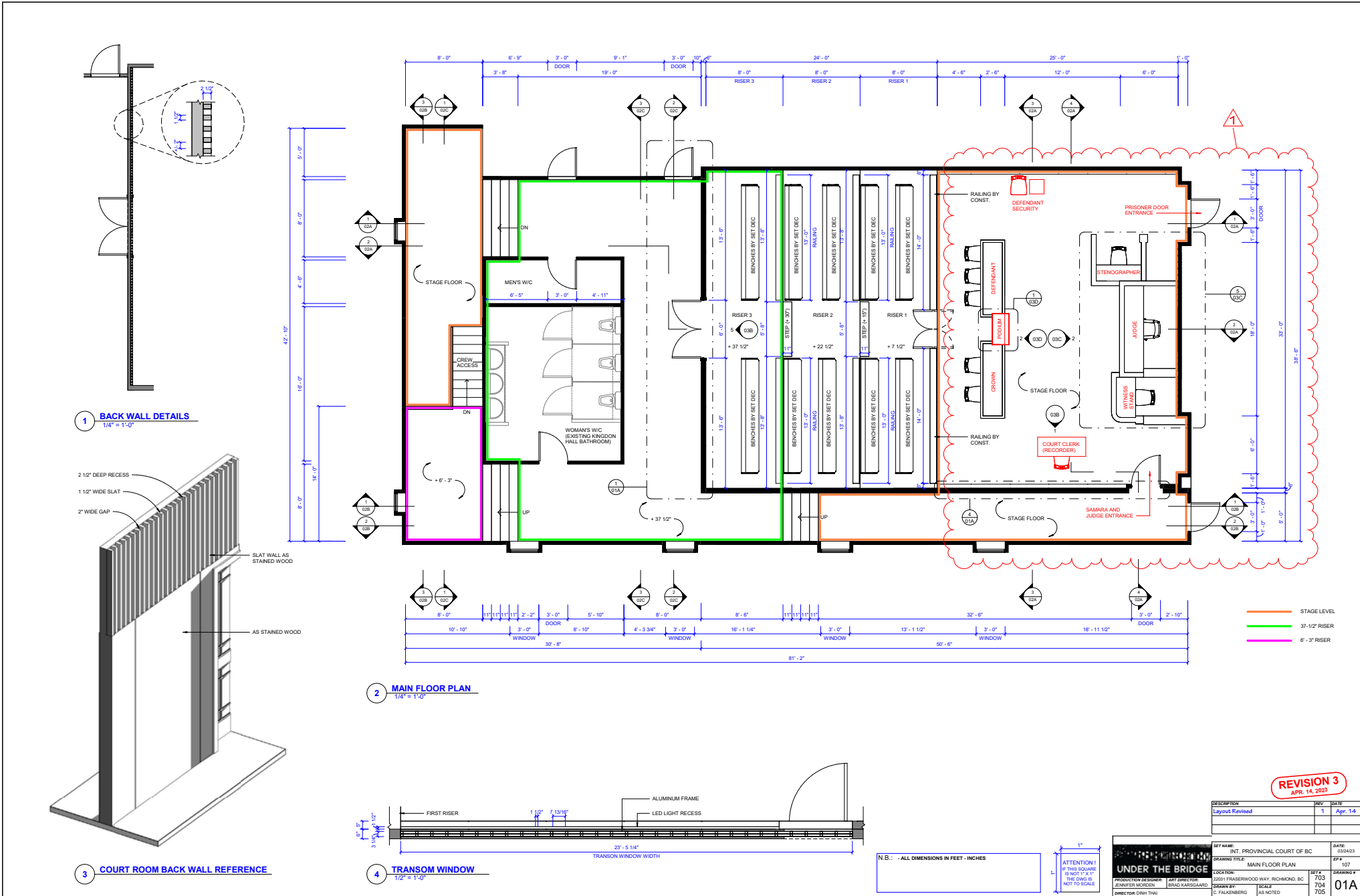


Craigflower Bridge_Set Photos - LOCATION



Victoria Law Courts_Set Design by Codey Falkenberg - STUDIO BUILD

x5 continually evolving Municipal --> Provincial Courts



Victoria Law Courts_Set Photos

