



SEAL

TEAM

STUART BLATT ... PRODUCTION DESIGNER

CAMERON BIRNIE ... ART DIRECTOR

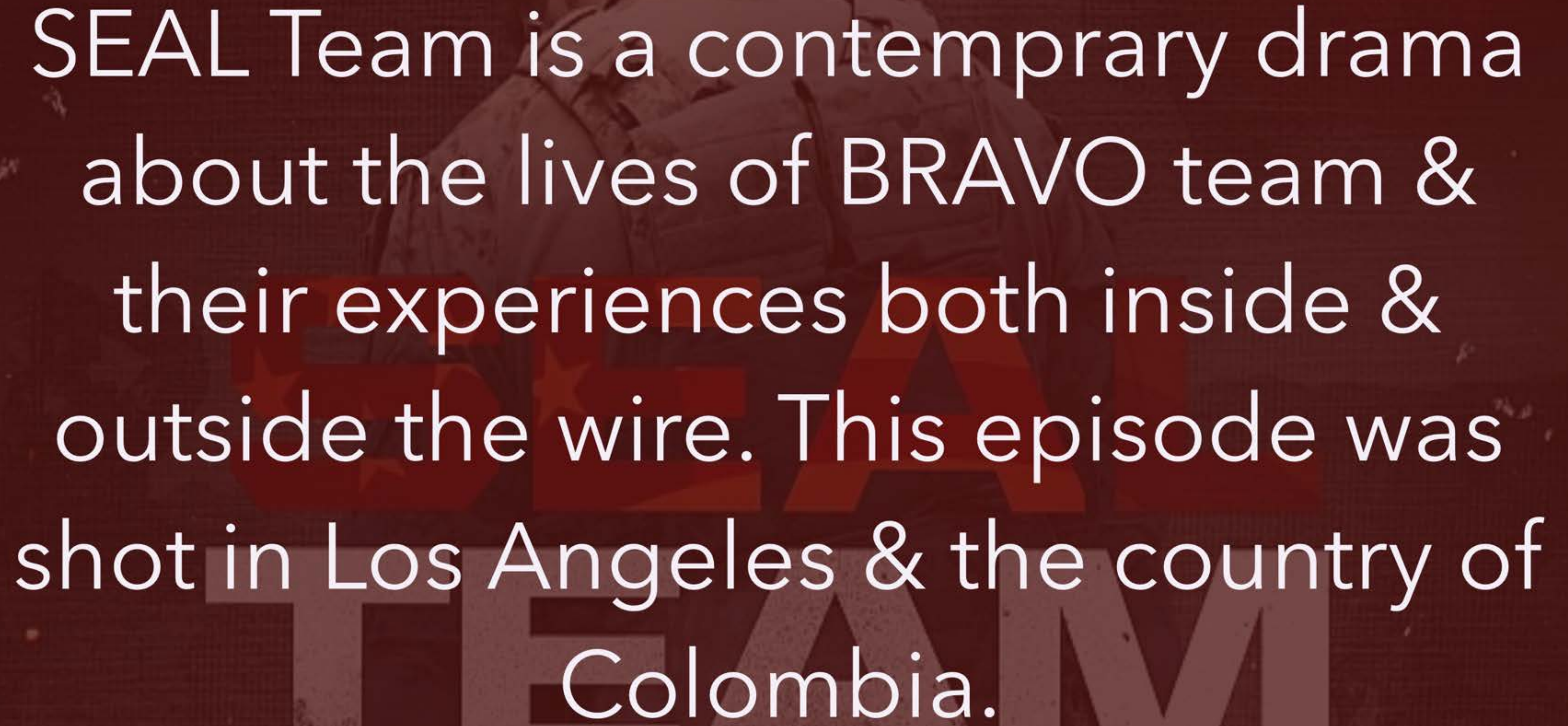
LEE WILSON-SILAS ... ASSISTANT ART DIRECTOR

SHELLEY WALLACE ... SET DESIGNER

JESSICA QUATTRINI ... GRAPHIC DESIGNER

SANDY STRUTH ... SET DECORATOR

SEAL
TEAM



SEAL Team is a contemporary drama about the lives of BRAVO team & their experiences both inside & outside the wire. This episode was shot in Los Angeles & the country of Colombia.

JUNGLE MILITARY CAMP

BUILT ON LOCATION
PALOMINO, COLOMBIA















JUNGLE MILITARY CAMP

CONCEPT RENDERING

BUILT ON LOCATION
PALOMINO, COLOMBIA





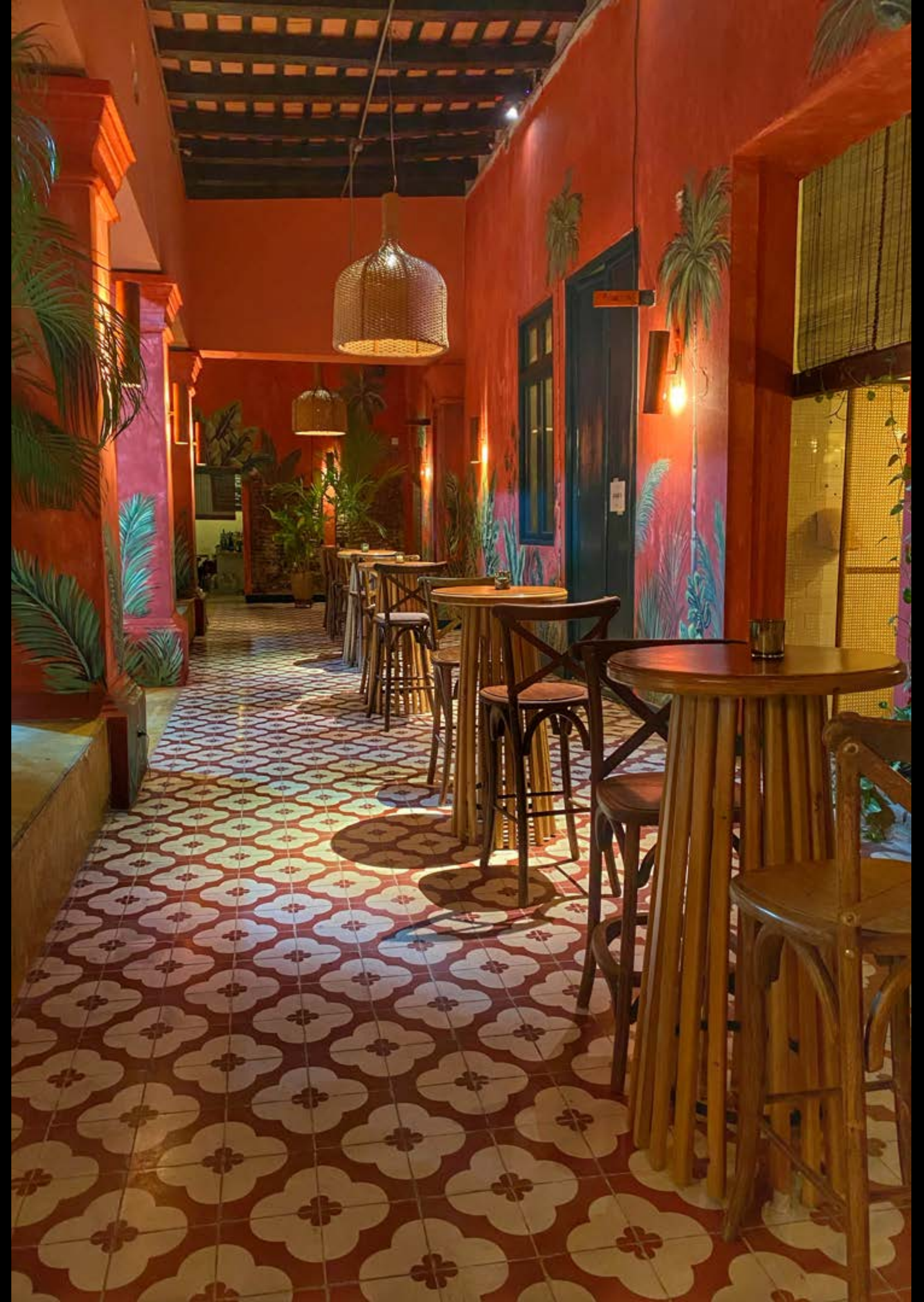




SALSA CLUB

BUILT ON LOCATION
SANTA MARTA, COLOMBIA















SALSA CLUB

CONCEPT RENDERING

BUILT ON LOCATION
SANTA MARTA , COLOMBIA











HONDURAN SAFE HOUSE

BUILT ON STAGE IN LOS ANGELES
TO MATCH EXTERIOR SHOT IN
COLOMBIA







El Rojo





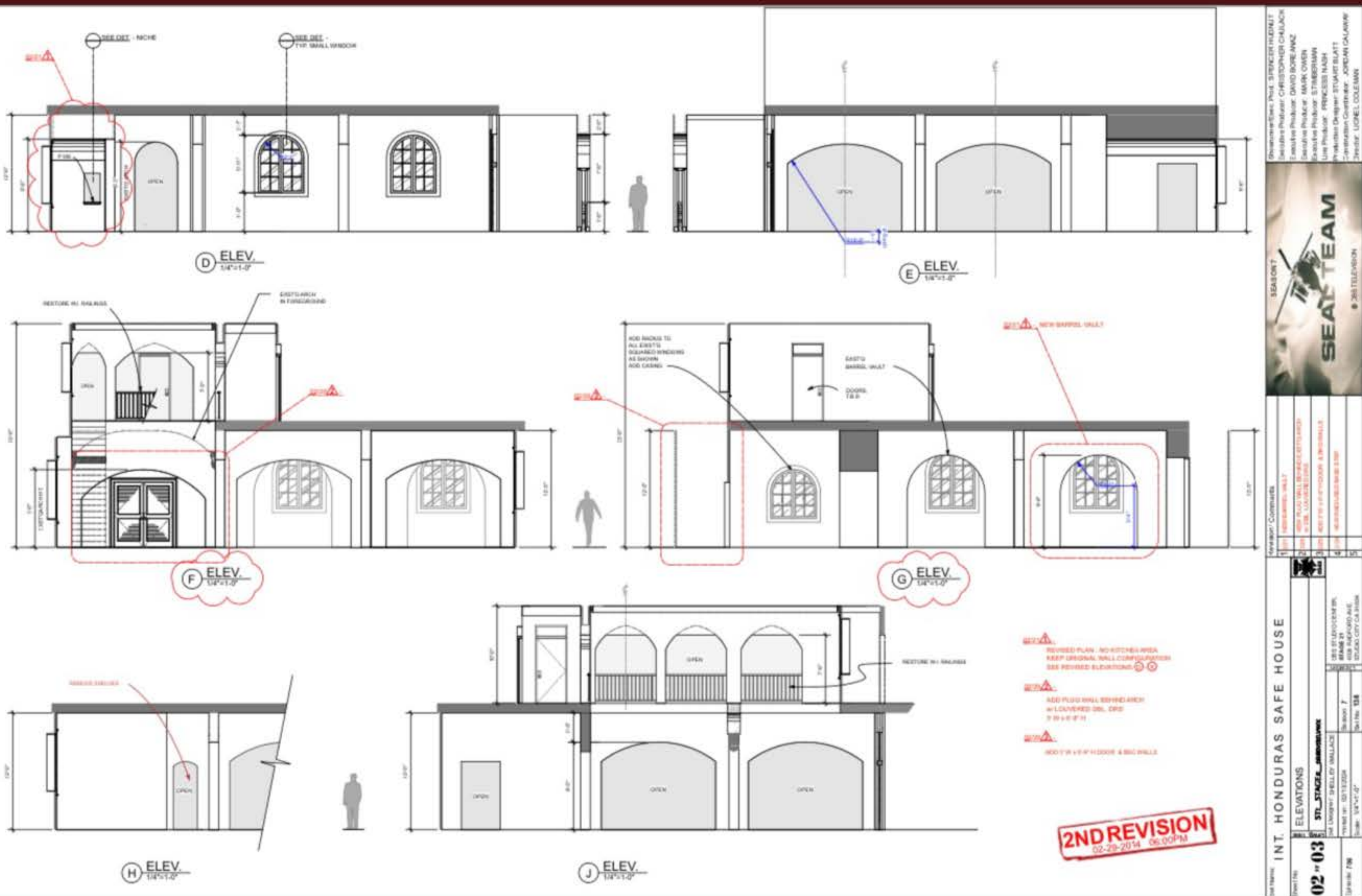




HONDURAN SAFE HOUSE

STAGE PLANS

BUILT ON STAGE IN LOS ANGELES
TO MATCH EXTERIOR SHOT IN
COLOMBIA



SEAL TEAM
SEASON 7
8.26 TELEVISION

INT. HONDURAS SAFE HOUSE

ELEVATIONS

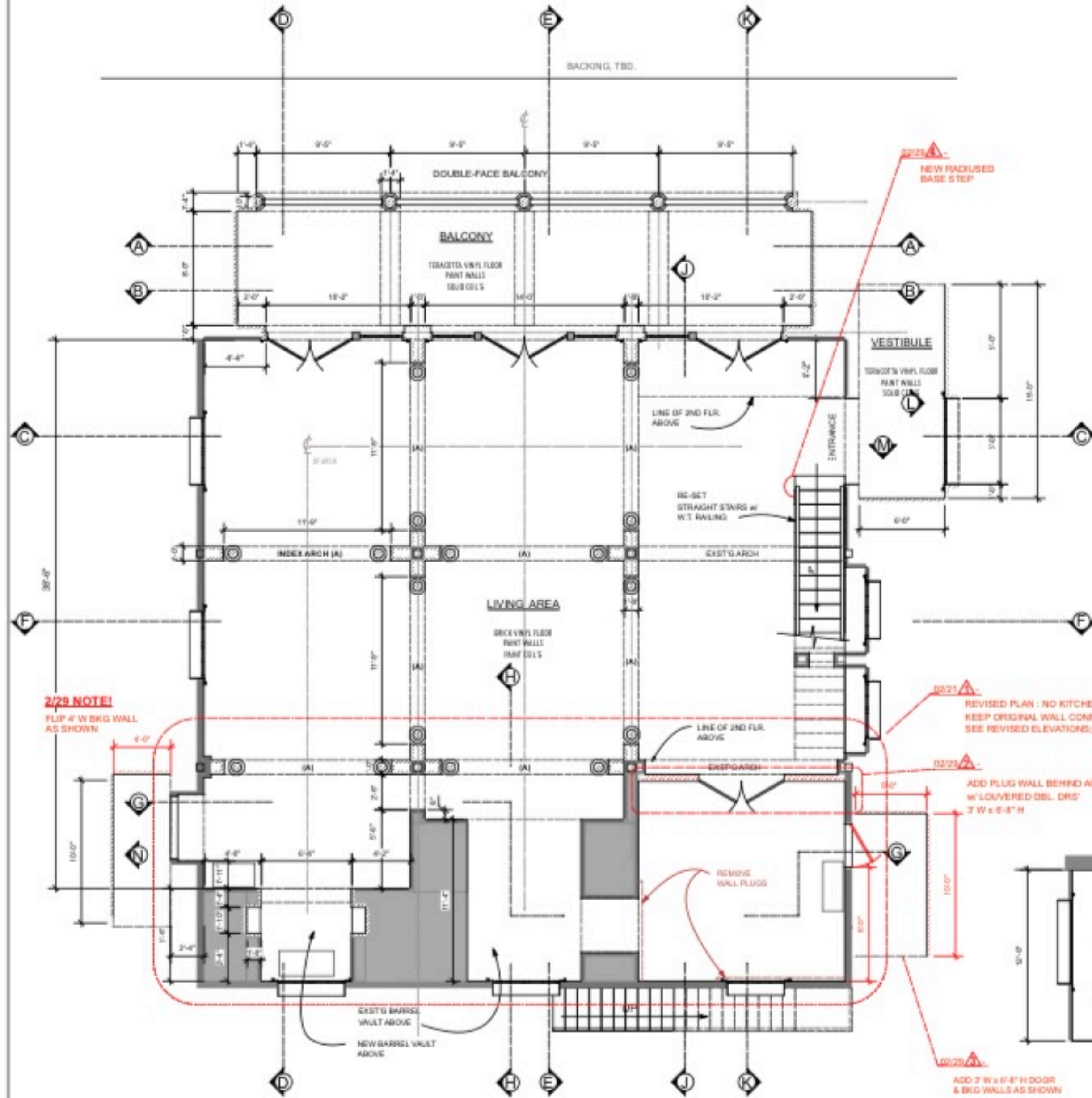
02-03
STL STAGES ARCHITECTURE

104 LAMBERT STREET, SUITE 100
LOS ANGELES, CA 90045
TEL: 310.441.1111
WWW.STLSTAGES.COM

DESIGNED BY: JAMES HARRIS
DATE: 02-13-2014
SCALE: 1/8" = 1'-0"

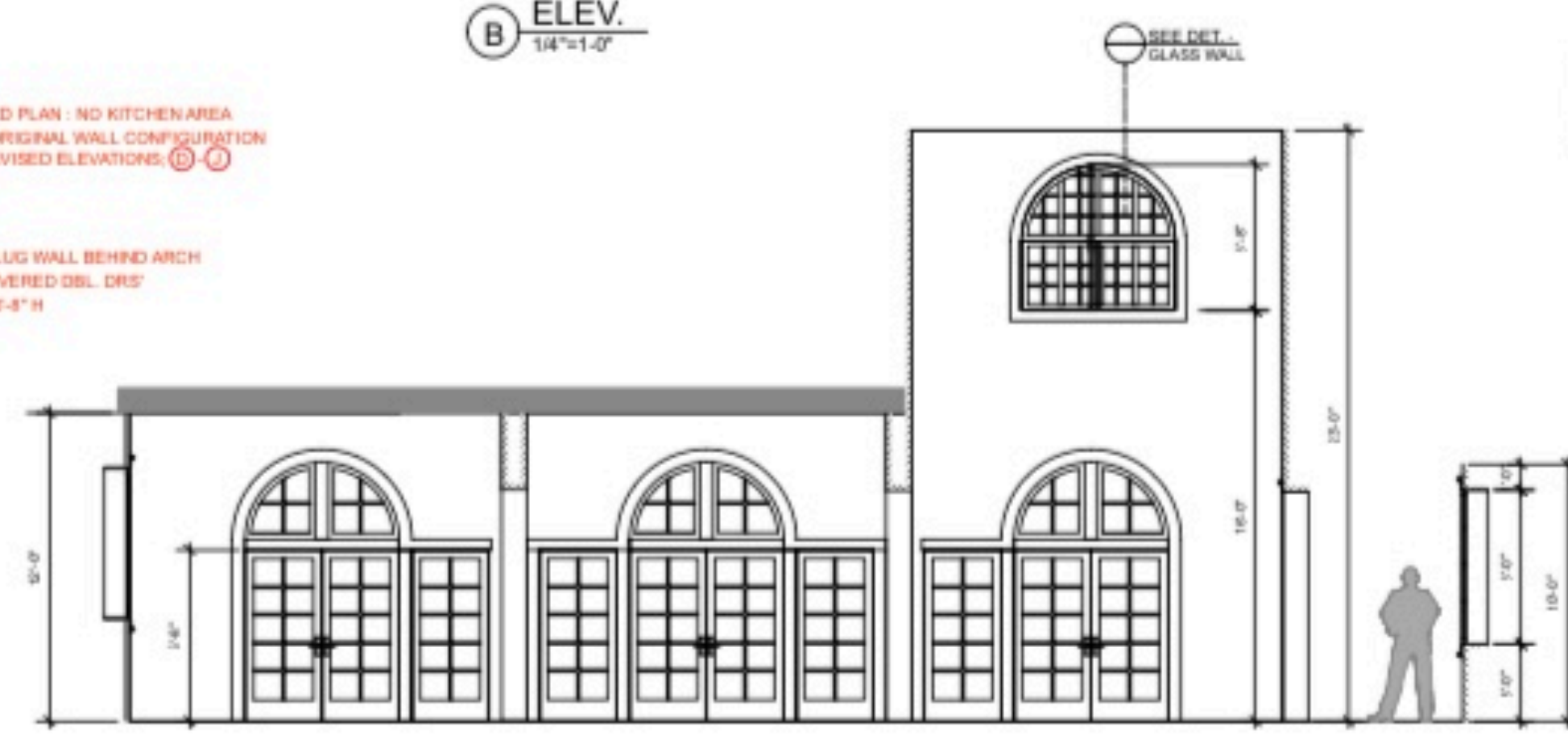
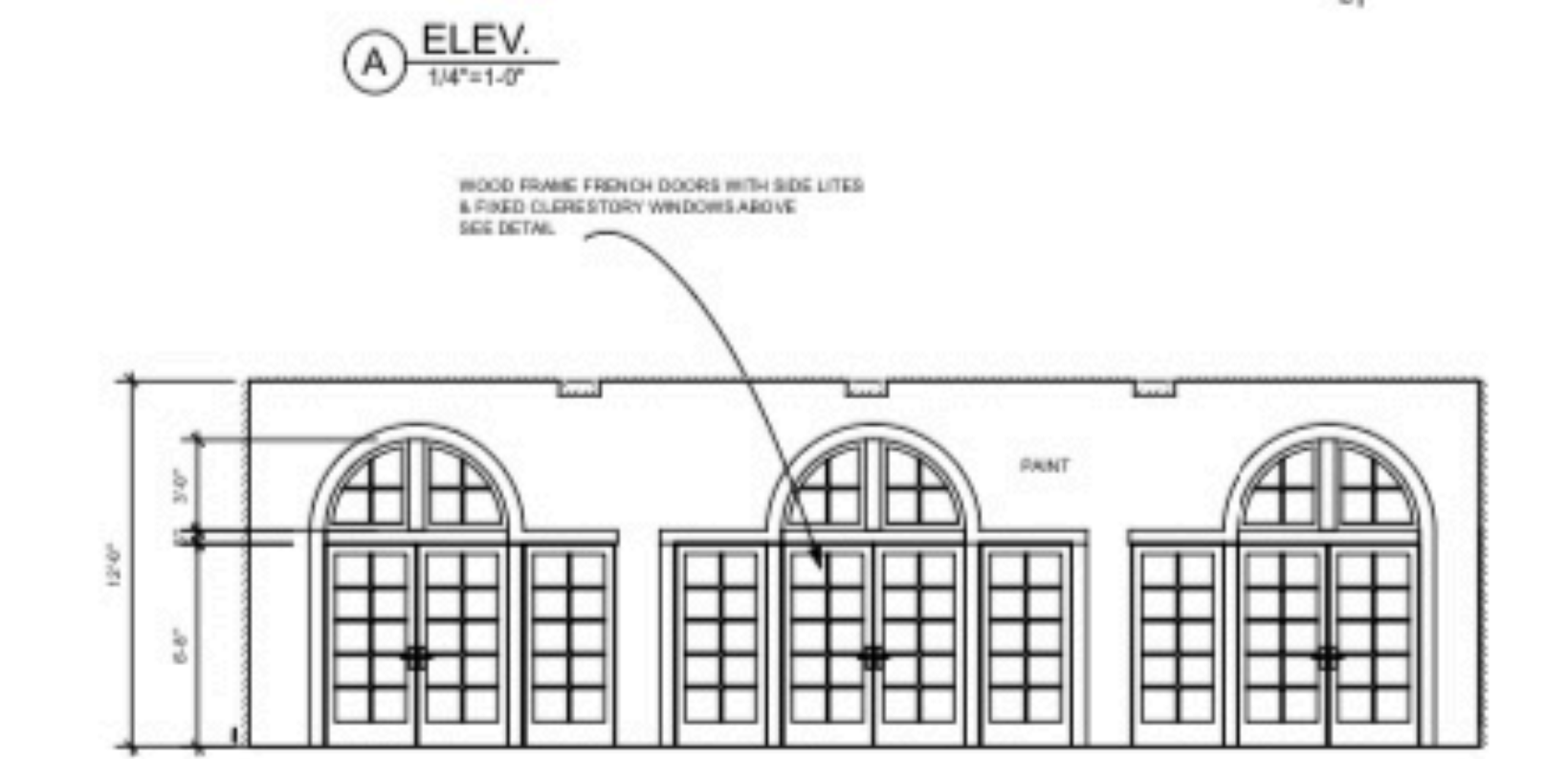
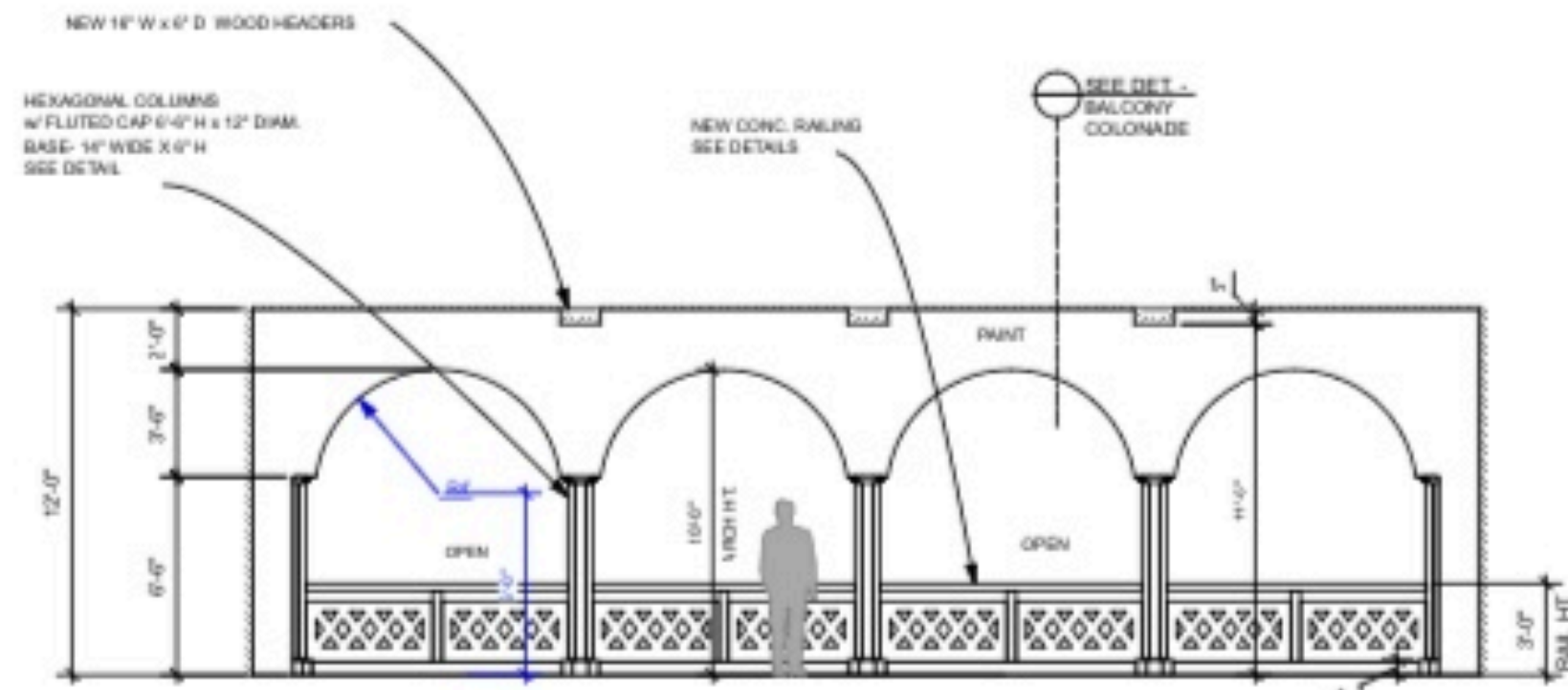
PROJECT: INT. HONDURAS SAFE HOUSE
LOCATION: LOS ANGELES, CA

DATE: 02-29-2014
TIME: 09:00PM



PLAN - INT. HONDURAS SAFE HOUSE

EP. 707 LOC. STAGE 21 1/4"=1'-0"



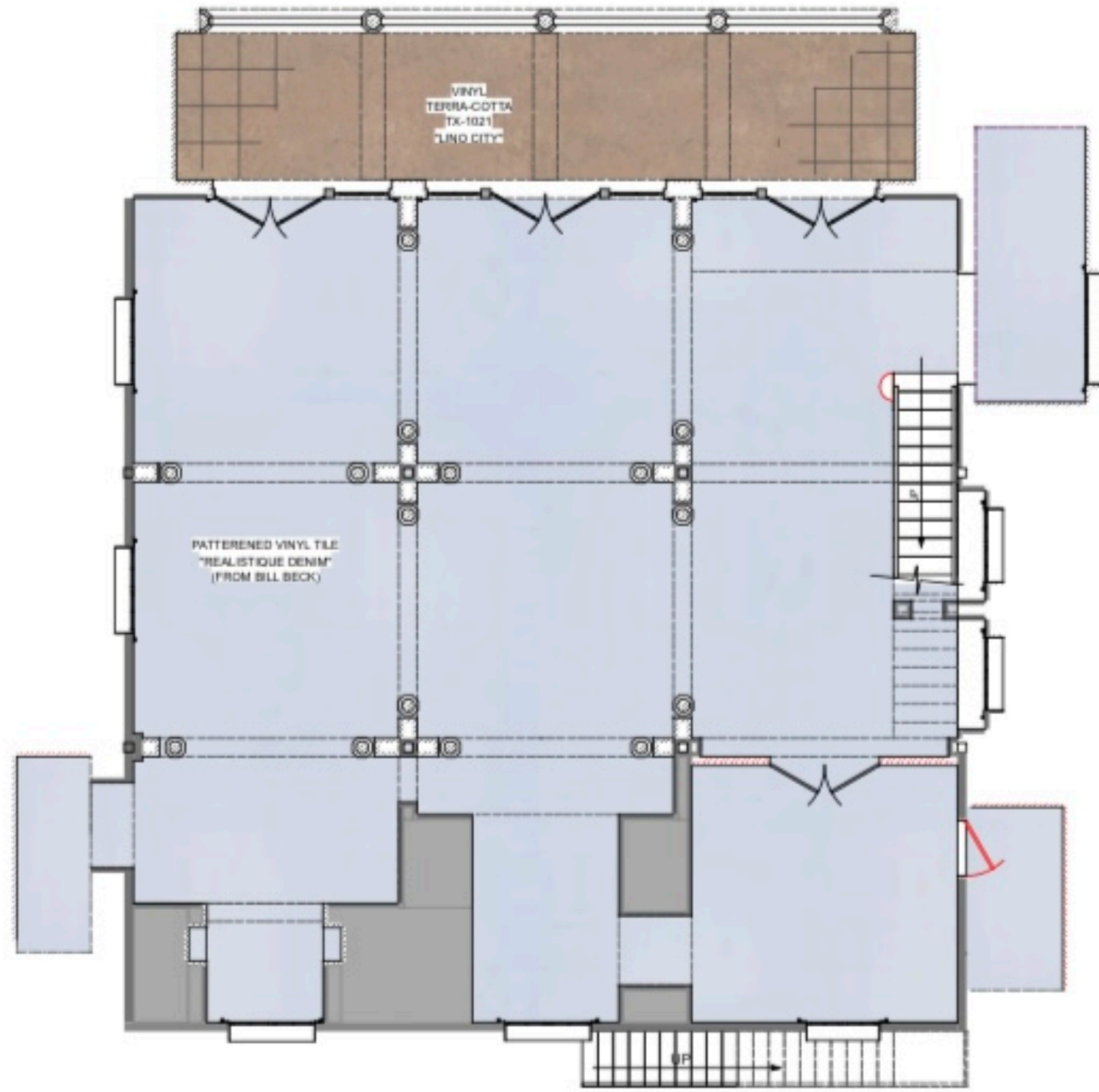
2ND REVISION
02-29-2014 06:00PM

Shower/Bat. Prod. SPENCER HUDNALL
 Executive Producer: CHRISTOPHER CHUJAC
 Executive Producer: DAVID BORE ANZ
 Executive Producer: MARK OWEN
 Executive Producer: STIMMERMAN
 Line Producer: PRINCESS NASH
 Production Designer: STUART BLATT
 Construction Coordinator: JORDAN CAHARR
 Director: LIONEL COLEMAN



Revision	Comments
1	0220 RE-SET PLAN: NO KITCHEN AREA
2	0220 ADD LOUVERED DBL DOOR PLUG WALL
3	0220 ADD 3' W x 6' 8\"/>
4	0220 NEW RADIUS BASE STEP
5	

INT. HONDURAS SAFE HOUSE	
PLAN / ELEVATIONS	
Sheet No. 01 of 03	STL_STAGE_21_DRAWINGS
Scale: 1/4"=1'-0"	Scale: 1/4"=1'-0"
Drawn by: WALLACE	Checked by: WALLACE
Drawn on: 02/17/2014	Drawn on: 02/17/2014
Scale: 1/4"=1'-0"	Scale: 1/4"=1'-0"
Sheet No. 707	Sheet No. 138
Project No. 707	Project No. 138
Location: STAGE 21	Location: STAGE 21
City: RANFORD AVE	City: RANFORD AVE
State: CA 91004	State: CA 91004



FIRST FLOOR



PATTERNED VINYL TILE
"REALISTIQUE DENIM"



VINYL TERRA-COTTA
TX-1021 LINO CITY



SECOND FLOOR

FLOORING LAYOUT - INT. HONDURAS SAFE HOUSE

EP: 707 LOC: STAGE 21 1/4"=1'-0"

PRELIMINARY
03-01-2024 12:20PM

Showroom/Exec. Prod.: SPENCER HUDDNUT
Executive Producer: CHRISTOPHER CHULACK
Executive Producer: DAVID BOREANAZ
Executive Producer: MARK OWEN
Executive Producer: STIMBERMAN
Line Producer: PRINCESS NASH
Production Designer: STUART BLATT
Construction Coordinator: JORDAN CALAWAY
Director: LONEL COLEMAN



Revision	Comments
1	
2	
3	
4	
5	

INT. HONDURAS SAFE HOUSE

FLOORING LAYOUT

STL_STAGE_21HONDURAS

01 of 01

303 STUDIO CENTER DR.
STAGE 21
4000 RAYBURN AVE.
STUDIO CITY CA 91004

01/01/2024

Scale: 1/4"=1'-0"

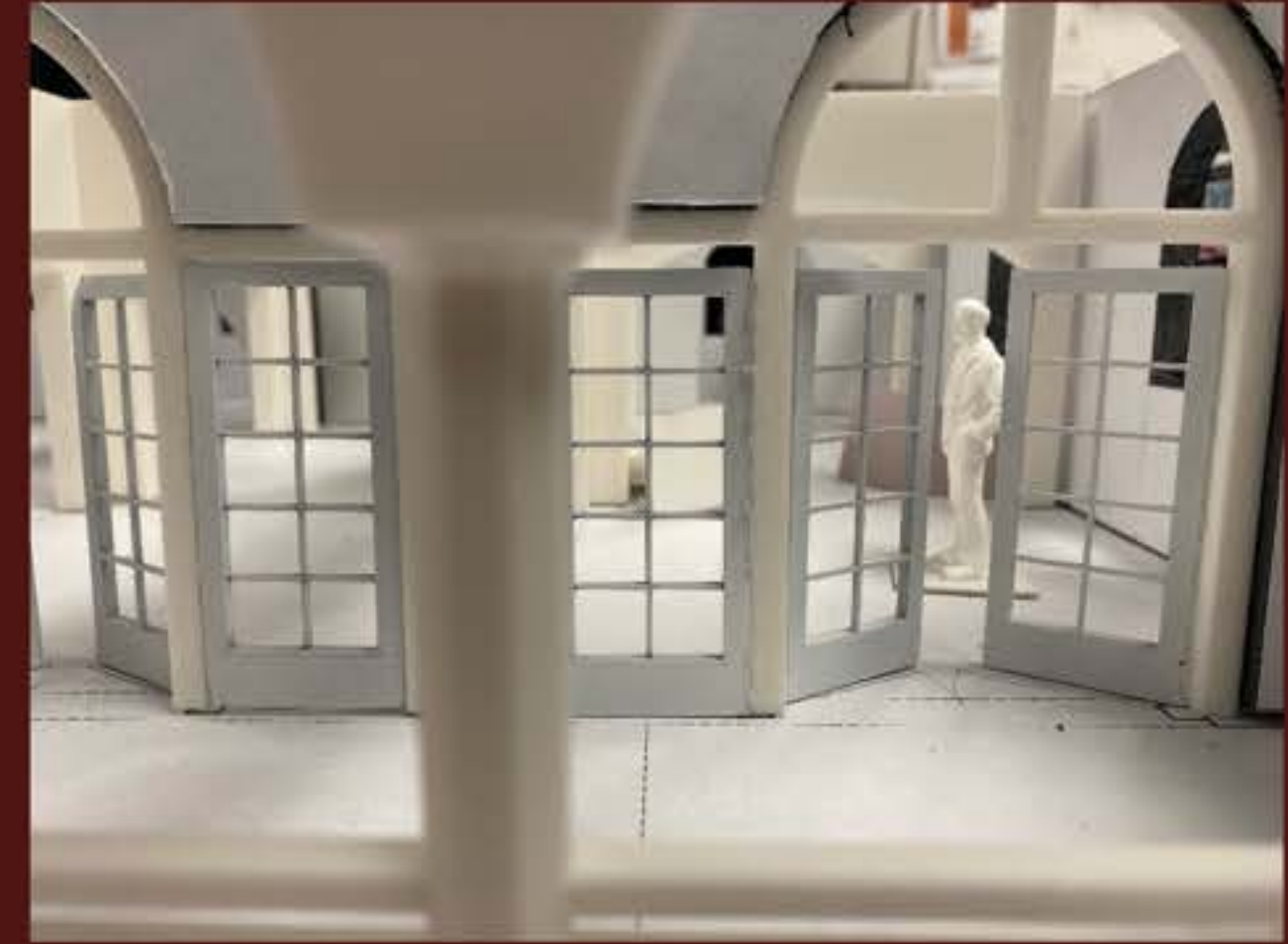
Sheet No: 707

Season: 7

Set No: 138

HONDURAN SAFE HOUSE MODEL

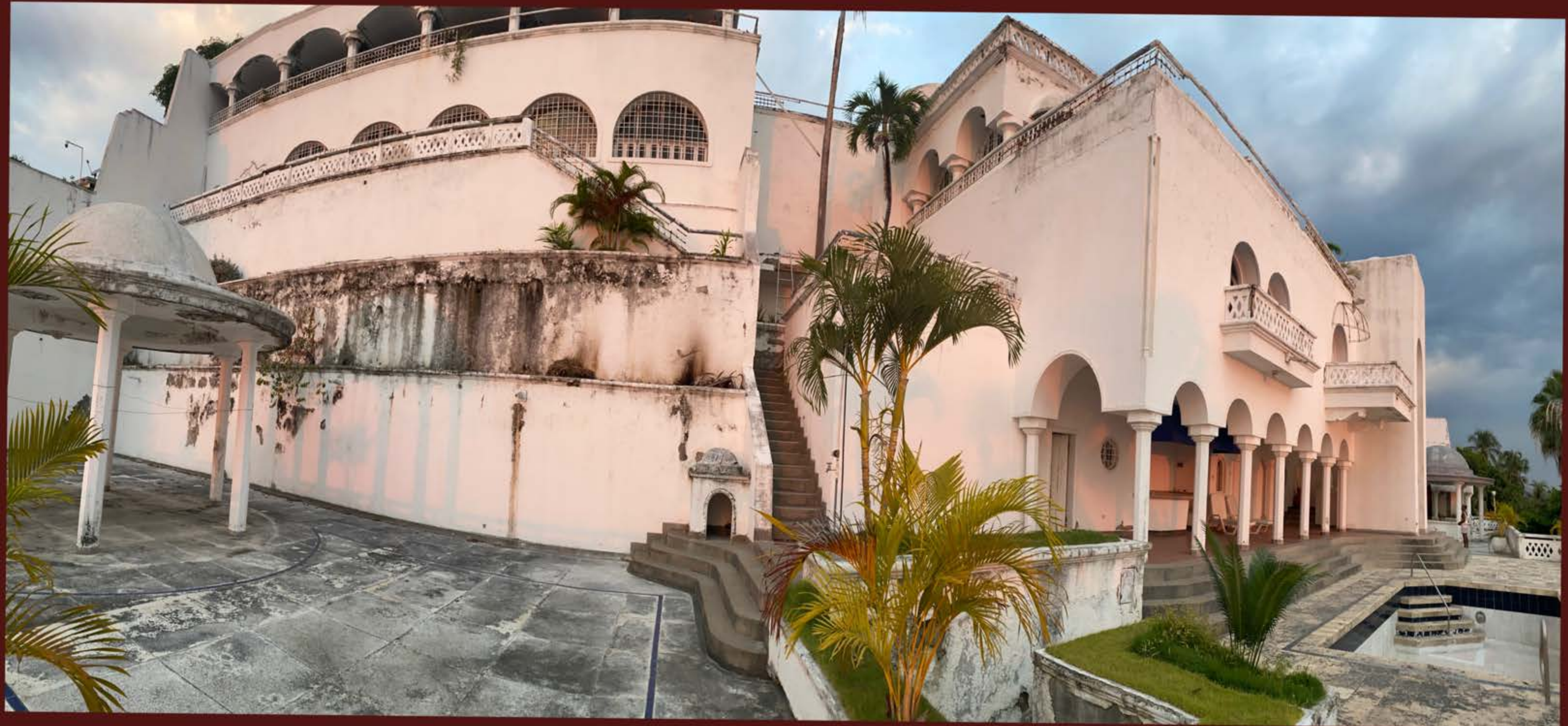
BUILT ON STAGE IN LOS ANGELES
TO MATCH EXTERIOR SHOT IN
COLOMBIA





HONDURAN SAFE HOUSE

EXTERIOR LOCATION
COLOMBIA













STUART BLATT ... PRODUCTION DESIGNER

CAMERON BIRNIE ... ART DIRECTOR

LEE WILSON-SILAS ... ASSISTANT ART DIRECTOR

SHELLEY WALLACE ... SET DESIGNER

JESSICA QUATTRINI ... GRAPHIC DESIGNER

SANDY STRUTH ... SET DECORATOR

SEAL **TEAM**