

ADG Awards 2024  
1 Hour Limited Series

A movie poster for the series "Manhunt". The scene is set in a dark, wooded area with a misty or foggy atmosphere. In the center, a man in a dark coat and hat stands with his back to the camera, looking out over a clearing. To his right, another man in a dark coat and hat is kneeling on the ground, tending to someone. In the foreground, several bodies are lying motionless on the ground. The title "MANHUNT" is overlaid in large, white, serif capital letters across the middle of the image.

# MANHUNT

Production Designer: Chloe Arbiture

Set Decorator: Lisa Alkofer

Filmed in Savannah, GA



CONCEPT

ANDRES PARADA

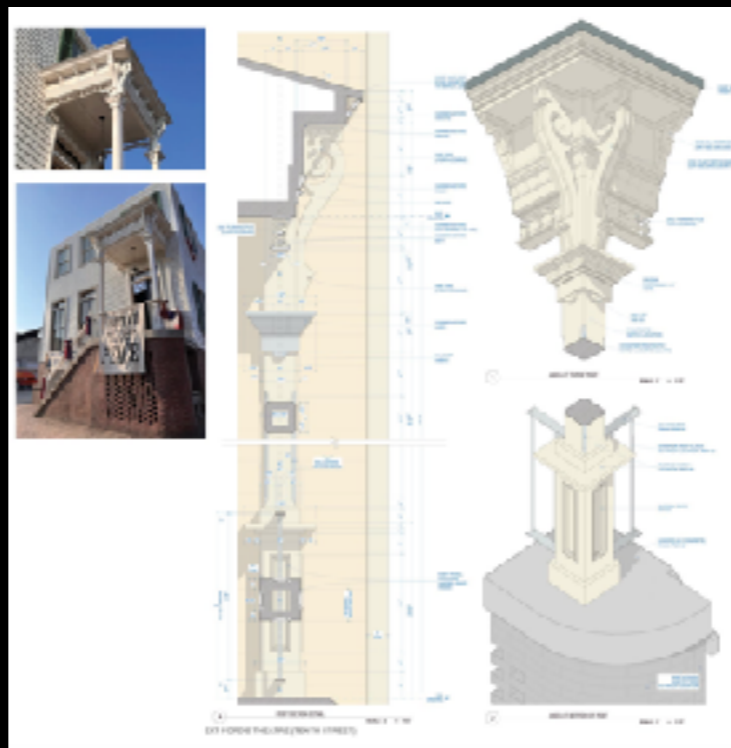
EXT. 10TH STREET (OUTSIDE FORD'S THEATER) - WASHINGTON D.C.



EXT. 10TH STREET (OUTSIDE FORD'S THEATER) -WASHINGTON D.C.



EXT. FORD'S THEATER & STAR SALOON



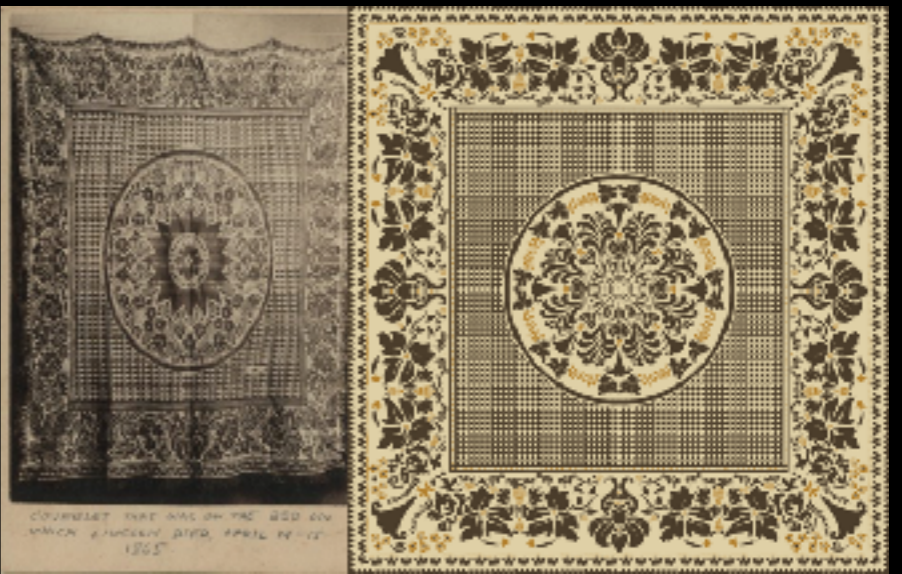
EXT. 10TH STREET- WASHINGTON D.C



EXT 10TH STREET OUTSIDE OF PETERSEN'S BOARDING HOUSE



EXT 10TH STREET OUTSIDE OF PETERSEN'S BOARDING HOUSE



RECREATED WALLPAPER AND BLANKET FROM HISTORICAL PHOTOS

QUILT FROM LINCOLN'S DEATHBED

INT. PETERSEN'S BOARDING HOUSE





CONCEPT

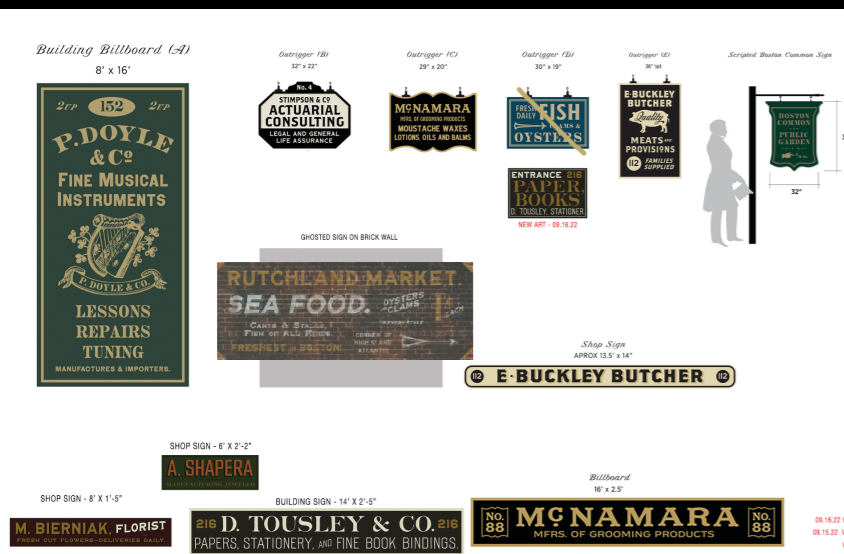
EXT. NY CITY STREET OUTSIDE THEATER



EXT. NY STREET



EXT. STREETS OF BOSTON



EXT. STREETS OF BOSTON



Concept



INT. FORD'S THEATER



EXT. GARRETT TOBACCO BARN



INT. GARRETT TOBACCO BARN



INT. GARRETT TOBACCO BARN





INT. DR. SAMUEL MUDD'S HOME



EXT. FREED PEOPLE'S CAMP



LINCOLN FUNERAL TRAIN



LINCOLN FUNERAL TRAIN



INT. MILITARY TRIBUNAL COURT



INT. WAR DEPARTMENT- STRATEGY ROOM

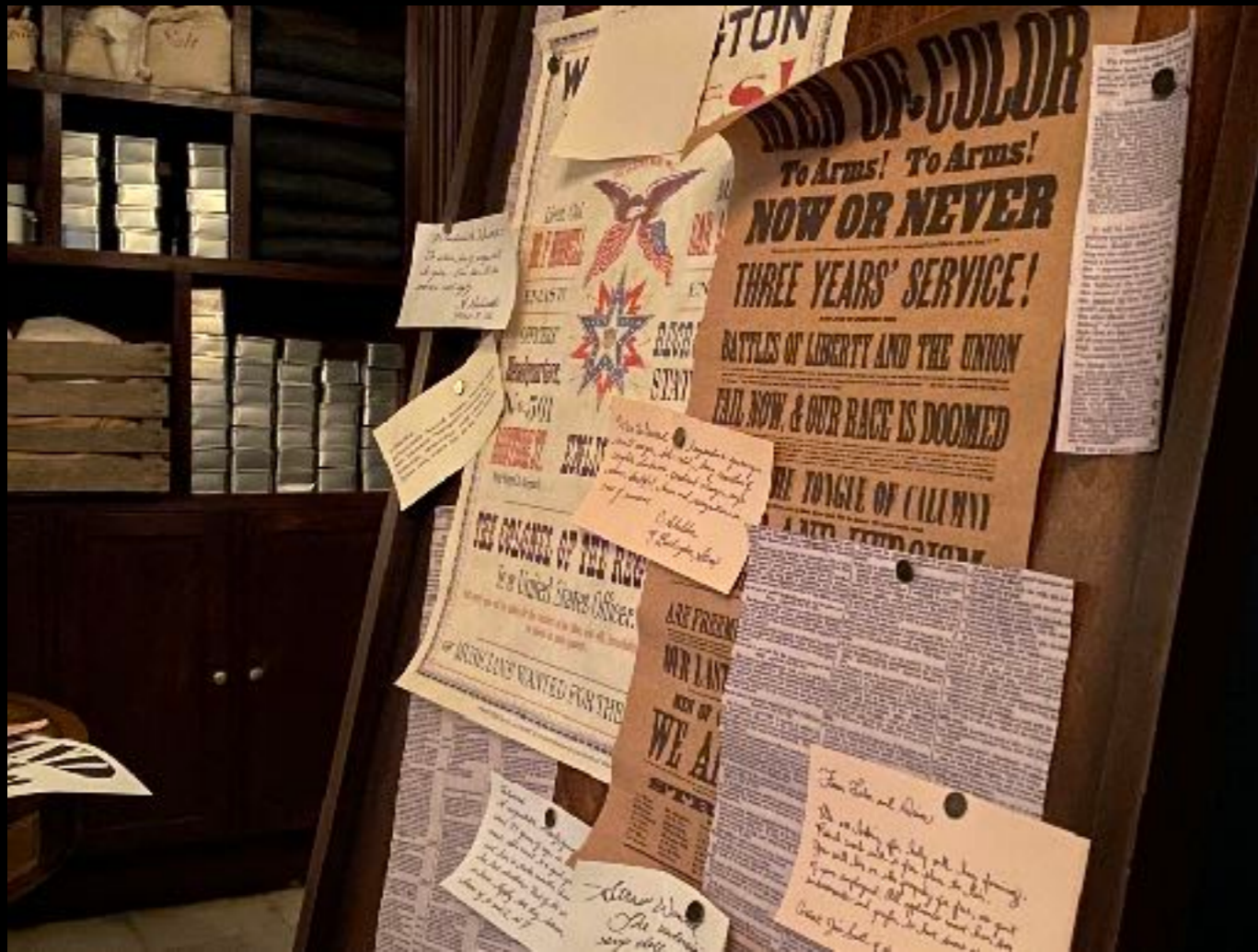


INT. WAR DEPARTMENT-STRATEGY ROOM



INT. WAR DEPARTMENT- FOYER/ANTEROOM





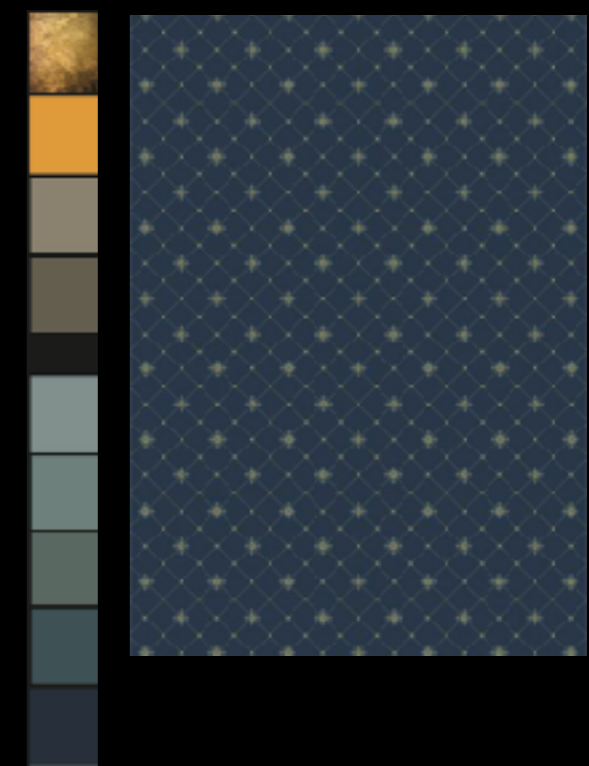
INT. WAR DEPARTMENT- FOYER/ANTEROOM



INT. WAR DEPARTMENT- STANTON'S OFFICE



INT. WAR DEPARTMENT- TELEGRAPH ROOM



INT. WAR DEPARTMENT- TELEGRAPH ROOM



INT. WAR DEPARTMENT- TELEGRAPH ROOM



INT. KIRKWOOD HOTEL



INT. STANTON'S BEDROOM



INT. SEWARDS DINING ROOM



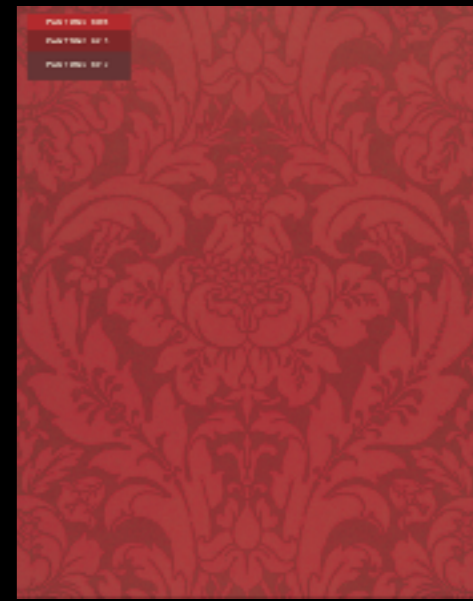


INT. WHITE HOUSE

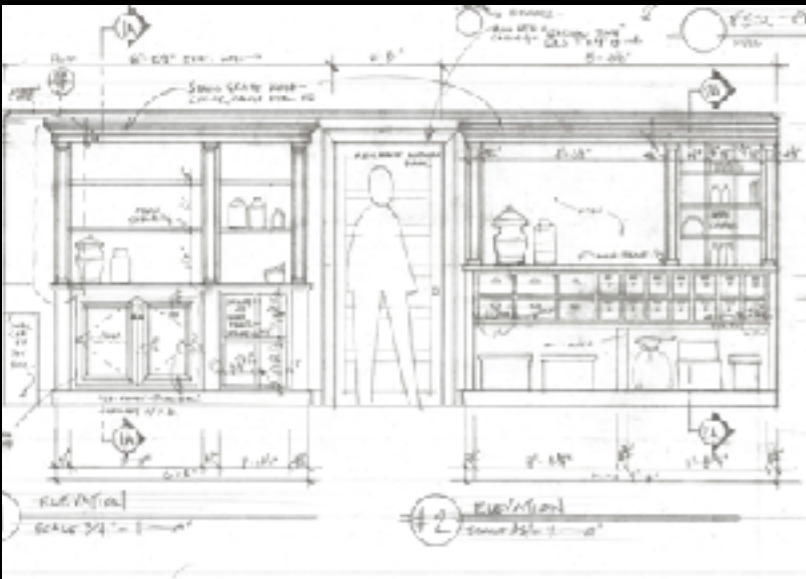


CONCEPT

INT. NY GOLD EXCHANGE



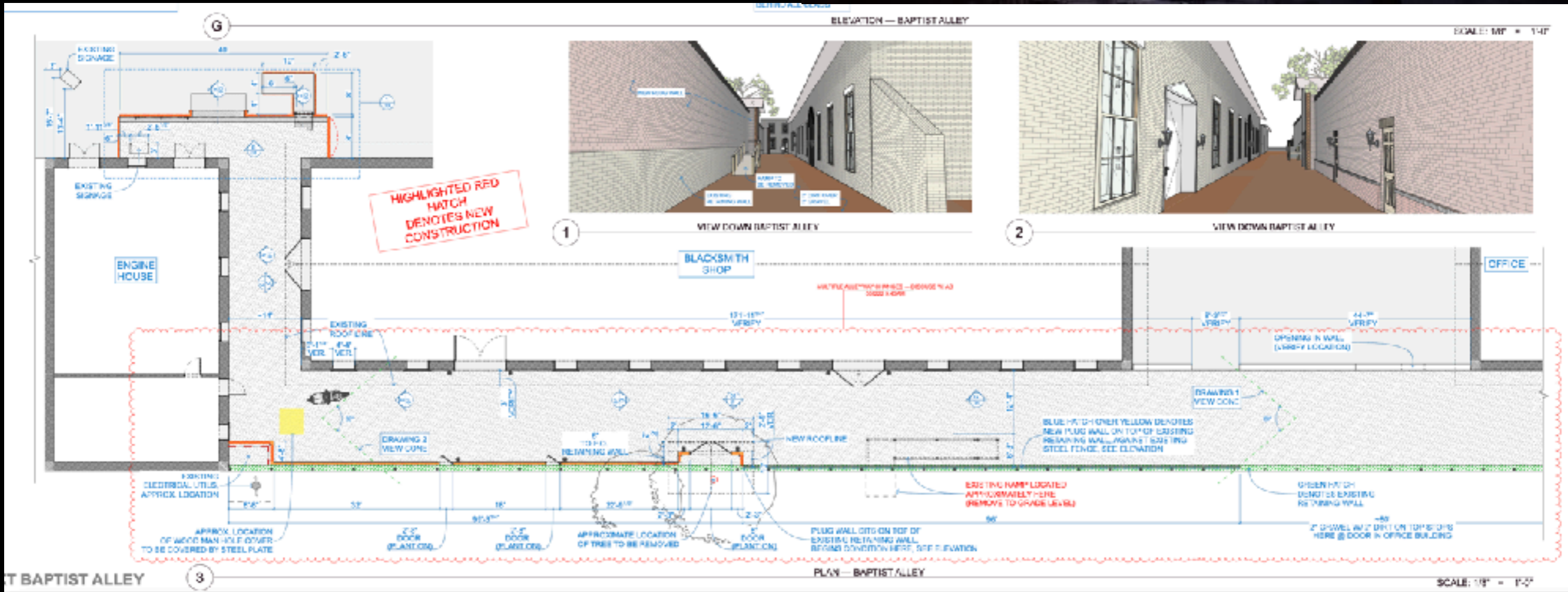
INT. NATIONAL HOTEL - BOOTH'S ROOM



INT. PHARMACY



INT. STAR HOTEL LOBBY



EXT. BAPTIST ALLEY (BEHIND FORD THEATER)



INT. MONTREAL MONASTERY



INT. NY POLICE DEPARTMENT BULLPEN



BALTO & OHIO R.R.  
**WASHINGTON**  
 PASSENGER STATION  
 TO BALTIMORE & NORTHERN CITIES  
 ELEVATION 410 FEET.



**Toys, Toys, Toys!**  
 AT WHOLESALE AND RETAIL.  
 The Temple of Enchantment.  
**J. F. LOTTS,**  
 97 MANUVER STREET,  
**TOYS**  
 AND  
**FANCY GOODS!**  
 New Goods Just Received from France and Germany.  
 New Toys and Games for the Young and Old.  
 ENGLISH WATCHES  
**PIANO FORTES,**  
 OUR PET ALPHABET!  
**FAIRS**

GRAPHIC PROPS



CONCEPT

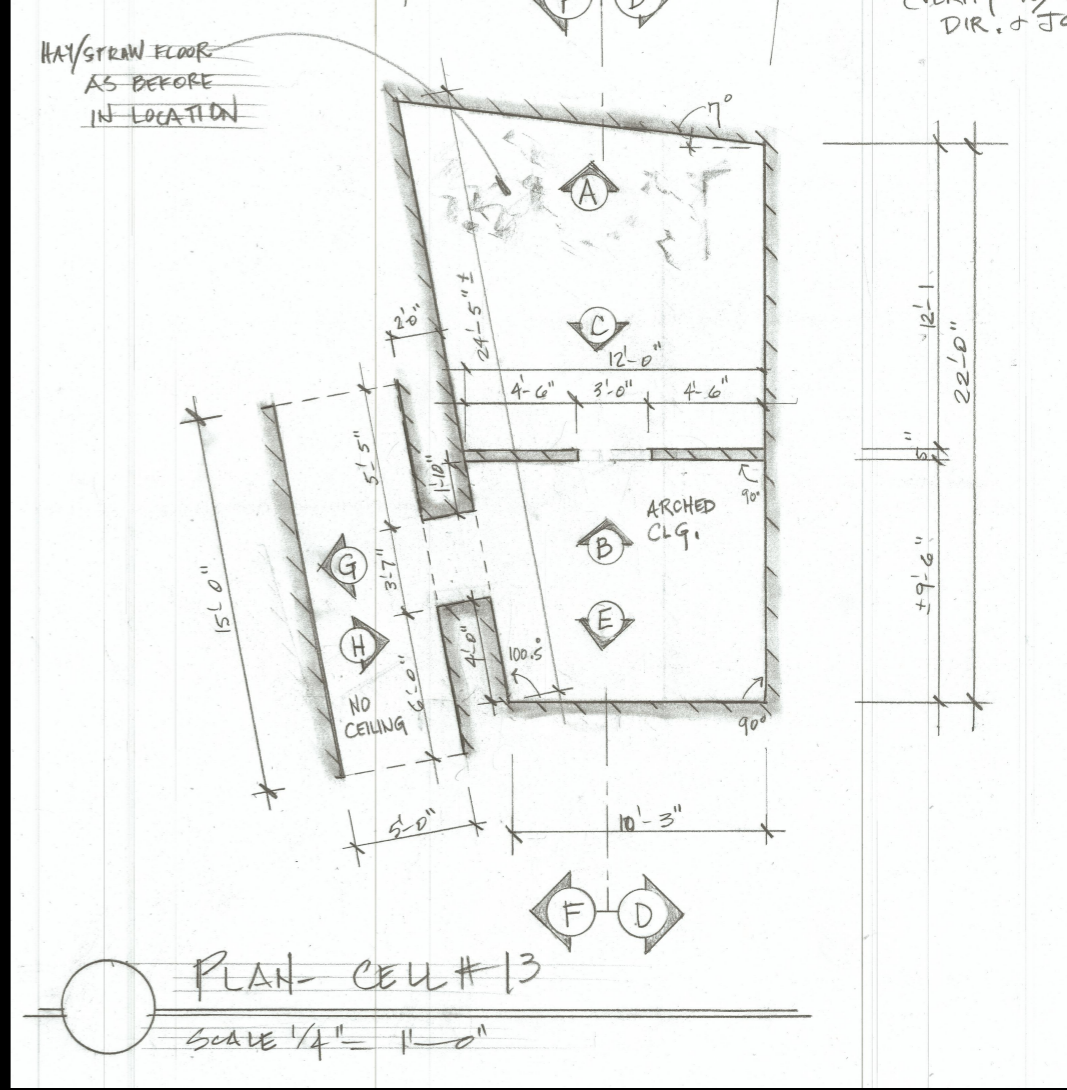


FINAL IMAGE

EXT. MONASTERY GARDENS



EXT. ARLINGTON CEMETERY



INT. CAPITOL PRISON CELL



CONCEPT

ANDRES PARADA



FINAL IMAGE

EXT. STREETS OF RICHMOND 1865



INT. SURRETT'S TAVERN



United States of America — Department of War  
FREEDMEN'S BUREAU.

To Major Simms 1865

In accordance with Major General  
Sherman's Order No. 15, permission  
is hereby granted to take possession  
of and occupy forty acres of land  
situated in Georgetown, Maryland

By order of Gilbert Sillberry,  
Lieut. and General  
Superintendent of Freedmen

EXT. MARY SIMM'S HOUSE

Chloe Arbiture  
Production Designer

Jonathan Bell  
Supervising Art Director

Lisa Alkofer  
Set Decorator

Ryan Brett Puckett   Christina Kim   Miguel Lopez-Castillo   T Stefan Gesek   Jann Engel  
Art Directors

Adele Plauche   John Moredock   Jeff Beck   Samantha Klemm   Keene Kopper  
Set Designers

David Tousley   Gina Alessi   Sarah Stimpson  
Graphic Designers

Zac Baze   Chelsea Morgan   Brynna Norvell  
Asst. Art Directors

Andréa Dopaso   Andrés Parada  
Concept Artists

Cameron Lowande  
Property Master

John Rutchland   Steve Broussard  
Construction Coordinators

Tony Gaudio  
Lead Scenic Painter

Carey Bowen  
Sarah True  
Art Department Coordinators

