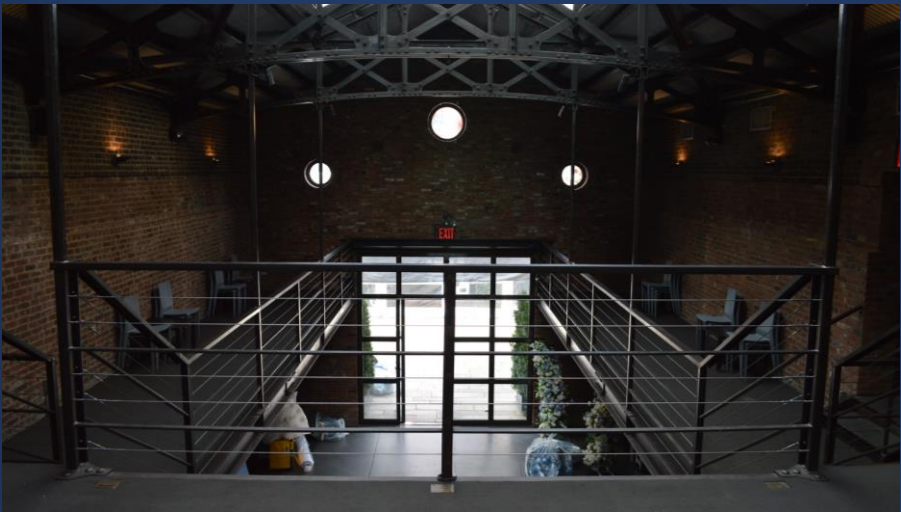


ELSBETH



EPISODE 110
PRODUCTION DESIGN



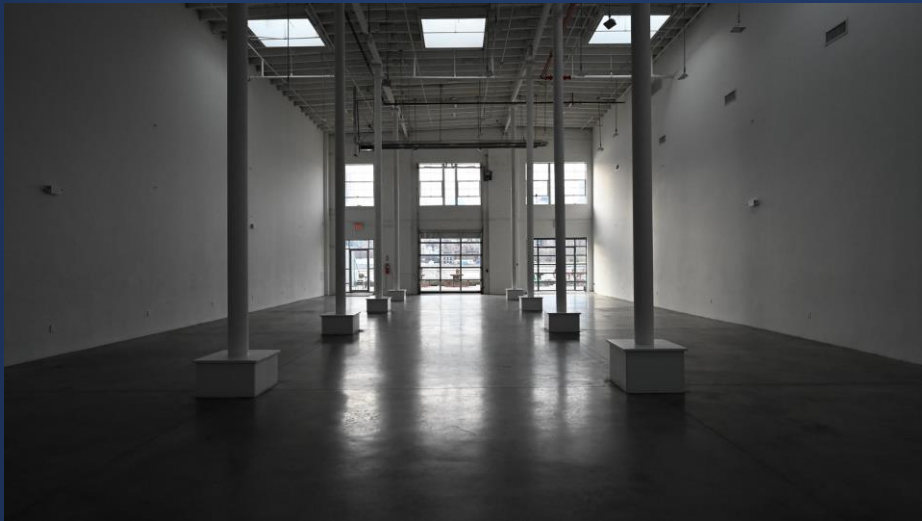
















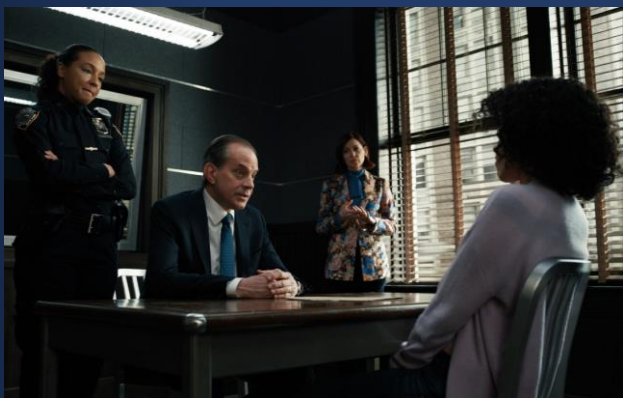


SKETCHES



ELSBETH

POLICE PRECINCT: INTERROGATION ROOM & ELSBETH'S OFFICE

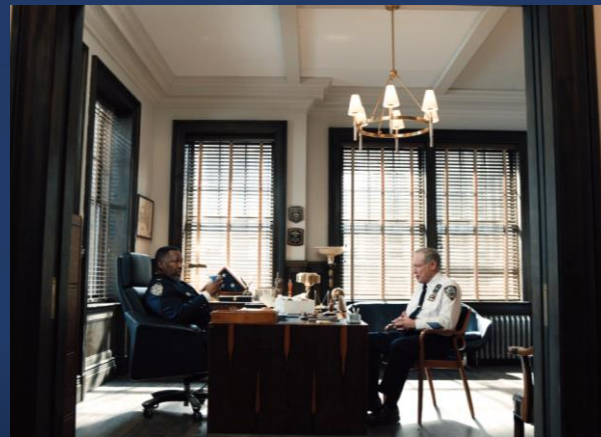


STAGEBUILD

Production Design: Nick Francone - Art Director: Ted LeFevre - Set Decorator: Susan Ogu



SKETCHES



ELSBETH

POLICE PRECINCT: ELEVATORS AND HALLWAYS



SKETCHES

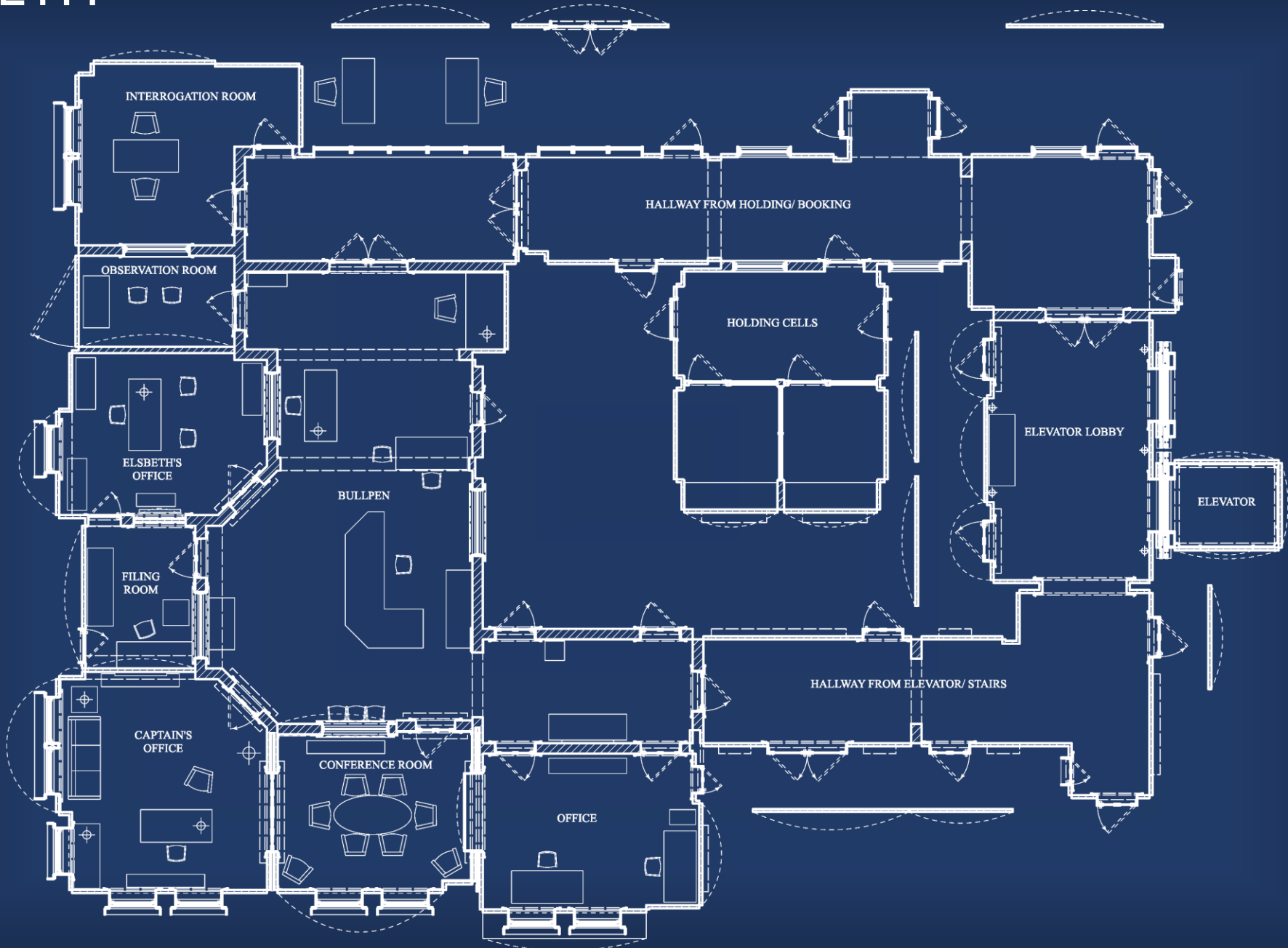


STAGEBUILD

Production Design: Nick Francone - Art Director: Ted LeFevre - Set Decorator: Susan Ogu

ELSBETH

POLICE PRECINCT: PLAN VIEW



STAGEBUILD

Production Design: Nick Francone - Art Director: Ted LeFevre - Set Decorator: Susan Ogu

ELSBETH



Production Design: Nick Francone – Art Director: Ted LeFevre – Set Decorator: Susan Ogu

Elsbeth Season 1 Art Department

Production Design – Nick Francone

Art Director – Ted LeFevre

Set Decorator – Susan Ogu

Assistant Art Directors –
Emma Mendelson / Stephen Davan

Assistant Set Decorators –
Sarah Ogu / Kelly Davis

Graphic Design –
Joanna Mulder / Amanda Boucher

Set Decoration PA – Becca Silverstone

Location Manager – Robert Herling

Art Department Coordinator – Emily Ennis

Art PA – Sarah Morse

Construction Coordinator – Jesse Gertsen

Charge Scenic – Holly Moore

Leadman – Vic Marrone