



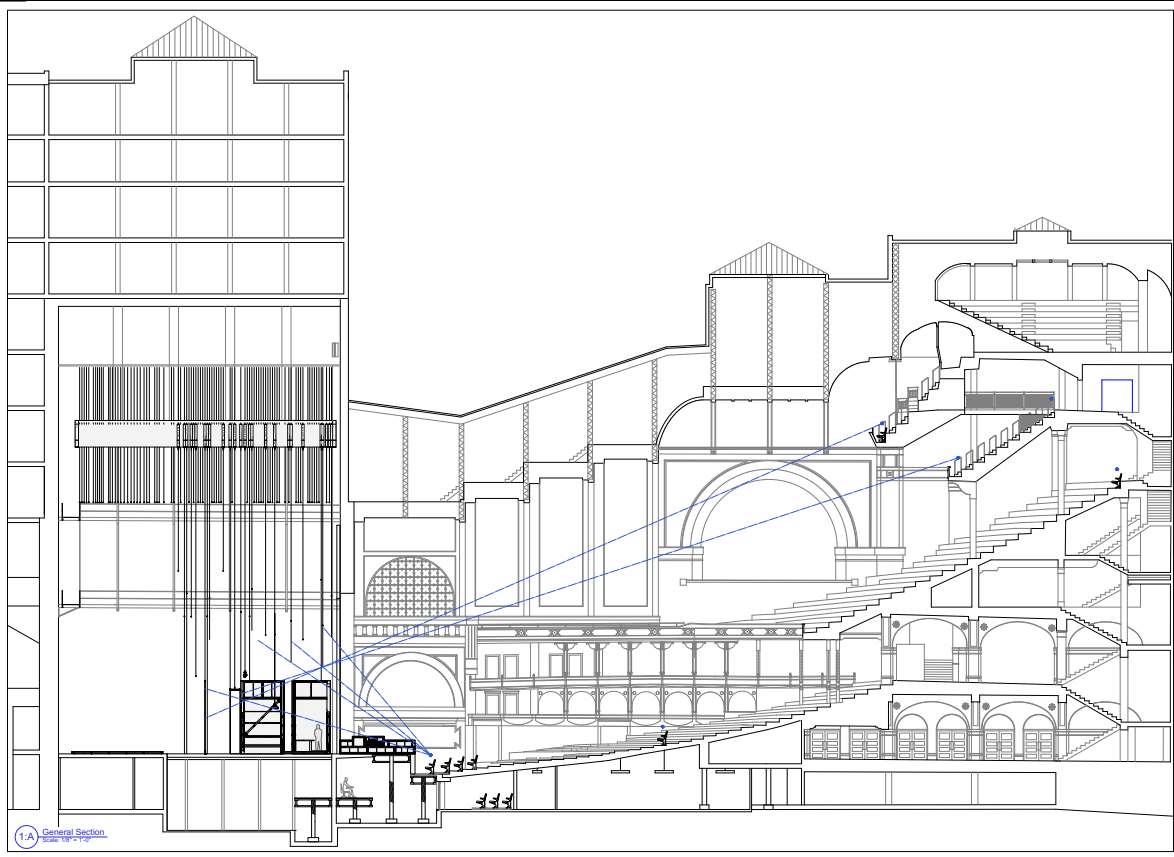
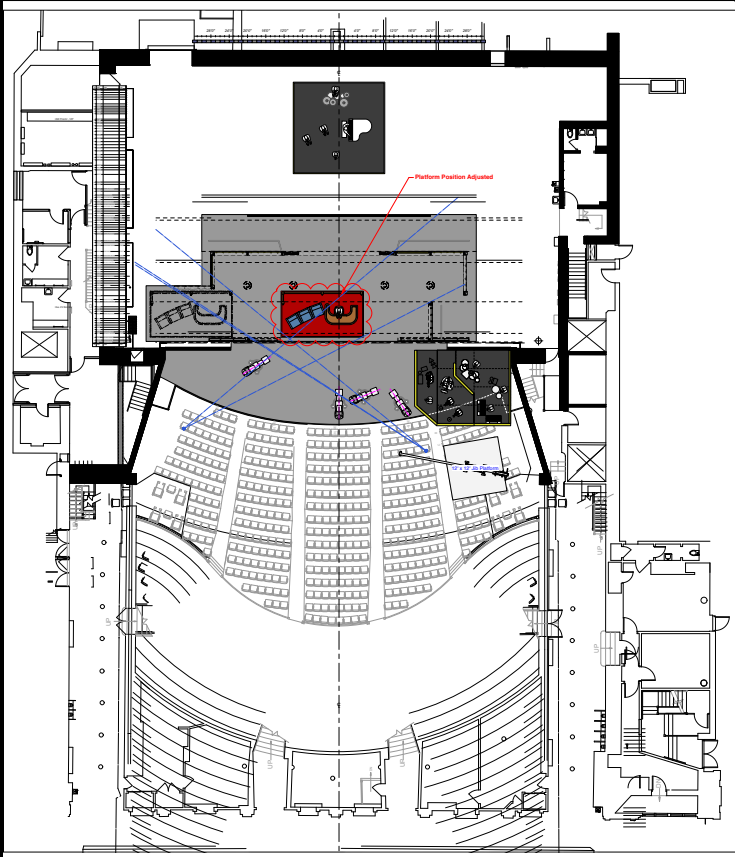
the LATE SHOW with stephen colbert
Chicago
Live

Production Designers: Jim Fenhagen & Larry Hartman || Art Directors: Brendan Hurley & Riley Mellon

LATE
SHOW
with
stephen
colbert
Chicago
Live



LATE
SHOW
stephen
colbert
Chicago
Live



1/A General Section
Scale: 1/8" = 1'-0"

Ferhagen Design LLC
141 Douglas Street
Detroit, MI 48202
(313) 466-0224
ferhagen@ferhagen.com



Issue Record

No.	Description	Date
1	Issue for Shop Bid	5/14/24

B-FOR SHOP BID

SHOP TO CONFIRM ALL VIEWS, DIMENSIONS AND OBSTRUCTIONS BEFORE CONSTRUCTION

THIS DRAWING REPRESENTS THE DESIGN OF THE PROJECT AND IS NOT TO BE USED FOR CONSTRUCTION. THE CONTRACTOR SHALL VERIFY ALL DIMENSIONS AND OBSTRUCTIONS BEFORE CONSTRUCTION. THE CONTRACTOR SHALL BE RESPONSIBLE FOR OBTAINING ALL NECESSARY PERMITS AND APPROVALS. THE CONTRACTOR SHALL BE RESPONSIBLE FOR OBTAINING ALL NECESSARY PERMITS AND APPROVALS. THE CONTRACTOR SHALL BE RESPONSIBLE FOR OBTAINING ALL NECESSARY PERMITS AND APPROVALS.

LATE SHOW
stephen colbert

Auditorium Theater
Lead In: Chicago
Launch: August 2024

General Section

Original Issue: 5/3/24
Current Issue: 5/14/24
Scale: As Noted
Drawn by: DVM
Checked:

2.00

LATE SHOW
stephen colbert
Chicago Live

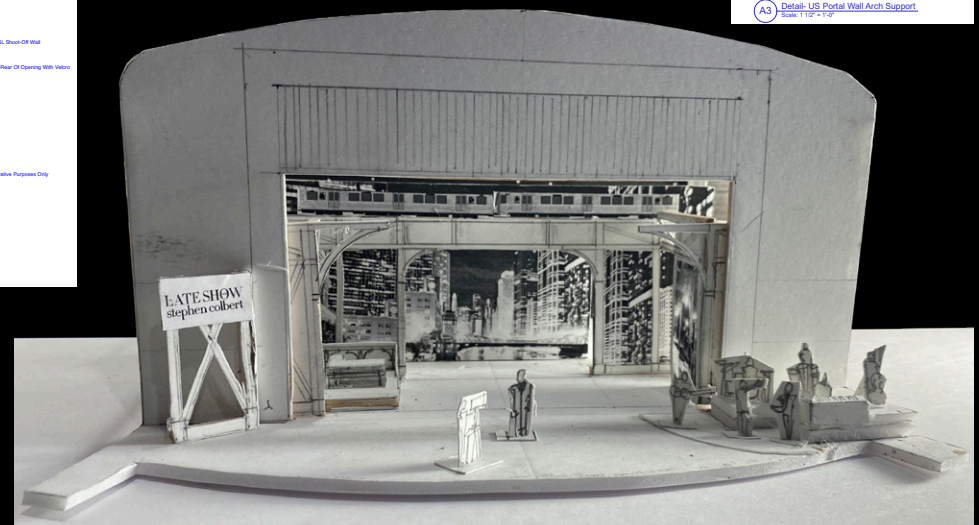
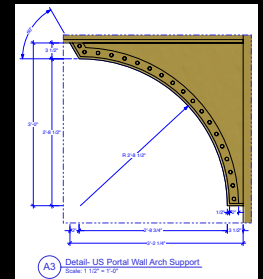
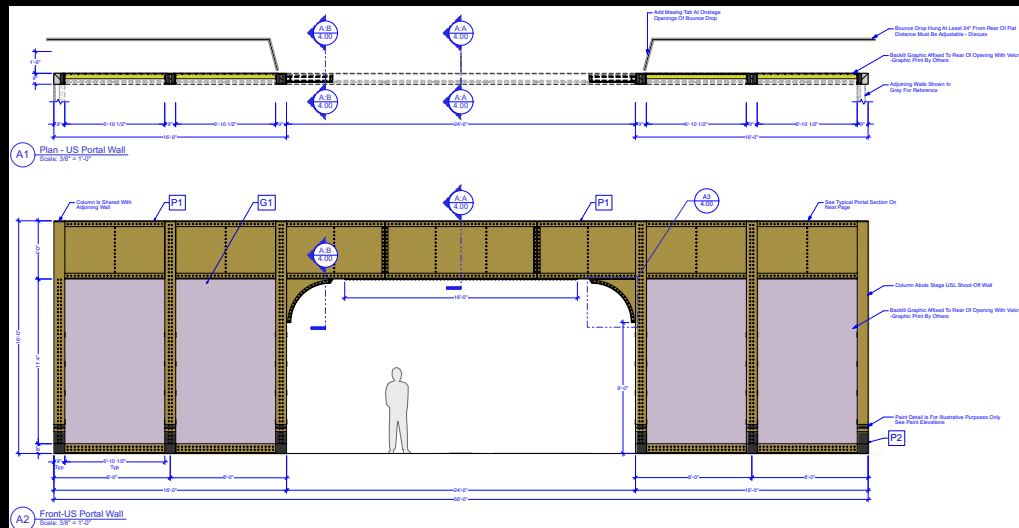
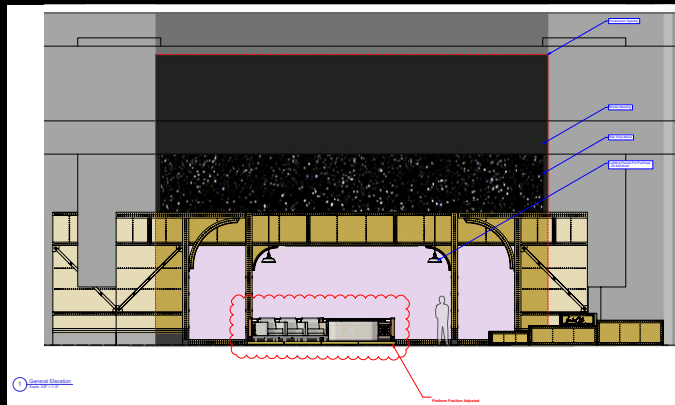


LATE
SHOW
stephen
colbert
Chicago Live

MONOLOGUE

CBS

LATE
SHOW
Chicago Live



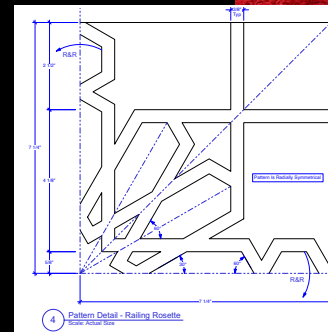
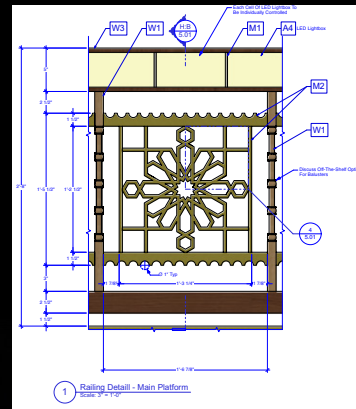
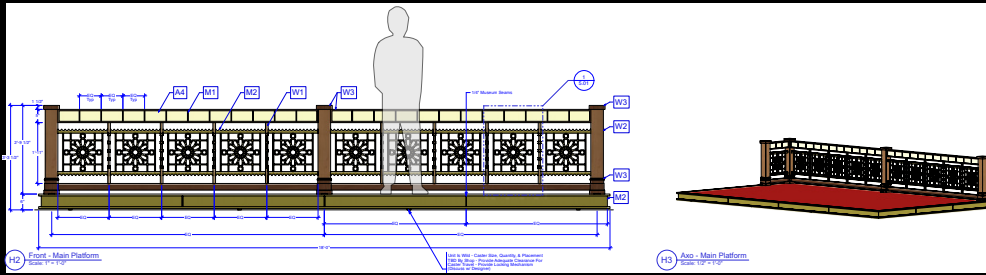
LATE
SHOW
stephen
colbert
Chicago
Live

MONOLOGUE DESIGN



LATE
SHOW
stephen
colbert
Chicago
Live

HOME BASE



Stephen's Close-up



LATE
SHOW
stephen
colbert
Chicago
Live

HOME BASE DESIGN

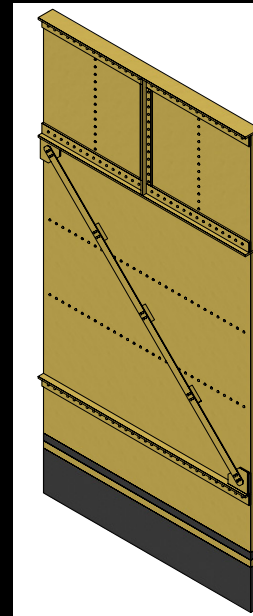


LATE
SHOW
stephen
colbert
Chicago Live

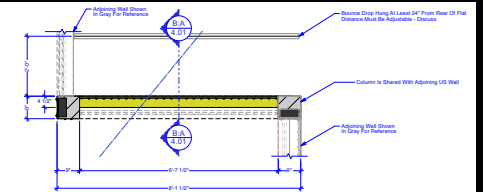
GUEST ENTRANCE



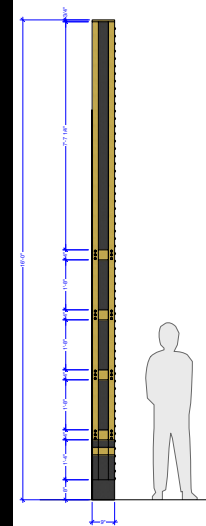
Guest Entrance



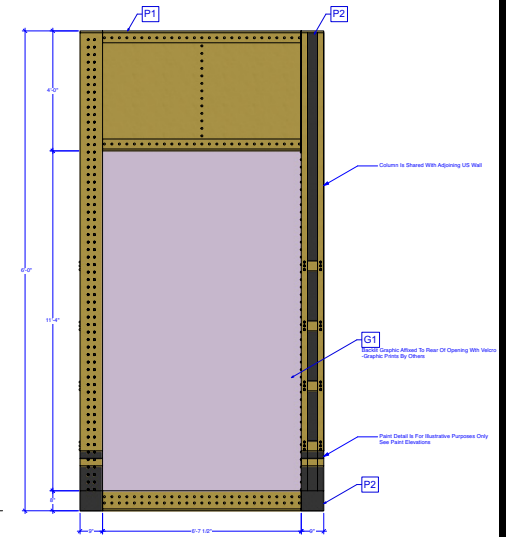
E3 Right Iso - Stage Right Masking Wall
Scale: 3/4" = 1'-0"



B1 Plan - Stage Right Portal Wall
Scale: 3/4" = 1'-0"



B3 Downstage Side - Stage Right Portal Wall
Scale: 3/4" = 1'-0"



B2 Front - Stage Right Portal Wall
Scale: 3/4" = 1'-0"



LATE
SHOW
stephen
colbert
Chicago
Live

GUEST INTERVIEW

LATE
SHOW
Chicago
Live



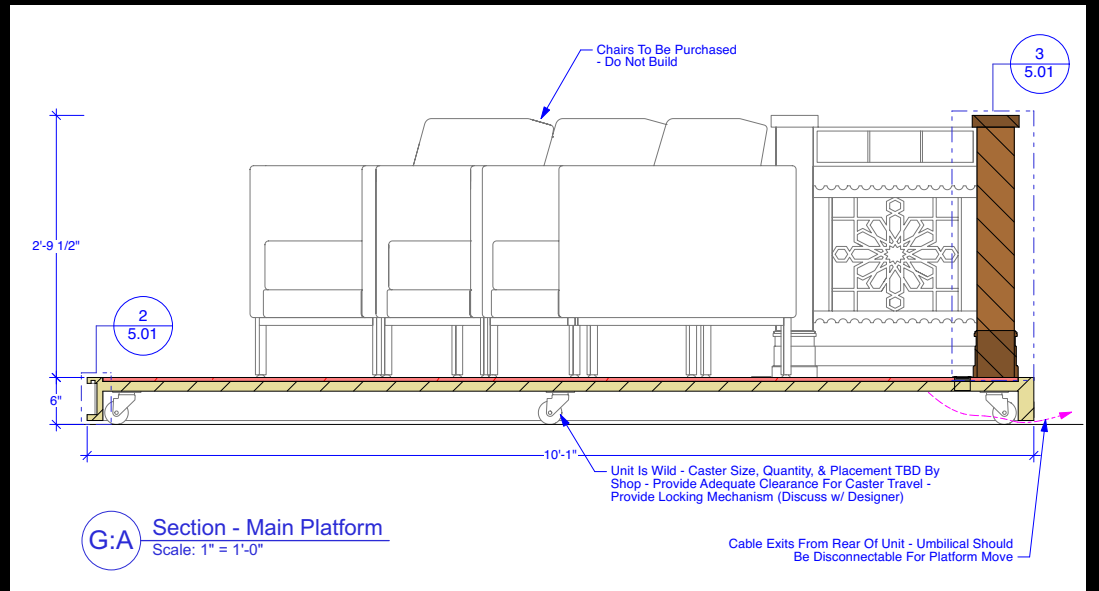
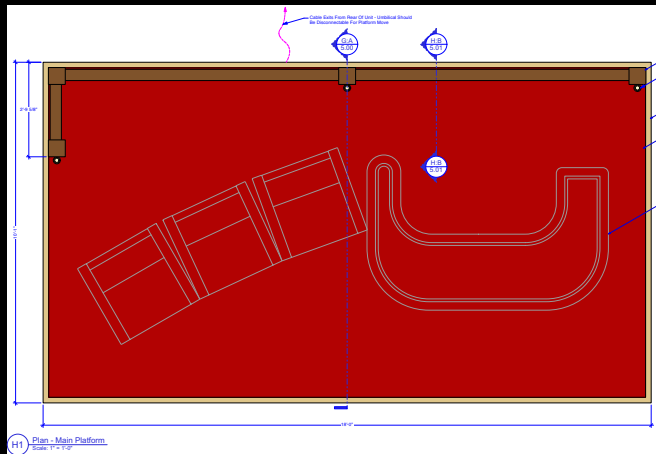
Interview



Guest Close-up 1



Desk View 1

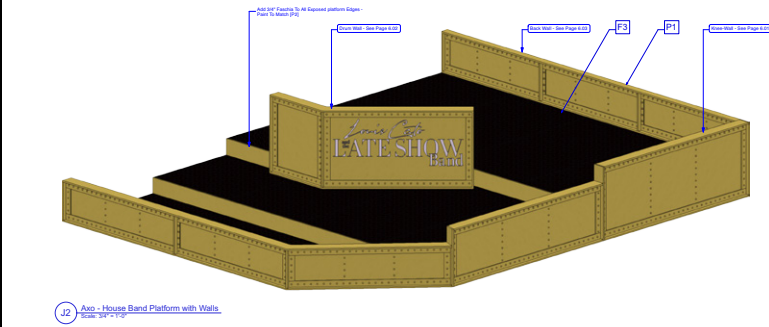
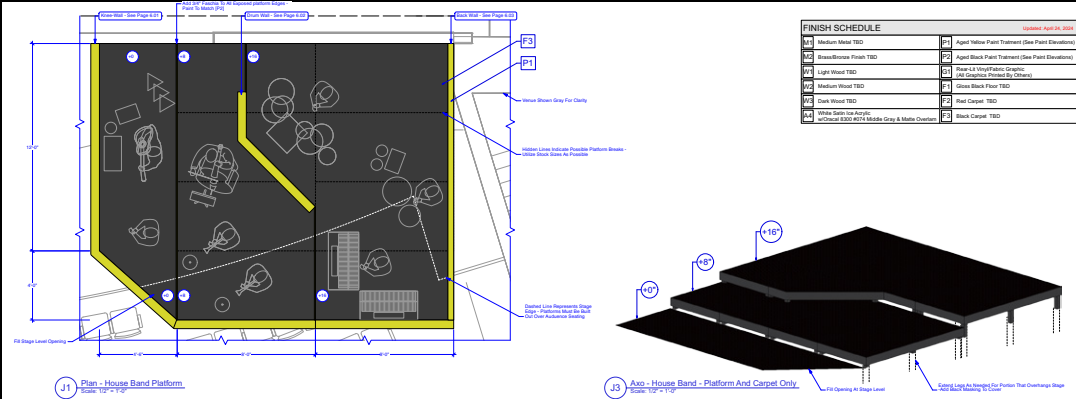


G:A Section - Main Platform
Scale: 1" = 1'-0"

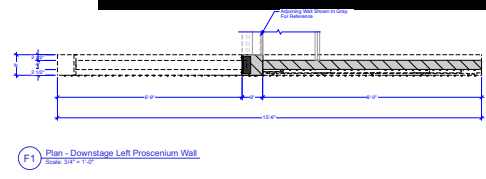


LATE
SHOW
stephen
colbert
Chicago
Live

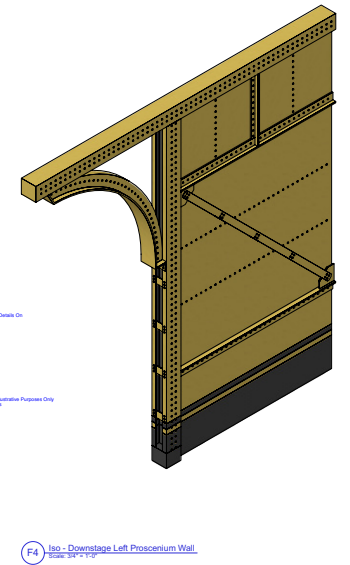
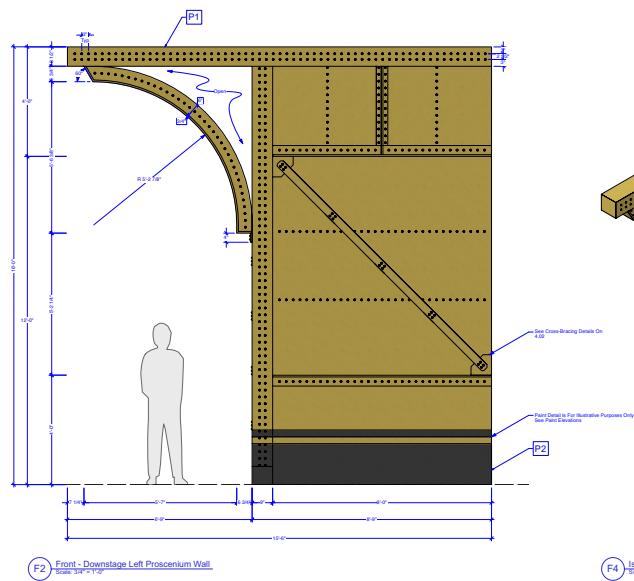
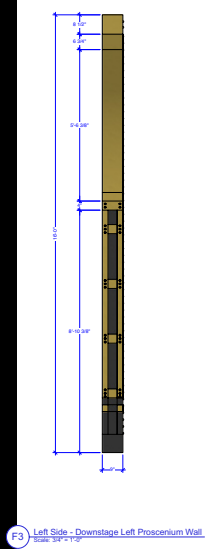
LOUIS CATO & THE LATE SHOW BAND



Build [2]
-Stage Left Side Shown
-R&R For Stage Right



FINISH SCHEDULE		Updated: April 24, 2014	
M1	Medium Wood T&D	P1	Agel Yellow Paint Treatment (See Paint Elevations)
M2	Brown/Bronze Finish T&D	P2	Agel Black Paint Treatment (See Paint Elevations)
M3	Light Wood T&D	S1	Panel-LX Vinyl/Fabric Graphic (All Graphics Printed By Others)
M4	Medium Wood T&D	F1	Glass Back Floor T&D
M5	Dark Wood T&D	F2	Red Carpet T&D
M6	White Satin Oak Acrylic (Cherry 8302) w/10% Middle Gray & Maple Overlay	F3	Black Carpet T&D



LOUIS CATO & THE LATE SHOW BAND DESIGN



CBS

O'ER THE LAND OF THE BEAN



CBS

DA BEARS!



LATE
SHOW
stephen
colbert
Chicago
Live

IN THE FIELD



the LATE SHOW with stephen colbert

Chicago Live

