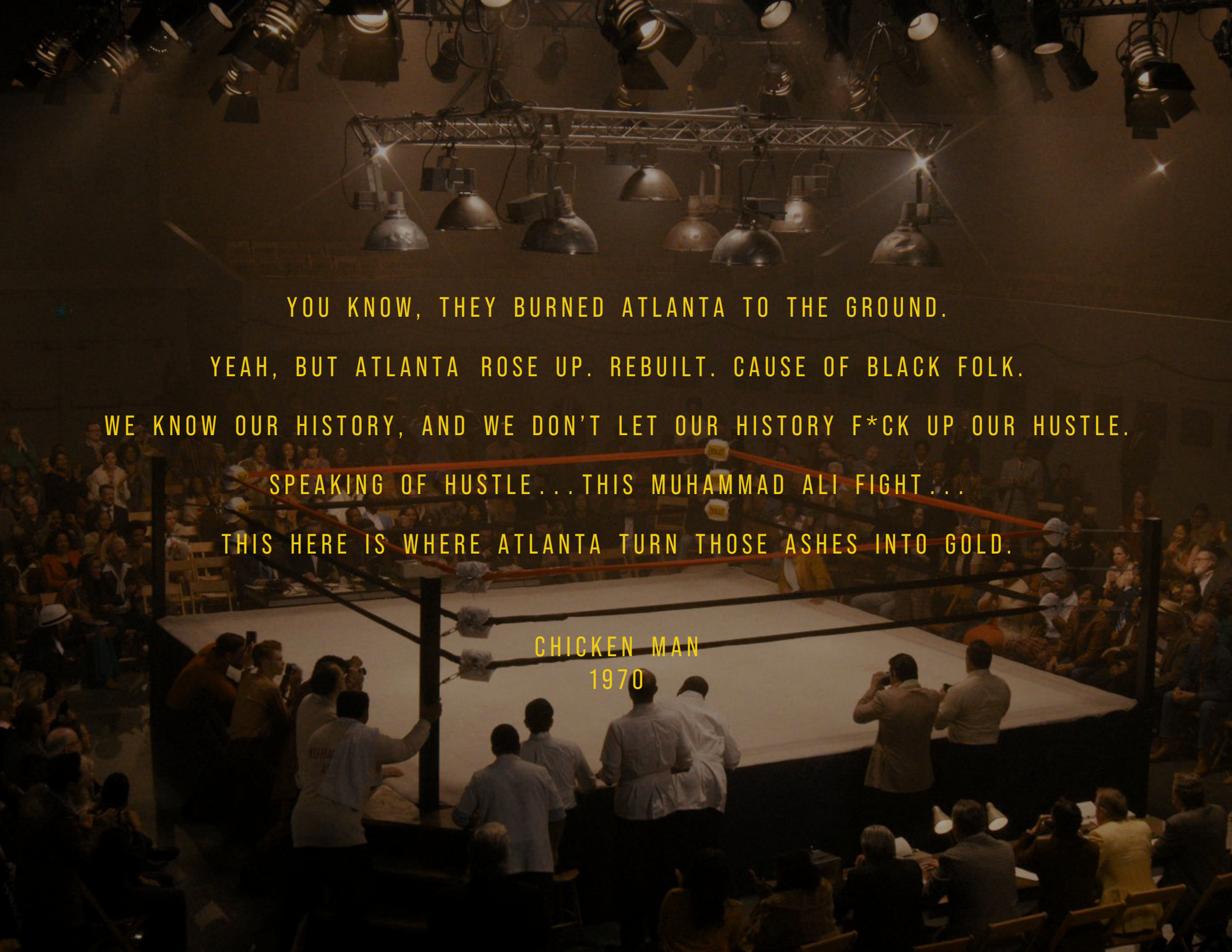




Fight Night

THE MILLION DOLLAR HEIST

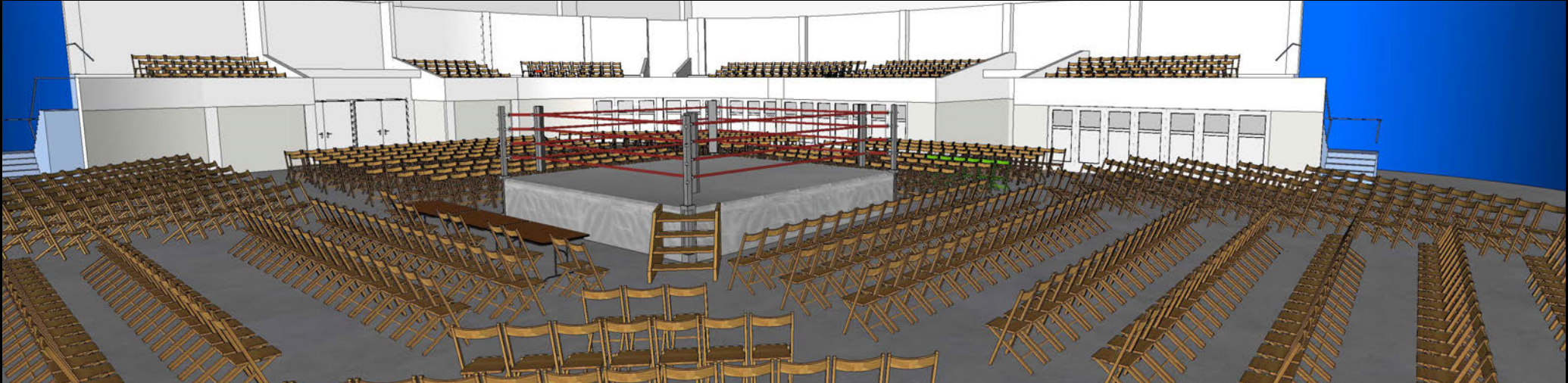
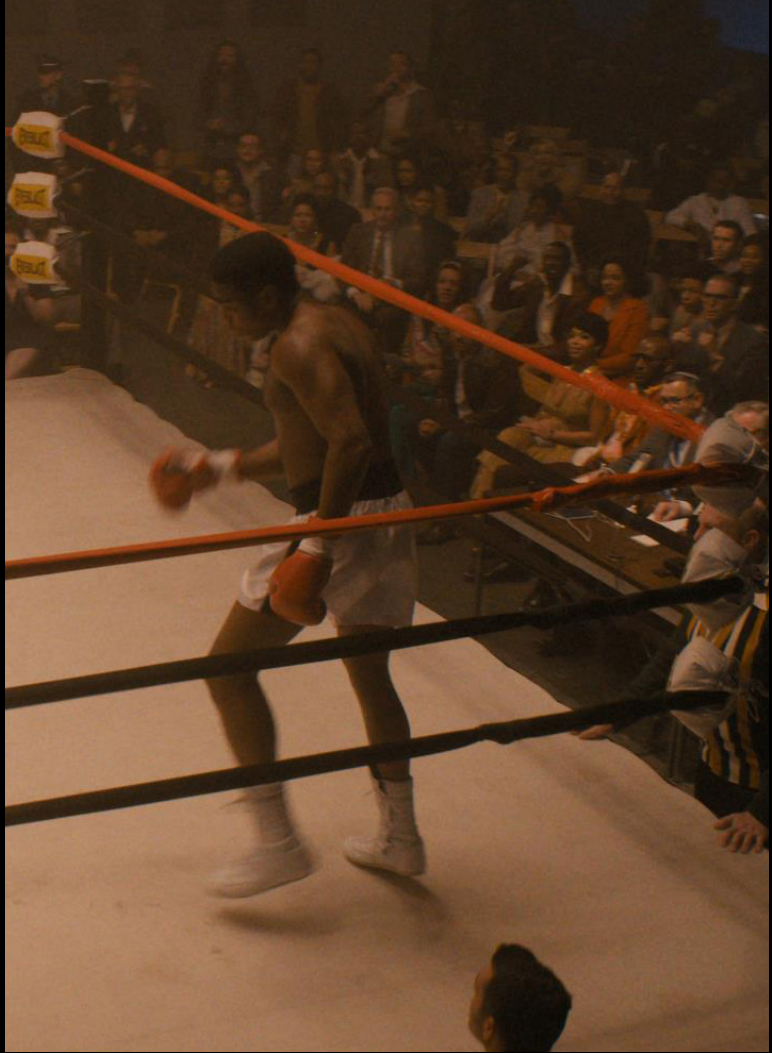
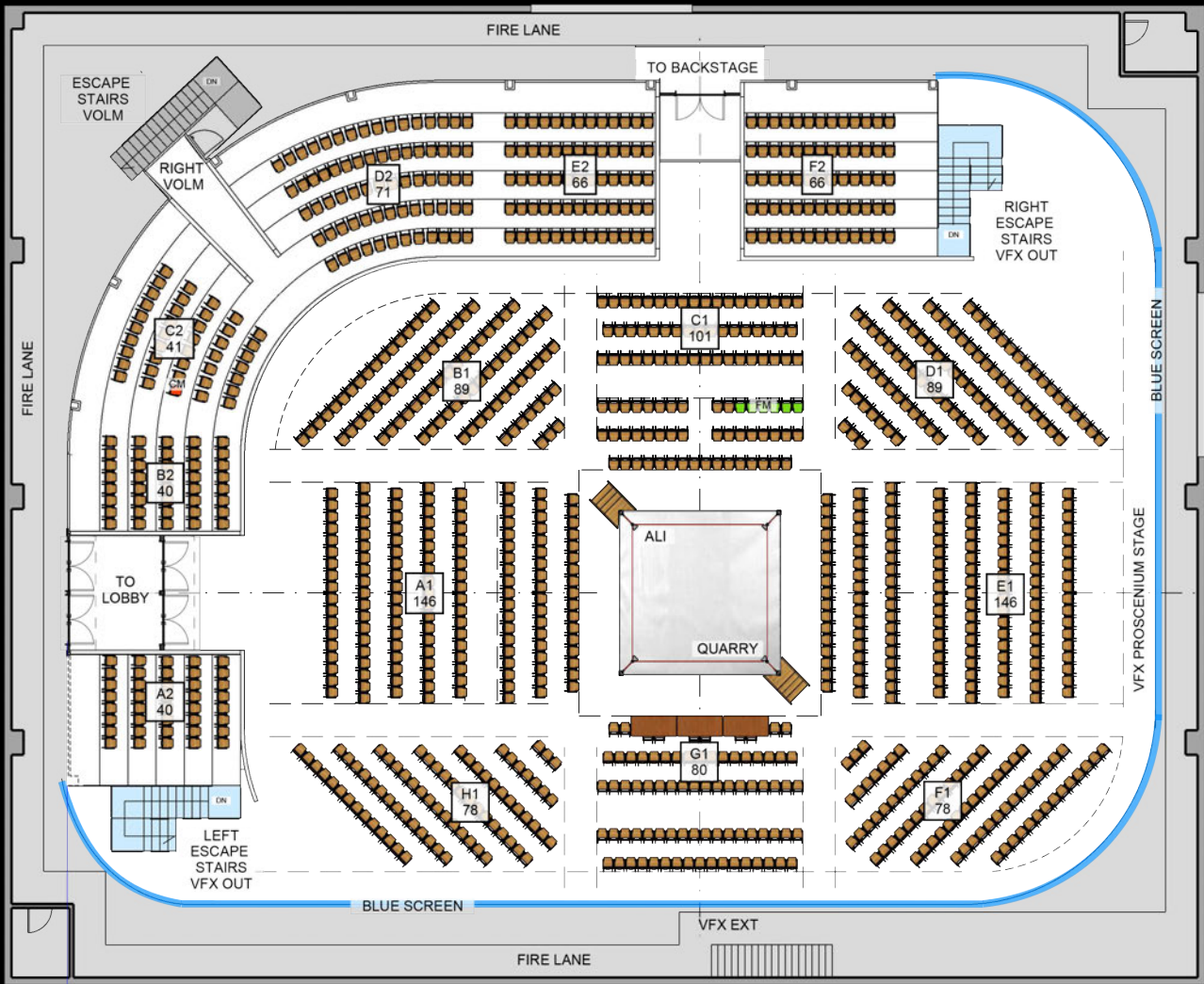
A wide-angle shot of a boxing ring in a large arena. The ring is in the center, with a white mat and black ropes. Several men in white shirts are standing around the ring, possibly trainers or officials. The arena is filled with a large crowd of spectators, mostly men, some wearing hats. The lighting is dramatic, with many spotlights hanging from the ceiling, creating a warm, golden glow. The text is overlaid in a yellow, monospace font.

YOU KNOW, THEY BURNED ATLANTA TO THE GROUND.
YEAH, BUT ATLANTA ROSE UP. REBUILT. CAUSE OF BLACK FOLK.
WE KNOW OUR HISTORY, AND WE DON'T LET OUR HISTORY F*CK UP OUR HUSTLE.
SPEAKING OF HUSTLE... THIS MUHAMMAD ALI FIGHT...
THIS HERE IS WHERE ATLANTA TURN THOSE ASHES INTO GOLD.

CHICKEN MAN
1970



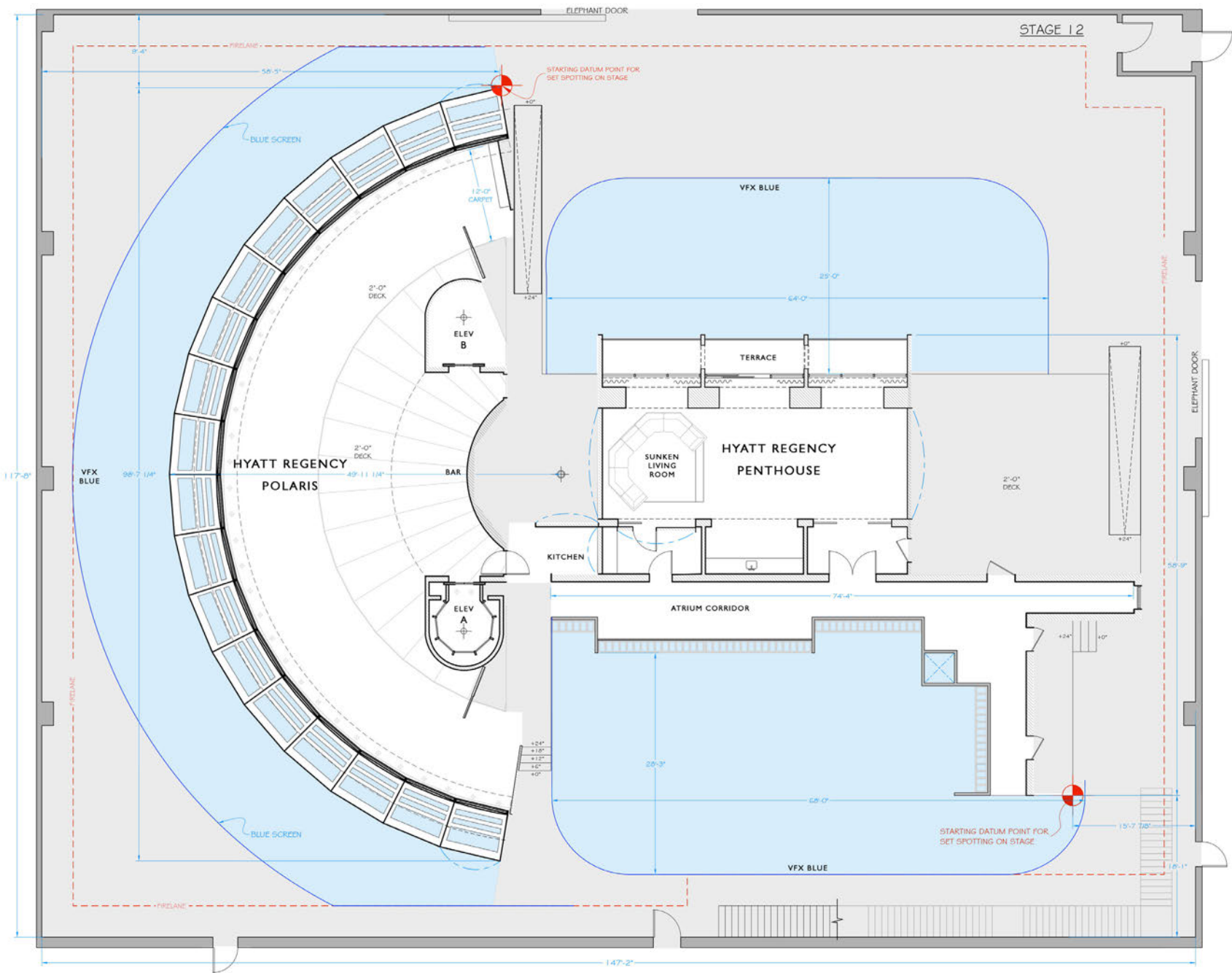
MUNICIPAL AUDITORIUM





HYATT REGENCY PENTHOUSE SUITE





Fight Night

THE MILLION DOLLAR HEIST

director CRAIG BREWER

production designer TONI BARTON

supervising art director MARK DILLON

set decorator LANCE TOTTEN

episode 101 + 102

set name INT HYATT REGENCY

drawing SPOTTING PLAN

location STAGE 12

scale 3/16" = 1'-0"

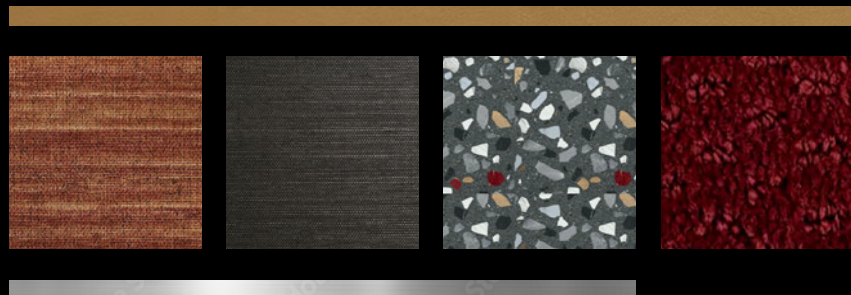
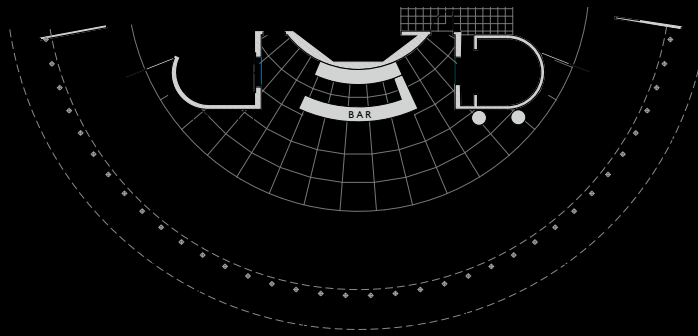
date 23 JAN 24

revision

drawn by CB

set #	012	plate #	
	013		
	014		



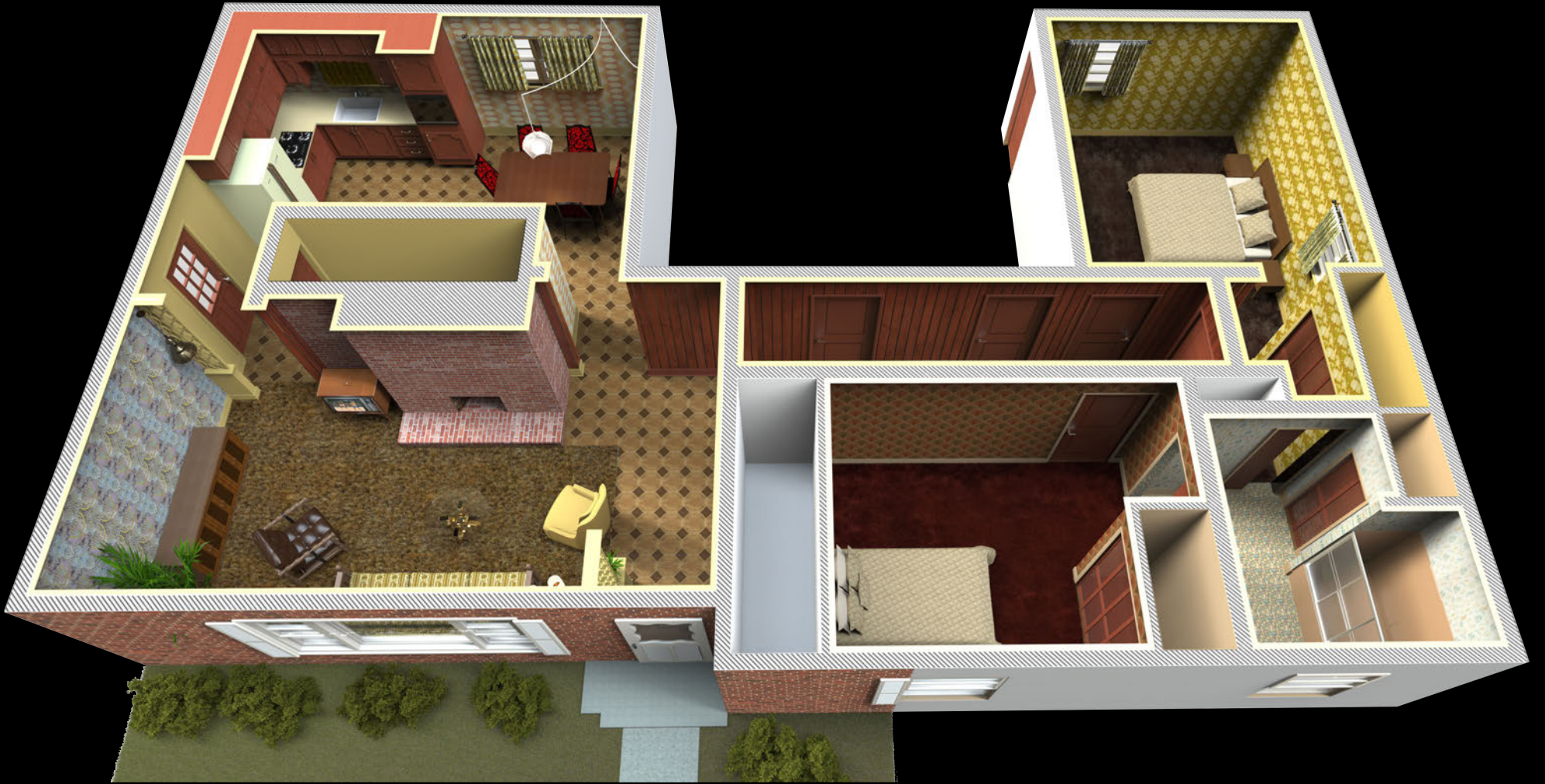


HYATT REGENCY POLARIS BAR

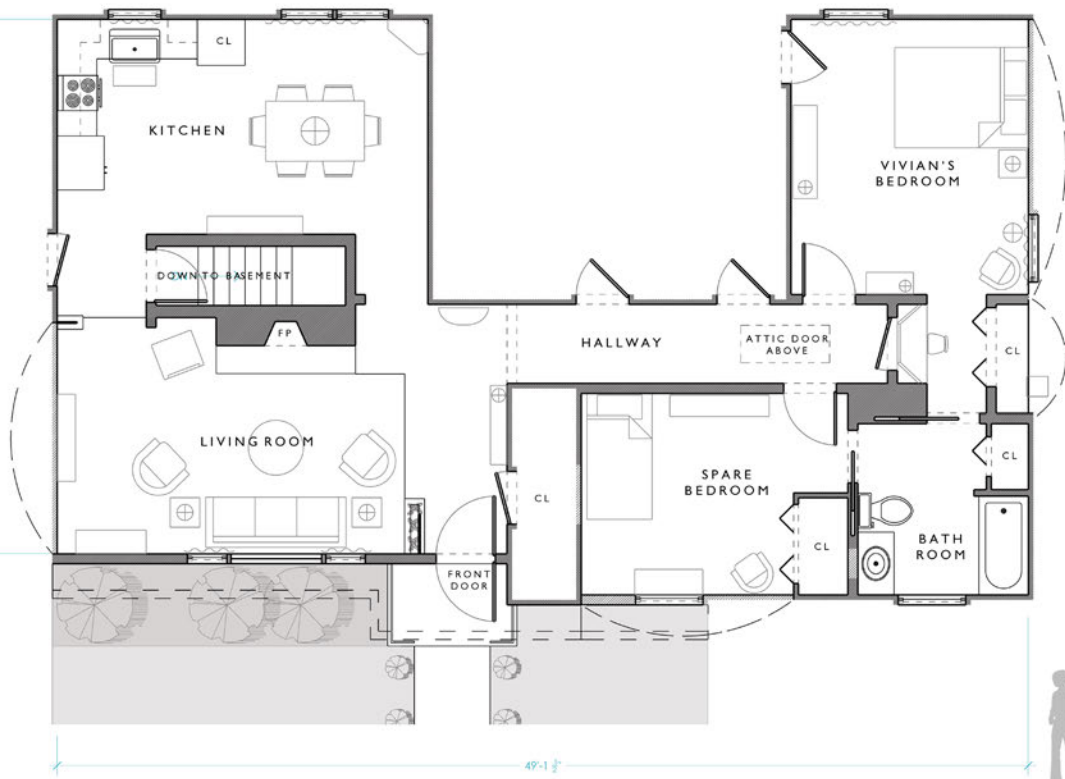




CHICKEN MAN'S PARTY HOUSE







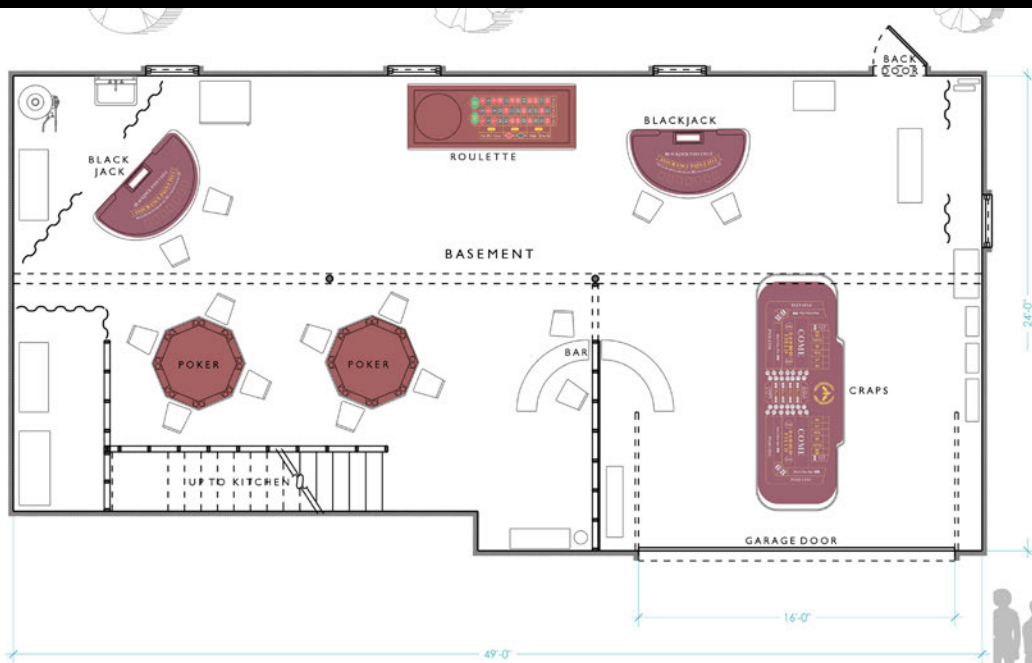
Fight Night

THE MULLAN MULLAN HEIST

director CRAIG BREWER
 production designer TONI BARTON
 supervising art director MARK DILLON
 art director LANCE TOTTEN
 episode 101 + 102

set name
 INT CHICKEN MAN'S PARTY HOUSE
 FIRST FLOOR
 DIRECTOR'S PLAN

location STAGE 14
 scale 1/4" = 1'-0"
 date 5 MAR 24
 revision
 drawn by SK
 set # 002 plate # 1A



Fight Night

THE MULLAN MULLAN HEIST

director CRAIG BREWER
 production designer TONI BARTON
 supervising art director MARK DILLON
 art director LANCE TOTTEN
 episode 101 + 102

set name
 INT CHICKEN MAN'S PARTY HOUSE
 BASEMENT
 DIRECTOR'S PLAN

location STAGE 14
 scale 1/4" = 1'-0"
 date 5 MAR 24
 revision
 drawn by SK
 set # 003 plate # 1A













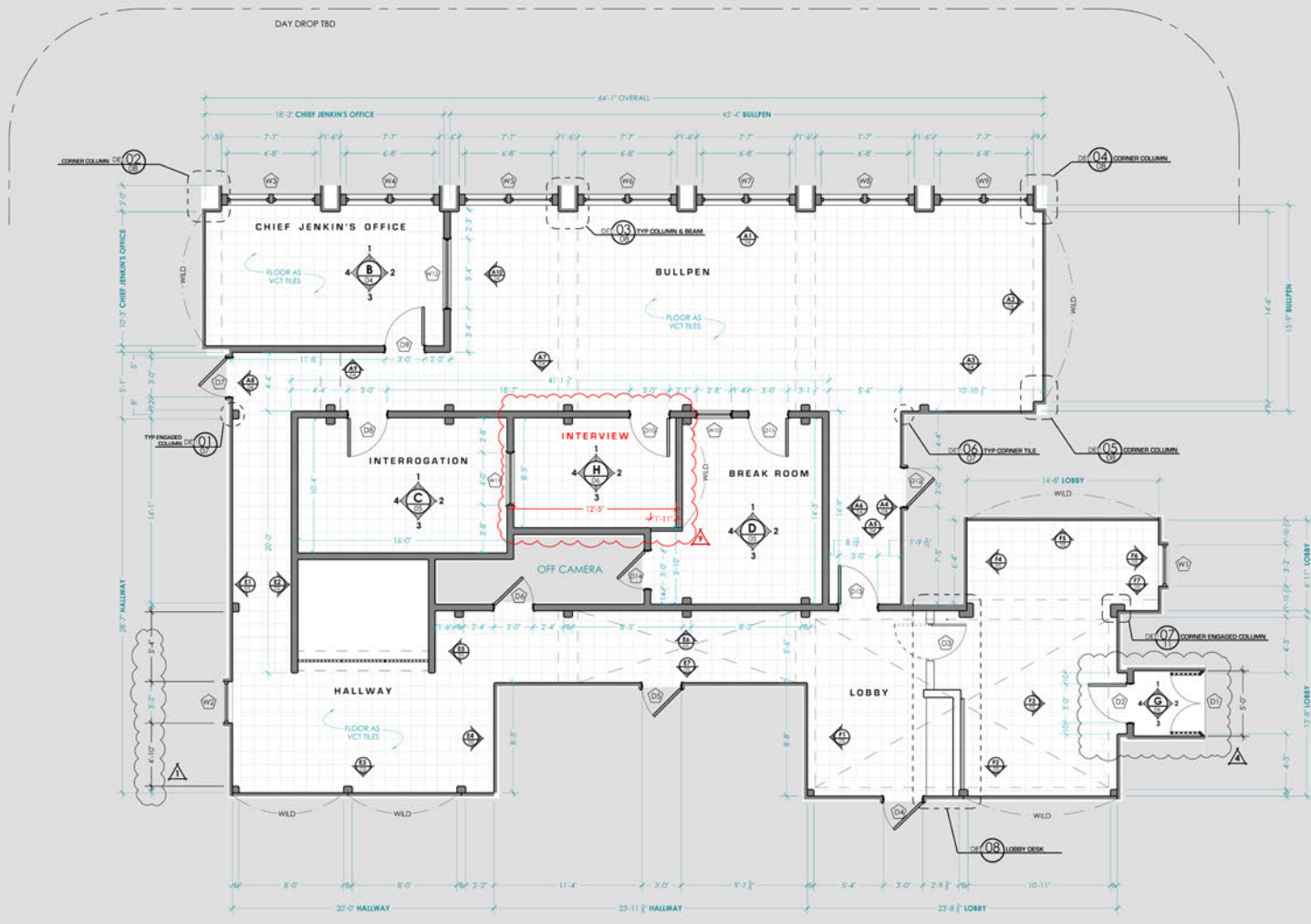
CHICKEN MAN'S FAMILY HOME





ATLANTA POLICE DEPARTMENT PRECINCT





PLAN INT APD PRECINCT
SCALE: 1/4" = 1'-0"

REVISIONS		
⚠	02/06/24	WINDOW 2 MOVED
⚠	02/12/24	VESTIBULE: D2 DOOR SWING CHANGE
⚠	03/11/24	INTERVIEW ROOM ADDED

REVISED
DATE: 03-11-24
TIME: 12:00 PM

REVISED
DATE: 02-06-24
TIME: 3:00 PM

RELEASED
DATE: 02-05-24
TIME: 4:00 PM



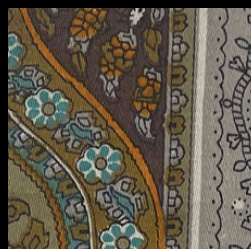
Fight Night

THE MILLION DOLLAR HEIST

director CRAIG BREWER
production designer TONI BARTON
supervising art director MARK DILLON
set decorator LANCE TOTTEN
episode 101 + 102
set name INT APD PRECINCT
drawing PLAN
location STAGE 16
scale 1/4" = 1'-0"
date 4 FEB 24
revision 12 FEB 24
drawn by SK

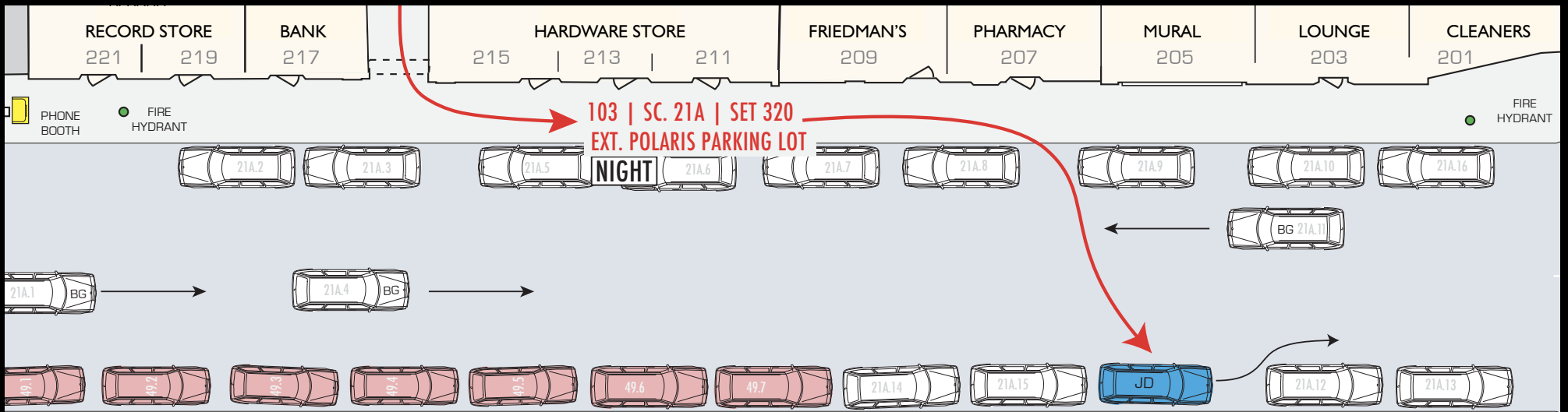
set # 004 - 009 plate # 1





DETECTIVE JD HUDSON'S HOUSE







GAS & FOOD STATION



DOLPHIN CLUB

THE BIG OTIS REDD SHOW OR BEST A



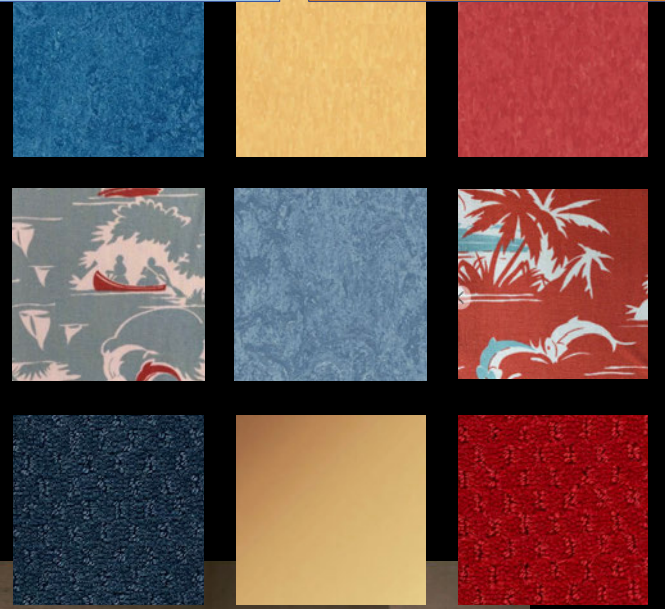
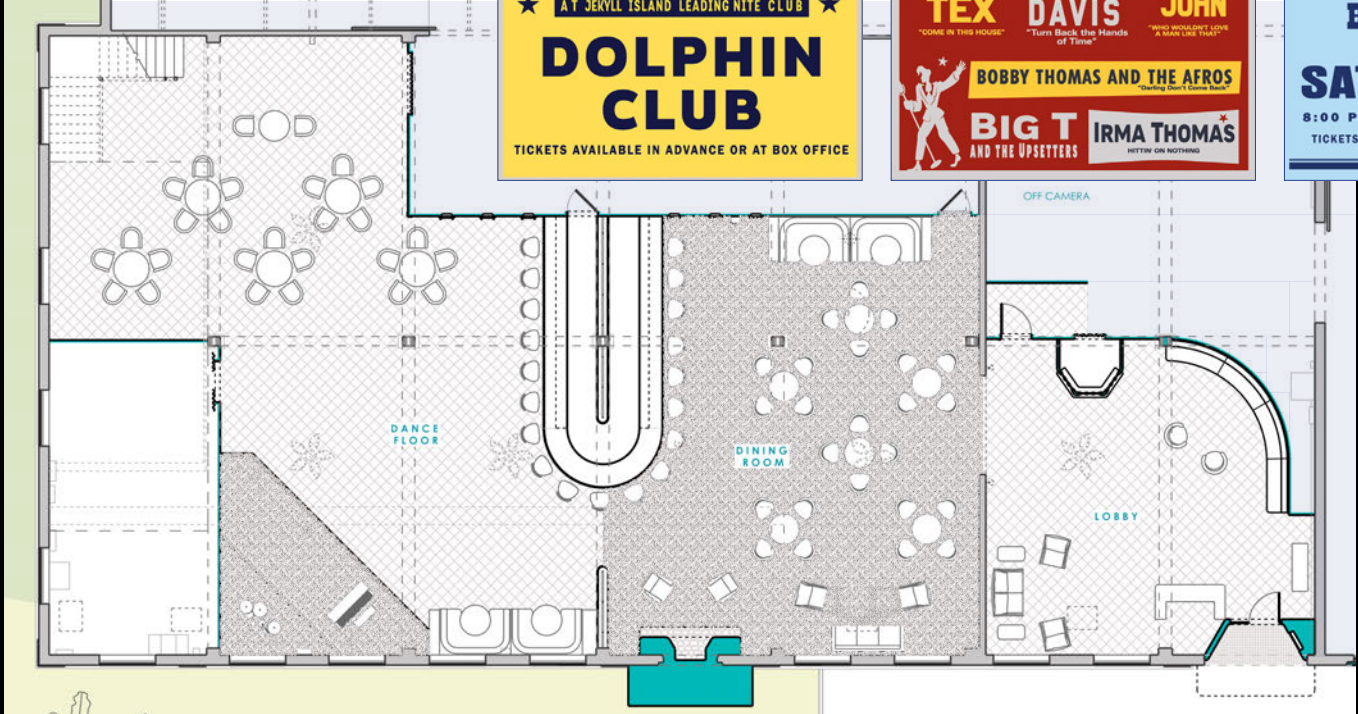
DOLPHIN CLUB, JEKYLL ISLAND

B.B.KING
 "THE THRILL IS GONE"
 FRI. SAT. **SEPT. 8TH and 9TH**
 8:00 P.M. ADVANCE ADMISSION \$1.50
 ★ AT JEKYL ISLAND LEADING NITE CLUB ★
DOLPHIN CLUB
 TICKETS AVAILABLE IN ADVANCE OR AT BOX OFFICE

CONCERT & DANCE
THE DOLPHIN CLUB
 JEKYL ISLAND
MONDAY MAR. 14
 8:00 P.M. ADVANCE ADMISSION \$1.50 - - LAST DAY \$2.00
 TICKETS AVAILABLE IN ADVANCE OR AT BOX OFFICE
OTIS REDDING
 "TRY A LITTLE TENDERNESS"
JOE TEX "COME IN THIS HOUSE"
TYRONE DAVIS "Turn Back the Hands of Time"
MABEL JOHN "WHO WOULD'VE LOVED A MAN LIKE THAT?"
BOBBY THOMAS AND THE AFROS
BIG T AND THE UPSETTERS
IRMA THOMAS "HEY ON NOTHING"

At The **DOLPHIN CLUB**
 JEKYL ISLAND, GA
 Presents
MILLIE JACKSON
 "If You're Not Back In Love By Monday"
 WITH THE **ENCHANTMENT**
 "Thank You Girl For Lovin' Me"
SAT. Nite MAY 29th
 8:00 P.M. ADVANCE ADMISSION \$1.50
 TICKETS AVAILABLE IN ADVANCE OR AT BOX OFFICE

SHOW AND DANCE
THE DOLPHIN CLUB
 7:30 P.M. JEKYL ISLAND
FRI. MAR. 7
 ADMISSION \$3.00
 In Person
PERCY SLEDGE
 "TAKE TIME TO KNOW HER" "COVER ME" "DARK END OF THE STREET"
 "MY LOVER'S PRAYER" "BABY HELP ME"
And The ORCHESTRA

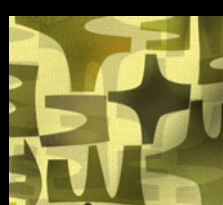
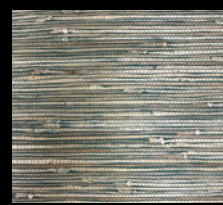




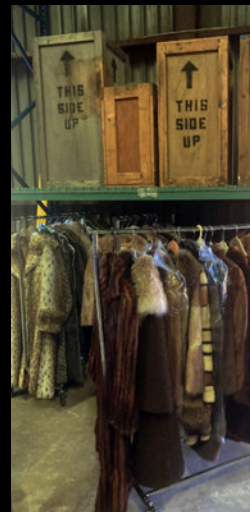




CHOSEN ONE HAIR SALON



SILKY'S HOTEL ROOM



CADILLAC RICHIE'S WAREHOUSE



UNDERGROUND ATLANTA



PAINTER'S HOUSE





HIDEY - HO MOTEL



RICH'S DEPARTMENT STORE



PINKY PIES DINER



FRANK'S CONSTRUCTION TRAILER

Fight Night

THE MILLION DOLLAR HEIST

PRODUCTION DESIGNER
TONI BARTON

SUPERVISING ART DIRECTOR
MARK DILLON

SET DECORATOR
LANCE TOTTEN

ASSISTANT ART DIRECTOR
JESSICA JACKSON

ART DIRECTOR
MARYBETH MCCAFFREY

ASSISTANT ART DIRECTOR
JUSTIN JORDAN

GRAPHIC DESIGNER
SHAQUANA SIMMONS

GRAPHIC DESIGNER
JOSH DOLLISON

GRAPHIC DESIGNER
ZANE REICHERT

ILLUSTRATOR
LANDON LOTT

SET DESIGNER
SAMANTHA KLEMM

SET DESIGNER
CECELIA BACKIEL

SET DESIGNER
CONNOR BIRLEY

SET DESIGNER
AGNIESZKA SZOSTAKOWSKA

ART DEPT COORDINATOR
JEFF KUJAN

ART PRODUCTION ASSISTANT
SAHURA MALIK

ART PRODUCTION ASSISTANT
KATRINA SKENDER

SET DEC PRODUCTION ASSISTANT
BRENNAN KAHL