

A woman with blonde hair, wearing a shimmering, sequined dress, stands on a stage in a grand, ornate theater. She is viewed from behind, looking out over a large, tiered audience seated in the theater. The stage is lit with a bright spotlight, and the floor is highly reflective, showing the woman's reflection. The theater's architecture is classical, with a large chandelier hanging from the ceiling and decorative elements on the walls. The overall atmosphere is dramatic and elegant.

Nikki Glaser
Someday You'll Die
COMEDY SPECIAL

PRODUCTION DESIGNER
Natacha Aubier-Hatch



SWAG INSPIRATION



07:34:32:07 A001C003 Rec X-OCN ST [AXS] 80min [AXS] 43min
1-CAMERON-1



07:34:32:08 B001C003 Rec X-OCN ST [AXS] 80min [AXS] 43min
2-KARIN-2



07:34:32:07 C001C006 Rec X-OCN ST [AXS] 85min [AXS] 94min
3-MANDE-3



07:34:32:07 D001C002 Rec X-OCN ST [AXS] 35min [AXS] 43min
4-LIONEL-4



07:34:32:07 E001C003 Rec X-OCN ST [AXS] 35min [AXS] 43min
5-GEORGE-5



07:34:32:07 F002C001 Rec X-OCN ST [AXS] 28min [AXS] 43min
6-TRAVIS-6



07:34:32:08 G001C003 Rec [AXS] 27min [AXS] 47min
7-SHANELLE-7



07:34:32:07 H001C005 Rec [AXS] 29min [AXS] 47min
8-AMBER-8

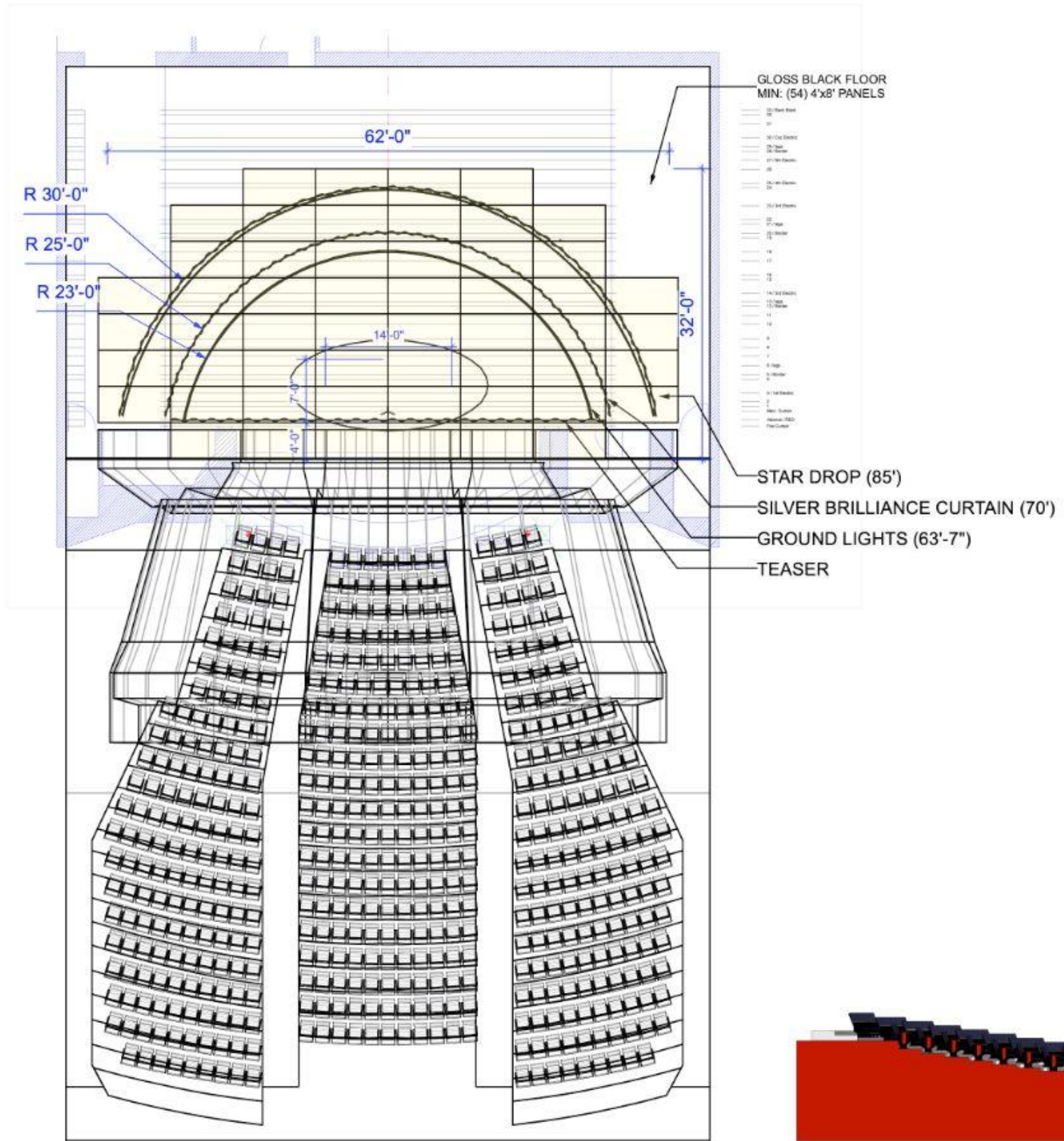


07:34:32:07 I001C003 Rec [AXS] 39min [AXS] 23min
9-LOCKOFF-9

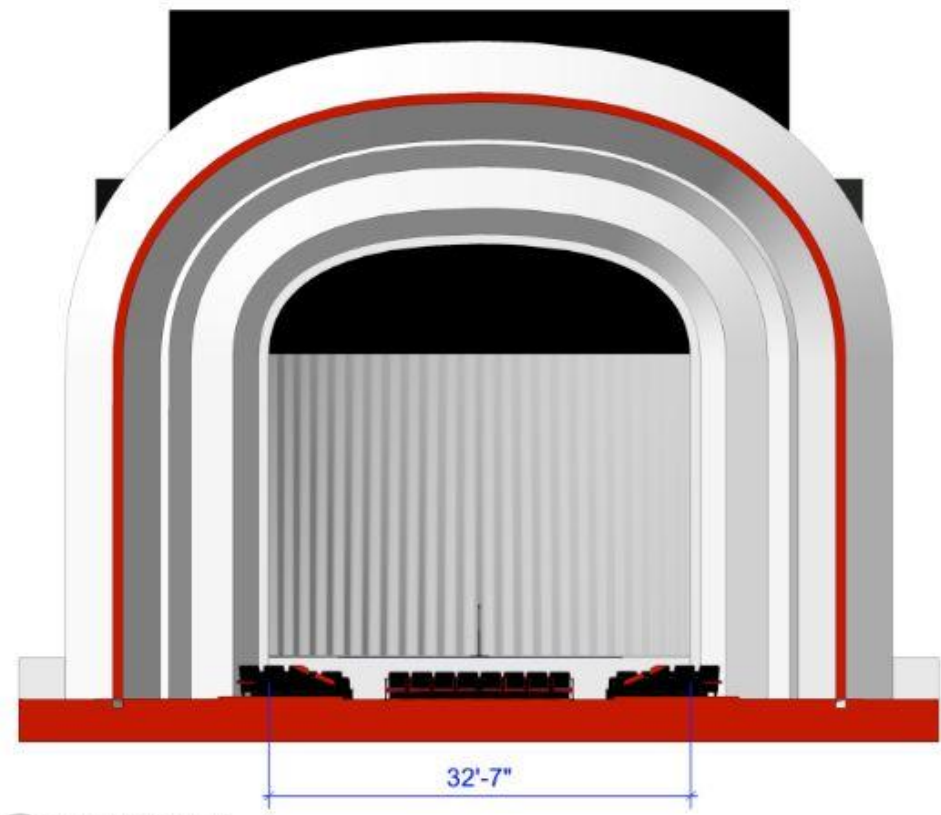
0
7
:
3
4
:
3
2

-POST PARTUM
MOURNING THE LOSS
SHE GONE

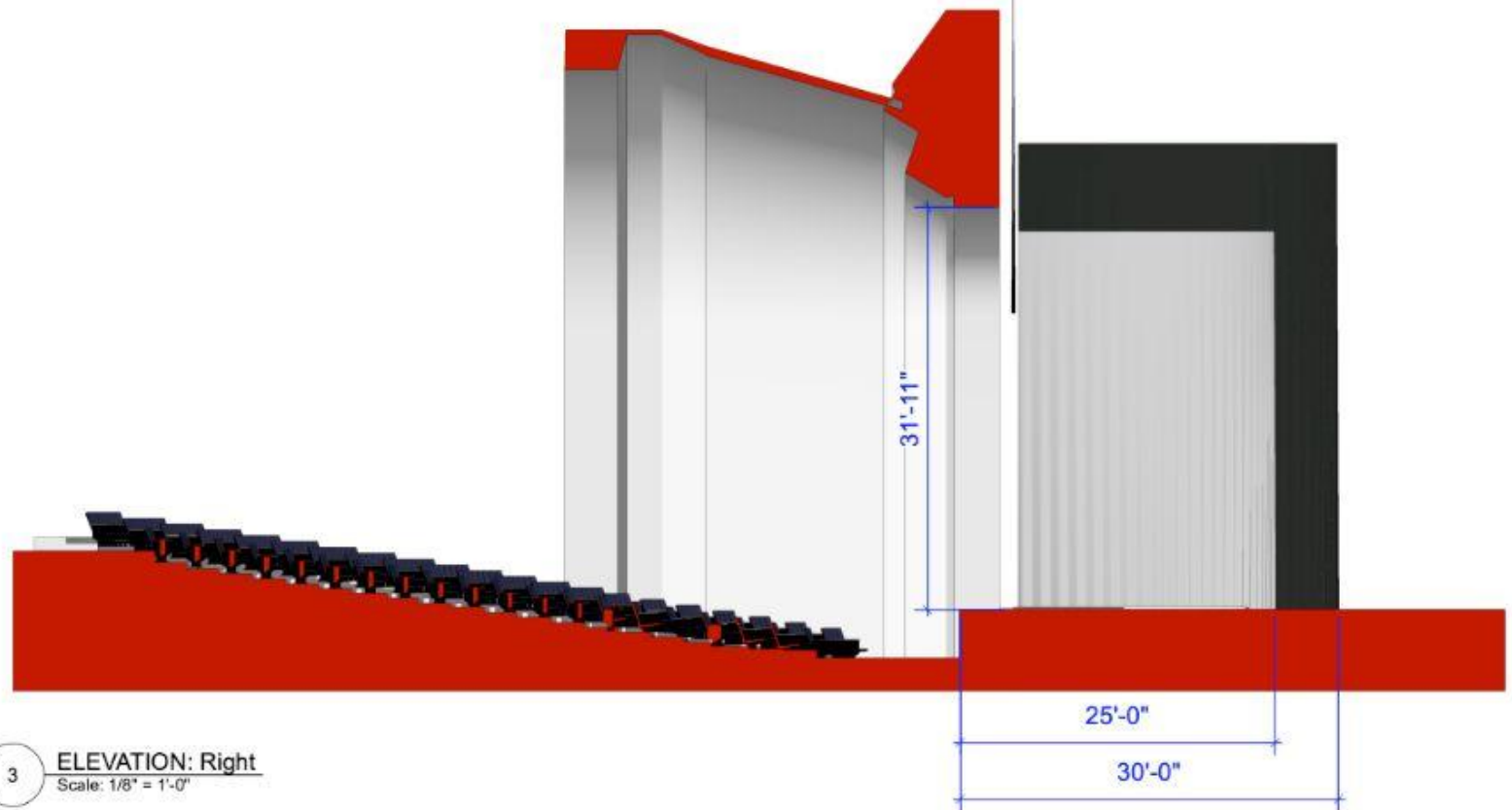
CANDLES
TARGET
FRAGMENT



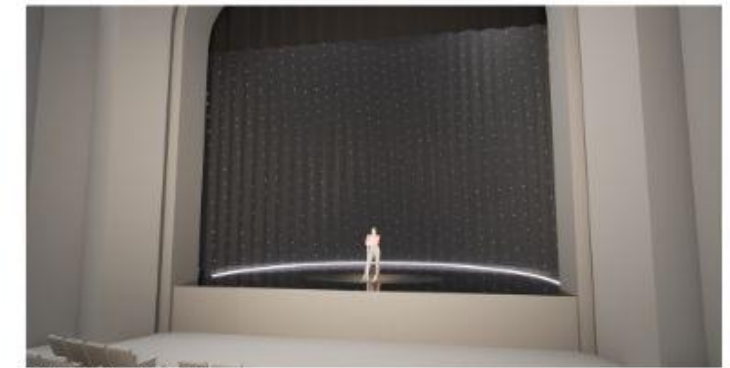
1 PLAN
Scale: 1/8" = 1'-0"



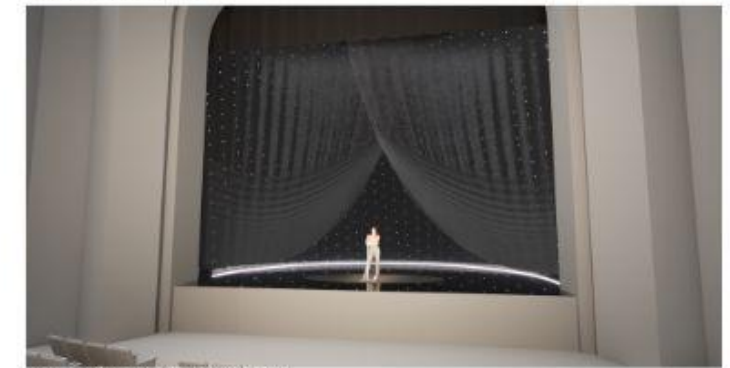
2 ELEVATION: Front
Scale: 1/8" = 1'-0"



3 ELEVATION: Right
Scale: 1/8" = 1'-0"



BRILLIANCE CURTAIN



BRILLIANCE CURTAIN W/SWAG





SWAG INSPIRATION

