

BVLGARI ETERNALLY REBORN

Production designer: Freyja Bardell

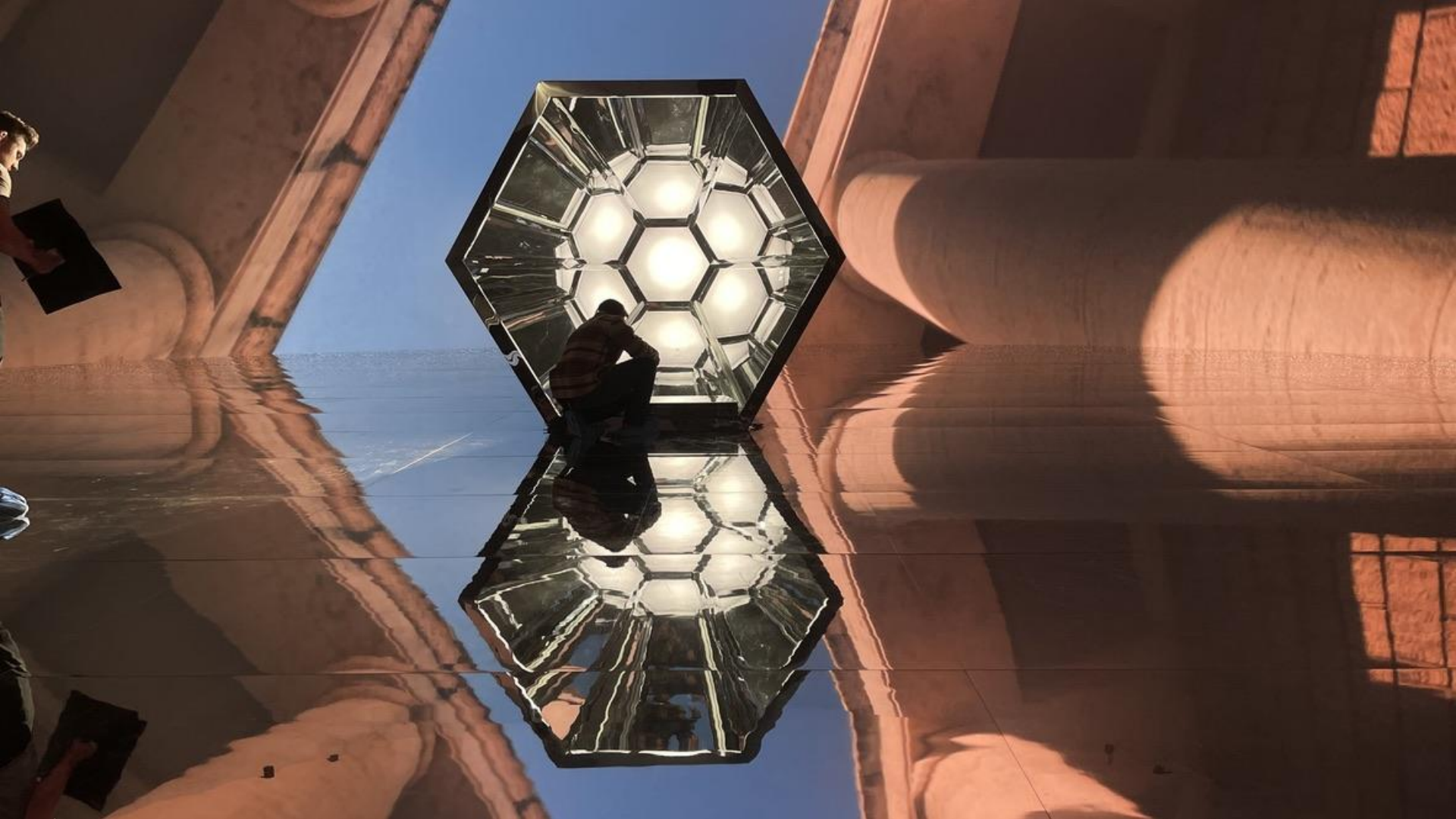
Art Director: Raymundo Enriquez

Set Design: Steve Hardy

Filmed at ILM Stage 23, Los Angeles, CA

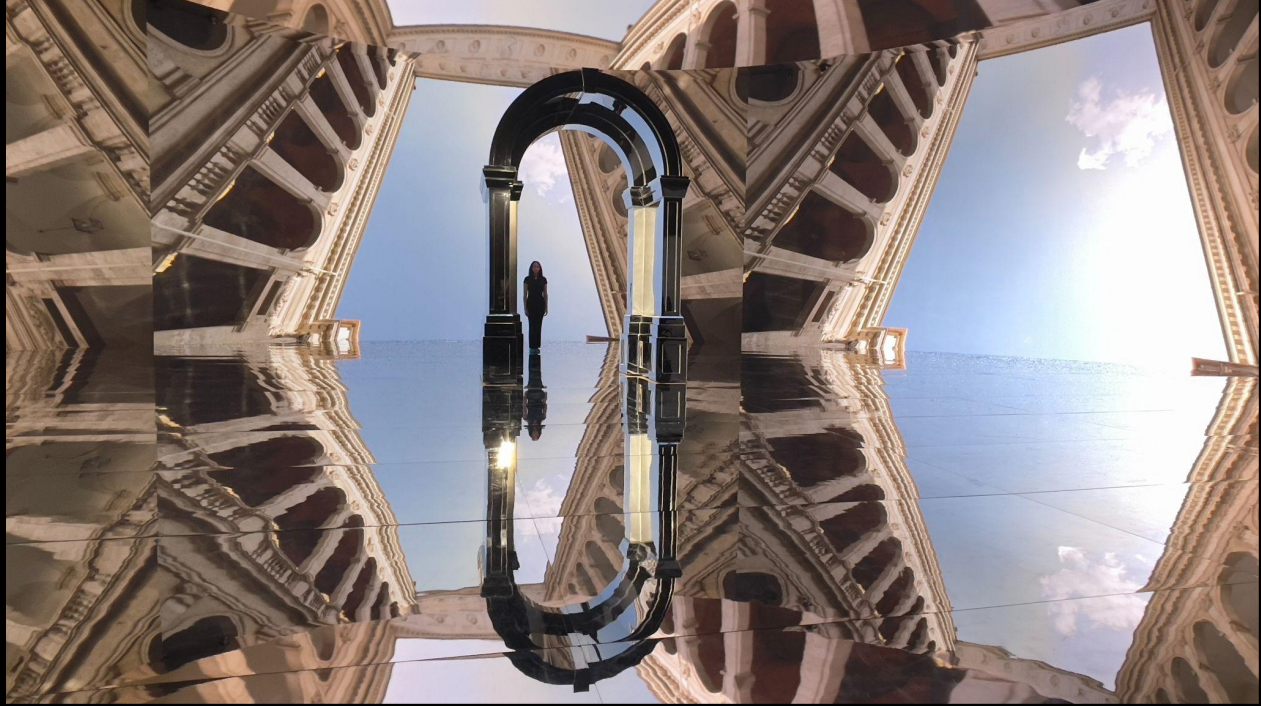




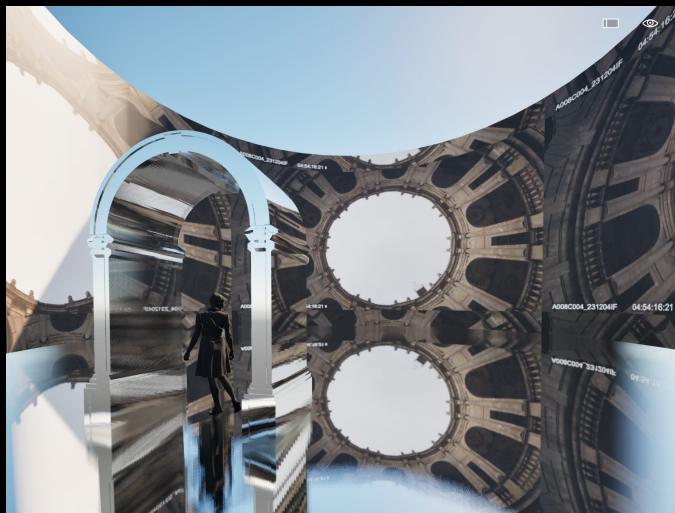


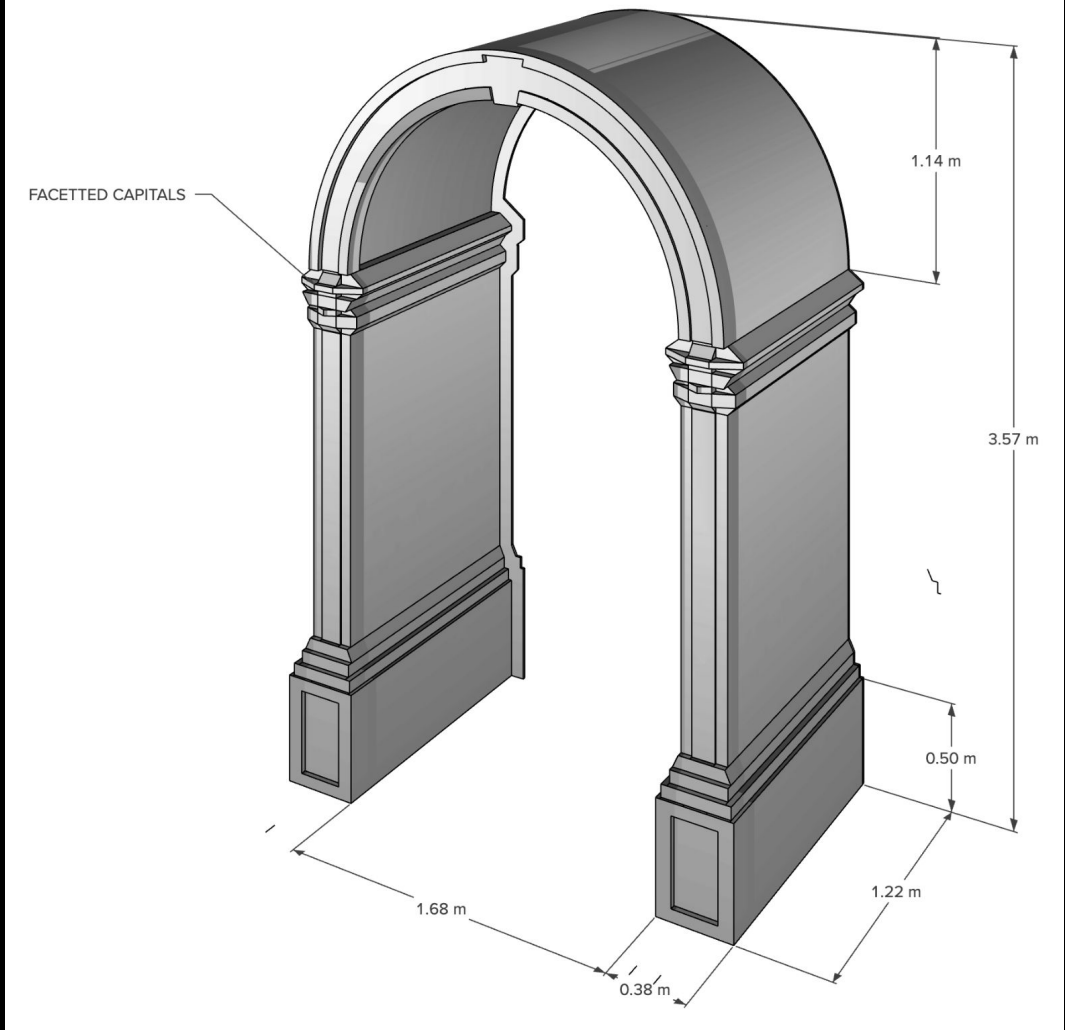


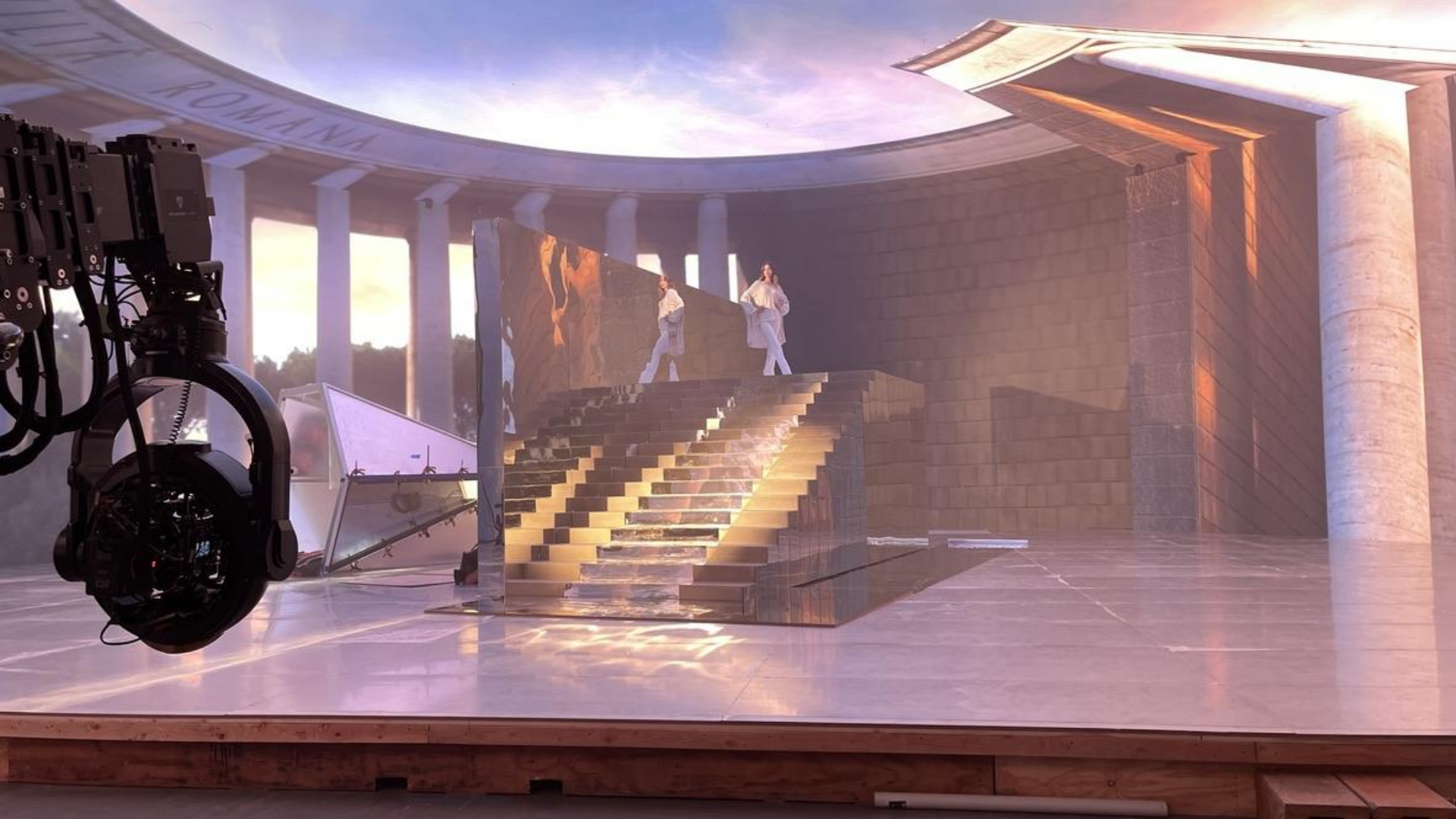








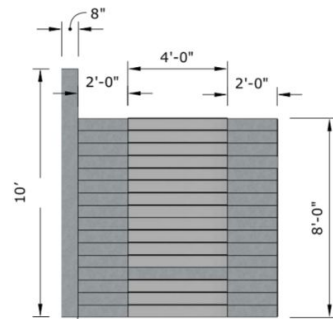
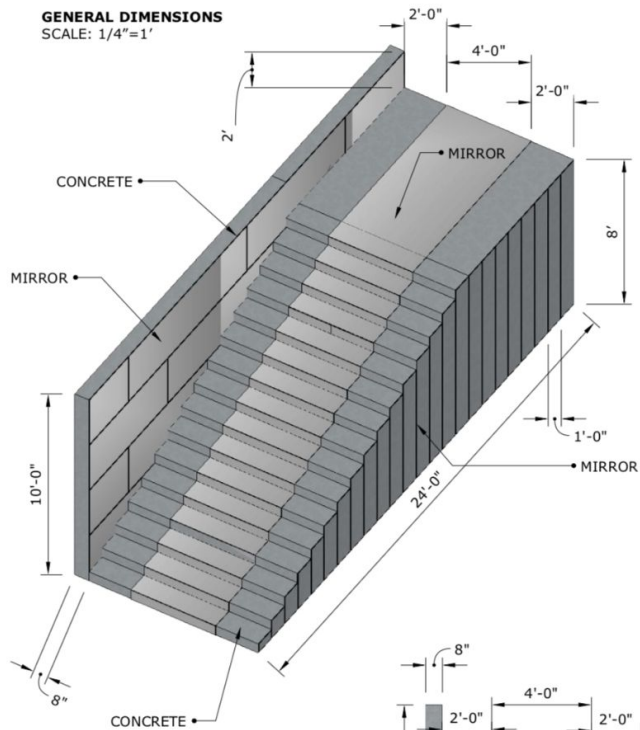






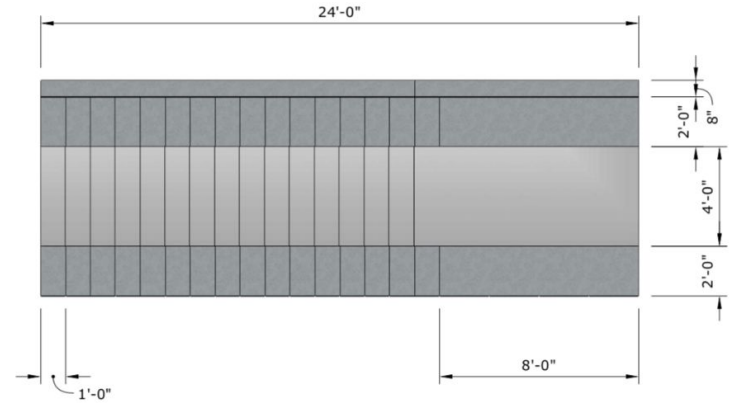


GENERAL DIMENSIONS
SCALE: 1/4"=1'

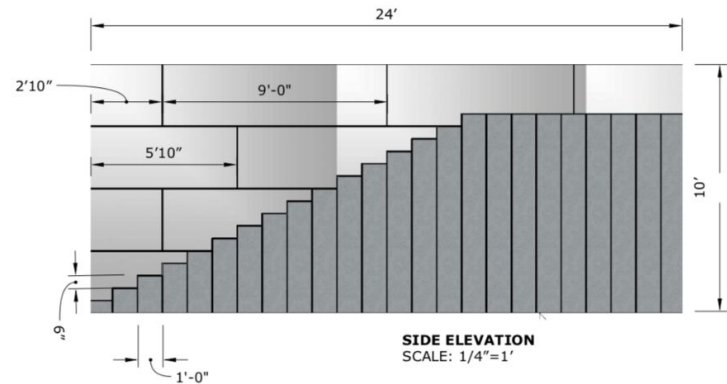


FRONT ELEVATION
SCALE: 1/4"=1'

**BVLGARI SET:
MIRROR STAIRS**



PLAN
SCALE: 1/4"=1'



SIDE ELEVATION
SCALE: 1/4"=1'

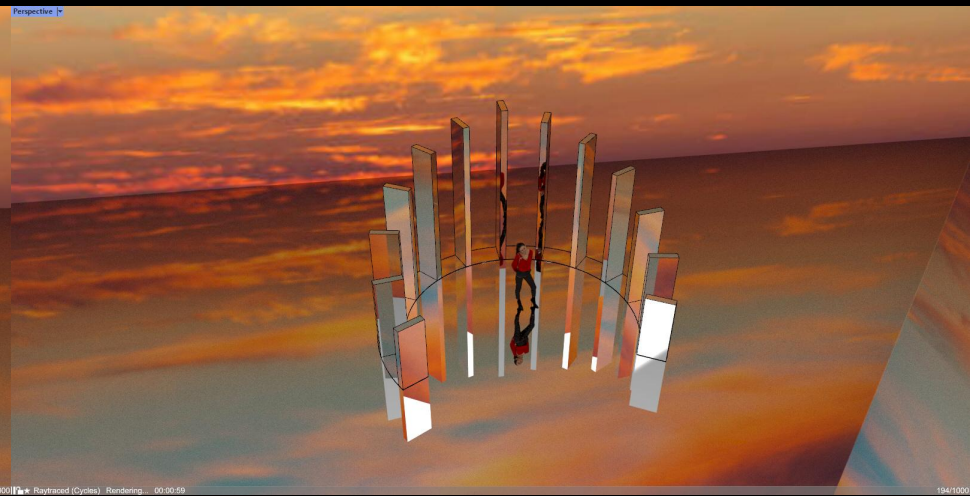
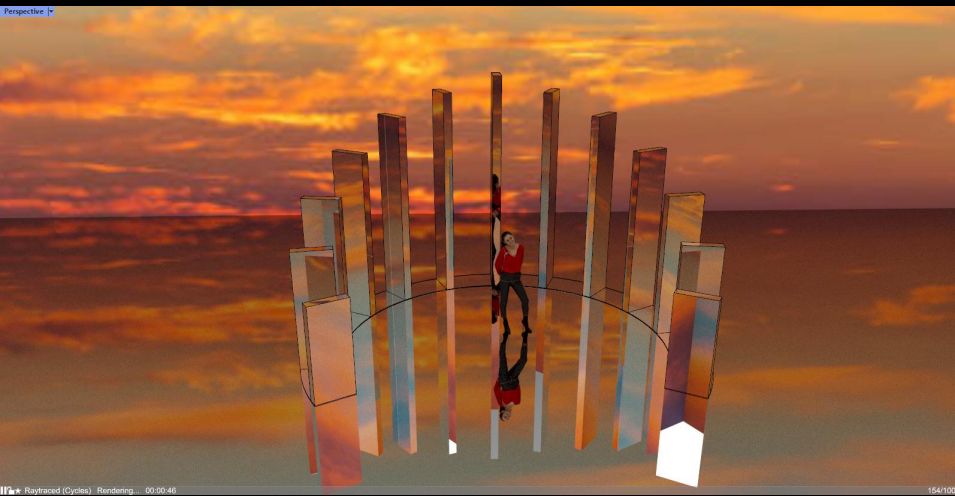
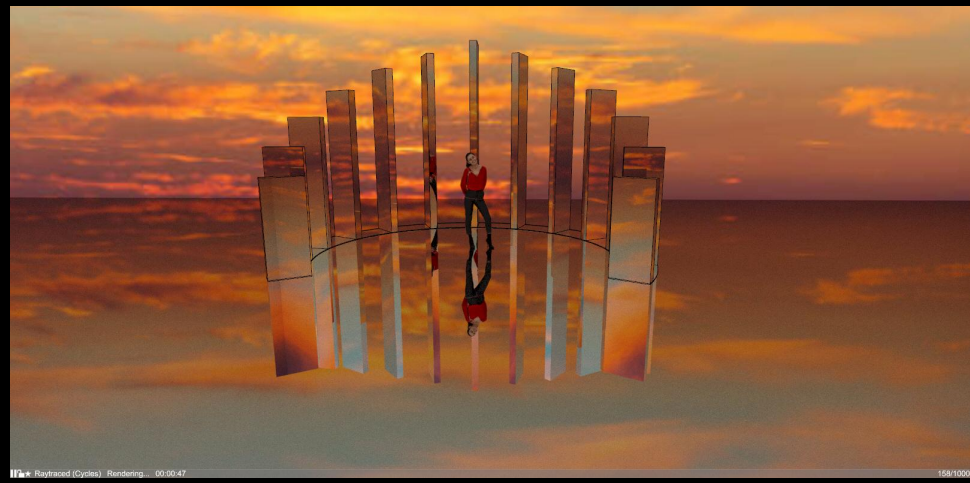
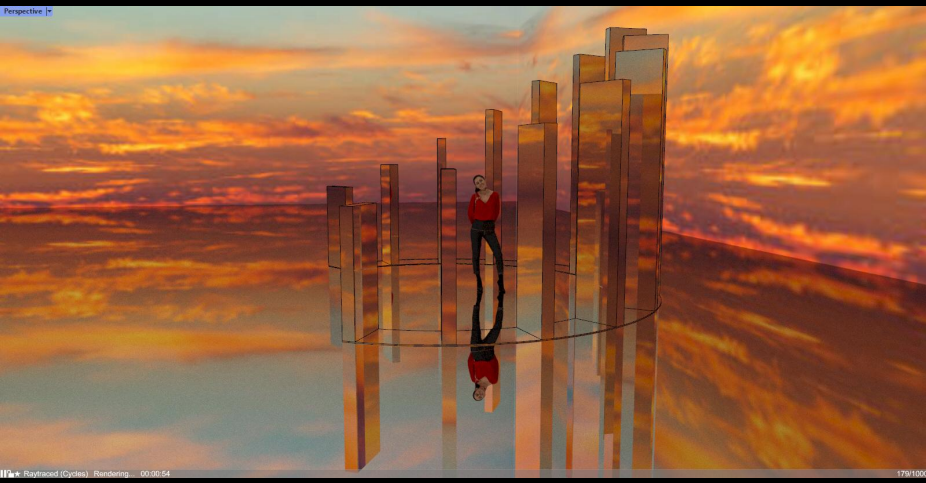










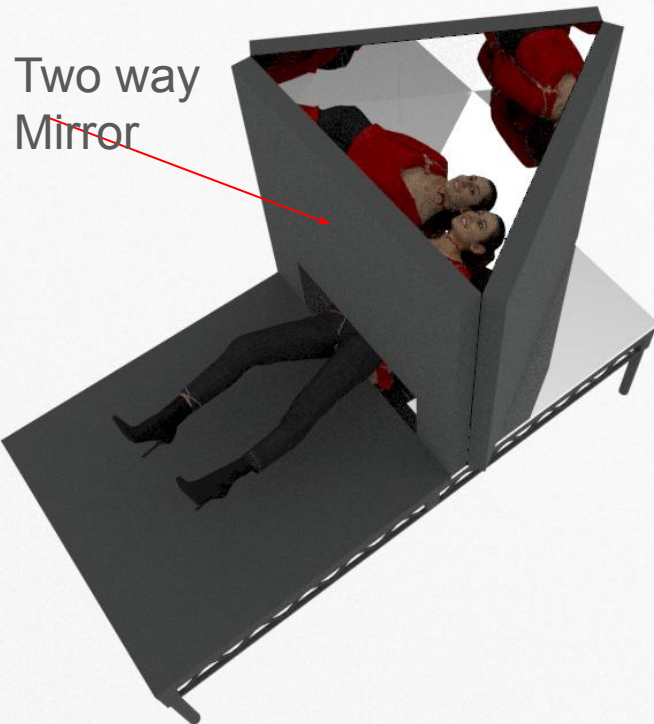




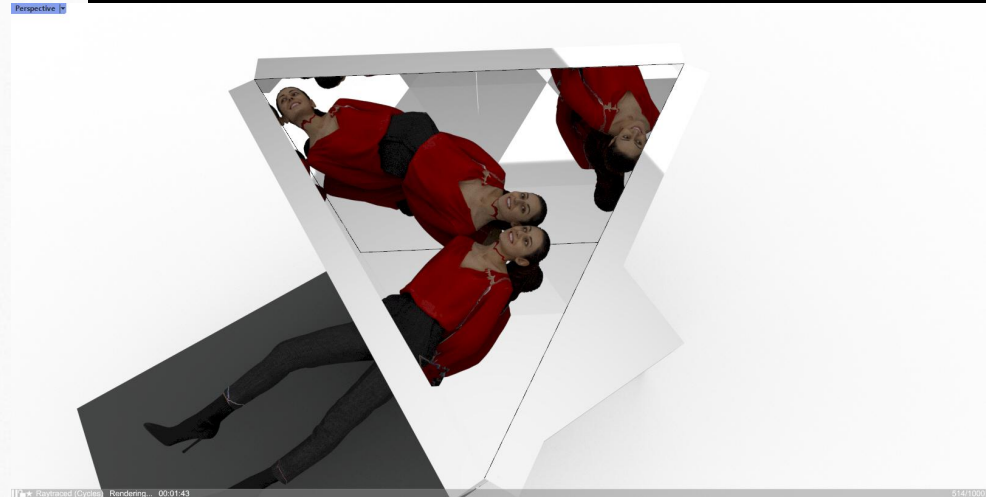
INFINITY MIRROR

Shoot from above through two way mirror.

Cushion steel deck platform the talent.



Perspective



Rendered 00:01:43





PAVLVS QVINTVS PONTIFEX MAXIMVS
AQVAM IN AGRO BRACCIANENSI
SALVERRIMI SE FONTIBVS COLLECTAM
VETERIBVS AQVAE ALIETINAE DVCTIBVS RESTITVTIS
NOVISQVE ADDITIS
XXXIII MILLIARIO DVXIT

ANNO DOMINI
SIFICATVS SVI SEPTIMO

