

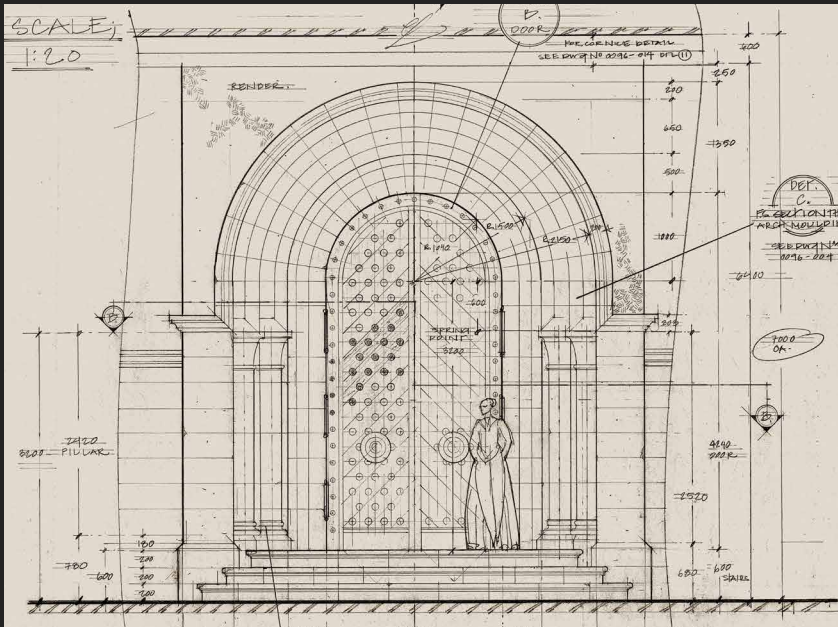


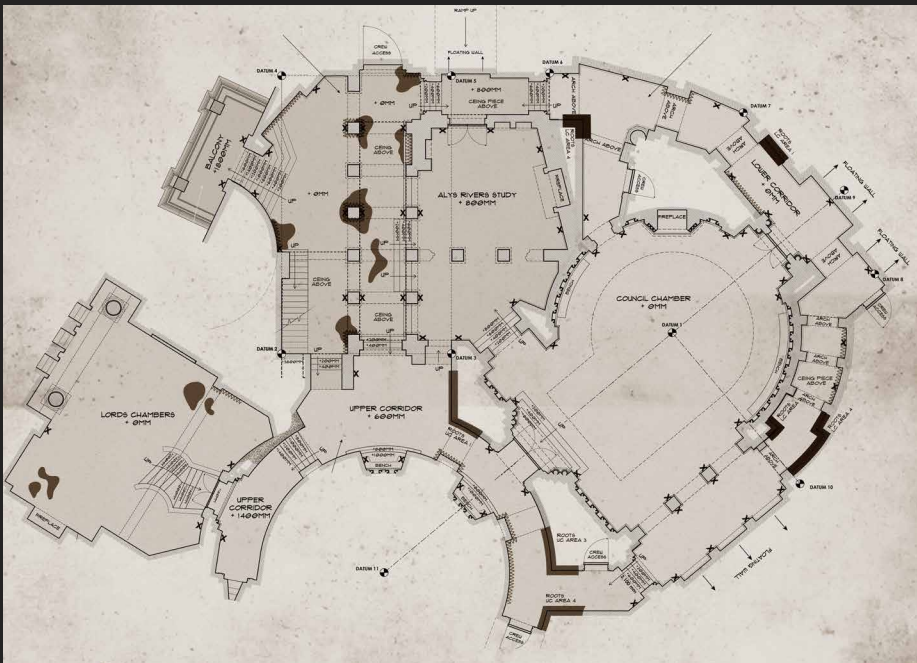
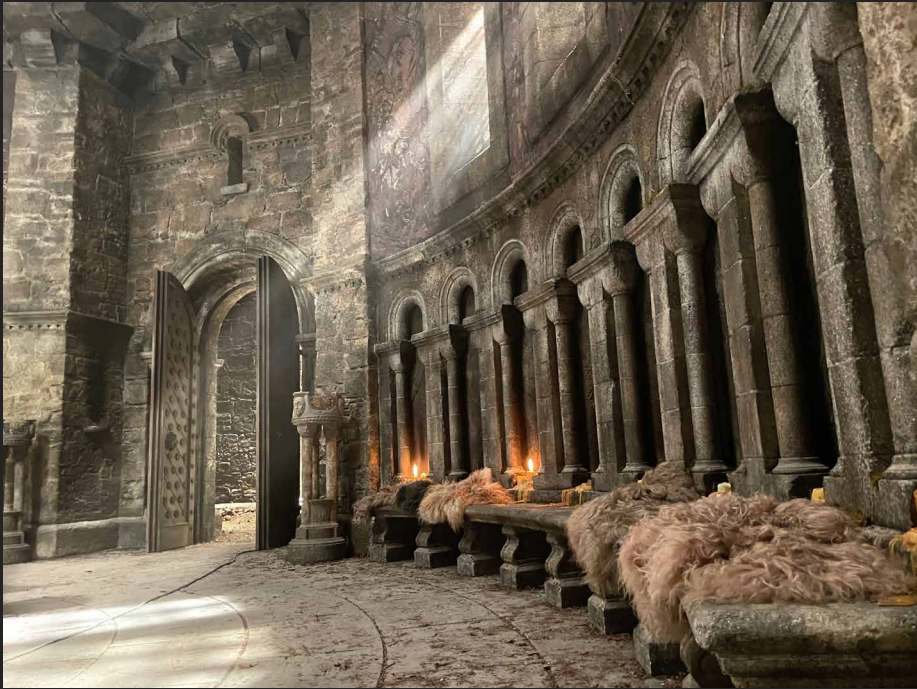
Tim Gray

HOUSE OF THE DRAGON

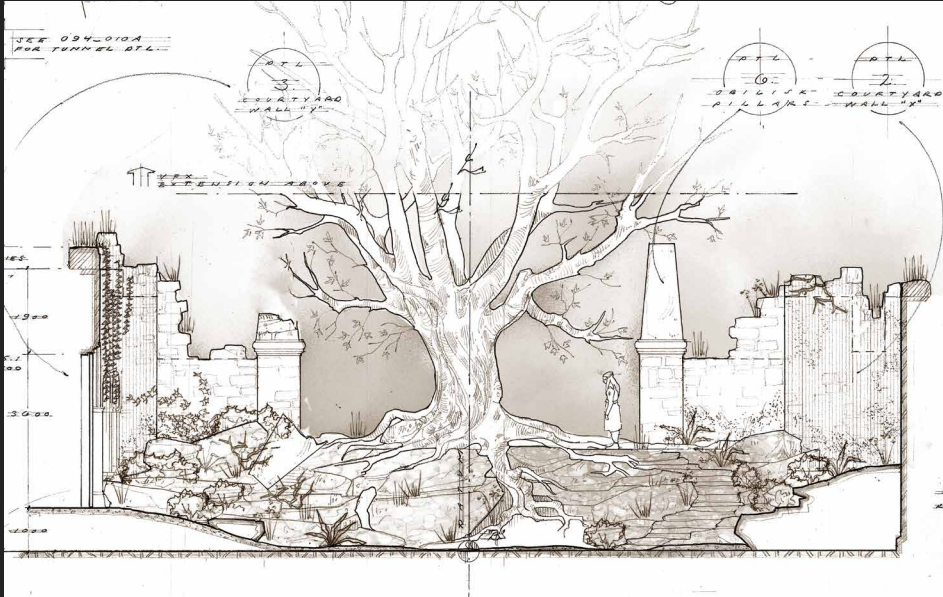
In an imagined world where myth, mystery, family, feuding and dragons merge, the design aim is to create a monumental world with its foundation just in reality, but a domain which creates a psychological climate for the dark narrative.

HARRENHAL - COUNCIL CHAMBER

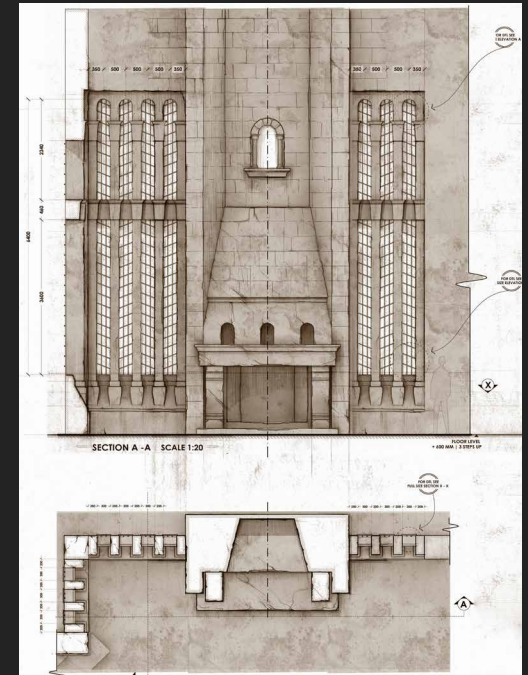




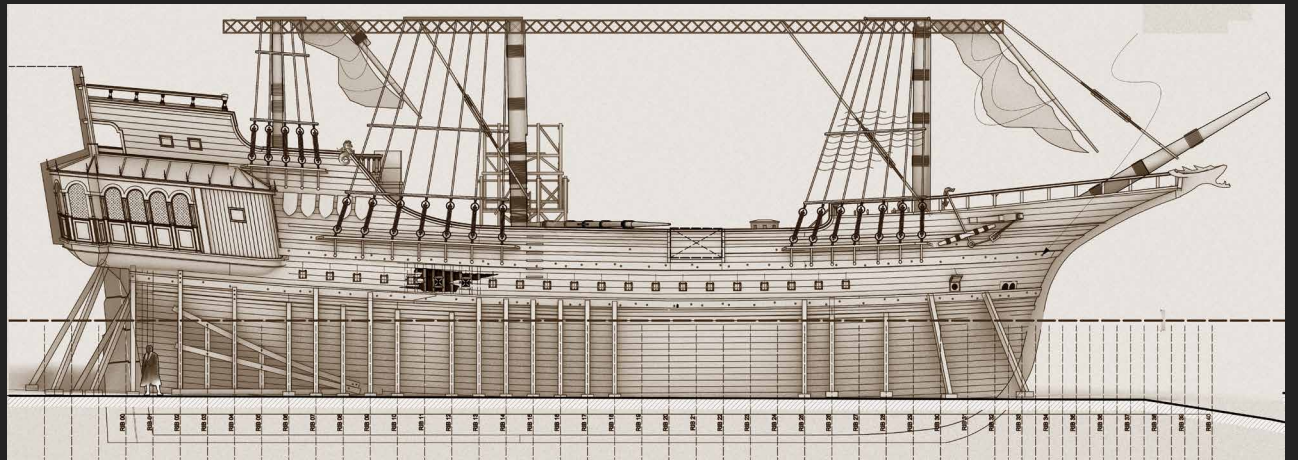
HARRENHAL - GODSWOOD



DRAGONSTONE



EXT DRIFTMARK - DRY DOCK



KINGS LANDING - STREETS



