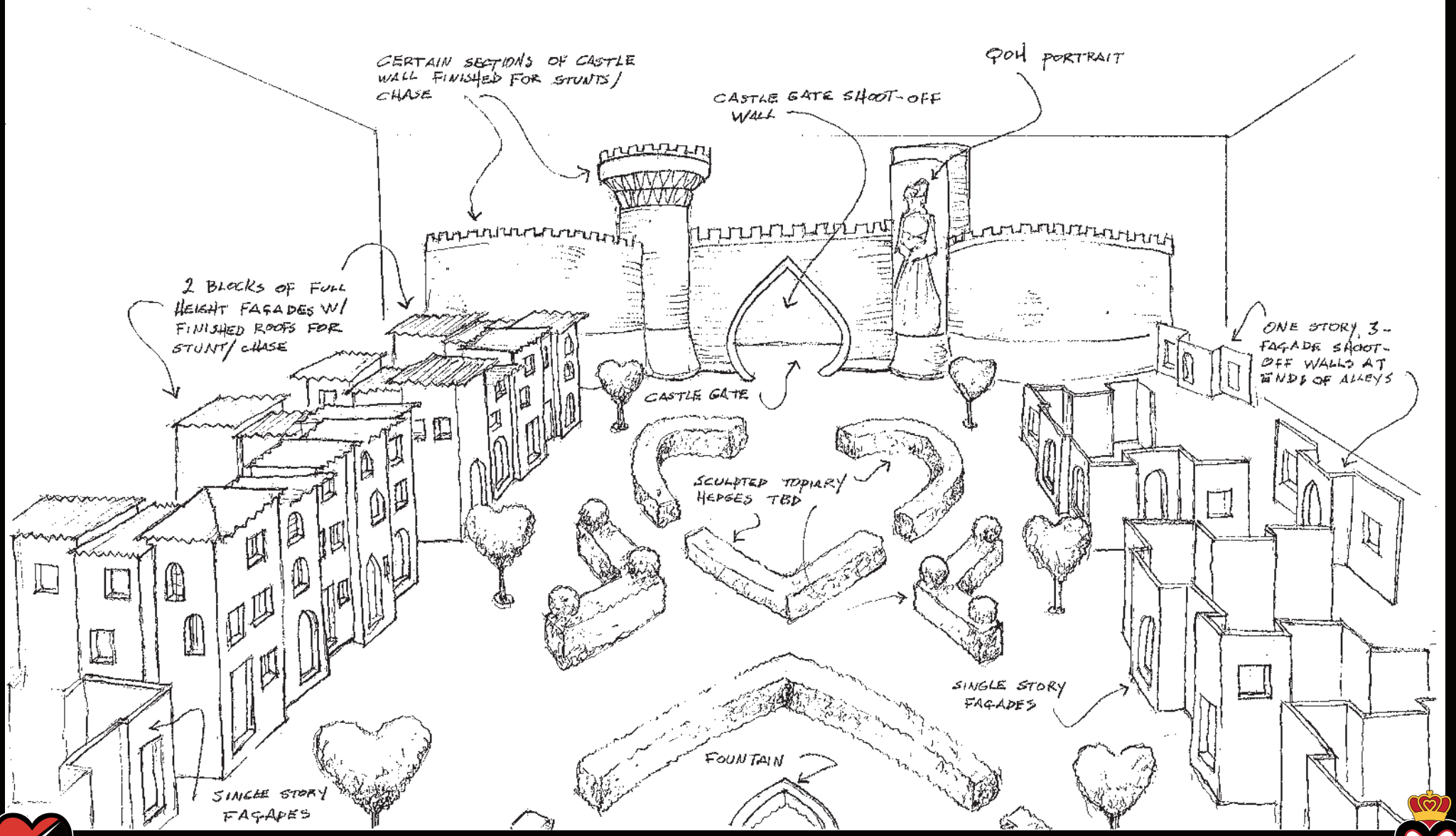


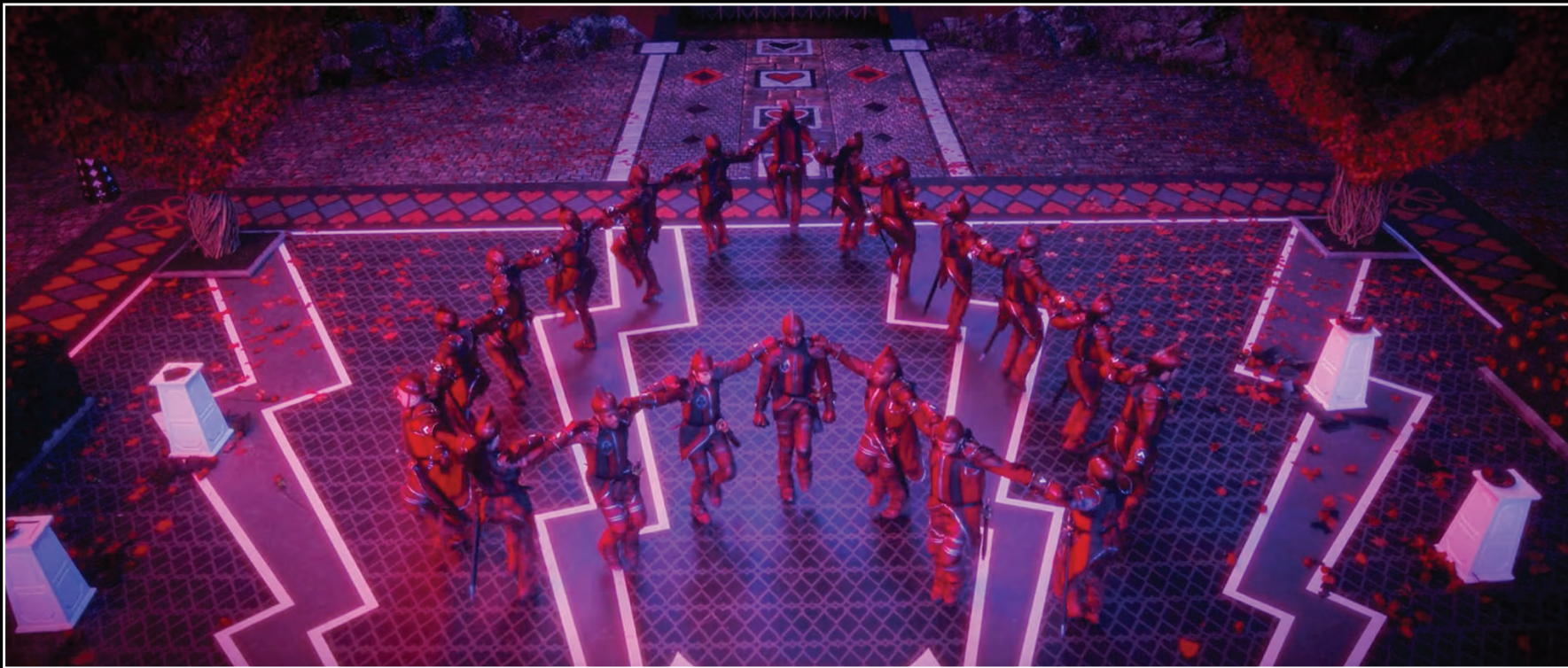


Disney  
DESCENDANTS  
THE RISE  OF RED

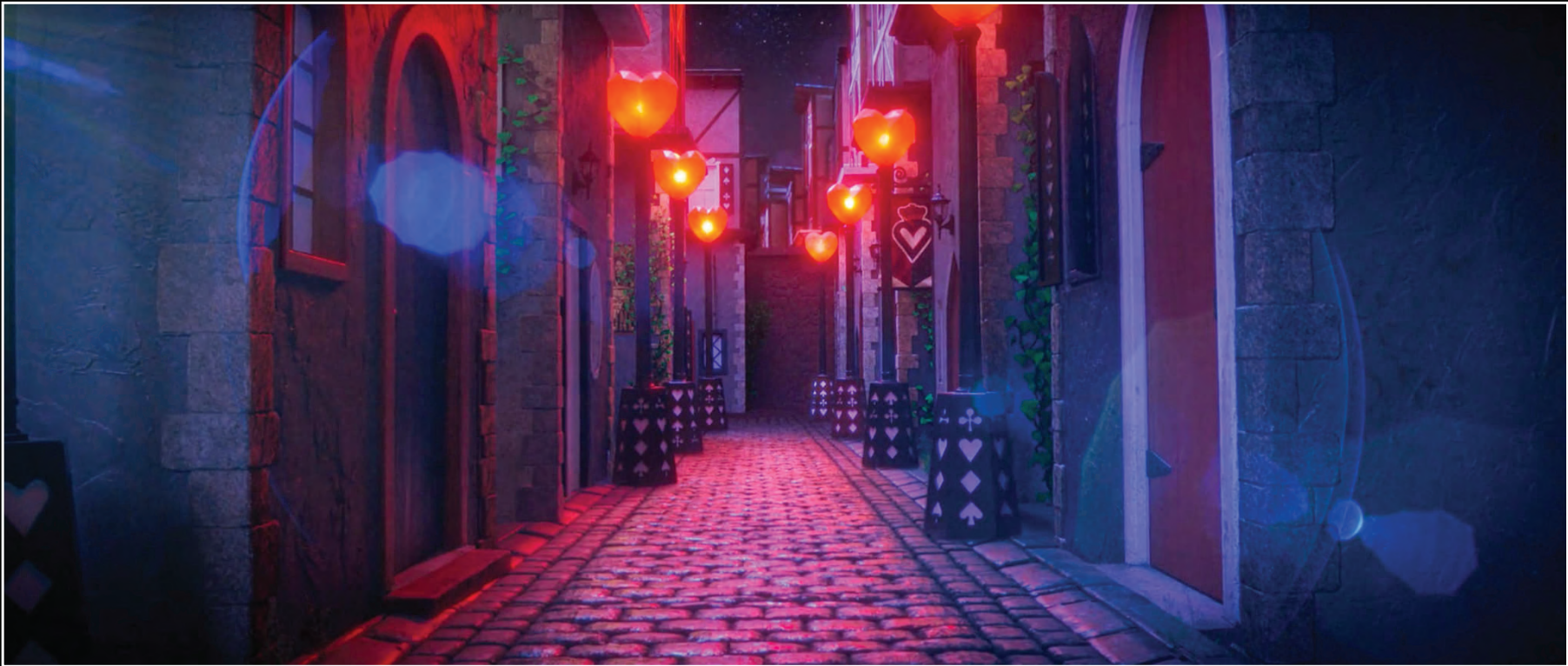
PRODUCTION DESIGNER MARK HOFELING

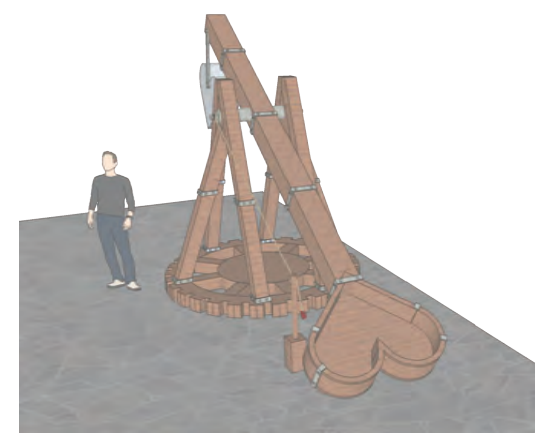
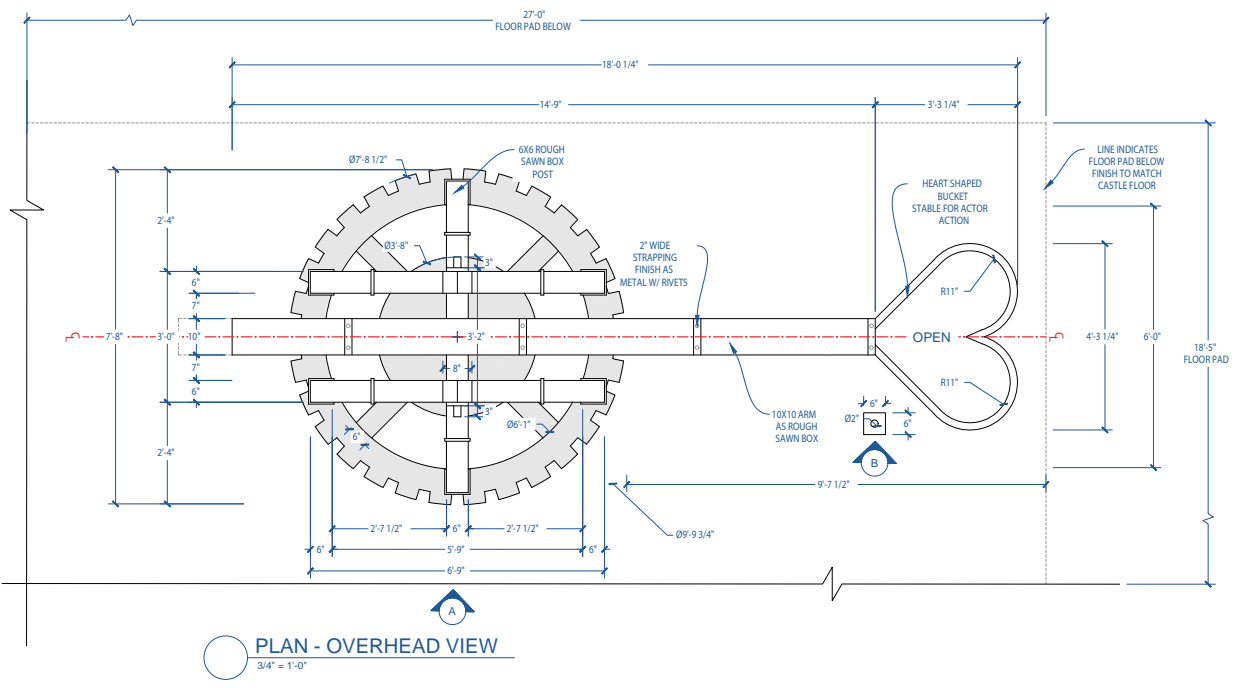
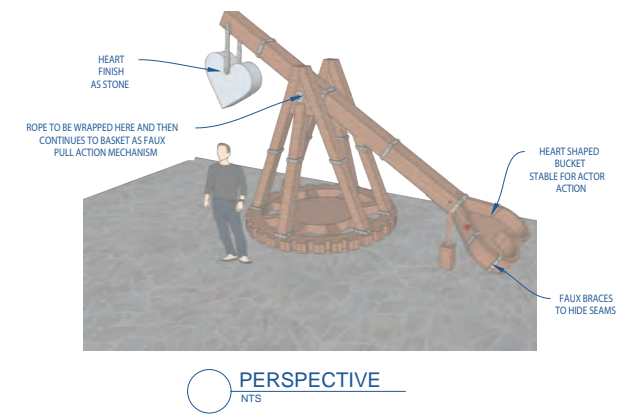
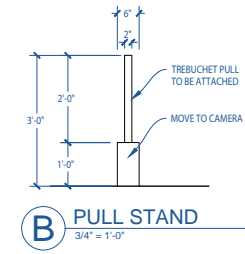
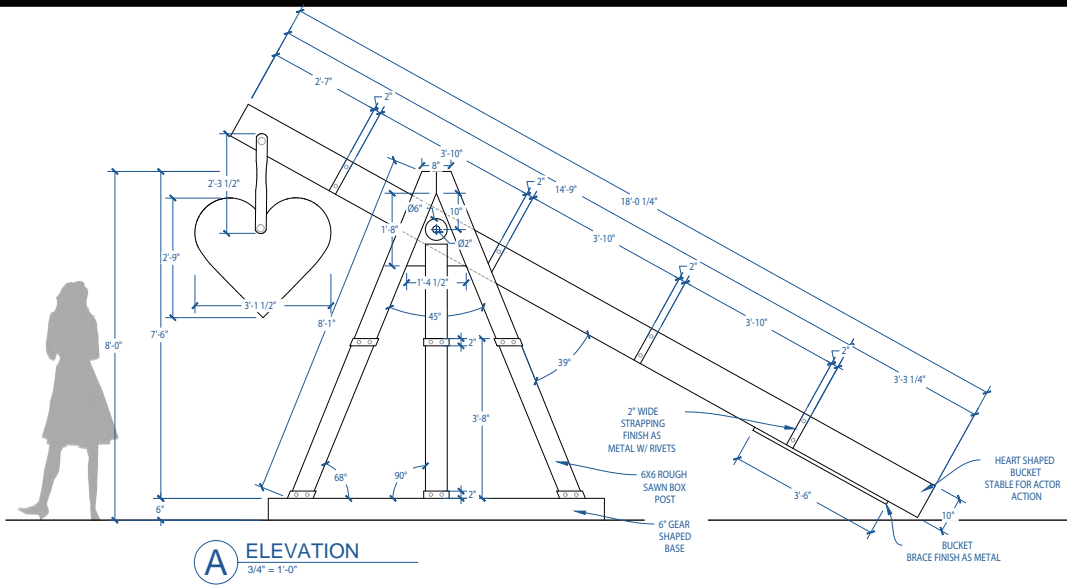


# WONDERLAND PLAZA









**RELEASED**

01/04/2023  
@ 11:00AM

NOTE:

TREBUCHET DOES NOT WORK

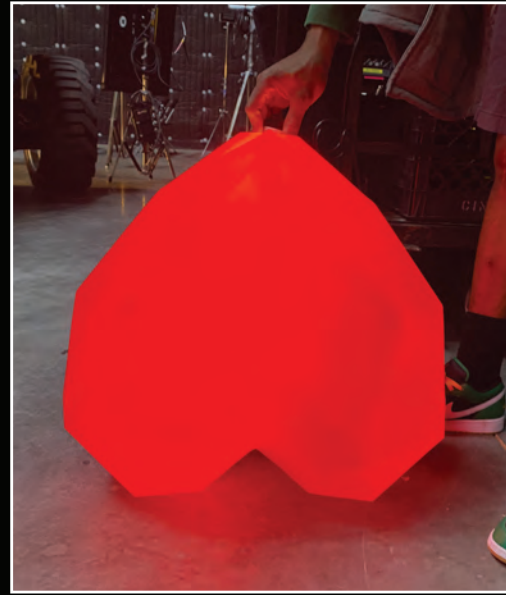
BUILT AS ROUGH SAWN BOX LUMBER W/ METAL STRAPPING

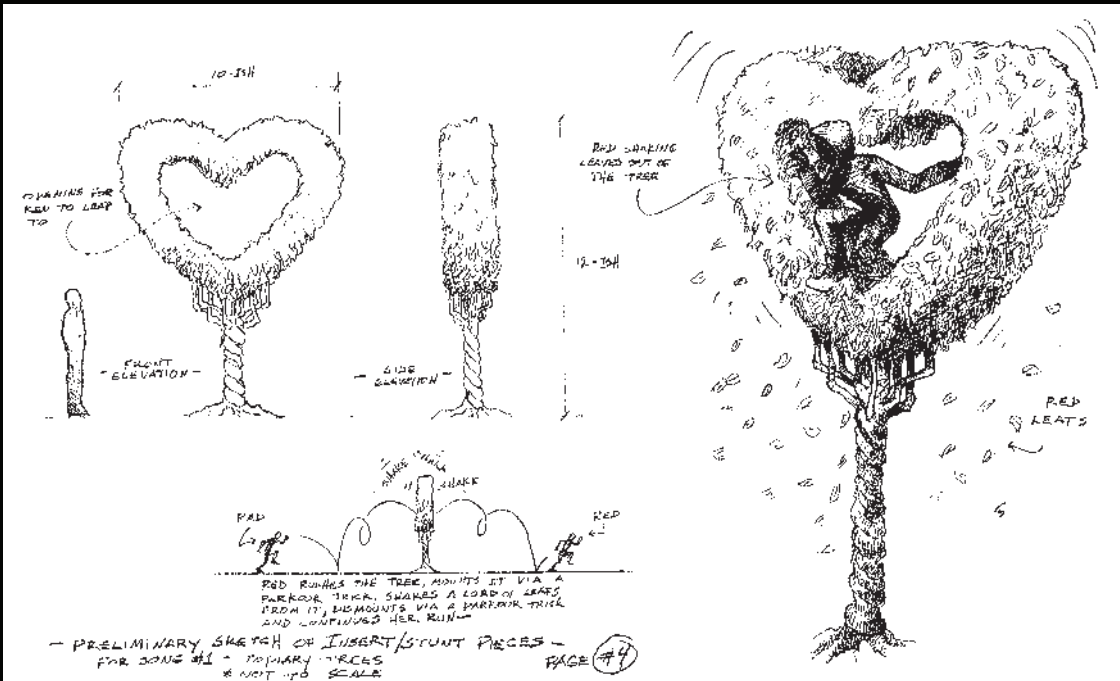
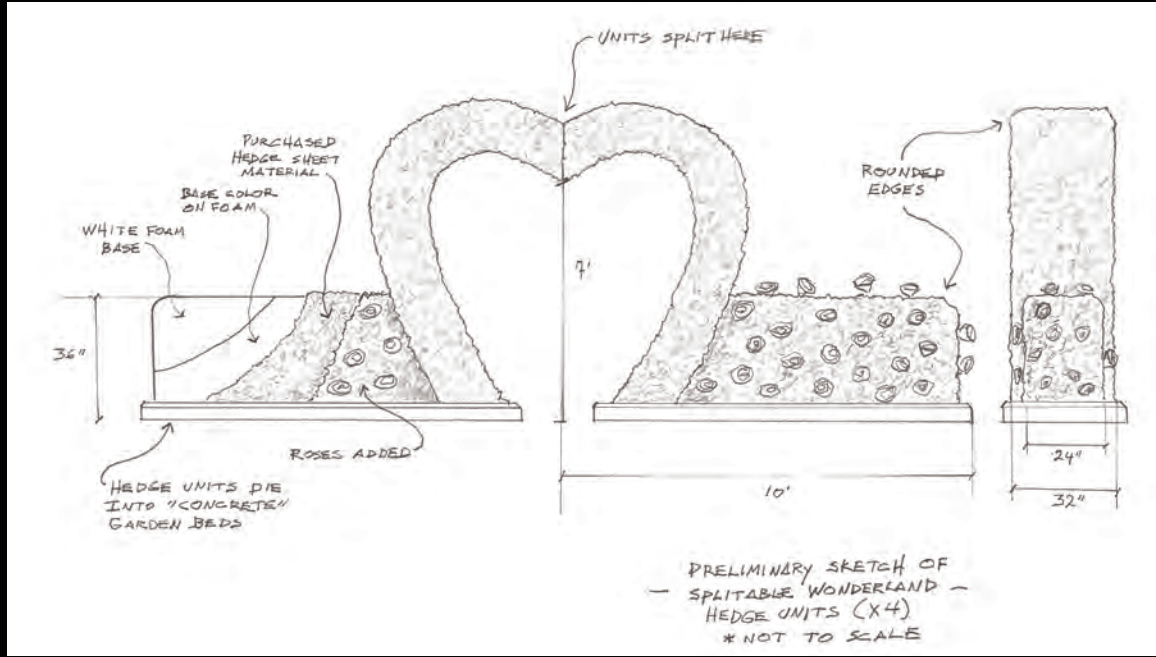
TREBUCHET TO BE BUILT ON CASTERS

BUILD BOLSTER TO STABILIZE BASKET FOR ACTOR ACTION

EXT. WONDERLAND PLAZA - TREBUCHET

<b>POCKETWATCH</b>		DIRECTOR: JENNIFER PHANG EXECUTIVE PRODUCER: SUZANNE TODD PRODUCTION DESIGNER: MARK HOFELING ART DIRECTOR: HUNTER BROWN CONSTRUCTION COORDINATOR: NASH SET DECORATOR: DEVITA WALKER	
SET NAME: EXT. WONDERLAND PLAZA	SHEET TITLE: TREBUCHET		SHEET NO: 13
STAGE/LOC: STAGE 5	SCALE: 3/4" = 1'-0"	DRAWN BY: M. GEORGE	SET NO: 103
FILE NAME: 103_13_EXT WONDERLAND PLAZA_230104_CAIAPULL_MC_REL			
APPROVALS			
PRODUCTION DESIGNER	ART DIRECTOR	CONSTRUCTION COORDINATOR	SET DECORATOR









**FRONT ELEVATION**  
SCALE 1/4" = 1'-0"

**SECTION**  
SCALE 1/4" = 1'-0"

**TOP VIEW**  
SCALE 1/4" = 1'-0"

**SEAT SECTION**  
SCALE 1/4" = 1'-0"

**BACK SUPPORT SECTION**  
SCALE 1/4" = 1'-0"

**SEAT TOP VIEW**  
SCALE 1/4" = 1'-0"

**BACK SUPPORT TOP VIEW**  
SCALE 1/4" = 1'-0"

**PERSPECTIVE**  
SCALE NOT TO SCALE

**PERSPECTIVE**  
SCALE NOT TO SCALE

**PERSPECTIVE**  
SCALE NOT TO SCALE

**PERSPECTIVE**  
SCALE NOT TO SCALE

**NOTE:** THIS IS A REPRESENTATION PLEASE DISCUSS WITH SET DECORATOR WITH EXACT DESIGN OF BRAIDED ORNAMENTATION

**NOTE:** THIS CHAIR WILL BE LIFTED BY FOUR ACTORS WITH AN ACTOR IN THE SEAT. MUST NOT EXCEED OVERALL WEIGHT LIMITS WITH ACTOR SITTING. SEE AD FOR DETAILS

**RELEASED**  
01/18/2023  
2:00PM

POCKET WATCH		DIRECTOR: JAMMER PHANG
EXECUTIVE PRODUCER: SUZANNE TOOD		PRODUCTION DESIGNER: SUZANNE TOOD
PRODUCTION DESIGNER: SUZANNE TOOD		ART DIRECTOR: WALTER ANDERSON
PRODUCTION DESIGNER: SUZANNE TOOD		PRODUCTION DESIGNER: SUZANNE TOOD
PRODUCTION DESIGNER: SUZANNE TOOD		BY DECORATOR: DEVITA WALKER
DATE: 01/18/2023	TIME: 2:00PM	01

RED VELVET FIELD W/ GOLD LIGHTNING BOLTS

BLACK VELVET FIELD W/ GOLD LIGHTNING BOLTS

RED VELVET FRAME W/ HUGE RED RUBIES

RED GLASS BALLS FOR HAND GRASPS AND FEET

LIFTING HOOKS

BENDABLE, RUBBER THRU VINES STIFFENED AND FINISHED AS GOLD W/ GOLD ROSES

RED VELVET FRAME W/ HUGE BLACK GEMS

REAR LIFTING HOOK

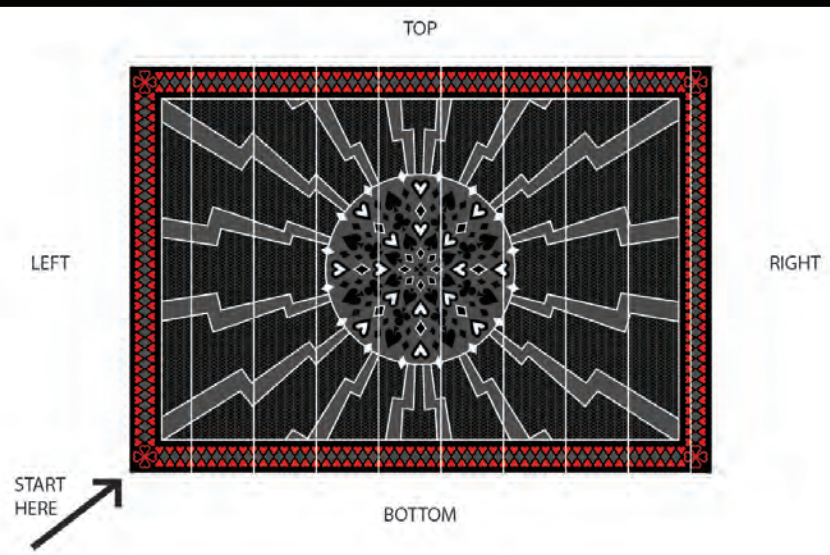
RED GLASS BALLS FOR HAND GRASPS AND FEET

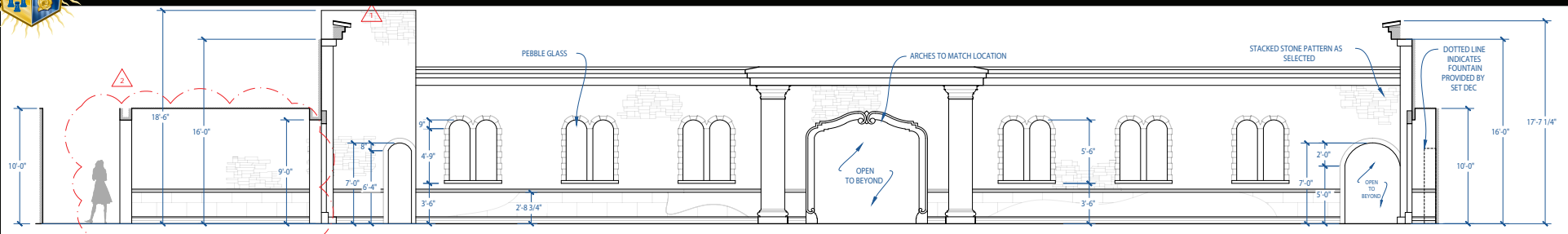
HALF BLACK, HALF RED VELVET SEAT CUSHION W/ GOLD METALLIC PIPING

TWISTED VINE ARMS & LEGS

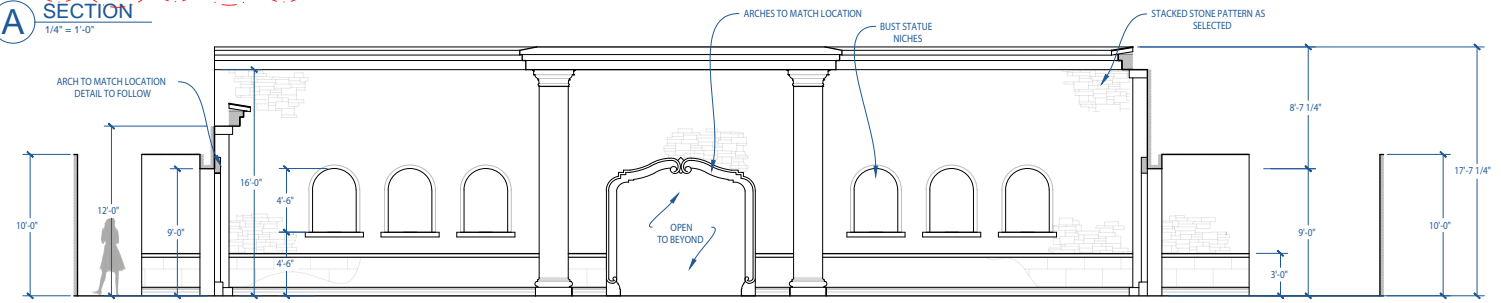
PRELIMINARY SKETCH OF QOH THRONE  
VERSION #2  
\* NOT TO SCALE



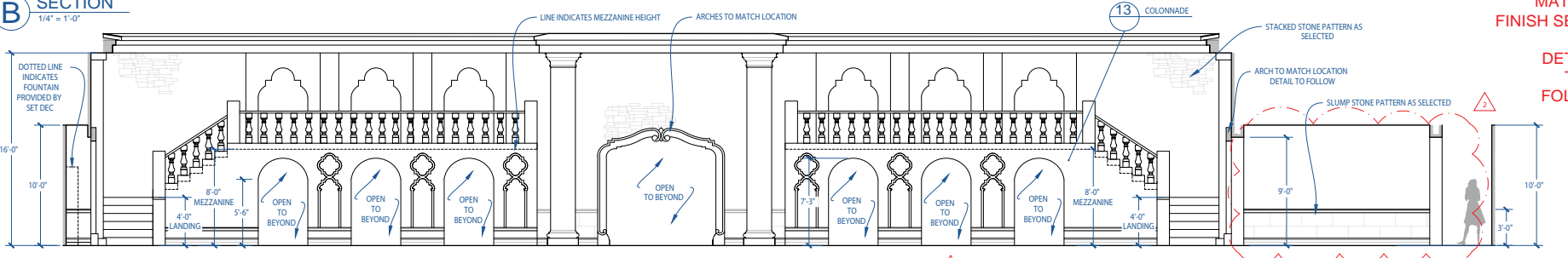




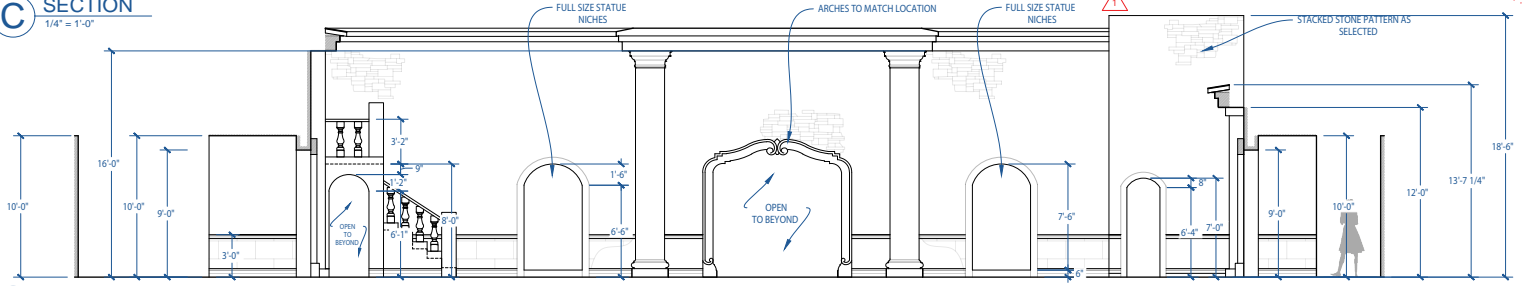
**A SECTION**  
1/4" = 1'-0"



**B SECTION**  
1/4" = 1'-0"



**C SECTION**  
1/4" = 1'-0"



**D SECTION**  
1/4" = 1'-0"

**REVISED**  
12/06/2022  
@ 1:00PM

- ⚠ TOWER HEIGHT ADJUSTED FOR VFX
- ⚠ EXTEND HALLWAY AS SHOWN. MOVE DOUBLE SIDED ARCHWAY TO NEW HALL

**NOTE:**  
SEE PD OR AD FOR MATERIAL FINISH SELECTIONS

**DETAILS TO FOLLOW**

<b>POCKETWATCH</b>		DIRECTOR: JENNIFER PHANG EXECUTIVE PRODUCER: SUZANNE TODD PRODUCTION DESIGNER: MARK HOFELING ART DIRECTOR: HUNTER BROWN CONSTRUCTION COORDINATOR: DAVE NASH SET DECORATOR: DEVITA WALKER	
SHEET NAME: EXT. AURADON PREP QUAD	SHEET TITLE: SECTIONS	SCALE: 1/4"	DRAWN BY: M. GEORGE
STAGE/LOC:			
FILE NAME: 115_116_03_SET_INT_AURADONQUAD_23206_SECTIONS_MG_REV	SET NO: 115_116	<b>03</b>	
PRODUCER:	DIRECTOR:	ART DIRECTOR:	PRODUCTION DESIGNER:

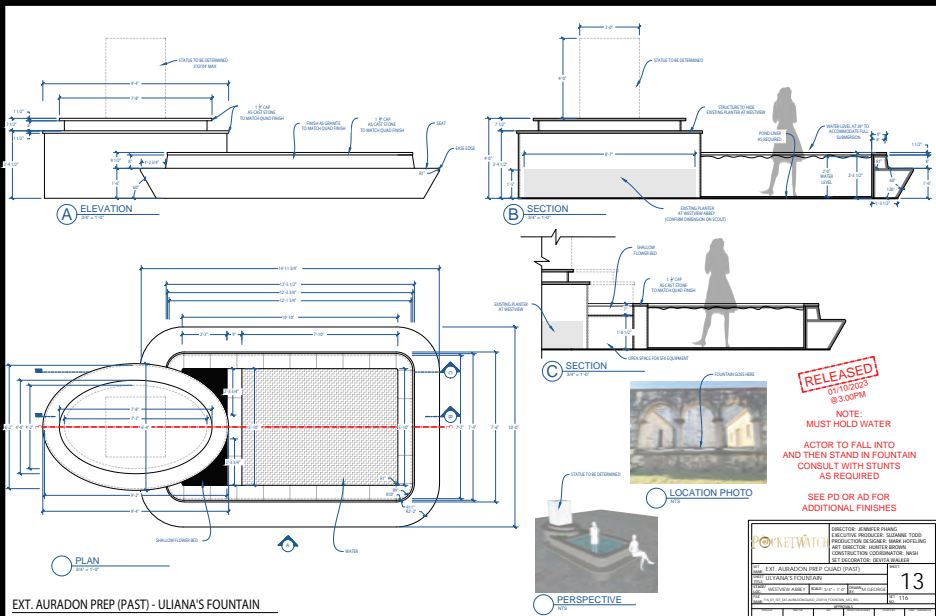


**EXT. AURADON PREP QUAD - SECTIONS**

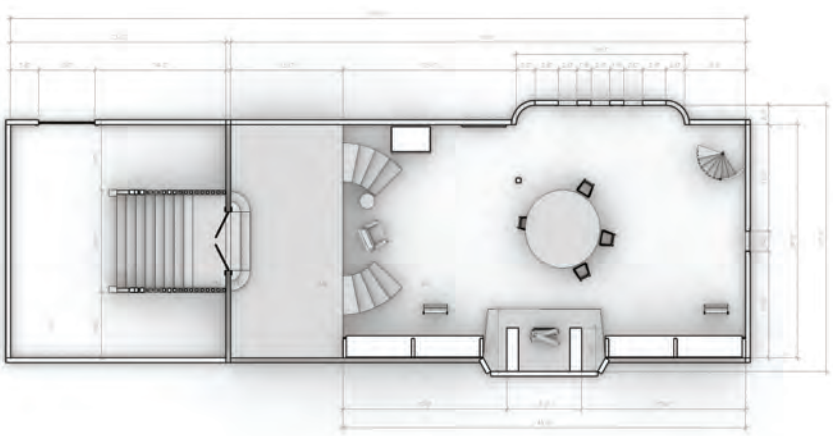
**AURADON PREP QUAD**



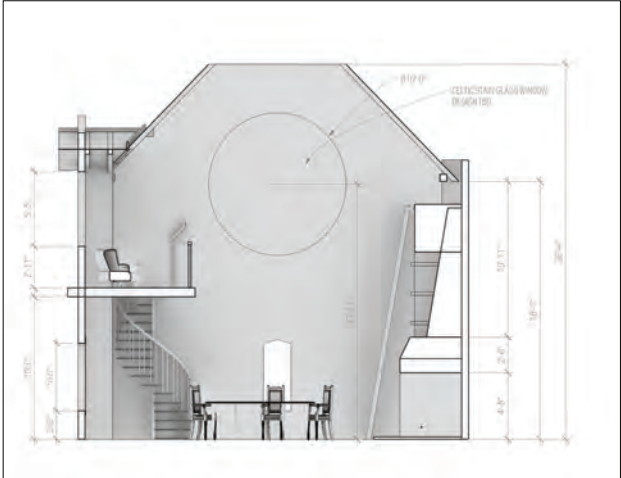
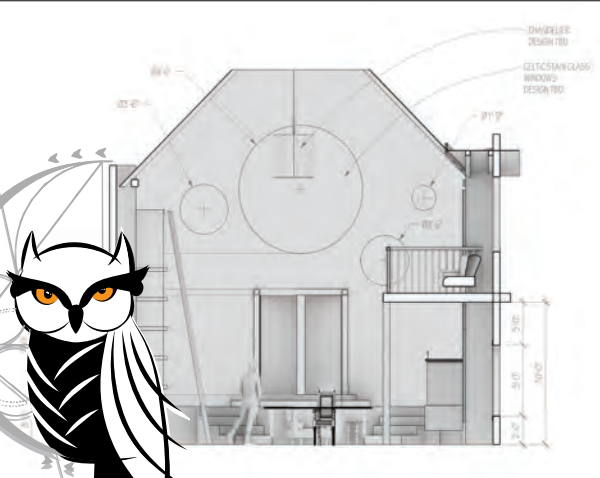
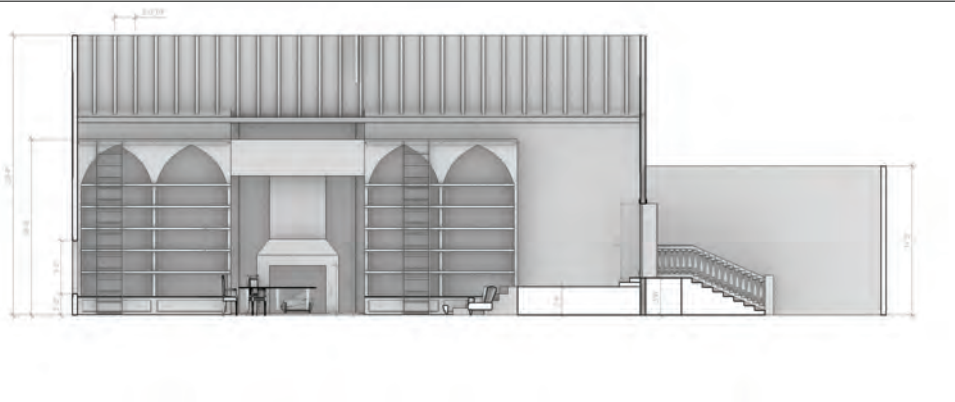
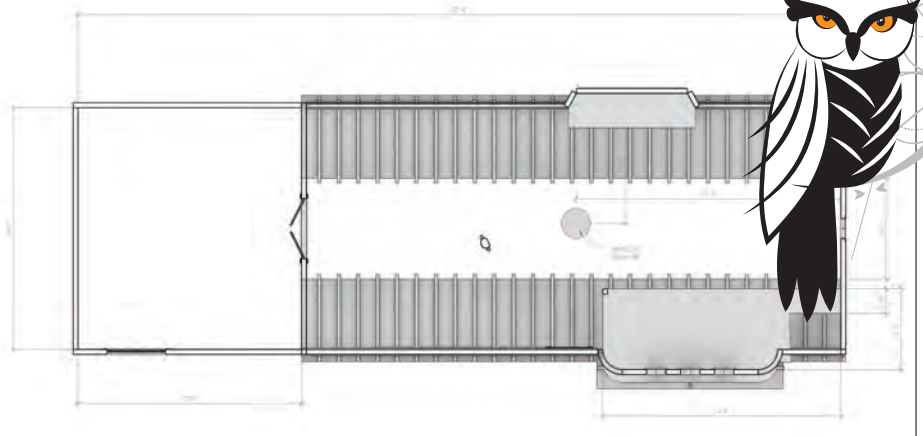








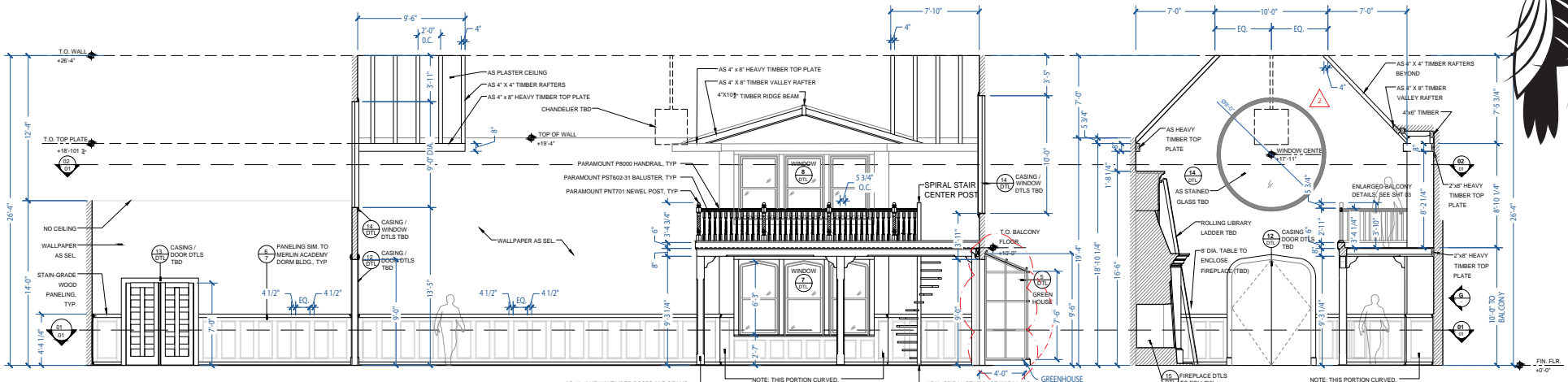
**HEADMASTER  
REDESIGN  
FOR BUDGETING  
11/29/22  
COMBINE  
SETS: 108  
120  
134**



# HEADMASTER/ MERLIN'S OFFICE





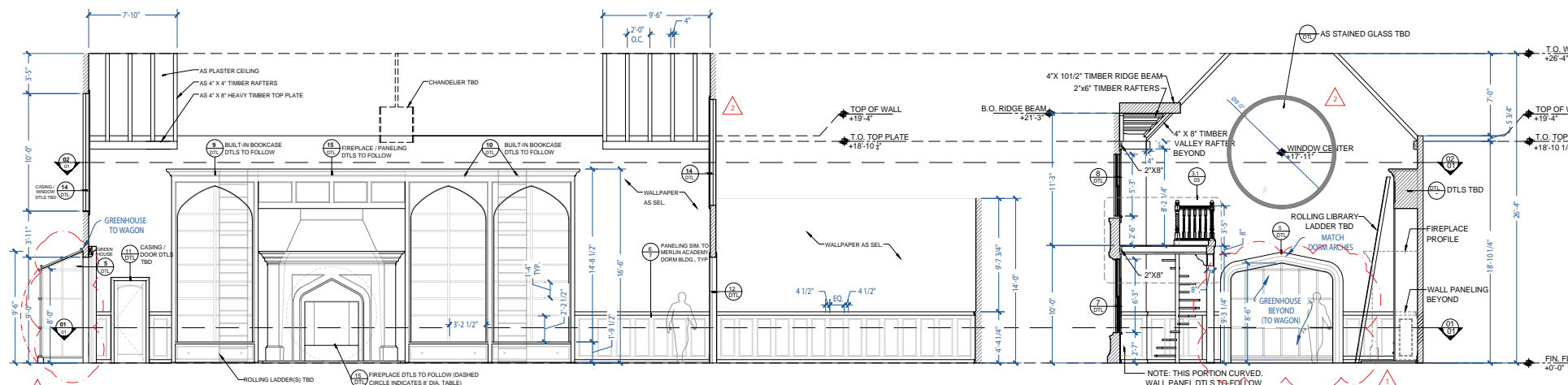


**A** CROSS-SECTION / ELEVATION

**C** SECTION / ELEVATION

Scale: 1/4" = 1'-0"

Scale: 1/4" = 1'-0"



**B** CROSS-SECTION / ELEVATION

**D** SECTION / ELEVATION

Scale: 1/4" = 1'-0"

Scale: 1/4" = 1'-0"

**REVISED**  
02/01/2023  
@3:30PM

GREENHOUSE ADDED  
CIRCULAR WINDOWS BOTH 9' DIA.

<p><b>POCKETWATCH</b></p>		<p>DIRECTOR: JENNIFER PHANG EXECUTIVE PRODUCER: SUZANNE TODD PRODUCTION DESIGNER: MARK HOTELING ART DIRECTOR: HUNTER BROWN CONSTRUCTION COORDINATOR: NASH SET DECORATOR: DEVITA WALKER</p>	
<p>SET NAME: INT. MERLIN ACADEMY-HEADMASTER'S OFFICE</p>	<p>SHEET: 02</p>	<p>TITLE: SECTION AND ELEVATIONS</p>	
<p>STAGE/LOC: STAGE 5</p>	<p>SCALE: AS NOTED</p>	<p>DRAWN J. STUMPF</p>	<p>BY: M. GEORGE</p>
<p>FILE: 135_02_SET_INT_HEADMASTERSOFFICE_230201_ELEVATIONS_MG_REV</p>	<p>SET NO: 135</p>	<p>APPROVALS</p>	
<p>PRODUCER</p>	<p>DIRECTOR</p>	<p>ART</p>	<p>PRODUCTION DESIGNER</p>
<p>STAGED I/C</p>	<p>SET</p>	<p>CONSET COORDINATOR</p>	<p>CHECK COORDINATOR</p>

**MERLIN ACADEMY - HEADMASTER'S OFFICE - SECTION/ELEVATIONS**







**TABLE TOP VIEW**  
Scale: 1/4" = 1'-0"

**A ELEVATION**  
Scale: 1/4" = 1'-0"

**B SECTION - THRU "LIGHTER" TABLE TOP**  
Scale: 1/4" = 1'-0"

**DETAIL SECTION - THRU "SOLID" TABLE TOP**  
Scale: 1/4" = 1'-0"

**PERSPECTIVE**  
Scale: 1/4" = 1'-0"

**RELEASED**  
02/07/2023 @ 2:00PM

**NOTE:**  
ACTOR ACTION  
CONSULT W/ STUNTS AND SFX  
2 TABLE TOPS REQUIRED FOR STUNTS  
1. SOLID TABLE TOP  
2. LAYERED PLY WITH FOAM INSERT TABLE TOP  
SEE PD FOR ADDITIONAL FINISH SELECTIONS

PROJECT:	INT. MERLIN ACADEMY HEADMASTER'S OFFICE	DATE:	02/07/2023
STAGE:	1	SCALE:	1/4" = 1'-0"
NO.	11	REV.	1

INT. MERLIN ACADEMY - HEADMASTER'S OFFICE - ROUND TABLE

**5-1 ELEVATION - FIREPLACE**  
Scale: 1/4" = 1'-0"

**5-2 VERTICAL SECTION - FIREPLACE**  
Scale: 1/4" = 1'-0"

**5-3 VERTICAL SECTION - FIREPLACE**  
Scale: 1/4" = 1'-0"

**15-1 HORIZONTAL SECTION - FIREPLACE**  
Scale: 1/4" = 1'-0"

**NOTE: FINISH AS STONE UNLESS OTHERWISE DIRECTED**

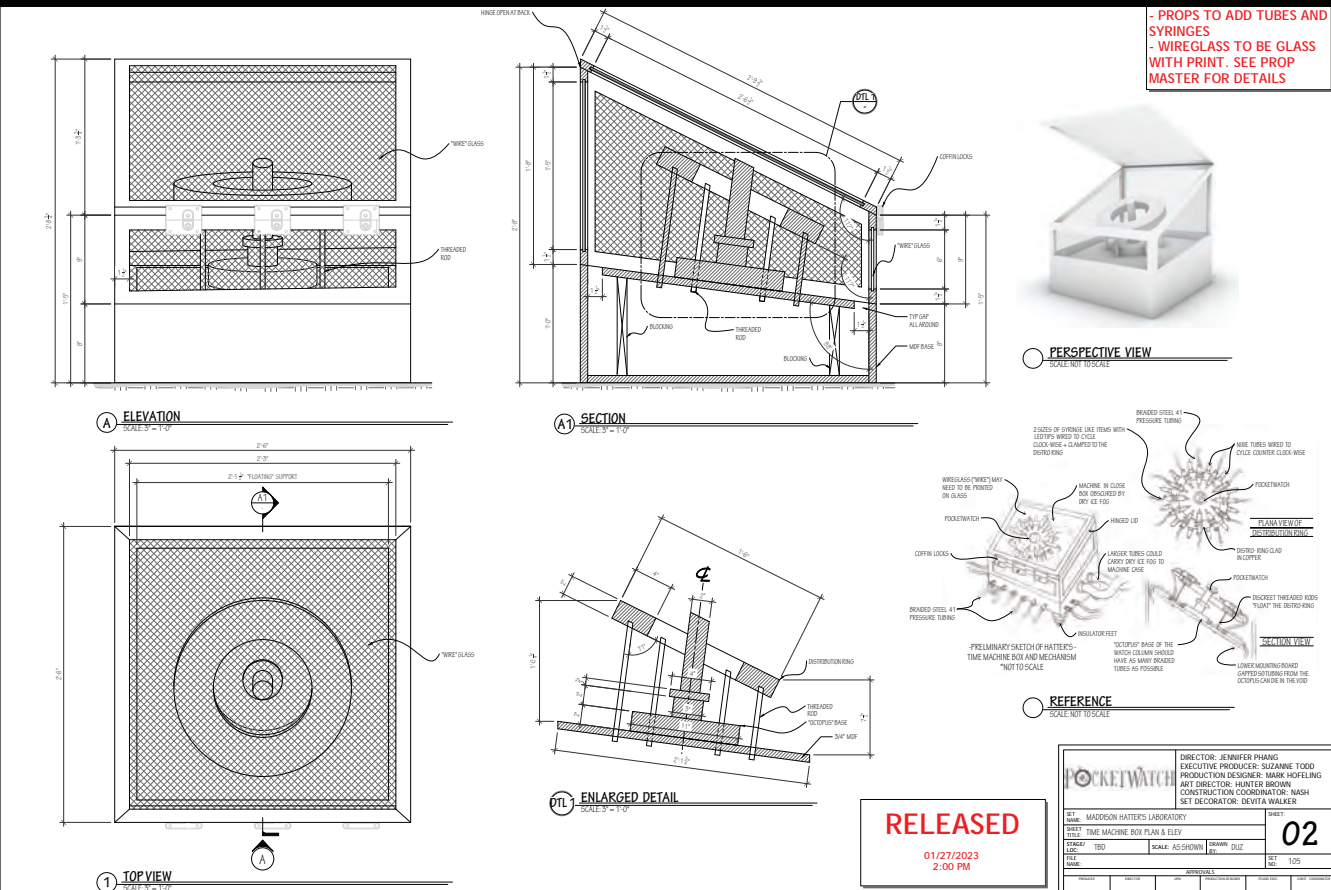
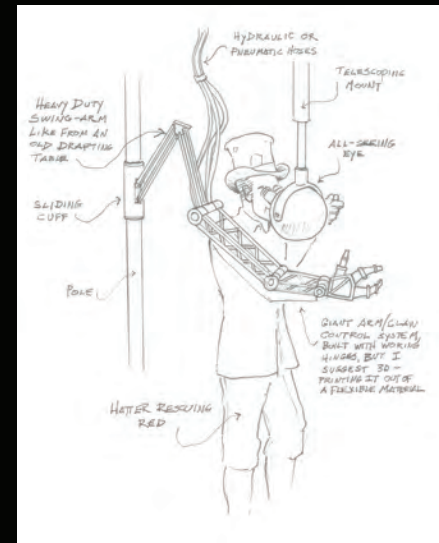
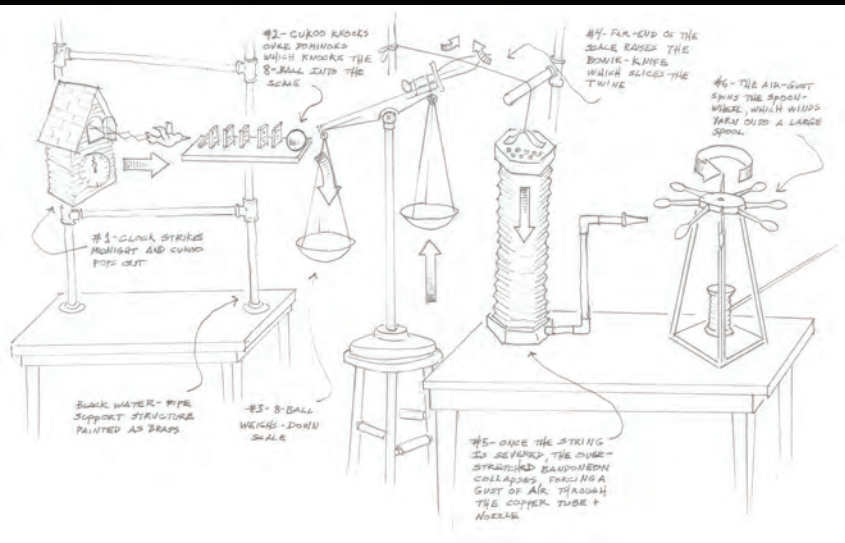
**PRELIMINARY**  
January 24, 2023

PROJECT:	INT. MERLIN ACADEMY HEADMASTER'S OFFICE	DATE:	01/24/2023
STAGE:	1	SCALE:	1/4" = 1'-0"
NO.	11	REV.	1





MADDOX HATTER'S LABORATORY





**TECHNICAL NOTES:**  
 COVER INTERIOR OF RIB FRAME AND SPINE WITH VEGGIES  
 COVER RIBS WITH PLASTIC TO CREATE SHINY GLOSS SHEEN AND ADD BRILLIANCE BY TREATING THE PLASTIC FOR BRILLIANCE IN THE DARK  
 COVER INTERIOR WITH VEGGIES TO CREATE SHINY GLOSS SHEEN AND ADD BRILLIANCE BY TREATING THE PLASTIC FOR BRILLIANCE IN THE DARK  
 CUT WITH CARE BY AN APPROVED COLLECTOR (PROVIDE SAMPLE TEST USE PATENTERS AREA FOR APPROVED TEST)  
 ADD DETAILING WHEN IN THE BACKGROUND BY CUTTING PLACEMENT PER P.O. AND ADD COLOR TO BRILLIANT FEATURE

**FILL IN WHERE RIBS, SKIN, AND FLOOR MEET**

RELEASED 1/26/23 3:10PM

LEWIS LAB    DATE CREATED: 11/23/2022    SHEET NO: 1 OF 4    DRAWN BY: H. BROWN    POCKET WATCH

**GAUDEMUSIAN SCALE: 1/4"=1"**

**NOTES:**  
 DIRT SKIN? SKIN AND HEAVY TEXTURE INSIDE OYSTER SHELL, BARNACLES, CORALS IN CREVICES AROUND RIBS  
 HAND COATED FOAM ANTI-WEAR LOOKING PRETEXT 1/4" OF BARNACLE ACTORS DANCING ON IT  
 HAND COATED FOAM RIBS AND SPINE BUILDUP OF SEA RIBS - 2" RIBS OF 1/4" BARNACLE ACTORS DANCING ON IT

RELEASED 1/26/23 3:10PM

LEWIS LAB    DATE CREATED: 11/23/2022    SHEET NO: 1 OF 4    DRAWN BY: H. BROWN    POCKET WATCH

**SCALE: 1/2" = 1"**

RELEASED 1/26/23 3:10PM

LEWIS LAB    DATE CREATED: 11/23/2022    SHEET NO: 1 OF 4    DRAWN BY: H. BROWN    POCKET WATCH

**NOTE: THESE MEASUREMENTS ARE A ROUGH GUIDE, NOT TO BE EXACT BUT CLOSE**

**TYPICAL RIB PROFILE SCALE: 1/4"=1"**

**TYPICAL SPINAL TUB PROFILE SCALE: 1/4"=1"**

**TYPICAL RIB PROFILE SCALE: 1/4"=1"**

**TYPICAL RIB PROFILE SCALE: 1/4"=1"**

RELEASED 1/26/23 3:10PM

LEWIS LAB    DATE CREATED: 11/23/2022    SHEET NO: 1 OF 4    DRAWN BY: H. BROWN    POCKET WATCH



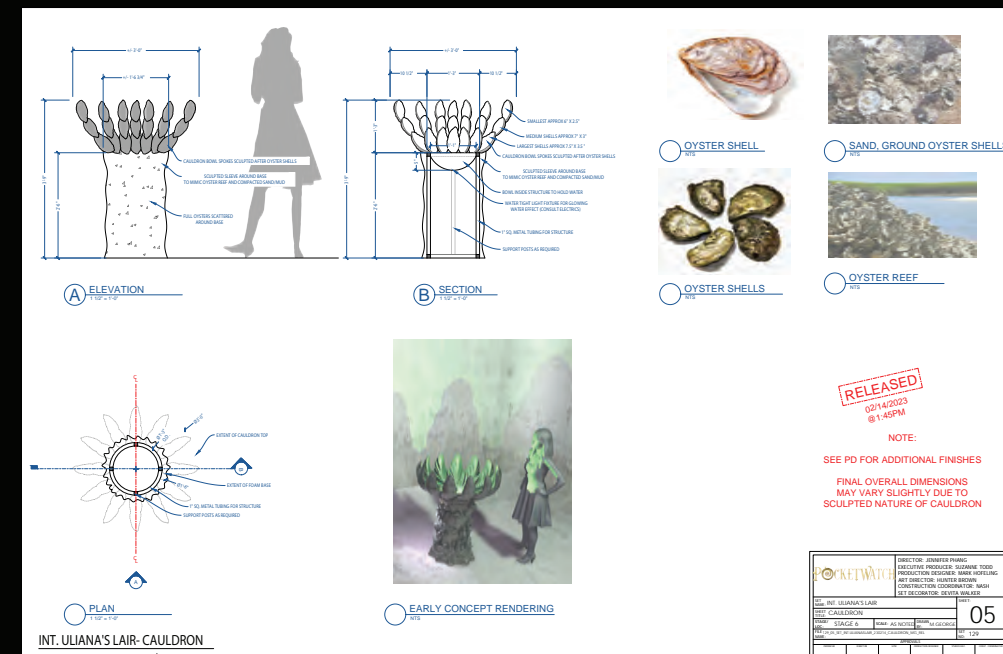
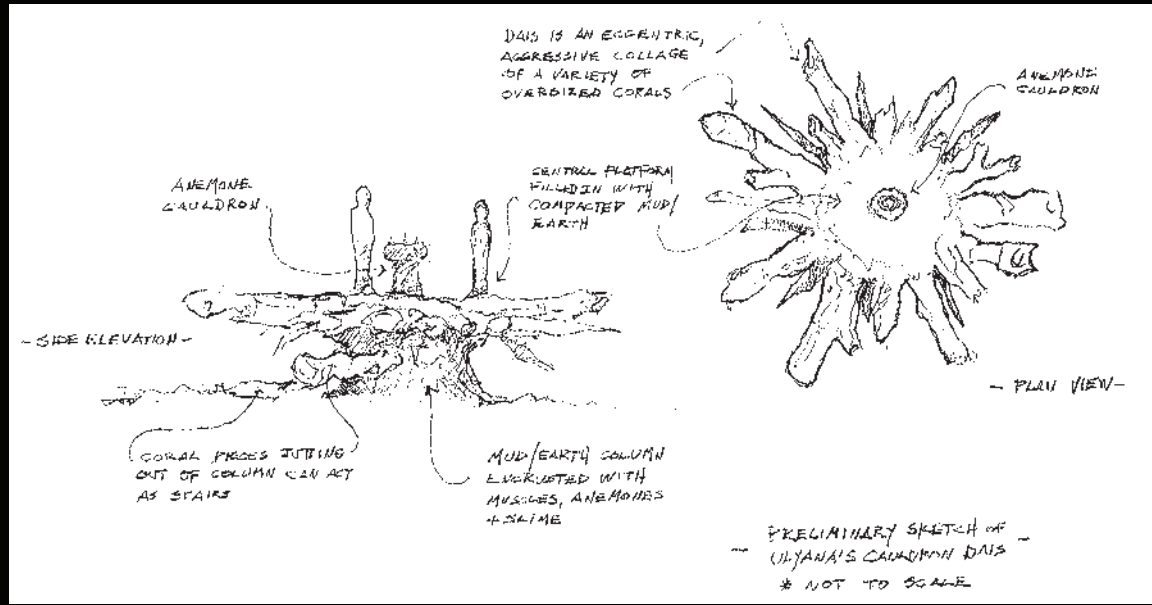
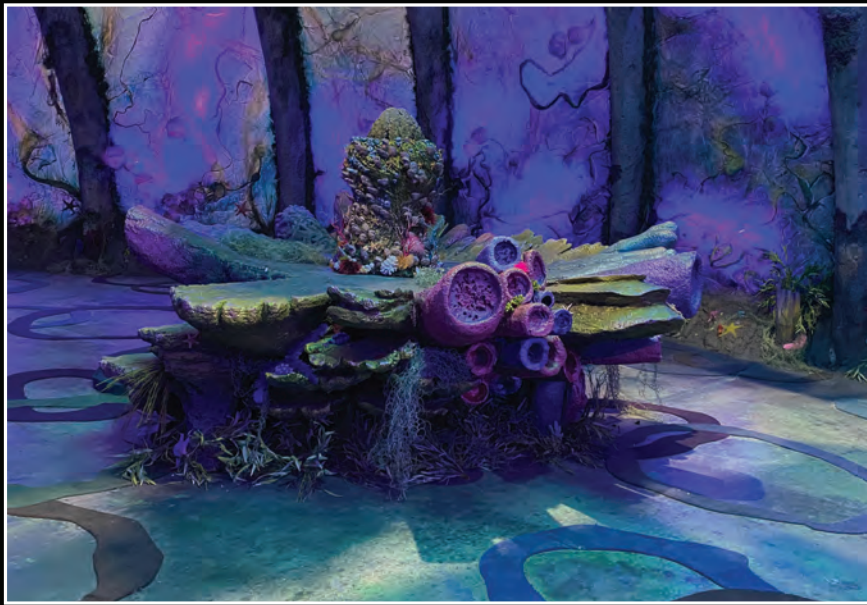
# ULYANA'S LAIR IN THE BLACK LAGOON





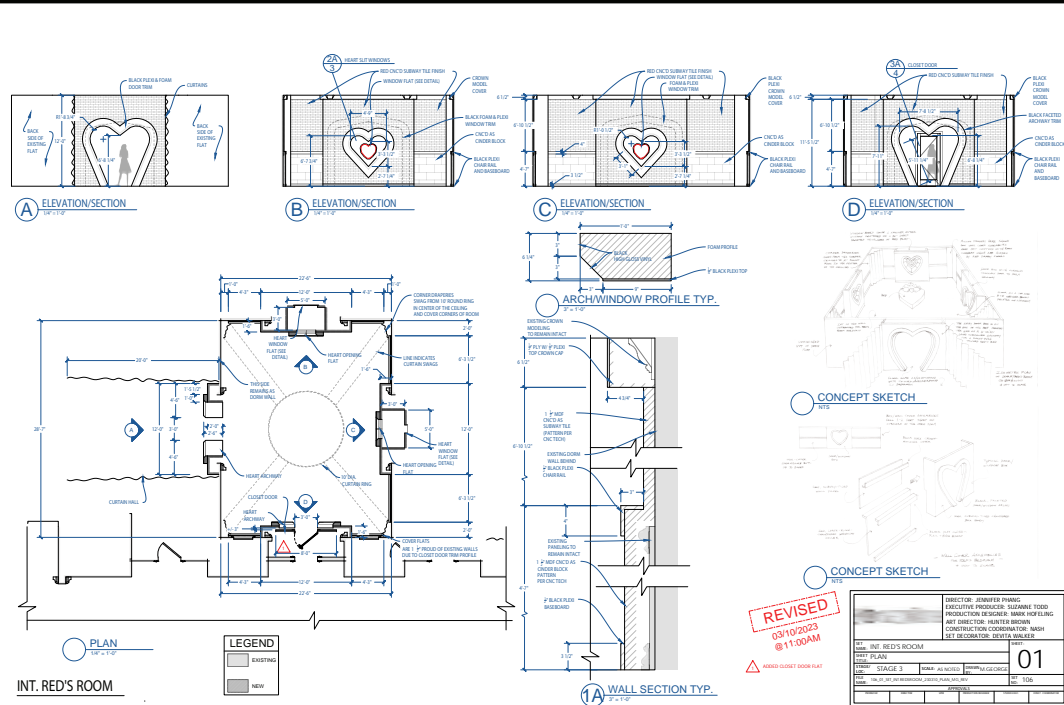






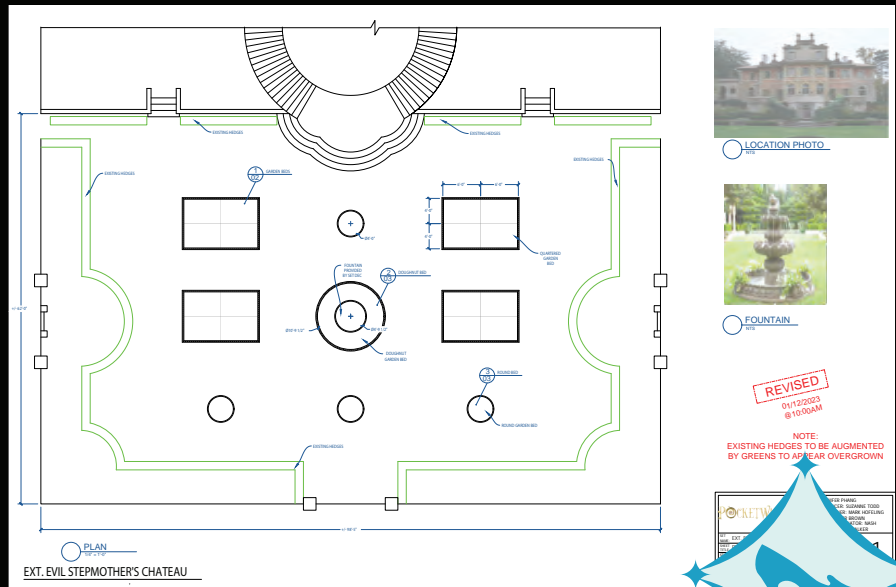
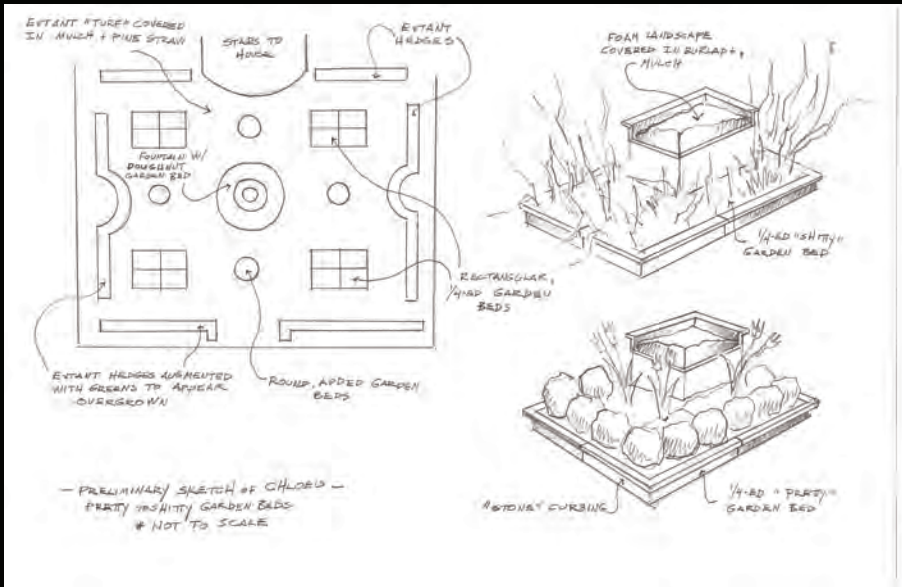


RED'S BEDROOM

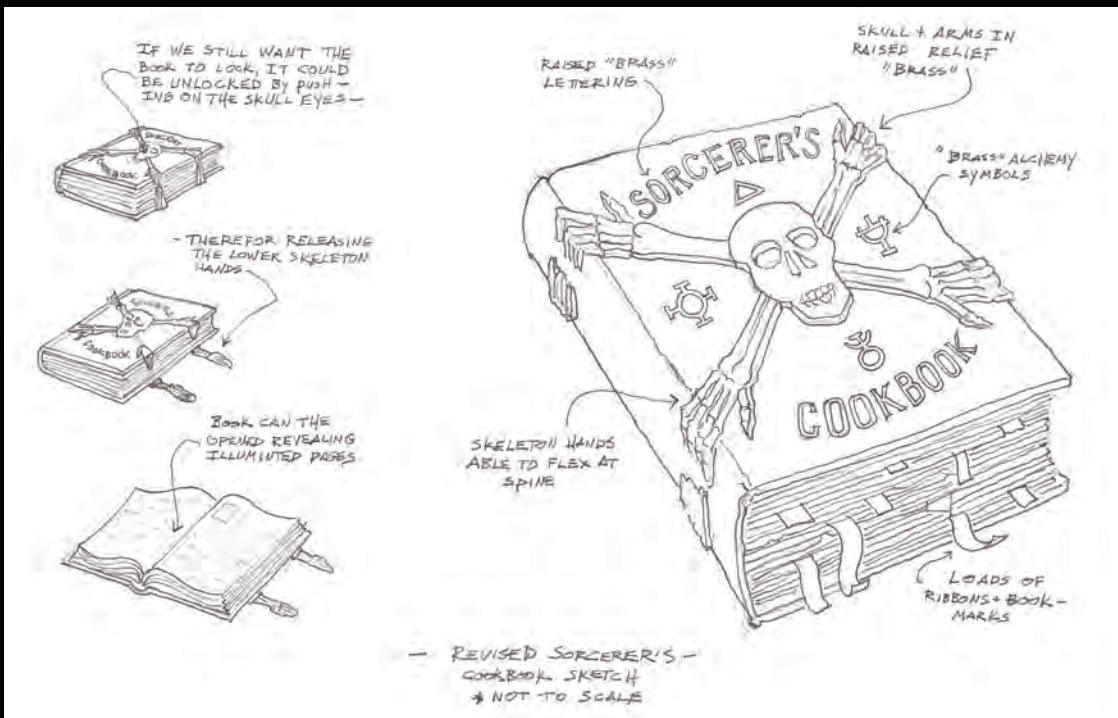




# AURADON PREP DORM ROOM AND HALLS

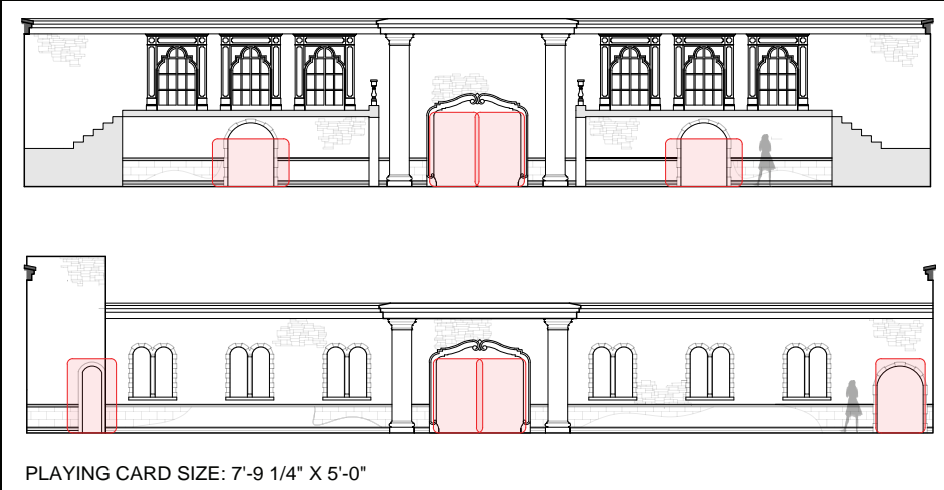


# EVIL STEPMOTHER'S CHATEAU



# DESCENDANTS: THE RISE OF RED-PROPS DESIGN

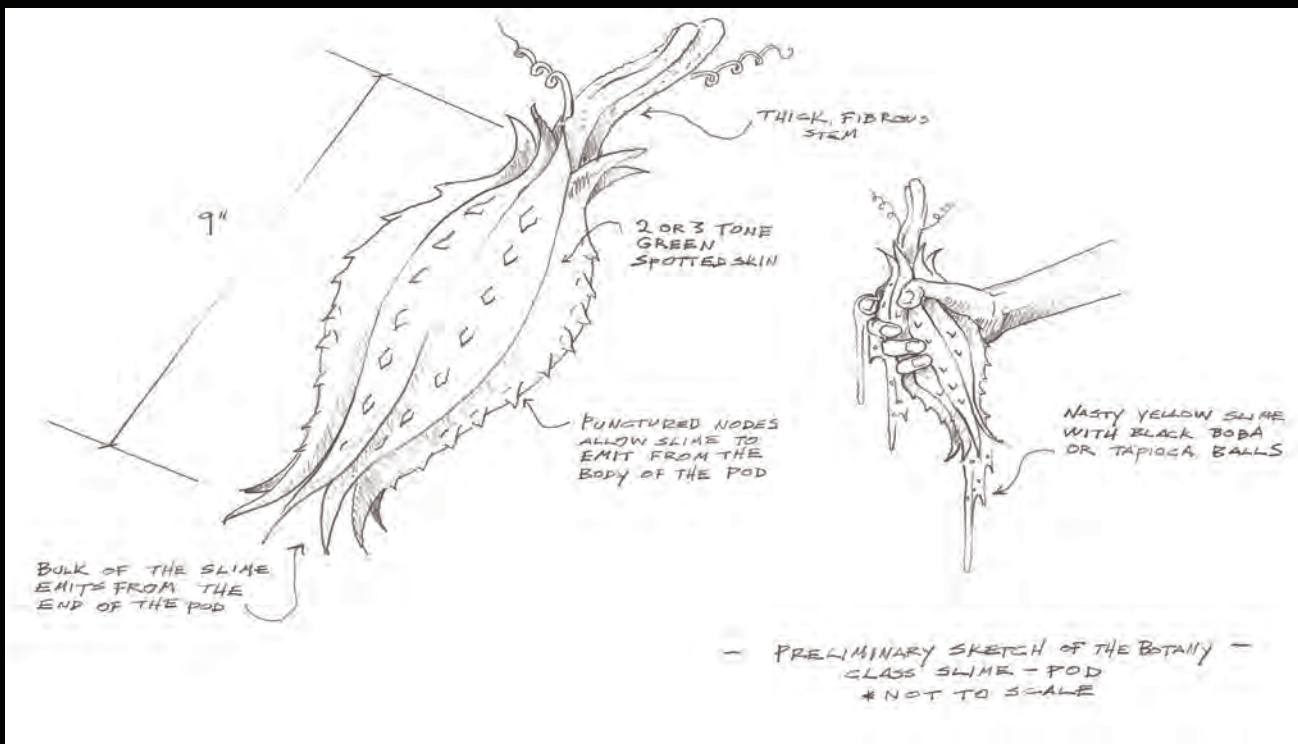




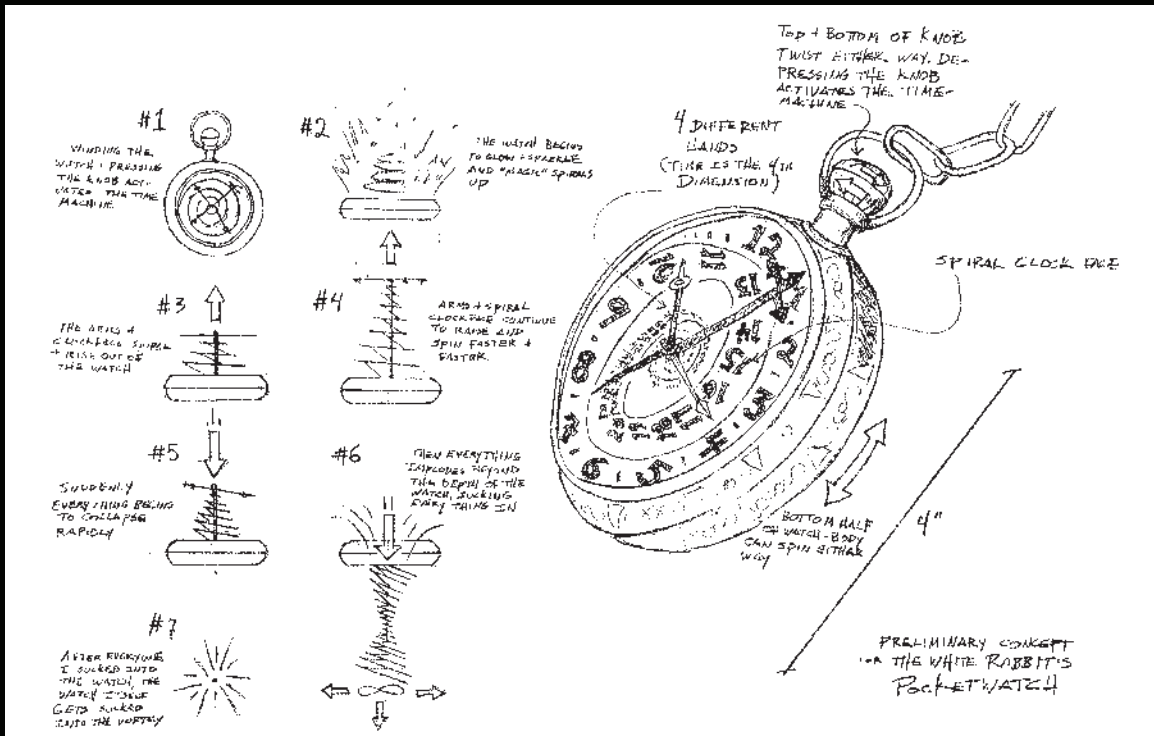
PLAYING CARD SIZE: 7'-9 1/4" X 5'-0"



# DESCENDANTS: THE RISE OF RED-PROPS DESIGN



# DESCENDANTS: THE RISE OF RED-PROPS DESIGN



# DESCENDANTS: THE RISE OF RED-PROPS DESIGN



PRODUCTION DESIGNER-MARK HOFELING  
SUPERVISING ART DIRECTOR-HUNTER BROWN  
ART DIRECTOR-TRACY BREYFOGLE  
SET DESIGNER MEGAN NARDUZZI  
SET DESIGNER-MARYANN GEORGE  
GRAPHICS DESIGNER-KATE EMERY  
SET DECORATOR-DEVITA WALKER

DESCENDANTS: THE RISE OF RED