



grown·ish

THE FINAL SEASON

FOR YOUR CONSIDERATION
Half Hour Single Camera Series

Freeform

Production Designer • Kristan Andrews

Art Director • Sarah Palmrose

Set Designer • Sarah Brown

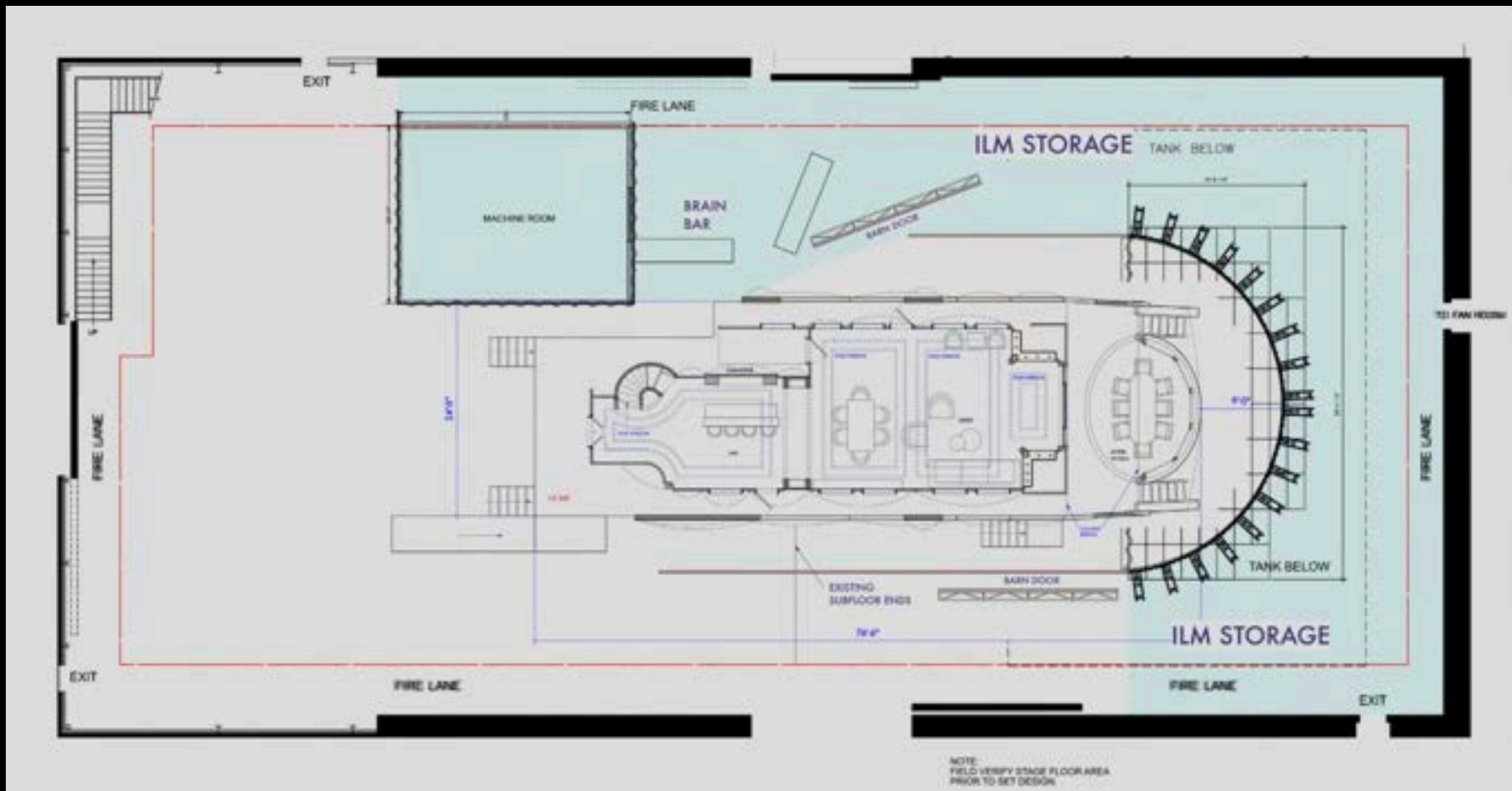
Graphic Designer • Hilary DeWaay

Set Decorator • Jennifer Fulmer



The series finale culminated with Andre's graduation and an unexpected celebration on a yacht. Various production challenges were solved by building a yacht interior on the Disney ILM Volume Stage 1. Constructed in just 9 days, it was the largest set ever built on that stage and cut seamlessly with the practical yacht exterior.





Additional LED Panels and blue screens were brought into to expand the volume area

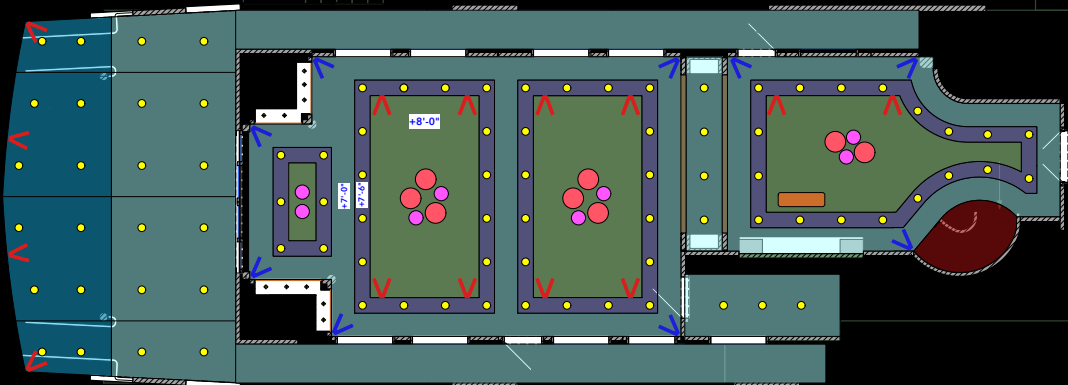


Following a detailed survey of the practical yacht, creating a 3D model helped the director and DP define the various action areas and streamlined the construction/rig/lighting process.

Building our own yacht interior meant we could design a much more stylish main salon with more defined areas for the various action. A great deal of attention and communication was put into creating an integrated lighting plan to minimize set up time and highlight the shape and visual interest of the set interior. Scheduling was tight and all prep/rigging crews including ILM had to work together in the tight space. Eventually we found a way to incorporate and hide 23 motion capture cameras.



In certain areas of the set, paper bowls from craft services were painted and used to camouflage the motion capture cameras.



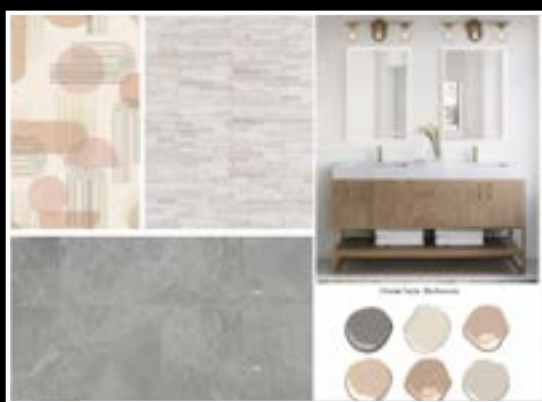
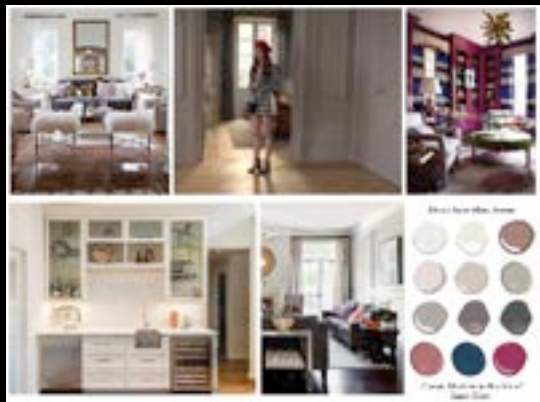
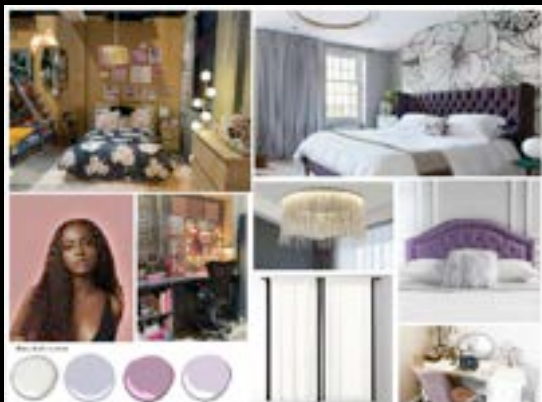
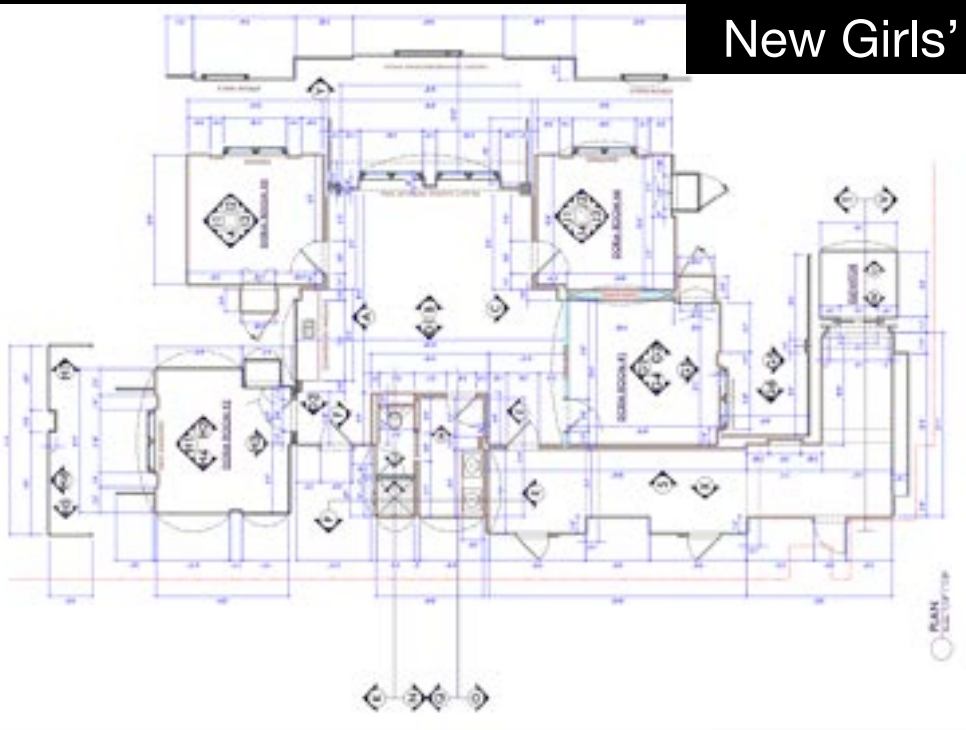
The RCP layout for the double tray soffit ribbon lights, wall channel lights, 87 4" soffit cans, three custom ceiling cluster chandeliers, illuminated bar and entry walls, 11 sconces, 2 chandeliers, various nook lights and additional set dressing lamps. All in 715 sq feet.







New Girls' Dorm Suite



Dorm suite common living area



kitchenette and bathroom



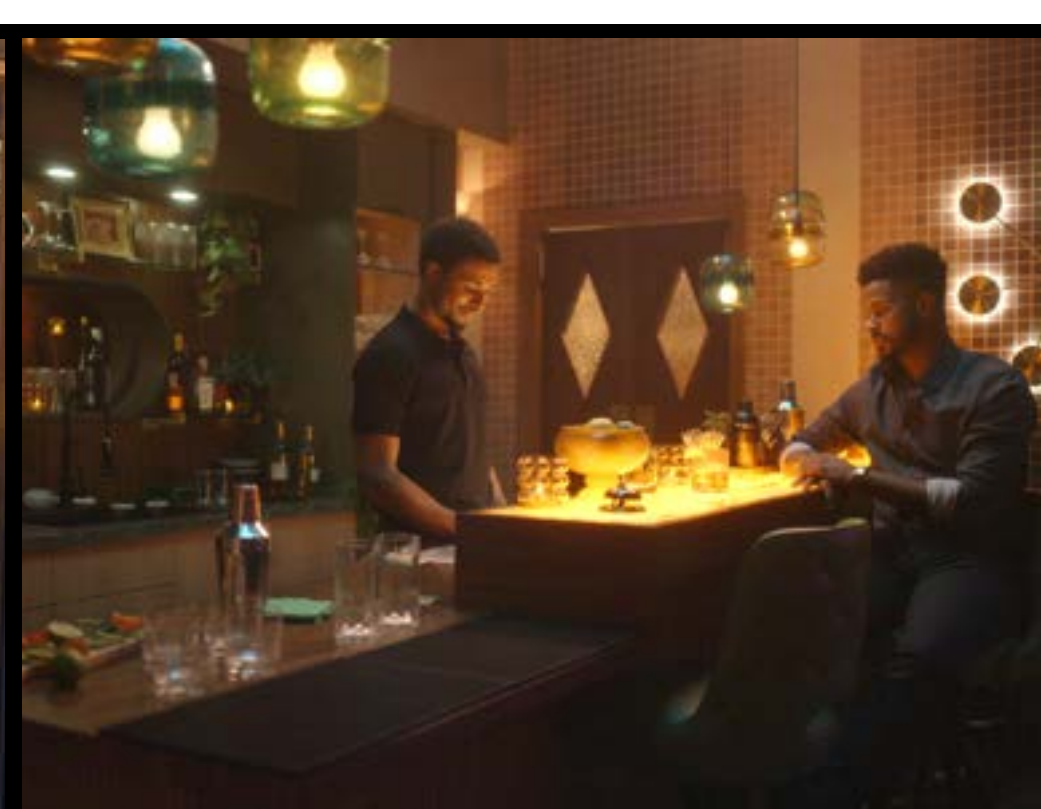
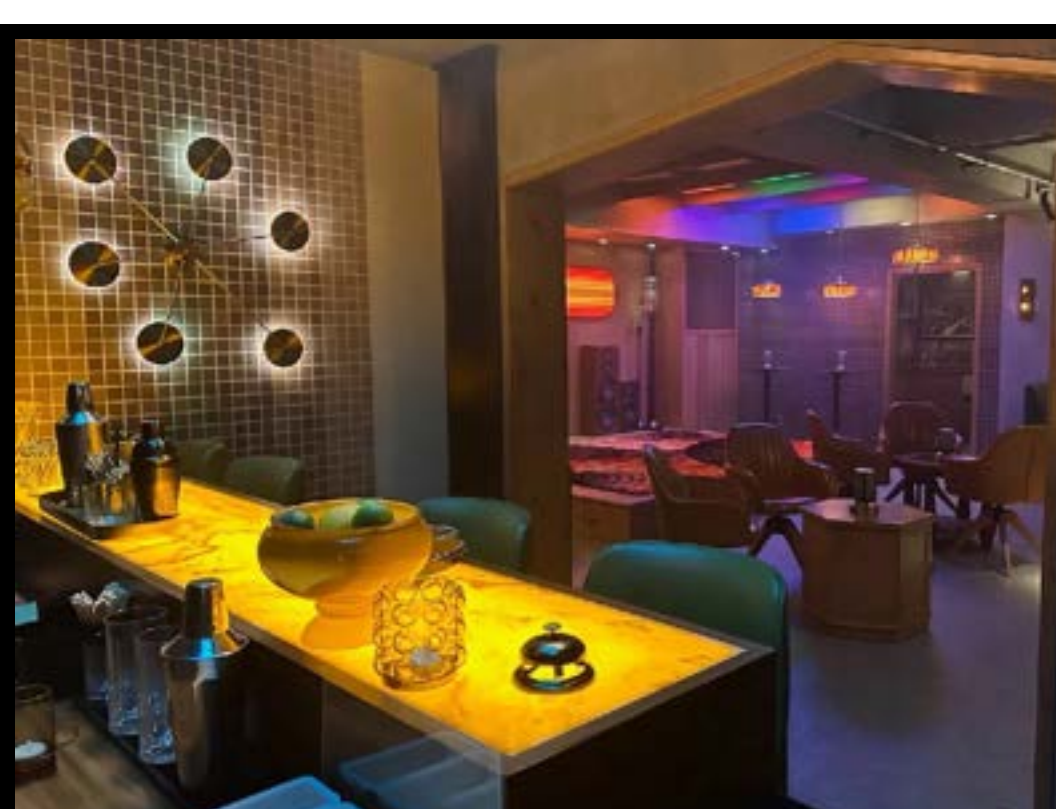
three main character bedrooms



“The Dougout” 70’s basement speakeasy bar and stage







“The Dougout” 70’s basement speakeasy bar and stage



THANK YOU FOR YOUR CONSIDERATION.

Grown-ish Art Department