

THE ACOLYTE

Production Designer : Kevin Jenkins

Set Decorator : Robert Cameron

The Acolyte is the first live-action Star Wars production to be designed outside of the existing timeline created by George Lucas. Set one hundred years before any 'Wars' in the stars created a design challenge. In most cases we could not rely on previous design motifs used for the previous forty years. Every world, ship and location was designed for this production apart from the pre established world of Corruscant. The showrunner's vision was to design every set practically, to shoot on location and mirror methods used in the original trilogy for this new time period.





Concept Art



Final Frame



Set Build



Concept Art



Final Frame



Set Build



Set Build



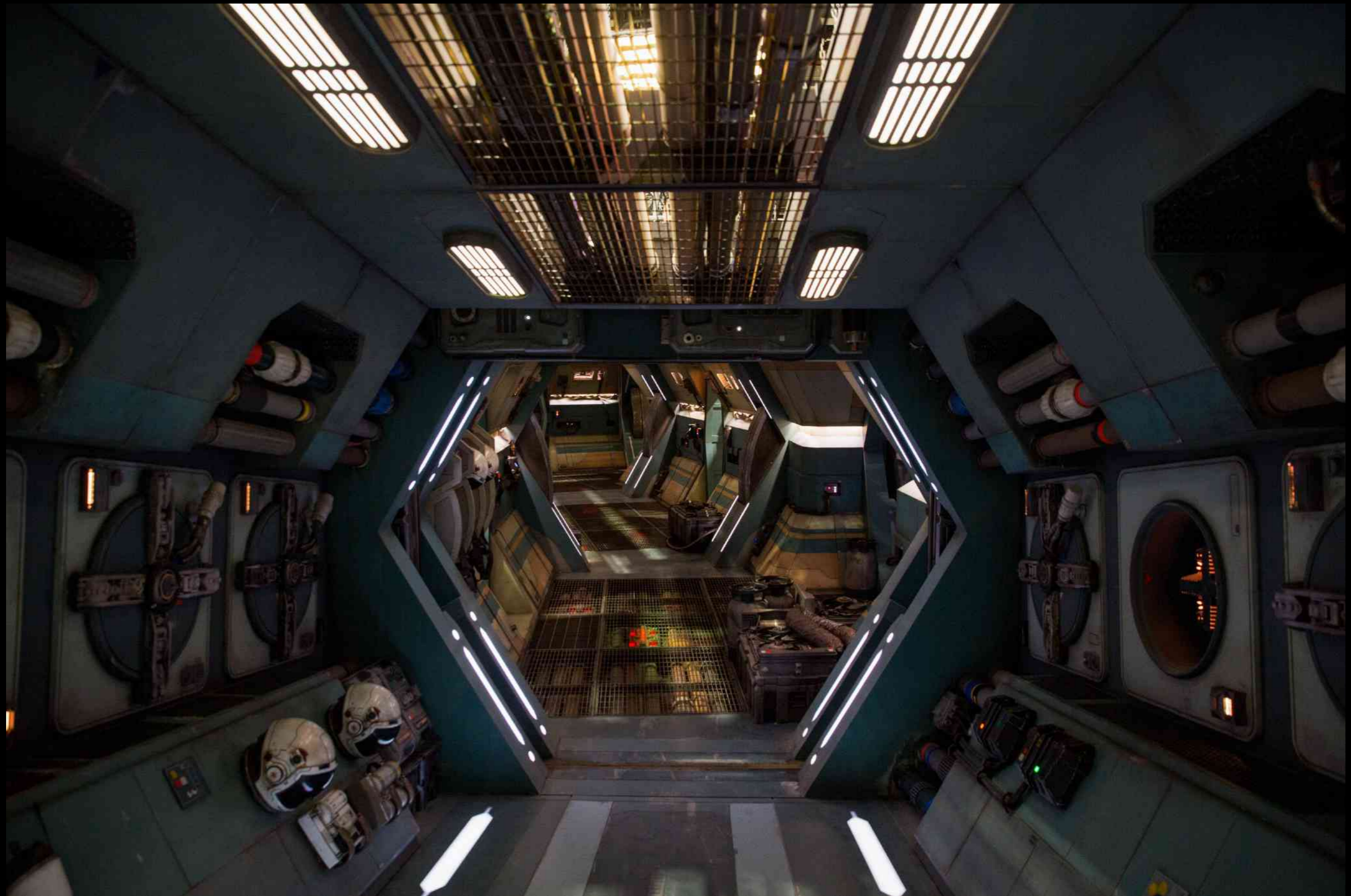
Set Build



Set Build



Set Build



Set Build





Final Frame





Final Frame

Concept Art



Final Frame



Concept Art

Final Frame



Concept Art

STEPHEN TAPPIN



Set Build





Final Frame

Concept Art



U

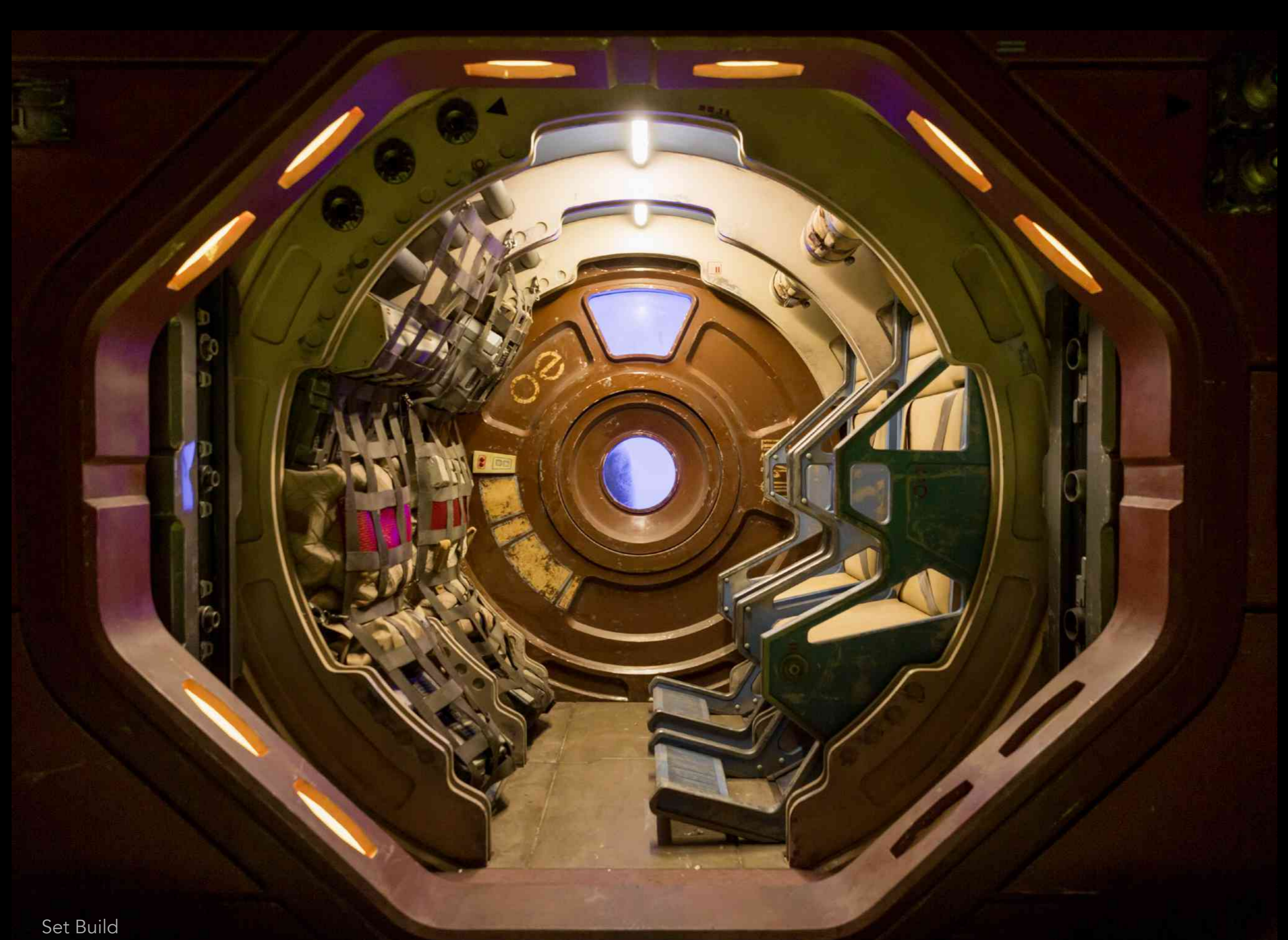


Final Frame



Set Build



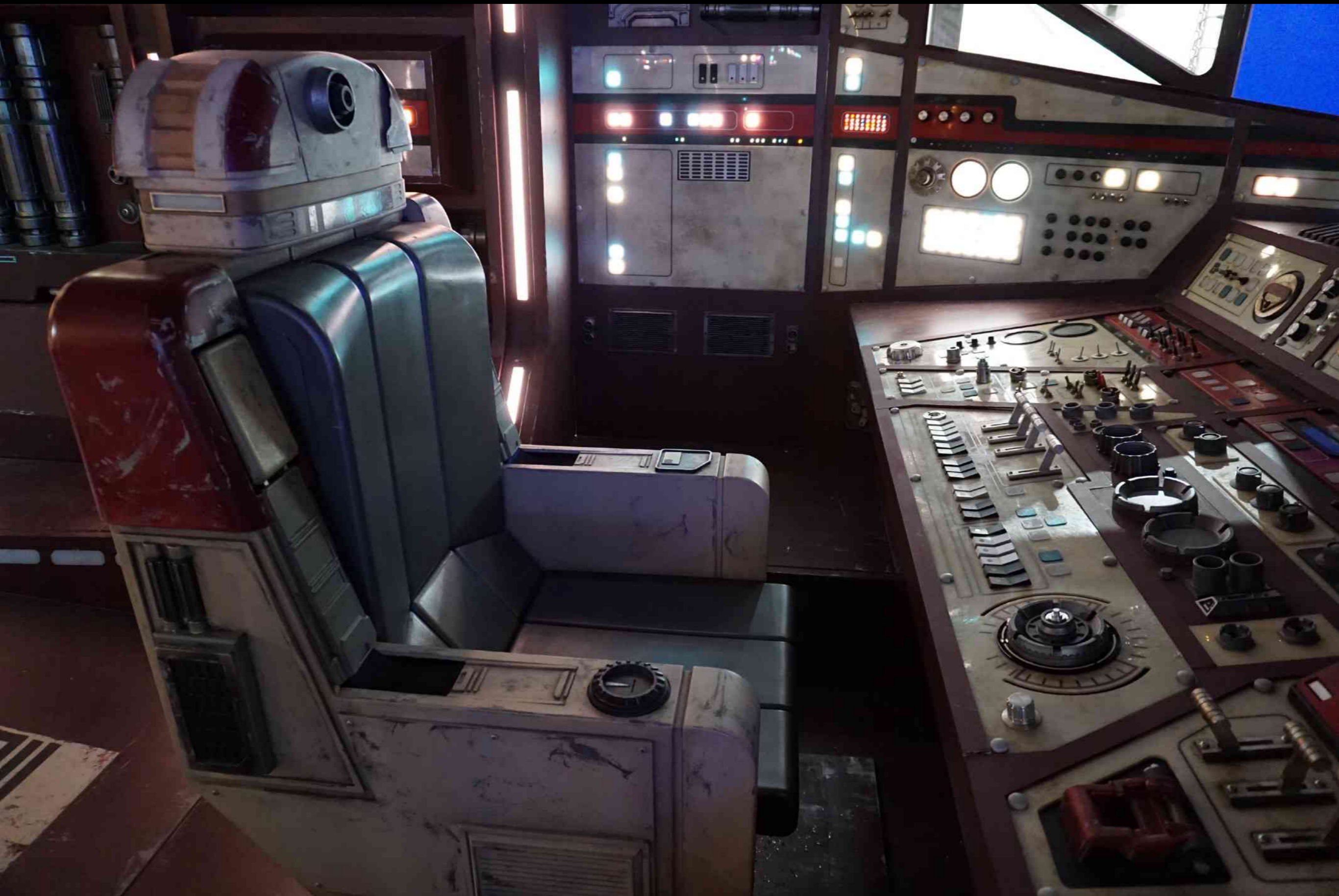


Set Build



Set Build







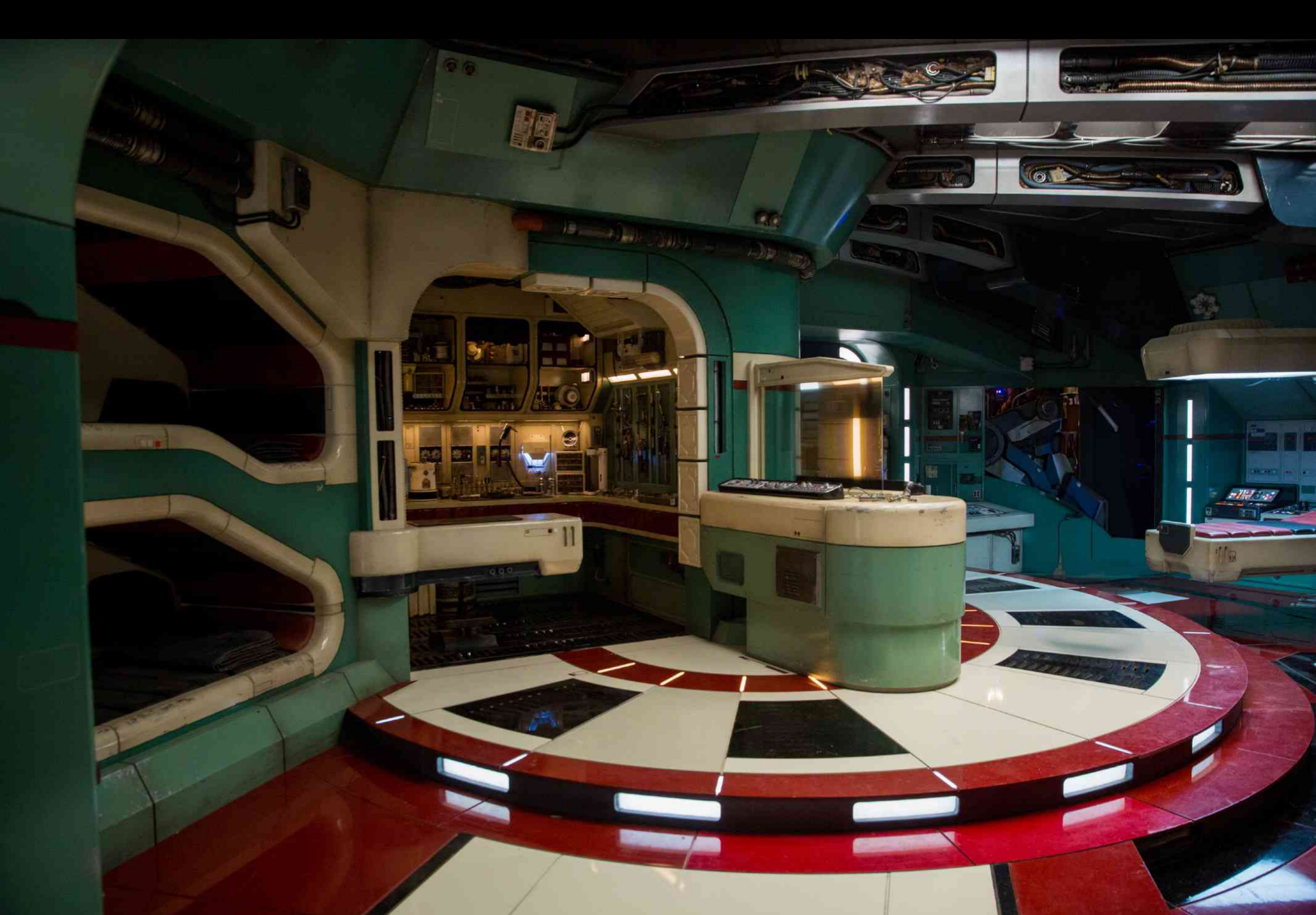
Set Build



Final Frame



Final Frame





Set Build



Set Build



Set Build

Concept Art



Final Frame



Final Frame





Concept Art



Final Frame



Final Frame



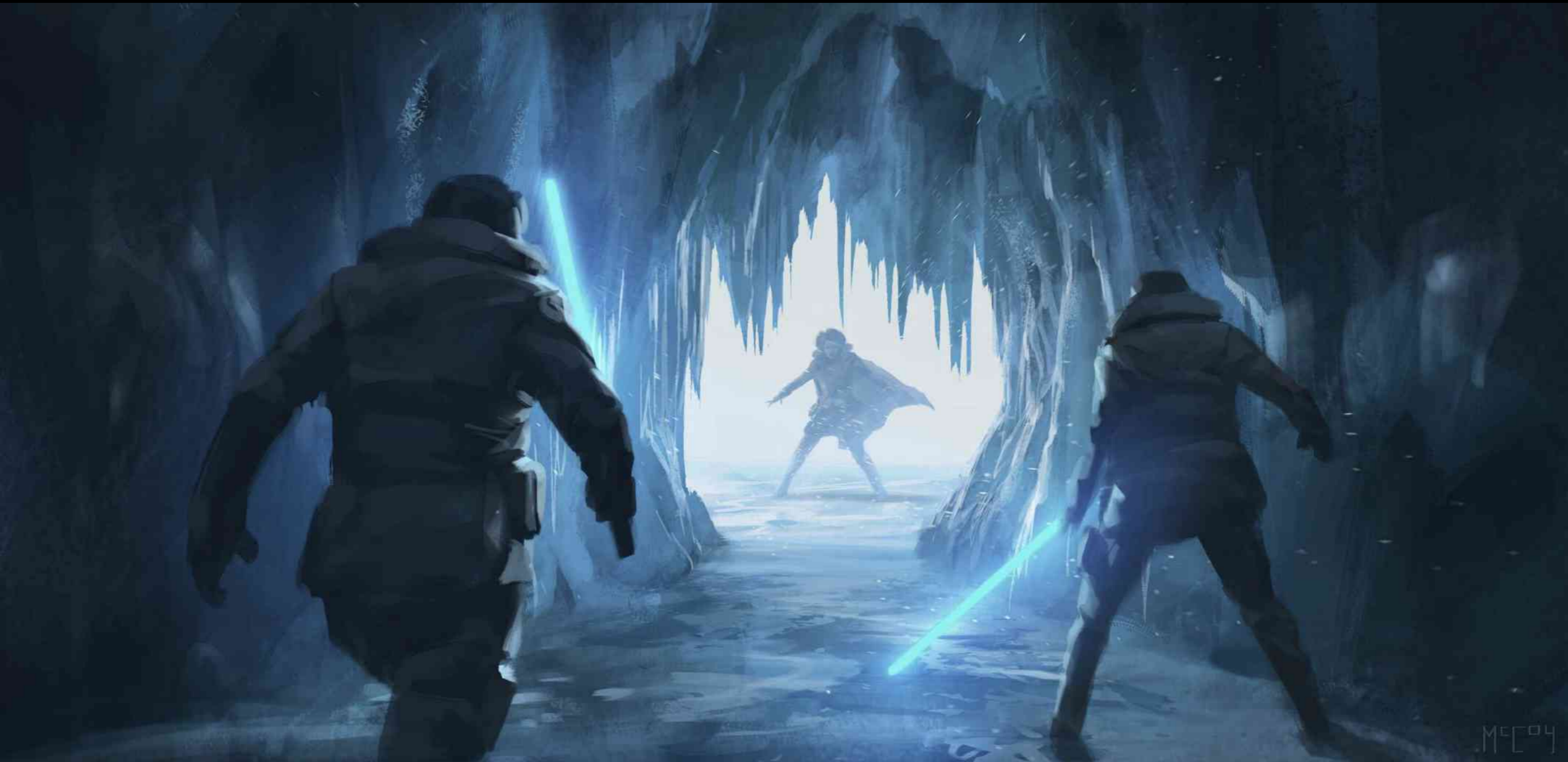
Concept Art



Concept Art



Final Frame



M[?]M[?]

Concept Art



Final Frame

Final Frame



Concept Art