

3 BODY PROBLEM



Episode 2
Production Design

RED COAST
DEBORAH RILEY



INT. RED COAST BASE - MAIN CONTROL ROOM - Hero Console Position

Shepperton Studios



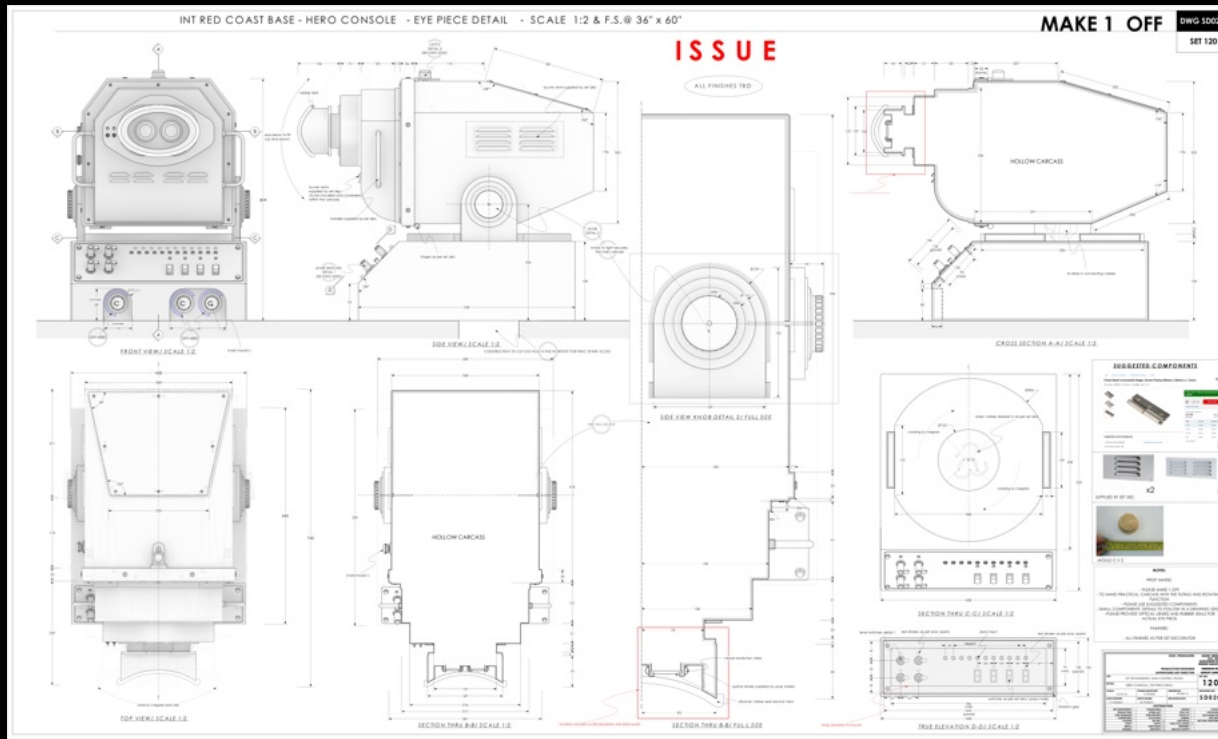


INT. RED COAST BASE - MAIN CONTROL ROOM - Listening Position

Shepperton Studios



It's like listening
to the ocean for eight hours.



INT. RED COAST BASE - MAIN CONTROL ROOM - Viewfinder Construction

Shepperton Studios

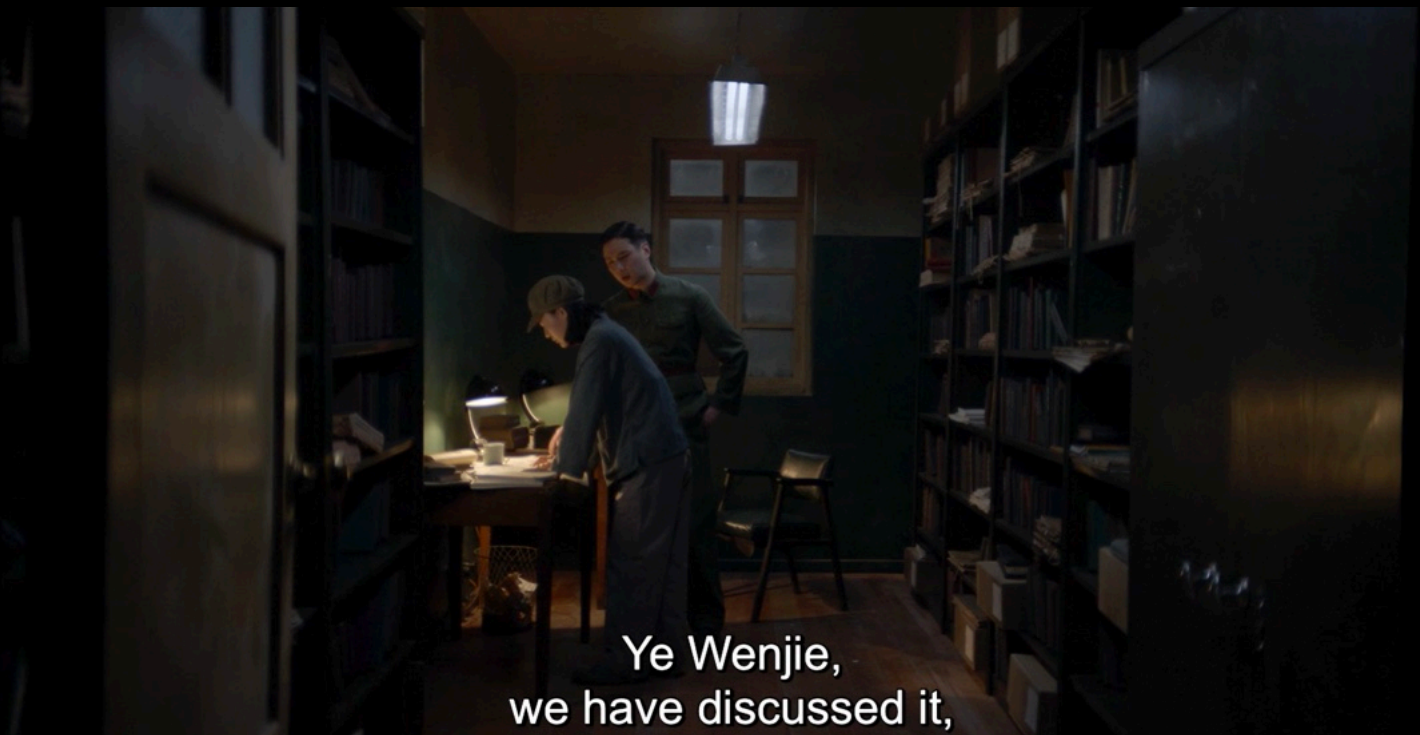


Still



INT. RED COAST BASE - READING ROOM

Shepperton Studios



Ye Wenjie,
we have discussed it,



Set Dressing



INT. RED COAST BASE - COMMISSIONER'S OFFICE

Shepperton Studios



Still



EXT. RED COAST BASE

Concepts

Las Villuercas, Spain



*We extend our best wishes to you,
inhabitants of another world.*

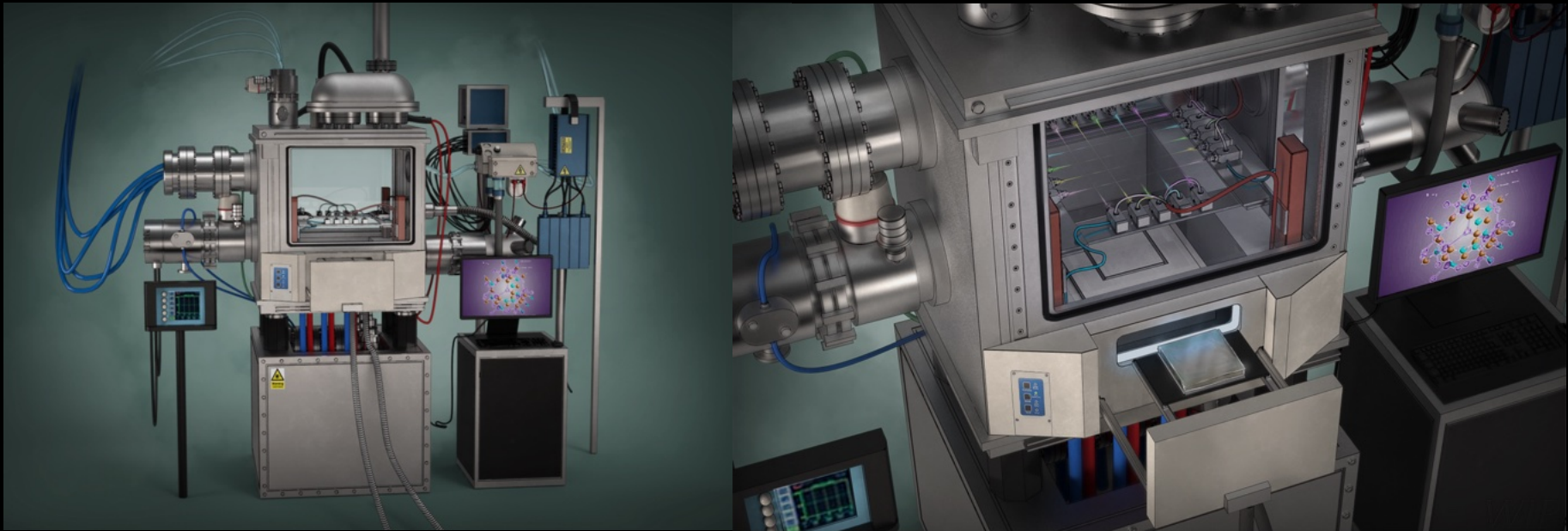
Still



INT. NANOTECH RESEARCH CENTER - LABORATORY & CLEAN ROOM

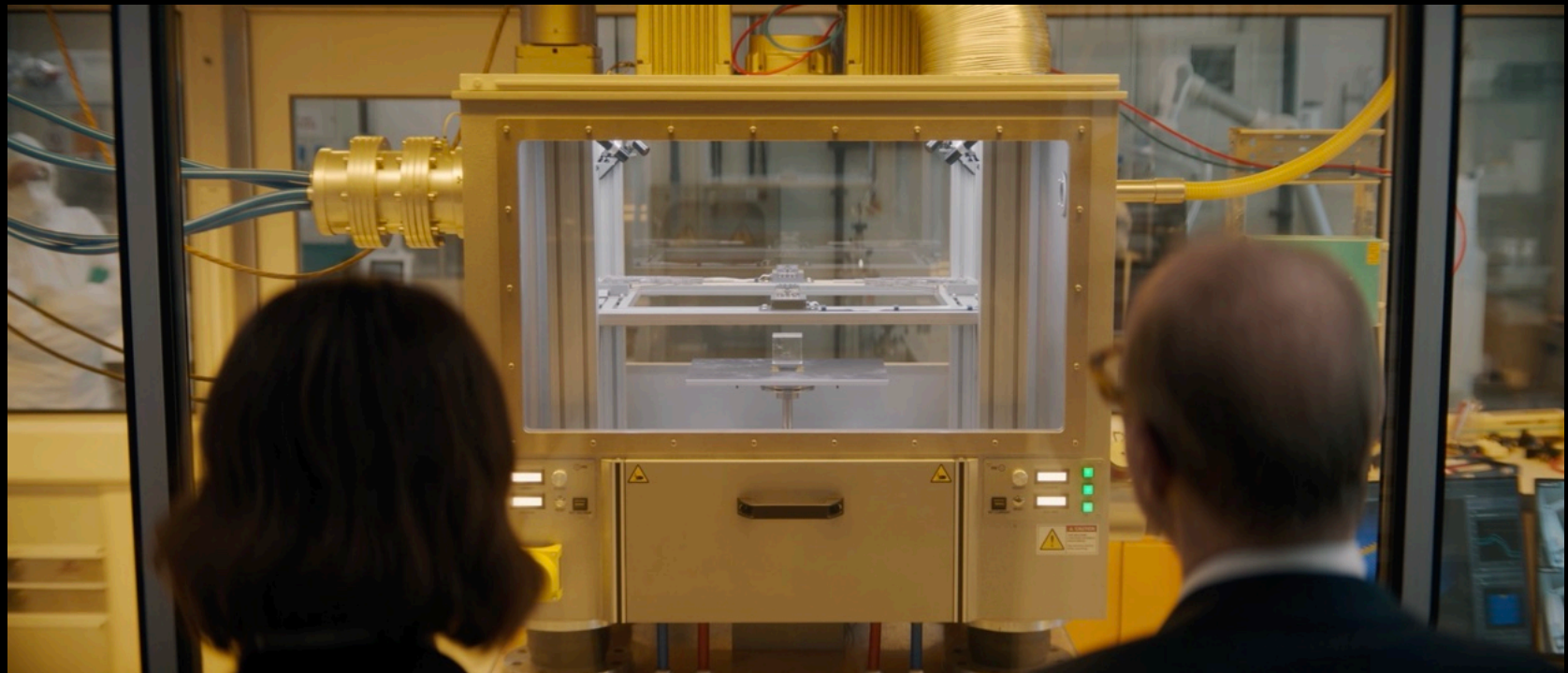
Discovery Park, Sandwich





INT. NANOTECH RESEARCH CENTER - Diamond Cutter

Discovery Park, Sandwich

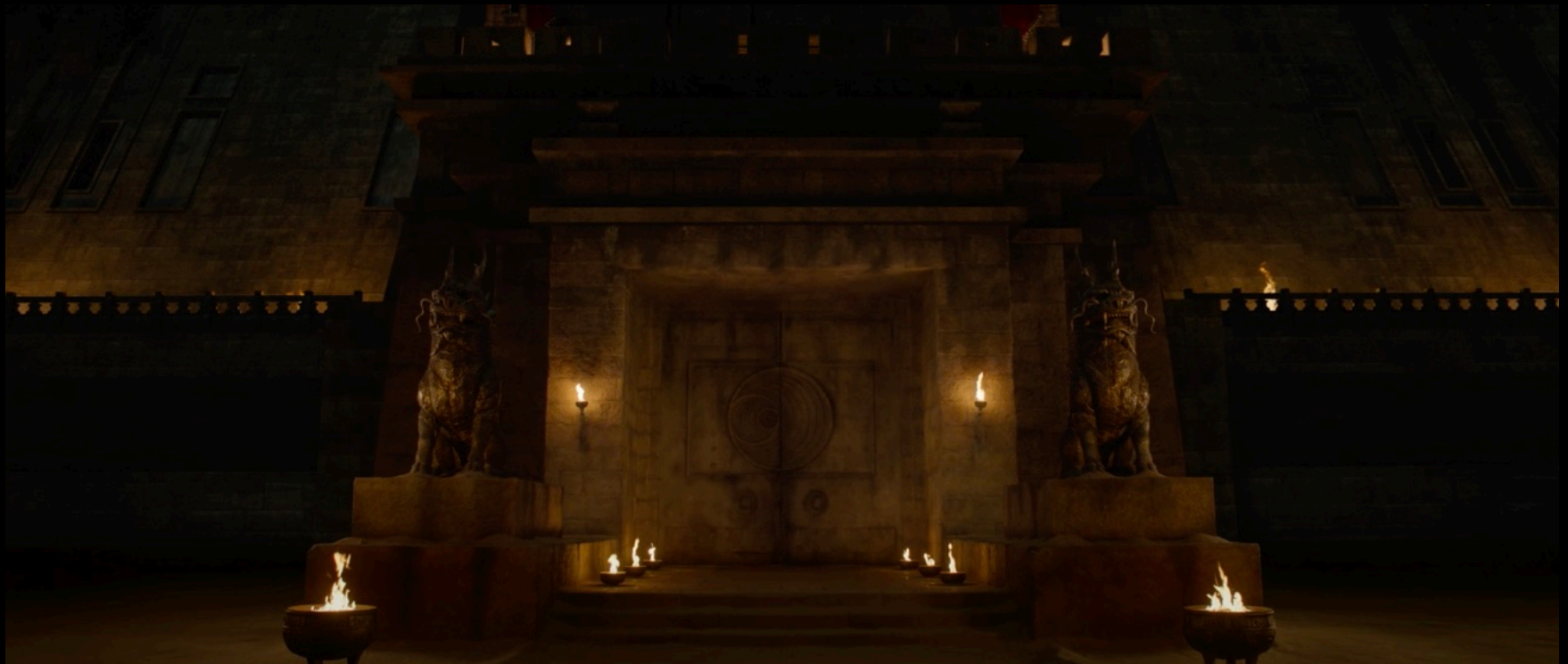


Concept



EXT. PYRAMID - MAIN DOOR

Farnborough Studios



Still



Maquette



EXT PYRAMID - QILIN
SCULPT & CONSTRUCTION

Farnborough Studios



Concept



INT. PYRAMID - I CHING MANDALA

Farnborough Studios



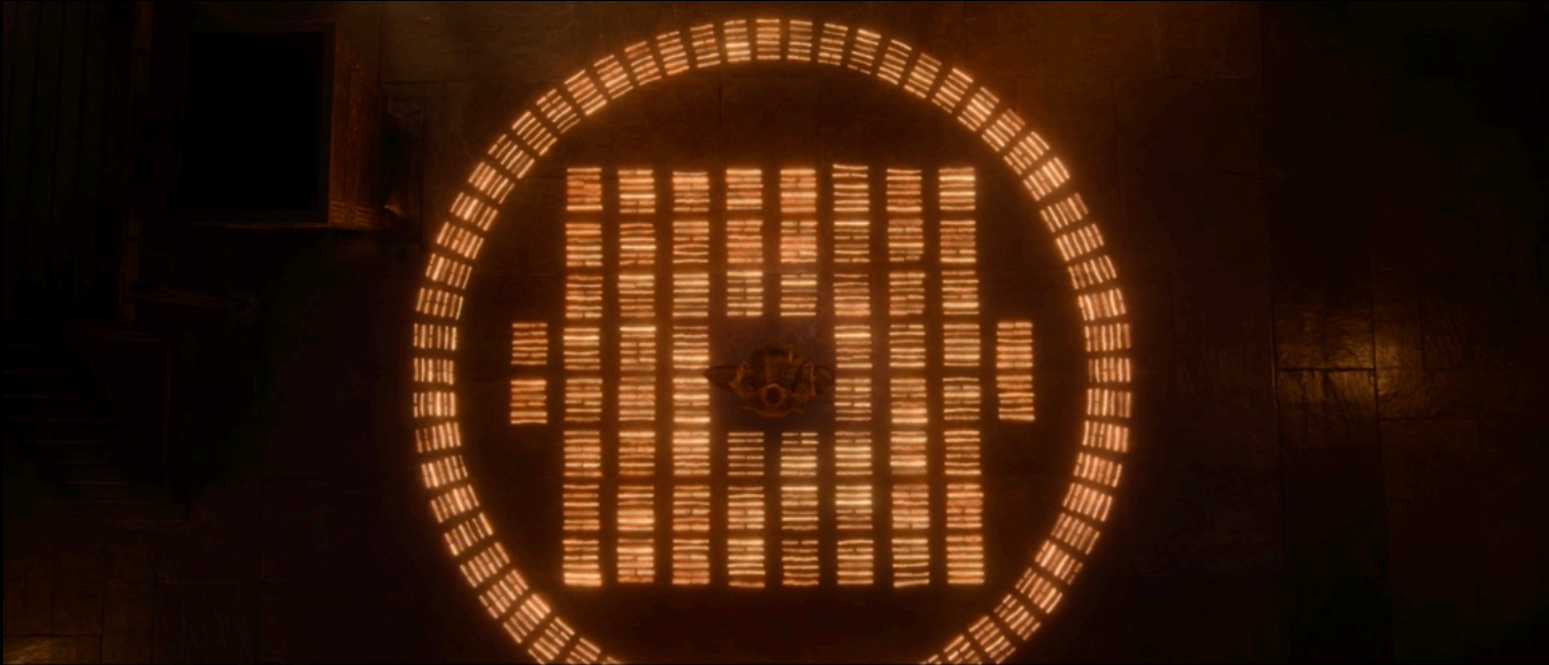
Still

Concept



INT. PYRAMID - GLOWING I CHING MANDALA

Farnborough Studios



Still



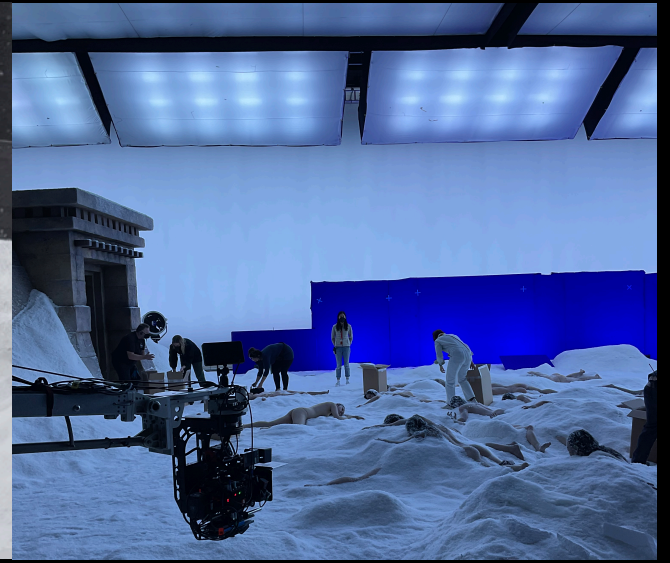
EXT. DEHYDRATORY & REHYDRATION POOLS

Concepts

Shepperton Studios



Still



Concept

On-set



EXT. DEHYDRATORY - SNOWSCAPE

Shepperton Studios



Still



INT. BLACK PALACE - Bull Pen & Da Shi's Office

Whitechapel, London



Concept



INT. JUDGEMENT DAY - FELIX'S CABIN

Shepperton Studios



Still



EXT. BLACK PALACE





INT. WADE'S OFFICE

Shepperton Studios





VR HEADSET & BOX

Concept - Jack' Rooney's
Headset Box

Uncoated headset in uncoated box



Still



THANK YOU FOR YOUR CONSIDERATION