



Lester Cohen Production Designer
Larry Brown Art Director
Keri Lederman Set Decorator
Ashley Waldron Graphic Designer
Adam Brustein Motion Graphics

Design Presentation

SMILE



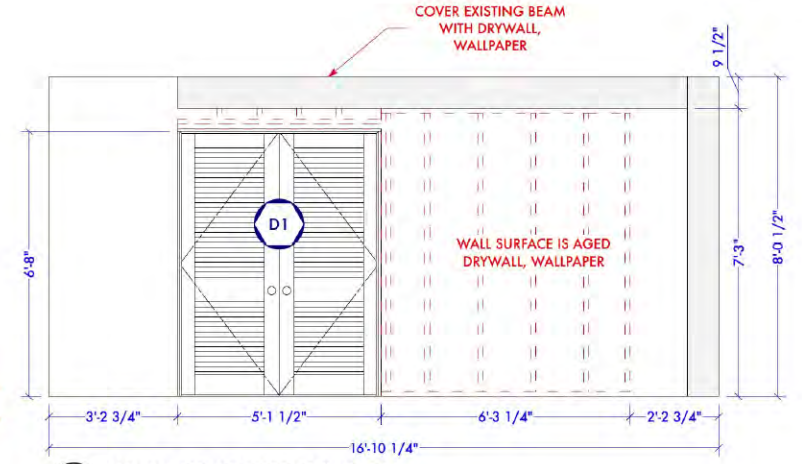
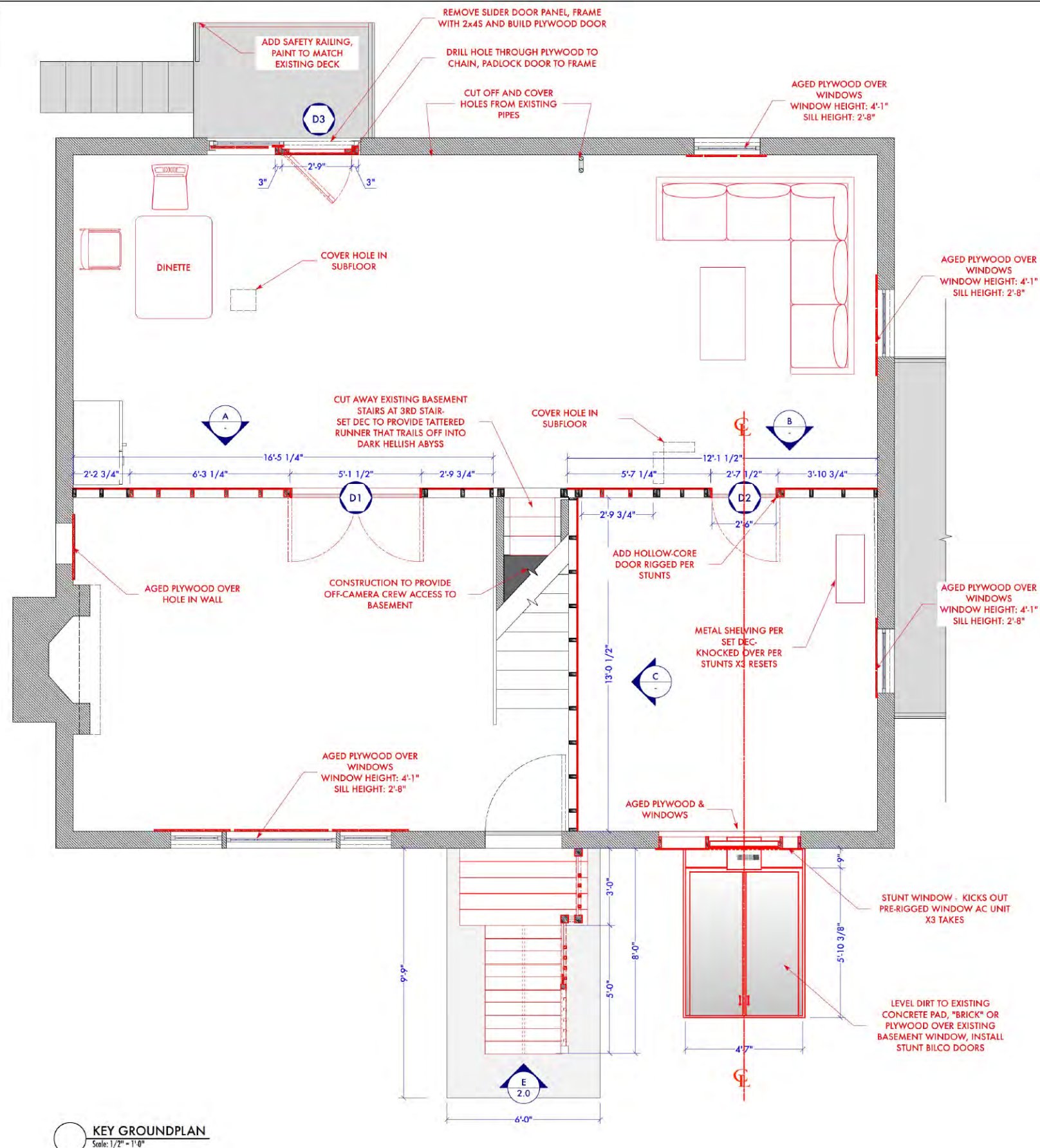
SMILE DELUXE

While still in the lexicon of the SMILE franchise, the sequel to the first film is an allegory about the all consuming nature of fame in our current information environment. The design concept for the film was to have Skye continually surrounded by reflective surfaces so she could never escape herself or the evil entity possessing her.

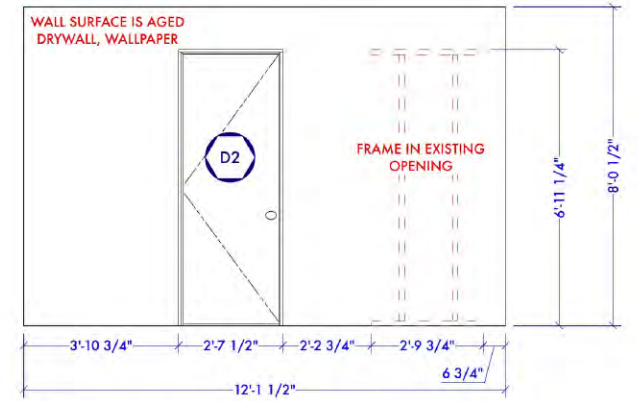


Drop House

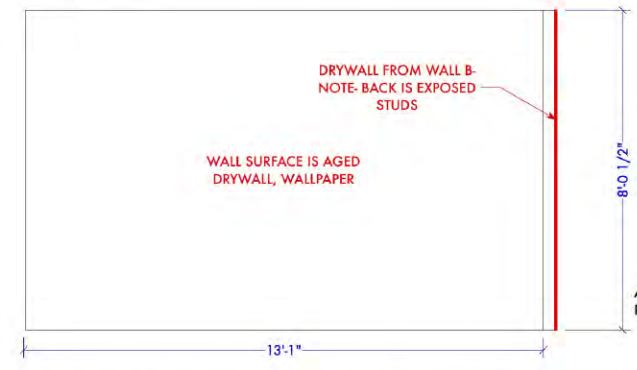
For the seven minute single shot sequence which opens the film, we found an abandoned ranch house that had been gutted by the previous owner. Since it was slated for demolition we were able to build walls and configure the space to suit the blocking.



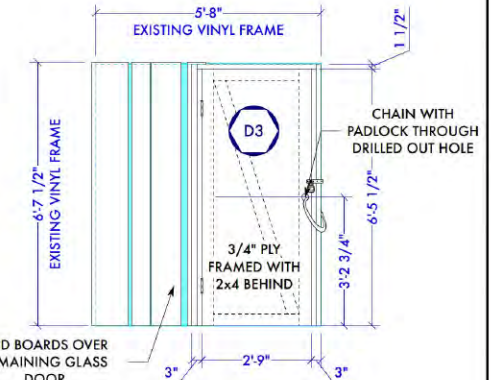
WALL A SCHEMATIC ELEVATION
Scale: 1/2" = 1'-0"



WALL B SCHEMATIC ELEVATION
Scale: 1/2" = 1'-0"



WALL C SCHEMATIC ELEVATION
Scale: 1/2" = 1'-0"



D3 SCHEMATIC ELEV.
Scale: 1/2" = 1'-0"

DOOR SCHEDULE:				
	SIZE	FINISH	CASING	HARDWARE
DOOR 1	2 @ 2'-6"x 6'-8" x 1 3/8"	-PAINT, TEXTURE ETC?	-NO CASING TRIM -DOOR STOP- L197	-PASSAGE KNOBS -2 HINGES PER DOOR- 4 TOTAL
DOOR 2 X3 RESETS	2'-0"x 6'-10"x 1 3/8"	STAINED LUAN	-NO CASING TRIM -DOOR STOP- L197	-PASSAGE KNOB -2 HINGES (EXTRAS PER STUNTS)
DOOR 3	2'-9"x 6'-5"x 2 1/4"	AGED PLYWOOD	-2X4 FRAMING	-HOLE W/ CHAIN, PADLOCK -2 HINGES

KEY GROUNDPLAN
Scale: 1/2" = 1'-0"

DIRECTOR: PARKER FINN
PRODUCTION DESIGNER: LESTER COHEN
ART DIRECTOR: LARRY BROWN
SET DECORATOR: KERI LEDERMAN

DRAWING: LOCATION WORK PLAN
SET NAME: INT. DROP HOUSE
SET LOCATION: 11 Appleblossom Ln, Wappingers Falls, NY 12590

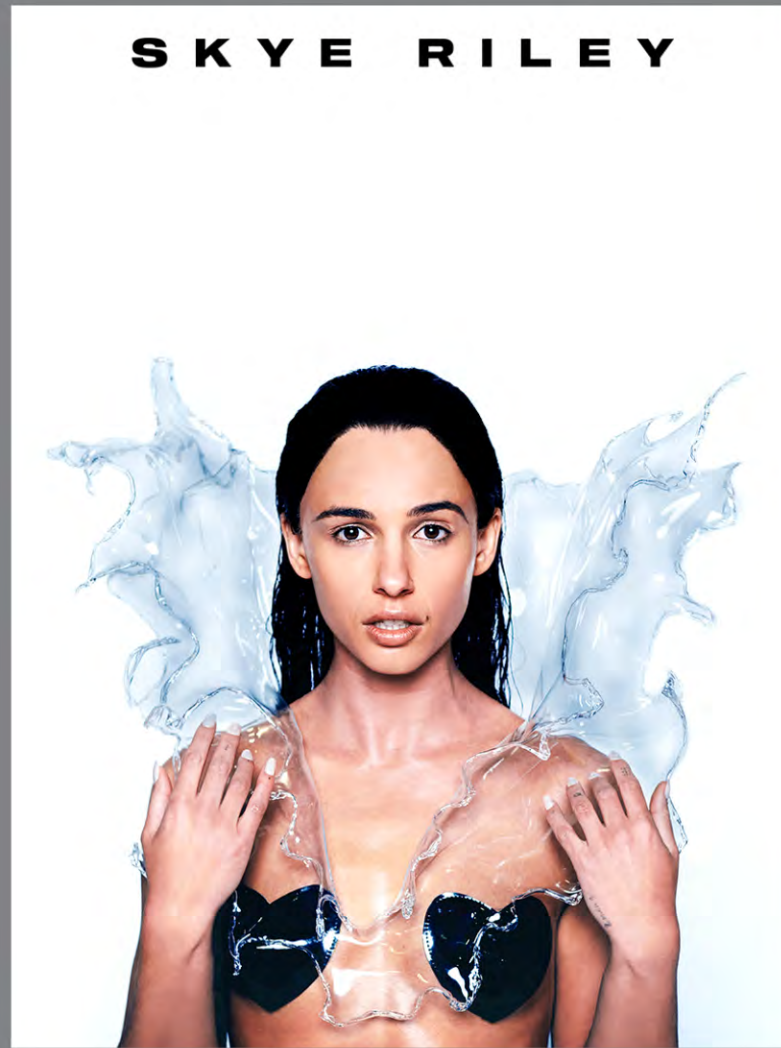
SCALE: AS NOTED
DATE: 12.19.23
REVISOR: -
DRAWN BY: AC

PLATE: 1.0
SET #: 201

Branding

In order to make Skye believable as an international pop star, we had to make her into a brand. This included not only album art, but magazine covers, and tour merchandising.

SKYE RILEY



SKYE RILEY

Skye Riley

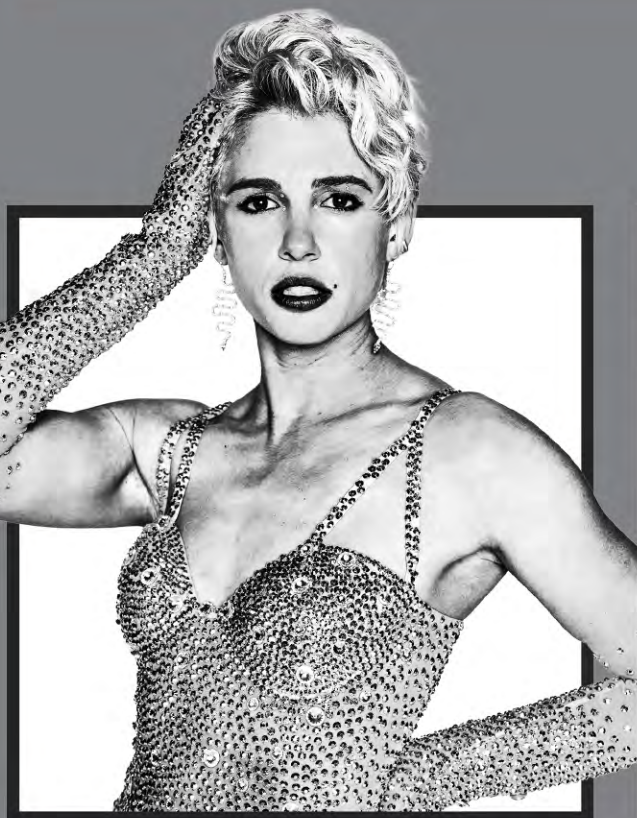
TOO MUCH FOR ONE HEART
WORLD TOUR

DELUXE

NORTH AMERICA		EUROPE & ASIA	
NEW YORK, NY 11/03	LOS ANGELES, CA 12/07	EDINBURGH, SCT 2/07	LYON, FR 3/24
FOXBOROUGH, MA 11/06	VANCOUVER, BC 12/10	GLASGOW, UK 2/15	LISBON, PT 3/29
PHILADELPHIA, PA 11/10	SEATTLE, WA 12/16	BIRMINGHAM, UK 2/21	MADRID, SP 3/31
NASHVILLE, TN 11/13	DENVER, CO 12/18	LIVERPOOL, UK 2/23	MUNICH, GER 4/05
ATLANTA, GA 11/16	KANSAS CITY, MO 1/06	LONDON, UK 3/04	BERLIN, GER 4/07
HOUSTON, TX 11/20	CINCINNATI, OH 1/08	AMSTERDAM, NL 3/07	HAMBURG, GER 4/12
MIAMI, FL 11/23	MINNEAPOLIS, MN 1/10	ZURICH, CH 3/09	SINGAPORE, SG 4/21
TAMPA, FL 11/25	DETROIT, MI 1/17	STOCKHOLM, SE 3/14	TOKYO, JP 4/29
TORONTO, ON 11/29	CHICAGO, IL 1/19	MILAN, IT 3/18	MELBOURNE, AU 5/04
MONTREAL, QB 12/01	WINNIPEG, MB 1/24	PARIS, FR 3/22	SYDNEY, AU 5/06



PARENTAL ADVISORY EXPLICIT CONTENT



Skye Riley

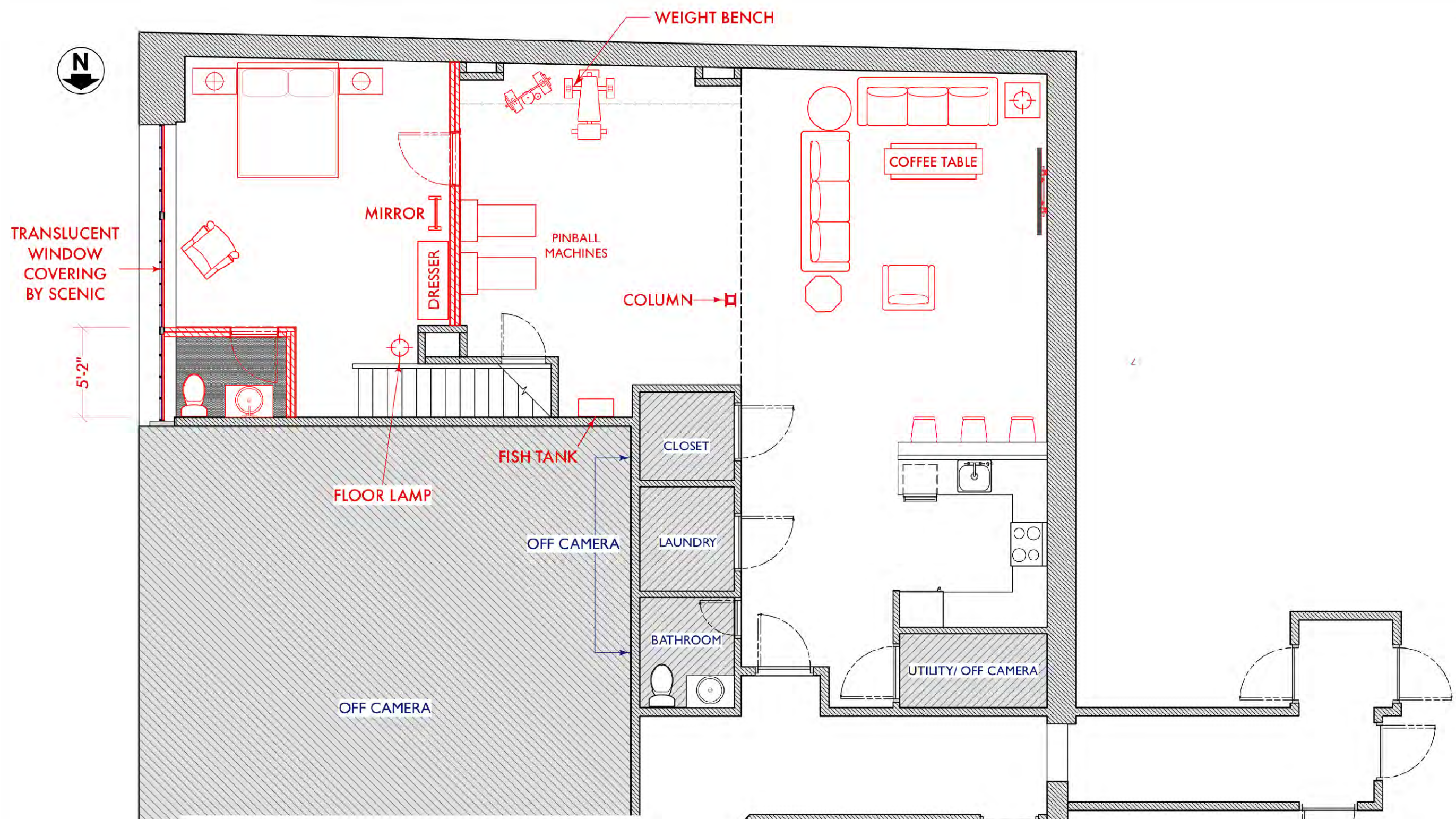




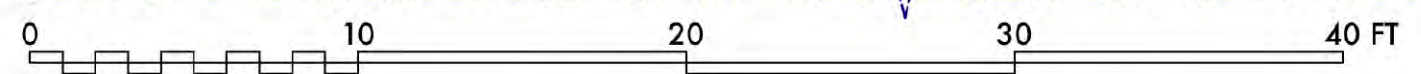
Lewis' Loft

For Lewis we built out an empty loft and decorated as a man-child drug dealer paradise that quickly becomes a nightmare.





DP DIRECTOR PLAN- INT. LEWIS' APARTMENT
 Scale: 3/16" = 1'-0"



	DIRECTOR: PARKER FINN	SET NAME: INT. LEWIS APARTMENT SCENE 18, 5*	DATE: 12/18/23	PLATE: DP
	PRODUCTION DESIGNER: LESTER COHEN	SET LOCATION: APT. 421E "THE FOUNDRY" - 43 Edward St, Newburgh, NY 12550	DRAWN BY: AE	SET #: 213



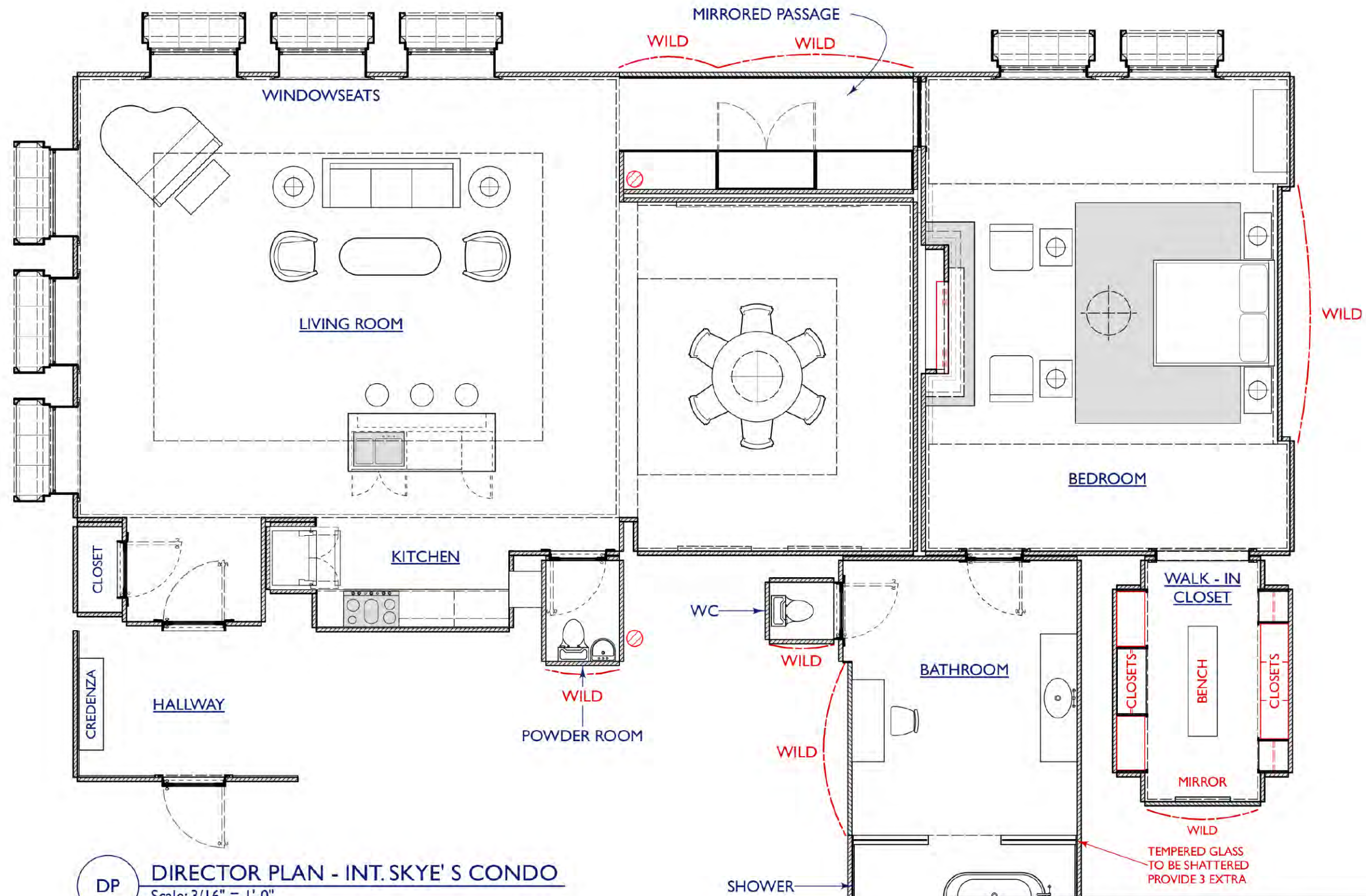
Skye's Apartment

We chose the residential tower of the Woolworth Building for Skye's condo. It is an iconic part of the downtown NYC skyline and the neo-gothic architecture is a nod to classic genre tropes.

The interior was built in our Newburgh, NY studio with a video wall backing using custom plates shot from the 40th floor of the Woolworth building.



Skye's Apartment



DP DIRECTOR PLAN - INT. SKYE'S CONDO
 Scale: 3/16" = 1'-0"



	DIRECTOR: PARKER FINN	SET NAME: INT. SKYE'S CONDO	DATE: 01/16/24	PLATE: DP
	PRODUCTION DESIGNER: LESTER COHEN	SET LOCATION: UMBRA STAGES, STAGE I 9 SCOBIE DRIVE, NEWBURGH, NY 12550	DRAWN BY: AE	SET #: 100



Skye's Dining Room - Rendering



Skye's Living Room - Rendering



Skye's Living Room



Skye's Bedroom



Skye's Bedroom - Rendering



Skye's Bedroom



Skye's Bathroom - Rendering

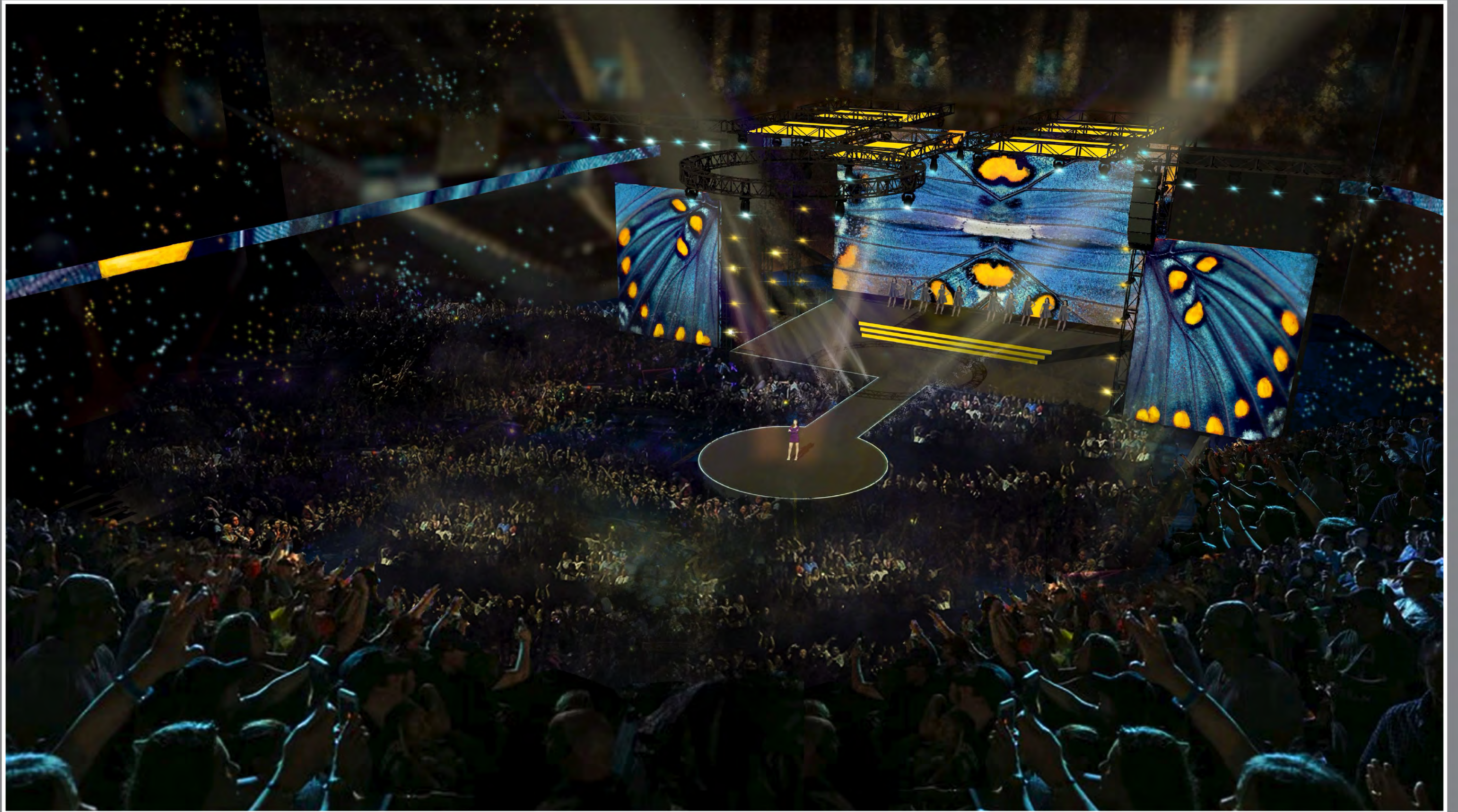


Skye's
Bathroom



Arena Concert

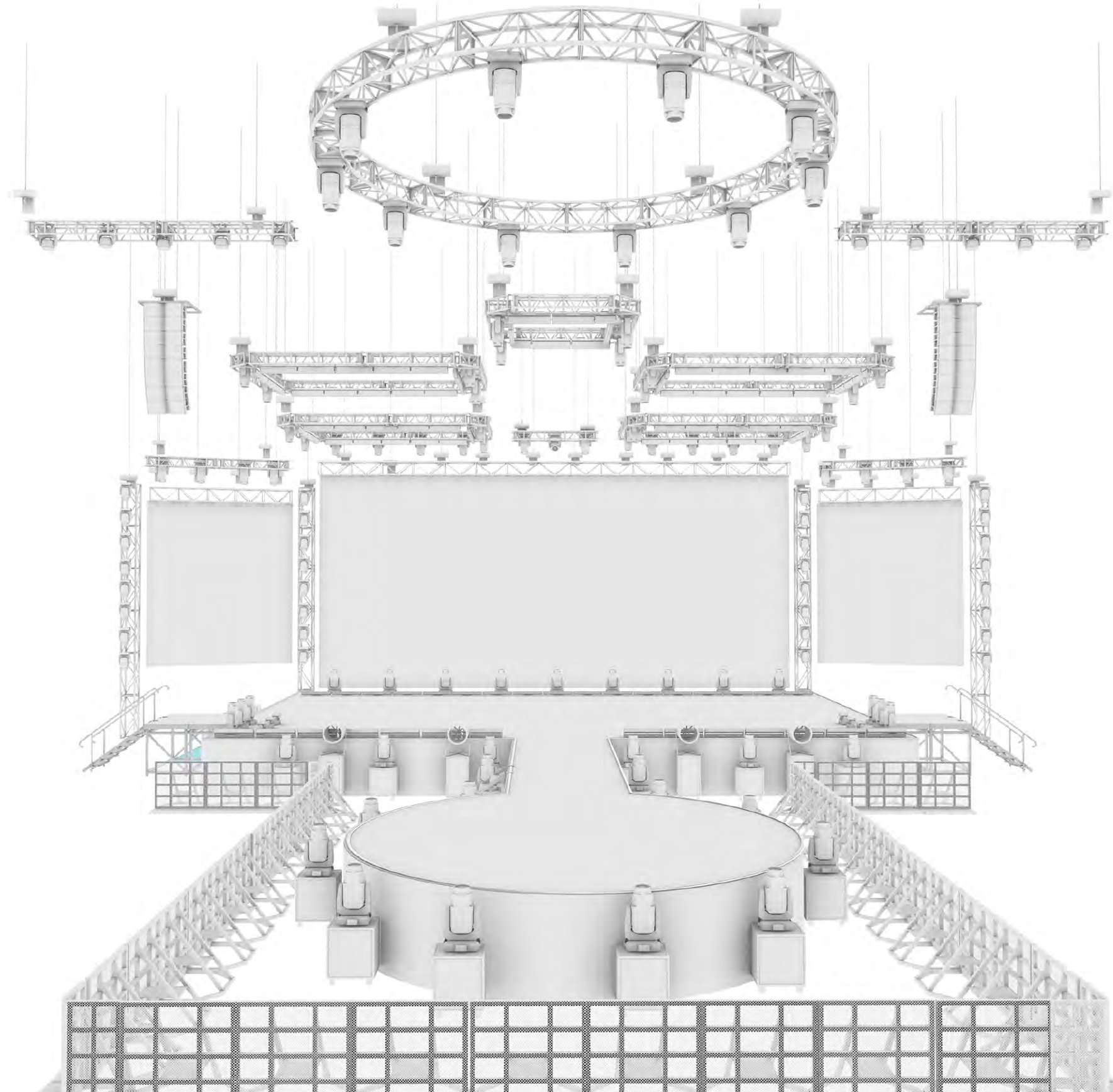
Our story takes place in the days leading up to the launch of Skye Riley's comeback tour. For the concert venue and backstage hallways we used the MVP Arena in Albany to double as a NYC venue. The dressing room was created at our studio.







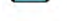




Arena Concert - Rendering



FILMS: 11-16 FEBRUARY 2024



	Robe Robin Forte (Mode 1, 54 Ch) 87.7 lb	71
	Robe MegaPointe (Mode 1, 39 Ch) 48.5 lb	36
	Robe Spider (Mode 3, 33 Ch) 29.2 lb	10
	ACME Pixel Line IP (117 Ch Mode) 18.7 lb	17
	Chauvet COLORado PXL Bar 16 (Standard, 84 ch) 45.6 lb	86
	Chauvet COLORado PXL Bar 8 (Standard, 51ch) 25.2 lb	12
	Chauvet Color Strike M (24 Ch Mode) 26.2 lb	6
	Robe BMFL Washbeam (Standard, 48 Ch Mode) 64.7 lb	18
	Robe Robin Forte FS (Mode 2, 56 Ch) 93.1 lb	2

Control via GrandMA2 Fullsize Plus Spare

Include All NPU / Node / NSP Necessary For Running All Fixtures In Maximum Mode

Need Parameter Count For Stage Line LED Being Supplied By Other Vendors.

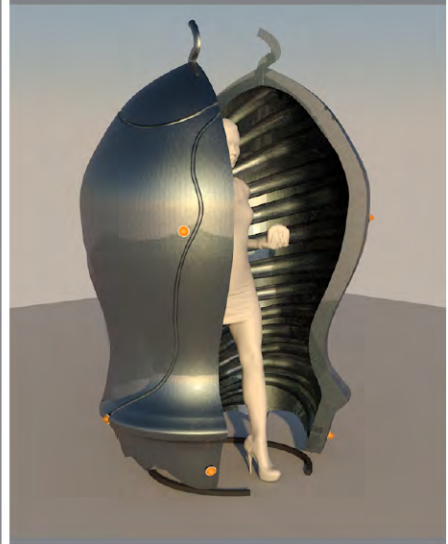
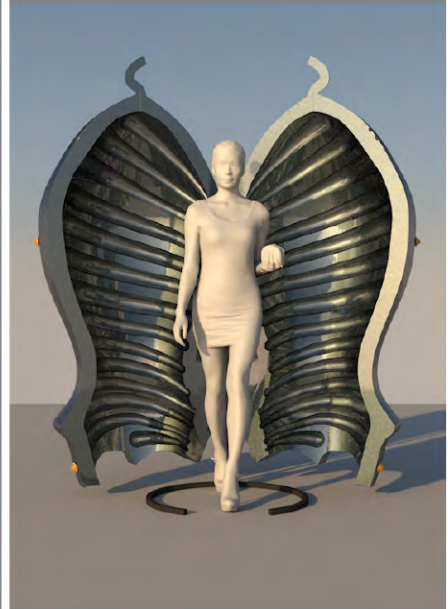
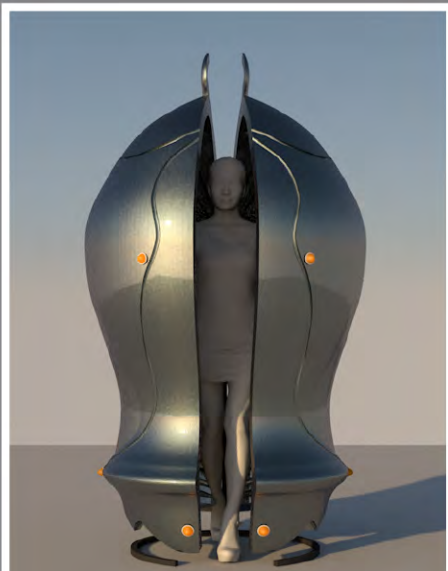
All Lighting Truss With Fixtures to be Pre-Rig For Time Efficiency, All Fixtures to Be Cabled, Addressed And Tested Offsite

Preference for General Haze via 3 x MDG Atmosphere (SL / SR FOH)

SHOW.1 OVERVIEW

v10.0
STAGE MOVE 16'
OFF WALL
VERSION

5 February 2024
RELEASE DATE

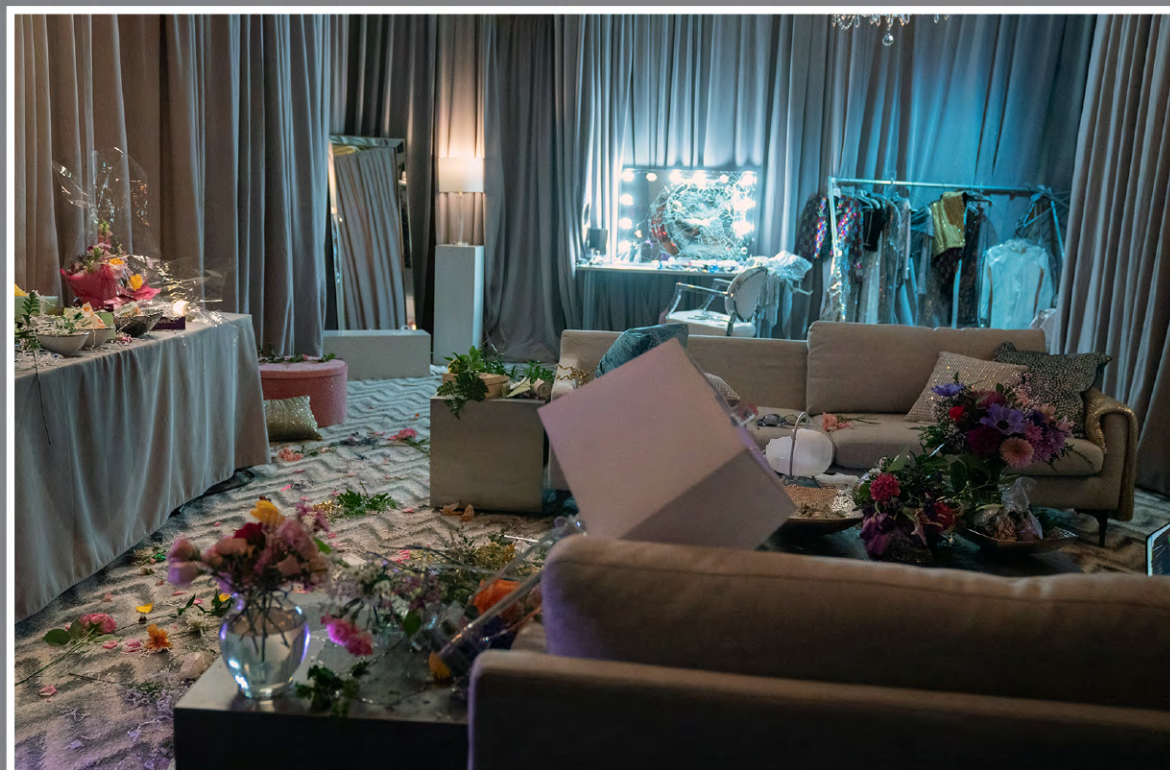


Concert Pod



Backstage

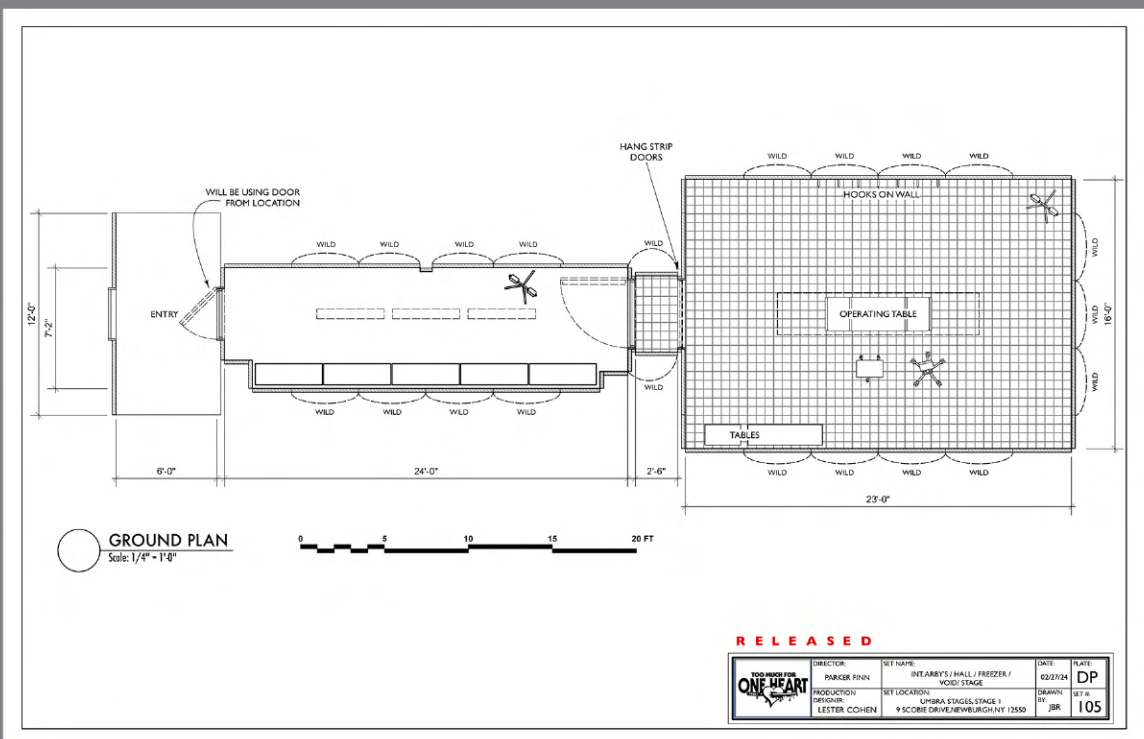
Arena Dressing Room





Pizza Hut

The penultimate heart stopping scene in which Skye attempts to rid herself of the demon takes place in an abandoned Pizza Hut. We dressed an empty restaurant in Ellenville NY as the exterior and built the interior of the freezer in the studio.



Pizza Hut



SMILE

Lester Cohen	Production Designer
Larry Brown	Art Director
Keri Lederman	Set Decorator
Ashley Waldron	Graphic Designer
Adam Brustein	Motion Graphics