

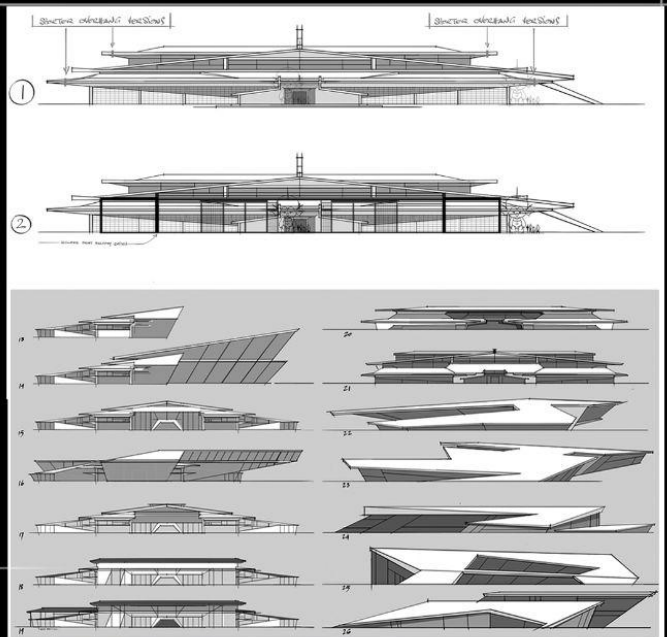
ULTRAMAN

RISING

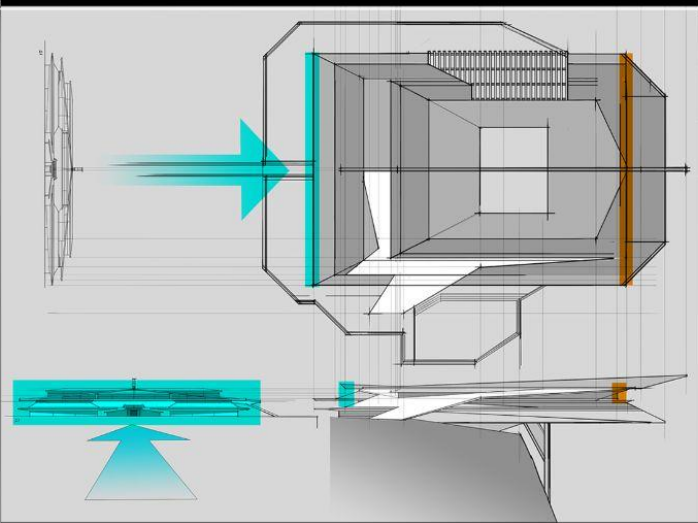


2024 ADG AWARDS SUBMISSION
PRODUCTION DESIGN: MARCOS MATEU-MESTRE

ART DIRECTION: SUNMIN INN



MARCOS MATEO 2010



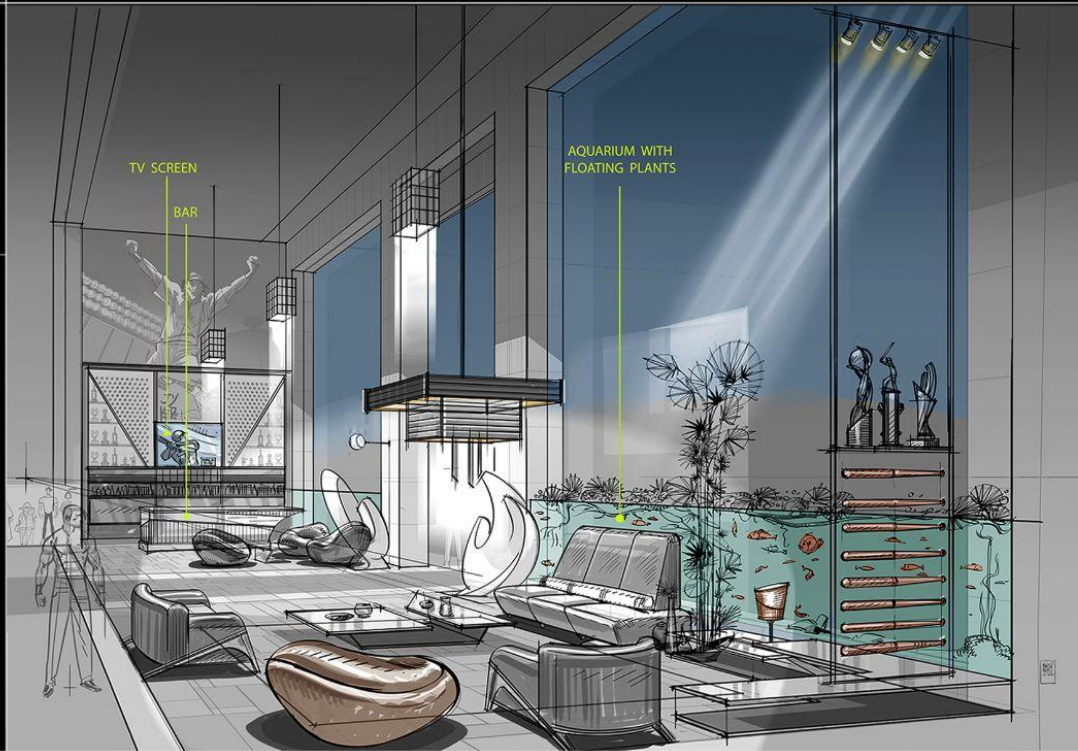
KEN
SATO'S
HOME



-TOWARDS FOYER



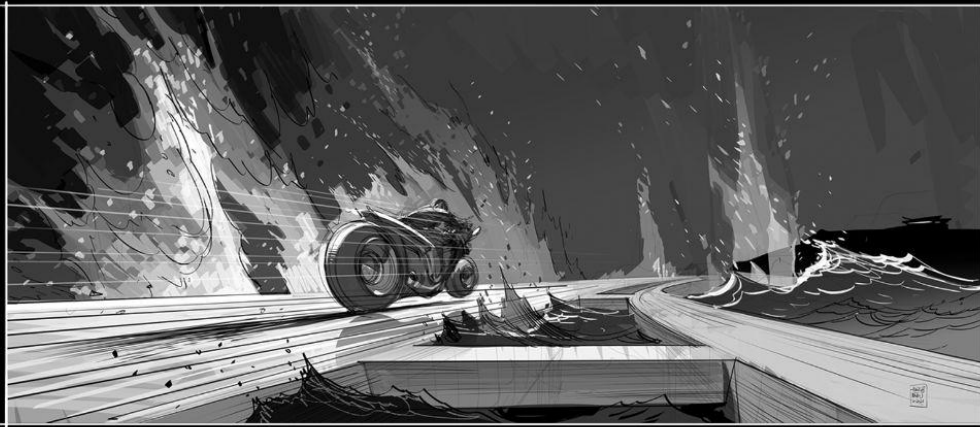
KEN'S BEDROOM



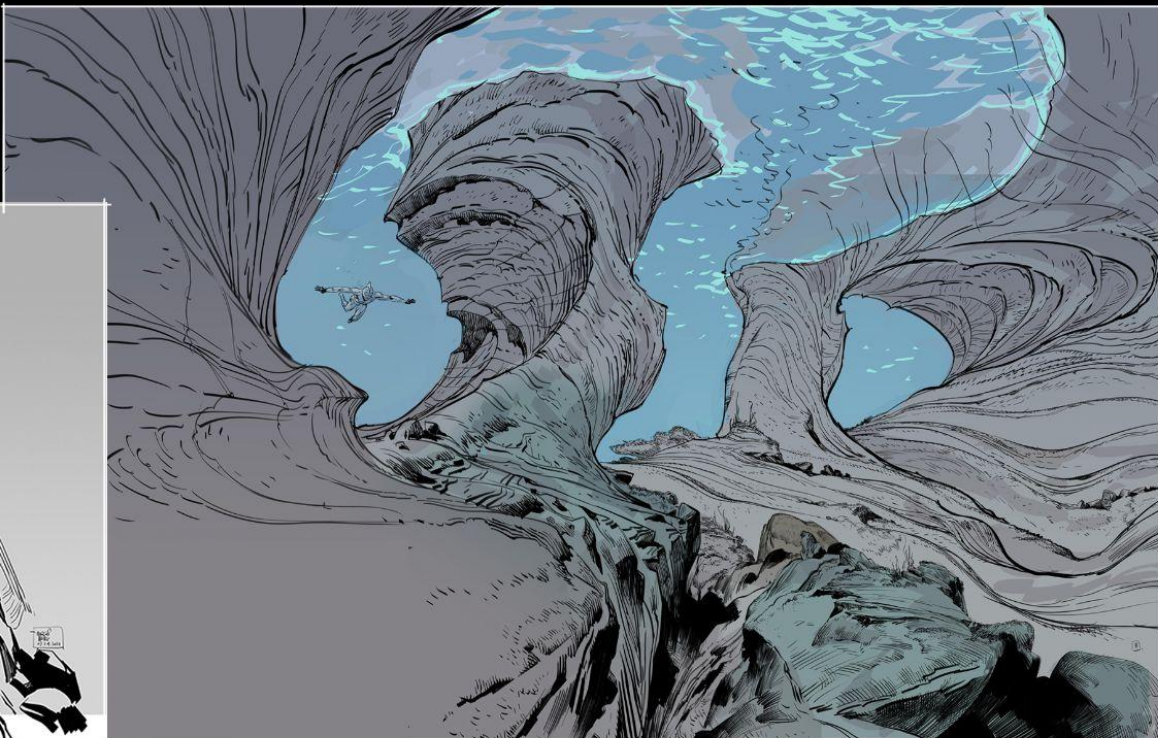
TV SCREEN

BAR

AQUARIUM WITH
FLOATING PLANTS

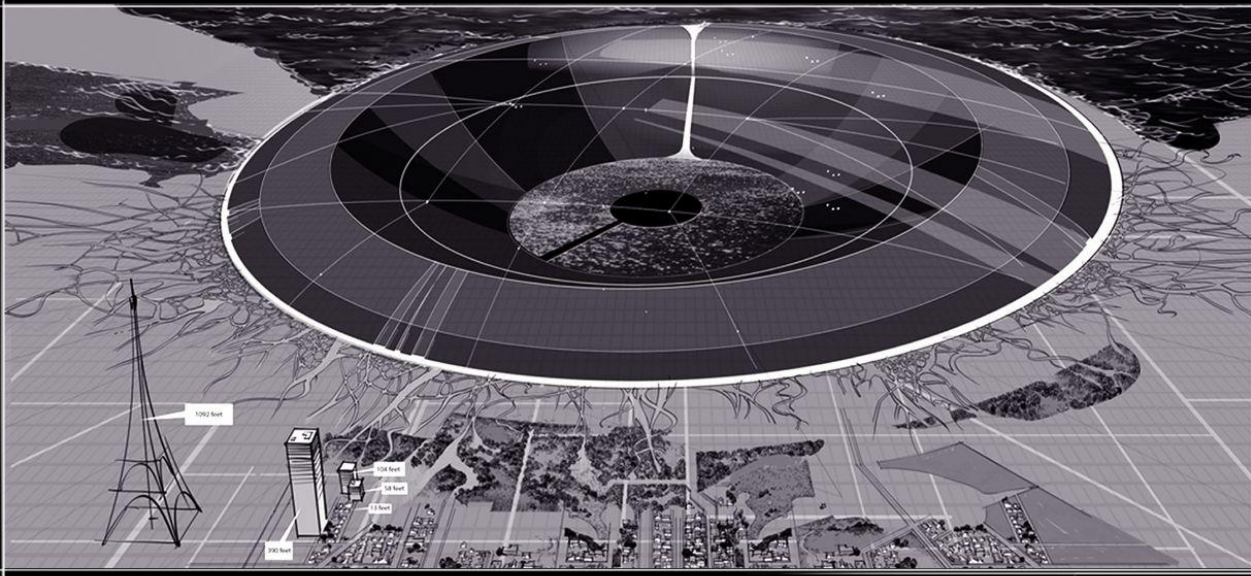


—KEN SATO'S ISLAND

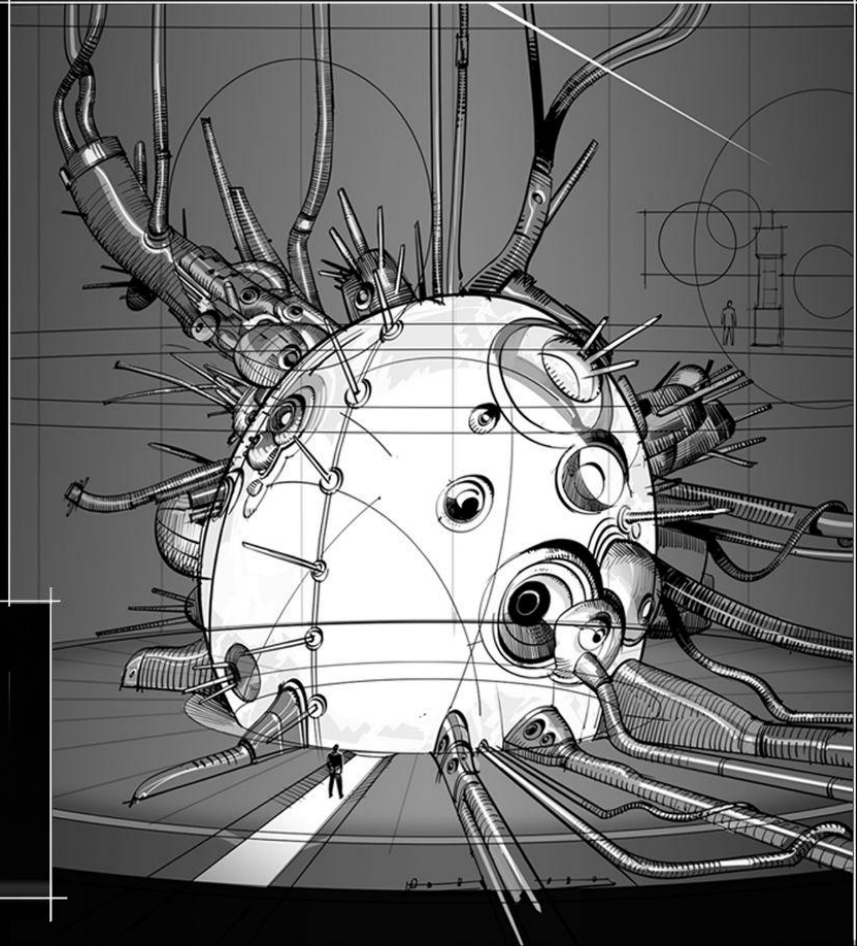


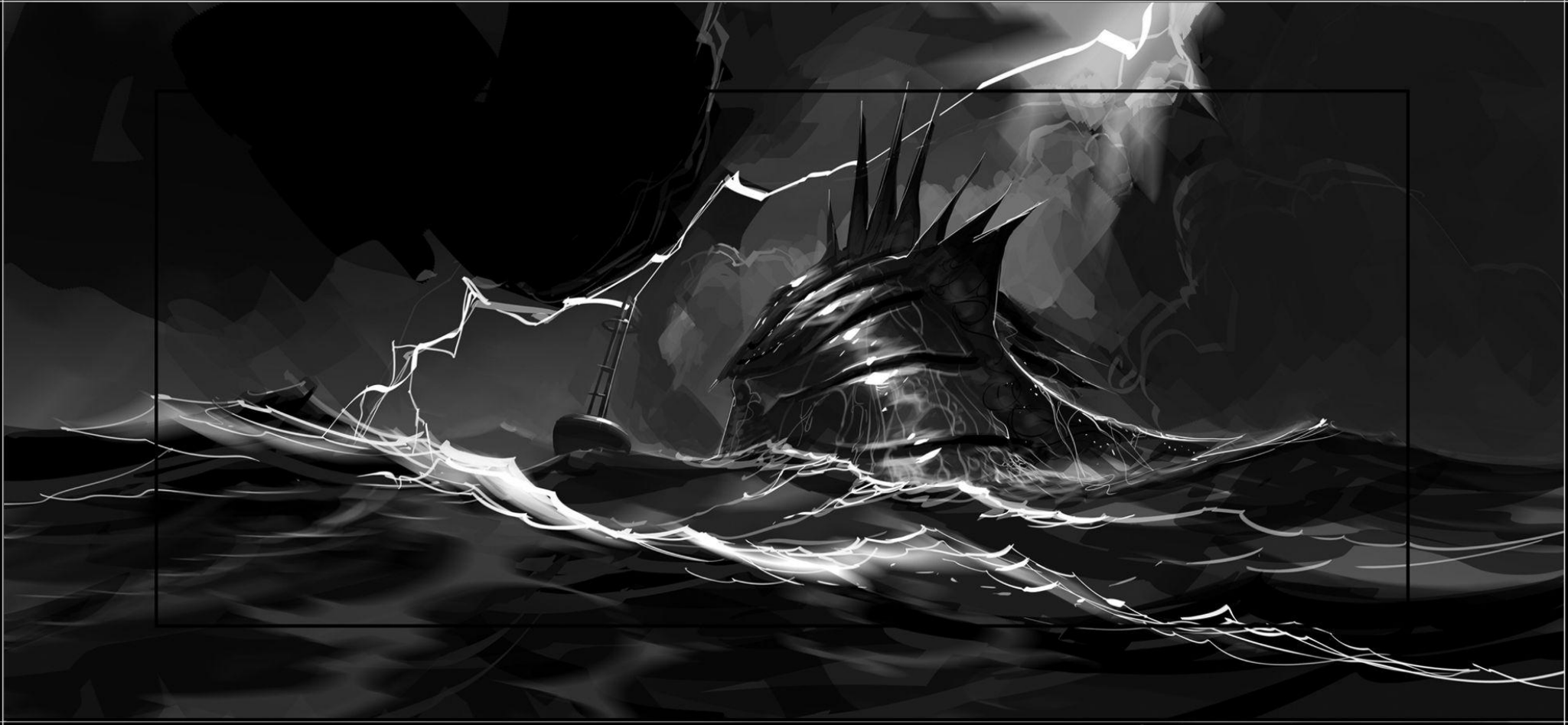
THE CITY OF TOKYO





DR. ONDA'S
KAIJU DEFENSE FORCE





— LIGHTING KEYS





CHARACTER SPECIFIC RULES ULTRAMAN

NOT CROSS HATCHING
BASED IN TEXTURE INDICATING BRUSH METAL FOR SCALE

BANDING
DARK LIGHT DARK LIGHT WITH STRONG TERMINATOR INDICATION!
GLASSY ITEMS TERMINATORS ARE CRUCIAL FOR OUR STYLE AS TO NOT LOOK BARE & SIMPLE

EARS
HUMAN EARS MUST BE DARKER WITH LOCAL COLOR, BECAUSE HUMAN EARS TAKE LOCAL BEING SAME COLOR DEEPER WHERE THERE IS A SHADOW BUT THERE IS A DARKER LOCAL COLOR TO THE FACE!
FRAMED BETTER

RED & WHITE
RED AREA HAS A HIGH ROUND SHINE & LOW SHARP WHITE LINE TO SHOW CHANGE QUANTITY OF RED PATTERNING
WHITE IS ELONGATED FOR EAR AREA, MORE WHITE THAN CLOSE UP

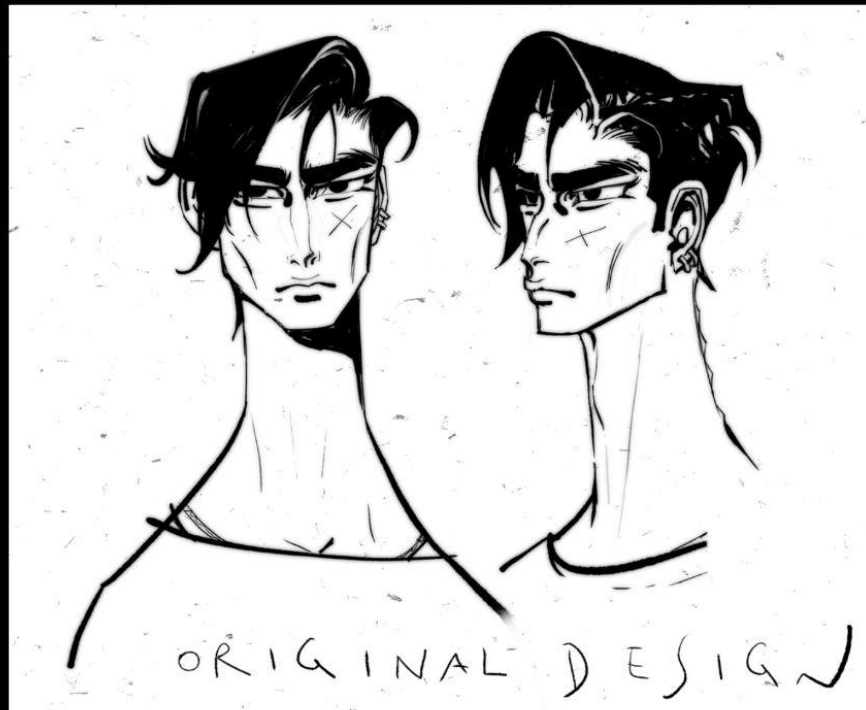
FASCET RIMS
ALL FASCETS EMPHASIZED WITH LIGHT RIMS TO HELP SCALE

GRIMY TEXTURE
ROMANTIC TREE FROM ABOVE STOCK
WILL SEND FULL SIZE DOCUMENT AS SUPPLEMENT
MATTE

NO DIMENSION, JUST FLAT TEXTURE THAT APPEARS MORE IN SHADOW

IN THE SAME LINE
(UNDER NOSE (MOUTH TOP AREA)
UNDER AB KNUCKLES UNDER
ARMHOLE METAL AREA SHARP LOCALLY
BE SMOOTH DARKENED TO FLAT FORM)

BANDING TERMINATOR LINES NEED LONG HORIZONTALS & CONSISTENT WITH HUMAN CHARACTERS



CHARACTER SPECIFIC RULES EMI SATO

TOE & CLAW NAILS
NAIL OF TAIL EDGES OF FINGER SKIN ARE DARKENED LIKE SOME SCALES
NAIL TIP DETAILS ARE BASED IN ASH GREEN ADDED TO TIP

SCALE DETAILS
SAVE INTERNAL LINES SHINE IN LIGHT ONLY
10% SCALES RANDOMLY
HAVE DARKER EDGES (LOCAL)
THOSE SCALES HAVE A THIN LINE UNDER THEM

WEBBING
ALL WEBBING WILL HAVE INDICATION OF THE EXPOSED EMI LOOK, BUT VERY SUBTLE
MUST BE EMPHASIZED MORE AS SHE IS MUCH LARGER THAN HUMANS

OCCUSION

ADDED STOMACH TEXTURE, SIMILAR TO WEBBING TEX



CHARACTER SPECIFIC RULES AMI WAKITA

OVERALL SUIT TEXTURE
MAY NEED TO SAVE DEPENDING ON GENE TO CAMERA

ZIPPER LINE TEX

ZIPPER PULL TEX
GENERALLY WITH POSTERIZATION, ITS JUST CRATERED VALVES WITH LITTLE TO NO GRAM

LEATHER TEXTURE
FOR THIER SHAPES ON SHIRT, THE SHAPES WILL BE MORE SPECULAR THAN REST OF SHIRT

NEW BROWS
UNITED INTO A BLOCK WITH DETAILS AT FRONT & END

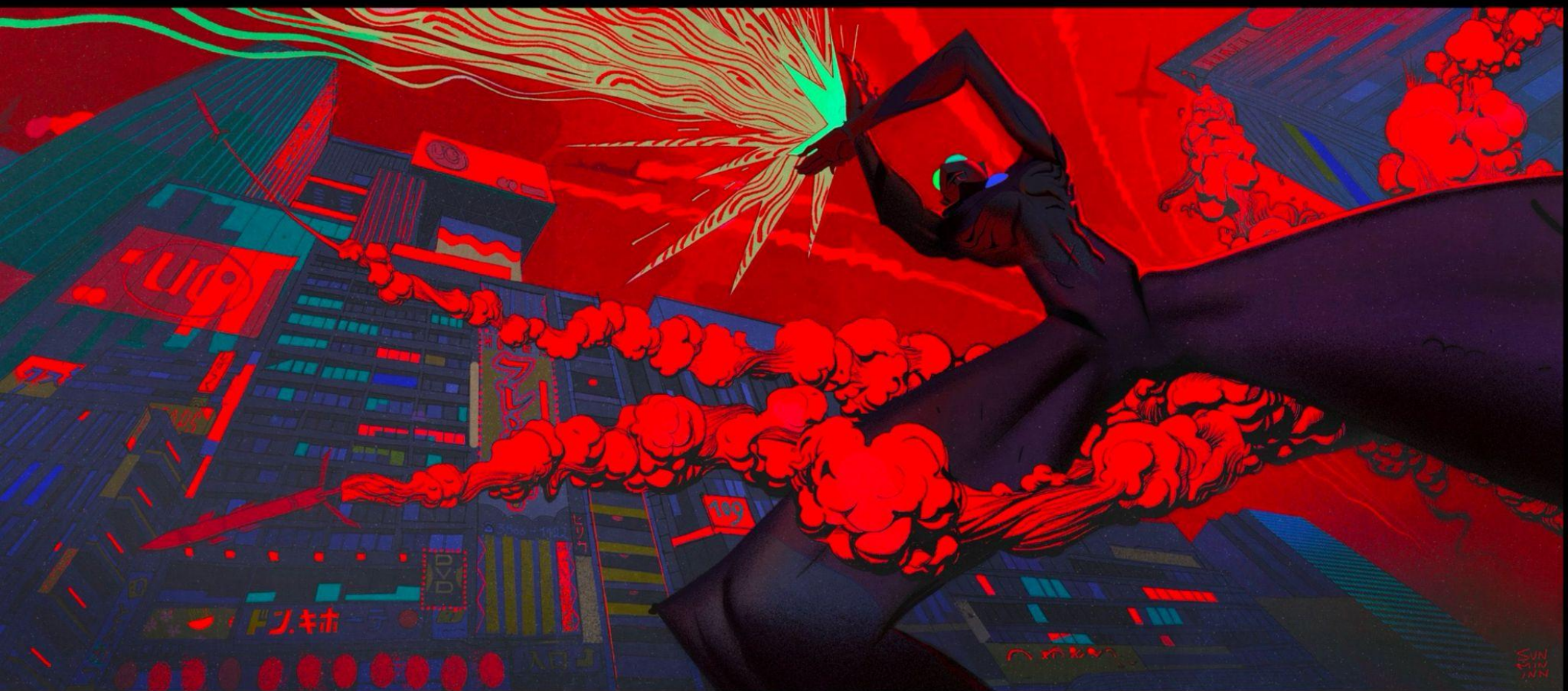
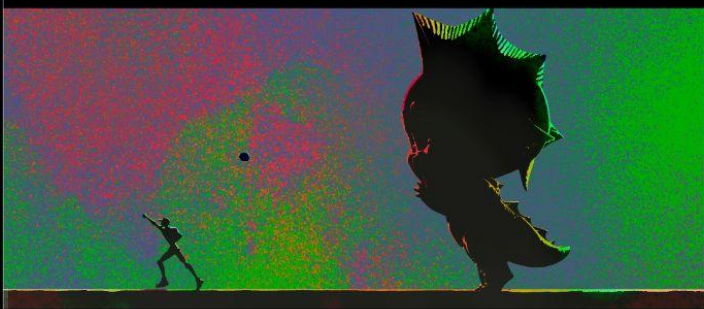
PREVIOUS FRAME DETAIL
TICKS AND FORM ADDED IN

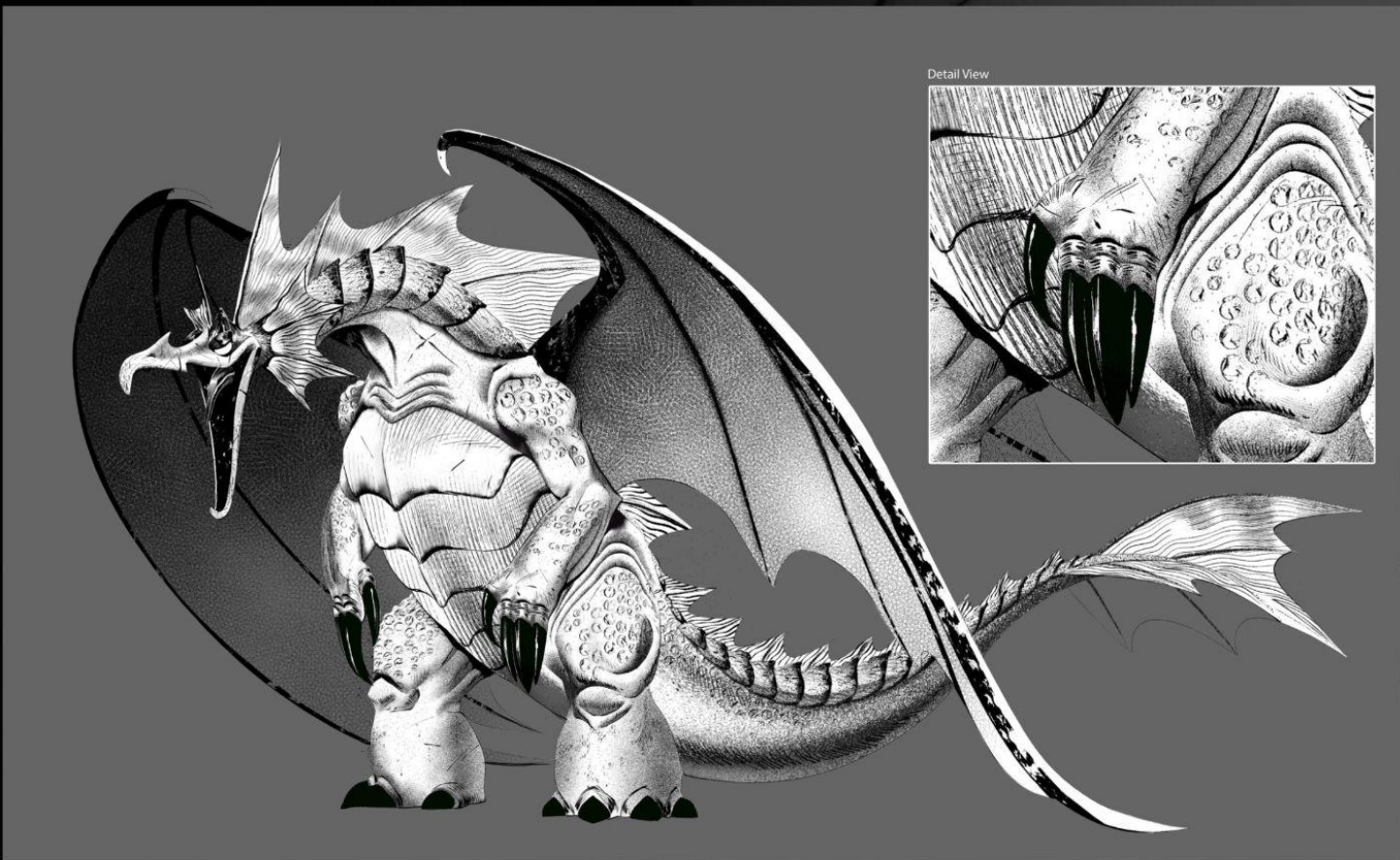
HAIR
HIGHER GLOSS AT TOP
LESS GLOSS & DENIM AT BOTTOM

LIP & UNDER NOSE LINED
SUBTLE

9.06





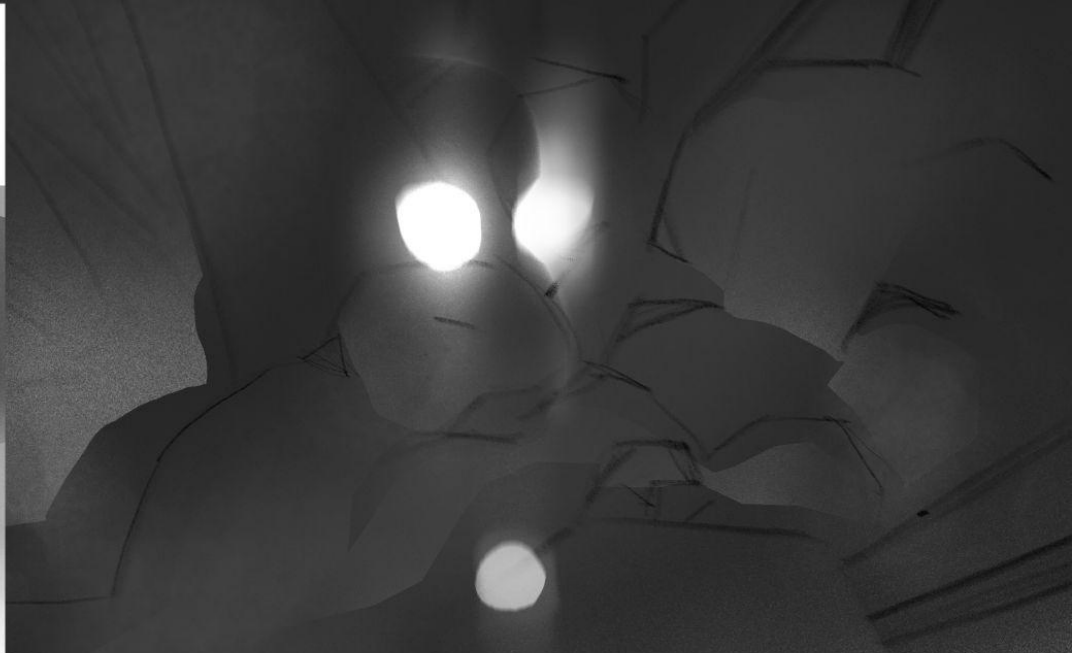
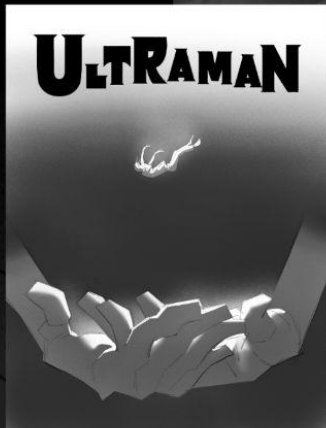
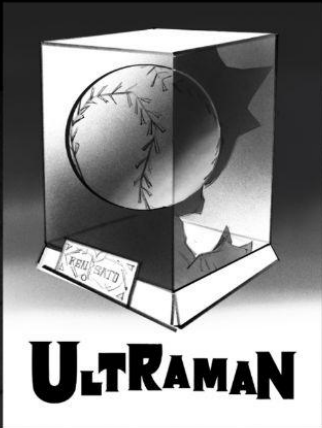
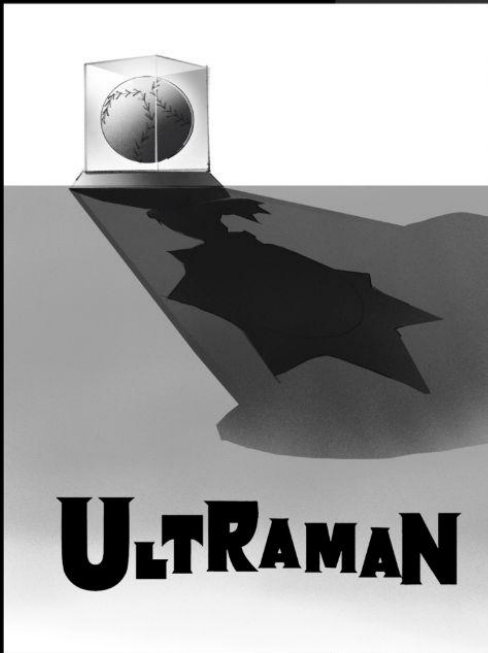
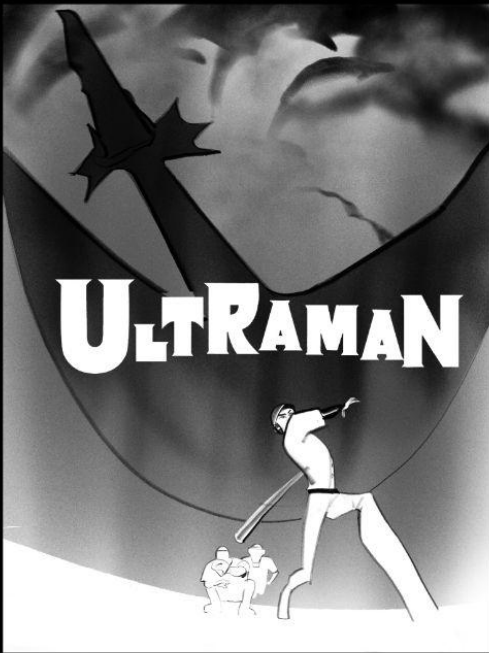




Color Key 3000 - 0320
Artist(s) Sunman Inn
Date 2022-01-24



Sad rain noises intensifies



OG



PO



REF



ORIGINAL



P.O



- SIMILAR ATMOSPHERE TO "REF" ABOVE BUT SLIGHTLY BRIGHTER AT HOMEPAGE
- BRIGHT LIGHT COMING FROM TOP LEFT CORNER TO MATCH LIGHT DIRECTION ON CHARACTERS
- STRONGER SHADOWS & HIGHLIGHTS ON ALL MAIN CHARACTERS IN SHOT.

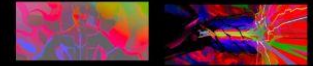
4400-0700 OG



EMI 1 ↓ PAINTOVER



- DARKENING EDGES OF LEDGE & SHADOW SIDE OF KEN & EMI WHEN CLOSE + RIM LIGHTS!
- EMI 2 ↓ FG ↓ BG
- ALL BG VALUES SHOULD LIFT WITH ADDED MIST ON WATERS EDGE.
- DARKEN CLIFF SIDE WATERS EDGE BY LIFTING VALUE OR ADDING MIST



OG



PAINTOVER



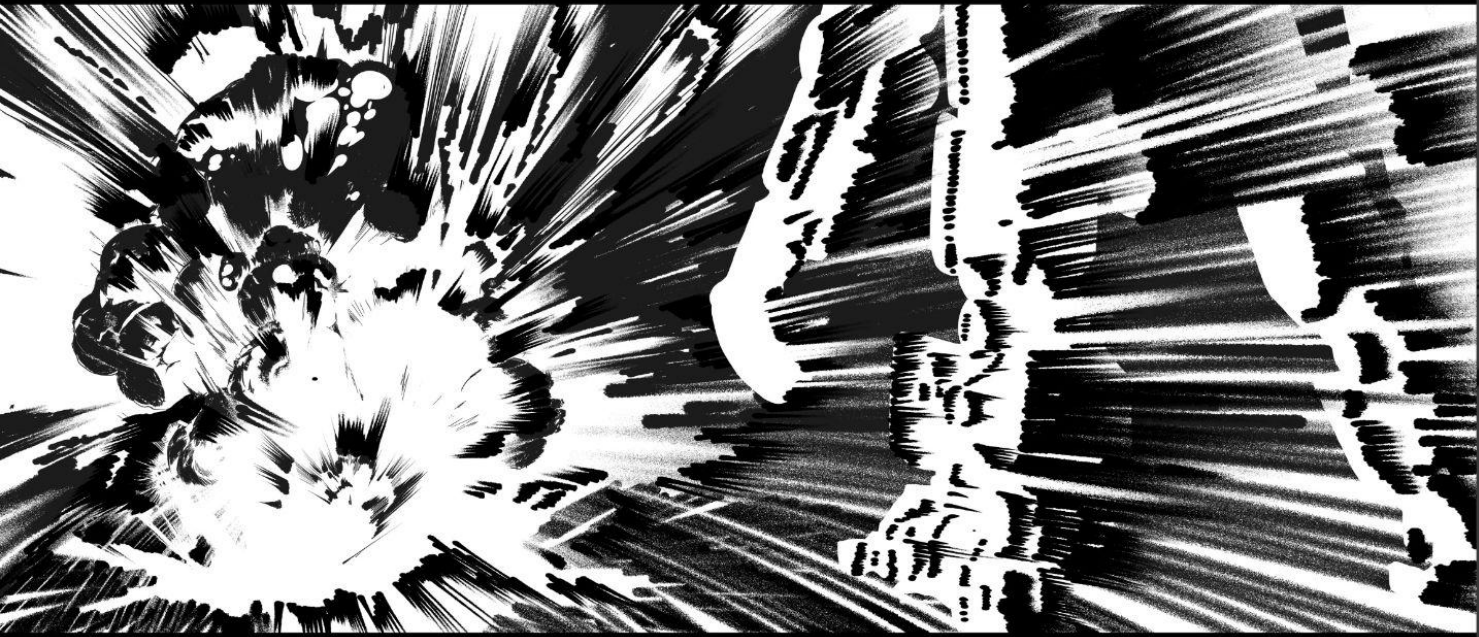
- ALMOST 2 TONED.
- LIGHTSIDE → WHITE
- SHADOWSIDE → SPECTRUM OF COLORS
- VERY GRAPHIC SHADOWS
- SPECTRUM OF COLORS WOULD SHIFT RAPIDLY



Impact Frames
Artist(s) Sunmin Inn
Date: 2022-03-25



Impact Frames
Artist(s) Sunmin Inn
Date: 2022-03-25



ULTRAMAN
NETFLIX



