

JOKER

FOLIE À DEUX

FOR YOUR CONSIDERATION

BEST PRODUCTION DESIGN

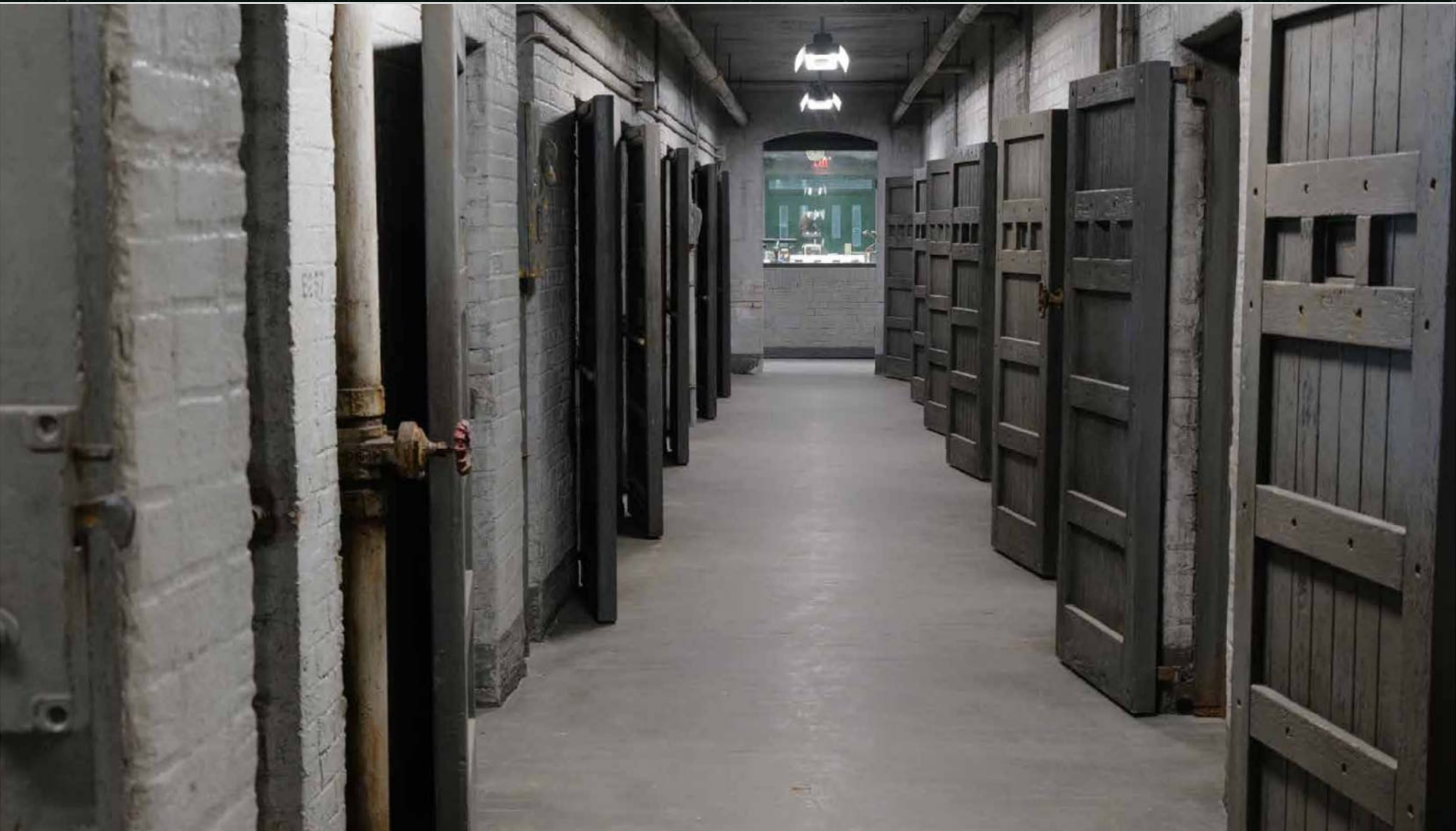
PRODUCTION DESIGNER
MARK FRIEDBERG

SET DECORATOR
KAREN O'HARA



E WARD

E WARD CELL BLOCK



STILL PHOTO

E WARD CELL BLOCK



STILL PHOTO

E WARD CELL BLOCK



IMAGE FROM THE FILM

CONCEPT ART

**PORTAL FROM
MAXIMUM TO MIMIMUM**

PORTAL FROM MAXIMUM TO MINIMUM



STILL PHOTO

PORTAL FROM MAXIMUM TO MINIMUM



STILL PHOTO

PORTAL FROM MAXIMUM TO MINIMUM



IMAGE FROM THE FILM

CONCEPT ART

PORTAL FROM MAXIMUM TO MINIMUM



IMAGE FROM THE FILM

CONCEPT ART

A dark, grainy photograph of a large, multi-story building at night, likely the Arkham State Hospital. The building has many windows, some of which are lit. In the foreground, there is a fence and a paved area. A white rectangular box is overlaid on the center of the image, containing the text "ARKHAM YARD".

ARKHAM YARD

ARKHAM STATE HOSPITAL
1888

ARKHAM YARD



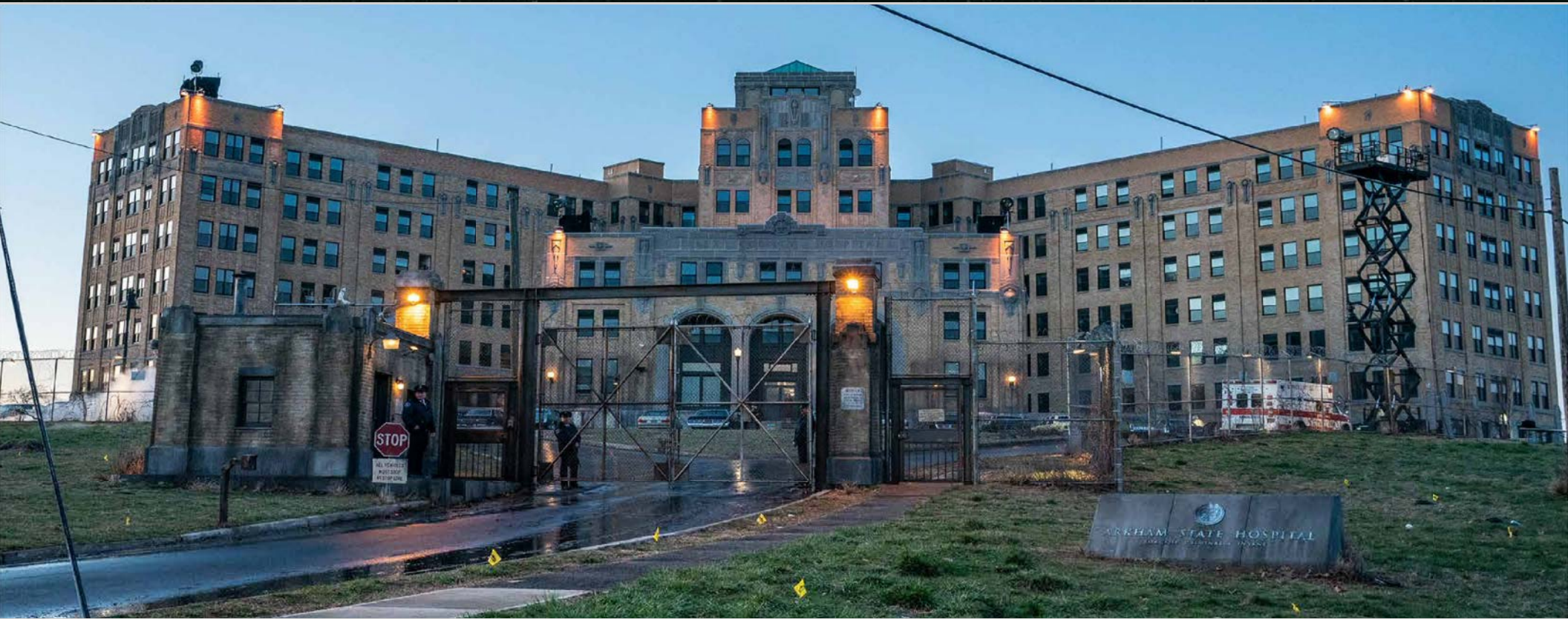
MODEL VIEW

ARKHAM YARD



STILL PHOTO

ARKHAM YARD



STILL PHOTO

ARKHAM YARD



STILL PHOTO

ARKHAM YARD

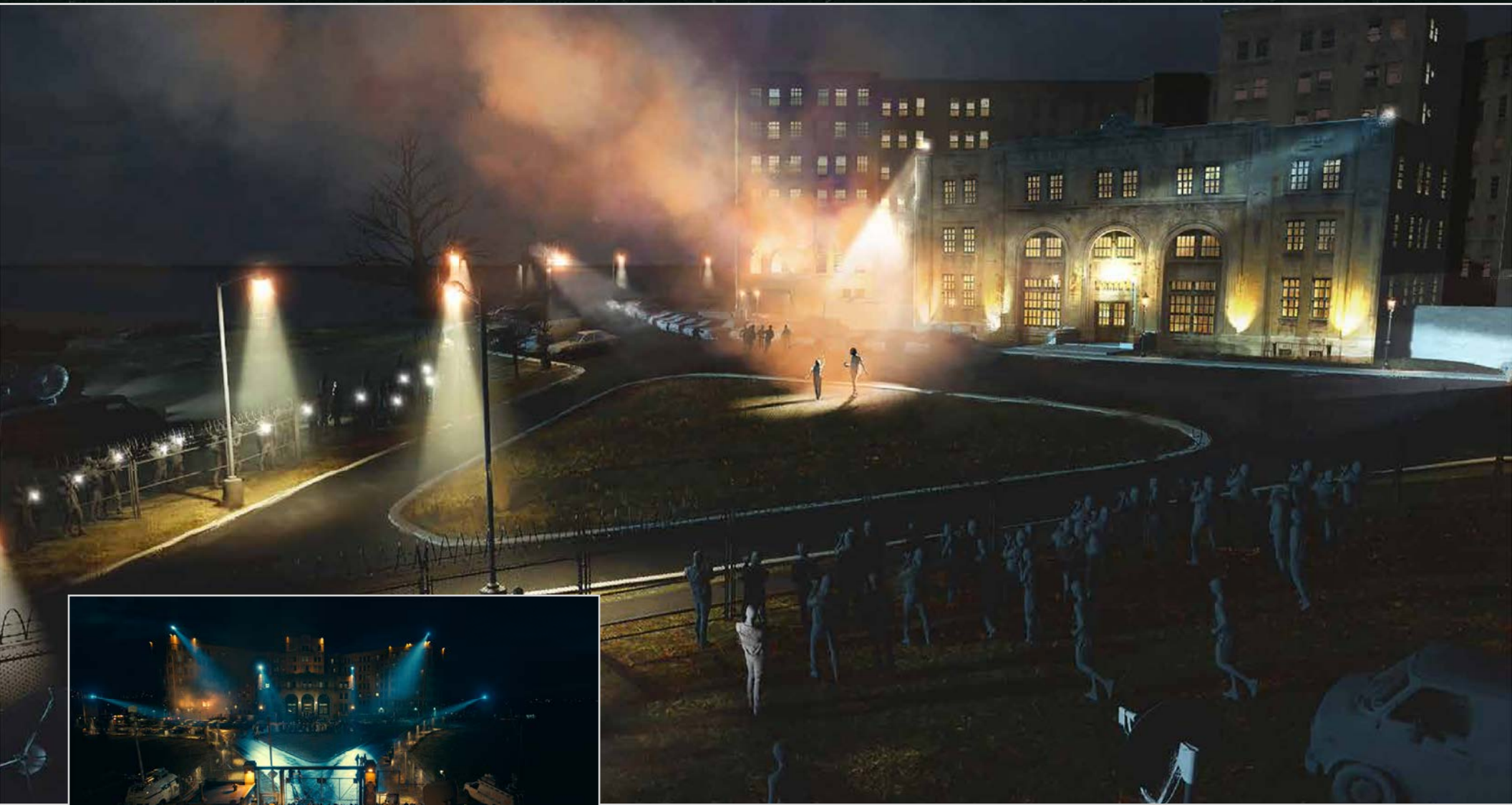


IMAGE FROM THE FILM

CONCEPT ART



COURTROOM

COURTROOM



STILL PHOTO

COURTROOM



STILL PHOTO

COURTROOM



IMAGE FROM THE FILM

CONCEPT ART

COURTROOM



STILL PHOTO



CHAPEL

CHAPEL



STILL PHOTO

CHAPEL



STILL PHOTO

CHAPEL



CONCEPT ART

CHAPEL



IMAGE FROM THE FILM

CONCEPT ART



ROOFTOP

ROOFTOP



STILL PHOTO

ROOFTOP



STILL PHOTO

ROOFTOP



STILL PHOTO

ROOFTOP



CONCEPT ART

ROOFTOP



IMAGE FROM THE FILM

CONCEPT ART

A dark, atmospheric photograph of a stage set. The scene is dimly lit, featuring a series of vertical, light-colored panels or columns that create a sense of depth and structure. In the background, several silhouettes of people are visible, suggesting a performance or rehearsal in progress. The overall mood is mysterious and dramatic. A white horizontal bar is overlaid across the center of the image, containing the text 'JOKER & HARLEY SHOW' in bold, black, sans-serif capital letters.

JOKER & HARLEY SHOW

JOKER & HARLEY SHOW



STILL PHOTO

JOKER & HARLEY SHOW



STILL PHOTO

JOKER & HARLEY SHOW



CONCEPT ART



COURTROOM EXPLOSION

COURTROOM EXPLOSION



STILL PHOTO

COURTROOM EXPLOSION

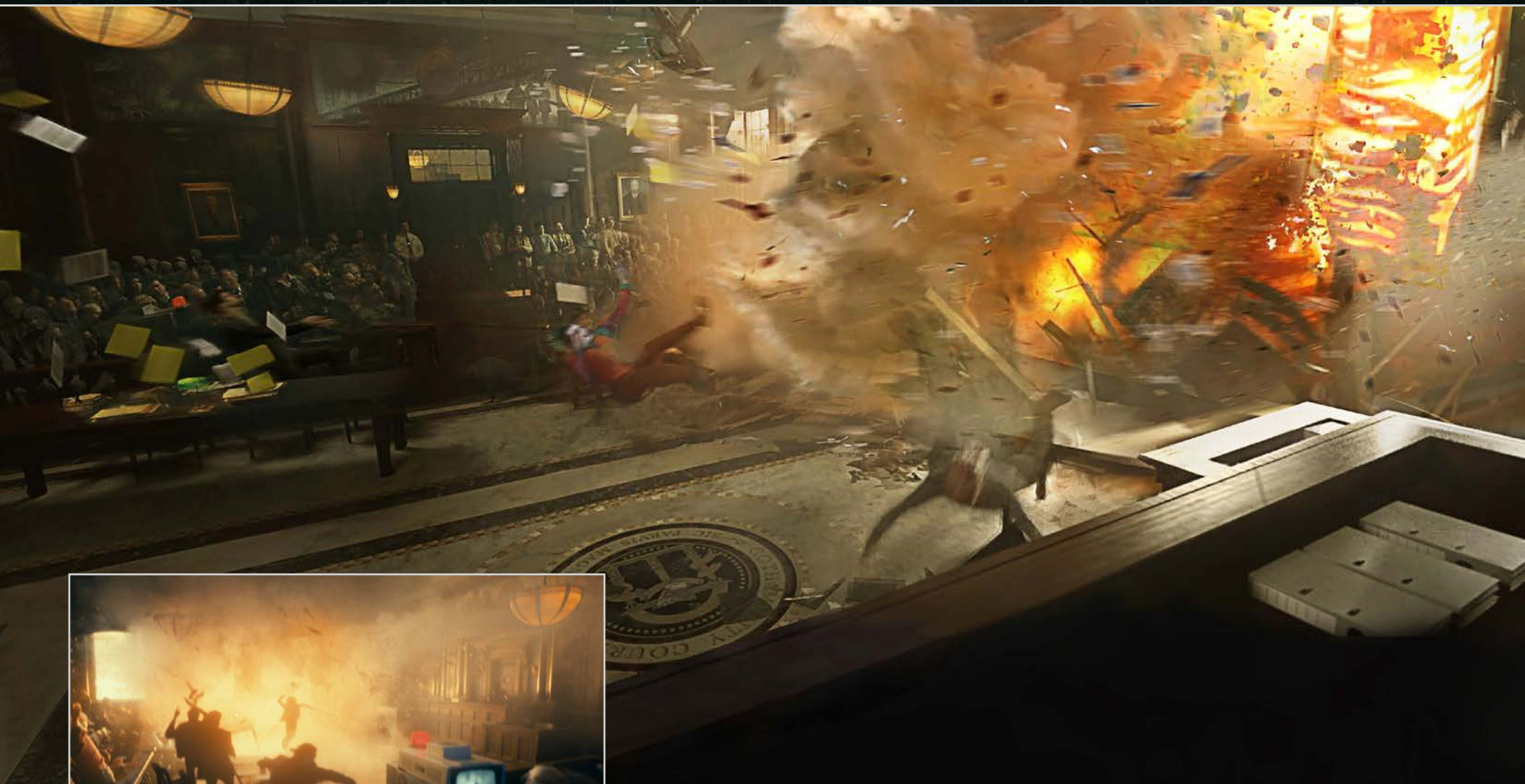


IMAGE FROM THE FILM

CONCEPT ART

COURTROOM EXPLOSION



STILL PHOTO

COURTROOM EXPLOSION



STILL PHOTO

COURTROOM EXPLOSION



STILL PHOTO

COURTROOM EXPLOSION



IMAGE FROM THE FILM

CONCEPT ART



DOWNTOWN

DOWNTOWN



STILL PHOTO & CONCEPT ART

ART DEPARTMENT – LOS ANGELES

PRODUCTION DESIGNER	MARK FRIEDBERG	CONCEPT ARTIST	HUGH SICOTTE
SUPERVISING ART DIRECTOR	DAN WEBSTER	CONCEPT ARTIST	ANNA PODEDWORNA
ART DIRECTOR	LAUREN POLIZZI	CONCEPT ARTIST	MACIEJ KUCIARA
ART DIRECTOR	JARED GERBIG	CONCEPT ARTIST	EMMANUEL SHIU
ART DIRECTOR	ERICA HOHF	VIRTUAL CONCEPT ARTIST	SYDNE PONIC
ART DIRECTOR	GORDON STOTZ	VIRTUAL CONCEPT ARTIST	JULIA KODL
ART DIRECTOR	DAVID MEYER	VIRTUAL CONCEPT ARTIST	PAUL MARTERSTECK
ASST. ART DIRECTOR	WYLIE GRIFFIN	VIRTUAL TECH SUPPORT	YURI BARTOLI
GRAPHIC DESIGNER	ERICA HOHF	ILLUSTRATOR	JAVIER AMEJEIRAS
GRAPHIC DESIGNER	MASON CHESLER	DIGITAL ASSET MANAGER	ROBERT BENAVIDES JR.
SET DESIGNER	NOELLE KING	RESEARCHER	CHEYENNE PEERSON
SET DESIGNER	HOGAN LEE	ASST. TO MARK FRIEDBERG	NINA ATTINELLO
SET DESIGNER	AL HOBBS	ART DEPT COORDINATOR	STEPHANIE FREY
SET DESIGNER	JANE WUU	ART ASSISTANT	FRANK PELLEGRINO
SET DESIGNER	SARAH CONTANT	ART ASSISTANT	GEORGIA KELLY
SET DESIGNER	IAIN McFADYEN	INTERN	GRAHAM COVEN

ART DEPARTMENT – NEW YORK

ART DIRECTOR	JARED GERBIG	ASSISTANT ART DIRECTOR	MICHAEL FAILS
GRAPHIC DESIGNER	ERICA HOHF	ART ASSISTANT	KLARA JOGALLA